

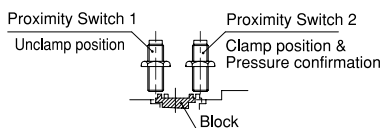
# UBR

## Point

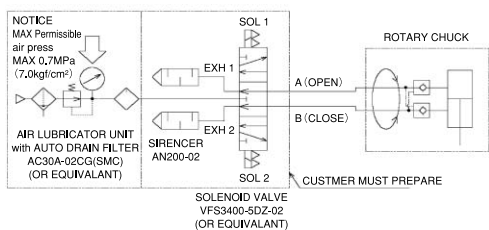
With rapid and gripping stroke  
 Pneumatic cylinder is built in the  
 chuck body


 Open Center  
 Chuck

### Optimum for Jaw position confirmation and pressure confirmation

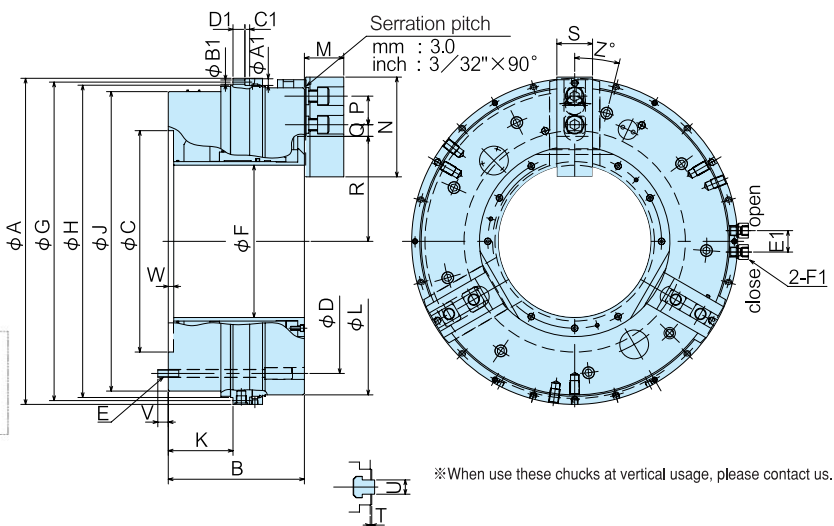


1. Unclamp position confirmation by proximity switch 1.
2. Clamp position confirmation by proximity switch 2.
3. Air leakage confirmation in rotating by proximity switch 2.



**AIR DIAGRAM**

### Dimensional Drawings



### Dimensions

Model	Dimensions																													
	A	B	C (H7)	D	E	F	G	H	J	K	L	M		N	P	Q max.	Q min.	R max.	R min.	S	T	U	V	W	X max.	X min.	Y	Z		
	mm		inch																											
UBR450 (U)	467	232	275	373	9-M12	181	454	—	431	106.5	441	67.3	68.7	165	43	36.7	16.7	140.5	124	62	3.3	25.5	17	6	46.8	42.8	27	20		
UBR560 (U)	605	275	375	485	6-M16	275	590	575	556	124.5	568	70.5	71.9	180	60	32.656	18.37	196.5	171.5	65	3.3	25.5	24	11	57.7	52.8	27	40		
UBR630 (U)	685	286	465	555	9-M16	320	669	656	629	136	645	81.3	82.7	209.5	60	39.3	22.6	220.5	195.5	75	3.3	30	22	11	57.7	52.8	27	14		
UBR710 (U)	790	286	520	620	9-M16	375	770	745	702	136	714	81.3	82.7	209.5	60	43.9	22.5	248	223	75	3.3	30	24	11	57.7	52.8	27	24		

Model	Dimensions					
	A1	B1	C1	D1	E1	F1
UBR450 (U)	11	6.6	6.6	30	45	PT 3/8
UBR560 (U)	14	9	9	20	45	PT 1/2
UBR630 (U)	14	9	10	25	45	PT 1/2
UBR710 (U)	17	11	20	24	45	PT 1/2

### Specifications

Model	Center hole dia mm	Gripping range mm		Jaw Stroke Rapid / Gripping (diameter)	Plunger Stroke mm	Max. Gripping Force at air pressure 0.2MPa (6.1kgf/cm <sup>2</sup> ) kN (kgf)	Max. Speed min <sup>-1</sup> (r.p.m)	Weight Kg	Moment of inertia kg·m <sup>2</sup>	Max pressure Mpa (kgf/cm <sup>2</sup> )	Air cosumption per 10mm at air pressure 0.6Mpa (6.1kgf/cm <sup>2</sup> )·l
		Max.	Min.								
UBR450 (U)	181	441	127	26 / 14	53	100 (10197)	1300	210	5.48	0.6 (6.1)	4.83
UBR560 (U)	275	568	235	33 / 17	53.5	120 (12230)	1100	380	17.5	0.6 (6.1)	7.17
UBR630 (U)	320	645	235	33 / 17	53.5	147 (15000)	1000	510	29.6	0.6 (6.1)	9.27
UBR710 (U)	375	714	290	33 / 17	53.5	162 (16519)	900	590	42.6	0.6 (6.1)	11.1

1. Maximum speed is shown with each value under air pressure of 6kg/cm<sup>2</sup>, using standard soft jaw and fixed air supply ring. If the supply ring is not fixed, each value in ( ) is applied.
2. Gripping force of a jaw is one third of max. gripping force.
3. Standard accessories : Soft jaw, air pressure gauge, tools of a set.