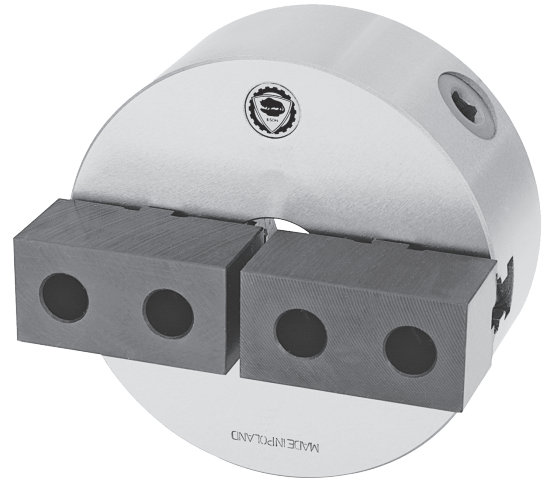
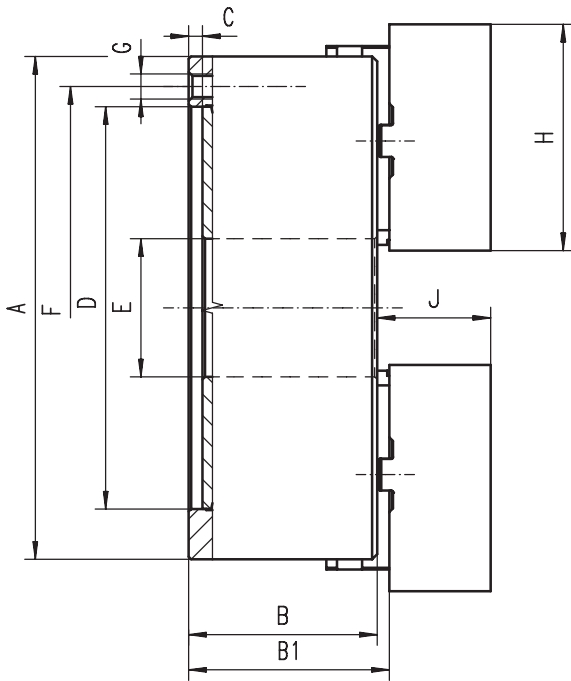


**Type 3105**

**2 JAWS, CAST IRON BODY (DIN 6350)**



**Features:**

- 2 jaw, self-centering, scroll chuck with manual gripping, and a high quality cast iron body
- Chucks are equipped with soft, steel top jaws, which can be individually shaped by the user and clamp irregularly-shaped workpieces
- Hard two-piece jaws
- Smart design, allowing inner parts to be replaced quickly
- Mounted on the machine-tool spindle from the back of the chuck, using the adapter plate

**Application:**




- This chuck is designed for all types of workshop machining operations on conventional lathes

**Options:**

- Chuck size: can be greater than 400 mm, but not exceeding 1000 mm
- Chuck design: our engineers can work with you to implement any product design changes you may require

Chuck size A	160	200	250	315	400
B	64,5	75	85	94	105
B1	69,3	79,8	88,8	99,1	113,8
C	4	4	5	5	5
D H7	125	160	200	260	330
E	42	55	76	103	136
F	140	176	224	286	362
G	6xM10	6xM10	6xM12	6xM16	6xM16
H	70	85	105	125	145
J	32	29	34	43	55
Approx. weight [kg]	10	17,5	29	50	85

Other engineering data - see pages 53-54

Type 3105	Standard accessories		1 set of soft top jaws		1 set of hard master jaws		1 wrench
-----------	----------------------	---	------------------------	---	---------------------------	---	----------

Spare parts - see pages 55-57