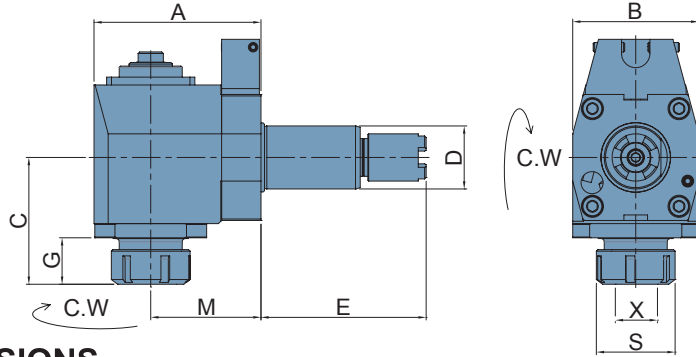




# Radial Drilling And Milling Heads



TYPE HAAS



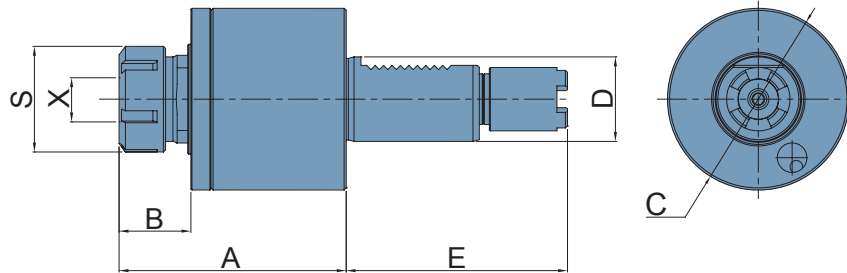
- 1.External coolant supply
- 2.To be used for collet DIN 6499
- 3.Collet is not included

## DIMENSIONS

ORDER NO.	D	X capacity	S	Maximum R.P.M.	A	B	C	G	M	E	MODELS	CODE NO.
VDI-40-FL40-32-104	40	2-20 ER32	50	4000	106	80	85	34	70	104.85	SL-20/TL-15	5006-600
117.55										SL-30/TL-25 SL-40	5006-601	
130.35										SL-40	5006-602	



# Axial Milling And Drilling Heads



✂ORDER MADE, NOT REFUNDABLE.

- 1.External coolant supply
- 2.To be used for collet DIN 6499
- 3.Collet is not included

## DIMENSIONS

ORDER NO.	D	X capacity	S	Maximum R.P.M.	A	B	C	E	MODELS	CODE NO.
VDI-40-DA40-32104	40	2-20 ER32	50	6000	109	34	86	104.85	SL-20/TL-15	5006-610
117.55								SL-30/TL-25	5006-611	
130.25								SL-40	5006-612	

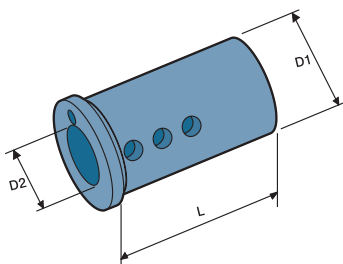


# Reducing Sleeves

RS-W, RS TYPE

## RS-W

- External Coolant Supply
- For Boring Bar Holder

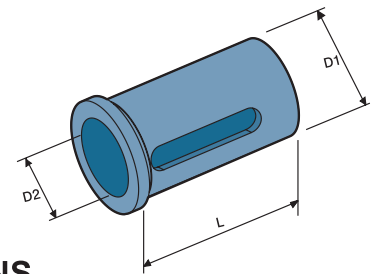


## DIMENSIONS

D1	L	ORDER NO. D2	CODE NO.
20	45	E20-6	5006-369
		E20-8	5006-370
		E20-10	5006-371
25	55	E25-6	5006-372
		E25-8	5006-373
		E25-10	5006-374
		E25-12	5006-375
32	60	E32-6	5006-376
		E32-8	5006-377
		E32-10	5006-378
		E32-12	5006-379
40	75	E40-6	5006-381
		E40-8	5006-382
		E40-10	5006-383
		E40-12	5006-384
50	85	E50-8	5006-388
		E50-10	5006-389
		E50-12	5006-390
		E50-16	5006-391
		E50-20	5006-392
		E50-25	5006-393

## RS

- For Boring Bar Holder



## DIMENSIONS

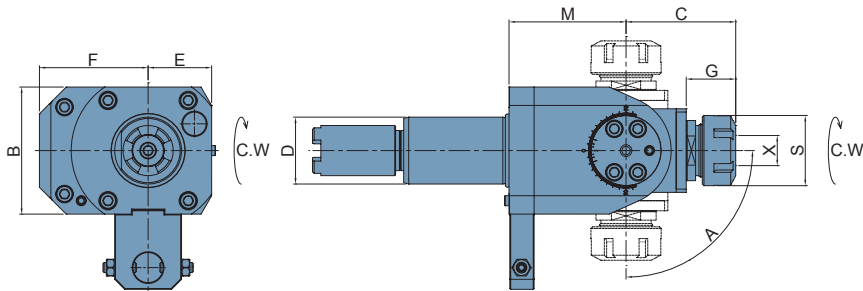
D1	L	ORDER NO. D2	CODE NO.
20	50	E20-12-K	5006-399
		E20-16-K	5006-400
25	50	E25-16-K	5006-401A
		E25-20-K	5006-401
32	60	E32-16-K	5006-402A
		E32-20-K	5006-402B
		E32-25-K	5006-402
40	75	E40-16-K	5006-403A
		E40-20-K	5006-403B
		E40-25-K	5006-403C
		E40-32-K	5006-403
50	85	E50-32-K	5006-404A
		E50-40-K	5006-404



# Angular Heads



## TYPE HAAS



- 1.External coolant supply
- 2.To be used for collet DIN 6499
- 3.Collet is not included

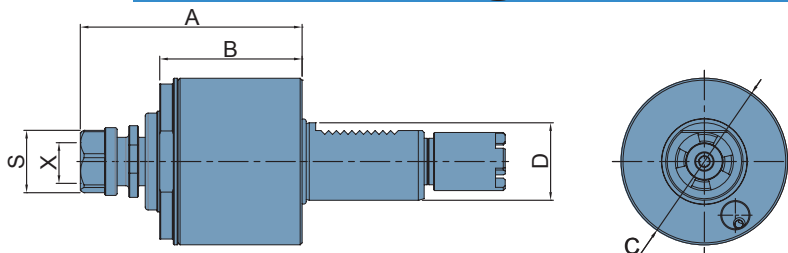
### DIMENSIONS

ORDER NO.	D DIN 69880	X capacity	Maximum R.P.M.	S	A	B	C	E	F	G	M	CODE NO.
VDI-40-DA40-25B-117	40	2-16 ER25	4000	42	±90°	76	65.5	38	65	29.5	70	5006-621
VDI-40-DA40-32B-117		2-20 ER32		50			88.5			52.5		5006-622



# Axial Drilling And Milling Heads

✕ORDER MADE, NOT REFUNDABLE.



- 1.External coolant and intermediate rings supply
- 2.To be used for cutter arbor according to DIN 6358

### DIMENSIONS

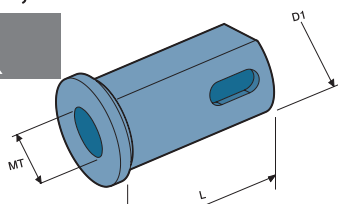
ORDER NO.	D DIN 69880	X capacity	Maximum R.P.M.	S	i	A	B	C	CODE NO.
VDI-40-TDA40-20-104.85	40	1-13 ER20	3000	35	1:1	114.5	74.5	86	5006-631



# Reducing Sleeves

RS-W, RS TYPE

## RS-MT

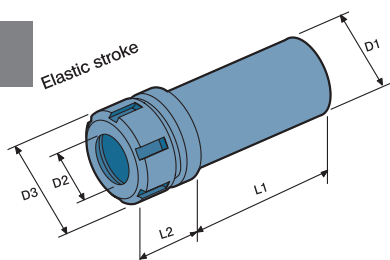


- Tool holders with morse taper according to DIN 228

### DIMENSIONS

D1	L	MT				ORDER NO.	CODE NO.
		1	2	3	4		
32	60	E32-MT1	E32-MT2	E32-MT3		ORDER NO.	
		5006-410	5006-411	5006-412		CODE NO.	
40	70	E40-MT1	E40-MT2	E40-MT3	E40-MT4	ORDER NO.	
		5006-414	5006-415	5006-416	5006-417	CODE NO.	
50	85	E50-MT1	E50-MT2	E50-MT3	E50-MT4	ORDER NO.	
		5006-418	5006-419	5006-420	5006-421	CODE NO.	

## TE



- Auto taper with cylindric shaft
- To be used for collet DIN 6499

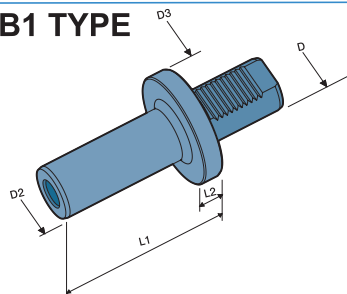
### DIMENSIONS

ORDER NO.	D1	D2	D3	L1	L2	CODE NO.	
TE25-ER16	25	1-10	M3-M12	ER16 32	70.5	30	5006-430
TE32-ER20	32	2-13	M3-M16	ER20 35	65	40	5006-431
TE40-ER25	40	2-16	M4-M20	ER25 42	75	43	5006-432
TE50-ER32	50	3-20	M6-M24	ER32 50	85	48	5006-433



# Test Mandrel

TB1 TYPE



### DIMENSIONS

DIN 69880

ORDER NO.	D DIN 69880	D2	D3	L1	L2	CODE NO.
TB1-30	30	30	68	115	15	5006-434
TB1-40	40	40	83	115	15	5006-435
TB1-50	50	50	98	115	15	5006-436



# Radial Milling And Drilling Head

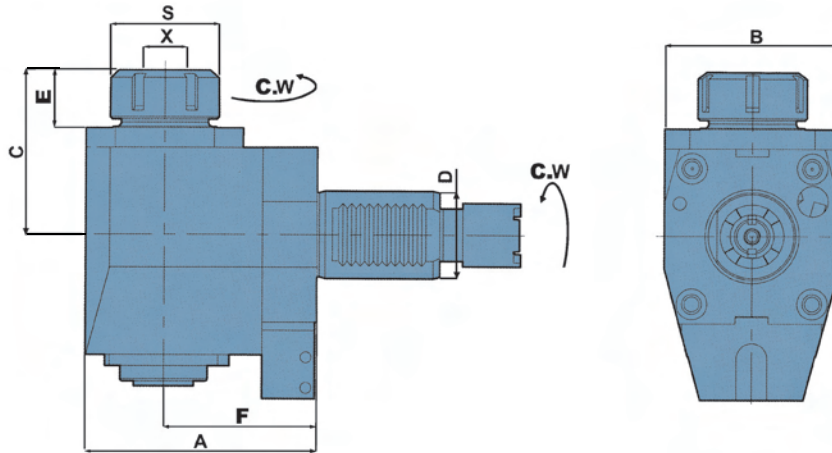


OKUMA TYPE

90°

**NEW**

- External Coolant Supply
- Collet is not included
- To be used for collet DIN 6499



## DIMENSIONS

ORDER NO.	OKUMA TYPE	D	X capacity	S	Maximum R.P.M.	A	B	C	E	F	CODE NO.
OKM-FL40-32-70	L300M	40	2-20 ER32	50	5000	106	80	75	26	70	5006-650

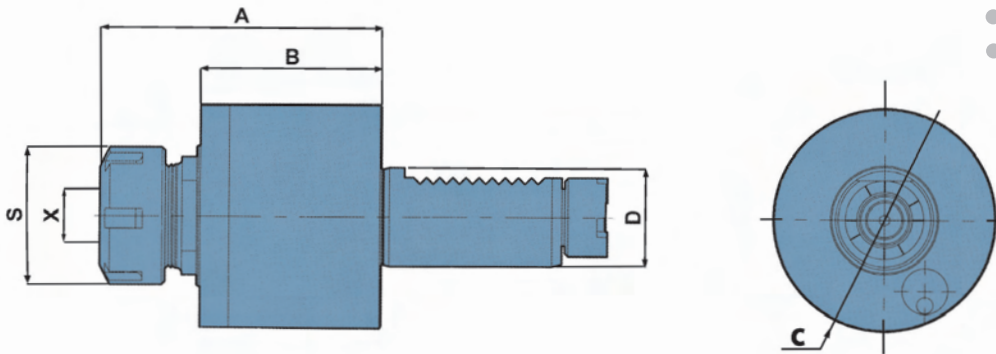


# Axial Milling And Drilling Head

0°

**NEW**

- External Coolant Supply
- Collet is not included
- To be used for collet DIN 6499



## DIMENSIONS

ORDER NO.	OKUMA TYPE	D	X capacity	S	Maximum R.P.M.	A	B	C	CODE NO.
OKM-DA30-ER20	L200M	30	1-13 ER20	35	6000	84.5	57	68	5006-656
OKM-DA30-ER25	L200M	30	1-16 ER25	42	6000	86	55	68	5006-657
OKM-DA40-ER32	L300M	40	2-20 ER32	50	6000	106	74	86	5006-658



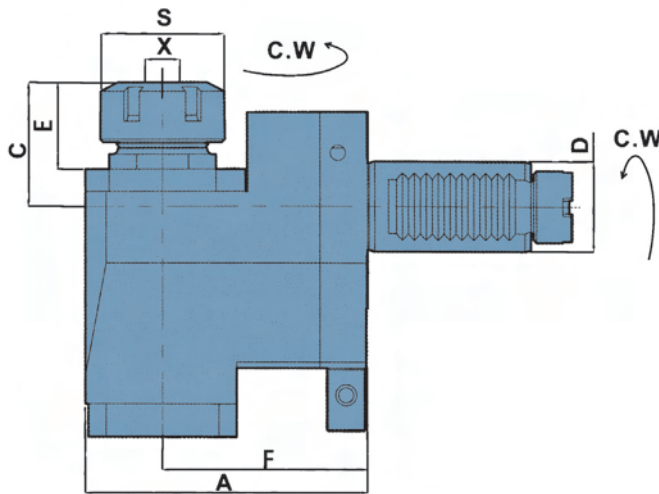
# Radial Milling And Drilling Head



OKUMA TYPE

90°

**NEW**



- External Coolant Supply
- Collet is not included
- To be used for collet DIN 6499

## DIMENSIONS

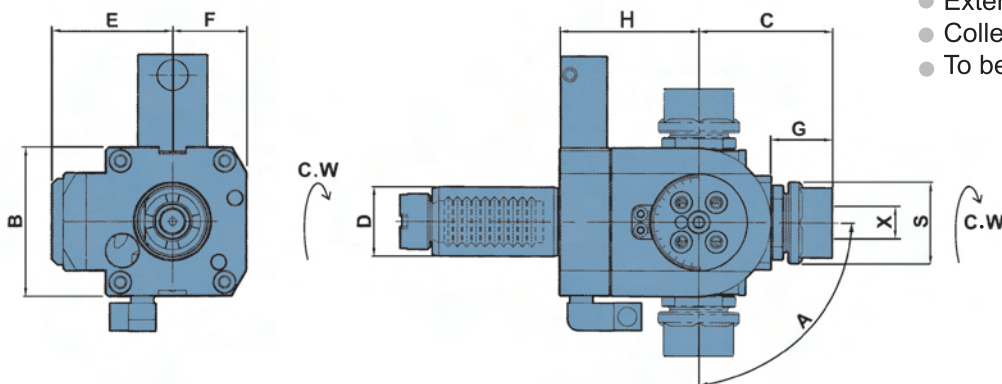
ORDER NO.	OKUMA TYPE	D	X capacity	S	Maximum R.P.M.	A	B	C	E	F	CODE NO.
OKM-BL30-20-69-N	L200M	30	1-13 ER20	35	5000	95	64	43	30	69	5006-665
OKM-BL30-25-69-N	L200M	30	1-16 ER25	42	5000	95	64	42.5	30	69	5006-666
OKM-BL40-32-90	L300M	40	2-20 ER32	50	5000	124	80	42.5	29	90	5006-667

VDI



# Angular Heads

**NEW**



- External Coolant Supply
- Collet is not included
- To be used for collet DIN 6499

## DIMENSIONS

ORDER NO.	OKUMA TYPE	D	X capacity	S	Maximum R.P.M.	A	B	C	E	F	G	H	CODE NO.
OKM-DA30-20B	L200M	30	1-13 ER20	35	4000	±90°	64	59	54	32	27	67	5006-671
OKM-DA40-25B	L300M	40	1-16 ER25	42	4000	±90°	76	65	65	38	29	70	5006-672



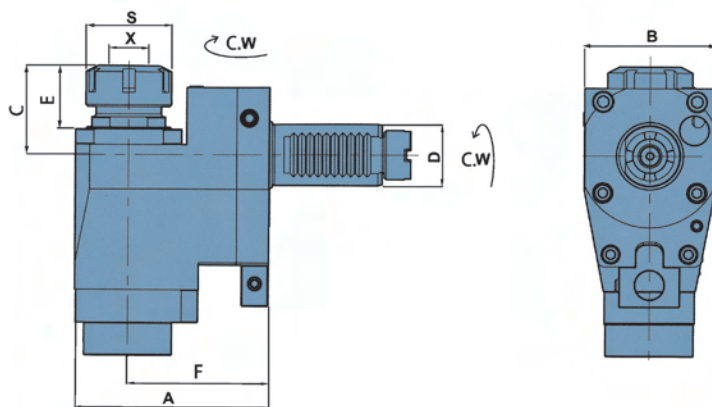
# Radial Milling And Drilling Head



OKUMA TYPE

90°

**NEW**



- Internal coolant supply
- Collet is not included
- To be used for collet DIN 6499

## DIMENSIONS

ORDER NO.	OKUMA TYPE	D	X capacity	S	Maximum R.P.M.	A	B	C	E	F	CODE NO.
OKM-CW-BL30-25-69	L200M	30	1-16 ER25	42	5000	95	64	43.5	31	69	5006-675



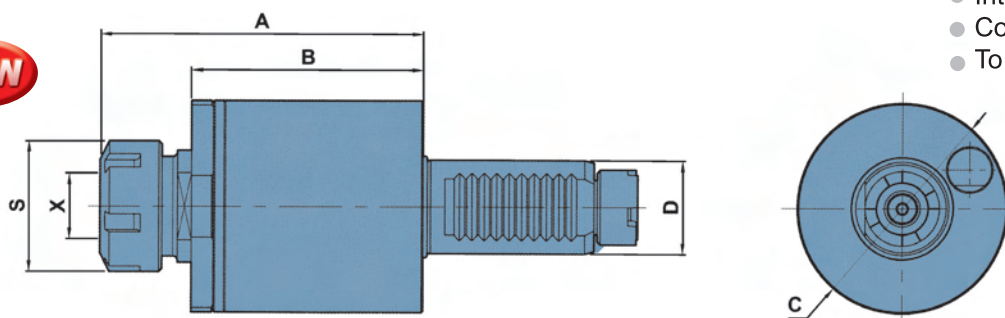
# Axial Milling And Drilling Head

0°

- Internal coolant supply
- Collet is not included
- To be used for collet DIN 6499



**NEW**



## DIMENSIONS

ORDER NO.	OKUMA TYPE	D	X capacity	S	Maximum R.P.M.	A	B	C	CODE NO.
OKM-CW-DA30-ER25	L200M	30	1-16 ER25	42	6000	104	74.5	68	5006-678

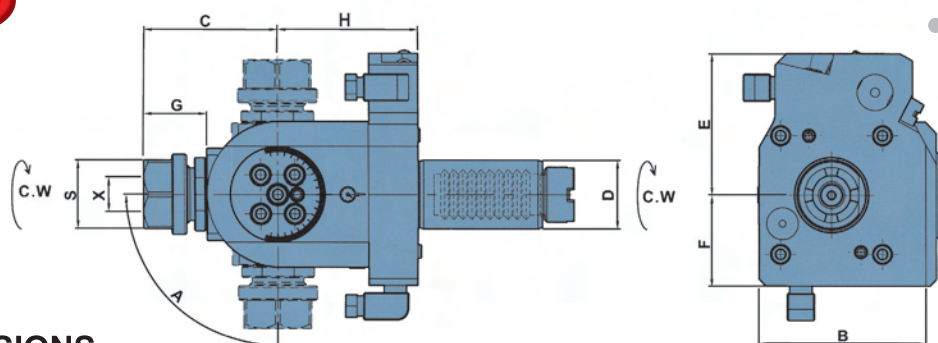


# Angular Heads

OKUMA TYPE

- External Coolant Supply
- Collet is not included
- To be used for collet DIN 6499

**NEW**



## DIMENSIONS

ORDER NO.	OKUMA TYPE	D	X capacity	S	Maximum R.P.M.	A	B	C	G	E	F	H	CODE NO.
OKM-LT-DA30-20B	LT200-MY	30	1-13 ER20	35	4000	±90°	74	59	27	62	40	67	5006-682

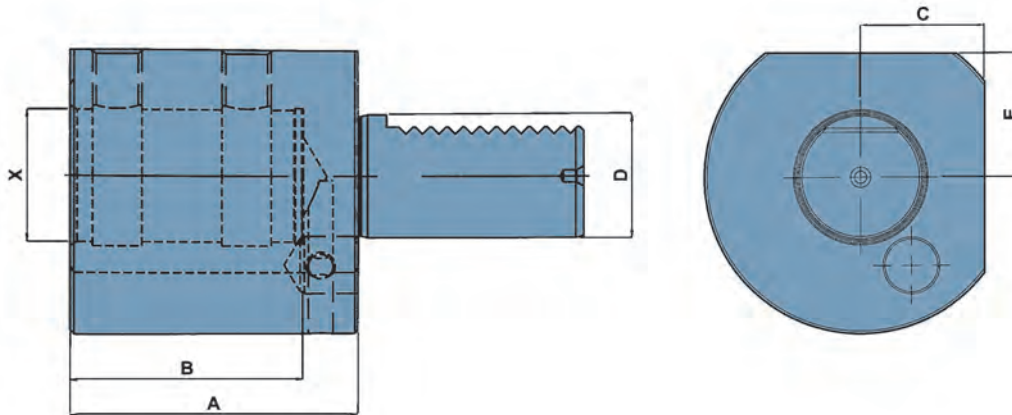


# Boring Bar Holder



OKUMA TYPE

- Internal Coolant supply



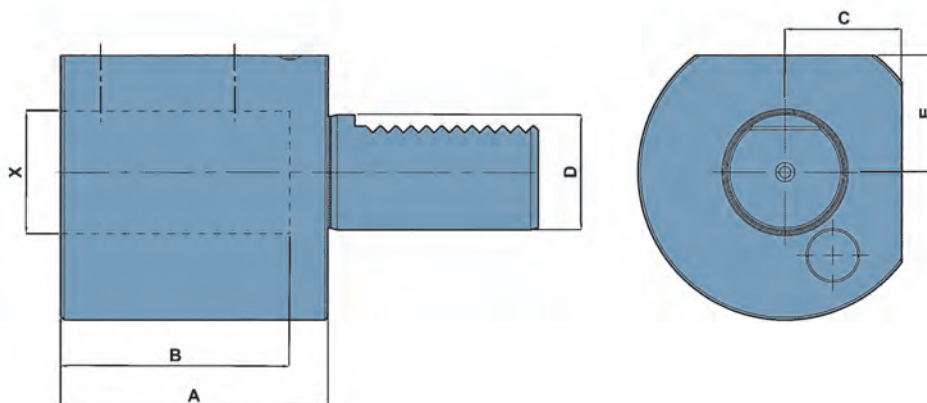
## DIMENSIONS

ORDER NO.	OKUMA TYPE	D	X	A	B	C	E	CODE NO.
OKM-4162-2707-10	L200M	30	32(MM)	70	56.5	30.5	30.5	5006-686
OKM-4163-2785-10	L300M	40	1.5"(INCH)	75	65	34.5	34.5	5006-687
OKM-4163-2723-10		40	40(MM)	75	60	34.5	34.5	5006-688



# Boring Bar Holder

- External Coolant Supply



## DIMENSIONS

ORDER NO.	OKUMA TYPE	D	X	A	B	C	E	CODE NO.
OKM-4167-2610-10	L200M	30	1.25"(INCH)	70	60	30.5	30.5	5006-692
OKM-4167-2604-10		30	32(MM)	70	60	30.5	30.5	5006-693
OKM-4163-2769-11	L300M	40	1.5"(INCH)	75	65	34.5	34.5	5006-694
OKM-4163-2704-12		40	40(MM)	75	60	34.5	34.5	5006-695

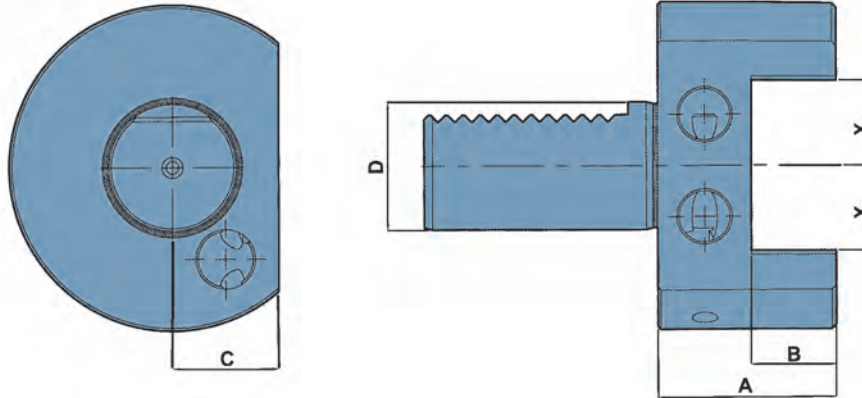


# Turning Holder



OKUMA TYPE

**NEW**



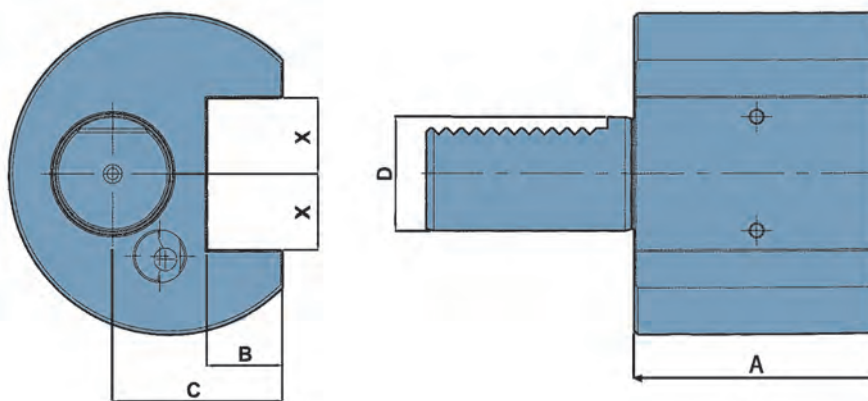
## DIMENSIONS

ORDER NO.	OKUMA TYPE	D	X	A	B	C	CODE NO.
OKM-A4167-2607-10	L200M	30	0.75" (INCH)	42	0.75" (INCH)	25	5006-700
OKM-A4167-2601-10		30	20 (MM)	42	20 (MM)	25	5006-701
OKM-B4167-2608-10	L200M	30	0.75" (INCH)	42	0.75" (INCH)	55	5006-702
OKM-B4167-2602-10		30	20 (MM)	42	20 (MM)	55	5006-703
OKM-A4163-2766-11	L300M	40	1" (INCH)	47	1" (INCH)	30	5006-704
OKM-A4163-2701-11		40	25 (MM)	47	25 (MM)	30	5006-705
OKM-B4163-2676-11	L300M	40	1" (INCH)	47	1" (INCH)	65	5006-706
OKM-B4163-2702-11		40	25 (MM)	47	25 (MM)	65	5006-707



# Facing Holder

**NEW**



## DIMENSIONS

ORDER NO.	OKUMA TYPE	D	X	A	B	C	CODE NO.
OKM-C4167-2609-10	L200M	30	0.75" (INCH)	65	0.75" (INCH)	45	5006-711
OKM-C4167-2603-10		30	20 (MM)	65	20 (MM)	45	5006-712
OKM-C4163-2768-11	L300M	40	1" (INCH)	72	1" (INCH)	50	5006-713
OKM-C4163-2703-11		40	25 (MM)	72	25 (MM)	50	5006-714



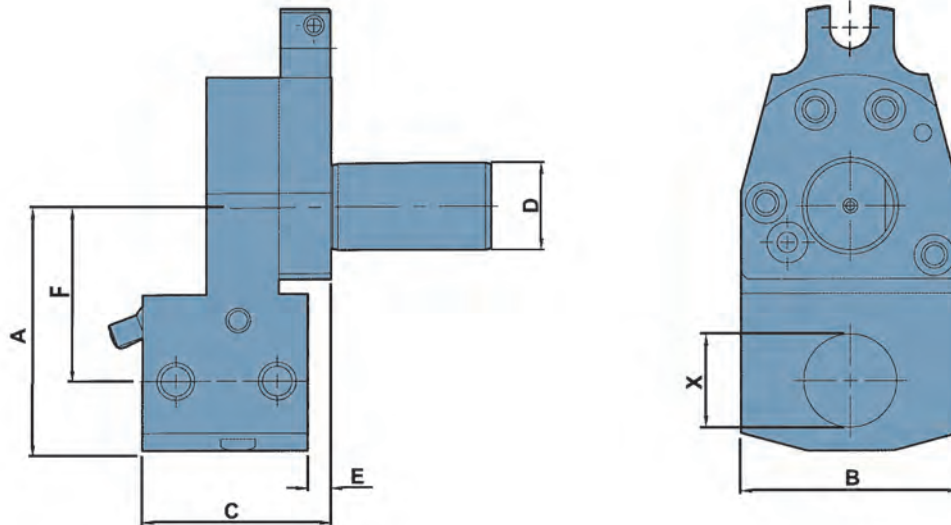
# Boring Bar Holder



OKUMA TYPE

● External Coolant Supply

**NEW**



## DIMENSIONS

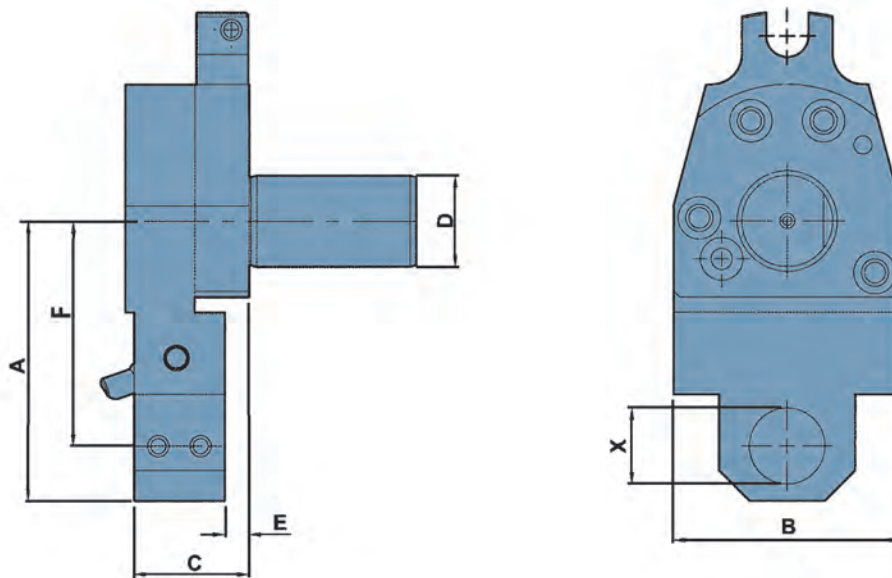
ORDER NO.	OKUMA TYPE	D	X	A	B	C	E	F	CODE NO.
OKM-4167-2611-10	L200M	30	32 (MM)	84	75	65	8	60	5006-720
OKM-4176-2566-10	L300M	40	1.5" (INCH)	135	94	65	-10	110	5006-721
OKM-4163-2707-10		40	40 (MM)	135	94	65	-10	110	5006-722



# Boring Bar Holder

● External Coolant Supply

**NEW**



## DIMENSIONS

ORDER NO.	OKUMA TYPE	D	X	A	B	C	E	F	CODE NO.
OKM-4167-2612-10	L200M	30	25	92	75	38	8	74	5006-726



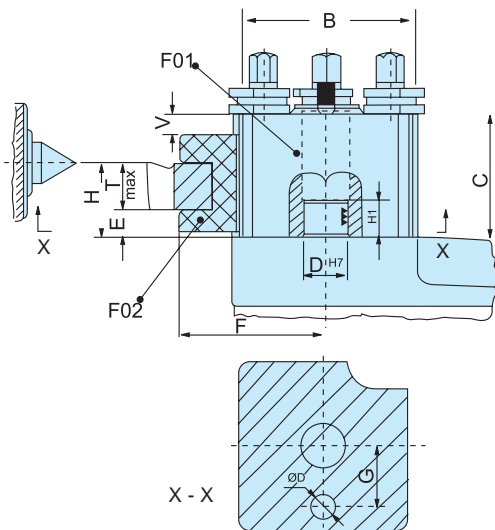


**NEW**



### Italian Style

- The main block is assembled with cast-hardened steel, secured rigidly by the latch carriage machine steel bolt.
- The main block has 4 slide openings for inserting the proper tool-holder; these can be securely fastened by a simple and safe eccentric device, which also adjusts the height for each tool holder.
- The tool shank is securely held by 4 hardened screws. The simplicity and fast tool changing increase the production of lathe turning.
- No chatter or vibrations.
- This style is interchangeable with Rapidue and STM.



### Complete set includes:

- 1 pieces Tool post
- 3 pieces of turning holders
- 1 piece of Round shanks
- Standard spanners

### MAIN BODY DIMENSIONS

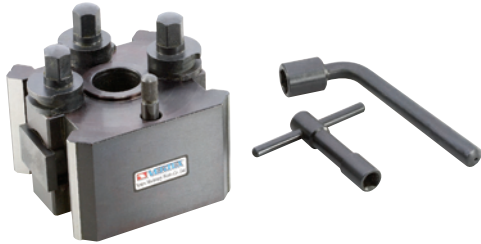
ORDER NO.	Lathe swing	B	D <sup>H7</sup>	H		C	E	T <sub>max</sub>	F	V <sub>max</sub>	Ø <sub>max</sub>	Morse NO.	ØD	G	H1	Image	
				Min	Max												
VTP-M	180-250	57.7	18	24	34	45	8	16	56	10	14	1	7	27	18	70	
VTP-AR-AP	250-300	64.5	18	25	41	56	9	16	63	16	16	1	8	30	16	80	
VTP-A	250-350	82.0	24	32	42	60	12	20	75	10	18	2	10	35	20	100	
VTP-BR-BP	300-380	91.6	28	38	53	75	13	25	90	17	20	3	10	40	20	115	
VTP-B	350-500	100.0	30	47	65	85	15	32	100	15	24	3	12	48.2	25	127	
VTP-C	500-650	115.3	38	51	72	94	19	32	108	24	26	4	14	58.2	26	145	

### SET TYPE

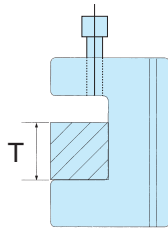
ORDER NO.	5-PIECE SETS EACH SET INCLUDES	G.W. kgs	CODE NO.
VTP-M	1 x F01-M, 3 x F02-M AND 1 x F03-M	3.1	5006-890
VTP-AR-AP	1 x F01-AR-AP, 3 x F02-AR-AP AND 1 x F03-AR-AP	4.5	5006-891
VTP-A	1 x F01-A, 3 x F02-A AND 1 x F03-A	9.3	5006-892
VTP-BR-BP	1 x F01-BR-BP, 3 x F02-BR-BP AND 1 x F03-BR-BP	13.2	5006-893
VTP-B	1 x F01-B, 3 x F02-B AND 1 x F03-B	17.5	5006-894
VTP-C	1 x F01-C, 3 x F02-C AND 1 x F03-C	23.0	5006-895



## Tool Post



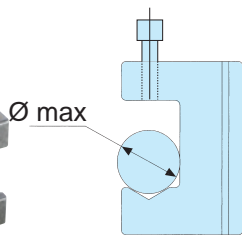
ORDER NO.	Centre Height (mm)	Lathe Swing (mm)	CODE NO.
VTP-F01-M	120	240	5006-900
VTP-F01-AR-AP	140	280	5006-901
VTP-F01-A	170	340	5006-902
VTP-F01-BR-BP	200	400	5006-903
VTP-F01-B	230	460	5006-904
VTP-F01-C	280	560	5006-905



● Turning Holders

## Turning Holder

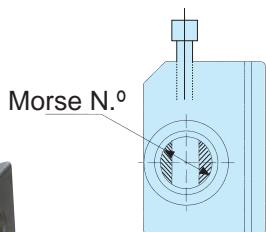
ORDER NO.	Centre Height (mm)	Max. Square & Rectangular Tool (mm)	CODE NO.
VTP-F02-M	120	16	5006-906
VTP-F02-AR-AP	140	16	5006-907
VTP-F02-A	170	20	5006-908
VTP-F02-BR-BP	200	25	5006-909
VTP-F02-B	230	32	5006-910
VTP-F02-C	280	32	5006-911



● Round Shanks

## Round Shanks

ORDER NO.	Centre Height (mm)	Max. Holding Dia (mm)	CODE NO.
VTP-F03-M	120	14	5006-912
VTP-F03-AR-AP	140	16	5006-913
VTP-F03-A	170	18	5006-914
VTP-F03-BR-BP	200	20	5006-915
VTP-F03-B	230	24	5006-916
VTP-F03-C	280	26	5006-917



● Morse Holder

## Morse Holder

ORDER NO.	Centre Height (mm)	Morse Taper Hole	CODE NO.
VTP-F04-M	120	MT No. 1	5006-918
VTP-F04-AR-AP	140	MT No. 2	5006-919
VTP-F04-A	170	MT No. 2	5006-920
VTP-F04-BR-BP	200	MT No. 3	5006-921
VTP-F04-B	230	MT No. 3	5006-922
VTP-F04-C	280	MT No. 4	5006-923

TOOL POST