



# Tool Post Grinder ON Lathe

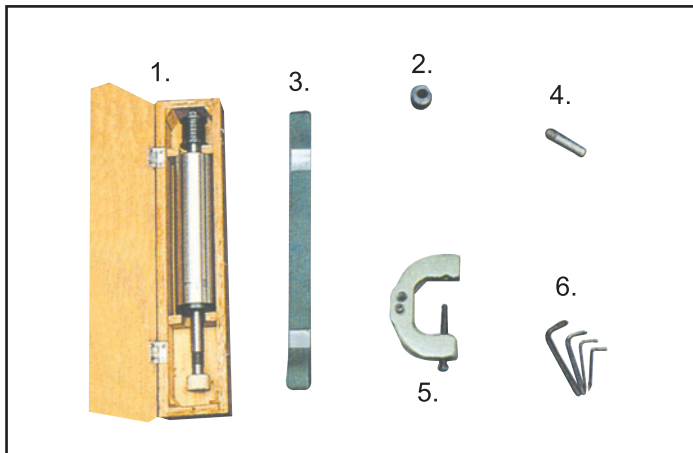
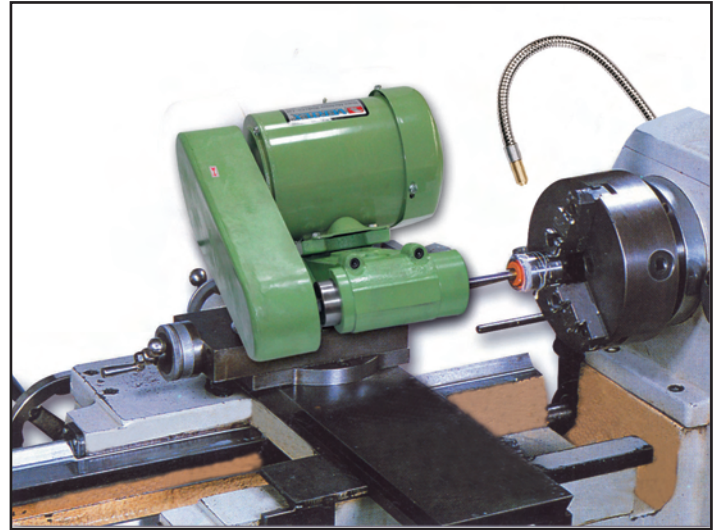


W/O CE Light Duty



ORDER NO. VGR-150

## For Internal Grinding



## Standard Accessories

1. Internal Spindle .....	1
2. Pulley for Internal Grinding .....	2
3. Flat Belt .....	1
4. Diamond tool .....	1
5. Holder for Diamond Tool .....	1
6. Key Folds (8, 5, 3, 2mm) .....	4

- ※ ECONOMICAL TYPE FOR LIGHT DUTY ONLY
- ※ 220V/3 PH, 380V/3PH
- ※ COLOR & SHAPE MAY VARY.

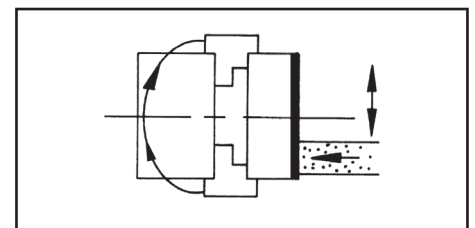
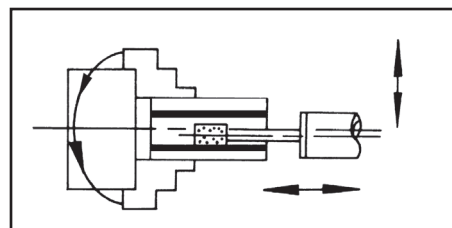
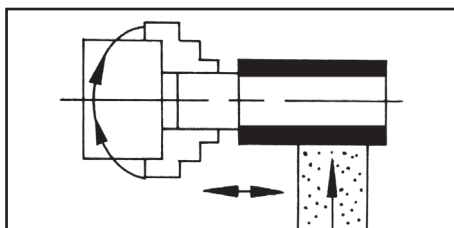
※ Guaranteed for 3 months

## Characteristic Features

- Both the main shafts have been specially designed, and the world-wide precision bearing is used to fit the main shafts which are made of alloy steel heat-treated for high wear resistance, precision, as well as maintaining to the lowest temperature for durability and stability.
- The motor base and the spindle bushing are adjustable.
- The motor is well designed with a special and nice appearance, The R.P.M. of this motor varied depending on the size of the workpiece.
- This grinder is capable of grinding the work piece to a minimum of 3 mm in outer diameter and from 2mm up in inner diameter (bore) with the accuracy within 0.003mm and a well finished surface. (supplied with special attachments).
- The spindle bushing is made of cast iron, and supported by three surfaces. Therefore, it is durable and elastic.
- Materials such as steel, iron, copper (brass), aluminum, cast iron, plastics, procelain, marble, regardless of being heat treated or not, can be ground on this machine which functions lie a cylindrical grinder. So it may lower the cost of the production.

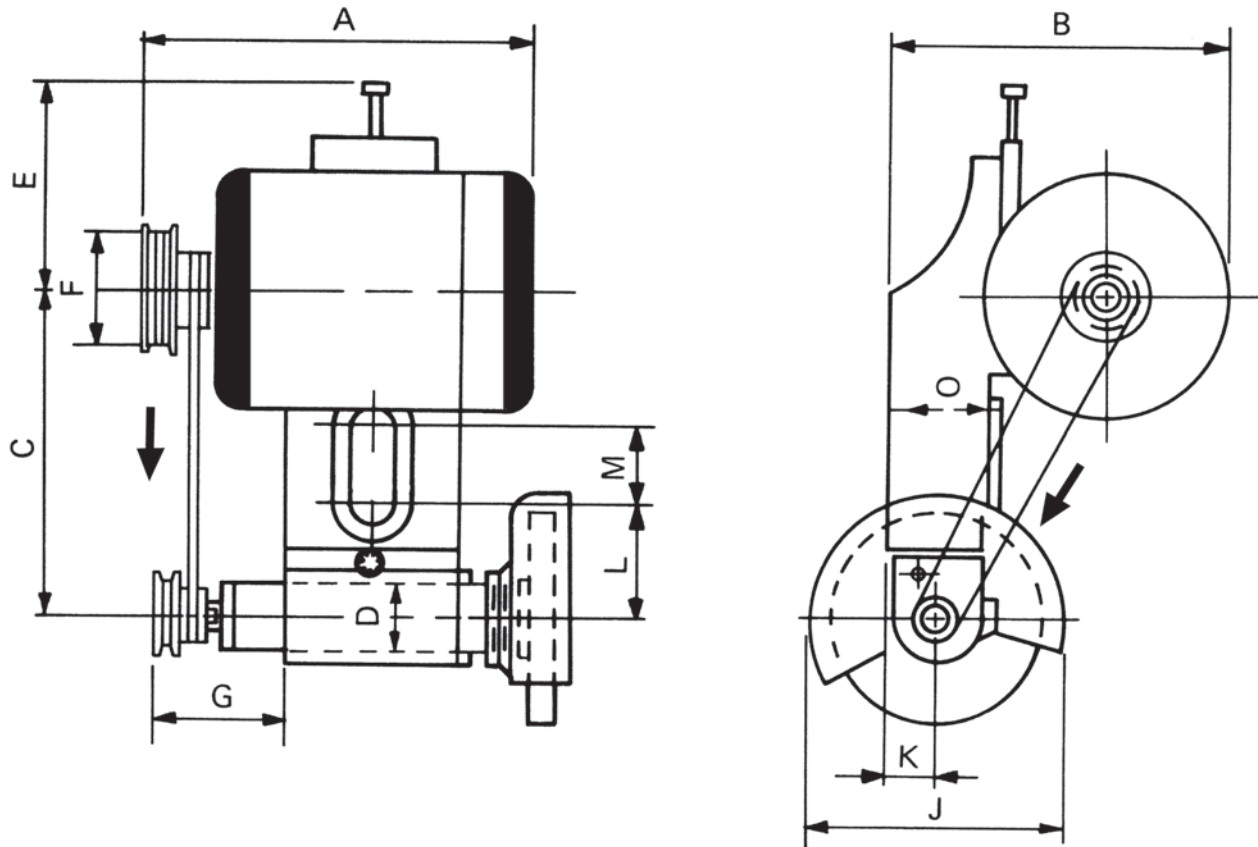
We assure you of high quality products.

## ※ Types of Grinding For Work Pieces





# Tool Post Grinder ON Lathe



- ⊗ CLOCR MAY VARY
- ⊗ NOT FOR HIGH PRECISION GRINDING

ORDER NO.	Main Dimension. (mm)												Net Weight (kgs)	Packing Size (mm)
	A	B	C	D	E	F	G	J	K	L	M	O		
VGR-165	280	275	260-310	50	160	110	65	230	40-65	105	40	85	48	520x430x350
VGR-150	280	275	250-300	48	160	110	65	150	40-65	105	40	85	38	520x430x350
VGR-125	270	230	230-280	48	-	110	65	150	34-58	90	15	75	35	520x430x350
VGR-100	235	200	170	40	-	110	50	150	28	45	10	64	24	450x320x340

ORDER NO.	HP	External Spindle		Internal Spindle				Grinder on Lathe (Length of Bed of Lathe) Ft.	For Swing m/m	CODE NO.		
		Size of Wheel dia x width-hole	(R.P.M.) Non-load Speed	Diameter to be ground	Size of Wheel dia x width x hole	(R.P.M.) Non-load Speed	Grinding Depth (mm)					
VGR-165	1	5"x5/8"x5/8"	3000 3700	2490 3070	25-50	1"x3/8"x1/4"	20000 13500	16800 11500	70	8-10	650-1600	5004-003
VGR-150	1	5"x5/8"x5/8"	4500 6000	3750 5000	19-40	1"x3/8"x1/4"	20000 13500	16800 11500	70	6-8	550-900	5004-004
VGR-125	1/2	5"x5/8"x5/8"	4500 6000	3750 5000	19-40	1"x3/8"x1/4"	20000 13500	16800 11500	70	4-6	430-850	5004-005
VGR-100	1/4	5"x5/8"x5/8"	4500 6000	3750 5000	19-40	1"x3/8"x1/4"	20000 13500	16800 11500	50	under 4	320-400	5004-006



# VDI Tool Holders

Coupling Type System



DIN69880

A DIN 1809 (For DUPLOMATIC)



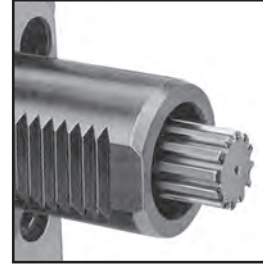
Coupling to DIN 1809

B DIN 5480 (For SAUTER/DUPLOMATIC)



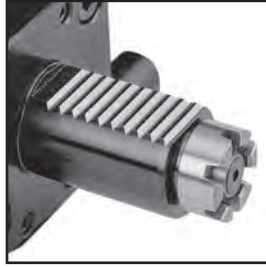
Coupling to DIN 5480

C DIN 5482 (For SAUTER/DUPLOMATIC)



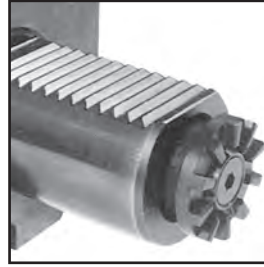
Coupling to DIN 5482

D MT (For BARUFFALDI)



Spur Coupling

E IT (For DUPLOMATIC)



Spur Coupling

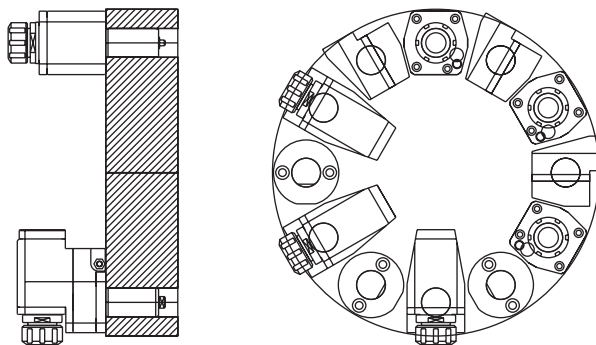


# VDI Tool Holders

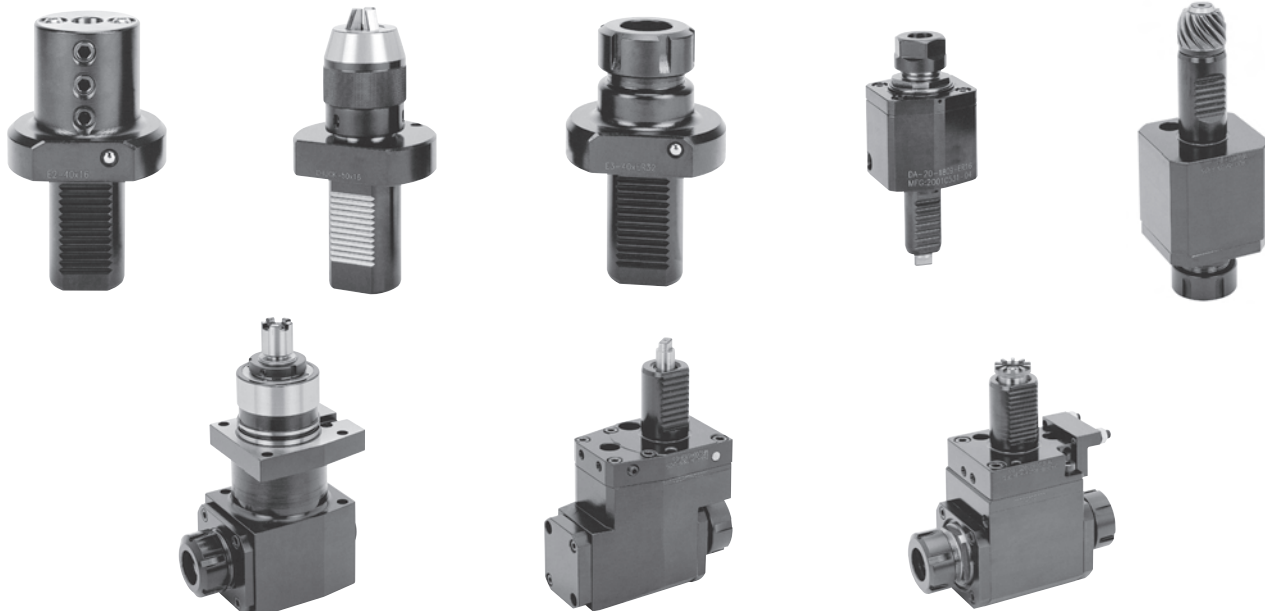
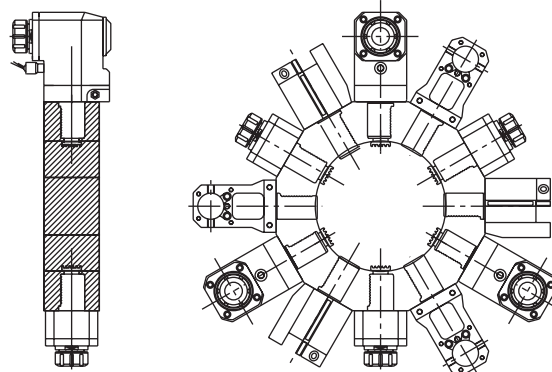
Tool Holders Direction System

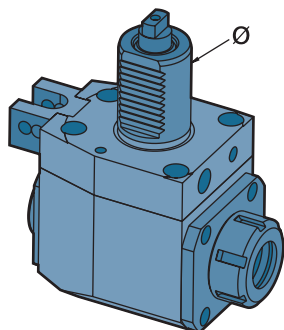
DIN69880

A: Axial Direction



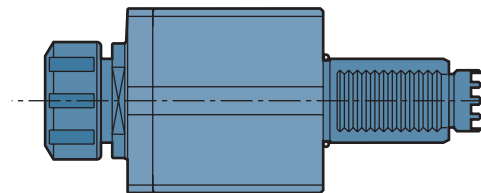
B: Radial Direction (Star Turret)





**DA**

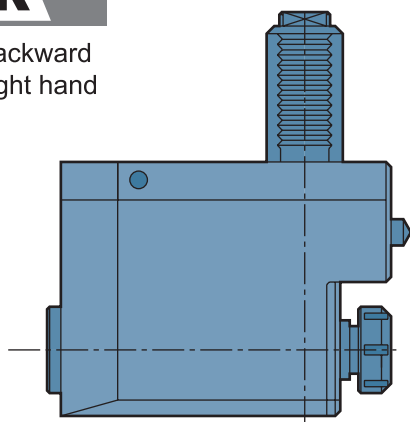
Stright Direct Drive



	VDI 20	VDI 30	VDI 40	VDI 50
SHAFT DIA.	20	30	40	50

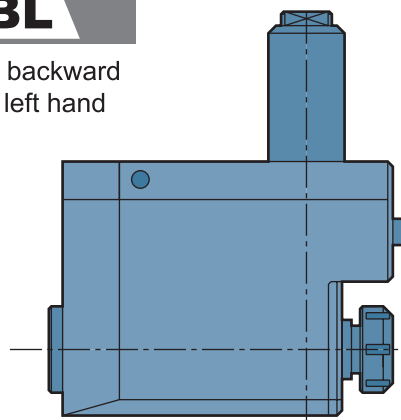
**BR**

B: backward  
R: right hand



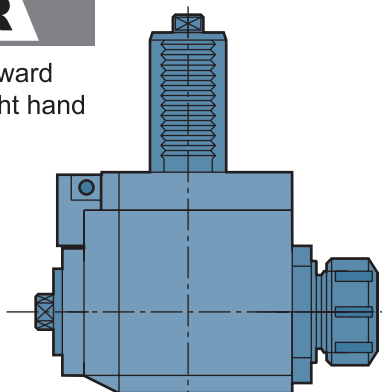
**BL**

B: backward  
L: left hand



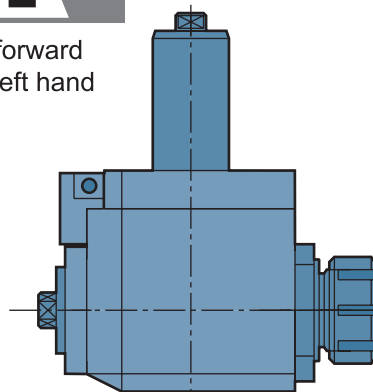
**FR**

F: forward  
R: right hand



**FL**

F: forward  
L: left hand



**TXX**

T: Tapping

**EX:**

- BR4018093290 it's VDI 40, right hand, coupling type 1809, backward come with ER 32 nut. P.C.D. is 90mm
  - FL3054822555 it's VDI 30 left hand coupling type 5482 (B15x12) forward, come with ER 25 nut. P.C.D. is 55mm
- ※ ORDER MADE, NOT REFUNDABLE.

VDI



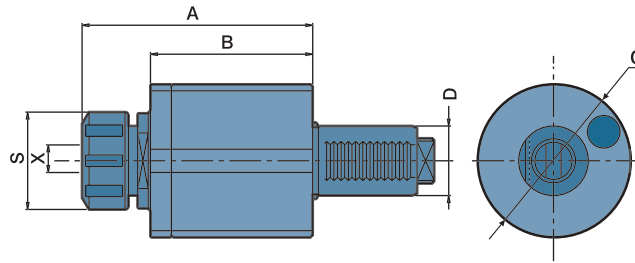
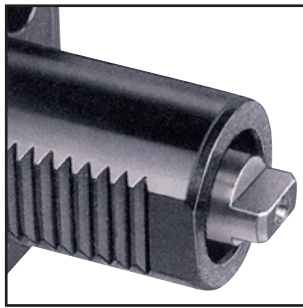


# Axial Drilling And Milling Heads



✂ ORDER MADE, NOT REFUNDABLE.

DIN 1809



Power Transmission According To DIN 1809

- External coolant supply
- Collet is not included
- To be used for collet DIN 6499

## DIMENSIONS

ORDER NO.	D DIN 69880	X Capacity	S	Maximum R.P.M.	i	A	B	C	CODE NO.
DA20180916	20	1-10 ER16	32	6000	1 : 1	77	49	58	5006-001
DA30180925	30	1-16 ER25	42	6000	1 : 1	101	70	68	5006-002
DA40180932	40	2-20 ER32	50	6000	1 : 1	111	73.5	86	5006-003
DA50180940	50	3-26 ER40	63	6000	1 : 1	120	81.5	96	5006-004
DA60180950	60	10-34 ER50	78	6000	1 : 1	140	88.5	116	5006-005



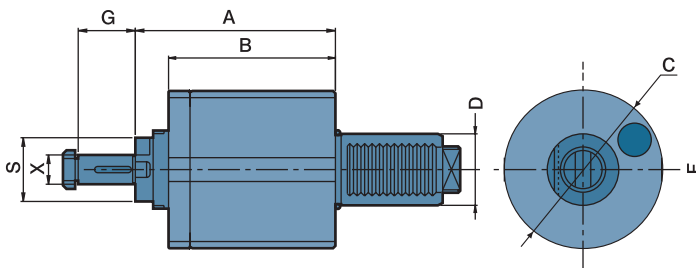
## Axial Tapping Heads

### DIMENSIONS

ORDER NO.	D DIN 69880	X Capacity	S	Maximum R.P.M.	i	A	B	C	CODE NO.
TDA30180916	30	1-10 ER16	30	3000	1 : 1	108	71.5	68	5006-006
TDA40180920	40	1-13 ER20	35	3000	1 : 1	95.5	55	86	5006-007
TDA50180925	50	1-16 ER25	42	3000	1 : 1	123	81.5	96	5006-008
TDA60180932	60	2-20 ER32	50	3000	1 : 1	158.5	88.5	116	5006-009

## Axial Milling Heads

DIN 1809



- External coolant and intermediate rings supply
- To be used for cutter arbor according to DIN 6358

### DIMENSIONS

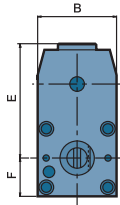
ORDER NO.	D DIN 69880	X Capacity	S	Maximum R.P.M.	i	A	B	C	G	CODE NO.
DA30180916C	30	16	32	3000	1 : 1	91.5	70	68	27	5006-010
DA40180922C	40	22	40	3000	1 : 1	86.5	73.5	86	31	5006-012
DA50180922C	50	22	40	3000	1 : 1	117	81.5	96	31	5006-013
DA50180927C	50	27	40	3000	1 : 1	117	81.5	96	33	5006-014



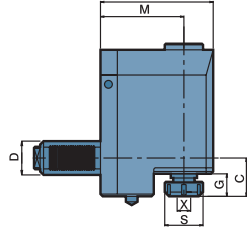
# Radial Drilling And Milling Heads-Back Ward Type



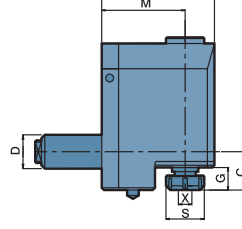
MODE: BL  
LEFT-HAND



MODE: BR  
RIGHT-HAND



DIN 1809



- External coolant supply
- Collet is not included
- To be used for collet DIN 6499

## DIMENSIONS

ORDER NO.	D DIN 69880	X Capacity	S	Maximum R.P.M.	i	A	B	C	E	F	G	M	CODE NO.
BR2018091660 BL2018091660	20	1-10 ER16	30	5000	1 : 1	83	50	35	70	27	27	60	5006-015A
BR3018092572 BL3018092572	30	1-16 ER25	42	5000	1 : 1	95	60	41.5	75.5	31.5	29	72	5006-016A
BR4018093290 BL4018093290	40	2-20 ER32	50	5000	1 : 1	124	80	44	110	42	34	90	5006-017
BR5018094090 BL5018094090	50	3-26 ER40	63	5000	1 : 1	129	86	49	112	45	39	90	5006-018
BR60180950106 BL60180950106	60	10-34 ER50	78	5000	1 : 1	154	104	74.5	123	54	52	106	5006-019A



# Radial Tapping Heads-Back Ward Type

## DIMENSIONS

DIN 1809

ORDER NO.	D DIN 69880	X Capacity	S	Maximum R.P.M.	i	A	B	C	E	F	G	M	CODE NO.
TBR3018091672 TBL3018091672	30	1-10 ER16	30	3000	1 : 1	95	60	44	75.5	31.5	32	72	5006-020A
TBR4018092090 TBL4018092090	40	1-13 ER20	35	3000	1 : 1	124	80	59.5	110	42	49.5	90	5006-021
TBR5018092590 TBL5018092590	50	1-16 ER25	42	3000	1 : 1	129	86	54	112	45	36	90	5006-022
TBR60180932106 TBL60180932106	60	2-20 ER32	50	3000	1 : 1	154	104	105	123	54	82.5	106	5006-023A

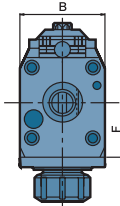


# Radial Drilling And Milling Heads

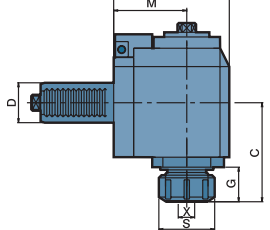
※ ORDER MADE, NOT REFUNDABLE.

DIN 1809

MODE: FL  
LEFT-HAND



MODE: FR  
RIGHT-HAND



- To be used for collet DIN 6499
- Collet is not included
- External coolant supply

## DIMENSIONS

ORDER NO.	D DIN 69880	X Capacity	S	Maximum R.P.M.	i	A	B	C	F	G	M	CODE NO.
FR3018092555 FL3018092555	30	1-16 ER25	42	5000	1 : 1	87	64	74.5	34	26	55	5006-024
FR4018093265 FL4018093265	40	2-20 ER32	50	5000	1 : 1	99	80	71	40	23	65	5006-025
FR5018094075 FL5018094075	50	3-26 ER40	63	5000	1 : 1	115	88	101	56	34	75	5006-026



# Radial Tapping Heads

## DIMENSIONS

DIN 1809

ORDER NO.	D DIN 69880	X Capacity	S	Maximum R.P.M.	i	A	B	C	F	G	M	CODE NO.
TFR3018091655 TFL3018091655	30	1-10 ER16	30	3000	1 : 1	87	64	75	41	30	55	5006-027
TFR4018092065 TFL4018092065	40	1-13 ER20	35	3000	1 : 1	99	80	93.5	40	46	65	5006-028
TFR5018092575 TFL5018092575	50	1-16 ER25	42	3000	1 : 1	115	88	103	56	42	75	5006-029

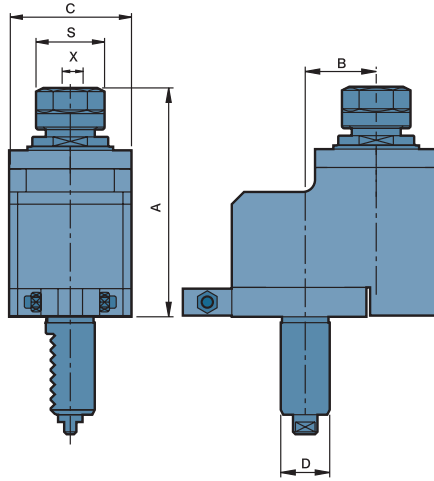


# Axial Drilling And Milling Heads



OFFSET

DIN 1809



- Collet is not included
- To be used for collet DIN 6499
- External coolant supply

## DIMENSIONS

i is speed ratio example:1:2. It's 2 times of speed

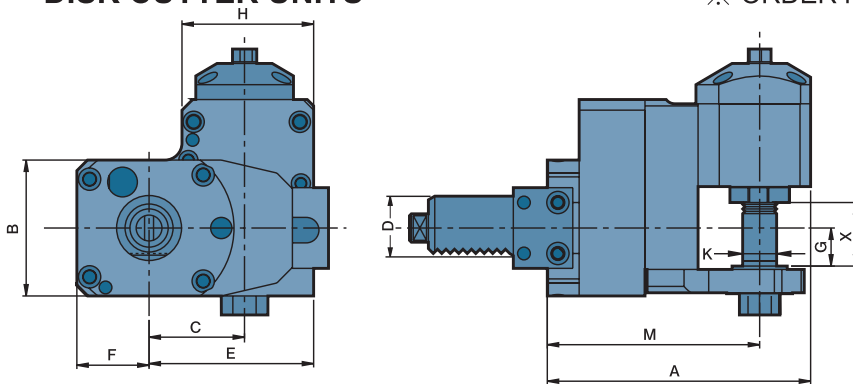
ORDER NO.	D DIN 69880	X Capacity	S	Maximum R.P.M.	i	A	B	C	CODE NO.
DA2018091629	20	1-10 ER16	30	4000	1 : 1	93.5	29	50	5006-030
DA3018092529	30	1-16 ER25	42	4000	1 : 1	100	29	60	5006-031
DA3018092529/1	※30	1-16 ER25	42	8000	1 : 2	100	29	60	5006-032
DA4018093250	40	2-20 ER32	50	4000	1 : 1	125.5	50	75	5006-033
DA5018094065	50	3-26 ER40	63	3000	1 : 1	124	65	86	5006-034



# Radial Milling Heads

DISK CUTTER UNITS

※ ORDER MADE, NOT REFUNDABLE. DIN 1809



- External coolant supply

## DIMENSIONS

i;(3:1),It's 3 times of speed decrease

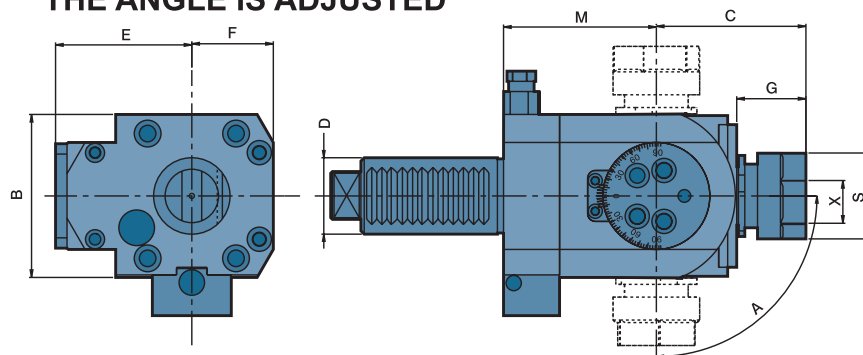
ORDER NO.	D DIN 69880	X Capacity	Maximum R.P.M.	i	A	B	C	E	F	G	H	K	M	CODE NO.
BR30180916C/3 BL30180916C/3	30	16	3000	3 : 1	133	64	45	77.5	49	5	65	16	107.5	5006-035



# Angular Heads

THE ANGLE IS ADJUSTED

DIN 1809



- To be used for collet DIN 6499
- External coolant supply
- Collet is not included

## DIMENSIONS

ORDER NO.	D DIN 69880	X Capacity	S	Maximum R.P.M.	i	A	B	C	E	F	G	M	CODE NO.
DA30180920B	30	1-13 ER20	35	4000	1 : 1	±90°	64	59	54	32	27	60	5006-036A

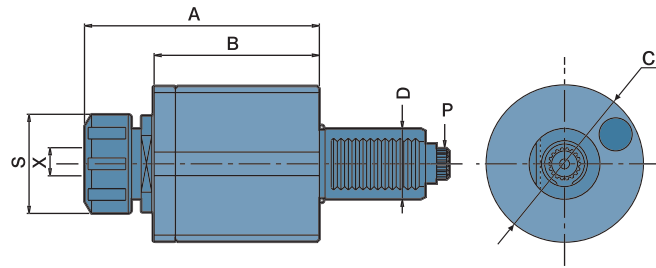
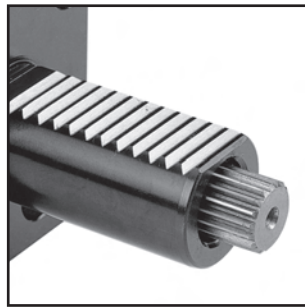


# Axial Drilling And Milling Heads



✘ ORDER MADE, NOT REFUNDABLE.

DIN 5480



Power Transmission According To DIN 5480

- External coolant supply
- To be used for collet DIN 6499
- Collet is not included

## DIMENSIONS

ORDER NO.	D DIN 69880	X Capacity	S	Maximum R.P.M.	i	A	B	C	P DIN 5480	CODE NO.
DA30548025	30	1-16 ER25	42	6000	1 : 1	101	70	68	W16X0.8	5006-037
DA40548032	40	2-20 ER32	50	6000	1 : 1	111	75	86	W20X0.8	5006-038
DA50548040	50	3-26 ER40	63	6000	1 : 1	122	82	96	W24X1.25	5006-038A

## Axial Tapping Heads

DIN 5480

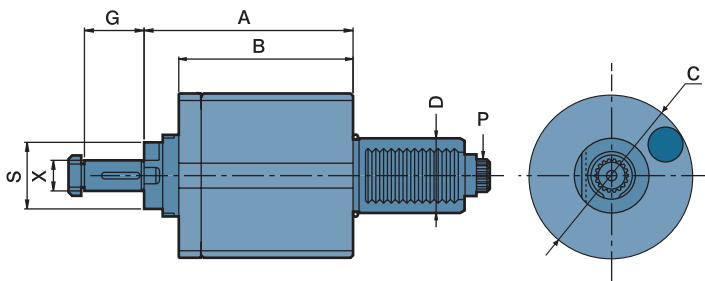
## DIMENSIONS

ORDER NO.	D DIN 69880	X Capacity	S	Maximum R.P.M.	i	A	B	C	P DIN 5480	CODE NO.
TDA30548016	30	1-10 ER16	30	3000	1 : 1	108	71.5	68	W16X0.8	5006-039A
TDA40548020	40	1-13 ER20	35	3000	1 : 1	95.5	55	86	W20X0.8	5006-040A



## Axial Milling Heads

DIN 5480



- To be used for cutter arbor according to DIN 6358
- External coolant and intermediate rings supply

## DIMENSIONS

ORDER NO.	D DIN 69880	X Capacity	S	Maximum R.P.M.	i	A	B	C	G	P DIN 5480	CODE NO.
DA30548016C	30	16	32	3000	1 : 1	91.5	70	68	27	W16X0.8	5006-041
DA40548016C	40	16	32	3000	1 : 1	68.5	55	86	27	W20X0.8	5006-042
DA40548022C	40	22	32	3000	1 : 1	68.5	55	86	31	W20X0.8	5006-043



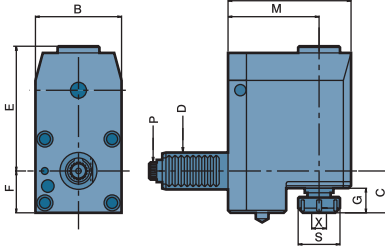


# Radial Drilling And Milling Heads-Backward Type

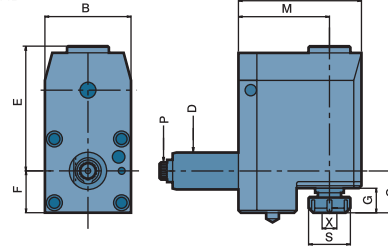


✳ ORDER MADE, NOT REFUNDABLE.

**MODE: BL**  
LEFT-HAND



**MODE: BR**  
RIGHT-HAND



- To be used for collet DIN 6499
- Collet is not included
- External coolant supply

## DIMENSIONS

ORDER NO.	D DIN 69880	X Capacity	S	Maximum R.P.M.	i	A	B	C	E	F	G	M	P DIN 5480	CODE NO.
BR3054802572 BL3054802572	30	1-16 ER25	42	5000	1 : 1	95	60	41.5	75.5	31.5	28.5	72	W16X0.8	5006-044A
BR4054803290 BL4054803290	40	2-20 ER32	50	5000	1 : 1	124	80	44	110	42	34	90	W20X0.8	5006-045
BR5054804090 BL5054804090	50	3-26 ER40	63	5000	1 : 1	129	86	49	112	42	39	90	W24X1.25	5006-045A

# Radial Tapping Heads-Set Back

DIN 5480

## DIMENSIONS

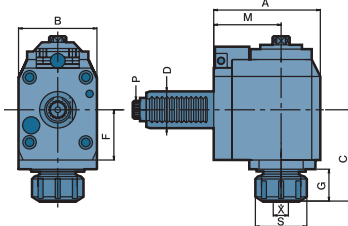
ORDER NO.	D DIN 69880	X Capacity	S	Maximum R.P.M.	i	A	B	C	E	F	G	M	P DIN 5480	CODE NO.
TBR3054801672 TBL3054801672	30	1-10 ER16	30	3000	1 : 1	95	60	44	75.5	31.5	32	72	W16X0.8	5006-046A
TBR4054802090 TBL4054802090	40	1-13 ER20	35	3000	1 : 1	124	80	59.5	110	42	49.5	90	W20X0.8	5006-047



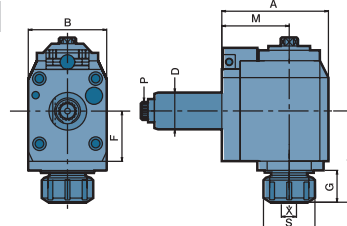
# Radial Drilling And Milling Heads

DIN 5480

**MODE: FL**  
LEFT-HAND



**MODE: FR**  
RIGHT-HAND



- To be used for collet DIN 6499
- Collet is not included
- External coolant supply

## DIMENSIONS

ORDER NO.	D DIN 69880	X Capacity	S	Maximum R.P.M.	i	A	B	C	F	G	M	P DIN 5480	CODE NO.
FR3054802555 FL3054802555	30	1-16 ER25	42	5000	1 : 1	97	64	74.5	41	26	55	W16X0.8	5006-048
FR3054802585 FL3054802585	30	1-16 ER25	42	5000	1 : 1	117	64	74.5	41	26	85	W16X0.8	5006-049
FR4054803265 FL4054803265	40	2-20 ER32	50	5000	1 : 1	99	80	71	40	23	65	W20X0.8	5006-050
FR4054803285 FL4054803285	40	2-20 ER32	50	5000	1 : 1	119	80	71	40	23	85	W20X0.8	5006-051
FR40548032100 FL40548032100	40	2-20 ER32	50	5000	1 : 1	134	80	71	40	23	100	W20X0.8	5006-052

# Radial Tapping Heads

## DIMENSIONS

ORDER NO.	D DIN 69880	X Capacity	S	Maximum R.P.M.	i	A	B	C	F	G	M	P DIN 5480	CODE NO.
TFR3054801655 TFL3054801655	30	1-10 ER16	30	3000	1 : 1	97	64	75	41	30	55	W16X0.8	5006-053A
TFR3054801685 TFL3054801685	30	1-10 ER16	30	3000	1 : 1	117	64	75	41	30	85	W16X0.8	5006-054
TFR4054802065 TFL4054802065	40	1-13 ER20	35	3000	1 : 1	99	80	70	40	25	65	W20X0.8	5006-055
TFR4054802085 TFL4054802085	40	1-13 ER20	35	3000	1 : 1	119	80	70	40	25	85	W20X0.8	5006-056



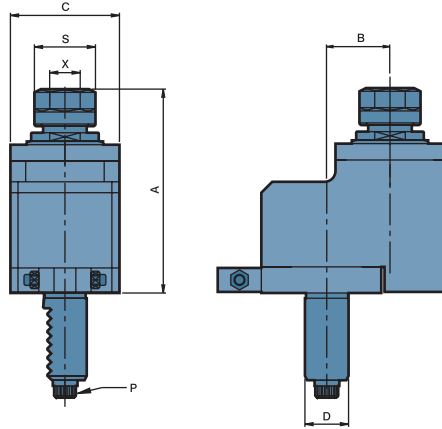
# Axial Drilling And Milling Heads-Offset



OFFSET

✳ ORDER MADE, NOT REFUNDABLE.

DIN 5480



- Collet is not included
- To be used for collet DIN 6499
- External coolant supply

## DIMENSIONS

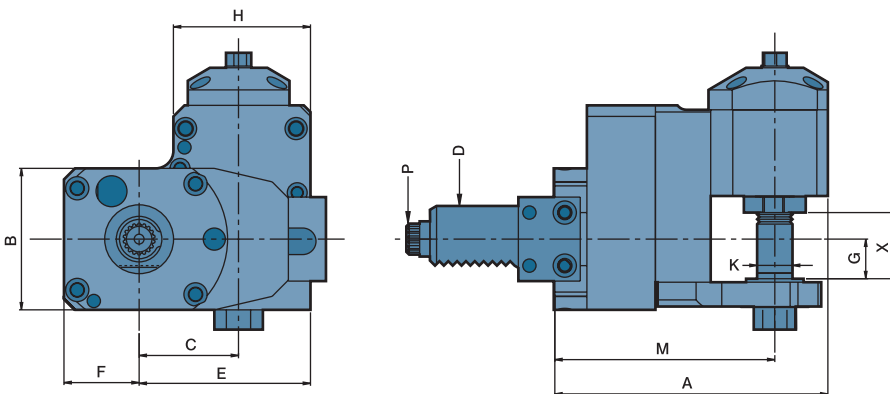
ORDER NO.	D DIN 69880	X Capacity	S	Maximum R.P.M.	i	A	B	C	P DIN 5480	CODE NO.
DA3054802529	30	1-16 ER25	42	4000	1 : 1	100	29	60	W16X0.8	5006-057
DA3054802529/1	✳ 30	1-16 ER25	42	8000	1 : 2	100	29	60	W16X0.8	5006-058
DA4054803250	40	2-20 ER32	50	4000	1 : 1	125	65	86	W20X0.8	5006-059



# Radial Drilling And Milling Heads

DISK CUTTER UNITS

DIN 5480



- External coolant supply

## DIMENSIONS

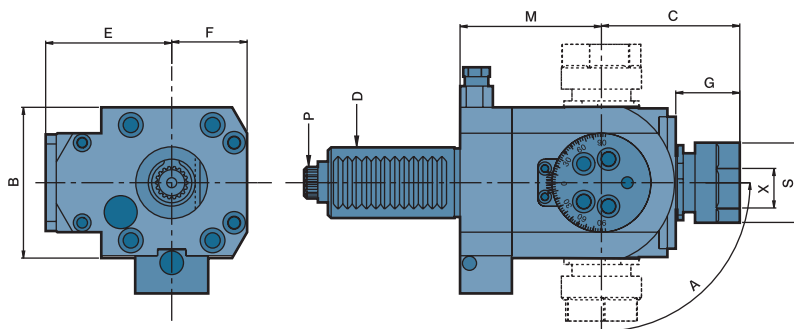
ORDER NO.	D DIN 69880	X Capacity	Maximum R.P.M.	i	A	B	C	E	F	G	H	K	M	P DIN 5480	CODE NO.
BR30548016C/3 BL30548016C/3	30	16	3000	3 : 1	133	64	45	77.5	49	5	65	16	108.5	W16X0.8	5006-060



# Angular Heads

ANGLE IS ADJUSTED

DIN 5480



- Collet is not included
- To be used for collet DIN 6499
- External coolant supply

## DIMENSIONS

ORDER NO.	D DIN 69880	X Capacity	S	Maximum R.P.M.	i	A	B	C	E	F	G	M	P DIN 5480	CODE NO.
DA30548020B	30	1-13 ER20	35	4000	1 : 1	±90°	64	59	54	32	27	67	W16X0.8	5006-061A