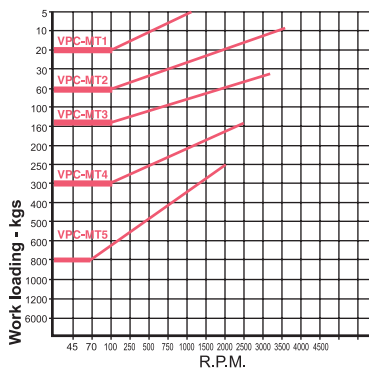
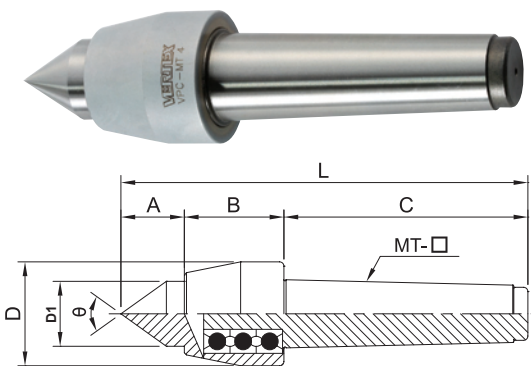




# Light Duty Live Center



- Center is made of SCM420 alloy steel by heat treatment to provide higher rigidity (HRC60±2°) and satisfied wear-resistance.
- Center is constituted by ball bearings assembly.
- Applicable to middle-speed & high-speed lathe with light load.

※Suggested tailstock pressure under 6 kg/cm<sup>2</sup>

FOR VPC-TYPE

Unit:mm

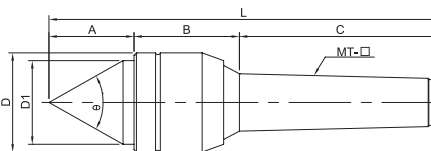
ORDER NO.	A	B	C	D	D1	L	Accuracy	Speed Max R.P.M.	θ	G.W. weight kgs	PACKING LxWxH	CODE NO.
VPC-MT1	21	31	56	32	16	108	0.005	3200	60°	0.3	115 x 136 x 38	5001-001
VPC-MT2	26	37	69	40	22	132	0.005	2800	60°	0.5	140 x 45 x 45	5001-002
VPC-MT3	32	46	86	45	26	164	0.005	2000	60°	0.9	170 x 50 x 52	5001-003
VPC-MT4	34	46	108	48	30	188	0.005	1800	60°	1.3	195 x 58 x 56	5001-004
VPC-MT5	50	62	136	68	45	248	0.005	1500	60°	3.2	268 x 86 x 77	5001-005



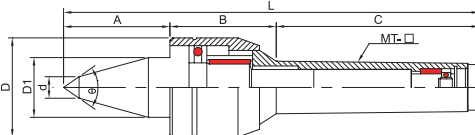
# Live Lathe Center



A TYPE



B TYPE



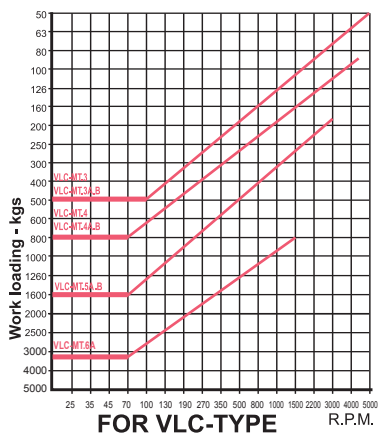
- Center shaft & main body is made of SCM420 alloy steel by heat treatment to provide higher rigidity (HRC60±2°) and satisfied wear-resistance.
- Center is constituted by thrust ball bearing, needle roller bearings & ball bearings assembly.
- Applicable to middle-speed & high-speed lathe with heavy load.

※ B TYPE SUITABLE FOR SMALL -WORKPIECE MACHINING.

※Suggested tailstock pressure under 6 kg/cm<sup>2</sup>

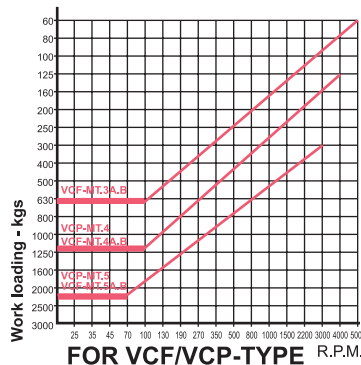
Unit:mm

ORDER NO.	TYPE	A	B	C	D	D1	d	L	Accuracy	Speed Max R.P.M.	θ	G.W. weight kgs	PACKING LxWxH	CODE NO.
VLC-212	MT2A	28	35	69	32	23	-	132	0.005	4000	60°	0.3	173 x 43 x 40	5001-010
VLC-213	MT3A	36	44	86	41	35	-	166	0.005	3000	60°	0.9	198 x 67 x 51	5001-011
VLC-214	MT4A	41	51	108	47	40	-	200	0.005	2500	60°	1.5	240 x 70 x 61	5001-012
VLC-215	MT5A	54	72	136	65	52	-	262	0.005	2000	60°	3.8	290 x 92 x 80	5001-013
VLC-213B	MT3B	46	44	86	41	25	10	176	0.005	3000	60°	0.9	198 x 67 x 51	5001-014
VLC-214B	MT4B	55	51	108	47	32	12	214	0.005	2500	60°	1.5	240 x 70 x 61	5001-015

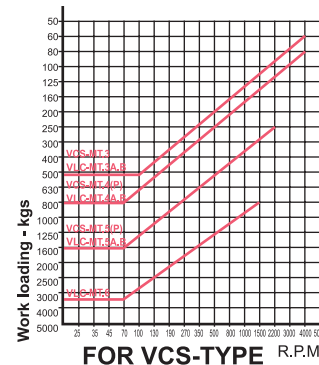


FOR VLC-TYPE

THE CHART FOR LOADING WEIGHT WITH R.P.M.



FOR VCF/VCP-TYPE



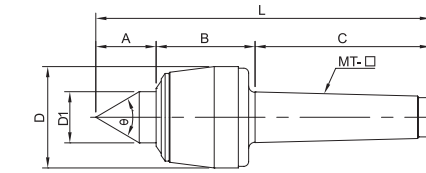
FOR VCS-TYPE



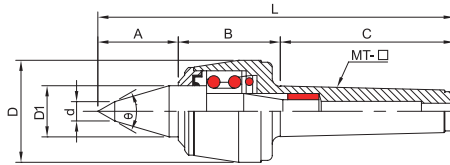
# High-Speed NC Live Center



A TYPE



B TYPE



## WATER-PROOF TYPE

- Center shaft is made of SUJ2 material under vacuum heat treatment to provide higher rigidity (HRC60°±2°) and satisfied wear-resistance.
- Center is constituted by dual ball bearing. Thrust bearing & needle roller bearing assembly.
- Applicable to high-speed lathe & NC lathe with heavy load
- water-proof.
- ※ B Type is applicable in the metal workings on small diameter workpieces.

※Suggested tailstock pressure under 6 kg/cm<sup>2</sup>

Unit:mm

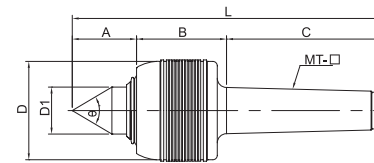
ORDER NO.	TYPE	A	B	C	D	D1	d	L	Accuracy	Speed Max R.P.M.	θ	G.W. weight kgs	PACKING LxWxH	CODE NO.
VLC-MT3A	MT3A	39	51	86	53	30	-	176	0.005	4000	60°	1.3	240 x 70 x 61	5001-020
VLC-MT4A	MT4A	42	62	108	63	32	-	212	0.005	3000	60°	2.2	253 x 92 x 80	5001-021
VLC-MT5A	MT5A	57	71	136	83	40	-	264	0.005	2500	60°	4.5	303 x 108 x 101	5001-022
VLC-MT6A	MT6A	80	111	189	128	70	-	380	0.008	1500	60°	15.6	410 x 177 x 168	5001-023
VLC-MT3B	MT3B	48	52	86	53	30	10	186	0.005	4000	60°	1.4	240 x 70 x 61	5001-024
VLC-MT4B	MT4B	52	62	108	63	32	12	218	0.005	3000	60°	2.2	253 x 92 x 80	5001-025
VLC-MT5B	MT5B	67	71	136	83	40	14	274	0.005	2500	60°	4.5	303 x 108 x 101	5001-026



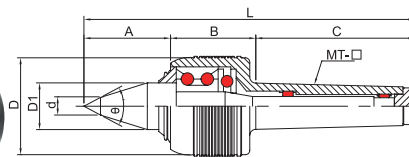
# High-Load NC Live Center



A TYPE



B TYPE



- Shaft uses material SUJ2: through vacuum heat treatment, it is even more durable, hardness is as high as (HRC60°±2°) and satisfied wear-resistance.
- Front end is constituted by angular contact ball bearing & thrust ball bearing. middle & rear ends are comprised of needle roller bearing assembly.
- These centers are suitable for NC lathe at high-speed & heavy-load operation, water-proof.
- ※ B Type is applicable in the metal workings on small workpieces.

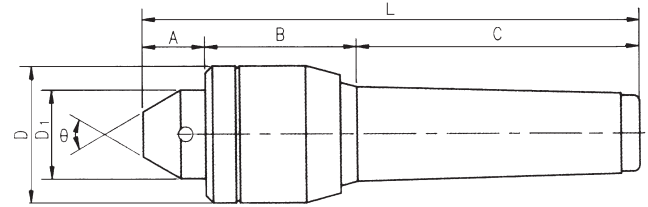
※Suggested tailstock pressure under 6 kg/cm<sup>2</sup>

Unit:mm

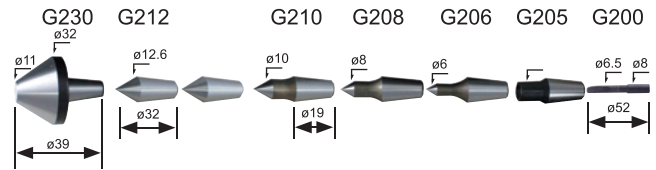
ORDER NO.	A	B	C	D	D1	d	L	Accuracy	Speed Max R.P.M.	θ	G.W. weight kgs	PACKING LxWxH	CODE NO.
VCF-MT3A	38	50	86	53	30	-	174	0.003	5000	60°	1.3	240 x 70 x 61	5001-030
VCF-MT4A	45	60	108	68	32	-	213	0.003	4500	60°	2.4	253 x 92 x 80	5001-031
VCF-MT5A	52	70	136	87	40	-	258	0.003	3000	60°	5	303 x 108 x 101	5001-032
VCF-MT3B	52	50	86	53	25	10	188	0.003	5000	60°	1.3	240 x 70 x 61	5001-033
VCF-MT4B	55	60	108	68	32	12	223	0.003	4500	60°	2.4	253 x 92 x 80	5001-034
VCF-MT5B	67	70	136	87	40	14	273	0.003	3000	60°	5	303 x 108 x 101	5001-035



# Inter-changeable Points Live Center



- Complete set with 7 Interchangeable Points for various processing.
- Packed in case.
- High accuracy and durability as well as complete rust-proof performance
- Center made of SCM420 special tool steel hardened and ground can be used for heavy duty work.



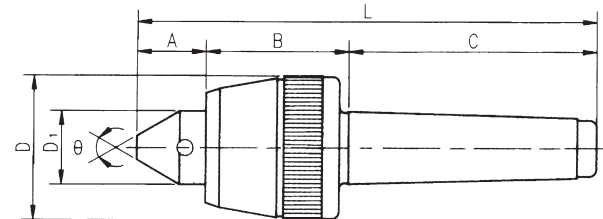
※Suggested tailstock pressure under 6 kg/cm<sup>2</sup>

Unit:mm

ORDER NO.	TYPE	A	B	C	D	D1	L	Accuracy	Speed Max. R.P.M.	θ	G.W. weight kgs	PACKING LxWxH	CODE NO.
VLC-312	MT2	22	36	69	32	25	127	0.008	4000	60°	0.9	166 x 105 x 63	5001-040
VLC-313	MT3	23	44	86	41	30	153	0.008	3000	60°	1.4	255 x 138 x 100	5001-041
VLC-314	MT4	23	51	108	47	32	182	0.008	2500	60°	2	255 x 138 x 100	5001-042

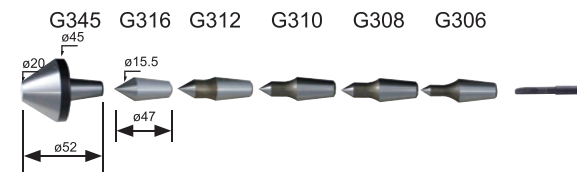
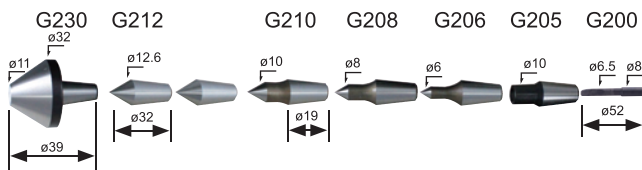


# High Speed NC Interchangeable Points Live Center



VCS-MT3, MT4

VCS-MT4P, MT5P



- Center shaft is made of SUJ2 material under vacuum heat treatment to provide higher rigidity (HRC60°±2°) and satisfied wear-resistance.
- Center is constituted by dual ball bearing. Thrust bearing & needle roller bearing assembly.
- Suit for to high-speed lathe & NC lathe with heavy load, water-proof.

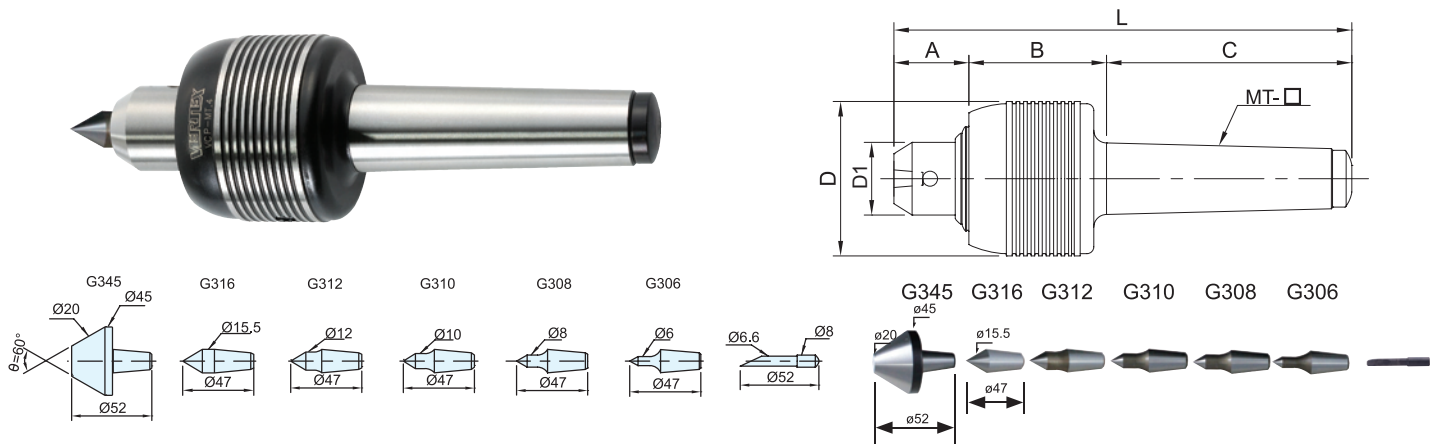
※Suggested tailstock pressure under 6 kg/cm<sup>2</sup>

Unit:mm

ORDER NO.	A	B	C	D	D1	L	Accuracy	Speed Max. R.P.M.	θ	G.W. weight kgs	PACKING LxWxH	CODE NO.
VCS-MT3	28	51	86	53	30	165	0.008	4000	60°	1.8	255 x 138 x 100	5001-050
VCS-MT4	30	62	108	63	32	196	0.008	3500	60°	2.5	255 x 138 x 100	5001-051
VCS-MT4P	30	62	108	63	32	196	0.008	3500	60°	2.7	235 x 130 x 80	5001-052
VCS-MT5P	34	71	136	83	40	237	0.008	2500	60°	5.1	275 x 147 x 97	5001-053



# High Load Interchangeable Points Live Center



- Shaft uses material SUJ2:through vacuum heat treatment, it is even more durable, hardness is as high as (HRC60°±2°) and satisfied wear-resistance.
- Front end is constituted by SKF angular contact ball bearing & thrust ball bearing. middle & rear ends are comprised of needle roller bearing assembly.
- These centers are suitable for NC lathe at high-speed & heavy-load operation, water-proof.

※Suggested tailstock pressure under 6 kg/cm<sup>2</sup>

Unit:mm

ORDER NO.	A	B	C	D	D1	L	Accuracy	Speed Max. R.P.M.	θ	G.W. weight kgs	PACKING LxWxH	CODE NO.
VCP-MT3	30	50	86	53	30	170	0.005	5000	60°	1.72		5001-059
VCP-MT4	30	64	108	68	32	202	0.005	4500	60°	3	253 x 130 x 80	5001-060
VCP-MT5	37	70	136	87	40	243	0.005	3000	60°	5.5	275 x 147 x 97	5001-061



# High Speed Live Center



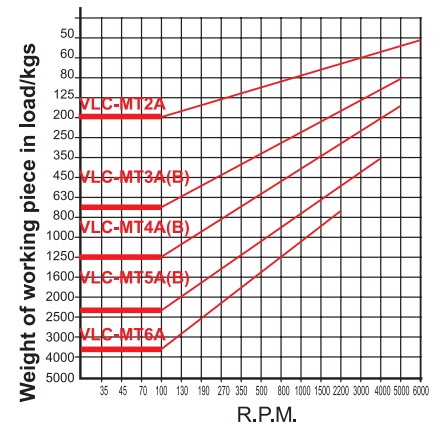
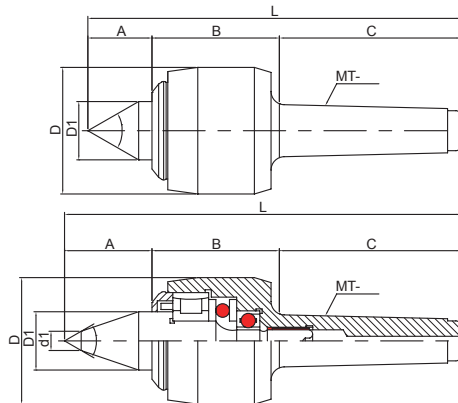
EURO STYLE



A TYPE



B TYPE



- Suit for to CNC lathes, can be used at high speed turning and with waterproof design.
  - The shaft is made of alloy steel and through vacuum heat treatment HRC 60°±2°. It has high rigidity and high durability.
  - The center uses the combination of roller bearing, thrust ball bearing and ball bearing.
- ※B Type is applicable in the metal workings on small workpieces.

※Suggested tailstock pressure under 6 kg/cm<sup>2</sup>

Unit:mm

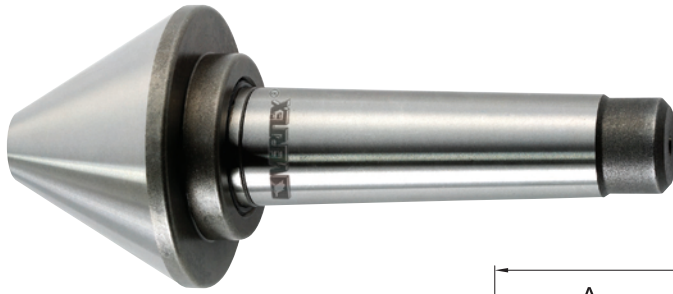
ORDER NO.	TYPE	A	B	C	D	D1	L	d1	Accuracy	Speed Max. R.P.M	θ	G.W. weight	PACKING L x W x H	CODE NO.
VLC-512	MT2A	20	46	69	32	13	135	-	0.003	6000	60°	0.8	240x70x61	5001-062
VLC-513	MT3A	34	61	86	58	25	181	-	0.003	5200	60°	1.8	253x92x80	5001-063
VLC-514	MT4A	44	67	114	76	35	225	-	0.003	5000	60°	3.2	290x92x80	5001-064
VLC-515	MT5A	55	88	142	95	45	285	-	0.003	3500	60°	5.6	303x108x101	5001-065
VLC-513B	MT3B	45	61	86	58	25	192	10	0.003	5200	60°	1.8	290x92x80	5001-067
VLC-514B	MT4B	55	67	114	76	35	236	12	0.003	5000	60°	3.2	253x92x80	5001-068
VLC-515B	MT5B	67	88	142	95	45	297	14	0.003	3500	60°	6.0	303x108x101	5001-069



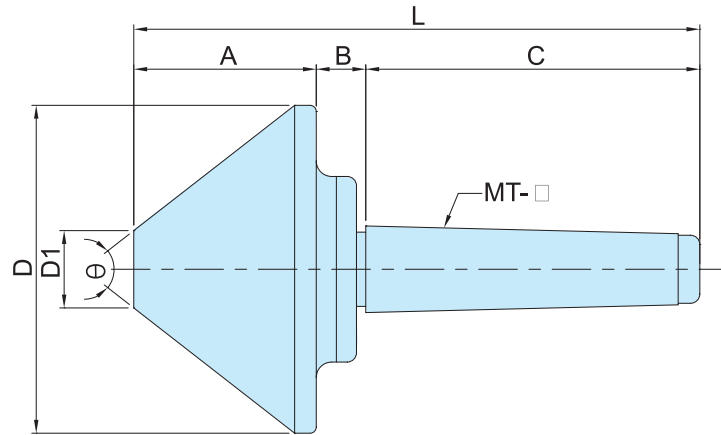
# Bull Nose Pipe Center



Pipe Live Center



HARDEN PROCESS : HRC50°  
 CONCENTRICITY : 0.005mm  
 ROUNDNESS : 0.005mm  
 MATERIAL : STEEL



※Suggested tailstock pressure under 6 kg/cm<sup>2</sup>

Unit:mm

ORDER NO.	SIZE MTxD	A	B	C	D	D1	L	Speed Max. R.P.M.	θ	R.P.M. 100 LOAD WEIGHT (KGS)	G.W. weight (KGS)	CODE NO.
VLC-422	MT2×2 1/2"	48	12	69	63.5	12	128	3000	60°	200	0.9	5001-070A
VLC-423	MT2×3"	56	12	69	78	19	138	2500	60°	400	1.3	5001-070B
VLC-424	MT2×4"	58	12	69	106	32	141	2000	70°	640	2.3	5001-070C
VLC-433	MT3×3"	52	18	86	78	19	156	3300	60°	400	1.6	5001-070
VLC-434	MT3×4"	59	16	86	106	32	161	3000	70°	500	2.8	5001-071
VLC-435	MT3×5"	71	12	89	128	35	173	1900	70°	960	4.2	5001-071A
VLC-436	MT3×6"	81	12	89	156	50	183	1900	70°	1200	7.3	5001-071B
VLC-443	MT4×3"	52	18	108	78	19	178	3300	60°	400	1.8	5001-072
VLC-444	MT4×4"	59	16	108	106	32	183	3000	70°	500	3.1	5001-073
VLC-445	MT4×5"	73	12	108	128	35	193	2000	70°	650	4.9	5001-074
VLC-446	MT4×6"	88	12	108	156	50	208	1900	70°	800	7.7	5001-075
VLC-448	MT4×8"	98	12	108	206	54	218	1500	75°	1300	15.4	5001-076
VLC-4410	MT4×10"	107	13	110	258	92	236	1000	80°	2000	24	5001-076A
VLC-454	MT5×4"	58	12	143	106	32	214	2000	70°	640	4	5001-077A
VLC-455	MT5×5"	73	12	136	128	35	221	2000	70°	650	5.8	5001-077
VLC-456	MT5×6"	88	12	136	156	50	236	1900	70°	800	8.6	5001-078
VLC-458	MT5×8"	98	12	136	206	54	246	1500	75°	1600	15.7	5001-079
VLC-4510	MT5×10"	107	13	143	258	92	264	1000	80°	2200	25.5	5001-079A
VLC-4512	MT5×12"	110	25	143	306	120	281	1000	90°	3000	37.5	5001-079B
VLC-466	MT6×6"	81	12	185	156	50	281	1900	70°	1200	12	5001-080A
VLC-468	MT6×8"	103	13	185	206	54	298	1500	75°	2000	15.8	5001-080
VLC-4610	MT6×10"	107	13	185	258	92	306	1000	80°	2500	28	5001-081
VLC-4612	MT6×12"	110	25	185	306	120	323	1000	90°	3000	40	5001-082



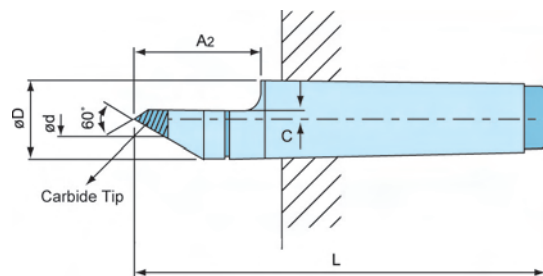


# Lathe Center



- Half diameter
- High precision
- Carbide tip
- DIN 806

**NEW**



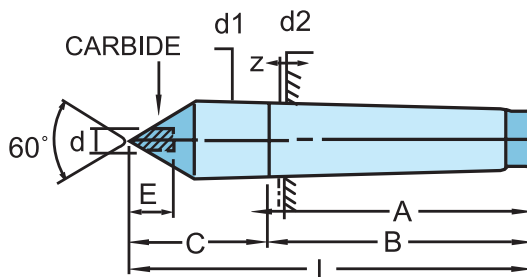
※Suggested tailstock pressure under 6 kg/cm<sup>2</sup>

ORDER NO.	SIZE	A2	C	ØD	Ød	L	Weight (kgs)	CODE NO
VLC-117	MT3	41	3	24	9	124	0.33	5001-086
VLC-118	MT4	54	4	31.3	11.5	158	0.72	5001-087
VLC-119	MT5	69	4.5	44.5	13	198	1.73	5001-088



# Lathe Center

- K20 Carbide tipped-HRC 70°
- Hardened & precision ground.
- Concentricity within.0002"(0.005mm)
- DIN806



※Suggested tailstock pressure under 6 kg/cm<sup>2</sup>

ORDER NO.	SIZE	A	B	C	E	L	d2	d1	d	Weight (kgs)	CODE NO.
VLC-112	MT-2	69	67	31	8	100	17.780	18.0	6	0.2	5001-090
VLC-113	MT-3	89	81	39	10	125	23.825	24.1	8	0.4	5001-091
VLC-114	MT-4	109	102.5	46	14	165	31.267	31.6	10	0.8	5001-092
VLC-115	MT-5	136	129.5	64	18	200	44.399	44.7	14	2.1	5001-093
VLC-116	MT-6	190	182	80	30	270	63.648	63.8	18	5.7	5001-094

Unit:mm

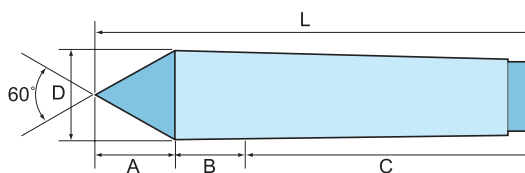
LATHE CENTER



# Dead Center

- Suit for lathe & grinding machine
- Hardened & precision ground
- DIN806

**NEW**



※Suggested tailstock pressure under 6 kg/cm<sup>2</sup>

ORDER NO.	SIZE	A	B	C	D	L	Weight (kgs)	CODE NO.
VLC-126	MT2	18	7	75	19	100	0.16	5001-111
VLC-127	MT3	24	10	91	25	125	0.34	5001-112
VLC-128	MT4	30	11	114	32	155	0.73	5001-113
VLC-129	MT5	39	16	145	46	200	1.9	5001-114
VLC-130	MT6	54	29	187	64	270	5.12	5001-115



# Work-Driving Center

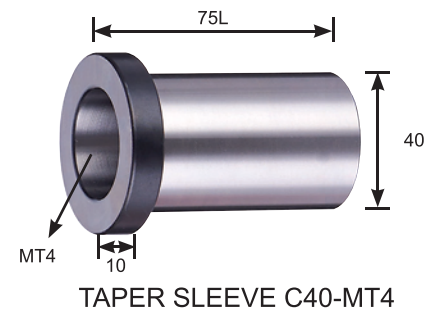


VDK-15

VDK-23

VDK-32

### OPTIONAL :



TAPER SLEEVE C40-MT4

- This Clamp-free center is comprised of excellent mechanical structure, nearly free of breakdown. main body & center shaft are made of SLD material by heat treatment(HRC62°). Driving is required for traditional lathe machining to prevent workpiece from stop.
- This clamp-free center with 6 T & 8T design on end surface is able to securely support workpiece surface to fulfill easy and rapid machining.

※Suggested tailstock pressure under 6 kg/cm<sup>2</sup>

Unit:mm

ORDER NO.	Center Shaft Size	Outer Dia	Working Range	Weight (KGS)	CODE NO.
VDK-15-MT4	6ø	16ø	16ø-25ø	0.6	5001-100
VDK-23-MT4	8ø	23ø	23ø-32ø	0.7	5001-101
VDK-32-MT4	8ø	32ø	32ø-45ø	0.7	5001-102

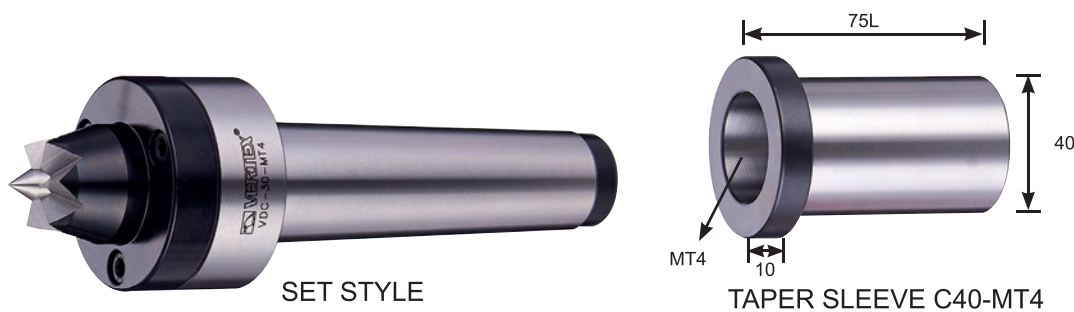
### OPTIONAL:

Unit:mm

ORDER NO.	Suit For Item	Size	CODE NO.
VDK-SLEEVE	VDK-15-MT4	C40-MT4	5001-105
	VDK-23-MT4		
	VDK-32-MT4		



# Work-Driving Center-Changable Tips



SET STYLE

TAPER SLEEVE C40-MT4



STOPPER



CENTER

※Suggested tailstock pressure under 6 kg/cm<sup>2</sup>

ORDER NO.	Center Shaft Size	Stopper Outer Dia	Working Range	Weight (KGS)	CODE NO.
VDC-30-MT4	6ø, 8ø, 10ø	16ø, 23ø, 30ø	15ø-45ø	2.63	5001-106

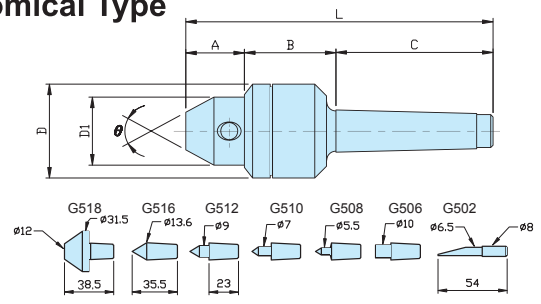
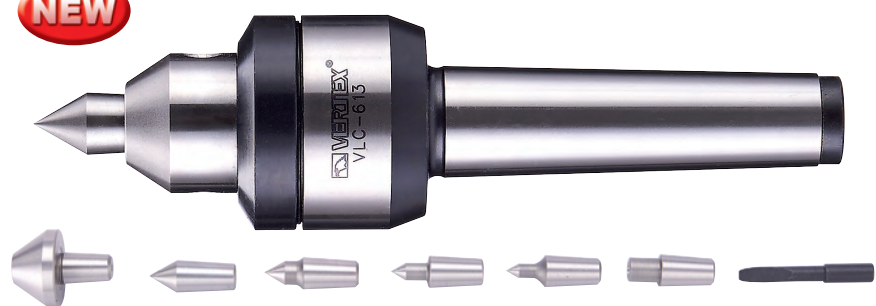


# Inter-Changeable Point Rolling Center



Economical Type

**NEW**



- 7 points / set
- Concentricity :  $\pm 0.008\text{mm}$
- With high grade bearing

※Suggested tailstock pressure under  $6 \text{ kg/cm}^2$

Unit:mm

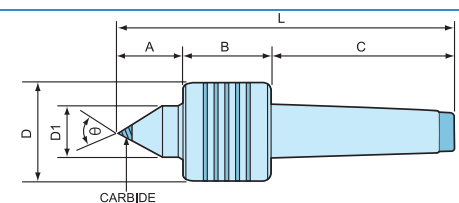
ORDER NO.	TYPE	A	B	C	D	D1	L	Accuracy	Speed Max R.P.M.	$\theta$	G.W. Weight Kgs	CODE NO.
VLC-612	MT2	24	39	69	40	29	132	0.005	1800	$60^\circ$	0.85	5001-121
VLC-613	MT3	24	43	91	46	30	158	0.005	1600	$60^\circ$	1.1	5001-122
VLC-614	MT4	24	44	107	48	32	175	0.005	1600	$60^\circ$	1.4	5001-123
VLC-615	MT5	25	64	138	63.5	35	227	0.005	1000	$60^\circ$	3.8	5001-124



# Live Lathe Center

**NEW**

LIGHT DUTY



- K20 carbide tipped, HRC 70°
- Hardened & precision ground
- Concentricity :  $0.0002'' (\pm 0.005\text{mm})$

※Suggested tailstock pressure under  $6 \text{ kg/cm}^2$

ORDER NO.	TYPE	A	B	C	D	D1	L	SPEED MAX. R.P.M.	$\theta$	WORK LOADING-KGS	G.W. weight kgs	CODE NO
VLC-172	MT2	32	40	72	41	25	144	2300	$60^\circ$	60	0.55	5001-131
VLC-173	MT3	34	45	88	45	30	167	2000	$60^\circ$	160	0.84	5001-132
VLC-174	MT4	34	45	109	45	30	188	1800	$60^\circ$	300	1.15	5001-133
VLC-175	MT5	50	61	134	68	45	245	1500	$60^\circ$	800	3.3	5001-134



# Drill Chucks Arbor



SLEEVE



ARBOR

MT3.4.5  
-JT-

SLEEVE Please see page C43,C44,C56,C57

ORDER NO.	I.D.xO.D.	D	d	L	I1	I2	kg	CODE NO.
VQ-101	MT2xMT3	23.825	17.780	112	18	67	0.2	3210-001
VQ-102	MT2xMT4	31.267	17.780	124	6.5	67	0.5	3210-002
VQ-103	MT2xMT5	44.399	17.780	156	6.5	67	1.4	3210-003
VQ-104	MT2xMT6						4.13	3210-004
VQ-105	MT3xMT4	31.267	23.825	140	22.5	84	0.4	3210-005
VQ-106	MT3xMT5	44.399	23.825	156	6.5	84	1.3	3210-006
VQ-107	MT3xMT6	63.348	23.825	218	8	84	4	3210-007
VQ-108	MT4xMT5	44.399	31.267	171	21.5	107	1	3210-008
VQ-109	MT4xMT6	63.348	31.267	218	8	107	3.7	3210-009
VQ-110	MT5xMT6	63.348	44.399	218	8	133	2.9	3210-010
VQ-100	MT1xMT3	23.825	12.065	100	6	55	0.2	3210-011
VQ-100-1	MT1xMT2	17.780	12.065	89	14	55	0.22	3210-012
VQ-100-2	MT1xMT4	31.267	12.065	124	6.5	55	0.89	3210-013
VQ-100-3	MT1xMT5	44.399	12.065	156	7	55	1.33	3210-014

ORDER NO.	TAPER	JT NO.	C	H	kg	CODE NO.
VJ-126	MT2	JT3	20.6	34	0.24	3209-006
VJ-126-1	MT2	B16	15.733	29	0.2	3209-006A
VJ-126-3	MT2	B18	17.78	37	0.21	3209-006B
VJ-130	MT2	JT6	17.17	28	0.22	3209-029
VJ-130-2	MT2	JT5	35.89	50	0.5	3209-029A
VJ-130-4	MT2	JT4	28.55	45	0.4	3209-029B
VJ-137	MT2	JT2	14.2	25	0.2	3209-056
VJ-131	MT3	JT6	17.17	26	0.4	3209-030
VJ-131-2	MT3	JT5	35.89	50	0.7	3209-030A
VJ-131-4	MT3	JT33	15.85	28	0.3	3209-030B
VJ-134	MT3	B16	15.733	24	0.3	3209-033
VJ-134-2	MT3	B18	17.78	37	0.4	3209-033A
VJ-138-1	MT3	JT3	20.60	34	0.35	3209-034
VJ-131-2	MT3	JT5	35.89	50	0.7	3209-030A
VJ-138-2	MT3	JT4	28.55	45	0.5	3209-035
VJ-132	MT4	JT6	17.17	26	0.7	3209-031
VJ-132-1	MT4	JT3	20.60	34	0.7	3209-031A
VJ-132-7	MT4	JT4	28.55	45	0.85	3209-031B
VJ-132-4	MT4	JT5	35.89	50	1	3209-031C
VJ-132-5	MT4	JT2	14.2	25	0.64	3209-031D
VJ-132-6	MT4	JT33	15.85	28	0.65	3209-031E
VJ-132-8	MT4	B18	17.78	37	0.7	3209-031F
VJ-135	MT4	B16	15.733	29	0.7	3209-036
VJ-133	MT5	JT6	17.17	26	1.6	3209-032
VJ-133-1	MT5	JT3	20.60	35	1.6	3209-032A
VJ-133-2	MT5	JT4	28.55	46	1.8	3209-032B
VJ-133-3	MT5	JT5	35.89	51	2	3209-032C
VJ-133-4	MT5	JT2	14.2	26	1.6	3209-032D
VJ-133-5	MT5	JT33	15.85	29	1.6	3209-032E

LATHE CENTER



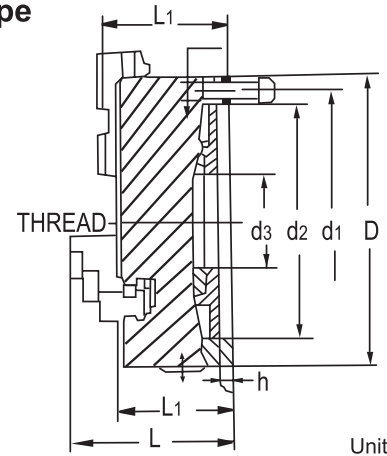
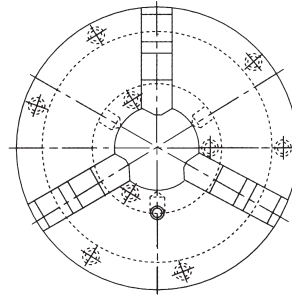


# 3 Jaw Self Centering Chuck



2 Set of Solid Jaw. Plain Back

Normal Type



Unit:mm

## SPECIFICATIONS

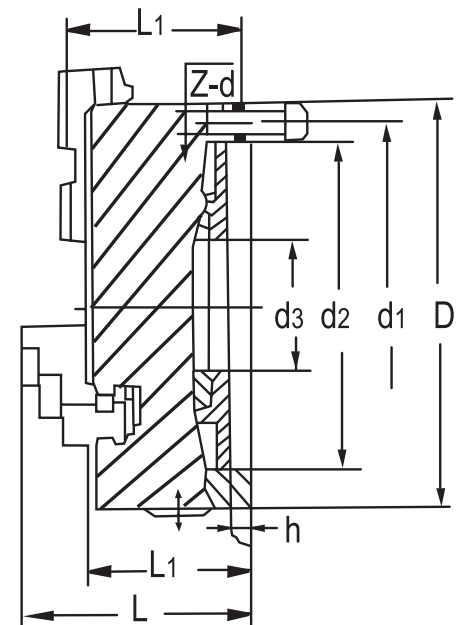
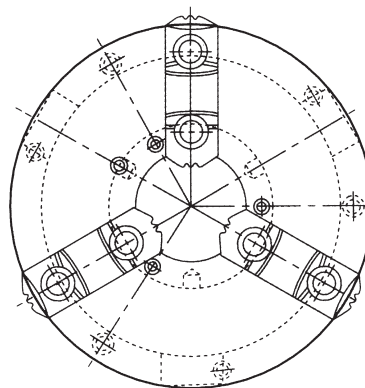
ORDER NO.	D-Size	d1	d2	d3	L	L1	h	THREAD	GRIPPING RANGE		WEIGHT (kgs)	CODE NO.
									O.D. RANGE	I.D. RANGE		
VSC-3A	80mm(3")	66	55	16	66	50	3.5	3-M6	Ø2-Ø70	Ø24-Ø64	2	5002-020A
VSC-4A	100mm(4")	84	72	22	74.5	55	3.5	3-M8	Ø3-Ø90	Ø32-Ø84	3.3	5002-021A
VSC-5A	130mm(5")	115	100	30	78	55	3.5	3-M8	Ø3-Ø110	Ø35-Ø100	5.8	5002-022A
VSC-6A	160mm(6")	142	130	45	95	65	5	3-M8	Ø3-Ø160	Ø48-Ø150	9	5002-023A
VSC-7A	190mm(7 1/2")	172	155	55	105	75	5	3-M10	Ø4-Ø180	Ø56-Ø170	15.1	5002-024A
VSC-8A	200mm(8")	180	165	70	109	75	5	3-M10	Ø4-Ø180	Ø56-Ø170	15.6	5002-025A
VSC-9A	240mm(9 1/2")	215	195	70	122.5	80	5	3-M12	Ø5-Ø220	Ø62-Ø210	26	5002-026A
VSC-10A	250mm(10")	226	206	80	120	80	5	3-M12	Ø6-Ø220	Ø70-Ø250	26.5	5002-027A
VSC-12A	315mm(12")	285	260	100	147.5	90	6	3-M16	Ø10-Ø300	Ø86-Ø290	47	5002-028A
VSC-16A	400mm(16")	368	340	130	173.5	100	6	3-M16	Ø14-Ø400	Ø100-Ø380	73	5002-029A
VSC-20A	500mm(20")	465	440	210	202	115	6	3-M16	Ø25-Ø500	Ø150-Ø500	131	5002-030A
VSC-25A	630mm(25")	595	560	260	194	130	6	3-M16	Ø50-Ø630	Ø170-Ø630	200	5002-031A



# 3 Jaw Powerful Self Centering Chuck

Reversible Top Jaws. Plain Back

Normal Type



Unit:mm

3 JAW SELF CENTERING CHUCK REVERSIBLE TOP JAWS. PLAIN BACK

## SPECIFICATIONS

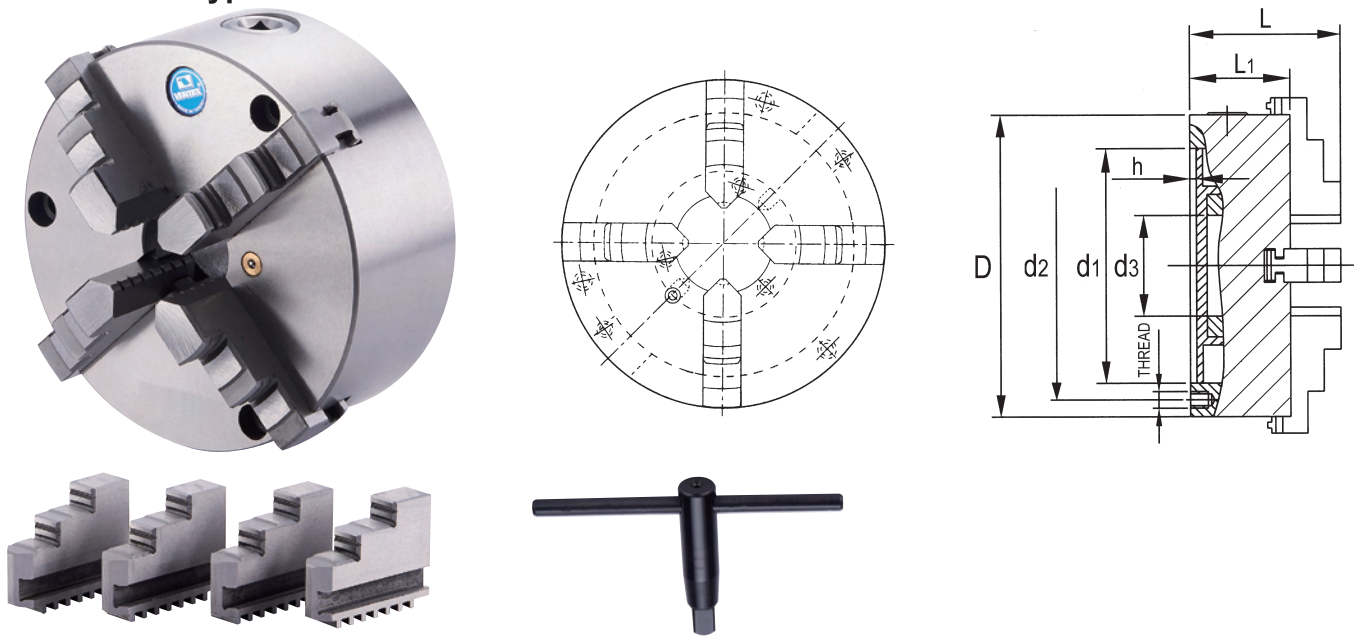
ORDER NO.	D-Size	d1	d2	d3	L	L1	h	THREAD	GRIPPING RANGE		WEIGHT (kgs)	CODE NO.
									O.D. RANGE	I.D. RANGE		
VSK-6A	160mm(6")	142	130	45	95	71	5	3-M8	Ø8-Ø160	Ø55-Ø150	8.3	5002-040A
VSK-8A	200mm(8")	180	165	65	109	78	5	3-M12	Ø8-Ø180	Ø62-Ø170	16	5002-042A
VSK-10A	250mm(10")	226	206	80	120	84	5	3-M12	Ø12-Ø260	Ø80-Ø250	21.7	5002-043A
VSK-12A	315mm(12")	285	260	100	156.5	102.5	6	3-M16	Ø15-Ø300	Ø90-Ø290	41	5002-043B
VSK-13A	325mm(13")	296	272	100	154.5	102.5	6	3-M16	Ø11.5-Ø350	Ø110-Ø340	45.8	5002-044A
VSK-15A	380mm(15")	350	325	130	156.5	104.5	6	3-M16	Ø11.5-Ø400	Ø110-Ø400	64.7	5002-045A
VSK-16A	400mm(16")	368	340	130	181.5	129.5	6	3-M16	Ø30-Ø470	Ø110-Ø380	75.5	5002-046A



# 4 Jaw Self Centering Chucks



Normal Type



## SPECIFICATIONS

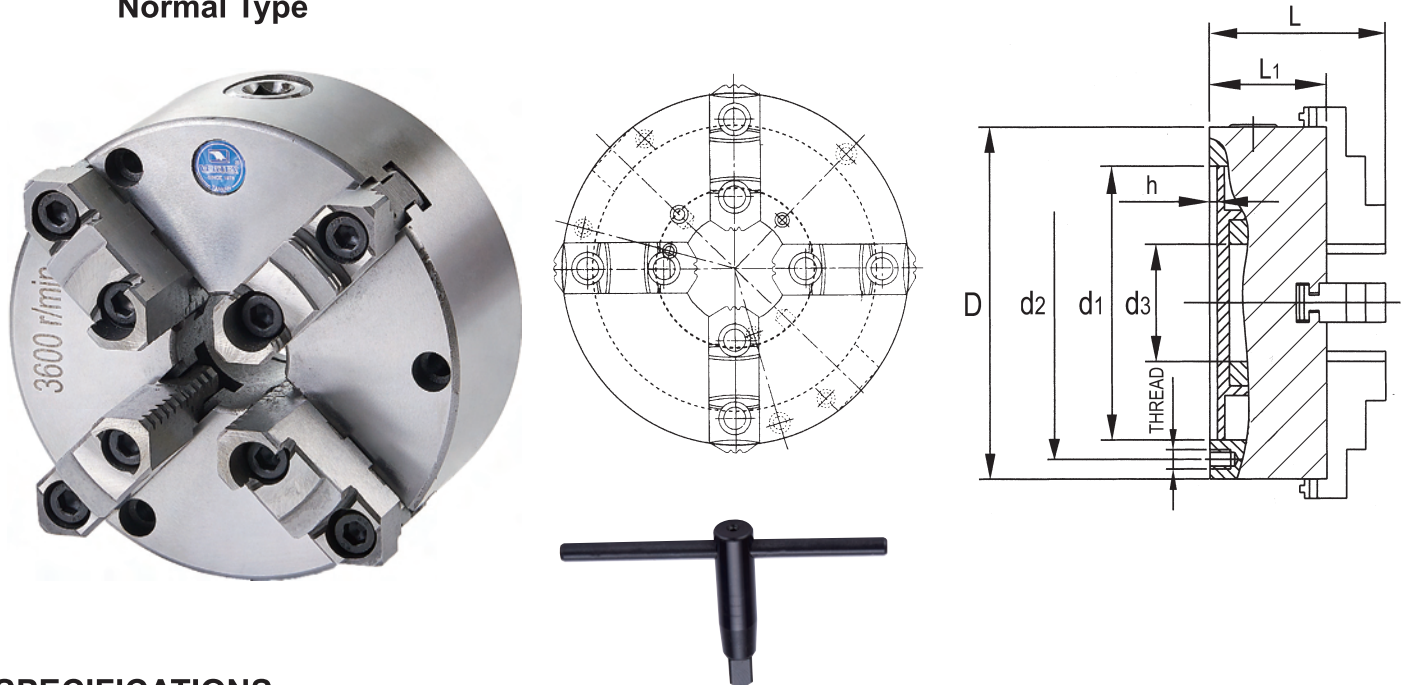
Unit:mm

ORDER NO.	D	d1	d2	d3	L	L1	h	THREAD	GRIPPING RANGE		WEIGHT (kgs)	CODE NO.
									O.D. RANGE	I.D. RANGE		
VPS-6A	165	130	145	45	94	65	5	3-M8	Ø4-Ø165	Ø55-Ø150	9.3	5002-050
VPS-8A	200	165	180	65	109	75	5	3-M10	Ø4-Ø200	Ø65-Ø200	16.6	5002-052
VPS-10A	250	206	226	80	120	80	5	3-M12	Ø6-Ø250	Ø90-Ø250	28	5002-053
VPS-12A	315	260	285	100	147.5	90	6	3-M16	Ø10-Ø315	Ø100-Ø315	54	5002-054



# 4-Jaw Powerful Self Centering Chucks

Normal Type



## SPECIFICATIONS

Unit:mm

ORDER NO.	D	d1	d2	d3	L	L1	h	THREAD	GRIPPING RANGE		WEIGHT (kgs)	CODE NO.
									O.D. RANGE	I.D. RANGE		
VPS-6AK	165	130	145	45	109	65	5	3-M8	Ø4-Ø165	Ø55-Ø150	9.5	5002-055
VPS-8AK	200	165	180	65	122	75	5	3-M10	Ø4-Ø200	Ø65-Ø200	14.8	5002-057
VPS-10AK	250	206	226	80	136	80	5	3-M12	Ø6-Ø250	Ø90-Ø250	24.7	5002-058
VPS-12AK	315	260	285	100	156.5	90	6	3-M16	Ø10-Ø315	Ø100-Ø315	45.7	5002-059

CENTERING CHUCK