

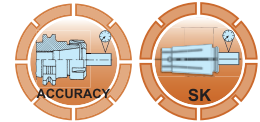
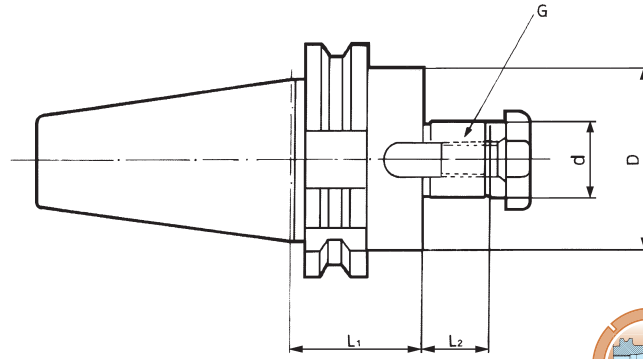


# Face Mill Holder



Holder For Face Mill Cutter.  
DIN69871 A

**DIN 69871A**



Unit:mm

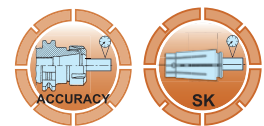
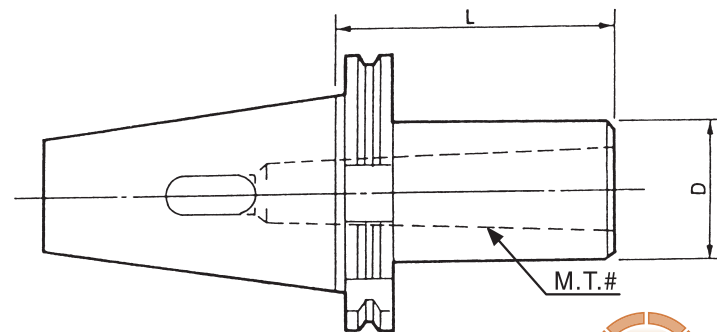
ORDER NO.	SIZE	d	D	L1	L2	G	WEIGHT(kg)	CODE NO.
SK-112	SK40-FMB22-50	22	48	50	18	M10	1.5	3211-202
SK-113	SK40-FMB27-50	27	60	50	20	M12	1.6	3211-203
SK-114	SK40-FMB32-50	32	62	50	22	M16	2.1	3211-204
SK-117	SK50-FMB22-50	22	60	50	18	M10	3.5	3211-205
SK-118	SK50-FMB27-50	27	70	50	20	M12	3.5	3211-206
SK-119	SK50-FMB32-60	32	75	60	22	M16	3.7	3211-207
SK-120	SK50-FMB40-60	40	85	60	26	M20	4.7	3211-208



# Morse Taper Holder-DIN 6383

Holder For Morse Taper Shank With Tang.  
DIN69871 A

**DIN 69871A**



Unit:mm

ORDER NO.	SIZE	M.T.#	L	D	WEIGHT(kg)	CODE NO.
SK-214	SK40-MT1-45	1	45	25	1	3211-133
SK-215	SK40-MT2-50	2	50	32	1	3211-134
SK-216	SK40-MT3-70	3	70	40	1.2	3211-135
SK-217	SK40-MT4-95	4	95	48	1.3	3211-136
SK-218	SK50-MT1-45	1	45	25	3	3211-137
SK-219	SK50-MT2-60	2	60	32	2.9	3211-138
SK-220	SK50-MT3-65	3	65	40	3	3211-139



# Sidelock End Mill Holder



DIN69871 A

WELDON TYPE

DIN 69871A

■ Dimensions:

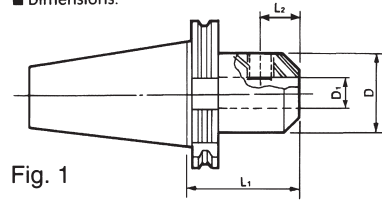


Fig. 1

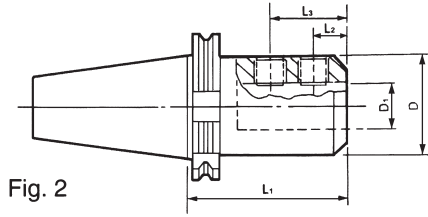
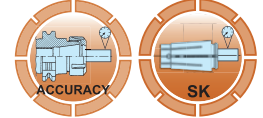


Fig. 2



Unit:mm



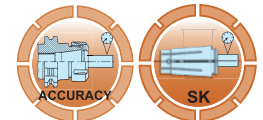
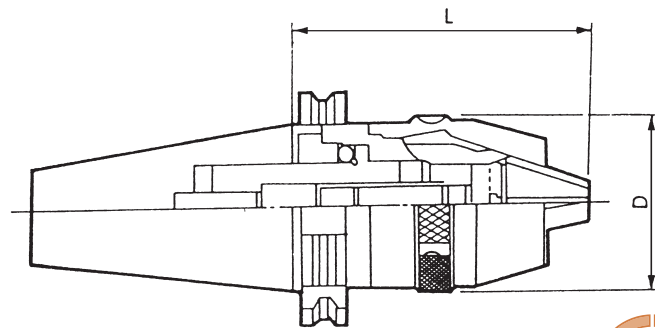
ORDER NO.	SIZE	Fig.	D1	D	L1	L2	L3	WEIGHT (kg)	CODE NO.
SK-417	SK40-EM6-50	1	6	25	50	18	-	1	3213-207
SK-418	SK40-EM8-50	1	8	28	50	18	-	1.1	3213-208
SK-419	SK40-EM10-50	1	10	35	50	20	-	1.1	3213-209
SK-420	SK40-EM12-50	1	12	42	50	22.5	-	1.2	3213-210
SK-421	SK40-EM16-63	1	16	48	63	24	-	1.5	3213-211
SK-422	SK40-EM20-63	1	20	52	63	25	-	1.4	3213-212
SK-423	SK40-EM25-100	2	25	65	100	24	49	2.4	3213-213
SK-427	SK50-EM10-63	1	10	35	63	20	-	3.4	3213-217
SK-428	SK50-EM12-63	1	12	42	63	22.5	-	3.4	3213-218
SK-429	SK50-EM16-63	1	16	48	63	24	-	3.5	3213-219
SK-430	SK50-EM20-63	1	20	52	63	25	-	3.5	3213-220
SK-431	SK50-EM25-80	2	25	65	80	24	49	3.8	3213-221

MILL HOLDER



# Drill Chuck Holder / APU

DIN 69871A



Unit:mm

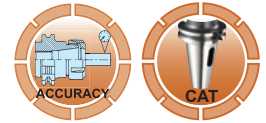
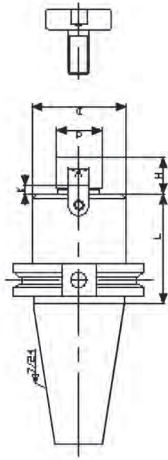


ORDER NO.	SIZE DIN 69871A	SAME SIZE	Clamping range (Ømm)	D	L		WEIGHT (kg)	CODE NO.
					Minimum	Maximum		
SK-511	SK40-APU08	INT-8-SK40	0.5-8	35.6	81	90	1.4	3301-001
SK-512	SK40-APU13	INT-13-SK40	1-13	52	99	111	1.9	3301-002
SK-514	SK50-APU13	INT-13-SK50	1-13	52	93	106	3.9	3301-004
SK-509	SK30-APU08	INT-8-SK30	0.5-8	35.6	80	88	0.7	3301-005
SK-510	SK30-APU13	INT-13-SK30	1-13	52	98	104	1.34	3301-006
SK-515	SK40-APU16	INT-16-SK40	3-16	56.8	127	140	2.4	3301-007
SK-516	SK50-APU16	INT-16-SK50	3-16	56.8	98	111	3.9	3301-008

# Face Mill Holder



CAT-FMA



ORDER NO.	L	Ød(h6)	ØD	H	K	W	CODE NO.
CAT40-FMA25.4-2.0"	2.0"	25.4	50	20	5	9.5	3213-230
CAT40-FMA31.75-2.25"	2.25"	31.75	60	22	7	12.7	3213-231
CAT40-FMA38.1-2.4"	2.4"	38.1	80	25	9	15.9	3213-232
CAT50-FMA25.4-2.0"	2.0"	25.4	50	20	5	9.5	3213-233
CAT50-FMA31.75-1.5"	1.5"	31.75	60	22	7	12.7	3213-234
CAT50-FMA38.1-2.4"	2.4"	38.1	80	25	9	15.9	3213-235
CAT50-FMA50.8-2.4"	2.4"	50.8	100	28	12	15.9	3213-236



# Side Lock Holders

CAT-SL

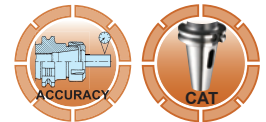
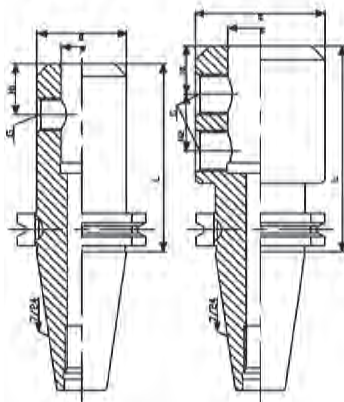


FIG 1

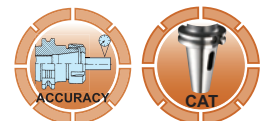
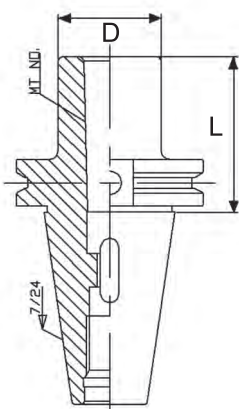
FIG 2



ORDER NO.	FIG	L	Ød	ØD	H1	H2	G	CODE NO.
CAT40-SL08-2.50"	1	2.5"	8	28	18	-	M8	3213-240
CAT40-SL10-2.50"			10	35	20		M10	3213-241
CAT40-SL12-2.62"		2.62"	12	42	22.5		M12	3213-242
CAT40-SL16-2.75"		2.75"	16	48	24		M14	3213-243
CAT40-SL20-3.50"		3.5"	20	48	25		M16	3213-244
CAT40-SL25-4.00"	2	4.0"	25	62	24	25	M18	3213-245
CAT40-SL32-4.00"			32	72		28	M20	3213-246
CAT50-SL08-2.50"	1	2.5"	8	28	18	-	M8	3213-247
CAT50-SL10-2.50"			10	35	20		M10	3213-248
CAT50-SL12-2.62"		2.62"	12	42	22.5		M12	3213-249
CAT50-SL16-2.75"		2.75"	16	48	24		M14	3213-250
CAT50-SL20-3.50"		3.5"	20	52	25		M16	3213-251
CAT50-SL25-4.00"	2	4.0"	25	65	24	25	M18	3213-252
CAT50-SL32-4.00"			32	72		28	M20	3213-253
CAT50-SL40-4.70"			4.7"	40				90

# Morse Taper Holders

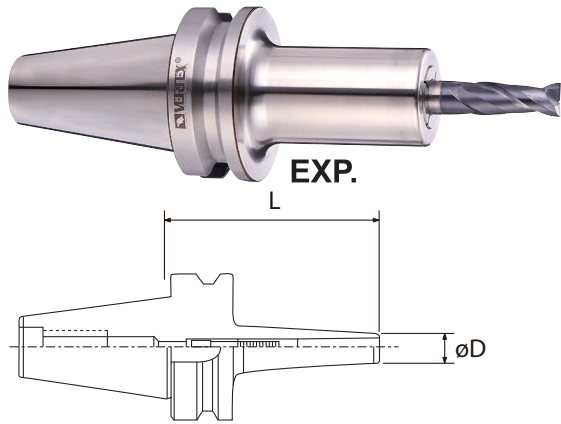
CAT-MTA



ORDER NO.	MT NO.	L	ØD	CODE NO.
CAT40-MTA2-60	2	60	32	3213-262
CAT40-MTA3-75	3	75	40	3213-263
CAT40-MTA4-90	4	90	50	3213-264
CAT50-MTA2-45	2	45	32	3213-265
CAT50-MTA3-45	3	45	40	3213-266
CAT50-MTA4-75	4	75	50	3213-267
CAT50-MTA5-105	5	105	65	3213-268



# DC High Speed Slim Chuck System



## DC Collet System

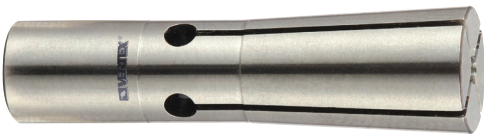
- Back pulling lock design.
- High clamping force.
- Rigid & high stability.
- For high precision cutting.
- Collets with different sizes can be used on all kind of end mills, reamers, drills and tapping.
- Runout: below 0.005mm.
- Smallest outer diameter.
- Max speed :30.000rpm;G2.5.



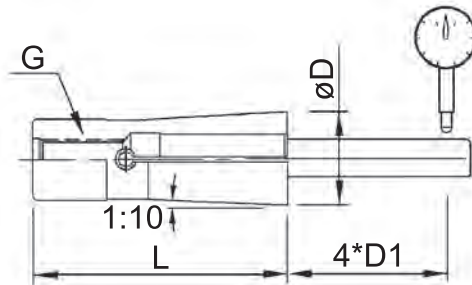
ORDER NO.	COLLET TYPE	L	ØD	CLAMPING RANGE	WRENCH	BACK SCREW	WEIGHT (kg)	CODE NO.
BT40-DC6-60	DC6	60	15	2~6	4mm	M5	1.1	3218-046
BT40-DC6-90	DC6	90	15	2~6			1.2	3218-047
BT40-DC8-90	DC8	90	22	3~8	5mm	M6	1.2	3218-100
BT40-DC8-120	DC8	120	22	3~8			1.4	3218-101
BT40-DC10-90	DC10	90	28	3~10	6mm	M8	1.3	3218-102
BT40-DC10-120	DC10	120	28	3~10			1.5	3218-103
BT40-DC12-90	DC12	90	35	3~12	8mm	M10	1.35	3218-104
BT40-DC12-120	DC12	120	35	3~12			1.6	3218-105



## Small Collet Of Slim Collet Chuck



- DC6 Series : For Clamping End Mills Drills, Reamers And Taps.
- Max. Clamping Diameter
- Runout : Below 0.005 mm



## DC Collet System

### Dimension

TYPE	ØD	L	G
DC6	9.5	36	M5*0.8P
DC8	15	45	M6*1.0P
DC10	19	52	M8-1.25P
DC12	22	60	M10*1.5P

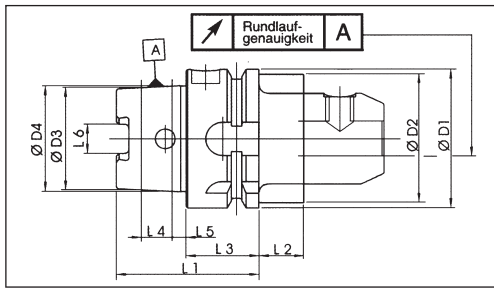
Precision DC Collet within 5 micron

ORDER NO.	øD	L	CLAMPING CAPACITY FOR END MILL DLA.	CLAMPING CAPACITY FOR DRILL REAMER. TAP	WEIGHT(kg)	CODE NO.
DC6-2	9.5	36	2	2.00-1.75	0.02	3218-056
DC6-2.5	9.5	36	2.5	2.50-2.25	0.02	3218-058
DC6-3	9.5	36	3	3.00-2.75	0.02	3218-065
DC6-3.5	9.5	36	3.5	3.50-3.25	0.02	3218-067
DC6-3.175	9.5	36	3.175	3.50-3.175	0.02	3218-068
DC6-4	9.5	36	4	4.00-3.75	0.02	3218-069
DC6-4.5	9.5	36	4.5	4.50-4.25	0.02	3218-071
DC6-5	9.5	36	5	5.00-4.75	0.02	3218-073
DC6-5.5	9.5	36	5.5	5.50-5.25	0.02	3218-075
DC6-6	9.5	36	6	6.00-5.75	0.02	3218-077
DC8-3	15	45	3	3.00-2.75	0.037	3218-120
DC8-3.175	15	45	3.175	3.175-2.92	0.037	3218-121
DC8-4	15	45	4	4.00-3.75	0.036	3218-122
DC8-5	15	45	5	5.00-4.75	0.035	3218-123
DC8-6	15	45	6	6.00-5.75	0.034	3218-124
DC8-7	15	45	8	8.00-7.75	0.03	3218-125
DC10-3	19	52	3	3.00-2.75	0.074	3218-140
DC10-4	19	52	4	4.00-3.75	0.074	3218-141
DC10-5	19	52	5	5.00-4.75	0.074	3218-142
DC10-6	19	52	6	6.00-5.75	0.072	3218-143
DC10-8	19	52	8	8.00-7.75	0.068	3218-144
DC10-10	19	52	10	10.00-9.75	0.062	3218-145
DC12-3	22	60	3	3.00-2.75	0.11	3218-160
DC12-4	22	60	4	4.00-3.75	0.11	3218-161
DC12-5	22	60	5	5.00-4.75	0.108	3218-162
DC12-6	22	60	6	6.00-5.75	0.108	3218-163
DC12-8	22	60	8	8.00-7.75	0.104	3218-164
DC12-10	22	60	10	10.00-9.75	0.096	3218-165
DC12-12	22	60	12	12.00-11.75	0.084	3218-166

DC SLIM CHUCK



# HSK-A63,A100(DIN-69893) Tool Holder



Form A

Compared to the steep taper the HSK has the following advantages

- High repetition accuracy when clamping tools into spindle
- Fix axial positioning by flat contact surface
- Suitable for high speed cutting
- No pull stud necessary

**Material**

- Special Cast-hardening steel for highly stressed parts
- Surface hardness 58-2 HRC

Tensile strength in core min.1000 N / mm<sup>2</sup> DIN 69893

SIZE	ØD1	ØD2	ØD3	ØD4	L1	L2	L3	L4	L5	L6
HSK 63	63	53	46.53	48	58	16	26	14.7	6.3	12.54

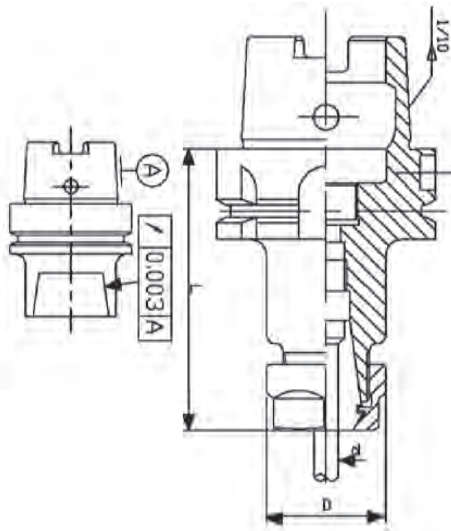


# HSK-A63,A100(DIN69893A) ER Collet Chucks

DIN69893 A

10000 R.P.M. G6.3

Caution: Excessive torque will damage the chuck, nut or collet.



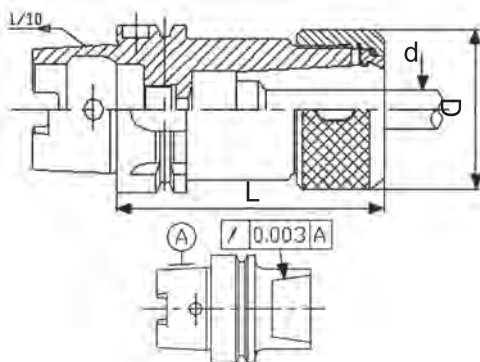
ORDER NO.	L	ØD	Ød RANGE	WEIGHT (kgs)	CODE NO.
HSK-A63-ER16-100	100	30	0.5-10	1.07	3217-100
HSK-A63-ER16-150	150	30	0.5-10	1.33	3217-101
HSK-A63-ER20-100	100	35	1.0-13	1.07	3217-102
HSK-A63-ER20-150	150	35	1.0-13	1.47	3217-103
HSK-A63-ER25-100	100	42	1.0-16	1.29	3217-104
HSK-A63-ER25-150	150	42	1.0-16	1.80	3217-105
HSK-A63-ER32-100	100	50	2.0-20	1.48	3217-106
HSK-A63-ER32-150	150	50	2.0-20	2.16	3217-107
HSK-A63-ER40-100	100	63	3.0-26	1.56	3217-108
HSK-A63-ER40-150	150	63	3.0-26	2.27	3217-109
HSK-A100-ER16-100	100	30	0.5-10	2.3	3217-110
HSK-A100-ER16-150	150	30	0.5-10	2.5	3217-111
HSK-A100-ER20-100	100	35	1.0-13	2.4	3217-112
HSK-A100-ER20-150	150	35	1.0-13	2.7	3217-113
HSK-A100-ER25-100	100	42	1.0-16	2.64	3217-114
HSK-A100-ER25-150	150	42	1.0-16	3.2	3217-115
HSK-A100-ER32-100	100	50	2.0-20	2.8	3217-116
HSK-A100-ER32-150	150	50	2.0-20	3.67	3217-117
HSK-A100-ER40-100	100	63	3.0-26	3.1	3217-118
HSK-A100-ER40-150	150	63	3.0-26	4.2	3217-119



# HSK-A63,A100(DIN69893A) OZ Collet Chucks

DIN69893 A

10000 R.P.M. G6.3



ORDER NO.	L	ØD	Ød RANGE	WEIGHT (kgs)	CODE NO.
HSK-A63-OZ25-100	100	60	2-25	1.6	3217-121
HSK-A63-OZ32-120	120	78	4-32	2.3	3217-122
HSK-A100-OZ25-100	100	60	2-25	2.9	3217-123
HSK-A100-OZ32-120	120	78	4-32	3.6	3217-124

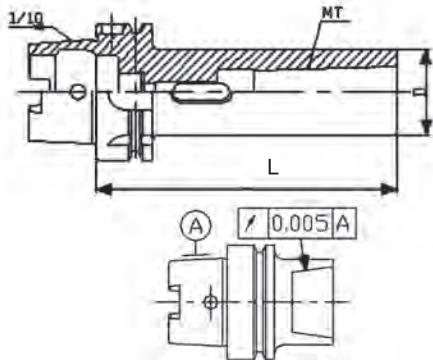


# HSK-A63,A100 Morse Taper Holders

DIN69892 A

DIN 69892A

10000 R.P.M. G6.3



ORDER NO.	MT NO.	L	ØD	kgs	CODE NO.
HSK-A63-MTA1-100	1	100	25	1	3217-130
HSK-A63-MTA2-120	2	120	35	1.3	3217-131
HSK-A63-MTA3-140	3	140	40	1.6	3217-132
HSK-A63-MTA4-160	4	160	50	2.2	3217-133
HSK-A100-MTA1-110	1	100	25	2.2	3217-134
HSK-A100-MTA2-120	2	120	35	2.5	3217-135
HSK-A100-MTA3-150	3	140	40	2.9	3217-136
HSK-A100-MTA4-170	4	160	50	3.5	3217-137
HSK-A100-MTA5-200	5	200	65	5.3	3217-138

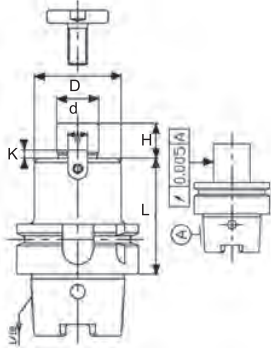


# HSK-A63,A100 Face Mill Holders



DIN69893 A

DIN 69893A



10000 R.P.M. G6.3

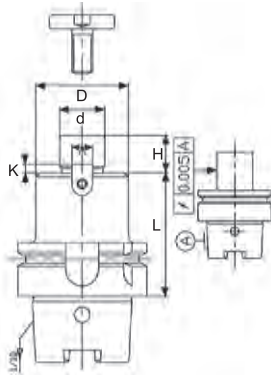
ORDER NO.	L	Ød(h6)	ØD	H	K	W	kgs	CODE NO.
HSK-A63-FMA25.4-60	60	25.4	50	20	5	9.5	1.4	3217-140
HSK-A63-FMA25.4-120	120						2.4	3217-141
HSK-A63-FMA31.75-60	60	31.75	60	22	7	12.7	1.6	3217-142
HSK-A63-FMA31.75-120	120						2.6	3217-143
HSK-A63-FMA38.1-60	60	38.1	80	25	9	15.9	2.0	3217-144
HSK-A63-FMA38.1-120	120						3.0	3217-145
HSK-A100-FMA25.4-60	60	25.4	50	20	5	9.5	2.7	3217-146
HSK-A100-FMA25.4-120	120						3.7	3217-147
HSK-A100-FMA31.75-60	60	31.75	60	22	7	12.7	2.9	3217-148
HSK-A100-FMA31.75-120	120						3.9	3217-149
HSK-A100-FMA38.1-60	60	38.1	80	25	9	15.9	3.3	3217-150
HSK-A100-FMA38.1-120	120						4.3	3217-151
HSK-A100-FMA50.8-60	60	50.8	100	28	12	15.9	4.1	3217-152
HSK-A100-FMA50.8-120	120						5.6	3217-153



# HSK-A63,A100 Face Mill Holders

DIN69893 A

DIN 69893A



10000 R.P.M. G6.3

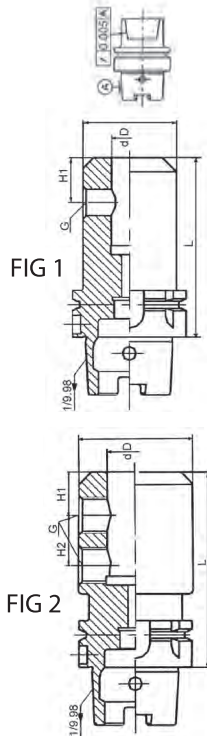
ORDER NO.	L	Ød(h6)	ØD	H	K	W	kgs	CODE NO.
HSK-A63-FMB22-50	50	22	48	18	5	10	1.1	3217-156
HSK-A63-FMB22-120	120						2.1	3217-157
HSK-A63-FMB27-60	60	27	60	20	6	12	1.5	3217-158
HSK-A63-FMB27-120	120						2.8	3217-159
HSK-A63-FMB32-60	60	32	72	22	7	14	1.8	3217-160
HSK-A63-FMB32-120	120						3.8	3217-161
HSK-A63-FMB40-60	60	40	80	25	8	16	2.1	3217-162
HSK-A63-FMB40-120	120						3.2	3217-163
HSK-A100-FMB22-50	50	22	48	18	5	10	2.5	3217-164
HSK-A100-FMB22-120	120						3.4	3217-165
HSK-A100-FMB27-60	60	27	60	20	6	12	2.9	3217-166
HSK-A100-FMB27-120	120						4.3	3217-167
HSK-A100-FMB32-60	60	32	72	22	7	14	3.4	3217-168
HSK-A100-FMB32-120	120						5.3	3217-169
HSK-A100-FMB40-60	60	40	80	25	8	16	3.6	3217-170
HSK-A100-FMB40-120	120						6.0	3217-171



# HSK-A63,A100 Sidelock End Mill Holder

DIN69893 A

DIN 69893A



ORDER NO.	L	Ød	ØD	H1	H2	G	FIG	WEIGHT kg	CODE NO.		
HSK-A63-SLA6-80	80	6	25	18	24	M6x0.75	1	0.8	3217-180		
HSK-A63-SLA8-80	80	8	28	18		M8x1.0		0.9	3217-181		
HSK-A63-SLA10-80	80	10	35	20		M10x1.0		1.0	3217-182		
HSK-A63-SLA12-90	90	12	42	22.5		M12x1.5		1.2	3217-183		
HSK-A63-SLA14-90	90	14	45	23		M14x1.5		1.3	3217-184		
HSK-A63-SLA16-100	100	16	48	24				1.5	3217-185		
HSK-A63-SLA18-100	100	18	50	24		M16x1.5		1.6	3217-186		
HSK-A63-SLA20-100	100	20	52	25				1.7	3217-187		
HSK-A63-SLA25-110	110	25	62	24		25		M18x2.0	2	2.2	3217-188
HSK-A63-SLA32-110	110	32	63	24		28				M20x2.0	2.1
HSK-A100-SLA10-80	80	10	35	20	24	M10x1.0	1	2.4	3217-190		
HSK-A100-SLA12-90	90	12	42	22.5		M12x1.5		2.6	3217-191		
HSK-A100-SLA16-100	100	16	48	24		M14x1.5		2.9	3217-192		
HSK-A100-SLA20-100	100	20	52	25		M16x1.5		3.0	3217-193		
HSK-A100-SLA25-110	110	25	64	24		M18x2.0		2	3.6	3217-194	
HSK-A100-SLA32-110	110	32	72	24					M20x2.0	4.1	3217-195
HSK-A100-SLA40-120	120	40	80	30		28		4.7		3217-196	



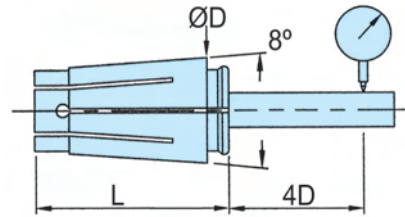
# SK Spring Collet System



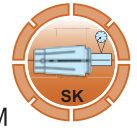
HRC:47° 10µm JIS STD. 15000 R.P.M.



**A GRADE**



SCM 440  
 THE RUNOUT OF A COLLET IS 10µ.  
 THE GRIPPING RANGE OF DIA. OVER 3MM IS 0.5MM  
 THE GRIPPING RANGE OF DIA. BELOW 3MM IS 0.25MM



TYPE	SK-6A				SK-10A				SK-13A			
WEIGHT (KGS)	0.005				0.02				0.048			
	ORDER NO.	ØD	CAP. mm Ø	CODE NO.	ORDER NO.	ØD	CAP. mm Ø	CODE NO.	ORDER NO.	ØD	CAP. mm Ø	CODE NO.
INDIVIDUAL UNIT	SK0601A	2	2-1.75	3218-400	SK1001A	2	2-1.75	3218-411	SK1301A	3	3-2.75	3218-700
	SK0602A	2.5	2.5-2.25	3218-401	SK1002A	2.5	2.5-2.25	3218-412	SK1302A	3.5	3.5-3	3218-701
	SK0603A	3	3-2.75	3218-402	SK1003A	3	3-2.75	3218-413	SK1303A	4	4-3.5	3218-702
	SK0604A	3.5	3.5-3	3218-403	SK1004A	3.175	3.175-2.7	3218-414	SK1304A	4.5	4.5-4	3218-703
	SK0605A	4	4-3.5	3218-404	SK1005A	3.5	3.5-3	3218-415	SK1305A	5	5-4.5	3218-704
	SK0606A	4.5	4.5-4	3218-405	SK1006A	4	4-3.5	3218-416	SK1306A	5.5	5.5-5	3218-705
	SK0607A	5	5-4.5	3218-406	SK1007A	4.5	4.5-4	3218-417	SK1307A	6	6-5.5	3218-706
	SK0608A	5.5	5.5-5	3218-407	SK1008A	5	5-4.5	3218-418	SK1308A	6.5	6.5-6	3218-707
	SK0609A	6	6-5.5	3218-408	SK1009A	5.5	5.5-5	3218-419	SK1309A	7	7-6.5	3218-708
					SK1010A	6	6-5.5	3218-420	SK13010A	7.5	7.5-7	3218-709
					SK1011A	6.5	6.5-6	3218-421	SK13011A	8	8-7.5	3218-710
					SK1012A	7	7-6.5	3218-422	SK13012A	8.5	8.5-8	3218-711
					SK1013A	7.5	7.5-7	3218-423	SK13013A	9	9-8.5	3218-712
					SK1014A	8	8-7.5	3218-424	SK13014A	9.5	9.5-9	3218-713
					SK1015A	8.5	8.5-8	3218-425	SK13015A	10	10-9.5	3218-714
					SK1016A	9	9-8.5	3218-426	SK13016A	10.5	10.5-10	3218-715
					SK1017A	9.5	9.5-9	3218-427	SK13017A	11	11-10.5	3218-716
					SK1018A	10	10-9.5	3218-428	SK13018A	11.5	11.5-11	3218-717
								SK13019A	12	12-11.5	3218-718	
								SK13020A	12.5	12.5-12	3218-719	
								SK13021A	13	13-12.5	3218-720	
	<b>TYPE</b>	<b>D</b>	<b>L</b>	<b>WEIGHT (kgs)</b>								
	SK6	10.5	25	0.005								
	SK10	15.5	30.5	0.02								
	SK13	20	39	0.048								
	SK16	24.5	45	0.08								
	SK20	28.5	54	0.135								
	SK25	35.5	57	0.205								



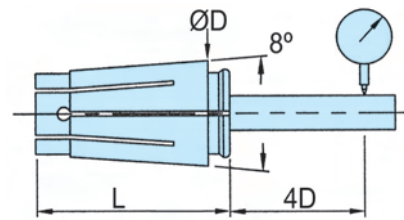
# SK Spring Collet System



HRC:47° 10µm JIS STD. 15000 R.P.M.



**A GRADE**



SCM 440

THE RUNOUT OF A COLLET IS 10µ.

THE GRIPPING RANGE OF DIA. OVER 3MM IS 0.5MM

THE GRIPPING RANGE OF DIA. BELOW 3MM IS 0.25MM

TYPE	SK-16A				SK-20A				SK-25A			
WEIGHT (KGS)	0.08				0.135				0.205			
	ORDER NO.	ØD	CAP. mm Ø	CODE NO.	ORDER NO.	ØD	CAP. mm Ø	CODE NO.	ORDER NO.	ØD	CAP. mm Ø	CODE NO.
INDIVIDUAL UNIT	SK1601A	3	3-2.75	3218-430	SK2001A	3	3-2.75	3218-460	SK2501A	6	6-5.5	3218-470
	SK1602A	3.175	3.175-2.7	3218-431	SK2002A	4	4-3.5	3218-461	SK2502A	8	8-7.5	3218-471
	SK1603A	3.5	3.5-3	3218-432	SK2003A	6	6-5.5	3218-462	SK2503A	10	10-9.5	3218-472
	SK1604A	4	4-3.5	3218-433	SK2004A	8	8-7.5	3218-463	SK2504A	12	12-11.5	3218-473
	SK1605A	4.5	4.5-4	3218-434	SK2005A	10	10-9.5	3218-464	SK2505A	14	14-13.5	3218-474
	SK1606A	5	5-4.5	3218-435	SK2006A	12	12-11.5	3218-465	SK2506A	16	16-15.5	3218-475
	SK1607A	5.5	5.5-5	3218-436	SK2007A	16	16-15.5	3218-466	SK2507A	18	18-17.5	3218-476
	SK1608A	6	6-5.5	3218-437	SK2008A	20	20-19.5	3218-467	SK2508A	20	20-19.5	3218-477
	SK1609A	6.5	6.5-6	3218-438					SK2509A	22	22-21.5	3218-478
	SK1610A	7	7-6.5	3218-439					SK2510A	24	24-23.5	3218-479
	SK1611A	7.5	7.5-7	3218-440					SK2511A	25	25-24.5	3218-480
	SK1612A	8	8-7.5	3218-441					SK2512A	25.4	25.4-25	3218-481
	SK1613A	8.5	8.5-8	3218-442								
	SK1614A	9	9-8.5	3218-443								
	SK1615A	9.5	9.5-9	3218-444								
	SK1616A	10	10-9.5	3218-445								
	SK1617A	10.5	10.5-10	3218-446								
	SK1618A	11	11-10.5	3218-447								
	SK1619A	11.5	11.5-11	3218-448								
	SK1620A	12	12-11.5	3218-449								
	SK1621A	12.5	12.5-12	3218-450								
	SK1622A	13	13-12.5	3218-451								
	SK1623A	13.5	13.5-13	3218-452								
	SK1624A	14	14-13.5	3218-453								
	SK1625A	14.5	14.5-14	3218-454								
	SK1626A	15	15-14.5	3218-455								
	SK1627A	15.5	15.5-15	3218-456								
	SK1628A	16	16-15.5	3218-457								

SK COLLET





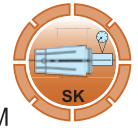
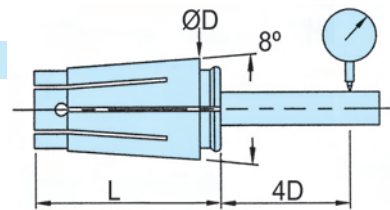
# SK Spring Collet System



HRC:47° 5µm JIS STD. 15000 R.P.M.



**AA GRADE**



SCM 440  
 THE RUNOUT OF AA COLLET IS 5µ.  
 THE GRIPPING RANGE OF DIA. OVER 3MM IS 0.5MM  
 THE GRIPPING RANGE OF DIA. BELOW 3MM IS 0.25MM

TYPE	SK-6AA				SK-10AA				SK-13AA			
WEIGHT (KGS)	0.005				0.02				0.048			
	ORDER NO.	ØD	CAP. mm Ø	CODE NO.	ORDER NO.	ØD	CAP. mm Ø	CODE NO.	ORDER NO.	ØD	CAP. mm Ø	CODE NO.
INDIVIDUAL UNIT	SK0601AA	2	2-1.75	3218-500	SK1001AA	2	2-1.75	3218-511	SK1301AA	3	3-2.75	3218-730
	SK0602AA	2.5	2.5-2.25	3218-501	SK1002AA	2.5	2.5-2.25	3218-512	SK1302AA	3.5	3.5-3	3218-731
	SK0603AA	3	3-2.75	3218-502	SK1003AA	3	3-2.75	3218-513	SK1303AA	4	4-3.5	3218-732
	SK0604AA	3.5	3.5-3	3218-503	SK1004AA	3.175	3.175-2.7	3218-514	SK1304AA	4.5	4.5-4	3218-733
	SK0605AA	4	4-3.5	3218-504	SK1005AA	3.5	3.5-3	3218-515	SK1305AA	5	5-4.5	3218-734
	SK0606AA	4.5	4.5-4	3218-505	SK1006AA	4	4-3.5	3218-516	SK1306AA	5.5	5.5-5	3218-735
	SK0607AA	5	5-4.5	3218-506	SK1007AA	4.5	4.5-4	3218-517	SK1307AA	6	6-5.5	3218-736
	SK0608AA	5.5	5.5-5	3218-507	SK1008AA	5	5-4.5	3218-518	SK1308AA	6.5	6.5-6	3218-737
	SK0609AA	6	6-5.5	3218-508	SK1009AA	5.5	5.5-5	3218-519	SK1309AA	7	7-6.5	3218-738
					SK1010AA	6	6-5.5	3218-520	SK13010AA	7.5	7.5-7	3218-739
					SK1011AA	6.5	6.5-6	3218-521	SK13011AA	8	8-7.5	3218-740
					SK1012AA	7	7-6.5	3218-522	SK13012AA	8.5	8.5-8	3218-741
					SK1013AA	7.5	7.5-7	3218-523	SK13013AA	9	9-8.5	3218-742
					SK1014AA	8	8-7.5	3218-524	SK13014AA	9.5	9.5-9	3218-743
					SK1015AA	8.5	8.5-8	3218-525	SK13015AA	10	10-9.5	3218-744
					SK1016AA	9	9-8.5	3218-526	SK13016AA	10.5	10.5-10	3218-745
					SK1017AA	9.5	9.5-9	3218-527	SK13017AA	11	11-10.5	3218-746
					SK1018AA	10	10-9.5	3218-528	SK13018AA	11.5	11.5-11	3218-747
									SK13019AA	12	12-11.5	3218-748
									SK13020AA	12.5	12.5-12	3218-749
								SK13021AA	13	13-12.5	3218-750	



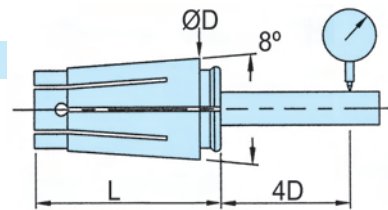
# SK Spring Collet System



HRC:47° 5µm JIS STD. 15000 R.P.M.



**AA GRADE**



SCM 440

THE RUNOUT OF AA COLLET IS 5µ.

THE GRIPPING RANGE OF DIA. OVER 3MM IS 0.5MM

THE GRIPPING RANGE OF DIA. BELOW 3MM IS 0.25MM

TYPE	SK-16AA				SK-20AA				SK-25AA			
WEIGHT (KGS)	0.08				0.135				0.205			
	ORDER NO.	ØD	CAP. mm Ø	CODE NO.	ORDER NO.	ØD	CAP. mm Ø	CODE NO.	ORDER NO.	ØD	CAP. mm Ø	CODE NO.
INDIVIDUAL UNIT	SK1601AA	3	3-2.75	3218-530	SK2001AA	3	3-2.75	3218-560	SK2501AA	6	6-5.5	3218-570
	SK1602AA	3.175	3.175-2.7	3218-531	SK2002AA	4	4-3.5	3218-561	SK2502AA	8	8-7.5	3218-571
	SK1603AA	3.5	3.5-3	3218-532	SK2003AA	6	6-5.5	3218-562	SK2503AA	10	10-9.5	3218-572
	SK1604AA	4	4-3.5	3218-533	SK2004AA	8	8-7.5	3218-563	SK2504AA	12	12-11.5	3218-573
	SK1605AA	4.5	4.5-4	3218-534	SK2005AA	10	10-9.5	3218-564	SK2505AA	14	14-13.5	3218-574
	SK1606AA	5	5-4.5	3218-535	SK2006AA	12	12-11.5	3218-565	SK2506AA	16	16-15.5	3218-575
	SK1607AA	5.5	5.5-5	3218-536	SK2007AA	16	16-15.5	3218-566	SK2507AA	18	18-17.5	3218-576
	SK1608AA	6	6-5.5	3218-537	SK2008AA	20	20-19.5	3218-567	SK2508AA	20	20-19.5	3218-577
	SK1609AA	6.5	6.5-6	3218-538					SK2509AA	22	22-21.5	3218-578
	SK1610AA	7	7-6.5	3218-539					SK2510AA	24	24-23.5	3218-579
	SK1611AA	7.5	7.5-7	3218-540					SK2511AA	25	25-24.5	3218-580
	SK1612AA	8	8-7.5	3218-541					SK2512AA	25.4	25.4-25	3218-581
	SK1613AA	8.5	8.5-8	3218-542								
	SK1614AA	9	9-8.5	3218-543								
	SK1615AA	9.5	9.5-9	3218-544								
	SK1616AA	10	10-9.5	3218-545								
	SK1617AA	10.5	10.5-10	3218-546								
	SK1618AA	11	11-10.5	3218-547								
	SK1619AA	11.5	11.5-11	3218-548								
	SK1620AA	12	12-11.5	3218-549								
	SK1621AA	12.5	12.5-12	3218-550								
	SK1622AA	13	13-12.5	3218-551								
	SK1623AA	13.5	13.5-13	3218-552								
	SK1624AA	14	14-13.5	3218-553								
	SK1625AA	14.5	14.5-14	3218-554								
	SK1626AA	15	15-14.5	3218-555								
	SK1627AA	15.5	15.5-15	3218-556								
	SK1628AA	16	16-15.5	3218-557								

SK COLLET