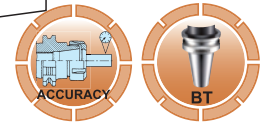
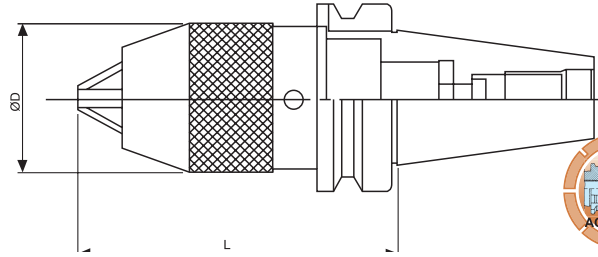




# Drill Chuck Holder / APU



Details on page C75, C76



ORDER NO.	TAPER	ØD	KGS	CODE NO.
BT-180	BT30-APU08	37	1	3212-301
BT-181	BT30-APU13	50	1.4	3212-302
BT-182	BT40-APU08	37	1.5	3212-303
BT-183	BT40-APU13	50	2	3212-304
BT-184	BT40-APU16	58	2.5	3212-305
BT-186	BT50-APU13	50	4.7	3212-307
BT-188	BT50-APU16	58	4.8	3212-309



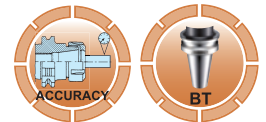
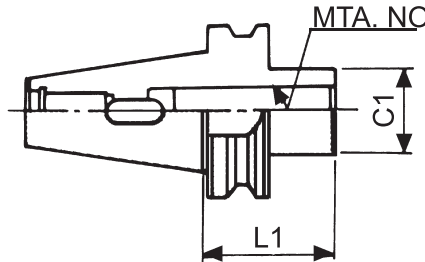
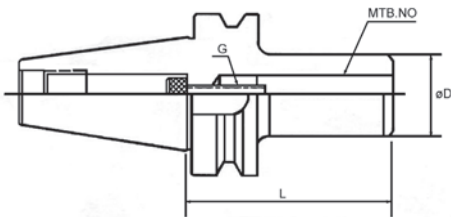
## Morse Taper Adaptor

BT30,40,50-MTA,MTB

MAS 403 BT-SHANK

Pull Stud For MTB Adaptor

Pull Stud For MTA Adaptor



Morse Taper Adaptor

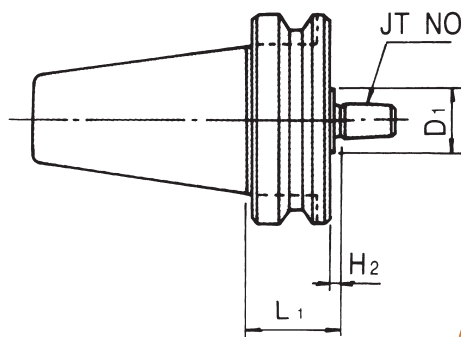


### MTA TYPE (STANDARD TYPE)

ORDER NO.	TAPER	MT.NO.	L1	C1	WEIGHT(KG)	CODE NO.
BT-204	BT30	MT-2	60	32	0.6	3211-091
BT-207		MT-3	80	40	1.2	3211-092
BT-209		MT-1	50	25	1.1	3211-094
BT-212	BT40	MT-2	50	32	1.1	3211-095
BT-213		MT-2	120	32	1.4	3211-095A
BT-215		MT-3	75	40	1.3	3211-096
BT-216		MT-3	135	40	1.7	3211-096A
BT-218		MT-4	95	48	1.5	3211-097
BT-219		MT-4	165	48	2.3	3211-097A
BT-220		BT50	MT-1	45	25	3.5
BT-223	MT-2		50	32	3.5	3211-099
BT-224	MT-2		135	32	4	3211-099A
BT-226	MT-3		65	40	3.6	3211-100
BT-227	MT-3		150	40	4.4	3211-100A
BT-229	MT-4		75	48	3.6	3211-101
BT-230	MT-4		180	48	4.9	3211-101A
BT-231	MT-5		105	65	4.2	3211-102

### MTB TYPE (STANDARD TYPE)

ORDER NO.	TAPER	MT.NO.	L	ØD	G	WEIGHT(KG)	CODE NO.
BT-236	BT40	MTB1	45	25	M16	1	3211-105
BT-237		MTB2	45	32	M10	1	3211-106
BT-238		MTB3	75	40	M12	1.2	3211-107
BT-239		MTB4	75	48	M16	1.3	3211-108
BT-241	BT50	MTB2	45	32	M10	3.6	3211-110
BT-242		MTB3	60	40	M12	3.7	3211-111
BT-243		MTB4	75	48	M16	3.7	3211-112
BT-244		MTB5	120	65	M20	5.2	3211-113



ORDER NO.	TAPER	JT.NO.	L1	D1	H2	WEIGHT (KG)	CODE NO.
BT-315	BT40	JT-6	45	30	4	1.2	3209-147
BT-316		JT-6	90	30	4	1.4	3209-148
BT-325	BT50	JT-6	45	30	4	4.2	3209-151
BT-332	BT40	B16*	45	30	4	1.45	3209-155
BT-332-1		B18*	45				3209-155A
BT-333	BT50	B16*	45	30	4	5.1	3209-156
BT-333-1		B18*	45				3209-156A

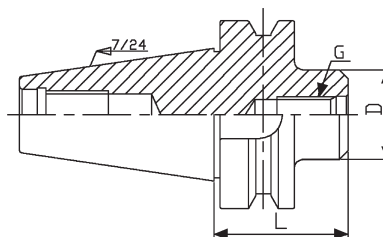
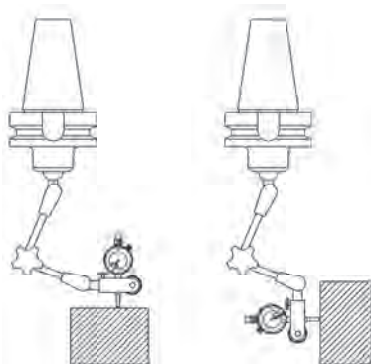
JACOBS TAPER ARBOR



## Lever Checking Holders



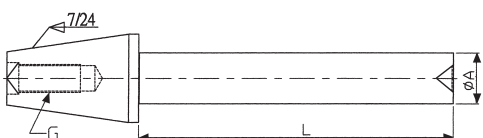
M8 THREAD FOR CHECKING ARM



ORDER NO.	L	ØD	G	kgs	CODE NO.
BT40-M8	47	30	M8	1.3	3029-160
BT50-M8	58	30	M8		3029-161



## Test Arbor



ORDER NO.	TAPER	G CAN FOR PULL STUD	A	L	KGS	CODE NO.
A50	BT-50	M24xP3.0	40	250	5.3	3405-412
A40	BT-40	M16xP2.0	40		3.9	3405-413
A30	BT-30	M12xP1.75	30		2.4	3405-414



# Sidelock End Mill Holder

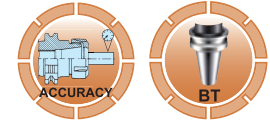
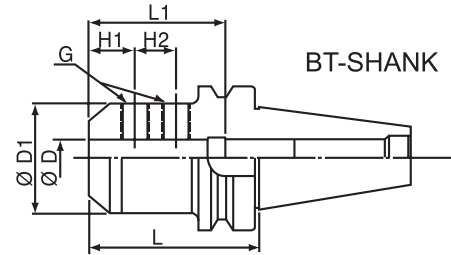
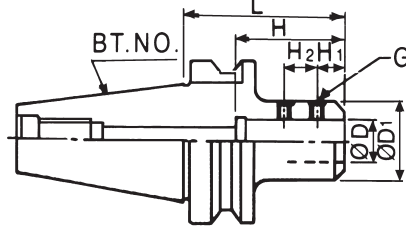


BT 30, 40, 50-SLA

MAS 403



WELDON TYPE



Unit:mm

ORDER NO.	SIZE	ØD	ØD1	L	L1	H1	H2	G	WEIGHT (kgs)	CODE NO.
BT-436	BT30-SLA6-60	6	25	60	30	12	10	M6x1.0	0.7	3213-126
BT-437	BT30-SLA8-60	8	28	60	35	14	12	M8x1.25	0.7	3213-127
BT-438	BT30-SLA10-60	10	35	60	40	15	14	M8x1.25	0.7	3213-128
BT-439	BT30-SLA12-60	12	42	60	50	20	16	M12x1.5	0.8	3213-129
BT-440	BT30-SLA16-75	16	48	75	60	20	18	M12x1.5	0.9	3213-130
BT-441	BT30-SLA20-75	20	52	75	70	23	19	M12x1.5	1.2	3213-131
BT-442	BT40-SLA6-75	6	25	75	30	12	10	M6x1.0	1.2	3213-132
BT-443	BT40-SLA8-75	8	28	75	35	14	12	M8x1.25	1.3	3213-133
BT-444	BT40-SLA10-75	10	35	75	40	15	14	M8x1.25	1.4	3213-134
BT-445	BT40-SLA12-75	12	42	75	50	20	16	M12x1.5	1.5	3213-135
BT-446	BT40-SLA14-75	14	44	75	50	20	16	M12x1.5	1.5	3213-136
BT-447	BT40-SLA16-75	16	48	75	60	20	18	M12x1.5	1.6	3213-137
BT-448	BT40-SLA18-75	18	50	75	60	20	18	M12x1.5	1.6	3213-138
BT-449	BT40-SLA20-90	20	52	90	70	23	19	M12x1.5	1.9	3213-139
BT-450	BT40-SLA25-90	25	62	90	80	24	25	M18x1.5	2.2	3213-140
BT-451	BT40-SLA32-90	32	63	90	80	24	28	M20x1.5	2	3213-141
BT-451-1	BT40-SLA32-100	32						M20x1.5		3213-141A
BT-452	BT40-SLA40-105	40	79	105	80	24	28	M20x1.5	3.2	3213-142
BT-453	BT40-SLA42-105	42	79	105	80	24	28	M20x1.5	3.1	3213-143
BT-454	BT50-SLA6-90	6	25	90	30	12	10	M6x1.0	3.9	3213-144
BT-455	BT50-SLA6-150	6	25	150	30	12	10	M6x1.0	4	3213-145
BT-456	BT50-SLA8-90	8	28	90	35	14	12	M8x1.25	3.7	3213-146
BT-457	BT50-SLA8-150	8	28	150	35	14	12	M8x1.25	4.2	3213-147
BT-458	BT50-SLA10-90	10	35	90	40	15	14	M8x1.25	4.2	3213-148
BT-459	BT50-SLA10-150	10	35	150	40	15	14	M8x1.25	4.3	3213-149
BT-460	BT50-SLA12-90	12	42	90	50	20	16	M12x1.5	4.2	3213-150
BT-461	BT50-SLA12-150	12	42	150	50	20	16	M12x1.5	4.9	3213-151
BT-462	BT50-SLA14-90	14	44	90	55	20	16	M12x1.5	4.2	3213-152
BT-463	BT50-SLA16-90	16	48	90	60	20	18	M12x1.5	4.3	3213-153
BT-464	BT50-SLA16-150	16	48	150	60	20	18	M12x1.5	5	3213-154
BT-465	BT50-SLA18-90	18	50	90	60	20	18	M12x1.5	4.3	3213-155
BT-466	BT50-SLA20-105	20	52	105	70	23	19	M12x1.5P	4.5	3213-156
BT-467	BT50-SLA20-150	20	52	150	70	23	19	M12x1.5	4.5	3213-157
BT-468	BT50-SLA20-200	20	52	200	70	23	19	M12x1.5	6.4	3213-158
BT-470	BT50-SLA25-105	25	65	105	80	24	25	M18x1.5	5	3213-160
BT-471	BT50-SLA25-150	25	65	150	80	24	25	M18x1.5P	6.3	3213-161
BT-472	BT50-SLA25-200	25	65	200	80	24	25	M18x1.5P	7.6	3213-162
BT-474	BT50-SLA32-105	32	72	105	80	24	28	M20x1.5	5.3	3213-164
BT-477	BT50-SLA32-250	32	72	250	80	24	28	M20x1.5	9.8	3213-167
BT-478	BT50-SLA40-120	40	90	120	90	30	32	M20x1.5	6.5	3213-168
BT-479	BT50-SLA42-120	42	90	120	90	30	32	M20x1.5	6.7	3213-169



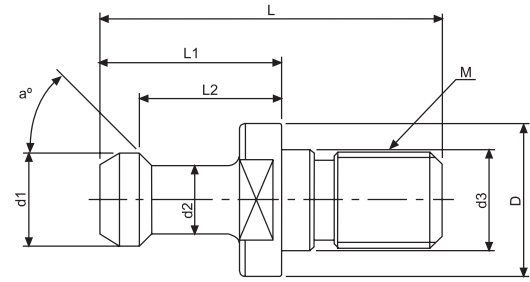


# Pull Studs

BT 30, 40, 50



FOR MAS 403



THREAD GROUND

- MATERIAL: SNCM 21
- HARDNESS: HRC 54 $\pm$ 2 $^{\circ}$
- SHANK BT-30(P 30T)/P30T-1-MAS/P30T-2-MAS
- SHANK BT-40(P 40T)
- SHANK BT-50(P 50T)
- P30T-1-MAS
- P30T-2-MAS

Unit:mm

ORDER NO.	TAPER NO.	a $^{\circ}$	L	L1	L2	D	d1	d2	d3	M	NOTE	CODE NO.
BT-510	BT30X90 $^{\circ}$	90	43	23	18	16.5	11	7	12.5	M12	P30T-3(90 $^{\circ}$ )	3215-007
BT-501	BT30X45 $^{\circ}$	45	43	23	18	16.5	11	7	12.5	M12	P30T-1(45 $^{\circ}$ )	3215-008
BT-502	BT30X60 $^{\circ}$	60	43	23	18	16.5	11	7	12.5	M12	P30T-2(60 $^{\circ}$ )	3215-009
BT-511	BT40X90 $^{\circ}$	90	60	35	28	23	15	10	17	M16	P40T-3(90 $^{\circ}$ )	3215-010
BT-503	BT40X45 $^{\circ}$	45	60	35	28	23	15	10	17	M16	P40T-1(45 $^{\circ}$ )	3215-011
BT-504	BT40X60 $^{\circ}$	60	60	35	28	23	15	10	17	M16	P40T-2(60 $^{\circ}$ )	3215-012
BT-512	BT50X90 $^{\circ}$	90	85	45	35	38	23	17	25	M24	P50T-3(90 $^{\circ}$ )	3215-013
BT-505	BT50X45 $^{\circ}$	45	85	45	35	38	23	17	25	M24	P50T-1(45 $^{\circ}$ )	3215-014
BT-506	BT50X60 $^{\circ}$	60	85	45	35	38	23	17	25	M24	P50T-2(60 $^{\circ}$ )	3215-015

PULL STUDS



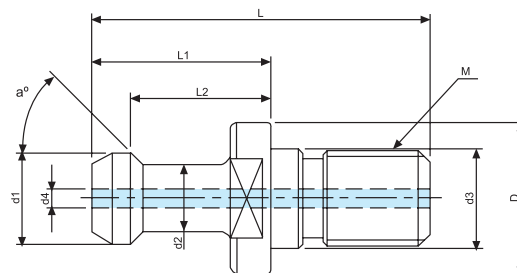
# Pull Studs

MAS 403  
BT-40,50

JIS B6339-1986

• With through hole for internal coolant

FOR MAS 403



Unit:mm

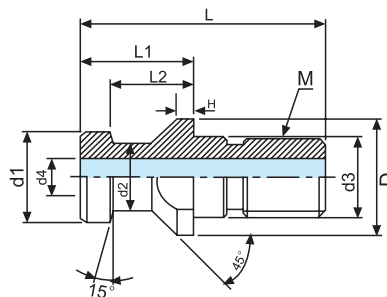
ORDER NO.	TAPER NO.	a $^{\circ}$	L	L1	L2	D	d1	d2	d3	d4	M	CODE NO.
BT-516	BT40X45 $^{\circ}$ W	45	60	35	28	23	15	10	17	4	M16	3215-060
BT-517	BT40X60 $^{\circ}$ W	60	60	35	28	23	15	10	17	4	M16	3215-061
BT-518	BT40X90 $^{\circ}$ W	90	60	35	28	23	15	10	17	4	M16	3215-062
BT-519	BT50X45 $^{\circ}$ W	45	85	45	35	38	23	17	25	7	M24	3215-063
BT-520	BT50X60 $^{\circ}$ W	60	85	45	35	38	23	17	25	7	M24	3215-064
BT-521	BT50X90 $^{\circ}$ W	90	85	45	35	38	23	17	25	7	M24	3215-065



# Pull Studs



FOR DIN 69872-1988

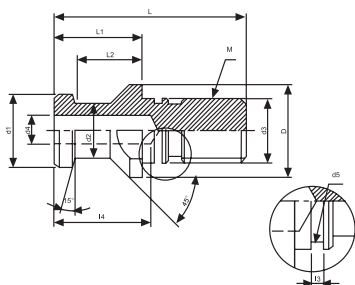


With Collant Hole

## DIN 69872, (WITH THROUGH HOLE)-A TYPE

Unit:mm

ORDER NO.	TAPER NO.	L	L1	L2	D	d1	d2	d3	d4	M	H	CODE NO.
BT-522	DIN30-A	44	24	19	17	13	9	13	3	M12		3215-066
BT-523	DIN40-A	54	26	20	23	19	14	17	7	M16	4	3215-067
BT-524	DIN40-A-L	54	29	23	23	19	14	17	7	M16		3215-068
BT-525	DIN50-A	74	34	25	36	28	21	25	11.5	M24		3215-069



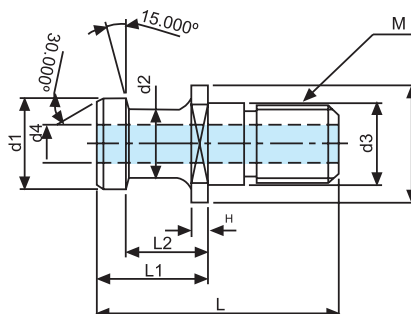
## WITHOUT O-RING DIN69872-B TYPE

Unit:mm

ORDER NO.	TAPER NO.	L	L1	L2	I3	I4	D	d1	d2	d3	d4	M	CODE NO.
BT-526	DIN30-B	44	24	19	1.4	/	17	13	9	13	/	M12	3215-070
BT-527	DIN40-B	54	26	20	1.9	27	23	19	14	17	7	M16	3215-071
BT-528	DIN50-B	74	34	25	3	37	36	28	21	25	11.5	M24	3215-072

ISO-A TYPE

FOR ISO/JIS 7388/2/A-1984A



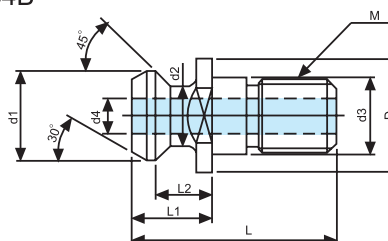
With Collant Hole

Unit:mm

ORDER NO.	TAPER NO.	L	L1	L2	D	d1	d2	d3	d4	M	H	CODE NO.
BT-529	ISO40-A	54	26	20	23	29	24	27	7	M16	3	3215-073
BT-530	ISO50-A	74	34	25	36	28	21	25	11.5	M24		3215-074

ISO-B TYPE

FOR ISO/JIS 7388/2/B-1984B

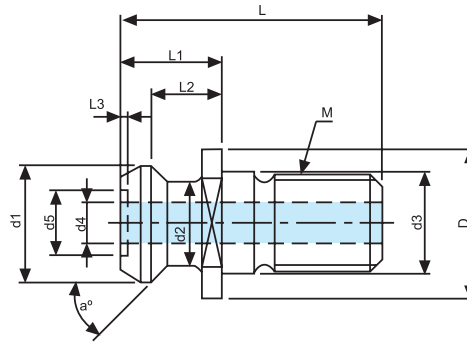


With Collant Hole

Unit:mm

ORDER NO.	TAPER NO.	L	L1	L2	D	d1	d2	d3	d4	M	CODE NO.
BT-531	ISO40-B	44.5	16.4	11.15	22.5	18.95	12.95	17	7.35	M16	3215-075
BT-532	ISO50-B	65.5	25.5	17.95	37	29.1	19.6	25	11.55	M24	3215-076

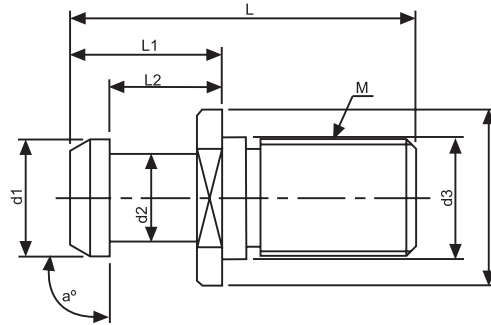
MAZAK FOR MAZAK MACHINE



Unit:mm

ORDER NO.	TAPER NO.	a°	L	L1	L2	L3	D	d1	d2	d3	d4	d5	M	CODE NO.
BT-533	MAZAK BT50	45	65.2	25.2	17.58	1.8	37	28.95	20.83	25	10	16	M24	3215-077
BT-534	MAZAK BT40	45	44.1	19.1	14	/	22	18.8	12.45	17	7	/	M16	3215-078
BT-535	MAZAK CAT40	45	44.1	16.1	11	/	22	18.8	12.45	17	7	/	M16	3215-079

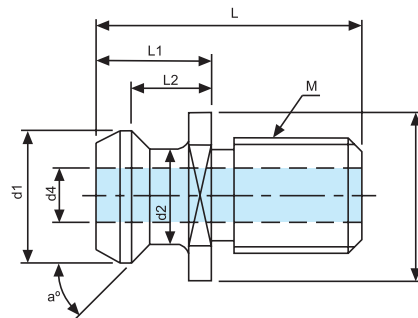
MITSUI FOR MITSUI MACHINE



Unit:mm

ORDER NO.	TAPER NO.	a°	L	L1	L2	D	d1	d2	d3	M	CODE NO.
BT-536	MITSUI BT40	90	50	25	18	23	15	10	17	M16	3215-080
BT-537	MITSUI BT50	90	71	31	23	36	24	18	25	M24	3215-081

CAT FOR ANSI B5-50



Unit:mm

ORDER NO.	TAPER NO.	a°	L	L1	L2	D	d1	d2	d4	M	CODE NO.
BT-538	CAT40	45	38.1	16.2	11.2	23.8	18.8	12.4	7.1	5/8"	3215-082
BT-539	CAT50	45	58.4	25.4	17.8	36	28.9	20.8	11.8	1"	3215-083

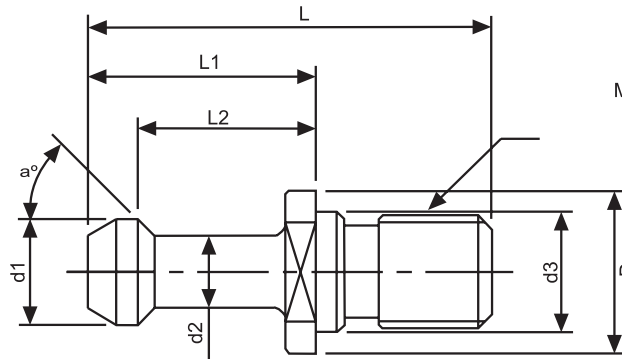
PULL STUDS



# Pull Studs



CAT-BT FOR BT MACHINE



Unit:mm

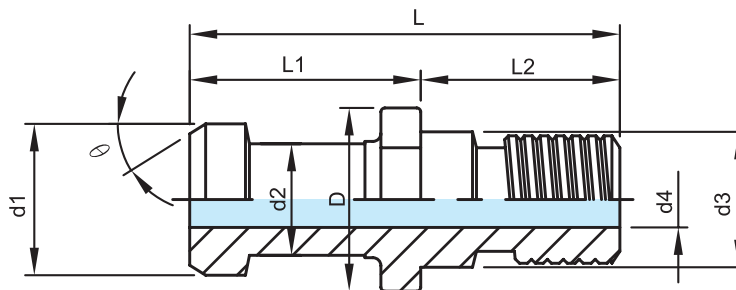
ORDER NO.	TAPER NO.	a°	L	L1	L2	D	d1	d2	d3	M	CODE NO.
BT-540	CAT40X45°	45	57	32	25	23	15	10		5/8"	3215-084
BT-541	CAT40X60°	60	57	32	25	23	15	10		5/8"	3215-085
BT-542	CAT40X90°	90	57	32	25	23	15	10		5/8"	3215-086
BT-543	CAT50X45°	45	78.6	45	35.2	38	23	17		1"	3215-087
BT-544	CAT50X60°	60	78.6	45	35.2	38	23	17		1"	3215-088
BT-545	CAT50X90°	90	78.6	45	35.2	38	23	17		1"	3215-089
BT-546	CAT40X45°M	45	57	32	25	23	15	10	17	M16	3215-090
BT-547	CAT40X60°M	60	57	32	25	23	15	10	17	M16	3215-091
BT-548	CAT40X90°M	90	57	32	25	23	15	10	17	M16	3215-092



# Pull Studs

FOR JIS 6339B-40P

With Collant Hole  
OKUNMA JIS #40



Unit:mm

ORDER NO.	TAPER NO.	a°	L	L1	L2	D	d1	d2	d3	d4	M	CODE NO.
BT-556	JIS	30	54	29	23	23	19	14	17	7	M16	3215-111

STEEL: SNCM-21



We recommend a complete set which is included tool holder, collet chuck, collet set, pull stud, tooling locking stand, edge finder for NC machining center. it is popular and suitable sale-mix in the market.



### ORDER NO. VBT-30-0720 CODE NO. 3216-001 BT-30 WITH 7PCS. HOLDER & ER-20 COLLET

ITEM NO.	Descriptions	Figures	Quantity	Explanation
1	ER20 COLLET CHUCK BT30-ER20-60		3pcs.	For small Dia. End mill and Drills
2	MORSE TAPER ADAPTOR BT30-MTA1-50		1pc.	For drills with Morse taper Shank No.1.
3	MORSE TAPER ADAPTOR BT30-MTA2-60		1pc.	For drills with Morse taper Shank No.2.
4	END MILL HOLDER BT-30-SL12-60		1pc.	For straight shank end mill with Sidelock edge Dia. 12mm(WELDON Type)
5	END MILL HOLDER BT30-SL16-75		1pc.	For straight shank end mill with Sidelock edge Dia. 16mm(WELDON Type)
6	ER20 SPRING COLLET ER20-dØ		11pcs.	For item 1. Including 11 collets as below: Ø3,4,5,6,7,8,9,10,11,12,13mm
7	PULL STUD BT-501, BT-502		7pcs.	BT-501 $\theta = 45^\circ$ BT-502 $\theta = 60^\circ$
8	TOOL HOLDER LOCKING STAND VTS-BT-30		1pc.	For locking the pull studs or preparing Cutting tools of tool holders.
9	ELECTRONIC EDGE FINDER VPS-20B		1pc.	For setting work coordinate on Machine Centers.

### ORDER NO. VBT-30-1520 CODE NO. 3216-011 BT-30 WITH 15PCS. HOLDER & ER-20 COLLET

ITEM NO.	Descriptions	Figures	Quantity	Explanation
1	ER20 COLLET CHUCK BT30-ER20-60		6pcs.	For small Dia. End mill and Drills
2	MORSE TAPER ADAPTOR BT30-MTA1-50		1pc.	For drills with Morse taper Shank No.1.
3	MORSE TAPER ADAPTOR BT30-MTA2-60		1pc.	For drills with Morse taper Shank No.2.
4	FACE MILL ARBOR BT30-FMB22-45		1pc.	For Holding the face milling Cutter Dia.50, 63mm
5	END MILL HOLDER BT-30-SL12-60		2pcs.	For straight shank end mill with Sidelock edge Dia. 12mm(WELDON Type)
6	END MILL HOLDER BT30-SL16-60		2pcs.	For straight shank end mill with Sidelock edge Dia. 16mm(WELDON Type)
7	END MILL HOLDER BT30-SL20-75		2pcs.	For straight shank end mill with Sidelock edge Dia. 20mm(WELDON Type)
8	ER20 SPRING COLLET ER20-dØ		11pcs.	For item 1. Including 11 collets as below: Ø3,4,5,6,7,8,9,10,11,12,13mm
9	PULL STUD BT-501, BT-502		15pcs.	BT-501 $\theta = 45^\circ$ BT-502 $\theta = 60^\circ$
10	TOOL HOLDER LOCKING STAND VTS-BT-30		1pc.	For locking the pull studs or preparing Cutting tools of tool holders.
11	ELECTRONIC EDGE FINDER VPS-20B		1pc.	For setting work coordinate on Machine Centers.





# Complete NC Tooling Set



We recommend a complete set which is included tool holder, collet chuck, collet set, pull stud, tooling locking stand, edge finder for NC machining center. it is popular and suitable sale-mix in the market.



G.W.:39.6 kgs

**ORDER NO. VBT-40-1532 CODE NO. 3216-002 BT-40 WITH 15PCS. HOLDER & ER-32 COLLET**

ITEM NO.	Descriptions	Figures	Quantity	Explanation
1	ER32 COLLET CHUCK V-703A BT40-ER32-70		3pcs.	For small Dia. End mill and Drills
2	ER32 COLLET CHUCK V-703B BT40-ER32-100		3pcs.	For small Dia. End mill and Drills
3	MORSE TAPER ADAPTOR BT-209 BT40-MTA1-50		1pc.	For drills with Morse taper Shank No.1.
4	MORSE TAPER ADAPTOR BT-212 BT40-MTA2-50		1pc.	For drills with Morse taper Shank No.2.
5	MORSE TAPER ADAPTOR BT-215 BT40-MTA3-75		1pc.	For drills with Morse taper Shank No.3.
6	FACE MILL ARBOR BT-152 BT40-FMB22-45		1pc.	For holding the face milling Cutter Dia.50, 63mm
7	FACE MILL ARBOR BT-154 BT40-FMB27-45		1pc.	For holding the face milling Cutter Dia.80mm
8	END MILL HOLDER BT-447 BT40-SLA16-75		1pc.	For straight shank end mill with Sidelock edge Dia. 16mm(WELDON Type)
9	END MILL HOLDER BT-449 BT40-SLA20-90		1pc.	For straight shank end mill with Sidelock edge Dia. 20mm(WELDON Type)
10	END MILL HOLDER BT-450 BT40-SLA25-90		1pc.	For straight shank end mill with Sidelock edge Dia. 25mm(WELDON Type)
11	END MILL HOLDER BT-451 BT40-SLA32-90		1pc.	For straight shank end mill with Sidelock edge Dia. 32mm(WELDON Type)
12	ER32 SPRING COLLET V-32008 ER32-dØ		11pcs./set	For item 1.2. Including 11 collets as below: Ø4,5,6,8,10,12,13,15,16,18,20mm
13	PULL STUD BT-503 OR BT-504		15pcs./set	BT-503 $\theta = 45^\circ$ BT-504 $\theta = 60^\circ$
14	TOOL HOLDER LOCKING STAND VTS-BT-40		1pc.	For locking the pull studs or preparing Cutting tools of tool holders.
15	ELECTRONIC EDGE FINDER VPS-20B		1pc.	For setting work coordinate on Machine Centers.





# Complete NC Tooling Set



We recommend a complete set which is included tool holder, collet chuck, collet set, pull stud, tooling locking stand, edge finder for NC machining center. it is popular and suitable sale-mix in the market.

**ORDER NO. VBT-40-2432 CODE NO. 3216-003 BT-40 WITH 23PCS. HOLDER & ER-32 COLLET**

ITEM NO.	Descriptions	Figures	Quantity	Explanation
1	ER32 COLLET CHUCK BT40-ER32-70		4pcs.	For small Dia. End mill and Drills
2	ER32 COLLET CHUCK BT40-ER32-100		4pcs.	For small Dia. End mill and Drills
3	MORSE TAPER ADAPTOR BT40-MTA1-50		1pc.	For drills with Morse taper Shank No.1.
4	MORSE TAPER ADAPTOR BT40-MTA2-50		2pc.	For drills with Morse taper Shank No.2.
5	MORSE TAPER ADAPTOR BT40-MTA3-75		2pc.	For drills with Morse taper Shank No.3.
6	FACE MILL ARBOR BT40-FMB22-45		1pc.	For holding the face milling Cutter Dia.50, 63mm
7	FACE MILL ARBOR BT40-FMB27-45		1pc.	For holding the face milling Cutter Dia.80mm
8	END MILL ARBOR BT40-SLA16-75		2pc.	For straight shank end mill with Sidelock edge Dia. 16mm(WELDON Type)
9	END MILL ARBOR BT40-SLA20-90		2pc.	For straight shank end mill with Sidelock edge Dia. 20mm(WELDON Type)
10	END MILL ARBOR BT40-SLA25-90		2pc.	For straight shank end mill with Sidelock edge Dia. 25mm(WELDON Type)
11	END MILL ARBOR BT40-SLA32-90		2pc.	For straight shank end mill with Sidelock edge Dia. 32mm(WELDON Type)
12	ER32 SPRING COLLET ER32-dØ		11pcs./set	For item 1.2. Including 11 collets as below: Ø4,5,6,8,10,12,13,15,16,18,20mm
13	PULL STUD BT-503 OR BT-504		23pcs./set	BT-503 $\theta = 45^\circ$ BT-504 $\theta = 60^\circ$
14	TOOL HOLDER LOCKING STAND VTS-BT-40		1pc.	For locking the pull studs or preparing Cutting tools of tool holders.
15	ELECTRONIC EDGE FINDER VPS-20B		1pc.	For setting work coordinate on Machine Centers.