



U2 Collet System



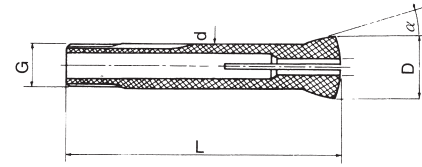
NO.1 U2 COLLET RANGE SIZE 3~16mm

NO.2 U2 COLLET RANGE SIZE 18~25mm

NO.1



NO.2



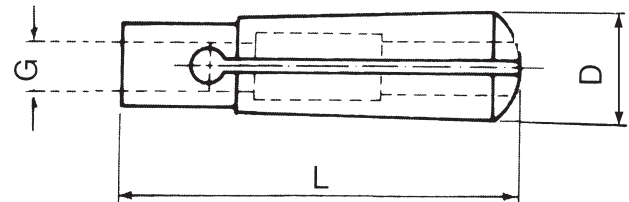
- L:120 ■ D:28 ■ d:20 ■ G:2.0P ■ Accuracy: ±0.02mm
- α:17°30' ■ WEIGHT:0.18KGS ■ Hardness: HRC47°

ORDER NO.	Q'TY	RANGE SIZE
VE-U2-□	1 PC	NO.1 Ø 1.5, 2, 3, 4, 5, 6, 7, 8, 9, 10, 11, 12, 13, 14, 15,16 NO.2 Ø 18, 20, 25MM
VE-U2-□	1 PC	Ø 1/8", 3/16", 1/4", 5/16", 3/8", 1/2", 5/8"

ORDER NO.	d	CODE NO.	ORDER NO.	d	CODE NO.	ORDER NO.	d	CODE NO.
VE-U2-1.5	1.5	3207-026	VE-U2-10	10	3207-008	VE-U2-1/8	1/8"	3207-018
VE-U2-2	2	3207-027	VE-U2-11	11	3207-009	VE-U2-3/16	3/16"	3207-019
VE-U2-3	3	3207-001	VE-U2-12	12	3207-010	VE-U2-1/4	1/4"	3207-020
VE-U2-4	4	3207-002	VE-U2-13	13	3207-011	VE-U2-5/16	5/16"	3207-021
VE-U2-5	5	3207-003	VE-U2-14	14	3207-012	VE-U2-3/8	3/8"	3207-022
VE-U2-6	6	3207-004	VE-U2-15	15	3207-013	VE-U2-1/2	1/2"	3207-023
VE-U2-7	7	3207-005	VE-U2-16	16	3207-014	VE-U2-5/8	5/8"	3207-024
VE-U2-8	8	3207-006	VE-U2-18	18	3207-015			
VE-U2-9	9	3207-007	VE-U2-20	20	3207-016			
			VE-U2-25	25	3207-017			



MT3 Collet System



- D:24.1 ■ L:87 ■ WEIGHT:0.18KGS
- DRAW BAR SIZE: G1.M12X1.75P

ORDER NO.	Q'TY	RANGE SIZE	DRAW BAR SIZE
MT3-□	1 PC	Ø 4, 6, 8, 10, 12, 16, 20MM	G1

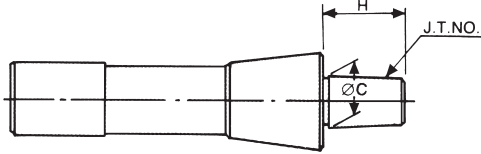
ORDER NO.	d	CODE NO.
MT3-4	4	3208-100
MT3-6	6	3208-101
MT3-8	8	3208-102
MT3-10	10	3208-103
MT3-12	12	3208-104
MT3-16	16	3208-105
MT3-20	20	3208-106



Drill Chucks Arbor

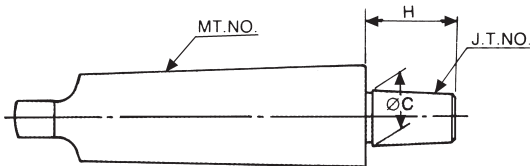


R8



ORDER NO.	TAPER	JT NO.	C	H	WEIGHT (kg)	CODE NO.
VJ-120	R8	JT3	20.60	34	0.5	3209-000
VJ-121		JT1	9.754	18	0.5	3209-001
VJ-122		JT2	13.94	20	0.5	3209-002
VJ-123		JT6	17.17	26	0.5	3209-003
VJ-124		B16	15.733	24	0.5	3209-004

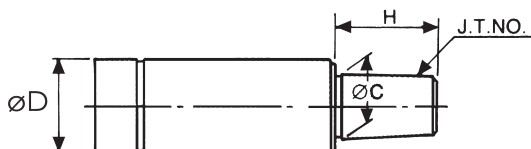
MT3.4.5



ORDER NO.	TAPER	JT NO.	C	H	WEIGHT (kg)	CODE NO.
VJ-126	MT2	JT3	20.6	34	0.24	3209-006
VJ-126-1		B16	15.733	29	0.2	3209-006A
VJ-126-3		B18	17.78	37	0.21	3209-006B
VJ-130		JT6	17.17	28	0.22	3209-029
VJ-130-2		JT5	35.89	50	0.5	3209-029A
VJ-130-4		JT4	28.55	45	0.4	3209-029B
VJ-137		JT2	14.2	25	0.2	3209-056
VJ-131	MT3	JT6	17.17	26	0.4	3209-030
VJ-131-2		JT5	35.89	50	0.7	3209-030A
VJ-131-4		JT33	15.85	28	0.3	3209-030B
VJ-134		B16	15.733	24	0.3	3209-033
VJ-134-2		B18	17.78	37	0.4	3209-033A
VJ-138		JT2	14.20	25	0.3	3209-034A
VJ-138-1	JT3	20.60	34	0.35	3209-034	
VJ-138-2	JT4	28.55	45	0.5	3209-035	
VJ-132	MT4	JT6	17.17	26	0.7	3209-031
VJ-132-1		JT3	20.60	34	0.7	3209-031A
VJ-132-7		JT4	28.55	45	0.85	3209-031B
VJ-132-4		JT5	35.89	50	1	3209-031C
VJ-132-5		JT2	14.2	25	0.64	3209-031D
VJ-132-6		JT33	15.85	28	0.65	3209-031E
VJ-132-8		B18	17.78	37	0.7	3209-031F
VJ-135		B16	15.733	29	0.7	3209-036
VJ-133	MT5	JT6	17.17	26	1.6	3209-032
VJ-133-1		JT3	20.60	35	1.6	3209-032A
VJ-133-2		JT4	28.55	46	1.8	3209-032B
VJ-133-3		JT5	35.89	51	2	3209-032C
VJ-133-4		JT2	14.2	26	1.6	3209-032D
VJ-133-5		JT33	15.85	29	1.6	3209-032E

COLLET SYSTEM

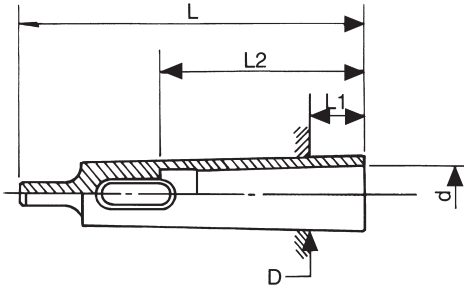
C12.16.20.25.32



ORDER NO.	SHANK $\varnothing D$	JT NO.	C	H	WEIGHT (kg)	CODE NO.
VJ-139	C20	JT1	9.754	19	0.2	3209-058
VJ-139-1		JT0	6.35	9	0.2	3209-058A
VJ-140		JT2	14.20	25	0.2	3209-059
VJ-140-1		JT3	20.60	35	0.2	3209-059A
VJ-140-2		B10	10.25	21	0.15	3209-059B
VJ-141		JT6	17.17	26	0.2	3209-060
VJ-140-3		B12	12.1	22.5	0.2	3209-060A
VJ-140-4		B16	15.733	26	0.2	3209-060B
VJ-140-5		B18	17.780	32	0.2	3209-060C
VJ-142		C25	JT6	17.17	26	0.3
VJ-143	C32	JT6	17.17	26	0.5	3209-062
VJ-147-1	C12	B12	12.1	22.5	0.1	3209-063
VJ-147-2	C12	B16	15.733	26	0.2	3209-064
VJ-147-3	C16	B12	12.1	22.5	0.2	3209-065
VJ-147-4	C16	B16	15.733	26	0.2	3209-066



Morse Taper Sleeve



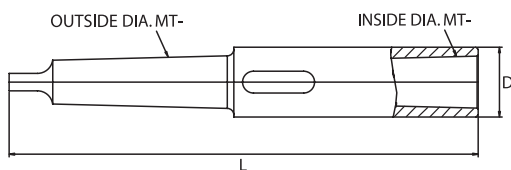
ORDER NO.	I.D.xO.D.	D	d	L	I1	I2	WEIGHT (kg)	CODE NO.
VQ-101	MT2xMT3	23.825	17.780	112	18	67	0.2	3210-001
VQ-102	MT2xMT4	31.267	17.780	124	6.5	67	0.5	3210-002
VQ-103	MT2xMT5	44.399	17.780	156	6.5	67	1.4	3210-003
VQ-104	MT2xMT6						4.13	3210-004
VQ-105	MT3xMT4	31.267	23.825	140	22.5	84	0.4	3210-005
VQ-106	MT3xMT5	44.399	23.825	156	6.5	84	1.3	3210-006
VQ-107	MT3xMT6	63.348	23.825	218	8	84	4	3210-007
VQ-108	MT4xMT5	44.399	31.267	171	21.5	107	1	3210-008
VQ-109	MT4xMT6	63.348	31.267	218	8	107	3.7	3210-009
VQ-110	MT5xMT6	63.348	44.399	218	8	133	2.9	3210-010
VQ-100	MT1xMT3	23.825	12.065	100	6	55	0.2	3210-011
VQ-100-1	MT1xMT2	17.780	12.065	89	14	55	0.22	3210-012
VQ-100-2	MT1xMT4	31.267	12.065	124	6.5	55	0.89	3210-013
VQ-100-3	MT1xMT5	44.399	12.065	156	7	55	1.33	3210-014



Morse Taper Extension Sockets

MORSE TAPER EXTENSION SOCKETS

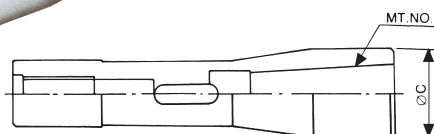
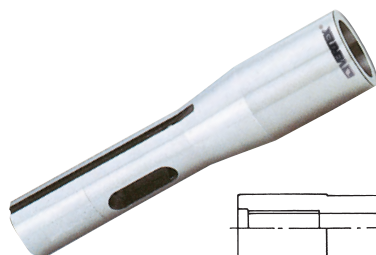
- For adapting tools with morse taper shanks to machine having smaller morse taper spindle or for adapting tools with morse taper shanks to machine having the same or larger morse taper spindle.
- Hardened and ground throughout.



ORDER NO.	I.D.xO.D.	D	L	WEIGHT (kg)	CODE NO.
VQ-111-3	MT1xMT2	18.2	160	0.28	3210-018
VQ-111-1	MT1xMT3	20.2	175	0.4	3210-019
VQ-111-2	MT1xMT4	20.2	204	0.35	3210-020
VQ-112	MT2xMT2	24.2	175	0.35	3210-021
VQ-112-1	MT2xMT3	24.2	194	0.5	3210-022
VQ-112-2	MT2xMT4	24.2	219	0.9	3210-022A
VQ-112-3	MT2xMT5	24.2	254	1.85	3210-022B
VQ-113	MT3xMT2	32.2	196	0.56	3210-023
VQ-114	MT3xMT3	32.2	215	0.7	3210-024
VQ-115	MT3xMT4	32.2	240	1.1	3210-025
VQ-115-1	MT3xMT5	32.2	275	2.1	3210-025A
VQ-115-2	MT4xMT2	45.2	221	1.25	3210-026A
VQ-116	MT4xMT3	45.2	240	1.4	3210-026
VQ-117	MT4xMT4	45.2	265	1.7	3210-027
VQ-118	MT4xMT5	45.2	300	2.7	3210-028
VQ-119-1	MT5xMT3	63.2	275	3	3210-029A
VQ-119	MT5xMT4	63.2	300	3.25	3210-029
VQ-120	MT5xMT5	63.2	335	4.2	3210-030



R8 With Morse Taper Sleeve



ORDER NO.	SHANK	SIZE	MT NO.	WEIGHT (kg)	CODE NO.
VQ-121	R8	R8-MT1	MT1	0.36	3211-003
VQ-122	R8	R8-MT2	MT2	0.4	3211-001
VQ-123	R8	R8-MT3	MT3	0.5	3211-002



Face Mill Arbor



NT30, 40, 50, R8, MT3, 4

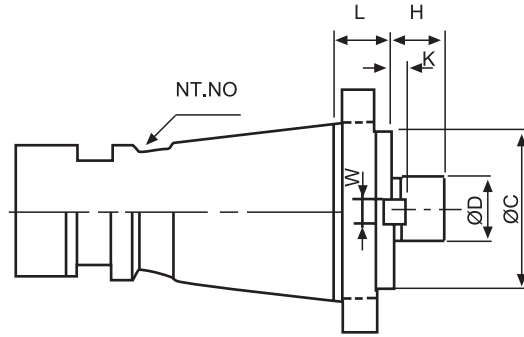
DIN 2080/ISO SHANK



NT40 WITH MAHO GAP



NT30



MATERIAL:SCM-21 HARDNESS:HRC 50°-55°

Squareness of mounting surface:Less than 0.0002"(0.005mm)

Deflection in shaft and taper:Less than 0.0002"(0.005mm)

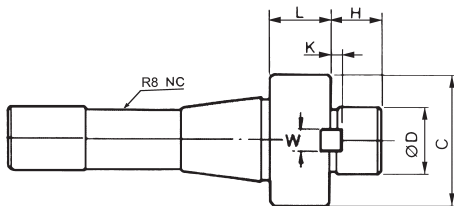
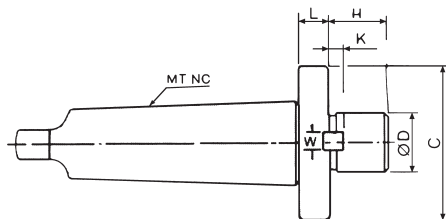


INCH THREAD
INCH FMA TYPE

ORDER NO.	TAPER	SHAFT SIZE				MOUNTING SIZE		WEIGHT (kg)	CODE NO.
		D	H	W	K	C	L		
VF-101	NT30	25.4	20	9.57	5	65	20	0.7	3212-001
VF-102		31.75	23	12.75	7	73	20	1	3212-002
VF-103		38.1	22	15.90	9	82	20	1.1	3212-003
VF-104	NT40	25.4	20	9.57	5	65	20	1.2	3212-004
VF-105		31.75	22	12.75	7	73	20	1.5	3212-005
VF-106		38.1	23	15.90	9	82	20	1.8	3212-006
VF-109	NT50	25.4	20	9.57	5	65	20	3.2	3212-009
VF-110		31.75	22	12.75	7	73	20	3.3	3212-010
VF-111		38.1	23	15.90	9	82	20	3.6	3212-011
VF-112	R8	50.8	24	19.05	10	95	20	4	3212-012
VF-114		25.4	20	9.57	5	40	20	0.9	3212-014
VF-115		31.75	22	12.75	7	53	20	1.2	3212-015
VF-116	MT-3	25.4	20	9.57	5	40	20	0.7	3212-016
VF-117	MT-4	25.4	20	9.57	5	40	20	1	3212-017

METRIC FMB TYPE MM THREAD

ORDER NO.	TAPER	SHAFT SIZE				MOUNTING SIZE		WEIGHT (kg)	CODE NO.
		D	H	W	K	C	L		
VF-120	NT30	22	18	9.57	5	40	20	0.7	3212-100
VF-121		27	20	12.75	7	53	20	0.8	3212-101
VF-122		32	23	15.90	7	63	20	1.1	3212-102
VF-123	NT40	22	18	9.57	5	40	20	1.2	3212-103
VF-124		27	20	12.75	7	53	20	1.3	3212-104
VF-125		32	23	15.90	7	63	20	1.4	3212-105
VF-126		40	26	19.05	8	85	20	1.9	3212-106
VF-127	NT50	60	32	25.40	5	128	24	4	3212-107
VF-128		22	18	9.57	5	40	20	3.1	3212-108
VF-129		27	20	12.75	7	53	20	3.3	3212-109
VF-130	R8	32	23	15.90	7	63	20	3.5	3212-110
VF-131		40	26	19.05	8	85	20	3.7	3212-111
VF-132		60	32	25.40	5	128.57	24	5.4	3212-112
VF-134	MT-3	22	18	9.57	5	40	20	0.9	3212-113
VF-135		27	20	12.75	7	53	20	1	3212-114
VF-136	MT-3	27	20	9.57	7	53	20	0.7	3212-115
VF-136-1		22	16	9.57	7	46	13.5	0.7	3212-115A
VF-137	MT4	27	20	9.57	7	53	20	1.1	3212-116



FACE MILL ARBOR



Morse Taper Adapter

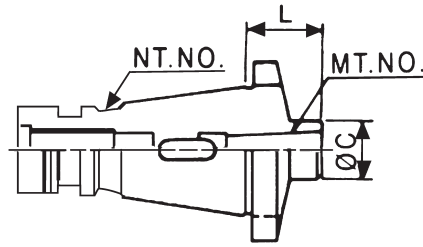


NT-30, 40, 50, R8, MT3, 4

DIN 2080/ISO SHANK

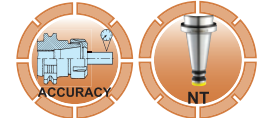


MORSE TAPER ADAPTER WITH STRAIGHT SHANK



SIDE CUTTER ARBOR

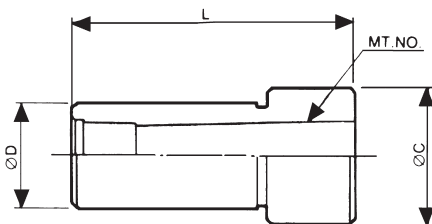
ORDER NO.	CODE NO.
R8-SCA1	3211-080
NT30-SCA1	3211-081
ST40-SCA1	3211-082



STANDARD TYPE

ORDER NO.	TAPER	TYPE	C	L	WEIGHT (kgs)	CODE NO.
VI-102	NT30	MT2	32	50	0.6	3211-031
VI-103		MT3	35	65	0.7	3211-032
VI-104	NT40	MT1	25	30	0.9	3211-033
VI-105		MT2	32	30	1	3211-034
VI-106		MT3	40	70	1.2	3211-035
VI-107	NT50	MT4	50	90	1.5	3211-036
VI-108		MT2	32	30	2.8	3211-037
VI-109		MT3	40	30	2.7	3211-038
VI-110		MT4	50	45	3.2	3211-039
VI-111		MT5	65	105	3.7	3211-040

PLEASE NOTIFY THE DRAW BAR THREAD SIZE IS MM SIZE OR INCH SIZE WHEN ORDERING.



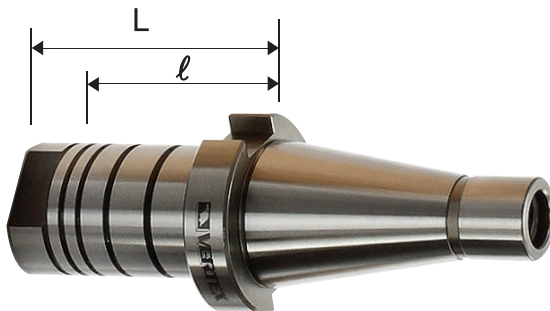
STANDARD TYPE

ORDER NO.	TAPER	SIZE	D	MT NO	C	L	WEIGHT (kg)	CODE NO.
VI-131	C20	C20-MT1	20	MT1	27	60	0.2	3211-060
VI-132		C20-MT2	20	MT2	27	70	0.2	3211-061
VI-133	C25	C25-MT1	25	MT1	33	60	0.3	3211-062
VI-134		C25-MT2	25	MT2	33	70	0.2	3211-063
VI-135		C25-MT3	25	MT3	33	90	0.2	3211-064
VI-136	C32	C32-MT1	32	MT1	37	60	0.36	3211-065
VI-137		C32-MT2	32	MT2	37	70	0.37	3211-066
VI-138		C32-MT3	32	MT3	37	90	0.35	3211-067
VI-138-4		C32-MT4	32	MT4	37	112	0.3	3211-068

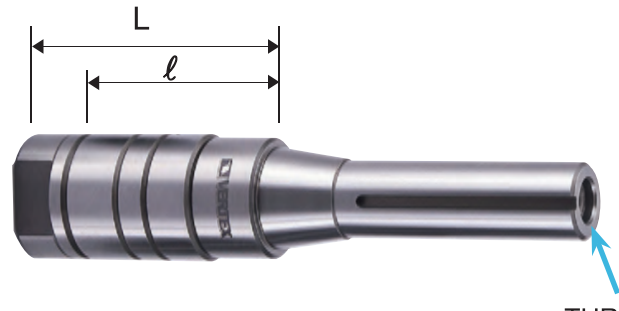


Side Cutter Arbor

VRA-NT40



VRA-R8



INCH

ORDER NO.	THREAD	L	l	CODE NO.
R8-SCA1"	7/16-20 UNF	86	62	3211-080
NT30-SCA1"	1/2-12 NC	84	60	3211-081
NT40-SCA1"	5/8-11 NC	88	65	3211-082

METRIC

ORDER NO.	THREAD	L	l	CODE NO.
R8-SCB22	7/16-20 UNF	86	62	3211-086
NT30-SCB27	M12 x 1.75P	84	60	3211-087
NT40-SCB27	M16 x 2.0P	88	65	3211-088

THREAD

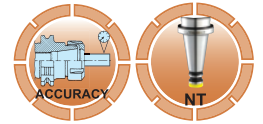
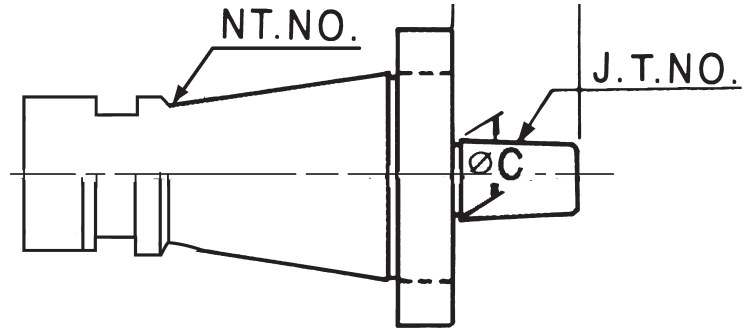


Jacobs Taper Drill Chuck Arbor



NT30, 40, 50-JT & B

DIN 2080/ISO SHANK



MORSE TAPER ADAPTER

ORDER NO.	TAPER	JT NO	C	H	WEIGHT (kgs)	CODE NO.
VJ-103	NT30	JT6	17.17	26	0.6	3209-092
VJ-106	NT40	JT6	17.17	26	1	3209-095
VJ-109	NT50	JT6	17.17	26	3.2	3209-098
VJ-111	NT30	B16	15.733	24	0.5	3209-099
VJ-112	NT40	B16	15.733	24	1	3209-100

PLEASE NOTIFY THE DRAW BAR THREAD SIZE IS MM SIZE OR INCH SIZE WHEN ORDERING.



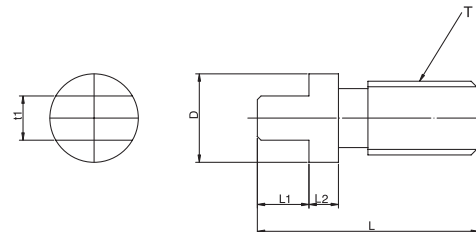
Tang For Morse Taper Shank

SURFACE TREATMENT: BLACKENING

HRC 45°



Tang for draw bar thread type to tang type



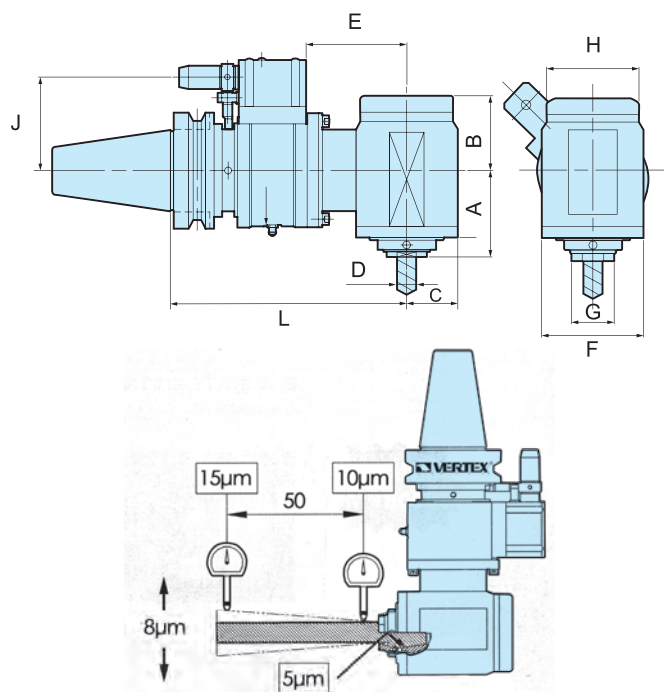
ORDER NO.	Morse	D	L	L1	L2	T	t1	WEIGHT	CODE NO.
VMTS-2	2	12	30	7	4	M10X1.5	6	0.02	3209-201
VMTS-3	3	17	40	12	4	M12X1.75	7.5	0.04	3209-202
VMTS-4	4	24	46	13	5	M16X2	11.5	0.09	3209-203
VMTS-5	5	34	47	14	5	M24X3	15.5	0.18	3029-204



NC Right Angle Head



High Precision



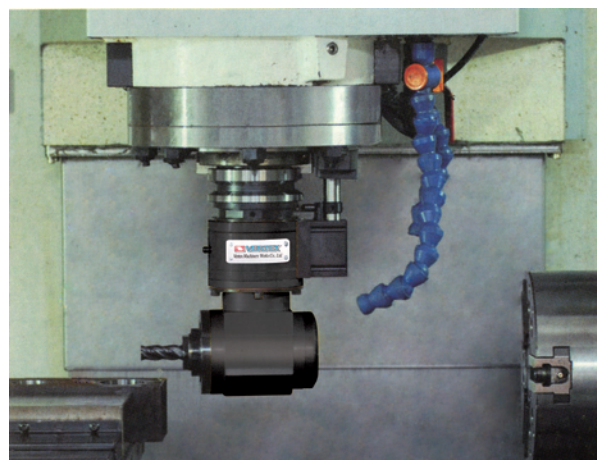
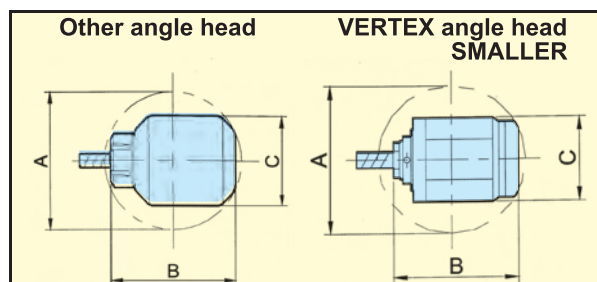
Minimum interference

ORDER NO.	A	B	C	ØD	E	F	ØG	H	L	J	WEIGHT	CODE NO.
BT40-RAER32-185	78.2	63.8	44	2-20	113	88	36	80	185	65	9	3214-201
BT50-RAER32-195					113				195	80	14	3214-202
SK40-RAER32-176					113				176	65	8.8	3214-203
SK50-RAER32-173					113				173	80	13	3214-204

VERTEX ANGLE HEAD MORE SMALLER

Interference size contrast

	A	B	C
Other angle head Max. clamping diameter Ø20	Ø171	88	160
VERTEX = Angle head Max. clamping diameter Ø20	Ø156	88	140



- Turn Vertical Machine To Horizontal
- Clamping range Ø 2- 20
- Max. speed : 3000 P. P. M.
Drive ratio 1:1
- For Light Cutting-facing, Drilling, Tapping & Internal Surface Machining
- Suitable For ATC
- Use Standard BT Shank & ER32 Collets
- Built Internal Collet Chuck System Assure The High Accuracy
- High Precision & Rigid-Made Body
- Free Adjustment OF The Driving Key & Location PIN
- For Special Angle Cutting (NC Universal Angular Head)
- Compact Design : Low Ineterference
- With Special Wrench
- Cautions : Check With VERTEX & Machine Tool Manufacturer First For The Machine Mounting Specification & Pull Stud.

CAUTION

The machine tool's spindle and angle head should Rotate in opposite direction, when use, please make sure machine tool's spindle is Rotating in Reverse direction.



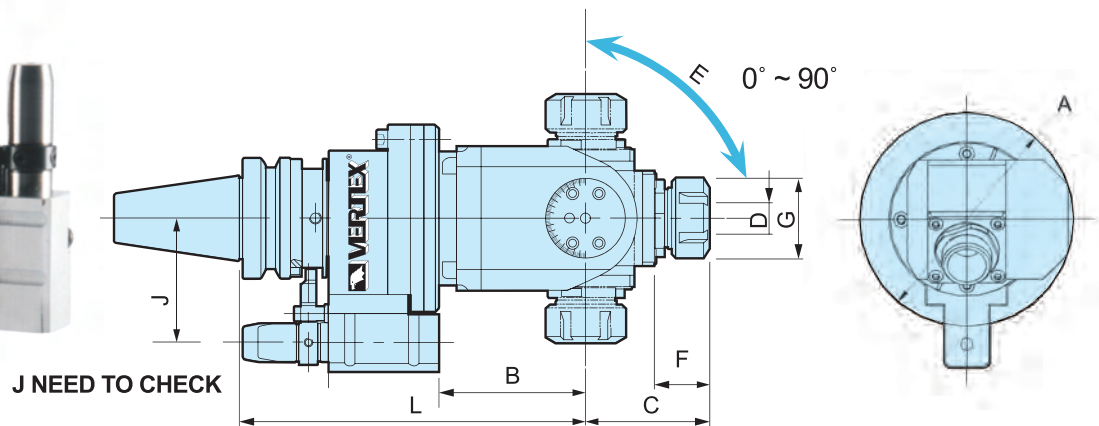
NC Universal Angular Head



NEW



- Angular Head can be ROTATE 360°
- Angular adjust angle = 0° ~ 90°, 2° graduation.



- Clamping Range $\varnothing 2 - \varnothing 16$
- Max. speed : 3000 P. P. M.
- Drive ratio 1:1

ANGULAR HEAD

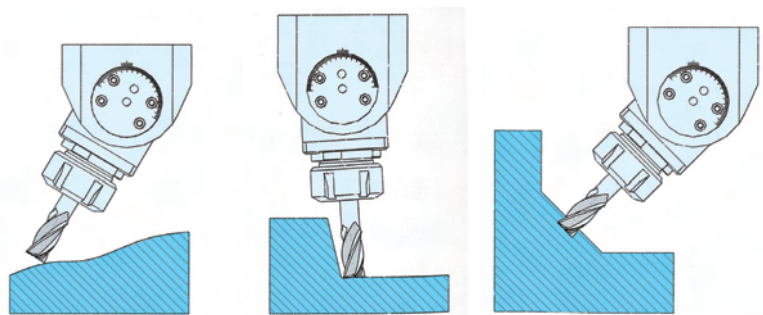
ORDER NO.	A	B	C	$\varnothing D$	E	F	$\varnothing G$	L	J	WEIGHT	CODE NO.
BT40-UAER25-182	138	80	65	2-16	$\pm 90^\circ$	29	42	182	65	9.2	3214-221
BT50-UAER25-200								200	80	13.6	3214-222
SK40-UAER25-173								173	65	9	3214-223
SK50-UAER25-178								178	80	12.6	3214-224

- For Light Cutting-facing, Drilling, Tapping & Internal Surface Machining
- Suitable For ATC
- Use Standard BT Shank & ER32 Collets
- Built Internal Collet Chuck System Assure The High Accuracy
- No Need To Hire Special Engineers
- Easy To Achieve High Precision
- Turn Vertical Machine To Horizontal

- High Precision & Rigid-Made Body
- Free Adjustment Of The Driving Key & Location PIN
- For Special Angle Cutting (NC Universal Angular Head)
- Compact Design : Low Ineterference
- With Special Wrench
- Cautions : J Check With VERTEX & Machine Tool Manufacturer First For The Machine Mounting Specification & Pull Stud.

CAUTION

The machine tool's spindle and angle head should Rotate in opposite direction, when use, please make sure machine tool's spindle is Rotating in Reverse direction.



Profile machining

Pattern taper machining

Oblique surface machining



Oli-Feed Holder / Slo

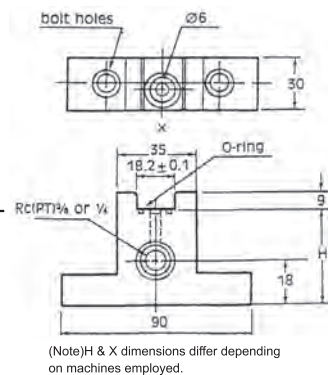
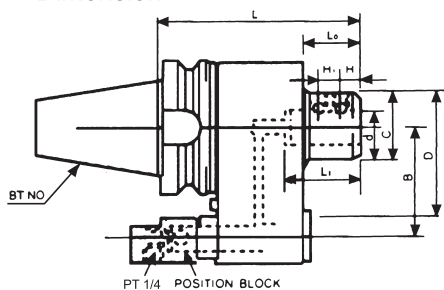


Coolant hole holder for straight shank

BT40,BT50



Dimension



(Note)H & X dimensions differ depending on machines employed.

POSITIONING BLOCK

In using, OIL-FEED holder, positioning block illustrated here is necessary.

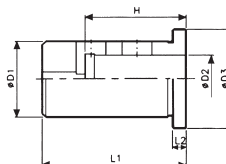
The positioning block can be mounted to the spindle guide but it shall be mounted so as not to interfere with ATC arm, etc. of machine. it is necessary to consult the machine manufacturer about the proper mouting.

Unit:mm

ORDER NO.	d	L	B	C	D	L0	L1	H	H1	WEIGHT(kgs)	CODE NO.
BT40SLO32-165	32	165	65	53	90	52	60	15	15	4KGS	3214-001
BT50SLO32-165	32	165	80	54	100	42	60	15	15	7.1KGS	3214-003
BT50SLO40-170	40	170	80	64	100	52	70	19	18	7.8KGS	3214-004



Reducing sleeve for oil feed holder.



ORDER NO.	D1	D2	D3	L1	L2	H	WEIGHT(kg)	CODE NO.
OC32-20	32	20	42	63	6	48	0.4	3214-103
OC32-25		25				54	0.3	3214-104
OC40-25	40	25	50	63	6	54	0.6	3214-105
OC40-32		32				58	0.5	3214-106

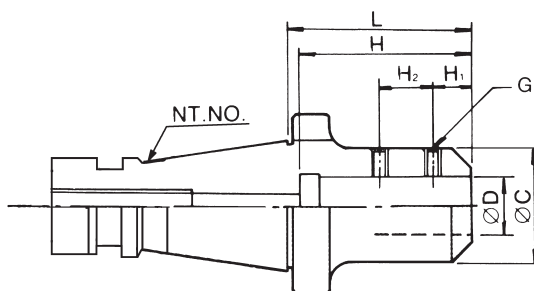


Sidelock END Mill Holder

NT30, 40, 50, R8-SLA

DIN 2080

ISO SHANK



Unit:mm

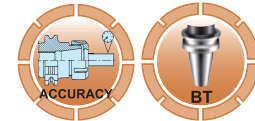
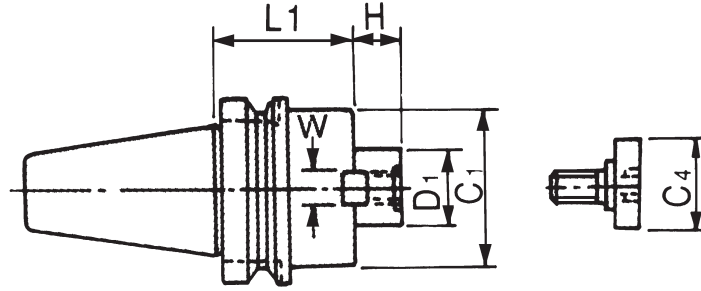
ORDER NO.	TAPER	D	C	H	L	H1	H2	G	WEIGHT(kgs)	CODE NO.
VN-102	NT30	16	45	50	60	22	18	M10	0.7	3213-002
VN-103	NT30	20	50	60	65	25	20	M12	0.8	3213-003
VN-105	NT40	12	40	45	55	20	16	M10	1.0	3213-005
VN-106	NT40	16	45	50	60	22	18	M10	1.2	3213-006
VN-107	NT40	20	50	60	65	25	20	M12	1.3	3213-007
VN-108	NT40	25	50	65	75	25	22	M12	1.5	3213-008
VN-109	NT40	32	60	70	90	30	22	M16	1.7	3213-009
VN-112	NT50	16	45	50	60	22	18	M10	3.1	3213-012
VN-118	R8	12	40	45	55	20	16	M10	0.7	3213-018
VN-120	R8	20	50	60	65	25	20	M12	1.0	3213-020
VN-122	NT40	6	25	48	50	9	9.5	M6	0.9	3213-022
VN-123	NT40	8	28	54	56	14	15.5	M8	0.92	3213-023
VN-124	NT40	10	35	52	54	15	13.5	M10	1.03	3213-024



Face Mill Arbor

BT30,40,50

BT-SHANK MAS 403



INCH FMA TYPE

ORDER NO.	TAPER	D1	L1	H	C1	W	C4	N.W. (KG)	CODE NO.
BT-101	BT30	25.4	45	22	45	9.5	33	1.0	3212-201
BT-103	BT40	25.4	45	22	50	9.5	33	1.6	3212-203
BT-105		25.4	90	22	50	9.5	33	1.6	3212-205
BT-106		31.75	45	30	60	12.7	40	1.8	3212-206
BT-108		31.75	90	30	60	12.7	40	2.8	3212-208
BT-109		38.1	60	34	74	15.9	50	2.5	3212-209
BT-111	BT50	25.4	45	22	60	9.5	33	4.2	3212-211
BT-112		25.4	105	22	50	9.5	33	4.9	3212-212
BT-113		25.4	150	22	50	9.5	33	6.2	3212-213
BT-114		31.75	45	30	70	12.7	40	4.0	3212-214
BT-115		31.75	75	30	60	12.7	40	4.8	3212-215
BT-116		31.75	105	30	60	12.7	40	5.6	3212-216
BT-117		38.1	45	34	85	15.9	50	4.6	3212-217
BT-118		38.1	75	34	85	15.9	50	5.6	3212-218
BT-119		50.8	45	36	95	19.05	65	4.8	3212-219
BT-121		47.625	75	38	128.57	25.4	-	7.9	3212-221

METRIC FMB TYPE

ORDER NO.	TAPER	D1	L1	H	C1	W	C4	N.W. (KG)	CODE NO.
BT-150	BT30	22	45	18	48	10	33	2.0	3212-267
BT-151		27	45	20	60	12	33	2.2	3212-268
BT-152	BT40	22	45	18	48	10	50	1.5	3212-269
BT-153		22	90	18	48	10	33	2.2	3212-270
BT-154		27	45	20	60	12	33	1.7	3212-271
BT-155		27	90	20	60	12	33	2.7	3212-272
BT-156		32	45	22	62	14	50	1.8	3212-273
BT-157		40	60	26	85	16	50	2.7	3212-274
BT-158	BT50	22	45	18	60	10	33	4.2	3212-275
BT-159		22	75	18	60	10	33	4.6	3212-276
BT-160		27	45	20	70	12	33	4.3	3212-277
BT-161		27	75	20	60	12	33	4.9	3212-278
BT-162		27	105	20	60	12	33	5.7	3212-279
BT-163		32	75	22	75	14	50	5.5	3212-280
BT-164		32	105	22	80	14	33	6.5	3212-281
BT-165		32	150	22	80	14	33	8.7	3212-282
BT-166		40	75	26	85	16	50	6	3212-283

FACE MILL ARBOE