



# Arm Type Air Tapping Unit

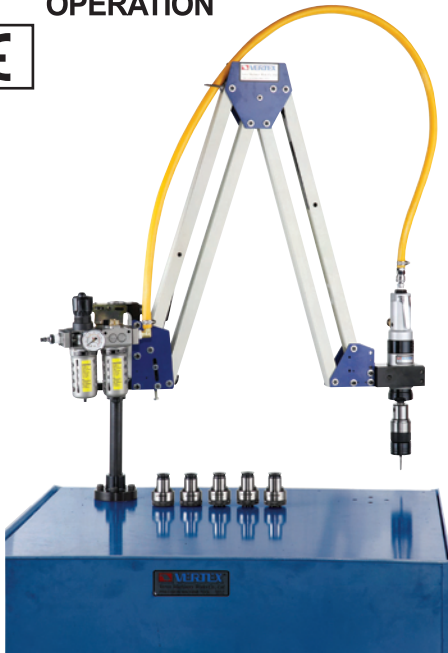


**HIGH TORQUE HIGH EFFICIENCY EASY OPERATION**

**WORK RANGE**

**1600X500m/m**

**RMAX. X MIN.**



※Base not included

**VAT-1608/1612/1616**

**VAT-1620/1622/1624**

## To solve all tapping problems

- Rapid positioning and high machining speed increase productivity.
- Lower tap damage rate, high thread accuracy.
- Tap shall never break for tapping through-hole or blind-hole.
- Tapping for heavier workpiece requires neither positioning equipments nor movement or large work area. Lower machining cost than that by CNC machine, drilling machine or manual tapping operation. Drilling to max: 6mm diameter
- Easy operation, no experience or strength required.
- Without stand plate.
- Air pressure: 6~8 kgs/cm<sup>2</sup>
- VAT-08/12 series require: 5HP compressor
- VAT-16/20 series require: 10HP compressor

● ※ GUARANTEED FOR 3 MONTHS.

● ※ MUST INSTALL ON A STABLE / HARD SURFACE FOR PARALLEL WORK.

## Suggest collet size for standard acces



VAT-□□**08** COLLET SIZE TC312-M3,M4,M5,M6\*2,M8

VAT-□□**12** COLLET SIZE TC312-M5,M6,M8\*2,M10,M12

VAT-□□**16** COLLET SIZE TC312/TC820

TC312-M8,M10

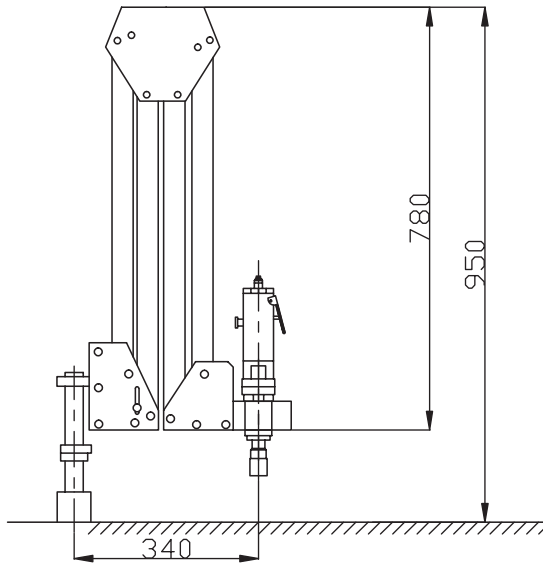
TC820-M10,M12,M14,M16

VAT-□□**20** COLLET SIZE TC820-M10,M12,M14,M16,M18,M20

VAT-□□**22** COLLET SIZE TC820-M12,M14,M16,M18,M20,M22

VAT-□□**24** COLLET SIZE TC820-M14,M16,M18,M20,M22,M24

## JIS & DIN376 Most Populared



ORDER NO.	VAT-1608	VAT-1612	VAT-1616	VAT-1620	VAT-1622	VAT-1624
For Tap	M3~M8	M5~M12	M8~M16	M10~M20	M12~M22	M14~M24
	TC-312	TC-312	TC-820	TC-820	TC-820	TC-820
Speed (rpm)	700	400	250	200	200	100
Weight (kgs)	16.9	17	21.1	24.6	24.6	26.10
Work Range	Rmax 1600mm					
	Rmin 500mm					
CODE NO.	3404-420	3404-421	3404-422	3404-428	3404-428A	3404-428B

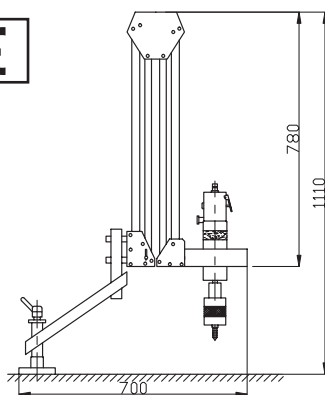
**VAT-1608, 1612, 1616, 1620, 1622, 1624**

## STANDARD ACCESSORIES

- Air tapping spindle
- Parallel arm
- Table mounting column
- Air combination
- Choose any six safety clutch tapping adapters



# Air Tapping Unit



## STANDARD ACCESSORIES:

- Air tapping spindle
- Parallel arm & Air combination
- Table mounting column
- Choose any six safety clutch tapping adapters
- Radial jib, increases arm reach by 500 mm
- Air pressure: 6~8 kgs / cm<sup>2</sup>
- VAT-08/12 series require: 5HP compressor
- VAT-16/20 series require: 10HP compressor

※Base not included

ORDER NO.	VAT-1908	VAT-1912	VAT-1916	VAT-1920	VAT-1922	VAT-1924
For Tap	M3~M8	M5~M12	M8~M16	M10~M20	M12~M22	M14~M24
	TC-312	TC-312	TC-820	TC-820	TC-820	TC-820
Speed (rpm)	700	400	250	180/200	185/205	90/100
Weight (kgs)	19.7	23.9	23.5	26	28	28
Work Range	Rmax 1900mm					
	Rmin 200mm					
CODE NO.	3404-425	3404-426	3404-427	3404-430	3404-431	3404-431A

※VAT-1924 can be replaced by VAT-1624

※GUARANTEED FOR 3 MONTHS.



# Air Tapping Spindle

High torque, high efficiency for machining all tapping requirement. Light and handy main shaft design, easy operation.

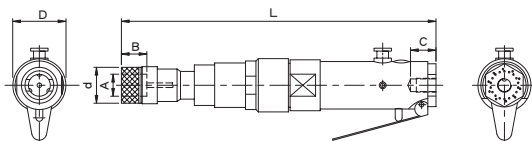
**The required pressure is 6.3kg/cm<sup>2</sup>=90 PSI.**

- SP08 & SP12 Required 5 HP compressor and more.
  - SP16 & SP20 Required 10 HP compressor and more.
- (must keep the air pressure at 6.3kg/cm<sup>2</sup>)

※GUARANTEED FOR 3 MONTHS.



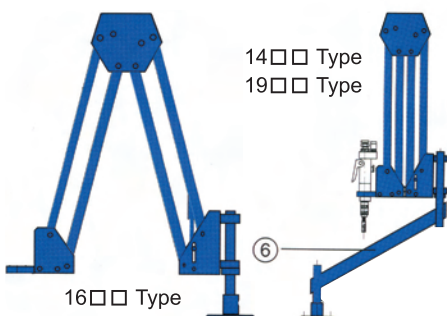
ORDER NO.	TAPPING CAPACITY	SPEED (rpm)	MOUNTING DIA.	WEIGHT (kgs)	CODE NO.
VAT-SP08	M3-M8	630/700	ø38.5 (1 1/2")	1.5	3404-432
VAT-SP12	M5-M12	350/400	ø38.5 (1 1/2")	1.5	3404-433
VAT-SP16	M8-M16	230/250	ø61.3 (2 13/32")	3.9	3404-434
VAT-SP20	M10-M20	180/200	ø61.3 (2 13/32")	3.9	3404-435
VAT-SP22	M12-M22	185/205	ø61.3 (2 13/32")	3.9	3404-435A
VAT-SP24	M14-M24	90/100	ø61.3 (2 13/32")	4.3	3404-435B



ORDER NO.	A	B	C	D	d	L	CODE NO.
VAT-SP08	19	30	22	46	32	263	3404-432
VAT-SP12	19	30	22	46	32	263	3404-433
VAT-SP16	31	48	27	65	50	360	3404-434
VAT-SP20	31	48	27	65	50	360	3404-435
VAT-SP22	31	48	27	65	50	360	3404-435A
VAT-SP24	31	48	27	65	50	395	3404-435B



# Parallel Arm For Air Tapping Unit



## PARALLEL ARM

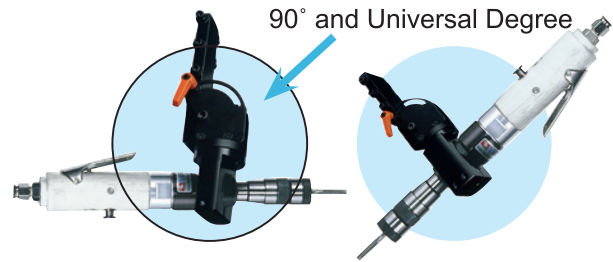
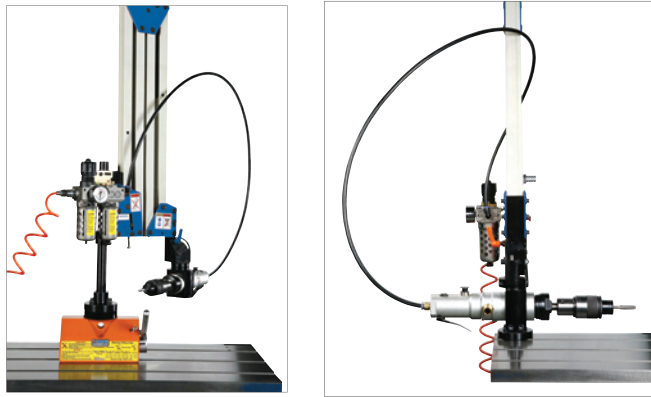
FOR THE AIR TAPPING UNIT

ORDER NO.	WEIGHT SP-08	WEIGHT SP-12	WEIGHT SP-16	CODE NO.
VAT-ARM700-SP [08, 12, 16]	12kgs	12kgs	14kgs	3404-436
VAT-ARM1400x200-SP [08, 12, 16]	17kgs	17kgs	18kgs	3404-437
VAT-ARM1600x500-SP [08, 12, 16]	17kgs	17kgs	18kgs	3404-438
VAT-ARM1900x200-SP [08, 12, 16]	19kgs	19kgs	20kgs	3404-439

※ MUST INSTALL ON A STABLE / HARD SURFACE FOR PARALLE WORK.



# Adjustable Angle Head For Air Tapping Unit



ORDER NO.	FOR VAT-TYPE	WEIGHT (kg)	CODE NO.
AT08-90°	VAT-1408 VAT-1908	1.1	3404-440
AT12-90°	VAT-1412 VAT-1912	1.1	3404-441

ORDER NO.	FOR VAT-TYPE	WEIGHT (kg)	CODE NO.
AT16-90°	VAT-1416 VAT-1916	1.5	3404-442
AT20-90°	VAT-1920	1.5	3404-443
AT22-90°	VAT-1922	1.5	3404-444
AT24-90°	VAT-1924	1.5	3404-446



# Magnetic Base For Air Tapping Unit

PORTABLE & MOVEABLE AIR TAPPING ARM

● Special Accessory for VAT-Series

※ MUST INSTALL ON A STABLE / HARD SURFACE FOR PARALLEL WORK.



MAGNETIC BASE

EXAMPLE



ORDER NO.	Magnetic Base		suit For VAT-Type	Weight (kgs)	CODE NO.
	Holding Power	Dimension LXWXH(mm)			
VLM-300A	300kg	155x90x93	VAT-708, 712, 716 VAT-1408, 1412, 1416 VAT-1608, 1612, 1616 VAT-1908, 1912, 1916	9.4	3404-450
VLM-600A	600kg	224x115x120	VAT-720, 722, 724 VAT-1420, 1422, 1424 VAT-1620, 1622, 1624 VAT-1920, 1922, 1924	21.9	3404-451



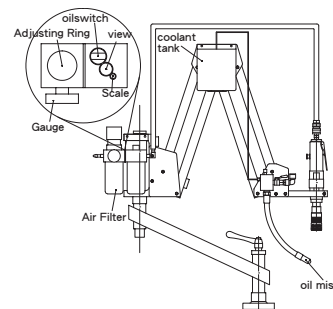
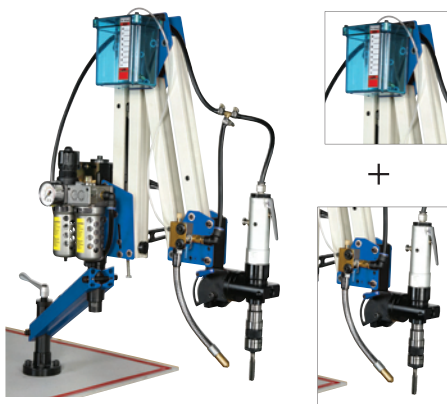
# Mist Coolant System For Air Tapping Unit

ORDER NO.VAC-08 CODE NO.3404-452  
Without Oil

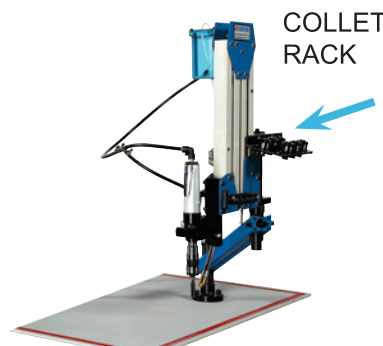


# Collet Rack For Air Tapping Unit

ORDER NO.VCR-08 CODE NO.3404-453



ENLARGE THE TAPPER LIFE 50%



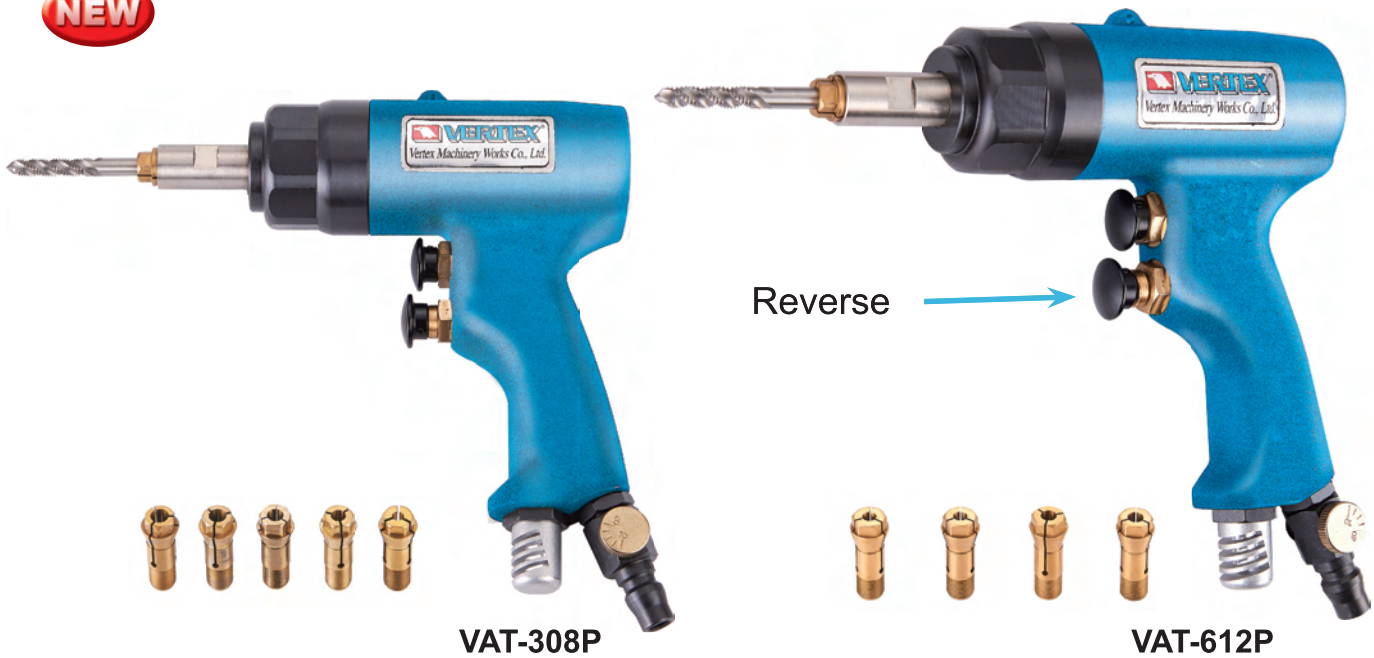


# Portable Air Tapper



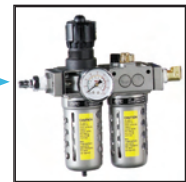
**NEW**

JIS STANDARD TAP



- Light weight.
- Suitful big workpiece.
- Powerful.
- Easy operation.
- Required air pressure 6kg/cm<sup>2</sup>

- Air consumption is 0.25 ℓ/min.
- Required install air combination.
- Lubricate air inlet connector with 3 c.c. oil. Always before and after using.



AIR TAPPING UNIT

## SET TYPE

ORDER NO.	TAPPING CAPACITY	COLLET SET (pcs/set)	WORKING SPEED (Y.P.M.)	SPINDLE SPEED (R.P.M.)	HOSE CONNECT SIZE	OVERALL LENGTH (mm)	N.W. (kgs)	CUFT	CODE NO.
VAT-308P	M3~M8	5 pcs	350	8500	PT 1/4"	158 mm	0.9	0.13	3404-471
VAT-612P	M6~M12	4 pcs	280	8000	PT 1/4"	168 mm	1.1	0.13	3404-472

## ACCESSORIES COLLET SIZE pcs / set

ORDER NO.	∅D x JIS STD. FOR TAP SIZE	pcs/ set	N.W. (kgs)	CODE NO.
VAT-308PC	M3 (∅ 4 x 3.2) x 1pcs M4 (∅ 5 x 4) x 1pcs M5 (∅ 5.5 x 4.5) x 1pcs	5 pcs/set	0.2	3404-481
VAT-612PC	M6 (∅ 6 x 4.5) x 1pcs M8 (∅ 6.2 x 5) x 1pcs	4 pcs/set	0.3	3404-482



## Note For VAT-Series / VAG-Series

### CAUTIONS

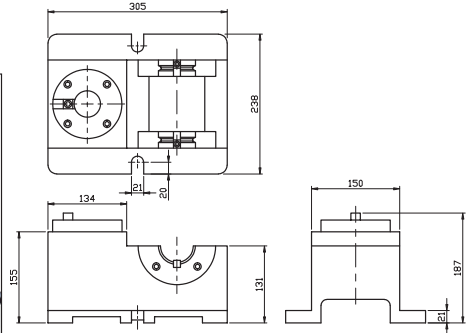
**! CAUTION:**



1. AIR COMPRESSOR PRESSURE 6~8 kg / cm<sup>2</sup>, DRY AIR.
2. Always check oil level of the 3 in 1 air combination.
3. Tapping ARM has to be mounted on the same hardened work plate.
4. SET THE WORKPIECE SURFACE TO BE PARALLELED WITH TAPPING ARM STAND.
5. Always supply cutting oil while tapping.
6. Work every 1 hour rest 10 to 15 minutes, 8 hours per day. Every 3 months need service.
7. After use, drop some #60 oil / lubrication into air inlet. Air hose & connector must be cleaned before use!



# Deluxe Type Tool Setting Stand

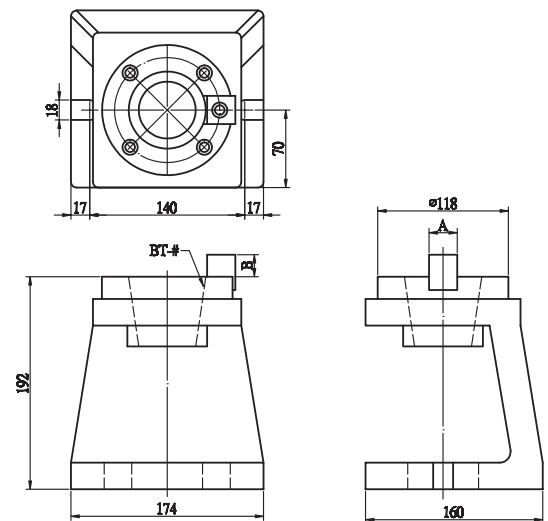
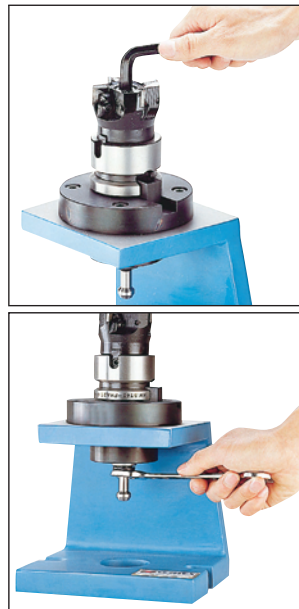


- This tool setting stand is one kind of subsidize tool for helping machine center to work efficiently. To be used fixing the tools on tool holder. It could avoid the method of using draw bar to fix (on machine center). It is safe, and doesn't effect the precision of machine's spindle.
- It's best for using on horizontal or vertical lines, simple & quick operations.
- A multi-function tool, it is changeable, has two kinds of specifications can be used. That is to say, one machine could be used as two sets machines.
- Additional special accessories to make your operating more convenient.
- CAT & SK share same model.

ORDER NO.	SHANK TAPERS		WEIGHT (kgs)	CODE NO.
	TOOL POST	ADAPTER HOLDING		
VTD-1	BT-#40x1	BT-#40x2	22.4	3405-001
VTD-2	BT-#50x1	BT-#50x2	22	3405-002
VTD-3	BT-#50x1	BT-#50x1 BT-#40x1	24	3405-003
VTD-4	BT-#40x1	BT-#50x1 BT-#40x1	24	3405-004
VTD-5	SK-40x1	SK-40x2	26	3405-005
VTD-6	SK-50x1	SK-50x2	24	3405-006
VTD-7	SK-50x1	SK-50x1 SK-40x1	25	3405-007
VTD-8	SK-40x1	SK-50x1 SK-40x1	25	3405-008
VTD-9	BT-30x1	BT-30x2	23	3405-009
VTD-10	SK-30x1	SK-30x2	23	3405-009A



# Simple Type Tool Setting Stand

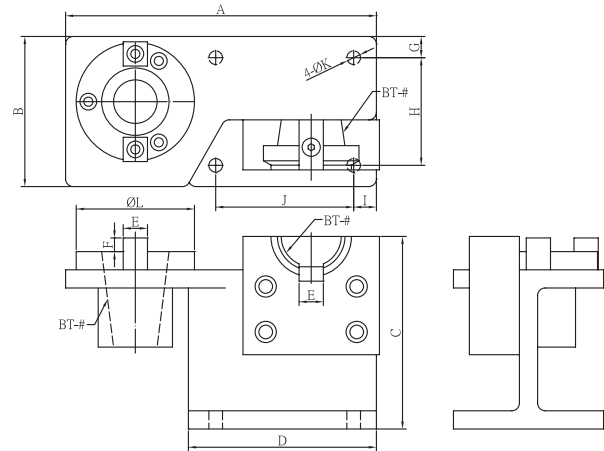


- This tool setting stand is one kind of subsidize tool for helping machine center to work efficiently. To be used fixing the tools on tool holder. It could avoid the method of using draw bar to fix (on machine center). It is safe, and doesn't effect the precision of machine's spindle.
- It is simple structive type. And could fix tooling on the above and hold the pull studs on the below of it. This is the excellent helping tools for simple, rapid and safe.

ORDER NO.	SHANK TAPERS	STD	WEIGHT (kg)	CODE NO.
VTS-BT-30	30	BT ISO NT	11.9	3405-010
VTS-BT-40	40		12.4	3405-011
VTS-BT-50	50		11.9	3405-012
VTS-SK-30	30	CAT DIN 69871A	11.9	3405-013
VTS-SK-40	40		12.4	3405-014
VTS-SK-50	50		11.9	3405-015



# Tool Holder Locking Device



ORDER NO.	STD	WEIGHT (KGS)	CODE NO.
VTG-BT30	ISO BT	4.1	3405-020
VTG-BT40		4.2	3405-021
VTG-BT50		11.8	3405-022
VTG-SK40	CAT SK DIN69871A	4	3405-024
VTG-SK50		12.3	3405-025

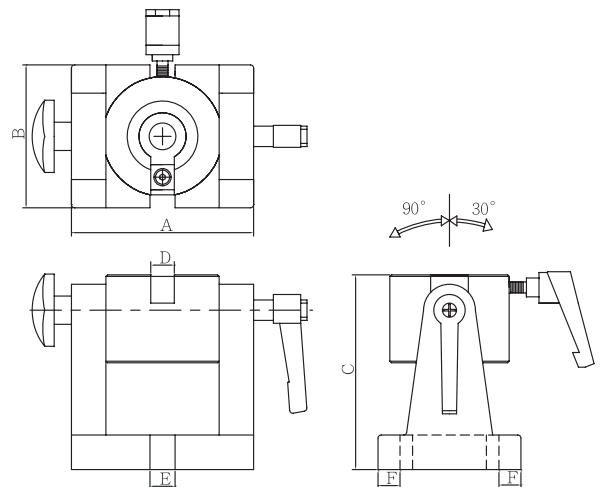
ORDER NO.	A	B	C	D	E	F	G	H	I	J	K	L	CODE NO.
VTG-BT30	205	99	127	124	15	10	16	71	15	91	9	78	3405-020
VTG-BT40	205	99	127	124	16	9	14	71	15	91	9	78	3405-021
VTG-BT50	282	152	203	162	25	16	22	108	25	115	9	115	3405-022

TOOL HOLDER LOCKING



# Tool Holder Locking Device

TILTING TYPE



Example Shank Not Included

ORDER NO.	STD	WEIGHT (KGS)	CODE NO.
VTL-BT30	ISO BT	4.2	3405-030
VTL-BT40		4.3	3405-031
VTL-BT50		9.8	3405-032
VTL-SK30	DIN69871A	4	3405-033
VTL-SK40		4	3405-034
VTL-SK50		8	3405-035
VTL-NT30	NT	4.2	3405-036
VTL-NT40		4.3	3405-037
VTL-NT50		9.8	3405-038

ORDER NO.	A	B	C	D	E	F	CODE NO.
VTL-BT30	116	91	126	16	15	14	3405-030
VTL-BT40	117	91	136	16	15	14	3405-031
VTL-BT50	149	121	189	25	15	15	3405-032

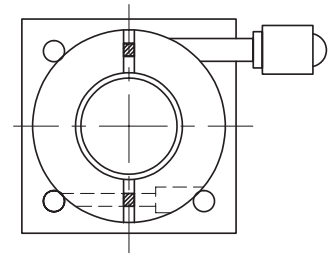
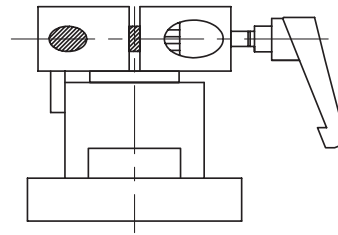


# Tool Holder Locking Fixtures



HSK TYPE

**NEW**



ORDER NO.	STD	WEIGHT (KGS)	CODE NO.
VTL-HSK40	DIN69893 HSK	2.5	3405-046
VTL-HSK50		3.5	3405-047
VTL-HSK63		4.5	3405-048



## Round Tool Locking Device

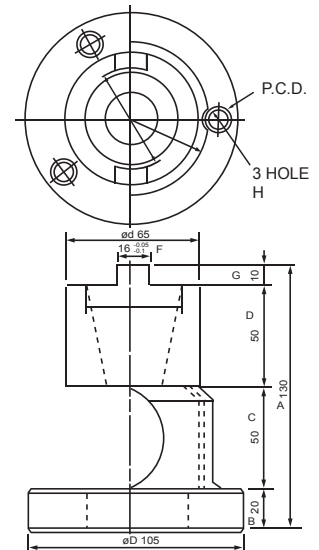
**NEW**



Example

**Feature:**

- Light weight & compact design
- Quick setup time
- For tool holder locking
- Space saving



ORDER NO.	SHANK TAPER	ØD	Ød	3HOLE P.C.D.	H	A	B	C	D	E	F	WEIGHT (kg)	CODE NO.
VTO-BT30	30	90	50	70	ø14x9xø9	108	20	48	30	10	16	1.2	3405-190
VTO-BT40	40	105	65	85	ø14x9xø9	130	20	50	50	10	16	2.2	3405-191
VTO-BT50	50	135	95	115	ø14x9xø9	188	24	82	70	12	25.4	5	3405-192



## Fast Tool Setting Stand

**NEW**

HSK TYPE



LEVER FOR CLAMPING & UNCLAMPING

SETTING INSIDE FOR CLAMPING

※MOVEABLE KEY FOR FLEXIBLE PURPOSE FLEXIBLE

Example

ORDER NO.	STD	WEIGHT (kg)	CODE NO.
VTS-HSK63	DIN69893HSK	10.5	3405-193
VTS-HSK100		11.5	3405-194



# Spindle Taper Wiper



- Easily and quickly for cleaning spindle hole.
- Plastic body, the taper wiper is made of special cotton material, will not damage the spindle.
- The BT & DIN of taper are same

ORDER NO.	TAPER NO.	TOTAL LENGTH	WEIGHT (kg)	CODE NO.
VTW-30	#30	169mm	0.07	3405-060
VTW-40	#40	187mm	0.08	3405-061
VTW-50	#50	241mm	0.02	3405-062



# Spindle Taper Wiper



WITH REPLACE WIPER

- Easily and quickly for cleaning spindle hole.
- Plastic body, the taper wiper is made of special cotton material, will not damage the spindle.
- The BT & DIN of taper are same
- Replaceable Wiper.
- Easy to replace new wipers.
- Included 2 sets x disposable wipers
- ECO Friendly

ORDER NO.	TAPER NO.	TOTAL LENGTH	WEIGHT (kg)	CODE NO.
VTW-30R	#30	162mm	0.08	3405-065
VTW-40R	#40	180mm	0.09	3405-066
VTW-50R	#50	230mm	0.18	3405-067

ORDER NO.	CONTAINS SPARE	WEIGHT (kg)	CODE NO.
VTW-30R-WIPER	20pcs / box	0.01	3405-530
VTW-40R-WIPER	20pcs / box	0.02	3405-531
VTW-50R-WIPER	25pcs / box	0.04	3405-532



# Spindle Taper Wiper



H Type

ORDER NO.	TAPER NO.	TOTAL LENGTH	WEIGHT (kg)	CODE NO.
VTW-40H	HSK40	147mm		3405-073
VTW-50H	HSK50	159mm	0.1	3405-071
VTW-63H	HSK63	167mm	0.12	3405-072
VTW-100H	HSK100	191mm		3405-074





# Tooling Rack Stand



**NEW**

VTT-30

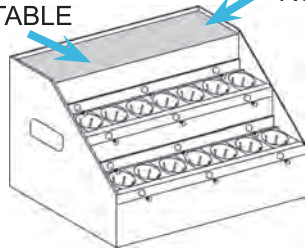


VTT-31



- Compact design
- Clear Storage
- Easy to clean
- Portable design
- Large tooling storage
- VTT-30 with Rubber mate
- Big size variety

VTT-30  
FLAT TABLE RUBBER



LxWxH : 550x430x360 mm  
CAPACITY VTT-30 WITH  
BT-30 16 SHEATH, 1FLAT TABLE  
BT-40 14 SHEATH, 1FLAT TABLE  
BT-50 10 SHEATH, 1FLAT TABLE  
HSK63 12 SHEATH, 1FLAT TABLE

LxWxH : 550x430x360 mm  
VTT-31 WITH  
BT-30 24 SHEATH  
BT-40 21 SHEATH  
BT-50 15 SHEATH  
HSK63 18 SHEATH

ORDER NO.	STD	TOOLING SHEATH CAPACITY	CODE NO.
VTT-30-30	BT-30, DIN69871A	16 pcs/set	3405-211
VTT-30-40	BT-40, DIN69871A	14 pcs/set	3405-212
VTT-30-50	BT-50, DIN69871A	10 pcs/set	3405-213
VTT-30-HSK63	HSK63	12 pcs/set	3405-214
VTT-31-30	BT-30, DIN69871A	24 pcs/set	3405-215
VTT-31-40	BT-40, DIN69871A	21 pcs/set	3405-216
VTT-31-50	BT-50, DIN69871A	15 pcs/set	3405-217
VTT-31-HSK63	HSK63	18 pcs/set	3405-218



# Tooling Cart

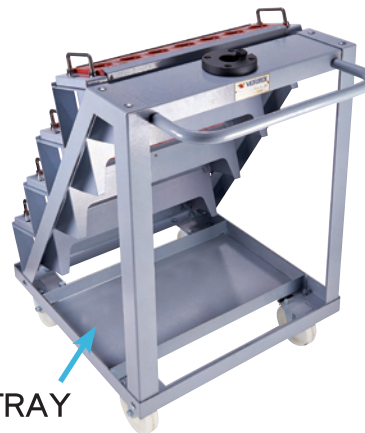
FOR BT30,40,50 / SK30,40,50 / CAT30,40,50 / ISO30,40,50

**NEW**



VTT-21

TOOL LOCKING DEVICE



TOOL TRAY



WITH VTTTR-FOLDING HANDLE TOOLING SHEATH RACK

OVERALL SIZE:626 X 655X 980 mm WEIGHT:43KGS

- LARGE CAPACITY,CAN PUT MORE SHANK TOOLING TROLLEY.
- TAPER ANGLE RACK STAND DESIGN,ERGONOMIC DESIGN,USER FRIENDLY SAVE YOU ENERGY & EASY TO TAKE OUT YOUR TOOL HOLDER.
- CAN TAKE OUT/PUT IN WHOLE SET OF THE NEW TOOLING SHEATH RACK (VTTTR-30/40/50 TR SERIES).CAN FOR SEPARATE USING.
- WITH FOLDING HANDLE CAN SAVE SPACE AND BETTER FREE ACTION MOVEMENT.
- CONVENIENT & SPEED INSTALLATION.
- STABLE & HEAVY DUTY.

ORDER NO.	FOR STD	TOOL LOCKING DEVICE	TOOLING SHEATH CAPACITY	CODE NO.
VTT-21-30	BT-30 DIN 69871A SK30, CAT30, ISO30	BT-30 DIN 69871A SK30, CAT30, ISO30	32PCS/SET	3405-080
VTT-21-40	BT-40 DIN 69871A SK40, CAT40, ISO40	BT-40 DIN 69871A SK40, CAT40, ISO40	28PCS/SET	3405-081
VTT-21-50	BT-50 DIN 69871A SK50, CAT50, ISO50	BT-50 DIN 69871A SK50, CAT50, ISO50	20PCS/SET	3405-082
VTT-21-HSK63	HSK63	HSK63	24PCS/SET	3405-083



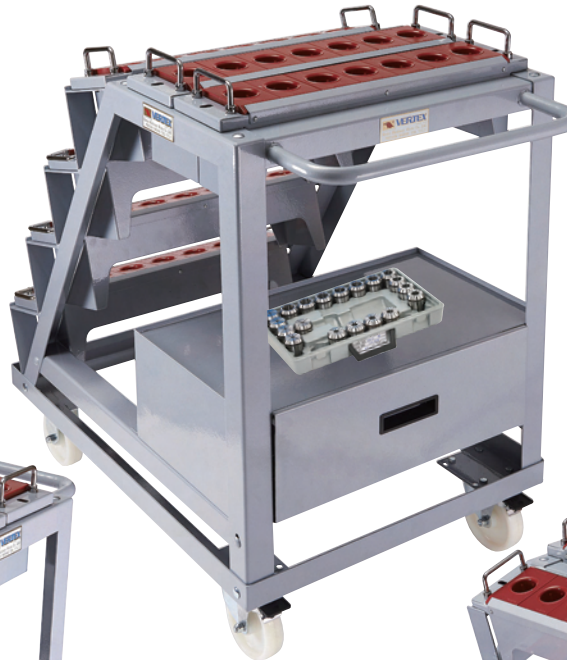
# Tooling Cart



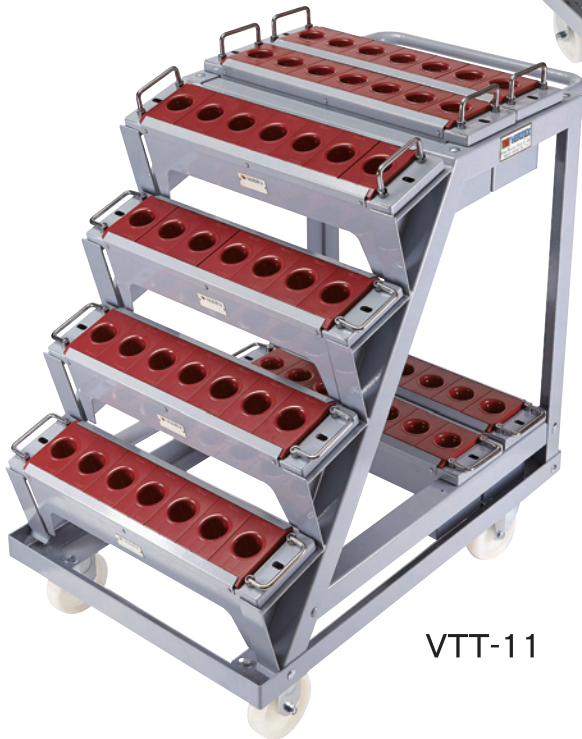
FOR BT30,40,50 / SK30,40,50  
CAT30,40,50 / ISO30,40,50

2 TIMES CAPACITY COMPARE WITH  
For VTT-2 BT-40 IS 28 PCS  
For VTT-11-40 IS 56 PCS

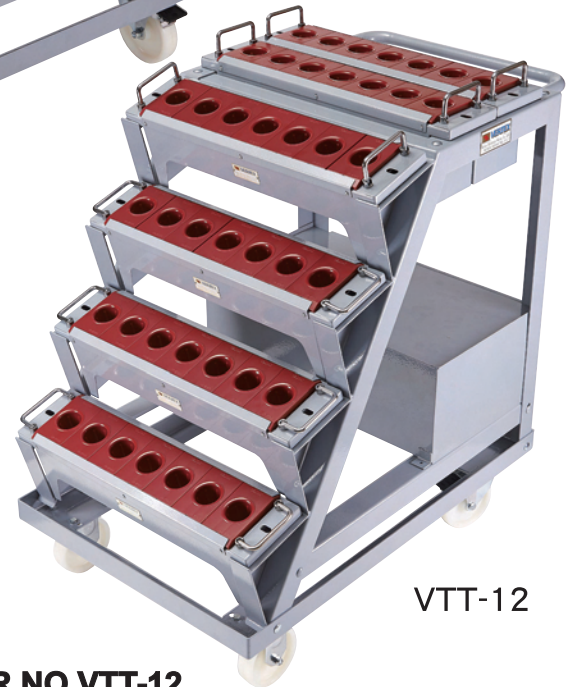
**NEW**



EXAMPLE



VTT-11



VTT-12

TOOLING CART

## ORDER NO. VTT-11

### TOOLING SHEATH TYPE

ORDER NO.	FOR STD	TOOLING SHEATH CAPACITY	CODE NO.
VTT-11-30	BT-30,SK30,CAT30, ISO30 DIN 69871A	64 PCS/SET	3405-230
VTT-11-40	BT-40,SK40,CAT40, ISO40 DIN 69871A	56 PCS/SET	3405-231
VTT-11-50	BT-50,SK50,CAT50, ISO50 DIN 69871A	40 PCS/SET	3405-232
VTT-11-HSK63	HSK63	48 PCS/SET	3405-233

OVERALL SIZE:626 X 960 X 1000MM,WEIGHT:63KGS

## ORDER NO.VTT-12

### TOOLING SHEATH WITH 1 DRAWERS

ORDER NO.	FOR STD	TOOLING SHEATH CAPACITY	CODE NO.
VTT-12-30	BT-30,SK30,CAT30, ISO30 DIN 69871A	48 PCS/SET	3405-240
VTT-12-40	BT-40,SK40,CAT40, ISO40 DIN 69871A	42 PCS/SET	3405-241
VTT-12-50	BT-50,SK50,CAT50, ISO50 DIN 69871A	30 PCS/SET	3405-242
VTT-12-HSK63	HSK63	36 PCS/SET	3405-243

OVERALL SIZE:626 X 960 X 1000MM,WEIGHT:65KGS

- LARGE CAPACITY,CAN PUT MORE SHANK TOOLING TROLLEY.
- TAPER ANGLE RACK STAND DESIGN,ERGONOMIC DESIGN,USER FRIENDLY
- SAVE YOU ENERGY & EASY TO TAKE OUT YOUR TOOL HOLDER.
- CAN TAKE OUT/PUT IN WHOLE SET OF THE NEW TOOLING SHEATH RACK (VTTR-30/40/50 TR SERIES).CAN FOR SEPARATE USING.
- WITH FOLDING HANDLE CAN SAVE SPACE AND BETTER FREE ACTION MOVEMENT. CONVENIENT & SPEED INSTALLATION.
- STABLE & HEAVY DUTY.

DRAWER:LxWxH: 610x360x215 mm