



# ER Spring Collet Chuck System



ER collet system of VERTEX is made of special elastic steel material under excellent heat treatment and precise grinding process, so it has precise accuracy, powerful clamping ability, and is durable. This collet can clamp for a specific standard size and its next size, (Refer to the data sheet on page 2). It can be widely used for boring, milling, drilling and tapping as well as for grinding operation, and is available for all sizes.

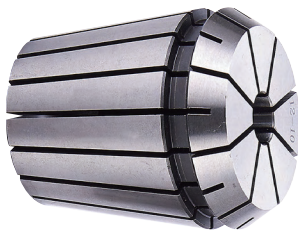
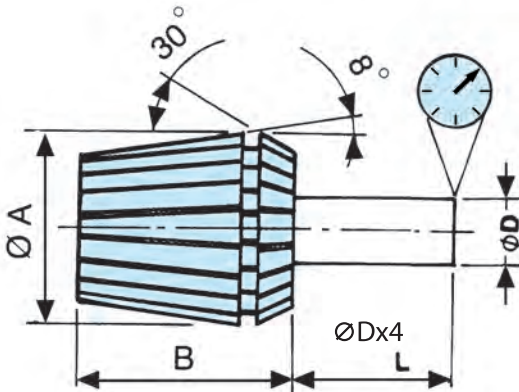
## ER COLLET DIMENSIONS

TYPE	A	B
ER-8	8.5	13.5
ER-11	11.5	18
ER-16	17	27
ER-20	21	31
ER-25	26	35
ER-32	33	40
ER-40	41	46
ER-50	52	60

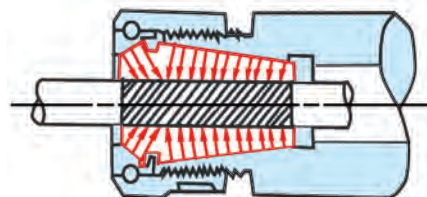
## ACCURACY

L mm	D mm	DIN6499 Standard precision	VERTEX Standard precision	A Grade Optional
ØDx4	1.0-1.4	0.02	0.015	0.01
	1.5-2.9	0.02	0.015	0.01
	3.0-5.9	0.02	0.015	0.01
	6.0-9.9	0.02	0.015	0.01
	10.0-17.9	0.03	0.02	0.01
	18.0-26.9	0.03	0.02	0.01
	27.0-34.9	0.03	0.02	0.01

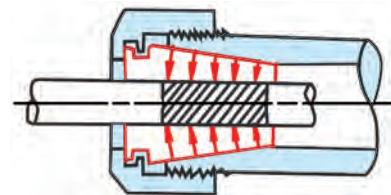
THE HIGH PRECISION OF A GRADE IS AVAILABLE



double-taper chuck



single-taper chuck

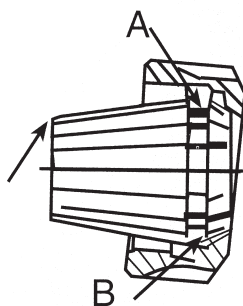


## POWERFUL CLAMPING STRENGTH

The handle of the drill with double-taper chuck is longer than that with single-taper (grinding spring) collet. The clamping strength will be more powerful, if a screw-driver fastened by steel ball is adopted.

### NOTE:

## Mounting instructions for ER collets DIN 6499-A and DIN 6499-B



**A** - Place collet inside nut and rotate the nut to engage with the extractor spiral in collet groove.

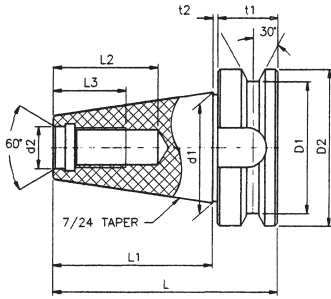
**B** - Only then mount nut and collet together into the collet holder or machine spindle.

Note: Never use a 12-11mm collet to clamp a 12.2mm diameter, but rather use a 13-12mm collet.



**Shank For Machining Center**

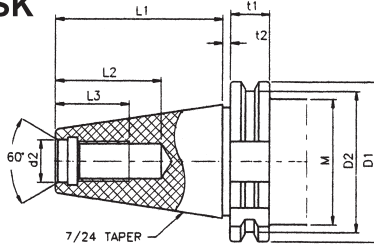
**BT**



**MAS BT SHANK**

SPECIFICATION	D1	D2	t1	t2	L1	L2	L3	L	d1	d2	G
BT30	46	38	20	2	48.4	34	24	70.4	31.75	12.5	M12
BT40**	63	53	25	2	65.4	70	30	92.4	44.45	17	M16
BT50**	100	85	35	3	101.8	90	45	139.8	69.85	25	M24

**SK**

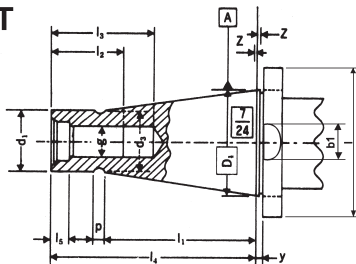


**DIN 69871A SHANK**

SPECIFICATION	D1	D2	t1	t2	L1	L2	L3	d1	d2	M	P	G
SK40	63.55	56.25	15.9	3.2	68.4	42.5	32	44.45	17	44.7	35	M16
SK50	97.5	91.25			101.75	61.5	47	69.85	25	70.1		M24

\*DRAW BAR DIN 69872 A TYPE

**NT**



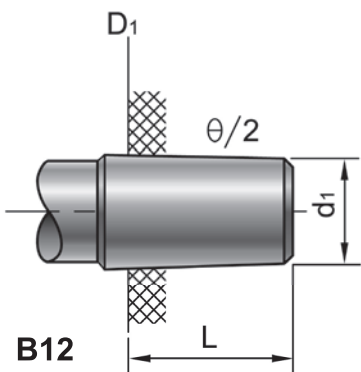
**JIS B6101**

TYPE	D1	Z	d1	d3	l	l1	p	y	g	l5	b1
NT30	31.750	0.4	17.4	16.5	68.4	48.4	3	1.6	M12, 1/2-12NC	6	16.1
NT40	44.450	0.4	25.3	24	93.4	65.4	5	1.6	M16, 5/8-11NC	8	16.1
NT50	69.850	0.4	39.6	38	126.8	101.8	8	3.2	M24, 1"-8NC	11.5	25.7



**Drill Chuck Taper**

**JT**



B12  
B16  
B18

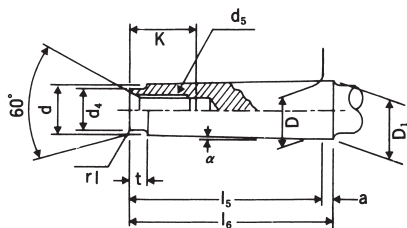
**JACOBS TAPER**

TYPE	θ /2 TAPER	D1	d1	L
JT0		6.35	5.802	11.12
JT1		9.754	8.469	16.669
JT2	2° 19'52"	14.199	12.386	22.225
JT33	1° 49'01"	15.850	14.237	25.400
JT6	1° 29'88"	17.170	15.852	25.400
JT3	1° 31'26"	20.599	18.951	30.956
JT4	1° 29'59"	28.550	26.346	42.069
JT5	1° 29'05"	35.890	33.422	47.625

**DIN 238**

TYPE	θ /2 TAPER	D1	d1	L
B12	1° 25'43"	12.065	11.1	18.5
B16	1° 25'50"	15.733	14.5	24.0
B18	1° 25'50"	17.780	16.2	32.0

**Morse Taper Shank MT**



TYPE	D	a	D1	d	l5	l6	d4	d5
MT.0	9.045	3	9.2	6.4	50	53	6	-
MT.1	12.065	3.5	12.2	9.4	53.5	57	9	M6, 1/4-20NC
MT.2	17.780	5	18.0	14.6	64	69	14	M10, 3/8-16NC
MT.3	23.825	5	24.1	19.8	81	86	19	M12, 1/2-12NC
MT.4	31.267	6.5	31.6	25.9	102.5	109	25	M16, 5/8-11NC
MT.5	44.399	6.5	44.7	37.6	129.5	136	35.7	M20, 3/4-10NC
MT.6	63.348	8	63.8	53.9	182	190	51	M24, 1"-8NC



# ER Spring Collet Chuck System



**STANDARD PRECISION TYPE**

**DIN 6499**



## ER COLLET SET WITH CLAMPING RANGE

TYPE	ER-8			ER-11			ER-16			ER-20			
COMPLET SET	9PCS/SET			7PCS/SET			10PCS/SET			12PCS/SET			
FULL SET	ORDER NO.	CAP. mm Ø	CODE NO.	ORDER NO.	CAP. mm Ø	CODE NO.	ORDER NO.	CAP. mm Ø	CODE NO.	ORDER NO.	CAP. mm Ø	CODE NO.	
	V08000	0.5-5.0	3001-101	V11000	0.5-7.0	3002-101	V16000	0.5-10.0	3003-101	V20000	1-13	3004-101	
INDIVIDUAL UNIT	V08010	1.0-0.5	3001-001	V11010	1.0-0.5	3002-001	V16010	1.0-0.5	3003-001	V20020	2-1	3004-001	
	V08015	1.5-1.0	3001-002	V11020	2.0-1.5	3002-002	V16020	2.0-1.0	3003-002	V20030	3-2	3004-002	
	V08020	2.0-1.5	3001-003	V11030	3.0-2.5	3002-003	V16030	3.0-2.0	3003-003	V20040	4-3	3004-003	
	V08025	2.5-2.0	3001-004	V11040	4.0-3.5	3002-004	V16040	4.0-3.0	3003-004	V20050	5-4	3004-004	
	V08030	3.0-2.5	3001-005	V11050	5.0-4.5	3002-005	V16050	5.0-4.0	3003-005	V20060	6-5	3004-005	
	V08035	3.5-3.0	3001-006	V11060	6.0-5.5	3002-006	V16060	6.0-5.0	3003-006	V20070	7-6	3004-006	
	V08040	4.0-3.5	3001-007	V11070	7.0-6.5	3002-007	V16070	7.0-6.0	3003-007	V20080	8-7	3004-007	
	V08045	4.5-4.0	3001-008	V11015	1.5	3002-008	V16080	8.0-7.0	3003-008	V20090	9-8	3004-008	
	V08050	5.0-4.5	3001-009	V11025	2.5	3002-009	V16090	9.0-8.0	3003-009	V20100	10-9	3004-009	
					V11035	3.5	3002-010	V16100	10.0-9.0	3003-010	V20110	11-10	3004-010
					V11045	4.5	3002-011	V16015	1.5	3003-011	V20120	12-11	3004-011
					V11055	5.5	3002-012	V16025	2.5	3003-012	V20130	13-12	3004-012
					V11065	6.5	3002-013	V16035	3.5	3003-013	V20010	1.0	3004-013
								V16045	4.5	3003-014	V20025	2.5	3004-014
								V16055	5.5	3003-015	V20035	3.5	3004-015
								V16065	6.5	3003-016	V20045	4.5	3004-016
								V16075	7.5	3003-017	V20055	5.5	3004-017
							V16085	8.5	3003-018	V20065	6.5	3004-018	
							V16095	9.5	3003-019	V20075	7.5	3004-019	
										V20085	8.5	3004-020	
										V20095	9.5	3004-021	
										V20105	10.5	3004-022	
										V20115	11.5	3004-023	
										V20125	12.5	3004-024	

Note:  
APPROXIMATE  
FOR EACH

WEIGHT  
(kgs)

ER-8

0.01

ER-11

0.02

ER-16

0.03

ER-20

0.05

ER-25

0.07

ER-32

0.15

ER-40

0.28

ER-50

0.54



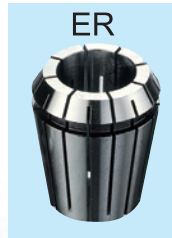
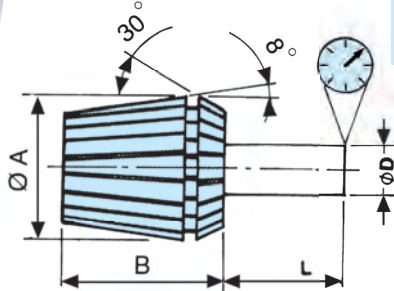
# ER Spring Collet Chuck System



**STANDARD PRECISION TYPE**

ER

DIN 6499



L mm	D mm	DIN6343 Standard precision	VERTEX Standard precision
6	1.0-1.4	0.02	0.015
10	1.5-2.9	0.02	0.015
16	3.0-5.9	0.02	0.015
25	6.0-9.9	0.02	0.015
40	10.0-17.9	0.03	0.02
50	18.0-26.9	0.03	0.02
60	27.0-34.9	0.03	0.02



## ER COLLET SET WITH CLAMPING RANGE

ER-25			ER-32			ER-40			ER-50		
15PCS/SET			18PCS/SET			23PCS/SET			12PCS/SET		
ORDER NO.	CAP. mm Ø	CODE NO.	ORDER NO.	CAP. mm Ø	CODE NO.	ORDER NO.	CAP. mm Ø	CODE NO.	ORDER NO.	CAP. mm Ø	CODE NO.
V25000	1-16	3005-101	V32000	2-20	3006-101	V40000	3-26	3007-101	V50000	10-34	3008-101
V25020	2-1	3005-001	V32030	3-2	3006-001	V40040	4-3	3007-001	V50120	12-10	3008-001
V25030	3-2	3005-002	V32040	4-3	3006-002	V40050	5-4	3007-002	V50140	14-12	3008-002
V25040	4-3	3005-003	V32050	5-4	3006-003	V40060	6-5	3007-003	V50160	16-14	3008-003
V25050	5-4	3005-004	V32060	6-5	3006-004	V40070	7-6	3007-004	V50180	18-16	3008-004
V25060	6-5	3005-005	V32070	7-6	3006-005	V40080	8-7	3007-005	V50200	20-18	3008-005
V25070	7-6	3005-006	V32080	8-7	3006-006	V40090	9-8	3007-006	V50220	22-20	3008-006
V25080	8-7	3005-007	V32090	9-8	3006-007	V40100	10-9	3007-007	V50240	24-22	3008-007
V25090	9-8	3005-008	V32100	10-9	3006-008	V40110	11-10	3007-008	V50260	26-24	3008-008
V25100	10-9	3005-009	V32110	11-10	3006-009	V40120	12-11	3007-009	V50280	28-26	3008-009
V25110	11-10	3005-010	V32120	12-11	3006-010	V40130	13-12	3007-010	V50300	30-28	3008-010
V25120	12-11	3005-011	V32130	13-12	3006-011	V40140	14-13	3007-011	V50320	32-30	3008-011
V25130	13-12	3005-012	V32140	14-13	3006-012	V40150	15-14	3007-012	V50340	34-32	3008-012
V25140	14-13	3005-013	V32150	15-14	3006-013	V40160	16-15	3007-013			
V25150	15-14	3005-014	V32160	16-15	3006-014	V40170	17-16	3007-014			
V25160	16-15	3005-015	V32170	17-16	3006-015	V40180	18-17	3007-015			
V25015	1.5	3005-016	V32180	18-17	3006-016	V40190	19-18	3007-016			
V25025	2.5	3005-017	V32190	19-18	3006-017	V40200	20-19	3007-017			
V25035	3.5	3005-018	V32200	20-19	3006-018	V40210	21-20	3007-018			
V25045	4.5	3005-019	V32025	2.5	3006-019	V40220	22-21	3007-019			
V25055	5.5	3005-020	V32035	3.5	3006-020	V40230	23-22	3007-020			
V25065	6.5	3005-021	V32045	4.5	3006-021	V40240	24-23	3007-021			
V25075	7.5	3005-022	V32055	5.5	3006-022	V40250	25-24	3007-022			
V25085	8.5	3005-023	V32065	6.5	3006-023	V40260	26-25	3007-023			
V25095	9.5	3005-024	V32075	7.5	3006-024	V40115	11.5	3007-024			
V25105	10.5	3005-025	V32085	8.5	3006-025	V40125	12.5	3007-025			
V25115	11.5	3005-026	V32095	9.5	3006-026	V40135	13.5	3007-026			
V25125	12.5	3005-027	V320105	10.5	3006-027	V40145	14.5	3007-027			
V25135	13.5	3005-028	V320115	11.5	3006-028	V40155	15.5	3007-028			
V25145	14.5	3005-029	V320125	12.5	3006-029	V40165	16.5	3007-029			
V25155	15.5	3005-030	V320135	13.5	3006-030	V40175	17.5	3007-030			
			V320145	14.5	3006-031	V40185	18.5	3007-031			
			V320155	15.5	3006-032	V40195	19.5	3007-032			
			V320165	16.5	3006-033	V40205	20.5	3007-033			
			V320175	17.5	3006-034	V40215	21.5	3007-034			
			V320185	18.5	3006-035	V40225	22.5	3007-035			
			V320195	19.5	3006-036	V40235	23.5	3007-036			
						V40245	24.5	3007-037			
						V40255	25.5	3007-038			
						V40265	26.5	3007-039			

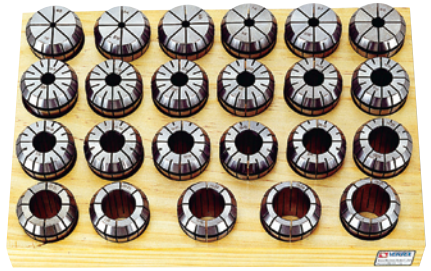
ER COLLET



# ER Spring Collet Chuck System



**SUPER ULTRA PRECISION TYPE**  
**A GRADE**



TYPE	ER-8			ER-11			ER-16			ER-20		
COMPLET SET	9PCS/SET			7PCS/SET			10PCS/SET			12PCS/SET		
FULL SET	ORDER NO.	CAP. mm Ø	CODE NO.	ORDER NO.	CAP. mm Ø	CODE NO.	ORDER NO.	CAP. mm Ø	CODE NO.	ORDER NO.	CAP. mm Ø	CODE NO.
	V08000S	0.5-5.0	3000-001	V11000S	0.5-7.0	3000-002	V16000S	0.5-10.0	3000-003	V20000S	1-13	3000-004
INDIVIDUAL UNIT	V08010S	1.0-0.5	3000-010	V11010S	1.0-0.5	3000-020	V16010S	1.0-0.5	3000-040	V20020S	2-1	3000-060
	V08015S	1.5-1.0	3000-011	V11020S	2.0-1.5	3000-021	V16020S	2.0-1.0	3000-041	V20030S	3-2	3000-061
	V08020S	2.0-1.5	3000-012	V11030S	3.0-2.5	3000-022	V16030S	3.0-2.0	3000-042	V20040S	4-3	3000-062
	V08025S	2.5-2.0	3000-013	V11040S	4.0-3.5	3000-023	V16040S	4.0-3.0	3000-043	V20050S	5-4	3000-063
	V08030S	3.0-2.5	3000-014	V11050S	5.0-4.5	3000-024	V16050S	5.0-4.0	3000-044	V20060S	6-5	3000-064
	V08035S	3.5-3.0	3000-015	V11060S	6.0-5.5	3000-025	V16060S	6.0-5.0	3000-045	V20070S	7-6	3000-065
	V08040S	4.0-3.5	3000-016	V11070S	7.0-6.5	3000-026	V16070S	7.0-6.0	3000-046	V20080S	8-7	3000-066
	V08045S	4.5-4.0	3000-017	V11015S	1.5	3000-027	V16080S	8.0-7.0	3000-047	V20090S	9-8	3000-067
	V08050S	5.0-4.5	3000-018	V11025S	2.5	3000-028	V16090S	9.0-8.0	3000-048	V20100S	10-9	3000-068
				V11035S	3.5	3000-029	V16100S	10.0-9.0	3000-049	V20110S	11-10	3000-069
				V11045S	4.5	3000-030	V16015S	1.5	3000-050	V20120S	12-11	3000-070
				V11055S	5.5	3000-031	V16025S	2.5	3000-051	V20130S	13-12	3000-071
				V11065S	6.5	3000-032	V16035S	3.5	3000-052	V20010S	1.0	3000-072
							V16045S	4.5	3000-053	V20025S	2.5	3000-073
							V16055S	5.5	3000-054	V20035S	3.5	3000-074
							V16065S	6.5	3000-055	V20045S	4.5	3000-075
							V16075S	7.5	3000-056	V20055S	5.5	3000-076
							V16085S	8.5	3000-057	V20065S	6.5	3000-077
							V16095S	9.5	3000-058	V20075S	7.5	3000-078
										V20085S	8.5	3000-079
									V20095S	9.5	3000-080	
									V20105S	10.5	3000-081	
									V20115S	11.5	3000-082	
									V20125S	12.5	3000-083	



# ER Spring Collet Chuck System

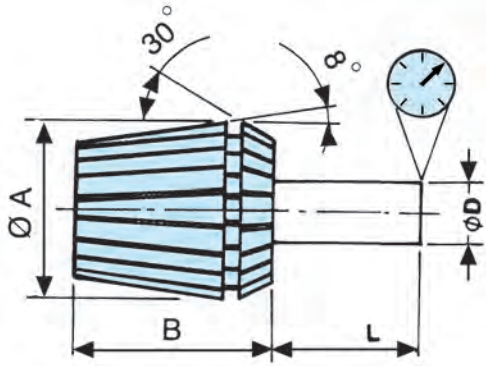


## SUPER ULTRA PRECISION TYPE

## DIMENSIONS

## S GRADE / A GRADE

### Accuracy



TYPE	A	B
ER08	8.5	13.5
ER11	11.5	18
ER16	17	27
ER20	21	31
ER25	26	35
ER32	33	40
ER40	41	46
ER50	52	60

L(mm)	øD(mm)	Ultra Precision(MM)
6	1.0-1.4	0.01
10	1.5-2.9	0.01
16	3.0-5.9	0.01
25	6.0-9.9	0.01
40	10.0-17.9	0.01
50	18.0-26.9	0.01
60	27.0-34.9	0.01



ER-25			ER-32			ER-40			ER-50		
15PCS/SET			18PCS/SET			23PCS/SET			12PCS/SET		
ORDER NO.	CAP. mm Ø	CODE NO.	ORDER NO.	CAP. mm Ø	CODE NO.	ORDER NO.	CAP. mm Ø	CODE NO.	ORDER NO.	CAP. mm Ø	CODE NO.
V25000S	1-16	3000-005	V32000S	2-20	3000-006	V40000S	3-26	3000-007	V50000S	10-34	3000-008
V25020S	2-1	3000-090	V32030S	3-2	3000-110	V40040S	4-3	3000-130	V50120S	12-10	3000-160
V25030S	3-2	3000-091	V32040S	4-3	3000-111	V40050S	5-4	3000-131	V50140S	14-12	3000-161
V25040S	4-3	3000-092	V32050S	5-4	3000-112	V40060S	6-5	3000-132	V50160S	16-14	3000-162
V25050S	5-4	3000-093	V32060S	6-5	3000-113	V40070S	7-6	3000-133	V50180S	18-16	3000-163
V25060S	6-5	3000-094	V32070S	7-6	3000-114	V40080S	8-7	3000-134	V50200S	20-18	3000-164
V25070S	7-6	3000-095	V32080S	8-7	3000-115	V40090S	9-8	3000-135	V50220S	22-20	3000-165
V25080S	8-7	3000-096	V32090S	9-8	3000-116	V40100S	10-9	3000-136	V50240S	24-22	3000-166
V25090S	9-8	3000-097	V32100S	10-9	3000-117	V40110S	11-10	3000-137	V50260S	26-24	3000-167
V25100S	10-9	3000-098	V32110S	11-10	3000-118	V40120S	12-11	3000-138	V50280S	28-26	3000-168
V25110S	11-10	3000-099	V32120S	12-11	3000-119	V40130S	13-12	3000-139	V50300S	30-28	3000-169
V25120S	12-11	3000-100	V32130S	13-12	3000-120	V40140S	14-13	3000-140	V50320S	32-30	3000-170
V25130S	13-12	3000-101	V32140S	14-13	3000-121	V40150S	15-14	3000-141	V50340S	34-32	3000-171
V25140S	14-13	3000-102	V32150S	15-14	3000-122	V40160S	16-15	3000-142			
V25150S	15-14	3000-103	V32160S	16-15	3000-123	V40170S	17-16	3000-143			
V25160S	16-15	3000-104	V32170S	17-16	3000-124	V40180S	18-17	3000-144			
			V32180S	18-17	3000-125	V40190S	19-18	3000-145			
			V32190S	19-18	3000-126	V40200S	20-19	3000-146			
			V32200S	20-19	3000-127	V40210S	21-20	3000-147			
						V40220S	22-21	3000-148			
						V40230S	23-22	3000-149			
						V40240S	24-23	3000-150			
						V40250S	25-24	3000-151			
						V40260S	26-25	3000-152			

ER COLLET



# ER Spring Collet Chuck System

**VERTEX®****ER COLLET SET STANDARD PRECISION TYPE****DIN 6499**

## COLLET KITS STANDARD TYPE

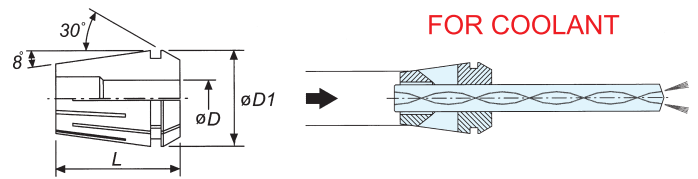
ORDER NO.	TYPE	COLLET SIZE INSIDE DIA.	PCS/SET	KGS/PACKING	CODE NO.
V-08000	ER-8	1+0.5-5mm(1,1.5,2,2.5,3,3.5,4,4.5,5mm)	9PCS	1.065(C)	3001-101
V-11000	ER-11	1-7mm(1,2,3,4,5,6,7mm)	7PCS	1.075(C)	3002-101
V-11013		1+0.5-7mm(1,1.5,2,2.5,3,3.5,4,4.5,5,5.5,6,6.5,7mm)	13PCS	0.3(C)	3002-102
V-16000	ER-16	1-10mm(1,2,3,4,5,6,7,8,9,10mm)	10PCS	0.7(C)	3003-101
V-16008		3-10mm(3,4,5,6,7,8,9,10mm)	8PCS	0.6(C)	3003-102
V-20000	ER-20	2-13mm(2,3,4,5,6,7,8,9,10,11,12,13mm)	12PCS	0.9(C)	3004-101
V-20008		4-13mm(4,5,6,7,8,9,10,11,12,13mm)	10PCS	0.8(C)	3004-102
V-25000	ER-25	2-16mm(2,3,4,5,6,7,8,9,10,11,12,13,14,15,16mm)	15PCS	1.3(W)	3005-101
V-25008		4-16mm(4,5,6,7,8,9,10,11,12,13,14,15,16mm)	13PCS	1.0(W)	3005-102
V-25009		6,8,10,12,16mm	5PCS	1.325(C)	3005-103
V-25010		4,6,8,10,12,14,16mm	7PCS	0.35(C)	3005-104
V-32000	ER-32	3-20mm(3,4,5,6,7,8,9,10,11,12,13,14,15,16,17,18,19,20mm)	18PCS	3.3(P)	3006-101
V-32008		4,5,6,8,10,12,13,15,16,18,20mm	11PCS	2.8(C)	3006-102
V-32009		6,8,10,12,16,20mm	6PCS	0.9(C)	3006-103
V-40000	ER-40	4-26mm(4,5,6,7,8,9,10,11,12,13,14,15,16,17,18,19,20,21,22,23,24,25,26mm)	23PCS	6.5(P)	3007-101
V-40008		4,5,6,8,10,12,13,15,16,18,20,21,22,25,26mm	15PCS	4.2(P)	3007-102
V-40009		6,8,10,12,16,20,25mm	7PCS	2.0(P)	3007-103
V-50000	ER-50	12,14,16,18,20,22,24,26,28,30,32,34mm	12PCS	6.5(P)	3008-101



# ER-Type Coolant Collet

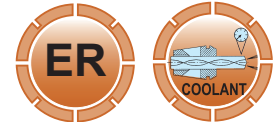


● Collets to DIN6499B



COOLANT COLLETS HAS ROUND SMALL THROUGH HOLE ON THE SLOTS, ONLY WHEN THE DIAMETER IS SMALL. THE REST IS SAME AS NORMAL ER COLLET.

- ER20 Ø4,5 MM
- ER25 Ø4,5,6,7 MM
- ER32 Ø4,5,6,7,8,9 MM
- ER40 Ø4,5,6,7,8,9 MM



ER-16			ER-20			ER-25			ER-32			ER-40		
PCS/SET			PCS/SET			PCS/SET			PCS/SET			PCS/SET		
ORDER NO.	CAP. mm Ø	CODE NO.	ORDER NO.	CAP. mm Ø	CODE NO.	ORDER NO.	CAP. mm Ø	CODE NO.	ORDER NO.	CAP. mm Ø	CODE NO.	ORDER NO.	CAP. mm Ø	CODE NO.
V16040L	4	3000-200	V20040L	4	3000-210	V25040L	4	3000-221	V32040L	4	3000-240	V40040L	4	3000-260
V16050L	5	3000-201	V20050L	5	3000-211	V25050L	5	3000-222	V32050L	5	3000-241	V40050L	5	3000-261
V16060L	6	3000-202	V20060L	6	3000-212	V25060L	6	3000-223	V32060L	6	3000-242	V40060L	6	3000-262
V16070L	7	3000-203	V20070L	7	3000-213	V25070L	7	3000-224	V32070L	7	3000-243	V40070L	7	3000-263
V16080L	8	3000-204	V20080L	8	3000-214	V25080L	8	3000-225	V32080L	8	3000-244	V40080L	8	3000-264
V16090L	9	3000-205	V20090L	9	3000-215	V25090L	9	3000-226	V32090L	9	3000-245	V40090L	9	3000-265
V16100L	10	3000-206	V20100L	10	3000-216	V25100L	10	3000-227	V32100L	10	3000-246	V40100L	10	3000-266
			V20110L	11	3000-217	V25110L	11	3000-228	V32110L	11	3000-247	V40110L	11	3000-267
			V20120L	12	3000-218	V25120L	12	3000-229	V32120L	12	3000-248	V40120L	12	3000-268
			V20130L	13	3000-219	V25130L	13	3000-230	V32130L	13	3000-249	V40130L	13	3000-269
						V25140L	14	3000-231	V32140L	14	3000-250	V40140L	14	3000-270
						V25150L	15	3000-232	V32150L	15	3000-251	V40150L	15	3000-271
						V25160L	16	3000-233	V32160L	16	3000-252	V40160L	16	3000-272
									V32170L	17	3000-253	V40170L	17	3000-273
									V32180L	18	3000-254	V40180L	18	3000-274
									V32190L	19	3000-255	V40190L	19	3000-275
									V32200L	20	3000-256	V40200L	20	3000-276
												V40210L	21	3000-277
												V40220L	22	3000-278
												V40230L	23	3000-279
												V40240L	24	3000-280
												V40250L	25	3000-281
												V40260L	26	3000-282

ER TYPE COLLANT COLLET





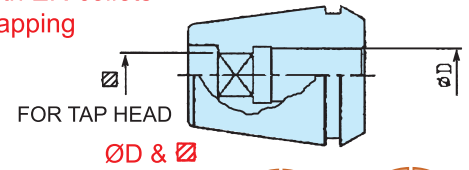
# ER-GB Tap Collets



**NEW**

**ER-TAP**

- Collets to DIN6499B
- Interchangeable with ER-collets
- For synchronized tapping



## DIN/JIS STANDARD TAP SIZE

TYPE	ER-16GB						ER-20GB						
	FULL SET	ORDER NO.	øD mm	□ mm	TAP SIZE		CODE NO.	ORDER NO.	øD mm	□ mm	TAP SIZE		CODE NO.
					DIN	JIS					DIN	JIS	
INDIVIDUAL UNIT	GB160450	4.5	3.4	M6		3000-400	GB200450	4.5	3.4	M6		3000-420	
	GB160500	5	4		M4	3000-401	GB200500	5	4		M4	3000-421	
	GB160550	5.5	4.5		M5	3000-402	GB200550	5.5	4.5		M5	3000-422	
	GB160600	6	4.5		M6 1/4U	3000-403	GB200600	6	4.5		M6 1/4U	3000-423	
	GB160601	6	4.9	M8		3000-404	GB200601	6	4.9	M8		3000-424	
	GB160610	6.1	5		5/16U	3000-405	GB200610	6.1	5		5/16U	3000-425	
	GB160620	6.2	5		M8	3000-406	GB200620	6.2	5		M8	3000-426	
	GB160700	7	5.5	M10	M10 3/8U	3000-407	GB200700	7	5.5	M10	M10 3/8U	3000-427	
	GB160800	8	6.2		7/16U	3000-408	GB200800	8	6.2		7/16U	3000-428	
							GB200850	8.5	6.5		M12	3000-429	
							GB200900	9	7.1	M12	1/2U	3000-430	
							GB201000	10	8			3000-431	

## ISO 529 UNC AMERICA INCH TAP SIZE

TYPE	ER-16GB					ER-20GB				
	FULL SET	ORDER NO.	øD mm	□ mm	ISO529 UNC	CODE NO.	ORDER NO.	øD mm	□ mm	ISO529 UNC
INDIVIDUAL UNIT	GB160451	4.5	3.55	1/4"-20	3000-411	GB200451	4.5	3.55	1/4"-20	3000-435
	GB160630	6.3	5	5/16"-18	3000-412	GB200630	6.3	5	5/16"-18	3000-436
	GB160710	7.1	5.6	3/8"-16	3000-413	GB200710	7.1	5.6	3/8"-16	3000-437
						GB200863	8	6.3	7/16"-14	3000-438
						GB200901	9	7.1	1/2"-13	3000-439

ER-25GB					ER-32GB					ER-40GB				
ORDER NO.	øD mm	□ mm	ISO529 UNC	CODE NO.	ORDER NO.	øD mm	□ mm	ISO529 UNC	CODE NO.	ORDER NO.	øD mm	□ mm	ISO529 UNC	CODE NO.
GB250451	4.5	3.55	1/4"-20	3000-521	GB320451	4.5	3.55	1/4"-20	3000-481					
GB250630	6.3	5	5/16"-18	3000-522	GB320630	6.3	5	5/16"-18	3000-482					
GB250710	7.1	5.6	3/8"-16	3000-523	GB320710	7.1	5.6	3/8"-16	3000-483	GB400710	7.1	5.6	3/8"-16	3000-531
GB250863	8	6.3	7/16"-14	3000-524	GB320863	8	6.3	7/16"-14	3000-484	GB400863	8	6.3	7/16"-14	3000-532
GB250901	9	7.1	1/2"-13	3000-525	GB320901	9	7.1	1/2"-13	3000-485	GB400901	9	7.1	1/2"-13	3000-533
GB251120	11.2	9	9/16"-12	3000-526	GB321120	11.2	9	9/16"-12	3000-486	GB401120	11.2	9	9/16"-12	3000-534
GB251251	12.5	10	5/8"-11	3000-527	GB321251	12.5	10	5/8"-11	3000-487	GB401251	12.5	10	5/8"-11	3000-535



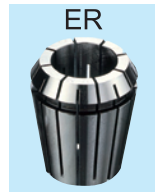
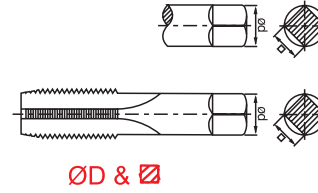
# ER-GB Tap Collets



**NEW**

## ER-TAP

- Collets to DIN6499B
- Interchangeable with ER-collets
- For synchronized tapping



### DIN/JIS STANDARD TAP SIZE

ER-25GB					ER-32GB					ER-40GB							
ORDER NO.	øD mm	□ mm	TAP SIZE		CODE NO.	ORDER NO.	øD mm	□ mm	TAP SIZE		CODE NO.	ORDER NO.	øD mm	□ mm	TAP SIZE		CODE NO.
			DIN	JIS					DIN	JIS					DIN	JIS	
GB250450	4.5	3.4	M6		3000-440	GB320450	4.5	3.4	M6		3000-460						
GB250500	5	4		M4	3000-441	GB320500	5	4		M4	3000-461						
GB250550	5.5	4.5		M5	3000-442	GB320550	5.5	4.5		M5	3000-462						
GB250600	6	4.5		M6 1/4U	3000-443	GB320600	6	4.5		M6 1/4U	3000-463	GB400600	6	4.5		M6 1/4U	3000-490
GB250601	6	4.9	M8		3000-444	GB320601	6	4.9	M8		3000-464	GB400601	6	4.9	M8		3000-491
GB250610	6.1	5		5/16U	3000-445	GB320610	6.1	5		5/16U	3000-465	GB400610	6.1	5		5/16U	3000-492
GB250620	6.2	5		M8	3000-446	GB320620	6.2	5		M8	3000-466	GB400620	6.2	5		M8	3000-493
GB250700	7	5.5	M10	M10 3/8U	3000-447	GB320700	7	5.5	M10	M10 3/8U	3000-467	GB400700	7	5.5	M10	M10 3/8U	3000-494
GB250800	8	6.2		7/16U	3000-448	GB320800	8	6.2		7/16U	3000-468	GB400800	8	6.2		7/16U	3000-495
GB250850	8.5	6.5		M12	3000-449	GB320850	8.5	6.5		M12	3000-469	GB400850	8.5	6.5		M12	3000-496
GB250900	9	7.1	M12	1/2U	3000-450	GB320900	9	7.1	M12	1/2U	3000-470	GB400900	9	7.1	M12	1/2U	3000-497
GB251000	10	8			3000-451	GB321000	10	8			3000-471	GB401000	10	8			3000-498
GB251050	10.5	8		M14 9/16U	3000-452	GB321050	10.5	8		M14 9/16U	3000-472	GB401050	10.5	8		M14 9/16U	3000-499
GB251100	11	9	M14		3000-453	GB321100	11	9	M14		3000-473	GB401100	11	9	M14		3000-500
GB251200	12	9	M16	5/8U	3000-454	GB321200	12	9	M16	5/8U	3000-474	GB401200	12	9	M16	5/8U	3000-501
GB251250	12.5	10		M16	3000-455	GB321250	12.5	10		M16	3000-475	GB401250	12.5	10		M16	3000-502
						GB321400	14	11	M18	M18 3/4U	3000-476	GB401400	14	11	M18	M18 3/4U	3000-503
						GB321500	15	12		M20	3000-477	GB401500	15	12		M20	3000-504
						GB321600	16	12	M20		3000-478	GB401600	16	12	M20		3000-505
						GB321700	17	13		M22 7/8U	3000-479	GB401700	17	13		M22 7/8U	3000-506
												GB401800	18	14.5	M22		3000-507
												GB401900	19	15		M24	3000-508
												GB402000	20	15		M27 1"U	3000-509
												GB402001	20	16	M27		3000-510
												GB402200	22	18	M30		3000-511

ER GB TAP COLLET