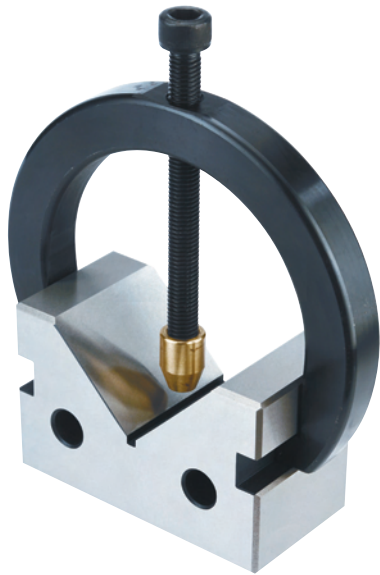
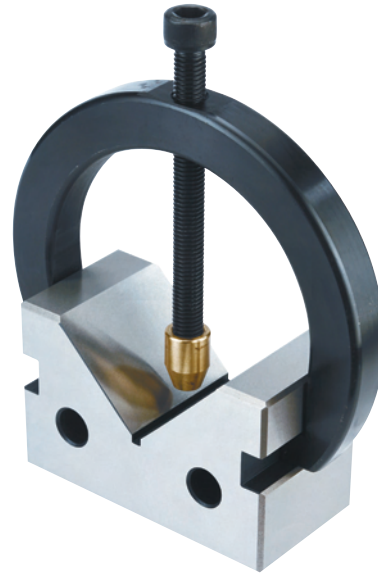




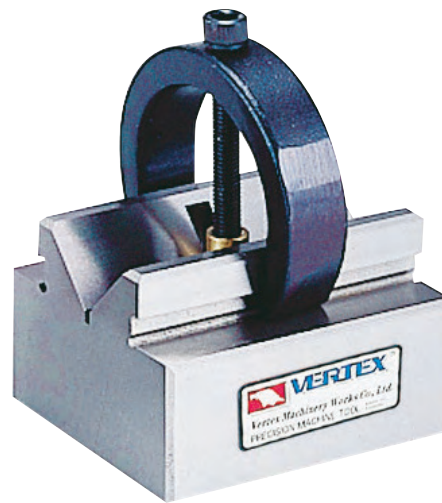
V-Block With Clamp



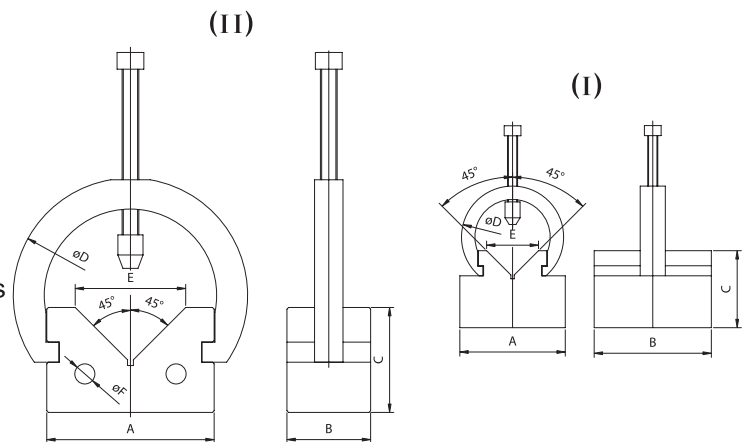
PAIRS
VBC-196
VBC-197



PAIRS
VBC-195



- Two V blocks and two clamps are include in the set.
 - Made of hardened tool steel machined & ground in pairs close tolerances.
 - A precision set for toolmakers & machinists.
- ✘ Not for LABORATORY



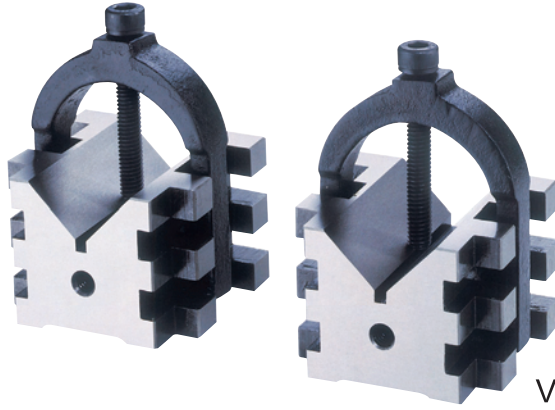
ORDER NO.		A	B	C	D	E	F	N.W. (kgs)	CODE.NO.
VBC-195	I	63	70	46	61	31		3.1	2007-001
VBC-196	II	100	50	63	140	66	12	5.9	2007-002
VBC-197	III	150	64	100	193	110	12	14.7	2007-003



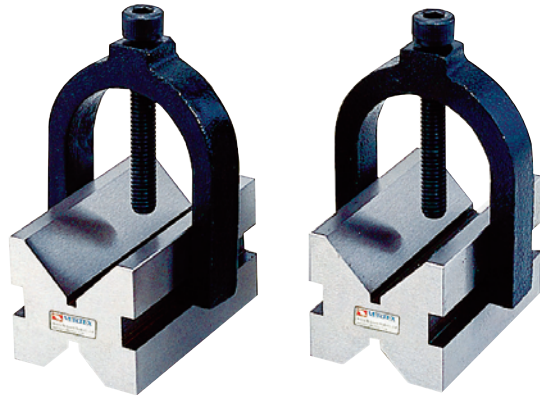
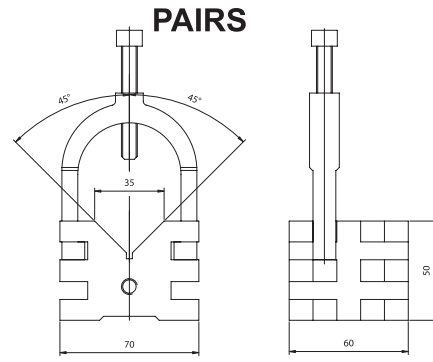
V-Block With Clamp



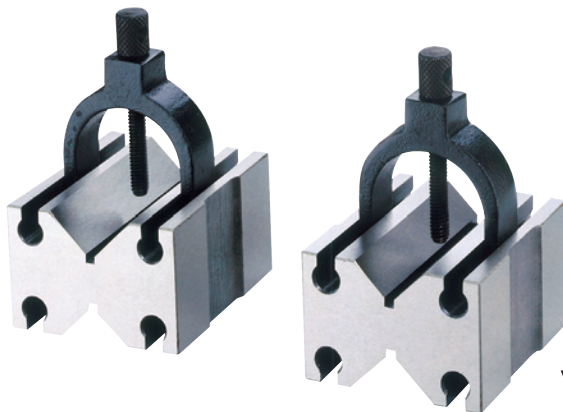
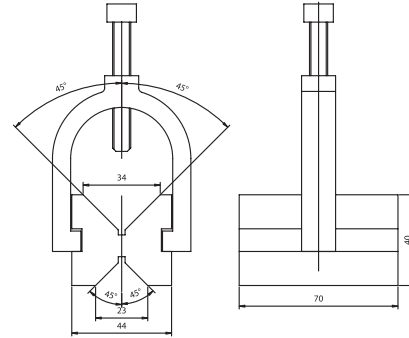
Alloysteel Grounded HRC50°



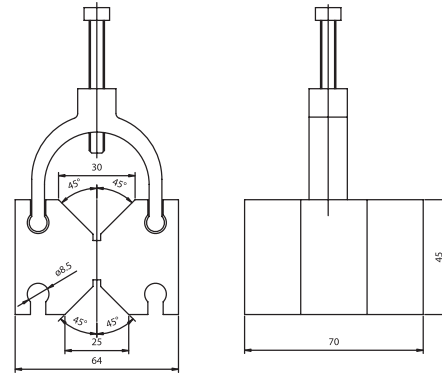
PAIRS
VBC-003



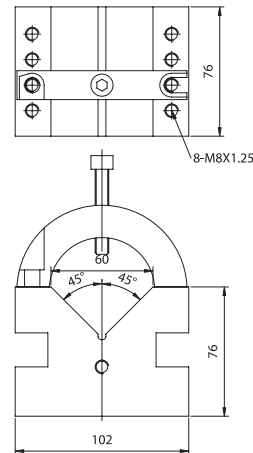
PAIRS
VBC-243



PAIRS
VBC-006



SINGLE
VBC-009



V-BLOCK WITH CLAMP

ORDER NO.	W	H	L	W.OF SMALL VEE	W.OF LARGER VEE	PACKING	G.W. (kgs)	CODE NO.
VBC-003	2.36 60mm	1.86 50mm	2.75 70mm	NON	V35 X V5.5	110x80x110mm	2.4	2007-010
VBC-243	2 3/4 70mm	1 3/4 45mm	1 5/8 42mm	NON	V32 X V3.5	75x80x100mm	1.9	2007-020
VBC-006	2 1/2 64mm	1 3/4 45mm	2 3/4 70mm	V25 X V3.5	V30 X V3.5	110x80x110mm	2.6	2007-030
VBC-009	4 102mm	3 76mm	3 76mm	NON	V59 X V4.5	70x50x110mm	3.9	2007-040



Tangimatic Dresser



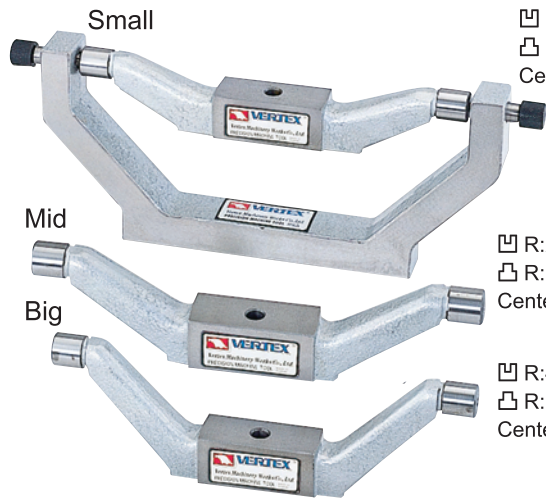
ORDER NO.V-TDA CODE NO.2012-001

WEIGHT: 7 kgs

▣ R:0-20
 ▢ R:0-5
 Center:40.02 mm

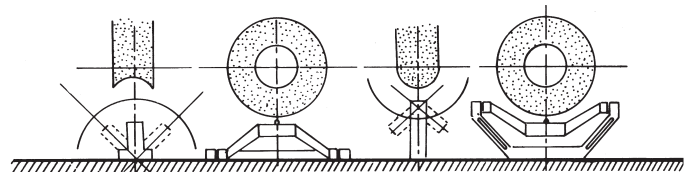
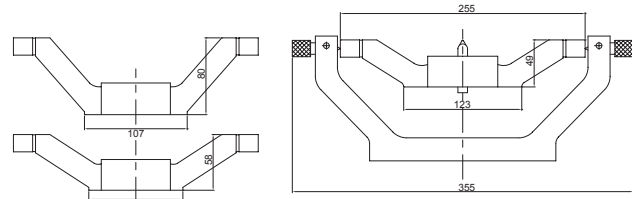
The dresser can be dressing any concave and convex of grinding wheel $\lt; \varnothing 205 \text{ mm}$

Concave R: 0-40R (mm)
 Convex R: 0-90R (mm)
 Max. wheel DIA.: 8" (200 mm)
 Diamond dresser pen 10 mm



▣ R:20-45
 ▢ R:5-20
 Center:53.88 mm

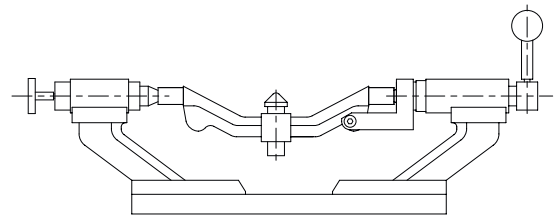
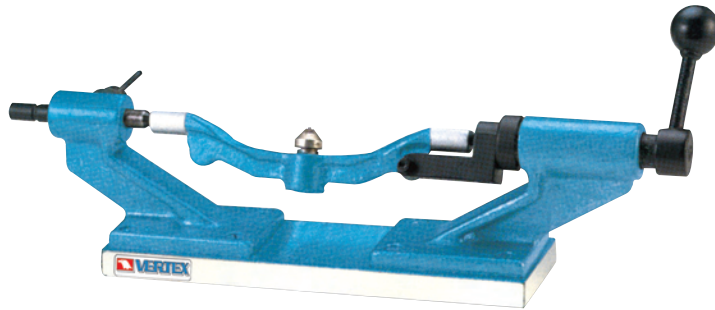
▣ R:45-90
 ▢ R: 20-40
 Center: 71.95 mm



Tangimatic Dresser Handy Type

ORDER NO.V-TDH CODE NO.2012-002

WEIGHT:4.5 kgs



The dresser can be dressing any concave and convex of grinding wheel

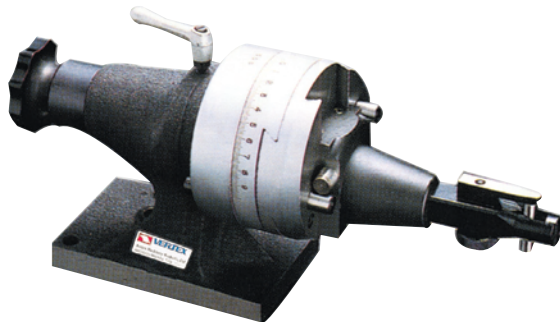
Convex R: 0.2-20 (mm)
 Concave R: 0.2-25 (mm)
 For wheel $\lt; \varnothing 205 \text{ mm}$



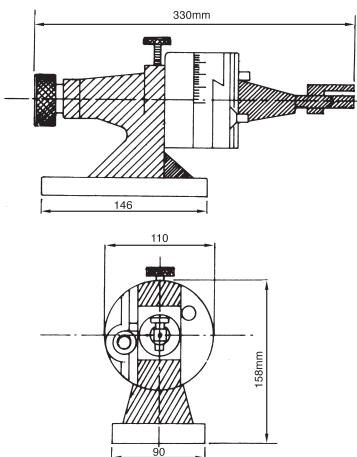
Radius And Angle Dresser

ORDER NO.V-TDB CODE NO.2012-010

WEIGHT:11.5 kgs



Convex dressing range: 0.8R-40R
 Concave dressing range: 0-40R
 Max. wheel dressing diameter: 250 mm
 Max. wheel extending diameter: 375 mm



- Positive setting of the diamond to absolute center with the special gage included with the dresser.
- Simple, fast, accurate radius setting; no height gage or other set-up aids required. Radius is set on the grinder by measuring over the two pins or by inserting a gage block, as shown, for direct reading. Inside or outside radius is determined simply by sliding the dowel pin to the right for concave and to the left for convex.
- 4x90° gaduation in full 360° circle. 6 Minute vernier reading. Chrome plated.
- One push-pull type knob for radius and angle control and for safer and faster operations.
- ACCURACY. Exteremely close tolerances are held in the manufacture of this tool, assured by hardening and precision grinding of all critical parts. Ways are chrome hardened.
- ECONOMY. Set-up and dressing time reduced to a bare minimum due to simplicity.



Universal Wheel Dresser



ORDER NO.V-TDC CODE NO.2012-020

WEIGHT:7.8kgs



The wheel dresser that dresses two angles tangent to a radius in one continuous motion with .0001~0.0002mm accuracy. The wheel dresser with a micrometer feed-0.98"(25mm) travel.

SIMPLE-ELIMINATES HEIGLY SKILLED OPERATORS

Fluidmotion means YOU CAN dress two angles tangent to a radius in one continuous motion-with only one setting. The diamond automatically returns to center position after dressing angles. Thus even a beginner can dress complex forms quickly and accurately. (center height 195mm)

ELIMINATES ELABORATE SETUPS

No need to pre-set diamond, or use any other tool except a micrometer and a simple hex wrench.
No Gage block-Master Gage setting or Block-Parallel Bar-Surface Plate-Height Gage-Dial Indicator.
No movement of dovetails necessary to form angles. The angle is dressed by continuing to push handle in both directions after radius is formed.
No need to use Gibs & V-Ways other than positioning surfaces.

ACCURATE-RAPID, REPAT FORM-DRESSING

Fluidmotion generates clean, precise wheel profiles entirely free of chatter marks. Without fluidmotion a perfect blend of angles and radius is improbable.

PRECISE SHARP CONTOURS-concave or convex, at a full 180 degrees, are obtained consistently with (GUARANTEED) 0.001" accuracy.

CONVEX RANGE-0R-76.2R

CONCAVE RANGE-0.8R-88.9R

ACCURATE...FLUIDMOTION...PRECISE...

HOLD INTERSECTING ANGLES 12 to 15 seconds. This is accomplished by operating upright and handle.
Setting up two angles requires 10 seconds. Setting two angles and radius requires less than 3 minutes.

THE MOST DURABLE DRESSER AVAILABLE

Manufactured from hardened, ground and lapped alloy steels. No wearing surfaces. Swivels on sealed bearings.
This form tangent in one setting-two angles-two radius-one flat.
MAX. Swing distance of diamond cutter.....±14mm
Measuring quasi-pin dia.....ø10
MAX. Wheel dia.....ø200mm
Reading accuracy of turret index.....5'
Feed per division of handle scale.....0.01mm

Calculation Method

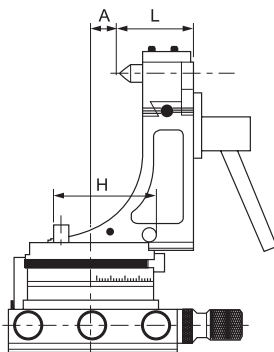
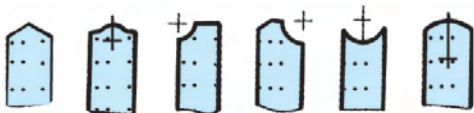
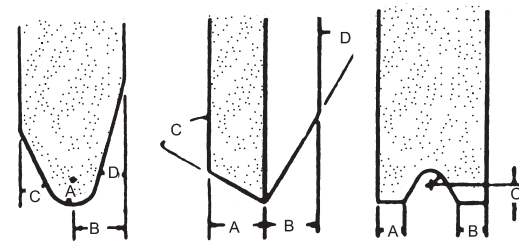
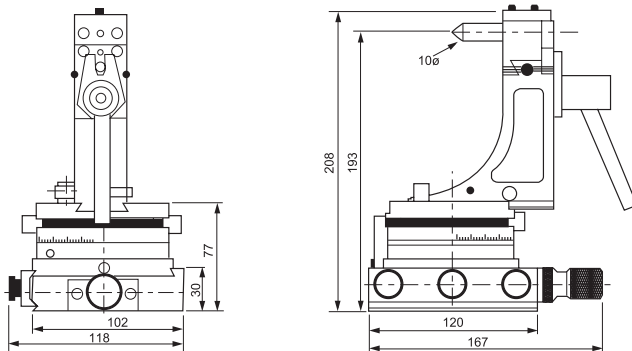
To dress convex arc surface: $H=L + R$

To dress concave arc surface: $H=L +(-R)$

H: Distance between outer generating lines of two locating pins.

R: Radius of the arc surface to be dressed

L: Distance from tip of diamond cutter to base plate



WHEEL DRESSER

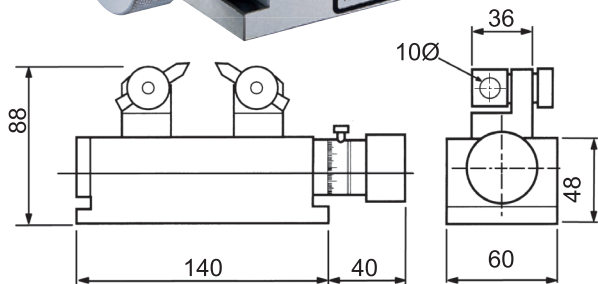


Precision Duplex Dresser



ORDER NO.V-TDF CODE NO.2012-030

WEIGHT:3.7 kgs



FEATURES

PRECISION DUPLEX DRESSER is designed to simultaneously dress both sides of a grinding wheel, precisely and without deformation. It is useful for the thinning of grinding wheels or the dressing of thin wheels. manufactured of tool steel and hardened through out to HRC 60 for life time use.

SPECIFICATIONS:

- Max. width of wheel.....40 mm (1-9/16")
- Max. dressing depth.....40 mm (1-9/16")
- Mini dressing width.....0.2 mm (0.0079")
- Graduation.....0.02 mm (0.0001")

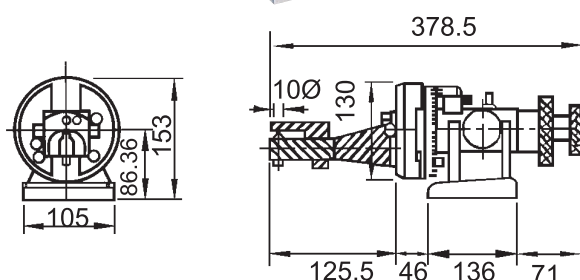
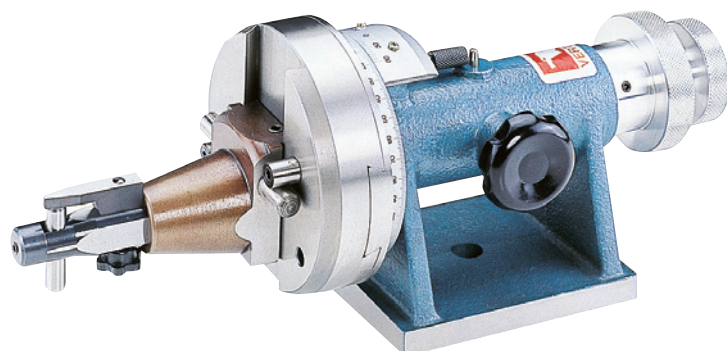
Max.thickness	Min.	Max.	Min
40mm	0.2mm	40mm	0.02mm/div



Radius And Angle Dresser

ORDER NO.V-TDG CODE NO.2012-040

WEIGHT:12 kgs



FEATURES

- 6 minute vernier reading.
- 5-1/2" long x 6-1/2" high.
- Dual purpose knob for drum & angle movement.
- Stop for concave and convex radius.
- Comes with setting gage for diamond tool.
- □ R CONCAVE = 150 mm
- ▽ CONVEX = 60 mm
- MAX. Wheel Dia = 279.4 mm
- Left & Right Stroke = 90 mm

Specifications:

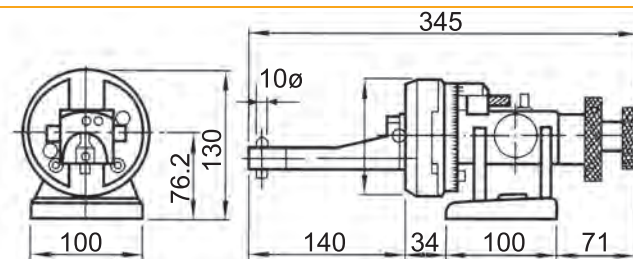
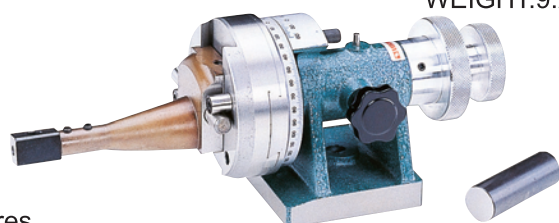
Max. wheel diameter, standard.....	11"
Concave radius with standard diamonds.....	0-2 ¹ / ₄ "
Concave radius with rta-tail diamonds.....	0-2 ¹ / ₄ "
Convex radius.....	0-4"
Tangent travel in either direction.....	1.950"
Center line.....	3.4"



Radius And Angle Dresser

ORDER NO.V-TDE CODE NO.2012-050

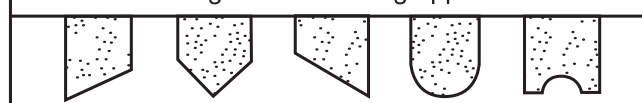
WEIGHT:9.2 kgs



Features

- No height gauge or set-up aids required.
- Radius is set on the grinder by measuring over the two pins or by inserting a gauge block for direct reading.
- Concave radius or Convex radius is determined by using either the left or right hand pins.
- Radius = Set the DRESSER on surface grinder measuring by the 2 pins and / or inserting gauge block for direct reading.

Grinding wheel dressing application



- □ R CONCAVE = 100 mm
- ▽ CONVEX = 45 mm
- Left & Right Stroke = 65 mm

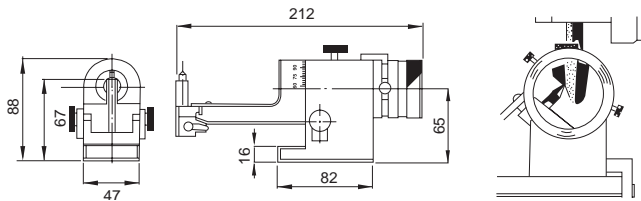
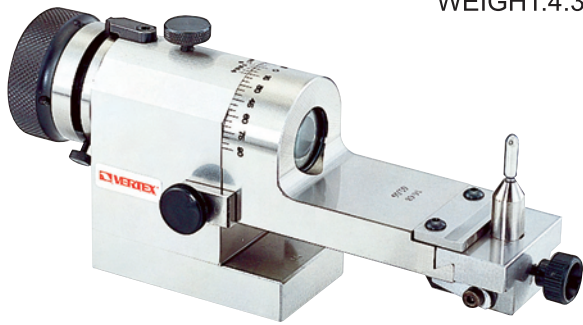


Optical Radius Angle Dresser



ORDER NO.V-TDT CODE NO.2012-060

WEIGHT:4.3 kgs



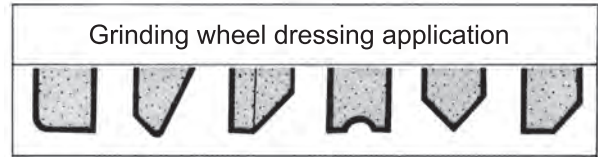
FEATURES

Universal Wheel Dresser is Adoptable on Surface grinder and universal tool grinder for dressing grinding wheel into various cross sections of flat or curved shapes.

By "SIGHTING" the diamond point through the lens, radius and angles can easily be made perfectly tangent Visually Even with diamonds. Likewise radius can be blended together with most unbelievable accuracy.

SPECIFICATION

Center height.....65 mm
 Max. wheel diameter.....200 mm
 Max. convex radius.....10 mm
 Max. concave radius.....25.4 mm
 Dressing angle.....95°-0°-95°
 Tangential travel.....Appo x 22.5 mm



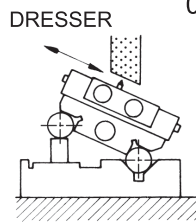
WHEEL DRESSER



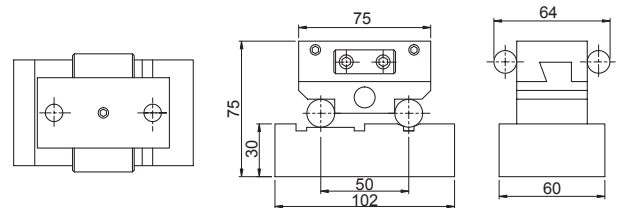
Matco Sine Dresser

ORDER NO.VP-50 CODE NO.2012-070

WEIGHT:2.5 kgs



- This fine precision-made unit dresses grinding wheels to any angle from 0°-60° degrees with new smoothness and accuracy.
- The cross feed up to 50mm, center distance 0.01 mm, Sine angle absolutely accurate.



SPECIFICATION

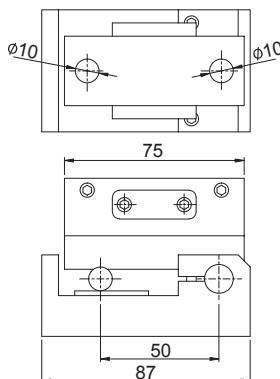
BLOCK CENTER DISTANCE	CENTER TOLERANCE	MAX CROSS FEED
50	±0.01	50



Matco Sine Dresser

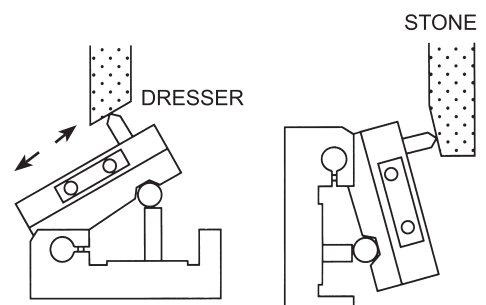
ORDER NO.V-50D CODE NO.2012-080

WEIGHT:1.6 kgs



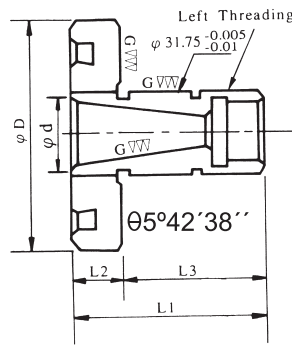
This fine precision-made unit dresses grinding wheels to any angle from 0°-60° degrees with new smoothness and accuracy.

The cross feed up to 50 mm, center distance 0.01 mm, Sine angle absolutely accurate.





Grinding Wheel Flange



Unit: mm

ORDER NO.	ØD	Ød	L1	L2	L3	Brand Mark	WEIGHT (kg)	CODE NO.
FKT-250	78	25.7+0/-0.05	40	13	27	KENT PROTH	0.8	2013-010
FTA-350	75	25.4+0/-0.05	40	13	34	TATUNG	1	2013-011

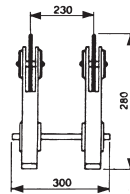
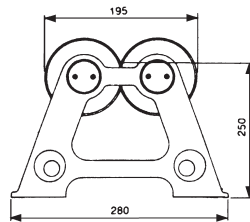
GRINDING WHEEL



Wheel Balancing Stand

ORDER NO. WBS-300 CODE NO. 2014-001

WEIGHT: 12.5 kgs



MAX. WHEEL DIAMETER ALLOWED Ø 500mm

The stand is specifically designed to improve accuracy and longer life for grinding. It is finished with cast iron and fine through hardened to HRC 55°.



Level Balancing Stand

ORDER NO. LBS-100

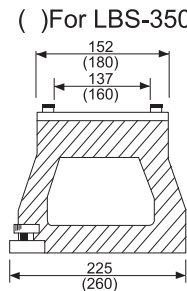
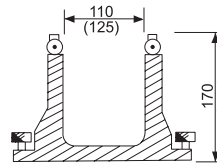
CODE NO. 2014-010

WEIGHT: 8.8 kgs

ORDER NO. LBS-350

CODE NO. 2014-011

WEIGHT: 15.1 kgs



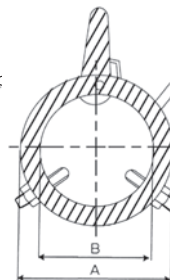
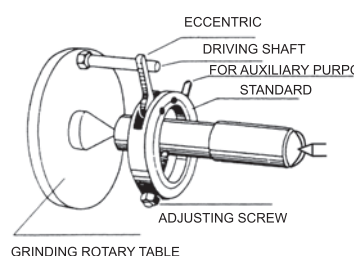
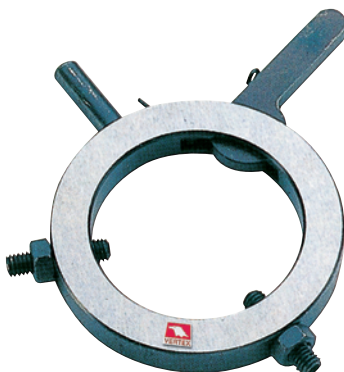
This machine encloses minute leveling instrument.

The adjustment of horizontal enable rapidly and accurately.

MAX. WHEEL DIAMETER ALLOWED Ø200 mm, Ø350 mm



Driving Carrier



ORDER NO	CAPACITY	A	B	WEIGHT (kg)	CODE NO.
VDC-13	Ø6~Ø14	36	18	0.1	2014-020
VDC-22	Ø13~Ø24	48	28	0.2	2014-021
VDC-30	Ø20~Ø33	58	38	0.2	2014-022
VDC-40	Ø31~Ø42	68	48	0.2	2014-023
VDC-50	Ø36~Ø50	78	58	0.3	2014-024
VDC-60	Ø40~Ø62	89	68	0.3	2014-025
VDC-80	Ø60~Ø80	119	88	0.6	2014-026
VDC-100	Ø80~Ø100	140	109	0.7	2014-027

FEATURES:

- SUITABLE FOR GRINDING OF SHAFTS.
- EASY ATTACH AND DETACH BY ONE HAND.

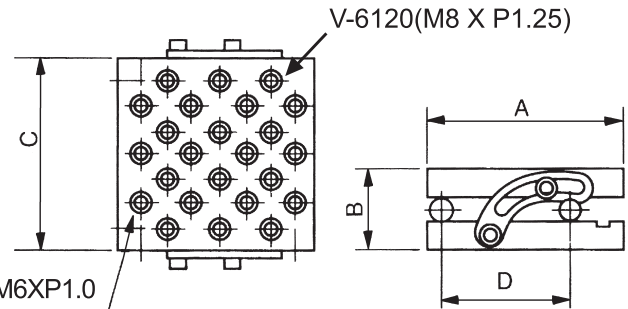
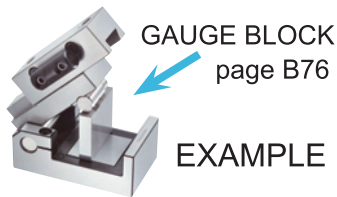


Sine Plates



Design by the principles of SINE, angle grinding can be done well. High precision of parallelism within 0.002 mm and squareness within 0.005 mm. Setup and dressing time reduced to a bare minimum due to simplicity. (ANGLE 0° - 46°)

- Made of quality steel, hardened to HRC 55° - 56°
- Two hardened and ground side rails and one.
- Locking strap included.



ORDER NO.	A	B	C	D	N.W (kgs)	CODE NO.
V-47	98	66	177	75	8.4	2015-001
V-66	150	62	150	100	9.4	2015-002
V-6120	147	65	300	100	19.8	2015-003



Compound Sine Plate



Made of quality steel, hardened to HRC 55°-62°, angles 0°~60° capacity.

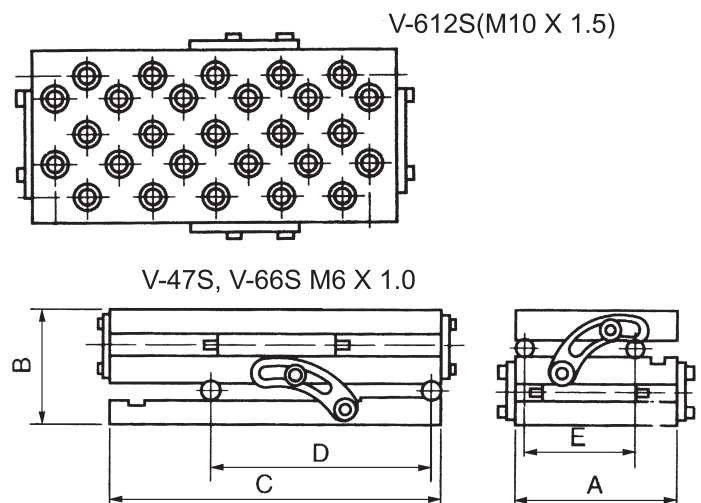
Minute angle step 0.2 built into the front gauge block roll eliminates steps in base plate.

Two end rails and one locking strap included

Tapped holes on the top.

Center distance of tools with 0.005 mm(0.0001")

V-612S within 0.008 mm(0.0003")



ORDER NO.	A	B	C	D	E	N.W (kgs)	CODE NO.
V-47S	100	100	175	100	75	9.9	2015-010
V-66S	150	150	150	100	100	12.4	2015-011
V-612S	150	150	300	200	100	23.7	2015-012

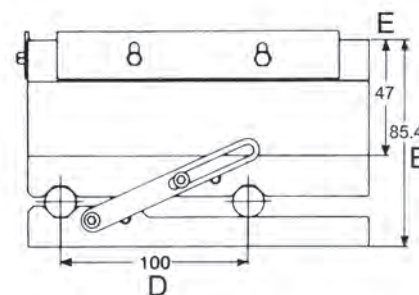
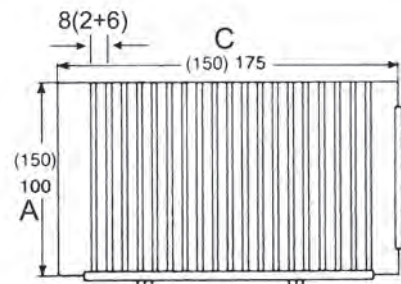


Magnetic Sine Plate



650 GAUSS

MAGNETIC SINE PLATES with a permanent magnetic, never lose its strong power by press down a screw based on the plate and regain the original after work.



MAGNETIC PLATE

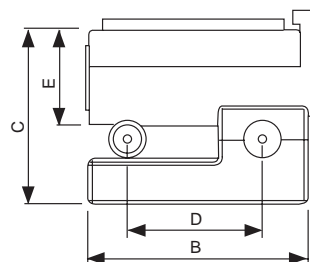
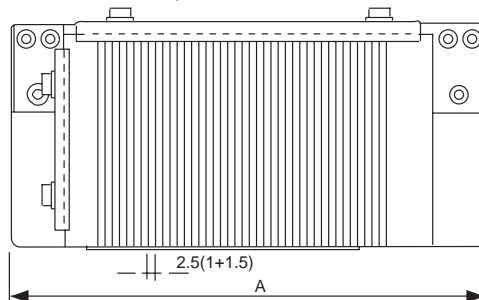
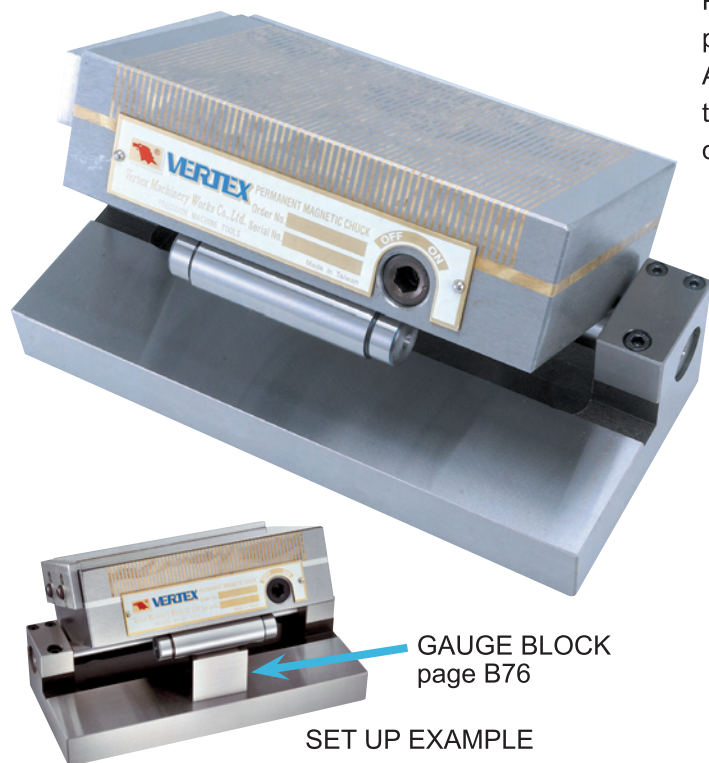
ORDER NO.	A	B	C	D	E	ANGLE	N.W (kgs)	CODE NO.
V-47M	100	85.4	175	75	47	0°~45°	11.3	2015-020
V-66M	150	85.4	150	100	47	0°~45°	15.6	2015-021
V-612M	150	85.4	300	100	47	0°~45°	27	2015-022



Magnetic Sine Plate With Fine Pole

700 GAUSS

Permanent magnetic chuck. Removable handle for positive on/off control, side rails, end rails all included. All have 200 minute angle steps with 0.005 mm(0.0002") tolerance in squareness, parallelism and roll center distances. The chuck of pole is 1+1.5



ORDER NO.	A	B	C	D	E	P	ANGLE	N.W (kgs)	CODE NO.
V-47MF	225	102	87	75	47	2.5 (1+1.5)	0°~46°	13.1	2015-030
V-66MF	200	152	87	100	47			16.5	2015-031
V-612MF	366	152	87	100	47			30.3	2015-032