

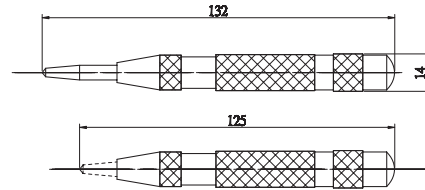


Auto Center Punch

ORDER NO.VACP-1 CODE NO.1019-020



L: 120MM



Automatic point marker is the best tool final the central point before punching. It's operated to aim at the central line and be pressed downward; the central point will appear. The size of the point can be adjusted by the pressure lid, no need to use hammers. The force from spring pressure.

- Also can use to break car windows
- N.W. : 0.07kg



Draw Bar



- For milling machine

ORDER NO.	DRAW BAR THREAD	LENGTH mm		WEIGHT (kg)	CODE NO.
		STEPS (S) TYPE	VARIABLE (A) SPEED		
VDR-R8-S	7/16-20UNF	518	598	0.5	1020-001
VDR-R8-A				0.8	1020-002
VDR-NT302-S	1/2-12UNF	555	635	0.6	1020-003
VDR-NT302-A				0.9	1020-004
VDR-NT303-A	1/2-13UNF	555	635	0.9	1020-006
VDR-NT30M-S	M12x1.75P	555	635	0.6	1020-007
VDR-NT30M-A				0.9	1020-008
VDR-NT40I-S	5/8-11UNF	545	630	1	1020-009
VDR-NT40I-A				1.3	1020-010
VDR-NT40M-S	M16x2.0P	545	630	1	1020-011
VDR-NT40M-A				1.3	1020-012



Clock Spring for Milling Machine



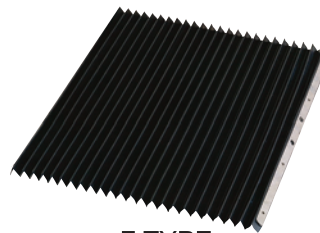
ORDER NO.	LENGTH (mm)	WEIGHT (kg)	CODE NO.
VSP-R8	Ø43 x 0.6 x 1300L x 25	0.16	1020-101
VSP-NT30	Ø43 x 0.6 x 1300L x 25	0.16	1020-102
VSP-NT40	Ø45 x 0.7 x 1300L x 30	0.222	1020-103



Expandable Machine Guard Cover



B TYPE



F TYPE

F IS FOR FRONT (X)
B IS FOR BACK (Y)
(MILLING MACHINE)
B SERIES RUBBER IS PLAIN TYPE.

ORDER NO.	WxL	SUITFUL MILLING SINE	WEIGHT (kg)	CODE NO.
VGC-3833F	380x330	1.5#	0.3	1021-001
VGC-3860F	380x600	1.6# 1.7#	0.6	1021-002
VGC-4550F	450x500	1.6#	0.7	1021-003
VGC-3775B	370x750	1.5#	0.7	1021-004
VGC-4585B	450x850	1.6# 1.7#	1.1	1021-005
VGC-6085B	600x850	2.0#	2	1021-006



5C. C32. OZ25 Collet Rack



ORDER NO.VMS-5 CODE NO.1021-050



SIZE: 220x110x6 mm
 MATERIAL:PLASTIC
 G.W.: 0.2 kgs
 5C, C32, OZ25
 ER32, TC312 COLLET RACK

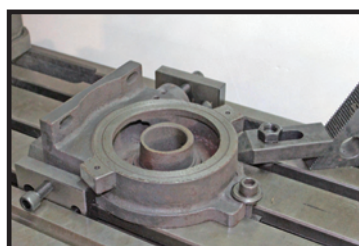
COLLET RACK



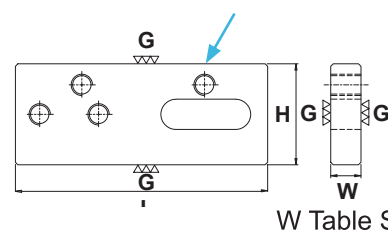
Table Slot Plate



EXAMPLE



Screw M12x1.75P For setting



Material:SS41C
 Hardness: HRC 50°~55°

- W For Table Slot
- Clamp Support Stopper
- For Flexible Machine Table Fixing

ORDER NO.	WxHxL (mm)	WEIGHT (kgs)	CODE NO.
TP-90-18	18x60x90	0.76	1021-070
TP-90-20	20x60x90	0.85	1021-071
TP-90-22	22x60x90	0.9	1021-072
TP-90-24	24x60x90	1	1021-073
TP-150-18	18x60x150	1.3	1021-074
TP-150-20	20x60x150	1.4	1021-075
TP-150-22	22x60x150	1.6	1021-076
TP-150-24	24x60x150	1.8	1021-077



Parts Storage

COLOR: RED, BLUE, YELLOW



- Easy parts storage
- Organized

ORDER NO.	SIZE	PACKED	EACH WEIGHT (kg)	CODE NO.
VHB-1218	120Wx180Dx80H mm	60 PCS/CASE	8.6	1021-100
VHB-1525	150Wx250Dx120H mm	36 PCS/CASE	9.6	1021-101
VHB-2035	200Wx350Dx150H mm	18 PCS/CASE	0.585	1021-102
VHB-2045	200Wx450Dx177H mm	12 PCS/CASE	0.8	1021-103
VHB-3045	300Wx450Dx177H mm	8 PCS/CASE	1.8825	1021-104



Right Angle Head



VRA-NT40



VRA-R8

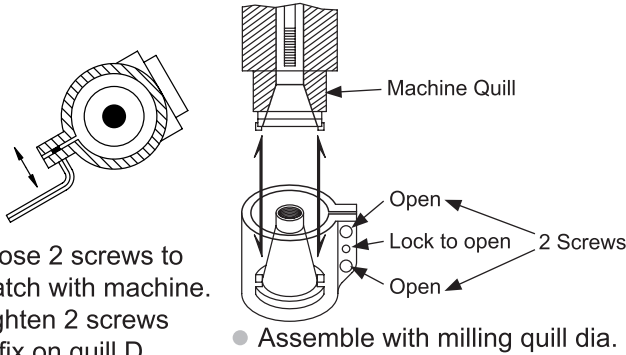


VRA-TYPE

- Used on Vertical Milling Machine to make horizontal work.
- Rigidity constructed suitable for horizontal cutting.
- The clamping bushing to suit milling machine.
- Maximum spindle speed allowed right angle. 2000 R.P.M.

✳Please notify the quill dia. when ordering

ORDER NO.	SUITABLE MILLING HEAD QUILL DIAMETER(mm)	C	D	WEIGHT (kgs)	CODE NO.
VRA-R8	85.725~86	175	138	12.5	1008-001
VRA-NT 30	85.725~86	175	160	13	1008-002
VRA-NT 40	85.725, 100, 105, 110, 115	183	190	18	1008-003



- Loose 2 screws to match with machine.
- Tighten 2 screws to fix on quill D.

● Assemble with milling quill dia.

ARBOR FOR CUTTER INCH SIZE

INCH

PAGE C45

ORDER NO.	THREAD	L	l
R8-SCA1"	7/16-20 UNF	86	62
NT30-SCA1"	1/2-12 NC	84	60
NT40-SCA1"	5/8-11 NC	88	65

ARBOR FOR CUTTER METRIC SIZE

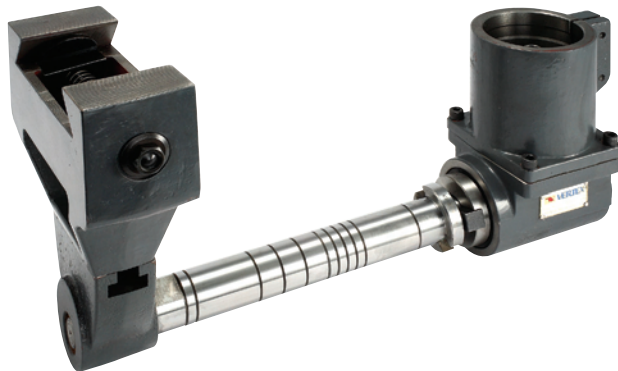
METRIC

PAGE C45

ORDER NO.	THREAD	L	l
R8-SCB22	7/16-20 UNF	86	62
NT30-SCB27	M12 x 1.75P	84	60
NT40-SCB27	M16 x 2.0P	88	65



Horizontal Milling Attachment

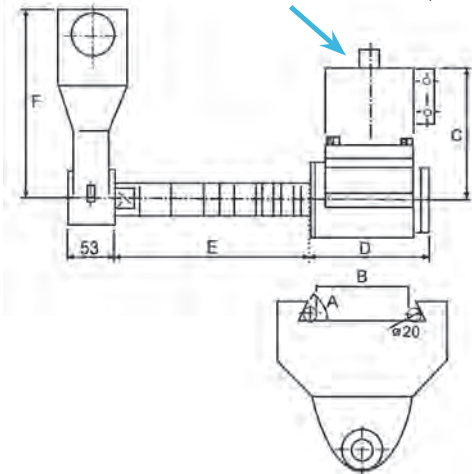


- Special dovetail degree, also can supply.....please notify.
- VHA-TYPE including right angle head, long horizontal arbor and breaker. VHA-R-8-27mm VHA-NT-30/NT-40-27mm for The mm size, for inch size are same 25.4mm (1")
- The quill diameter is same as VRA-Type
- Maximum spindle speed allowed right angle. 2000 R.P.M.

Horizontal Milling Arbor Support

TYPE	SPEC.	SUITABLE M/C RAM DOVETAIL WIDTH	WEIGHT(kgs)
A 50°	B	140mm~170mm	25.7
A 55°	B	140mm~170mm	26.5
A 60°	B	140mm~170mm	30.8

ASSEMBLED WITH MILLING QUILL DIA.



- Benefit: convert your vertical mill to a horizontal mill. Designed to simplify right angle work by reducing the need for special tooling and complex fixtures, gains your efficiency, save your time and money.

Unit:mm

ORDER NO.	C	D	E	F	CODE NO.
VHA-R-8	175	138	255	233	1008-010
VHA-NT-30	175	160	270	233	1008-011
VHA-NT-40	183	190	270	233	1008-012



NEW



500S Type series
VPF-500X
VPF-500Y
VPF-500Z



For Longitudinal X Axis



For Cross Y Axis



For Vertical Z Axis

The vertical milling machines the same as bridgeport type, lugun type, kondia type without gearbox table feed device. All type milling/drilling machines high torque. Easy installation. Automatic shutoff. Superior thermal characteristic. Smooth operations. Safety option. Trouble-free performance. super power.

The max. torque is 650 in/lb

- New super power design and construction materials.
- Top quality. Long life span designed.
- All type are 110V voltage only.

ORDER NO.	VOLTAGE	Speed Range	Rapid Speed	Max. Torque	LxWxH	G.W.(kgs)	CODE NO.
VPF-500 X	110V ONLY	4-160rpm	200rpm	650 in/lb	290x200x320mm	6.3	1009-001A
VPF-500 Y						6.7	1009-002A
VPF-500 Z						6.9	1009-003A
VPF-99 X	110V	0-165rpm	240rpm	450 in/lb	290x200x315mm	6.2	1009-005

VPF-99 X

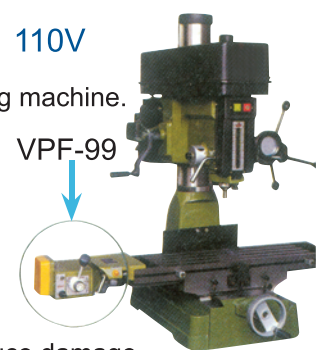


Features

- Application: the VERTEX power table feed for Drill/Milling machine.
- Easy to install, no modification needed.
- Highest quality design and construction.
- Circuit panel is designed for easy replacement with insert type connectors.
- Assy-gear clutch has limit for twisting: When power feed is working and accepting tremendous obstacle, the assy-gear clutch will automatically become natural turning in order to reduce damage.

110V

VPF-99



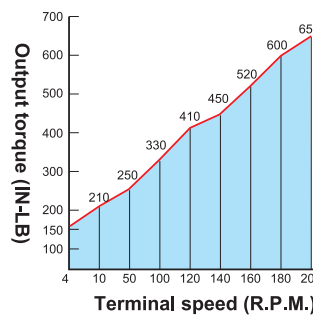
OPTIONAL

Transformer 110V→220V

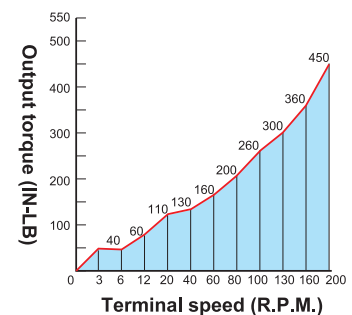
ORDER NO. VPF-TF
 CODE NO. 1009-006

TR1: Output TR2:2 Output
 Output: 110V 50/60Hz,
 power supply: 50/60Hz, 1-phase
 220, 240, 380, 415, 440V

THIS TRANSFORMER IS FOR VPF-TYPE USE ONLY.

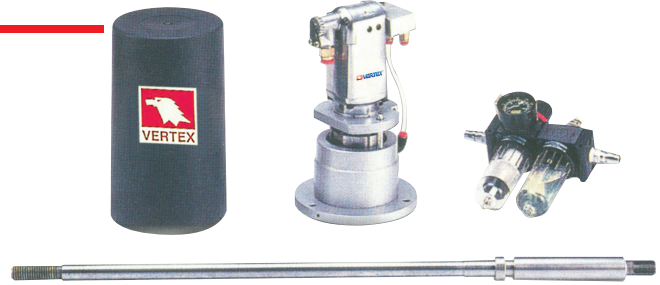


VPF-500



VPF-99

Air Power Drawbar



Standard equipment

- Power motor
 - Control box
 - Air filter and lubricant
 - Drawbar
 - Mounting hardware
-
- It will increase your productivity with more profits as cutter replacement needs only 3 sec and the speed of replacement is more than 10 times to compare with traditional cutter replacement.

Air power drawbar PD-150, PD-200

- It can be installed in any kind of machine, of which the main spindle are R-8, NT #30, #40 or #50.
- It is convenient for the machinist who wants increased production and performance from his machine.
- It is suitable for NC and general milling machines.
- This device is easily installed needs only 5 seconds to change the cutting tool.
- Main power is air compression.
- This device is designed with safety device controlled with solenoid valve. The power drawbar cannot be operated while machine is running.

VPF-500Z
※INSTALL EXAMPLE

ORDER NO.	SPEED	TORQUE	AIR PRESSURE	VOLTAGE FOR MAGNETIC VALVE	G.W. kgs	PACKING LxWxH	CODE NO.	
PD-150 FOR	R-8	3000 R.P.M.	150 ft-lb	90 psi 6.3 kg/cm ²	AC 110V OR 220V DC 24V	9.8	650x300x200	1010-001
	NT-30							1010-002
	NT-40							1010-003
PD-200 FOR	NT-50	3000 R.P.M.	200 ft-lb	90 psi 6.3 kg/cm ²	AC 110V OR 220V DC 24V	11	650x300x200	1010-004

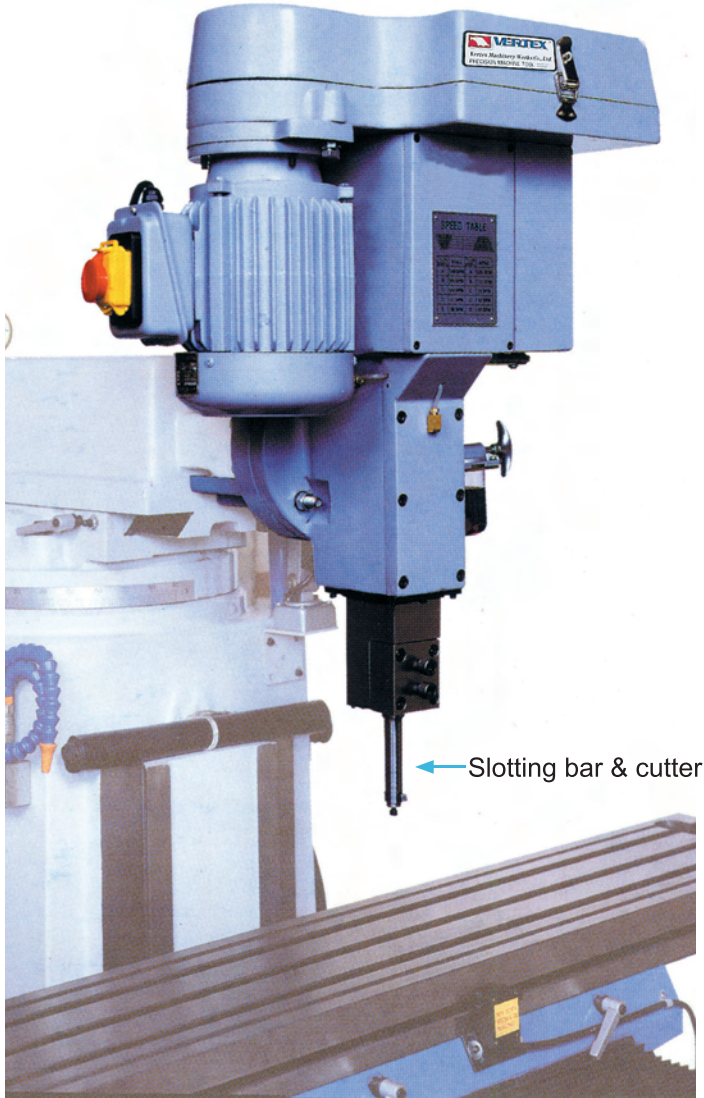


Precision Slotting Head



ORDER NO.VSH-125 CODE NO.1012-010

SLOTTING HEAD



Features

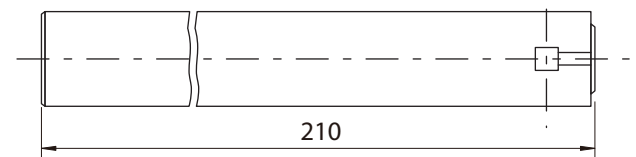
- Special design worm and worm gear with linkage transmission mechanism, well construction and highly power output.
- The ram-sliding surface are hardened and precision ground
- Built in lubricating system for smoothly running and prolong the life of head
- Available mounting on any type milling m/c back side of the ram.

Specification

Stroke: 125mm (5")
 No. of stroke speed change: 5 steps
 Stroke speed (stroke/min): 30, 47, 69, 98, 140 spm (50HZ)
 Stroke speed (stroke/min): 35, 54, 79, 112, 160 spm (60HZ)
 Driving Motor: 3/4HP-6P
 WEIGHT: 150kgs



VSH-C: 6 mm, 7 mm, 8 mm, 10 mm

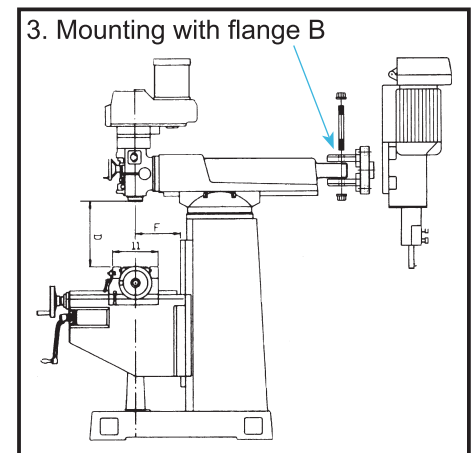
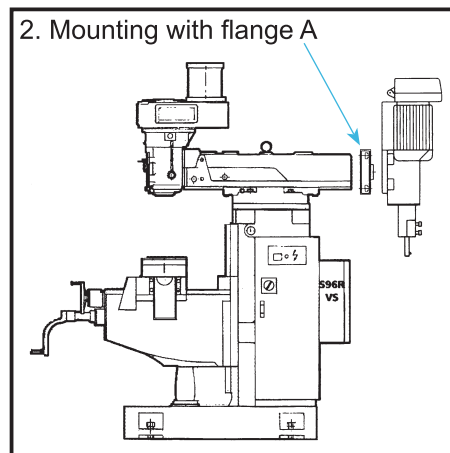
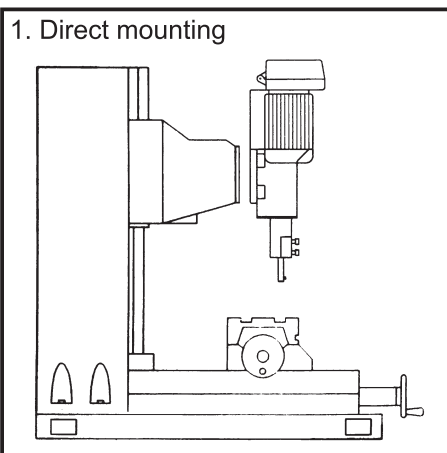


CUTTER SIZE

ORDER NO.	CUTTER & DESCRIPTION	WEIGHT (kg)	CODE NO.
VSH-6C	Slotting bar 6mm	0.56	1012-013
VSH-7C	Slotting bar 7mm	0.62	1012-014
VSH-8C	Slotting bar 8mm	0.80	1012-015
VSH-10C	Slotting bar 10mm	0.81	1012-016
VSH-FGA	FLANGE A	11	1012-017
VSH-FGB	FLANGE B	23	1012-018

Optional Accessories

- Flange A
- Flange B
- Slotting bar & cutter 4, 5, 6, 7, 8, 10mm





Universal Cutter Grinder



ORDER NO.U2 CODE NO.1022-001



For grinding HSS and carbide engraving cutter as well as single lip or multiple lip cutters of various shapes such as radiused cutters or negative taper angle of cutters. The universal index head is provided at 24 positions so that any particular angle or shape can be obtained, free 3600 or 100 rotation is allowed for grinding End Mills. Twist Drill. Lathe Tools, only replace the attachment to the index head without any complex setup.

※Please confirm voltage & phase when order.

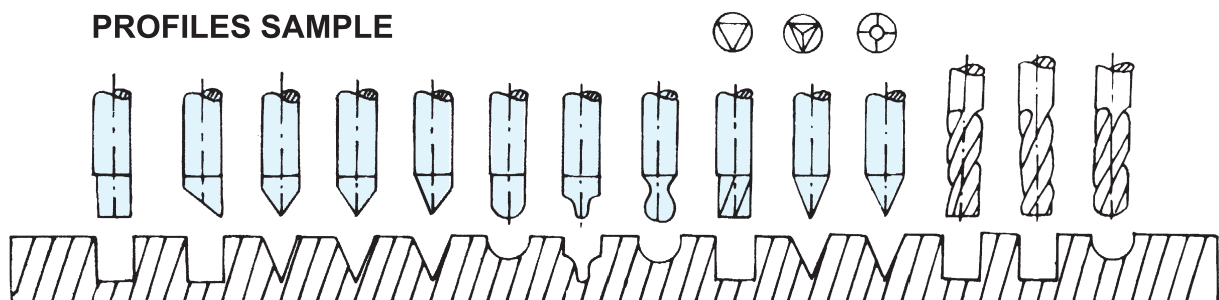
Technical Data

Max. Collet capacity Ø18mm
 Max. Grinding dia. Ø25mm
 Taper angle 0°-180°
 Relief angle 0°-45°
 Negative angle 0°-26°
 Grinding spindle 3600 r.p.m.
 Cup grinding wheel 100x50x20mm
 Motor 1/3Hp 220V50/60Hz, please notify volt & phase
 Net weight 45kgs
 G.W.: 58kgs
 Machine dimensions (LxWxH) 45x40x35cm
 Packing Dimensions (LxWxH) 55x45x47cm

Standard Accessory Included

- Wheel dresser with diamond..... 1pc
- Wheel flange (mounted)..... 1pc
- Grinding wheel (stone)..... 1pc (U2-G)
- Collet Ø4, 6, 8, 10 12mm..... 5pc
- Aligning finger..... 1pc
- Drive belt (U2-B)..... 1pc (U2-B)
- Lock pin..... 1pc
- Tools..... 1set

ENGRAVING AND MILLING CUTTER PROFILES SAMPLE





CUTTER GRINDER

Optional Accessory

- Twist drill grinding attachment U2-T
- END mill grinding attachment U2-E
- Lathe tool grinding attachment U2-L
- Grinding wheel balancing stand LBS-100 CODE NO. 2014-010
- Diamond grinding wheel U2-D
- Resinoid Diamond & CBN Wheels U2-R
- Collect (extra 1, 2, 2.5, 3, 5, 7, 9, 16, 18, 20, 25mm and 1/8", 3/16", 1/4", 5/16", 3/8", 1/2", 5/8"). Detail specification & ORDER No. shown on page U2 collet.

END mill grinding attachment
CODE NO. 1022-010 U2-E
WEIGHT: 2kgs

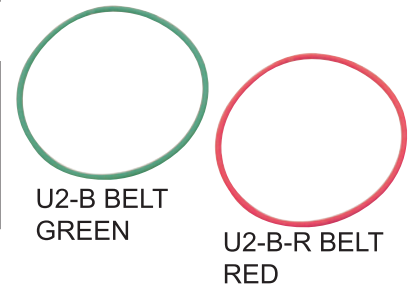


Twist drill grinding attachment
ORDER NO. U2-T CODE NO. 1022-011
WEIGHT: 0.9 kg

Lathe tool grinding attachment
ORDER NO. U2-L
CODE NO. 1022-012
WEIGHT: 0.9 kg

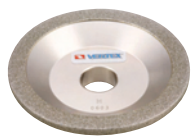


BELT
ORDER NO. U2-B BELT
CODE NO. 1022-014
ORDER NO. U2-B-R BELT
CODE NO. 1022-018



ORDER NO.	CODE NO.
U2-E	1022-010
U2-T	1022-011
U2-L	1022-012
U2-D #100	1022-013
U2-B BELT GREEN	1022-014
U2-B-R BELT RED	1022-018
U2-G WHEEL	1022-016
U2-R #200	1022-017
U2-R-1 #400	1022-017-1
VTC-20	3405-221
U2-COLLET	VE-U2-□

DIAMOND GRINDING WHEEL



U2-D
diamond
grinding wheel



U2-R
Resinoid Diamond
& CBN Wheels

U2 COLLET
Please see page C41

ORDER NO.	SIZE	GRAIN	WEIGHT (kgs)	CODE NO.
U2-D	100Dx10Wx5Ux20Hx22T	#100	0.7	1022-013
U2-R	100Dx8Wx2Xx20H	#200	0.5	1022-017
U2-R-1	100Dx8Wx2Xx20H	#400		1022-017-1

● Tool cabinet stand **VTC-20**
460 x 370 x 860 mm G.W.: 30.25 kgs
CODE NO. **3405-221**

● ORDER NO. SHOWN ON PAGE C140



VTC-20



EXAMPLE



ORDER NO.	SIZE Ø
VE-U2-□	Ø1, 2, 3, 4, 5, 6, 7, 8, 9, 10, 11, 12, 13, 14, 15, 16, 18, 20, 25 mm

U2 COLLET



Chamfering & Deburring Unit



VCF-500

Accessory: Side Mill Cutter Insert SPUN 422

SPMN 1203



ORDER NO.	CODE NO.
VCF-500	1023-001
VCF-500W	1023-002
VCF-500F	1023-003

PRACTICAL

- A. UNIVERSAL APPLICATION.
- B. SIMPLIFIED OPERATION.
- C. FAST-ACCURATE-RATIONAL.
- D. TIME SAVED.

- Tool cabinet stand VTC-20, 460 x 370 x 860 mm
CODE NO. 3405-221
PAGE A84



VCF-500W

Accessory: Grinding Wheel
100Øx50x17Ø



FEATURES FOR VCF-500, 500W, 500F

1. Simplified operation, suitable for unskilled personnel.
2. Easily to be bevelled for any length made of steel, cast iron, nonferrous metals, plastics, acrylic etc.
3. 500 : With exchangeable carbide inserts, insert can be changed easily to save cost and increase working ability.
4. 500W: With flange for grinding wheel, suit for steel material, heat treatment workpiece, can be bevelled or chamfered.
5. 500F : Working base on surface milling principles, the deburring processing surface is same as the milling machine surface.

※ Please confirm voltage & phase when order.

※ Guaranteed for 3 months



VCF-500F

Accessory: Face Milling Cutter
Insert SEKN 1203



TECHNICAL DATA

	500	500W	500F
Space requirement	500x320mm	500x440mm	500x220mm
Weight(kgs)	28.5	29.1	29
Voltage	3Ø 220V or 1Ø 110V/220V 50HZ/60HZ 3Ø 380V/415V		
Motor output	0.7KW		
Speed	3500 r.p.m.		
Length of guide rails	500x100mm	500x100mm	500x100mm
	500x40mm	500x40mm	500x40mm
Height of bevel	0-3mm		
Bevel angle	15°~45° (Changable)	45°	45°

PLEASE NOTIFY VOLTAGE & PHASE, WHEN YOU ORDERING.
C.E MARK REQUESTED



Chamfering & Deburring Unit



CHAMFERING & DEBURRING



VCF-500S

Accessory: Sanding Disc
165Øx22Ø

ORDER NO.	CODE NO.
VCF-500S	1023-004
VCF-600	1023-005
VCF-700	1023-006

PRACTICAL

- A. USING SAND-CLOTH ROLLER FOR CUTTING.
- B. GOOD FOR STEEL. CAST IRON HARDEN PARTS.
- C. NOT FOR SOFT IRON OR ALUMINUM.
- D. IF USED BENT WORKPIECE, THE CHAMFERING SURFACE WOULD NOT SMOOTHLY STRAIGHT.

FEATURES FOR VCF-

1. 500S: Uses sanding disc, can debur soft and rigid materials.
2. 600 : Easy to carry and time-saving, suitable for large size workpiece which can't be easily moved. The tools can be chamfered 0-3mm bevel angle, radius, arc angle, irregular shape, straight line, outer curve and etc.
3. 700 : The machine is used to carry out chamfering operations on any kind of ferrous material in particular steel and cast iron. Equipped with square-shaped tungsten carbide inserts-12.7x12.7x3.18 ISO 1203 SPUN. Simplified operation suitable for unskilled personnel. 3Ø220V/3Ø380V

- ※ Please confirm voltage & phase when order.
- ※ Guaranteed for 3 months

TECHNICAL DATA

	VCF-500S	VCF-600	VCF-700
Space requirement	330x410	380x130	360x200x260
Weight(kgs)	26	3.7	14
Voltage	3Ø220V or	1Ø110V/220V 3Ø380V/415V	50HZ/60HZ
Motor output	0.7KW	0.62KW	0.37KW
Speed	3500 r.p.m.	12000 r.p.m.	3500 r.p.m.
Length of guide rails	320x120mm	100mm	200mm
	320x28mm		
Height of bevel	0-3mm	0-3mm	0-7mm
Bevel angle	45°	45°	15°~45° Adjustable

PLEASE NOTIFY VOLTAGE & PHASE, WHEN YOU ORDERING.



Light duty

VCF-600

Insert SPMW 321
ZSPMW 090308



VCF-700

Side mill cutter

Heavy duty

