

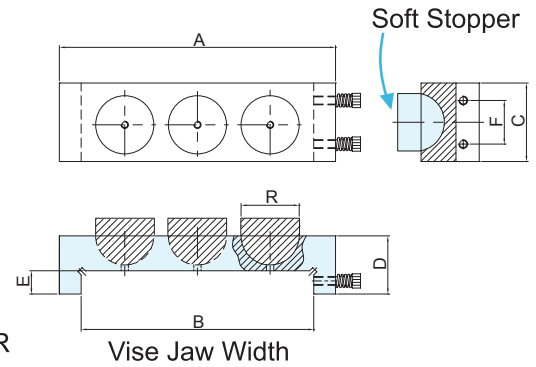


Universal Jaws With Soft Stopper

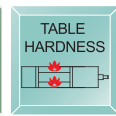
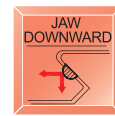


SOFT JAW

NEW



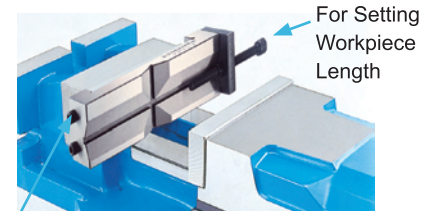
- The soft stopper can for cutting short, cutting shape, cutting taper.....etc.
- Semi-sphere ball enables down press force.
- For irregular workpiece.
- Easy setting, put on the moving jaw. B is vise jaw width.



ORDER NO.	A	B	C	D	R	WEIGHT kgs	CODE NO.
VWSJ-R100	145	100-110mm	49	38	40		1002-174
VWSJ-R130	175	125-140mm	49	39	40		1002-175
VWSJ-R160	190	150-160mm	54	40	40		1002-176
VWSJ-R200	245	200-210mm	76	42	40		1002-177



Universal Vise Jaws With Work Stopper



For Fixed On The Vise Jaw

- 4 FOR THE JAW WIDTH 100-110mm
- 5 FOR THE JAW WIDTH 125-140mm
- 6 FOR THE JAW WIDTH 150-160mm
- 8 FOR THE JAW WIDTH 200-210mm

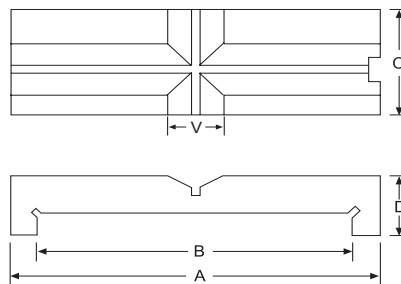
ORDER NO.

VWSJ-□ — VISE JAW SIZE

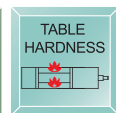
Extension clamping capacity:
vise jaw width 30-45mm
vise jaw height 7-15mm

ORDER NO. VWSJ-4, 5, 6, 8

- Can be fixed on any vise jaw by the two screws on the side.
- One jaw in multiple- function features.
- V-type jaw can fix round workpiece at horizontal and vertical position.
- Can be performed as work stopper.
- Quick, save your time.



V CLAMPING CAPACITY	
HORIZONTAL V	VERTICAL V
Ø50	Ø60
Ø50	Ø60
Ø60	Ø60
Ø80	Ø80



ORDER NO.	A	B	C	D	V	WEIGHT kgs	CODE NO.
VWSJ-4	145	110	49	38	32	1.6	1002-170
VWSJ-5	175	140	49	39	32	1.7	1002-171
VWSJ-6	190	160	53	40	32	2	1002-172
VWSJ-8	245	210	76	42	32	4.2	1002-173



Prisma Jaw



ORDER NO.
 VWS-VK-4.5.6.8 VWS-VHO-5, 6, 8
 VWS-VA-4.5.6.8 VWS-VW-3.4.5
 VWS-VH-4.5.6.8 VWS-VMC-4.6
 VWS-VJ-400.500.600 VWS-VQS-3.4.5

V CLAMPING CAPACITY	
HORIZONTAL V	VERTICAL V
Ø25	Ø25
Ø25	Ø25
Ø30	Ø30
Ø40	Ø40

ORDER NO.	kgs	CODE NO.
VWS-VK-4	0.26kg	1002-110
VWS-VK-5	0.36kg	1002-111
VWS-VK-6	0.46kg	1002-112
VWS-VK-8	1.16kg	1002-113

ORDER NO.	kgs	CODE NO.
VWS-VW-3	0.21kg	1002-120
VWS-VW-4	0.36kg	1002-121
VWS-VW-5	0.44kg	1002-122

ORDER NO.	kgs	CODE NO.
VWS-VA-4	0.4kg	1002-130
VWS-VA-5	0.51kg	1002-131
VWS-VA-6	0.96kg	1002-132
VWS-VA-8	1.76kg	1002-133

ORDER NO.	kgs	CODE NO.
VWS-VMC-4	0.35kg	1002-140
VWS-VMC-6	0.4kg	1002-141

ORDER NO.	kgs	CODE NO.
VWS-VHO-5	0.7kg	1002-145
VWS-VHO-6	1kg	1002-146
VWS-VHO-8	1.65kg	1002-147

ORDER NO.	kgs	CODE NO.
VWS-VJ-400	0.36kg	1002-163
VWS-VJ-500	0.58kg	1002-164
VWS-VJ-600	0.9kg	1002-165

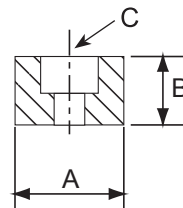
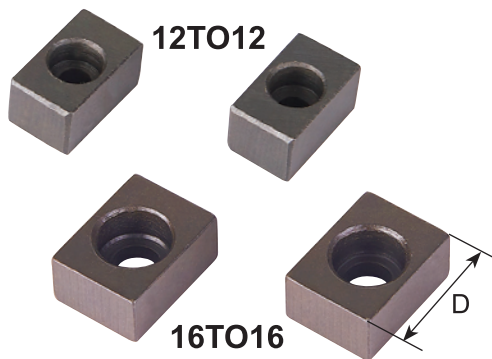
ORDER NO.	kgs	CODE NO.
VWS-VH-4	0.44kg	1002-150
VWS-VH-5	0.70kg	1002-151
VWS-VH-6	0.88kg	1002-152
VWS-VH-8	1.78kg	1002-153

ORDER NO.	kgs	CODE NO.
VWS-VQS-3	0.3kg	1002-160
VWS-VQS-4	0.42kg	1002-161
VWS-VQS-5	0.51kg	1002-162

SCREW GUIDE BLOCK



Thread Rod Guide Block



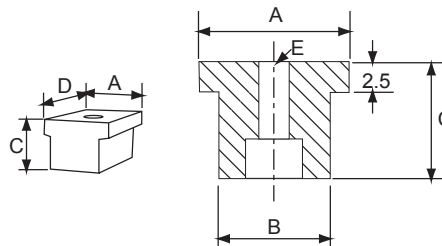
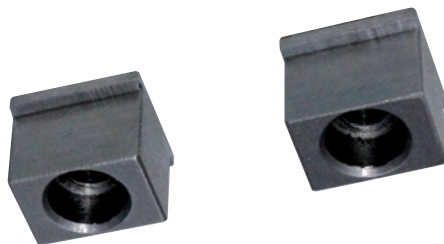
- For quick vise setup
- Multi - Purpose
- 4 PCS / SETS
- Match vise with Machine table slot
- Material: S45C

For vise

ORDER NO.	A	-0.01 -0.08	B	C For	D	WEIGHT kgs	CODE NO.
12TO12	12		10	M4	20	0.07	1002-370
14TO14	14		10	M5	20	0.07	1002-371
16TO16	16		10	M6	22	0.09	1002-372
18TO18	18		12	M6	22	0.13	1002-373
20TO20	20		12	M6	24	0.20	1002-374



Thread Rod Guide Block



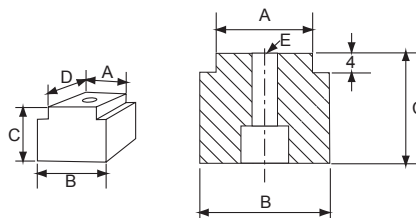
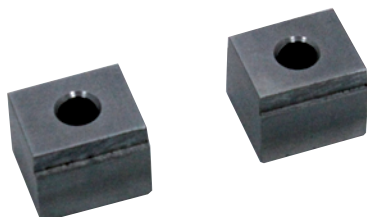
- For quick vise setup
- Multi - Purpose
- 4 PCS / SETS
- Material: S45C

For vise

ORDER NO.	A	-0.01 -0.08	B	-0.01 -0.08	C	D	E	WEIGHT kgs	CODE NO.
16TO14	16		14		14	20	M6	0.10	1002-350
18TO14	18		14		16	20	M6	0.12	1002-351
18TO16	18		16		16	20	M6	0.13	1002-352



Thread Rod Guide Block



- For quick vise setup
- Multi - Purpose
- 4 PCS / SETS
- Material: S45C

For vise

ORDER NO.	A	-0.01 -0.08	B	-0.01 -0.08	C	D	E	WEIGHT kgs	CODE NO.
14TO16	14		16		14	20	M5	0.12	1002-361
14TO18	14		18		16	20	M5	0.13	1002-362
16TO18	16		18		16	20	M6	0.15	1002-363



52-PCS Steel Clamping Kit



58 PCS/SET

Specifications

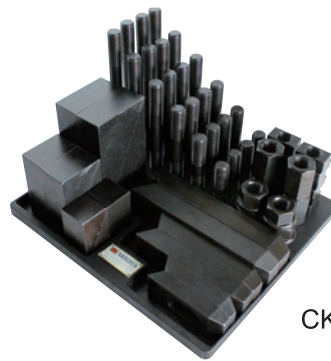
Inch Size

ORDER NO.	Table Slot	Stud Size	G.W. kg	Meas. CFT	CODE NO.
CK-103A	7/16"	3/8"-16w	6.5	(C) 0.8	1003-009
CK-103B	1/2"		6.5		1003-010
CK-104A	9/16"	1/2"-12w 1/2"-13UNC	9.7	(C) 1.0	1003-011
CK-104B	5/8"		10.4		1003-012
CK-105A	11/16"	5/8"-11w	12.5	(C) 1.5	1003-013
CK-105B	3/4"		11.8		1003-014
CK-206	7/8"	3/4"-10w	26.5	2.0	1003-015

Metric Size

ORDER NO.	Table Slot	Stud Size	G.W. kg	Meas. CFT	CODE NO.
CK-08	10	M8-1.25P	7.4	(C) 0.8	1003-001
CK-10	12	M10-1.5P	7.6		1003-002
CK-12A	14	M12-1.75P	9.4	(C) 1.0	1003-003
CK-12B	15.7		9.5		1003-004
CK-14	16	M14-2.0P	11.1	(C) 1.5	1003-005
CK-16	18	M16-2.0P	12.6		1003-006
CK-18	20	M18-2.5P	25.3	(C) 1.6	1003-007
CK-20	22	M20-2.5P	27	(C) 2.0	1003-008

- Heat treated steel black oxide finish.
- Block size 1" (25mm). Set in plastic rack consists of:
 - 24 PCS Studs (4 EACH, 3/4/5/6/7/8 inches or 75/100/125/150/175/200mm.)
 - 6 PCS T-Nuts
 - 4 PCS Coupling Nuts
 - 6 PCS Flange Nuts
 - 6 PCS Step Clamps
 - 6 PCS Step Blocks
- CK-18, CK-20, CK-206, Pack in No Plastic Tray.
- The parts of every specification all can be purchased individually.

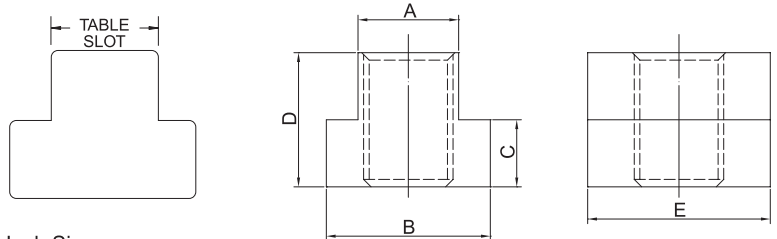
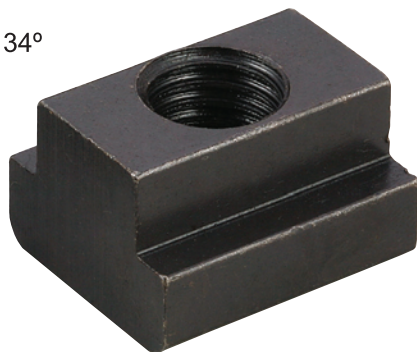


CK-20



Individually Parts T-Slot Nut

HRC 34°



Inch Size

ORDER NO.	Table Slot	Thread Size	A	B	C	Length	WEIGHT (kg)	CODE NO.
3412I	3/8	5/16	11/32	5/8	1/2	7/8	0.023	1003-179
3413I	7/16	3/8-16	11/16	7/32	1/2	7/8	0.023	1003-180
3423I	1/2		7/8	9/32	1/2	7/8	0.032	1003-181
3433I	9/16	1/2-12 1/2-13	7/8	11/32	5/8	1-1/8	0.048	1003-182
3414I	9/16		7/8	11/32	5/8	1-1/8	0.048	1003-183
3424I	5/8	5/8-11	1	11/32	5/8	1-1/8	0.06	1003-184
3434I	11/16		1-1/8	7/16	3/4	1-1/4	0.087	1003-185
3415I	11/16	3/4-10	1-1/8	7/16	3/4	1-1/4	0.087	1003-186
3425I	3/4		1-1/4	15/32	3/4	1-1/4	0.102	1003-187
3435I	13/16	1-5/8	1-1/4	9/16	1	1-1/2	0.142	1003-188
3416I	13/16		1-1/4	9/16	1	1-1/2	0.142	1003-189
3426I	7/8	1-5/8	1-1/2	9/16	1	1-1/2	0.175	1003-190
3436I	1		1-5/8	5/8	1	1-3/4	0.2	1003-191
3446I	1-1/16	1-5/8	1-5/8	11/16	1-1/2	2	0.23	1003-192
3417I	1		7/8-9	1-5/8	5/8	1	1-1/2	0.21
3418I	1-1/16	1-8	1-5/8	11/16	1-1/2	2	0.25	1003-194

Metric Size

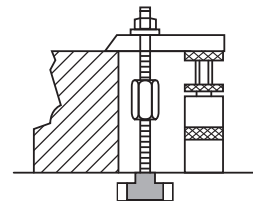
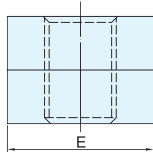
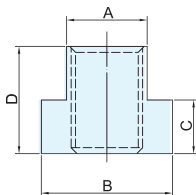
ORDER NO.	Table Slot	Thread Size	A	B	C	D	E	CODE NO.
3412M	10	M8	9.7	16	6	12	22	1003-020
3423M	12	M10	11.7	18	7	14	22	1003-021
3414M	14	M12	13.7	22	8	16	28	1003-022
A3424M	16	M12	15.7	25	8	16	28	1003-023
B3424M	16	M14	15.7	25	8	16	28	1003-024
3415M	18	M16	17.7	28	11	20	32	1003-025
3416M	20	M18	19.7	32	12	24	38	1003-026
3417M	22	M20	21.7	35	14	28	38	1003-027
3418M	28	M24	27.7	44	18	36	38	1003-028



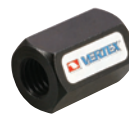
38-pcs Stud & Nut KIT



NEW!



6 pcs T-Slot Nut 4 pcs Flange Nut 4 pcs Coupling Nut 24 pcs Stud (4 EACH, 75/100/125/150/175/200 mm)



Metric Size

ORDER NO.	Table slot	Thread size	A	B	C	D	E	Weight (kg)	CODE NO.
VCK-1012	12	M10	11.7	18	7	14	22	3.0	1003-251
VCK-1214	14	M12	13.7	22	8	16	28	4.0	1003-252
VCK-1216	16	M12	15.7	25	8	16	28	4.0	1003-253
VCK-1416	16	M14	15.7	25	8	16	28	5.0	1003-254
VCK-1618	18	M16	17.7	28	11	19	31	6.5	1003-255

- Heat treated steel black oxide finish.
- Set consists of:
38 pcs Assembly

COUPLING NUT



PLAIN CLAMPS & JACKS SETS

NEW!



PLAIN CLAMPS

M12

- 6214x2pcs
- 6224x2pcs
- 6234x2pcs

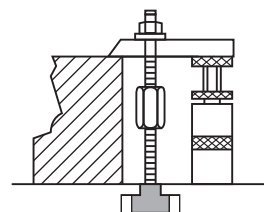


M16

- 6215x2pcs
- 6225x2pcs
- 6235x2pcs



JACKS SETS



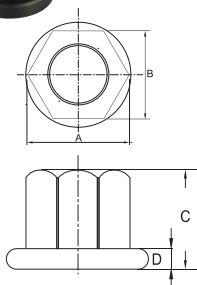
Metric Size

ORDER NO.	Thread size	Plain Clamps	JACKS	Adjustable Capacity	Weight (kg)	CODE NO.
VCK-1264	M12	64x28x12x2ps 100x32x19x2ps 150x32x22x2ps	VSJ-70Ax2ps	60-90mm	4.2	1003-271
			VSJ-150Ax2ps	90-140mm		
VCK-1665	M16	64x32x16x2ps 100x38x19x2ps 150x38x22x2ps	VSJ-70Ax2ps	65-90mm	4.5	1003-272
			VSJ-150Ax2ps	90-140mm		



Flange Nut

HRC 34°



Metric Size

ORDER NO.	Thread	A	B (Mm)	C	D	Weight (kg)	CODE NO.
4512	M8x1.25	19	13	8	2	0.013	1003-050
4513	M10x1.5	22	17	12	4	0.023	1003-051
4514	M12x1.75	28	19	17	5	0.043	1003-052
4514M	M14x2.0	28	22	17	5	0.047	1003-053
4515	M16x2.0	35	26	20	6	0.087	1003-054
4516	M18x2.5	40	32	25	6	0.10	1003-055
4517	M20x2.5	40	32	25	6	0.092	1003-056
4518	M24x3.0	50	41	32	6	0.3	1003-057

Inch Size

ORDER NO.	Thread	A	B (Mm)	C	D	Weight (kg)	CODE NO.
4512I	5/16-18	19	14	9	2	0.013	1003-050I
4513I	3/8-16	22	17	12	4	0.023	1003-051I
4514I	1/2-12NC 1/2-13NC	28	19	17	5	0.043	1003-052I
4515I	5/8-11	35	26	20	6	0.087	1003-054I
4516I	3/4-10	40	32	25	6	0.092	1003-055I
4517I	7/8-9	40	32	25	6	0.12	1003-056I
4518I	1-8	50	40	32	6	0.12	1003-057I



Clamping Studs

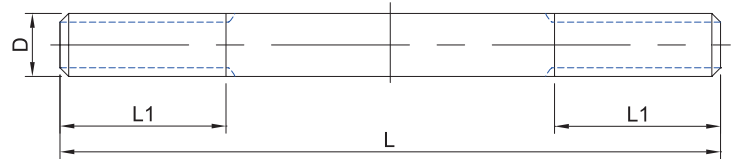


HRC 27°

Heat Treated Steel

Studs

Black Oxide Finished



Metric Size

ORDER NO.	D	L	L1	WEIGHT (kgs)	CODE NO.
1323M	M8x1.25P	75	30	0.023	1003-071
1324M		100	40	0.03	1003-072
1325M		125	40	0.04	1003-073
1326M		150	40	0.05	1003-074
1327M		175	40	0.06	1003-075
1328M		200	40	0.07	1003-076
1333M	M10x1.5P	75	30	0.04	1003-081
1334M		100	40	0.05	1003-082
1335M		125	40	0.06	1003-083
1336M		150	40	0.07	1003-084
1337M		175	40	0.09	1003-085
1338M	200	40	0.10	1003-086	
1343M	M12x1.75P	75	30	0.06	1003-091
1344M		100	40	0.07	1003-092
1345M		125	40	0.09	1003-093
1346M		150	40	0.11	1003-094
1347M		175	40	0.13	1003-095
1348M	200	40	0.15	1003-096	
1343MA	M14x2.0P	75	30	0.07	1003-101
1344MA		100	40	0.10	1003-102
1345MA		125	40	0.13	1003-103
1346MA		150	40	0.15	1003-104
1347MA		175	40	0.18	1003-105
1348MA	200	40	0.20	1003-106	
1353M	M16x2.0P	75	30	0.09	1003-111
1354M		100	45	0.13	1003-112
1355M		125	45	0.16	1003-113
1356M		150	45	0.19	1003-114
1357M		175	45	0.23	1003-115
1358M		200	45	0.25	1003-116
13510M		250	45	0.31	1003-117
13512M		300	45	0.38	1003-118
1363M	M18x2.5P	75	30	0.12	1003-120
1364M		100	40	0.16	1003-121
1365M		125	45	0.20	1003-122
1366M		150	45	0.25	1003-123
1367M		175	45	0.30	1003-124
1368M		200	45	0.32	1003-125
13610M		250	50	0.40	1003-126
13612M		300	50	0.50	1003-127
1373M	M20x2.5P	75	30	0.15	1003-140
1374M		100	40	0.20	1003-141
1375M		125	45	0.25	1003-142
1376M		150	45	0.30	1003-143
1377M		175	45	0.35	1003-144
1378M		200	45	0.40	1003-145
13710M		250	50	0.50	1003-146
13712M		300	50	0.65	1003-147
1384M	M24x3.0P	100	40	0.25	1003-150
1385M		125	45	0.35	1003-151
1386M		150	45	0.45	1003-152
1387M		175	45	0.53	1003-153
1388M		200	45	0.60	1003-154

OPERATING TORQUE FOR

TUNT. FLANGE NUT. SCREW	
SCREW SIZE	TORQUE(NM)
M3	1.1
M4	2.4
M5	4.8
M6	8.4
M8	21
M10	42
M12	72
M16	180
M20	352
M24	564

Inch Size

ORDER NO.	D	L	L1	WEIGHT (kgs)	CODE NO.
1333I	3/18-16	3"	30	0.04	1003-081I
1334I		4"	40	0.05	1003-082I
1335I		5"	40	0.06	1003-083I
1336I		6"	40	0.07	1003-084I
1337I		7"	40	0.09	1003-085I
1338I		8"	40	0.10	1003-086I
1343I	1/2-12 1/2-13	3"	30	0.06	1003-091I
1344I		4"	40	0.07	1003-092I
1345I		5"	40	0.09	1003-093I
1346I		6"	40	0.11	1003-094I
1347I		7"	40	0.13	1003-095I
1348I	8"	40	0.15	1003-096I	
1353I	5/8-11	3"	30	0.09	1003-111I
1354I		4"	40	0.13	1003-112I
1355I		5"	40	0.16	1003-113I
1356I		6"	40	0.19	1003-114I
1357I		7"	40	0.23	1003-115I
1358I		8"	40	0.25	1003-116I
13510I		10"	45	0.31	1003-117I
13512I		12"	45	0.38	1003-118I
1363I	3/4-10	3"	30	0.12	1003-120I
1364I		4"	40	0.16	1003-121I
1365I		5"	45	0.20	1003-122I
1366I		6"	45	0.25	1003-123I
1367I		7"	45	0.30	1003-124I
1368I		8"	45	0.32	1003-125I
13610I		10"	50	0.40	1003-126I
13612I		12"	50	0.50	1003-127I
13614I	14"	50	0.62	1003-128I	
13616I	16"	50	0.75	1003-129I	
13618I	18"	50	0.87	1003-130I	
13620I	20"	50	1.00	1003-131I	
1373I	7/8-9	3"	30	0.183	1003-140I
1374I		4"	45	0.25	1003-141I
1375I		5"	45	0.30	1003-142I
1376I		6"	45	0.40	1003-143I
1377I		7"	45	0.45	1003-144I
1378I	8"	45	0.50	1003-145I	
1384I	1"-8	4"	45	0.25	1003-150I
1385I		5"	45	0.35	1003-151I
1386I		6"	45	0.45	1003-152I
1387I		7"	45	0.53	1003-153I
1388I		8"	45	0.60	1003-154I



Coupling Nut

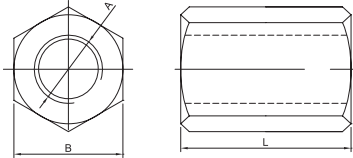


HRC 34°



Metric Size

ORDER NO.	A Thread	B Parallel	L Length	Weight (kg)	CODE NO.
2612M	M8x1.25	13	22	0.033	1003-060
2613M	M10x1.5	17	25	0.035	1003-061
2614M	M12x1.75	21	32	0.065	1003-062
2614M-1	M14x2.0	21	32	0.06	1003-063
2615M	M16x2.0	26	40	0.128	1003-064
2616M	M18x2.5	32	48	0.228	1003-065
2617M	M20x2.5	32	48	0.208	1003-066
2618M	M24x3.0	41	64	0.51	1003-067



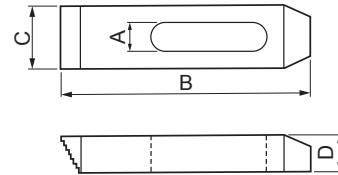
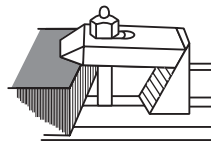
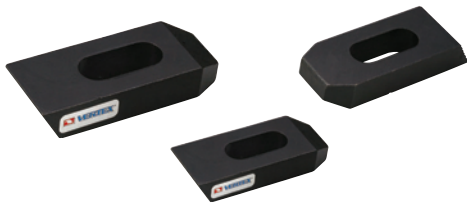
Inch Size

ORDER NO.	A Thread	B Parallel	L Length	Weight(kg)	CODE NO.
2613I	3/8-16	11/16	1	0.035	1003-061I
2614I	1/2-12 1/2-13	7/8	1-1/4	0.07	1003-062I
2615I	5/8-11	1-1/16	1-5/8	0.128	1003-064I
2616I	3/4-10	1-1/4	1-7/8	0.22	1003-065I
2617I	7/8-9	1-1/4	1-7/8	0.29	1003-066I
2618I	1-8	1-5/8	2-1/2	0.46	1003-067I



Step Clamp

HRC 37°



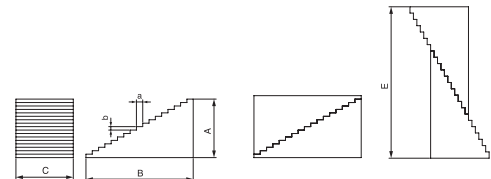
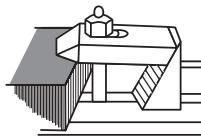
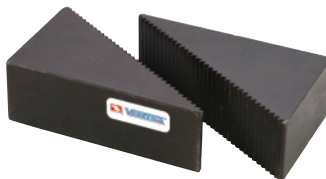
Metric Size

ORDER NO.	Bolt Size	A slot	B Length	C Width	D Thickness	Weight (kg)	CODE NO.
6113	M8 or M10	11	64	25	12	0.11	1003-030
6123	M8 or M10		100	25	16	0.26	1003-031
6133	M8 or M10		150	28	19	0.48	1003-032
6214	M12	15	64	28	12	0.125	1003-033
6224	M12		100	32	19	0.31	1003-034
6234	M12		150	32	22	0.59	1003-035
6215	M16	18	64	32	16	0.16	1003-036
6225	M16		100	38	19	0.39	1003-037
6235	M16		150	38	22	0.71	1003-038
6316	M20 or M18	20	100	38	19	0.36	1003-039
6326	M20 or M18		150	38	25	0.73	1003-040
6336	M20 or M18		200	44	28	1.44	1003-041
6417	M24	26	150	50	32	1.15	1003-042
6427	M24		200	50	35	2	1003-043
6437	M24		250	50	38	2.67	1003-044



Step Block

HRC 37°



ORDER NO.	A	B	C	E	a	b	CODE NO.
5114	19	30	25	45	3.1	1.8	1003-170
5124	30	47	25	70	3.1	1.8	1003-171
5134	59	97	25	147	3.1	1.8	1003-172
5114B	19	30	32	45	3.1	1.8	1003-170B
5124B	30	47	32	70	3.1	1.8	1003-171B
5134B	59	97	32	147	3.1	1.8	1003-172B
5215	39	59	38	87	3.1	1.8	1003-173
5225	61	97	38	147	3.1	1.8	1003-174
5235	86	140	38	210	3.1	1.8	1003-175



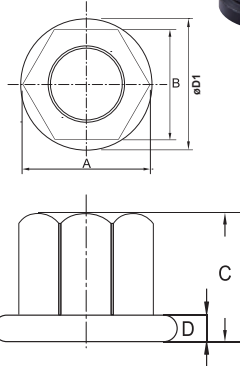
Flange Nut

DIN 6331 STANDARD



By machine process.
With turned & milled
Heat treated and oxide fines
HRC 34°

NEW



Metric Size

ORDER NO.	Thread	A	B	C	D	ØD1	Weight (kg)	CODE NO.
CFN0814	M8 X 1.25	15.55	14	13	3	19	0.015	1003-159
CFN1017	M10 X 1.5	18.90	17	15	4	22	0.02	1003-160
CFN1219	M12 X 1.75	21.10	19	18	4	25	0.03	1003-161
CFN1422	M14 X 2.0	24.50	22	21	4.5	28	0.04	1003-162
CFN1624	M16 X 2.0	26.80	24	24	5	31	0.06	1003-163
CFN1827	M18 X 2.5	30.10	27	27	5	34	0.09	1003-164



C-Clamp Cast Steel

NEW

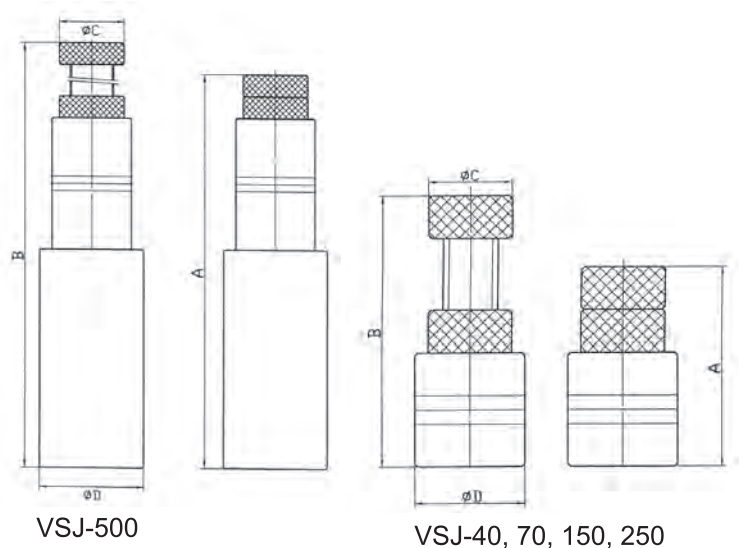


ORDER NO.	MAX. OPEN	THROAT DEPTH	LxW	WEIGHT (kgs)	CODE NO.
VCL-2C	1-7/8"	1-7/8"	120x84mm	0.22	1003-210
VCL-3C	2-3/4"	2"	163x91mm	0.38	1003-211
VCL-4C	3-7/8"	2-1/2"	195x102mm	0.59	1003-212
VCL-6C	6"	3-1/2"	270x127mm	1.18	1003-213
VCL-8C	7-3/8"	4-1/2"	345x161mm	1.75	1003-214



Screw Jack

- Work clamping
- Material: S45C
- Support heavy weight



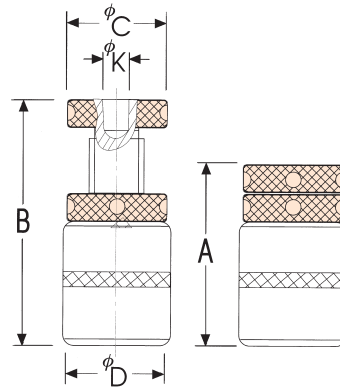
ORDER NO.	ADJUSTABLE CAPACITY	A	B	C	ØD	ALLOWED LOAD KN	K.G.	CODE NO.
VSJ-40	40-50mm	40	52	30	40	30	0.3	1014-000
VSJ-50	51-65mm	51	65	35	40	30	0.5	1014-005
VSJ-70	65-90mm	65	95	28	38	30	0.4	1014-001
VSJ-150	90-140mm	88	140	40	50	30	1.1	1014-002
VSJ-250	140-230mm	135	230	45	55	30	2.3	1014-003
VSJ-500	265-360mm	265	360	45	72	30	4.6	1014-004



Thread Rod Jack With Magnet



- Cross type fixture gives best positioning.
- Built-in magnets designed, easy to clean chips.
- Height adjuster



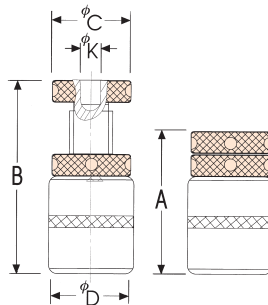
SCREW JACK

ORDER NO.	A	B	C	D	K	ALLOWED LOAD KN	K.G.	CODE NO.
VSJM-50	42	47	35	40	11.5	30	0.4	1014-010
VSJM-70	51	65	35	40	11.5	30	0.5	1014-011
VSJM-85	67	87	40	45	11.5	30	0.7	1014-012
VSJM-110	86	116	40	45	11.5	30	0.8	1014-013
VSJM-165	110	170	45	50	11.5	30	1.4	1014-014



Thread Rod Jack Set

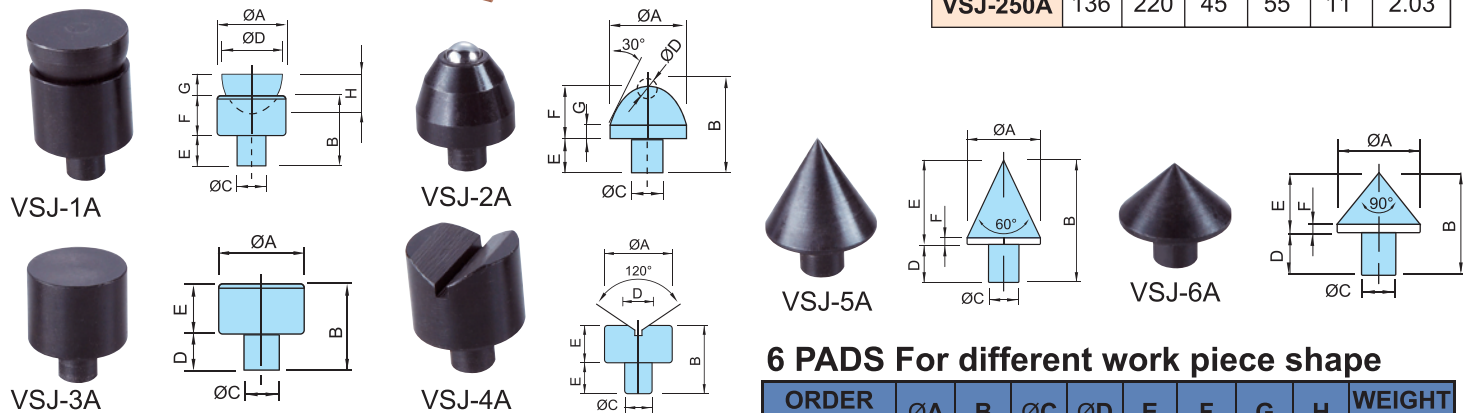
NEW



- SUITABLE FOR IRREGULAR WORKPIECE. RAPID SETTING & FIXED.
- WORK CLAMPING & SUPPORT.
- HEIGHT ADJUSTER

ORDER NO.	A	B	ØC	ØD	ØK	WEIGHT K.G.
VSJ-70A	65	90	28	38	11	0.4
VSJ-150A	88	140	40	50	11	1.06
VSJ-250A	136	220	45	55	11	2.03

PADS:



6 PADS For different work piece shape

ORDER NO.	SET INCLUDING		WEIGHT K.G.	CODE NO.
	JACKS	PARTS EACH ONE		
VSJ-A	VSJ-70A x 2 VSJ-150A x 2	VSJ-1A, VSJ-2A, VSJ-3A VSJ-4A, VSJ-5A, VSJ-6A	4.0	1014-020
VSJ-B	VSJ-150A x 2 VSJ-250A x 2	VSJ-1A, VSJ-2A, VSJ-3A VSJ-4A, VSJ-5A, VSJ-6A	7.5	1014-021

ORDER NO.	ØA	B	ØC	ØD	E	F	G	H	WEIGHT K.G.
VSJ-1A	25	30	11	19	10	20	7	11.5	0.1
VSJ-2A	25	34	11	9.5	10	20	6		0.07
VSJ-3A	25	30	11	10	20				0.08
VSJ-4A	25	30	11	15	10	20			0.08
VSJ-5A	25	33	11	10	23	2			0.04
VSJ-6A	25	34	11	10	14	2			0.03

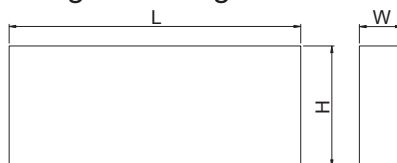


Ground Parallels

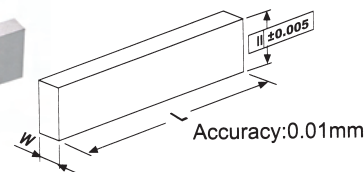


ORDER NO.VP-100 CODE NO.1004-001

To provide more convenient processing for milling vise.



- Hardness: HRC 48°-53°
- Accuracy: 0.01mm
- Process: Four-side ground
- 1 set includes 18 pcs
- Packed by plastic case, G.W.: 11.7 kgs, Meas: 0.3 CFT.
- Dimension: 390x292x84mm



Unit:mm

BODY SIZE	CLAMP SIZE
WxHxLxPcs	AxBxCxLxPcs
5x16x100x2	15x31x2.5x200x2
6x18x100x2	
8x24x100x2	
10x30x100x2	
12x36x150x2	
14x48x150x2	
18x60x150x2	
22x62x150x2	



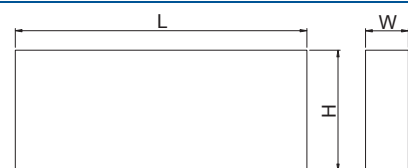
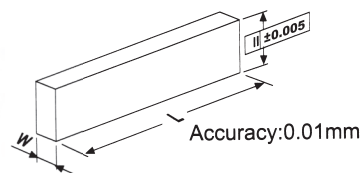
Ground Parallels

ORDER NO.VP-118A CODE NO.1004-010

8.5mm WIDTH, 5.8kgs



- Hardness: HRC 48°-53°
- MADE OF HIGH GRADE ALLOY STEEL HARDENED AND GROUND.
- Dimension: 290x228x80mm



Unit:mm

WxHxLxPcs	
8.5x14x150x2	8.5x32x150x2
8.5x16x150x2	8.5x36x150x2
8.5x20x150x2	8.5x40x150x2
8.5x24x150x2	8.5x44x150x2
8.5x30x150x2	

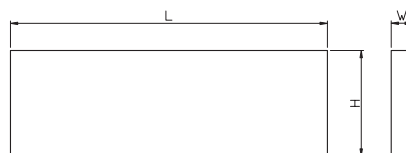


Ground Parallels

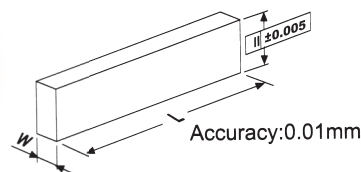
ORDER NO.VP-128A CODE NO.1004-020

28 PCS/SET 10.7kgs

VP-128A 10mm WIDTH



- Hardness: HRC 48°-53°
- MADE OF HIGH GRADE ALLOY STEEL HARDENED AND GROUND.
- Dimension: 390x292x82mm



Unit:mm

WxHxLxPcs	
10x14x150x2	10x28x150x2
10x16x150x2	10x30x150x2
10x18x150x2	10x32x150x2
10x20x150x2	10x35x150x2
10x22x150x2	10x40x150x2
10x24x150x2	10x45x150x2
10x26x150x2	10x50x150x2



Precision Parallels



ORDER NO.VP-136 CODE NO.1004-030

To provide more convenient processing for milling vise

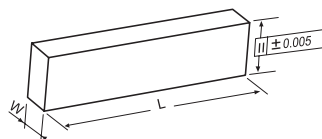
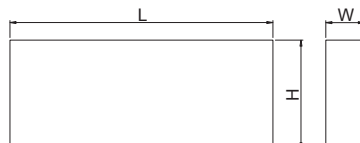
- Hardness: HRC 48°-53°

ACCURACY:0.01mm

WIDTH 8.0mm

36 PCS/SET 12.3kgs

Unit:mm



WxHxLxPcs	
8x16x150x2	8x34x150x2
8x18x150x2	8x36x150x2
8x20x150x2	8x38x150x2
8x22x150x2	8x40x150x2
8x24x150x2	8x42x150x2
8x26x150x2	8x44x150x2
8x28x150x2	8x46x150x2
8x30x150x2	8x48x150x2
8x32x150x2	8x50x150x2

- Dimension: 390x292x82mm

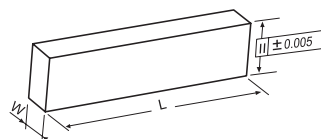
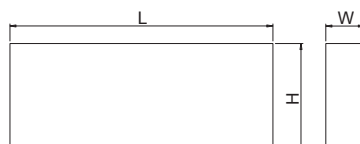


VP-018 Thin Type Parallels Set

ORDER NO.VP-018 CODE NO.1004-040

3Wx150Lx20 PCS/SET

- Hardness: HRC 48°-53°



G.W. 2.5kgs.

ACCURACY: 0.01mm

THICKNESS 1/8" ≒ 3mm

WxHxLxPcs	WxHxLxPcs
3x13x150x2	3x28x150x2
3x16x150x2	3x31x150x2
3x19x150x2	3x35x150x2
3x22x150x2	3x38x150x2
3x25x150x2	3x41x150x2

- Dimension: 290x230x73mm

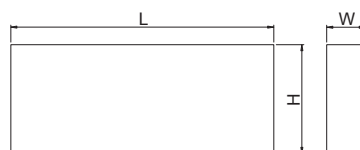


VP-163 Precision Parallels

ORDER NO.VP-163 CODE NO.1004-050

5Wx150Lx8 PCS/SET

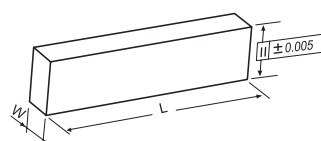
- Hardness: HRC 48°-53°



G.W. 1.7kgs.

ACCURACY: 0.01mm

THICKNESS 3/16" ≒ 5mm



WxHxLxPcs
5x25x150x2
5x31x150x2
5x38x150x2
5x44x150x2

- Dimension: 175x85x55mm