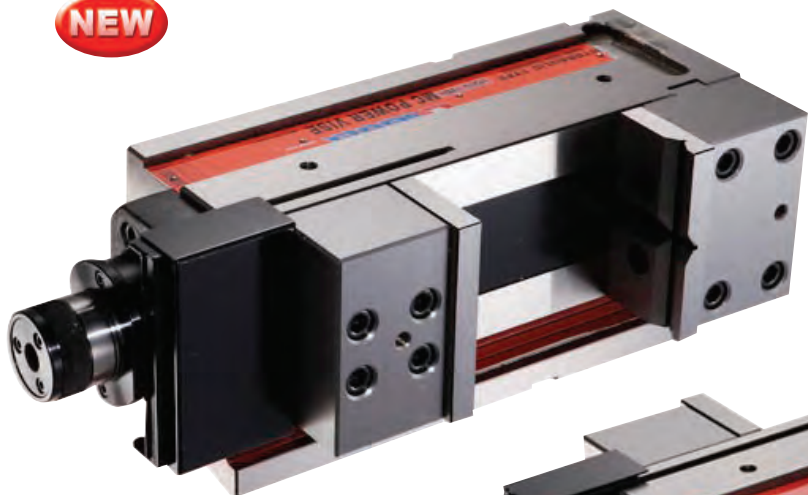




PATENT

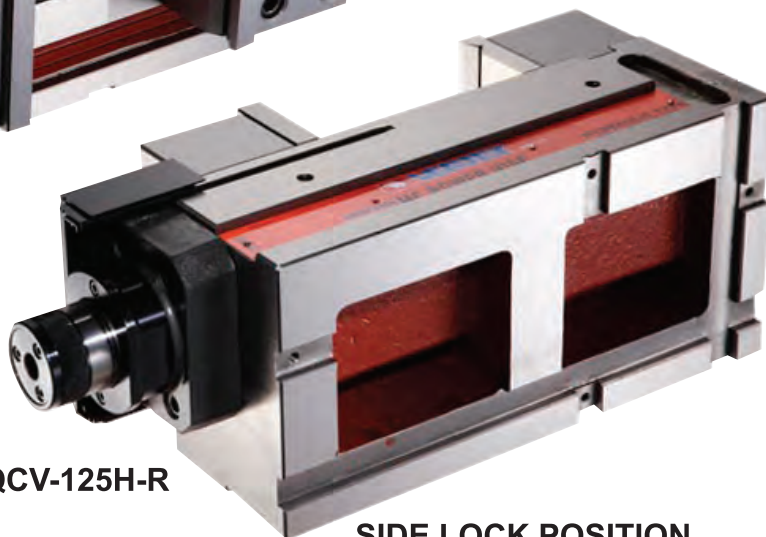
NEW



VQCV-125H-L

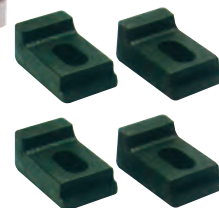
NEW

A GOOD POWERFUL CLAMPING WAY FOR SIDELOCK & STANDING POSITION & HEAVY CUTTING.



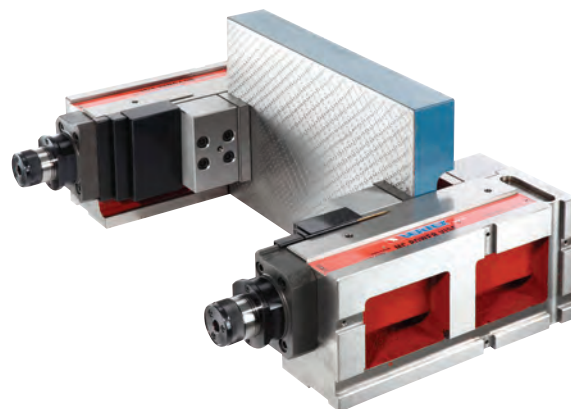
VQCV-125H-R

SIDE LOCK POSITION



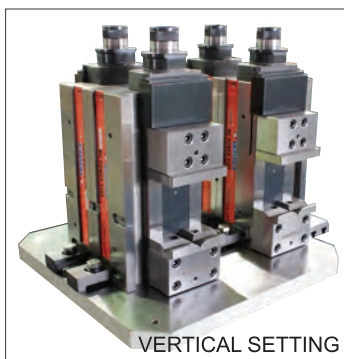
Features

- Multiple purpose.
- Fast & Horizontal & Side setting. Heavy Duty.
- Firm & Rigid & Accurate.
- Unique design allows processing being easier.
- Fast : 2 location setting slots for locating key.
- Dust-proof : concealed spindle.
- Engraved cross shaped jaw for flat & round workpiece.
- All Parts are inter - changeable with VQC-series.
- Hydro line - one scale indicate about 1/3 of the max. clamp force.



BACK TO BACK ALIGNMENT

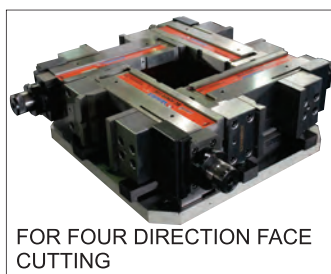
- Strong & Stable
- Fast Setting



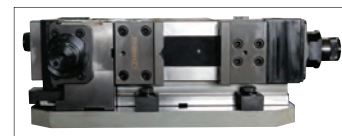
VERTICAL SETTING



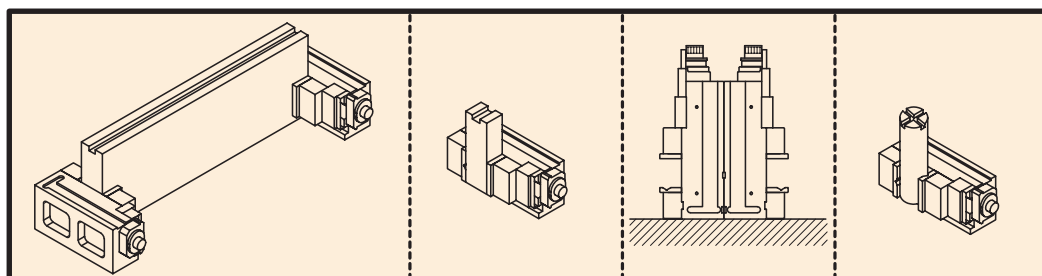
SIDE LOCK POSITION SETTING



FOR FOUR DIRECTION FACE CUTTING



NEW DESIGN FOR BETTER CLAMPING WAY

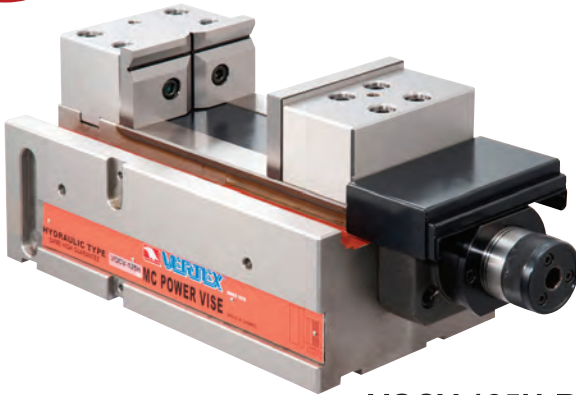




PATENT

NEW

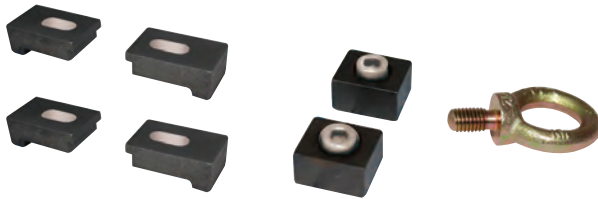
BEST FOR VERTICAL SETTING



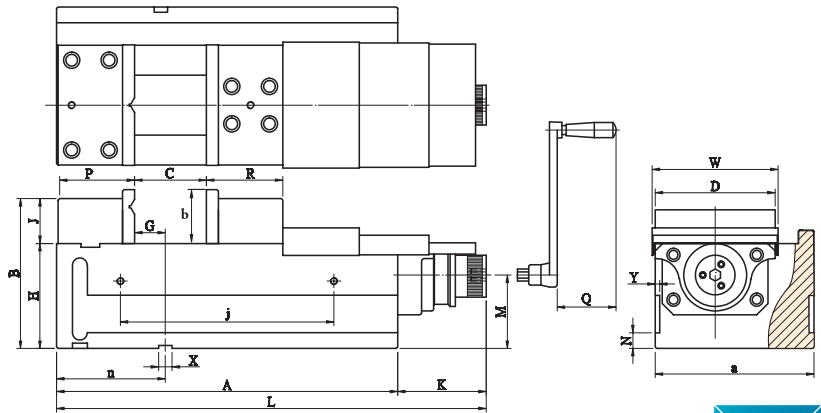
VQCV-125H-R



VQCV-125H-L



DIMENSION DIAGRAM



HORIZONTAL VERTICAL POSITION



- Strong Vertical Clamping

HYDRO-BOOSTER 	SAME HEIGHT MULTIPLE USING 	ACCURACY GUARANTEE 0.01/100 MM 0.02/50 	TABLE HARDNESS 	BENDING PROOF 	MECHANICAL 	patent PAT.
--------------------------	---------------------------------------	--	---------------------------	--------------------------	-----------------------	------------------------

L IS LEFT HAND , R IS RIGHT HAND

ORDER NO.	CODE NO.
VQCV-125H - L	4005-091
VQCV-125H - R	4005-092
VQCV-160H - L	4005-093
VQCV-160H - R	4005-094

ORDER NO.	JAW b	JAW Open C	B	MAX. Clamping Force(8#KN)	G.W. kg
VQCV-125H- L R	72	165	180	40	53
VQCV-160H- L R	72	235	200	60	85

ORDER NO.	A	B	a	D	P	R	G	H	J	K
VQCV-125H- L R	364	180	177	125	94	90	43	120	60	113.5
VQCV-160H- L R	455	200	212	160	102	102	42	140	60	125.5

ORDER NO.	L	M	N	Q	W	X	Y	C OPEN	j	n
VQCV-125H- L R	477.5	85	21	73	135	18	7	162	215	139
VQCV-160H- L R	580.5	98	21	93	170	18	7	235	285	145

MC POWER VISE



Soft Jaws

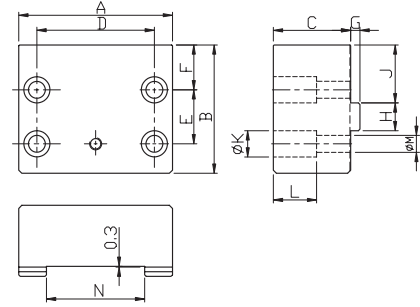


OPTIONAL: Soft jaw for different shape workpiece FJ & MJ can for cutting

FJ



Fixed side



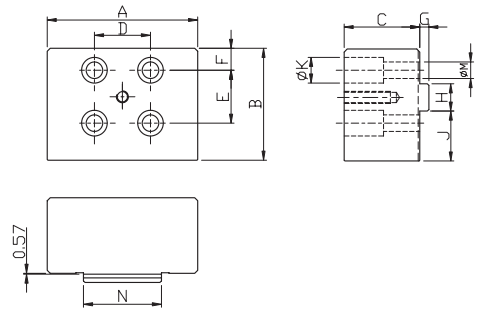
SOFT FIXED JAW

ORDER NO.	A	B	C	D	E	F	G	H	J	K	L	M	N	WEIGHT	CODE NO.
VQC-100FJ	99.5	73	50	76	35	19	6	18	27.5	17	26	11	55	2.97	4005-013C
VQC-125FJ	124.5	91	60	88	45	29.5	8	24	40	19	33.5	13	63	4.96	4005-014
VQC-160FJ	159.5	102	60	124	50	34	9	28	45	22	30	15	84	7.2	4005-015
VQC-160L-FJ	159.5	102	60	124	50	34	9	28	45	22	30	15	84	7.2	4005-016
VQC-200L-FJ	200	122	75	140	62	40	9	28	57	25	37	17	100	3.61	4005-016A

MJ



Movable side



SOFT MOVEABLE JAW

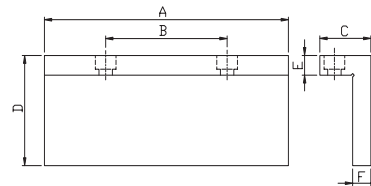
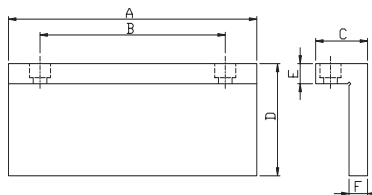
ORDER NO.	A	B	C	D	E	F	G	H	J	K	L	M	N	WEIGHT	CODE NO.
VQC-100MJ	99.5	64	50	37	35	14.5	6	18	23	17	26	11	51.5	2.65	4005-017A
VQC-125MJ	124.5	87	60	35	42	29	8	24	38	19	33.5	13	59.5	4.73	4005-017
VQC-160MJ	159.5	102	60	56	50	34	9	28	45	22	30	15	80.5	7.25	4005-018
VQC-160L-MJ	159.5	102	60	56	50	34	9	28	45	22	30	15	80.5	7.25	4005-019
VQC-200L-MJ	200	117	75	62	59	39	9	28	54.5	25	37	17	95	13.08	4005-019A



Soft Jaws



Suit for VQC & VQC-H type



L TYPE FOR FIXED JAW

ORDER NO.	A	B	C	D	E	F	WEIGHT	CODE NO.
VQC-100FPF	100	70	37	49	15	15	0.81	4005-040
VQC-125FPF	125	80	37	54	15	15	1.06	4005-041
VQC-160FPF	160	100	42	59	15	15	1.55	4005-042
VQC-200FPF	201	150	42	84	15	15	2.56	4005-043

L TYPE FOR MOVEABLE JAW

ORDER NO.	A	B	C	D	E	F	WEIGHT	CODE NO.
VQC-100FPM	100	40	37	49	15	15	0.81	4005-046
VQC-125FPM	125	50	37	54	15	15	1.06	4005-047
VQC-160FPM	160	80	42	59	15	15	1.55	4005-048
VQC-200FPM	201	100	42	84	15	15	2.56	4005-049



Hard Jaws-L Type Jaws



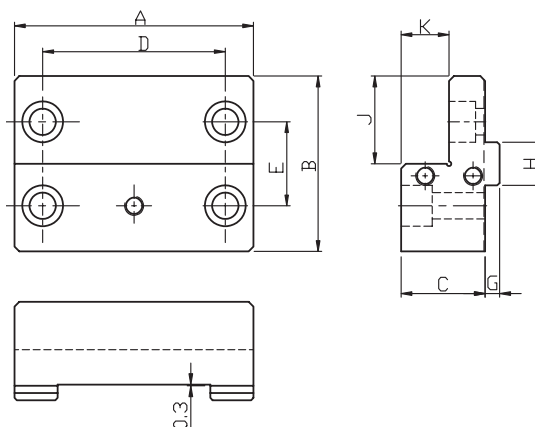
MC POWER VISE



OPTIONAL: Hard jaw for thin type workpiece

VICE JAWS CAN TURN 180° FOR YOUR REQUIREMENT.

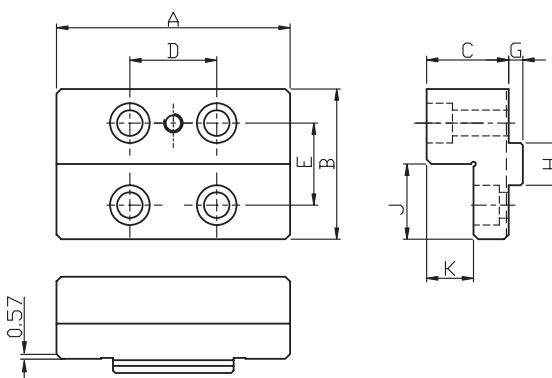
FJL



L TYPE FIXED JAW

ORDER NO.	A	B	C	D	E	G	H	J	K	WEIGHT	CODE NO.
VQC-100FJL	99.5	73	35	76	35	6	18	36.5	20	1.27	4005-010B
VQC-125FJL	124.5	78	40	88	45	8	24	39	20	2.09	4005-008A
VQC-160FJL	159.5	86	50	124	50	9	28	43	25	3.78	4005-009
VQC-160L-FJL	159.5	86	50	124	50	9	28	43	25	3.78	4005-010
VQC-200L-FJL	200	102	70	140	62	9	28	51	35	7.92	4005-010A

MJL



L TYPE MOVEABLE JAW

ORDER NO.	A	B	C	D	E	G	H	J	K	WEIGHT	CODE NO.
VQC-100MJL	99.5	64	35	37	35	6	18	32	20	1.15	4005-013B
VQC-125MJL	124.5	74	40	35	42	8	24	37	20	2.02	4005-011
VQC-160MJL	159.5	86	50	56	50	9	28	43	25	3.86	4005-012
VQC-160L-MJL	159.5	86	50	56	50	9	28	43	25	3.86	4005-013
VQC-200L-MJL	200	98	70	62	59	9	28	49	35	7.69	4005-013A



Precision Compact MC power Vise



PATENT

New Design For Hydro Booster
1 Year Guarantee

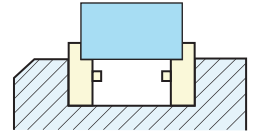
for machining center

HYDRO & MECHANICAL TYPE
GREAT SMOOTH OPERATION
SAME HEIGHT GUARANTEE



HYDRO FORCE INDICATOR A→H

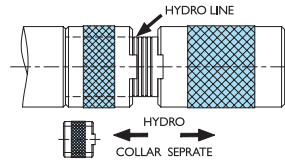
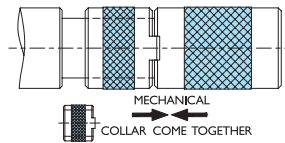
HYDRO BOOSTER



SPECIAL JAW DESIGNED FOR THIN WORKPIECE

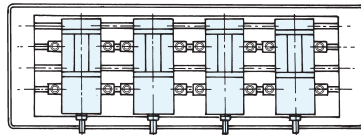


HYDRO LINE

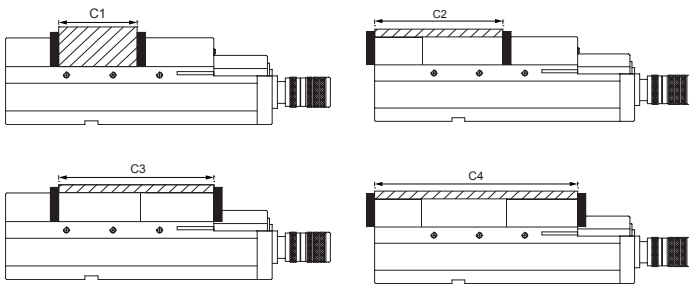
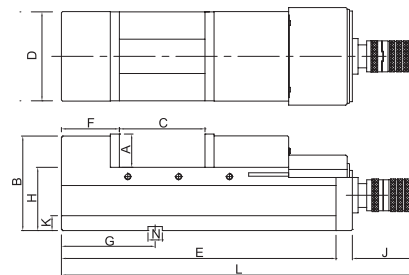


Features

- FCD 60 with 60kgs/mm² or 80,000 psi high quality ductile cast iron - body material - reduce the cutting vibration.
- Angle-fixed design : for vertical & horizontal cutting & processing machine.
- Everlasting clamping power : choices of 2 - Hydro & MC.
- Hydro : move the handle ring to word vise.
- Mechanical : move the handle ring toward the hex. hole.
- Heavy cutting.
- Hardness > HRC 45° : vise sliding bed.
- High durebility & high precision.
- Tolerance : 0.01/100mm
- Lift proof : press down design.
- Bending resistance : rigid & strong.
- Dust proof : concealed spindle.
- Fast & easy operation.
- Hydro line - one scale indicate about 1/3 of the max. clamp force.



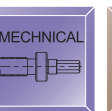
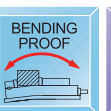
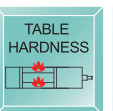
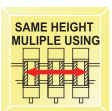
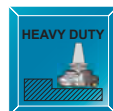
Aligned Performance



SAME HEIGHT GUARANTEE

INSPECTION SPECIFICATION

NO.	Inspection Item	Per (100mm)	Guaranteed
1	Parallelism: running face to bottom of bed.		0.01/100mm
2	Squareness :between running face and jaw plate.		0.02
3	Squareness: keway on bottom of bed to jaw plate.		0.02/100mm
4	Parallelism: running face of the test block to bottom of bed.		0.02/100mm



Hydraulic Type

ORDER NO.	A	B	C OPEN	D	E	F	G	H	J	K	L	M	N	Clamping Force (kgf)	Weight Body	CODE NO.
VMC-100HV	55	130	125	100	340	80	125	85	110	15	470	101	16	3000	27 kgs	4005-060
VMC-130HV	62	147	180	130	405	85	150	95	110	21	535	131	18	4000	40 kgs	4005-061
VMC-160HV	65	168	240	160	495	100	165	105	110	21	625	161	18	5000	58 kgs	4005-062
VMC-200HV	70	170	280	200	570	118	190	110	110	21	700	201	18	6000	87 kgs	4005-063
VMC-160HVL	65	168	350	160	610	100	165	105	110	21	740	161	18	5000	75 kgs	4005-059



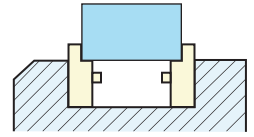
Precision Compact MC Vise



SAME HEIGHT GUARANTEE

for machining center

Mechanical Type
Great Smooth Operation



SPECIAL JAW DESIGNED FOR THIN WORKPIECE

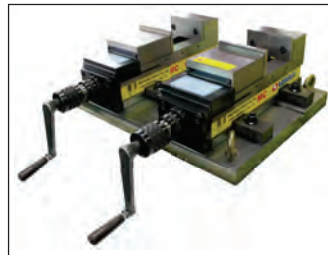


MC POWER VISE

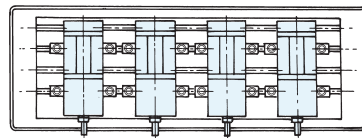
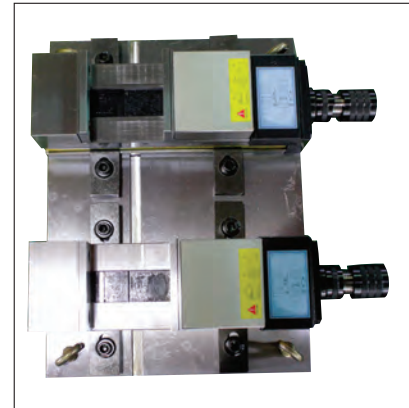
Features

- FCD 60 high quality ductile cast iron - body material - reduce the cutting vibration.
- Angle-fixed design : for vertical & horizontal cutting & processing machine.
- Everlasting clamping power.
- Heavy cutting.
- Hardness > HRC 45° : vise sliding bed.
- High durebility & high precision.
- Tolerance : 0.01/100mm
- Lift proof : press down design.
- Bending resistance : rigid & strong.
- Dust proof : concealed spindle.
- Fast & easy operation.

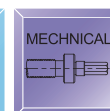
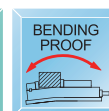
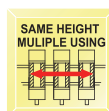
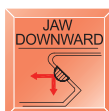
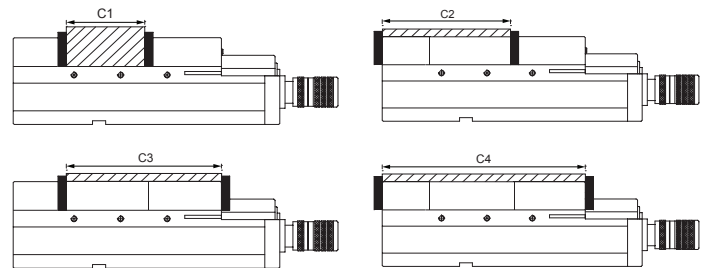
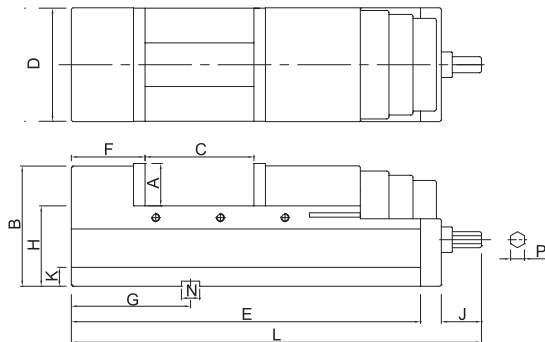
EXP.



EXP.



Aligned Performance



Mechanical Type

ORDER NO.	A	B	C OPEN	D	E	F	G	H	J	K	L	M	N	P	Clamping Force (kgf)	Weight Body	CODE NO.
VMC-100M	55	130	125	100	340	80	125	85	55	15	425	101	16	19	3000	26 kgs	4005-064
VMC-130M	62	147	180	130	405	85	150	95	55	21	490	131	18	19	3000	39 kgs	4005-065
VMC-160M	65	168	240	160	495	100	165	105	55	21	580	161	18	19	3000	60 kgs	4005-066
VMC-200M	70	170	280	200	570	118	190	110	55	21	655	201	18	19	3000	86 kgs	4005-067
VMC-160ML	65	168	350	160	610	100	165	105	55	21	695	161	18	19	3000	67 kgs	4005-058



NC Hydro Machine Vices

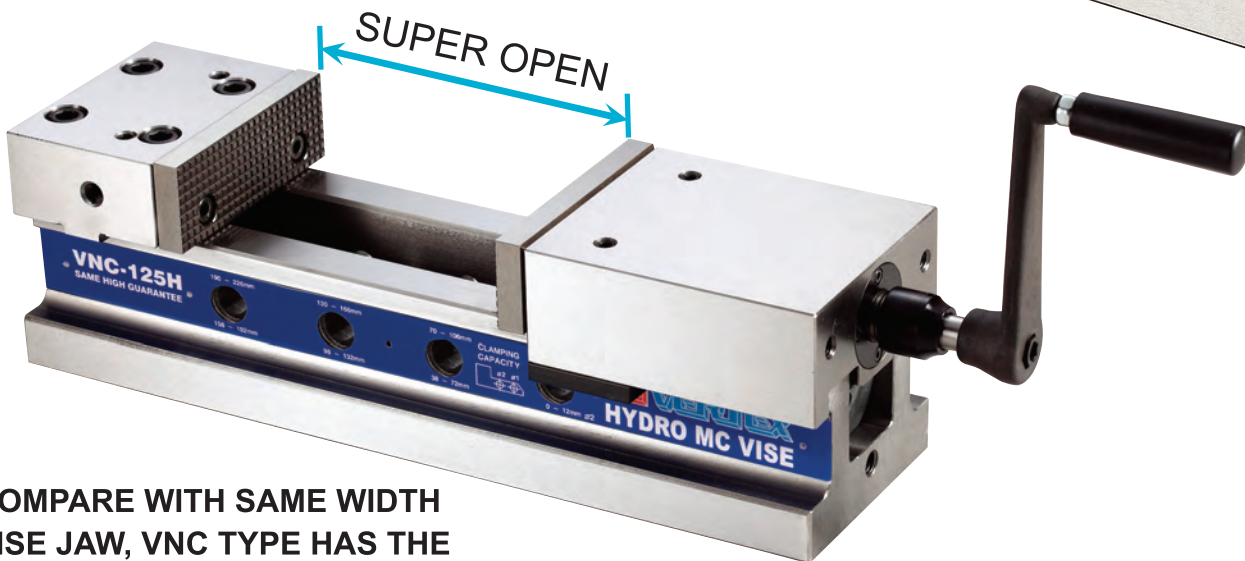
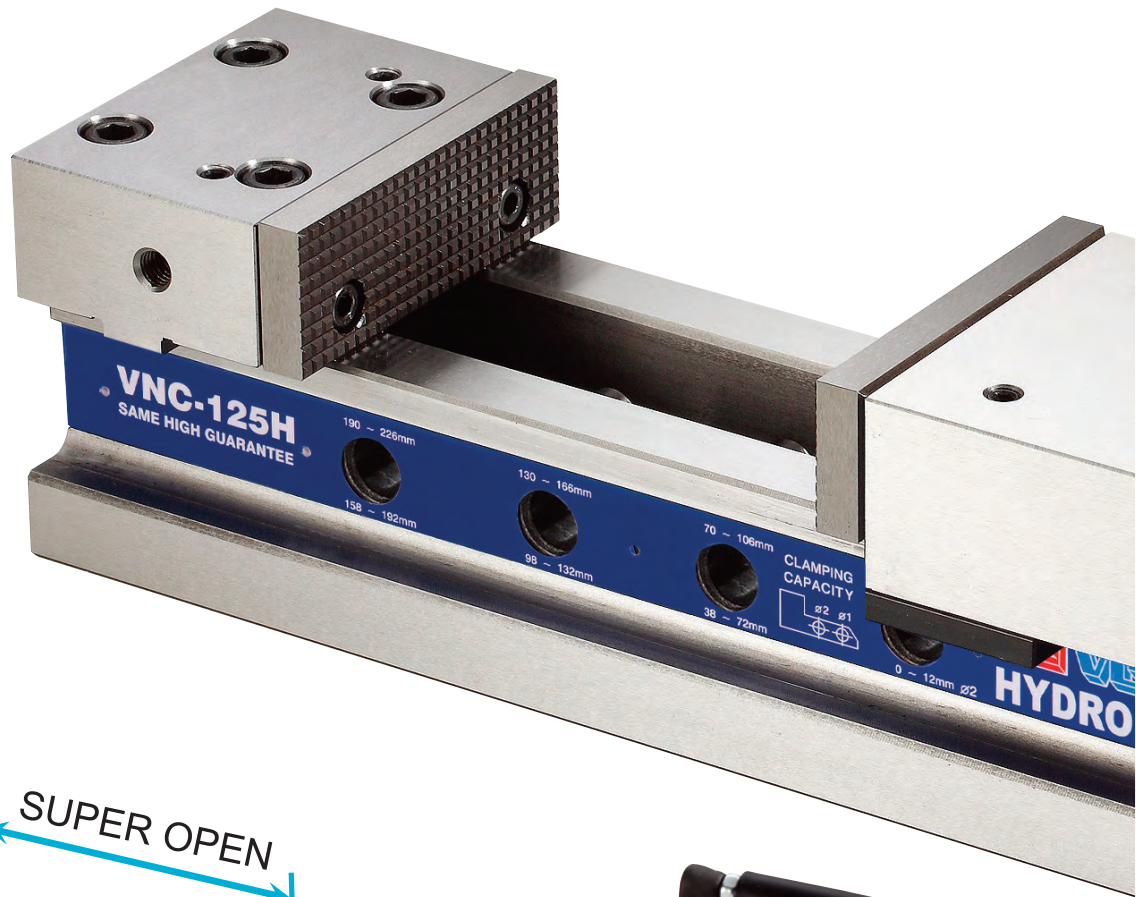


PATENT

SAME HEIGHT GUARANTEE



NEW



COMPARE WITH SAME WIDTH VISE JAW, VNC TYPE HAS THE BIGGEST OPENING CAPACITY.

Features

- Hydro-booster system for maximum clamping pressure with minimum force.
- Sliding bed ways flame hardened and ground.
- Compact design. Great clamping capacity. Light & smooth operation.
- Body is made of FCD60 ductile cast iron, High deflection/bending resistant.
- Constructed for machining center, milling, drilling, grinding and many other machine shop applications.
- Hydro line - one scale indicate about 1/3 of the max. clamp force.





NC Hydro Machine Vices

PATENT

SAME HEIGHT GUARANTEE

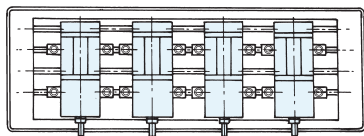
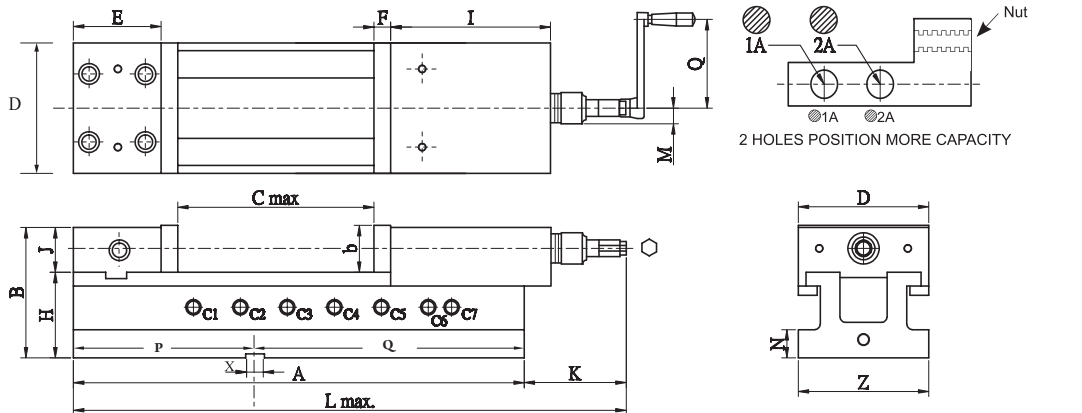


NC HYDRO MACHINE VISE

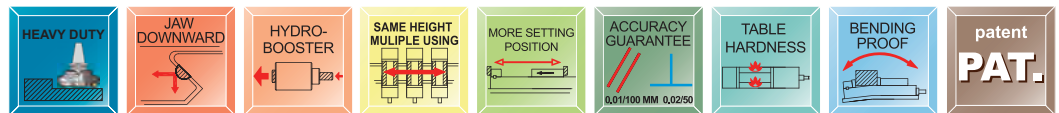
Hydraulic controller:
provide stable pressure,
Hydro indexer. Protect the hydro system.
Hydro limit proof reference scale.
Screw shaft broken proof.



Accessories:



Aligned Performance



ORDER NO.	C MAX. Open	MAX. Clamping Force KN	L MAX. mm	C Lock Pin Hole Position For Opening Jaw Size (Clamping Size Capacity)							
				Lead Screw Nut	C1	C2	C3	C4	C5	C6	C7
VNC-100H	205	25	464	1A	2-30	57-90	115-146	173-205	-	-	-
				2A	0-3	28-60	86-116	145-175	-	-	-
VNC-125H	225	40	556	1A	10-46	70-106	130-166	190-225	-	-	-
				2A	0-12	38-72	98-132	158-192	-	-	-
VNC-160H	310	50	684	1A	13-70	93-150	173-230	253-310	-	-	-
				2A	0-30	53-110	133-190	213-270	-	-	-
VNC-160LH	510	50	884	1A	13-70	93-150	173-230	253-310	333-390	410-470	450-510
				2A	0-30	53-110	133-190	213-270	293-350	370-430	410-470

ORDER NO.	A	B	D	E	F	b	H	J	N	I	Z	X	P	Q	Weight (kgs)	CODE NO.
VNC-100H	380	107	100	67	13	38	70	37	24	133	100	14	152	228	23	4005-100
VNC-125H	432	126	124	85	15	45	82	44	27	147	125	18	174	258	37	4005-101
VNC-160H	550	148	159	102	18	54	95	53	27	189	160	18	219	331	63	4005-102
VNC-160LH	750	148	159	102	18	54	95	53	27	189	160	18	219	531	77	4005-103

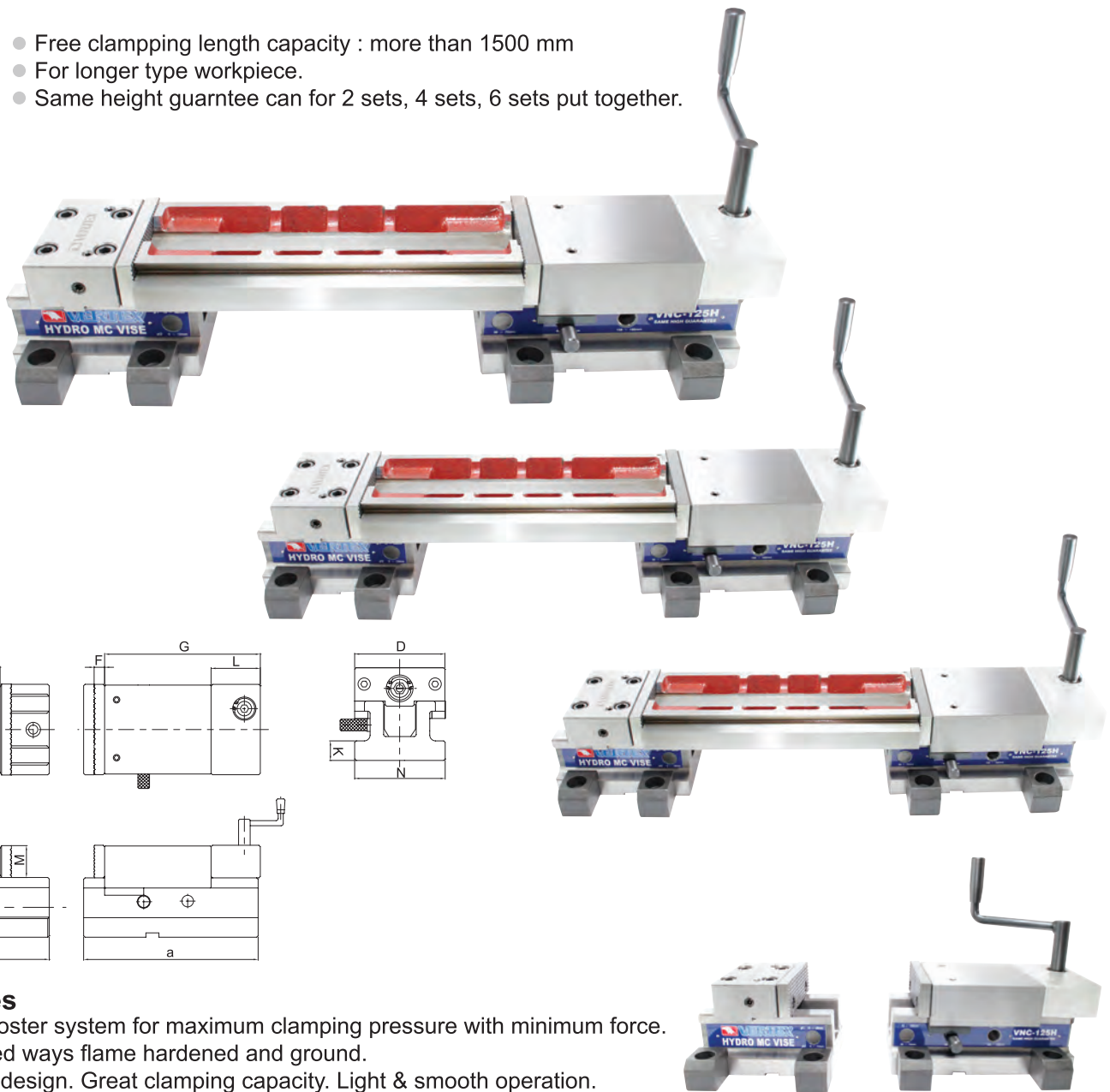


Combination MC Power Free Vise



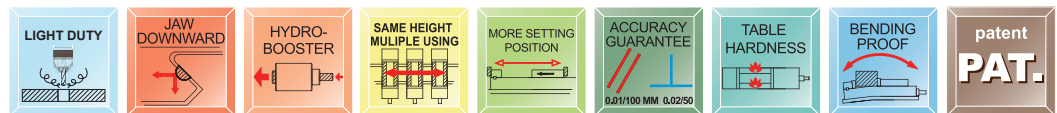
NEW

- Free clamping length capacity : more than 1500 mm
- For longer type workpiece.
- Same height guarantee can for 2 sets, 4 sets, 6 sets put together.



Features

- Hydro-booster system for maximum clamping pressure with minimum force.
- Sliding bed ways flame hardened and ground.
- Compact design. Great clamping capacity. Light & smooth operation.
- Body is made of FCD60 ductile cast iron, High deflection/bending resistant.
- Constructed for machining center, milling, drilling, grinding and many other machine shop applications.
- Free setting style.
- Handle : horizontal & vertical.
- Allow to clamp longer workpiece.



ORDER NO.	A	a	B	C	D	E	F	G	H	J	K	L	M	N	Weight kgs
VNC-100FV	150	228	103	14	99	67	13	133	70	33	24	76	34	100	19
VNC-125FV	180	250	126	18	124	85	15	147	82	44	27	78	45	125	37
VNC-160FV	200	280	148	18	159	102	18	189	95	53	27	90	54	160	63

ORDER NO.	JAW WIDTH	JAW HEIGHT	BASE HEIGHT	GUIDE BLOCK	JAW STROKE	MAX CLAMPING FORCE(KN)	CODE NO.
VNC-100FV	100	38	70	14	90	20	4005-106
VNC-125FV	125	45	82	18	106	30	4005-107
VNC-160FV	160	54	95	18	150	40	4005-108



VNC Axial Drive & Plain Jaw



Accessories For VNC Only



OPTIONAL :

AXIAL DRIVE:



- No more blocking.
- Better flexibility.
- Transfer to vertical drive.
- Extend functions.
- Compact design.
- Provide better escape while clamping.
- 90° horizontal to vertical drive.
- Light Weight & easy to install & take off.

INSTALL EXAMPLE

※Vise does not included

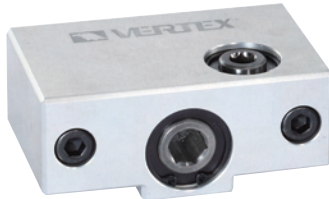
NC HYDRO MACHINE VISE



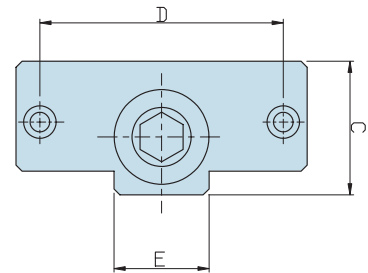
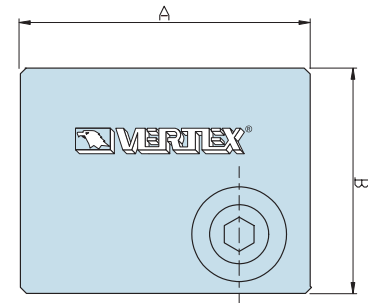
VNC-4AD



VNC-5AD



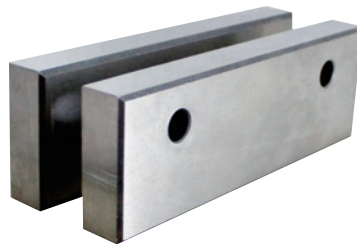
VNC-6AD



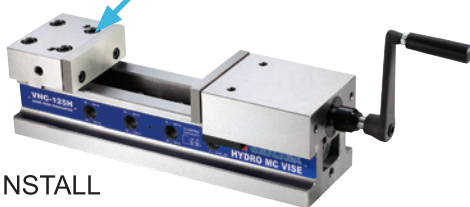
OPTIONAL : AXIAL DRIVE

ORDER NO.	A	B	C	D	E	G.W. (KG)	CODE NO.
VNC-4AD	98	76	45	82	32	1.57	4005-111
VNC-5AD	124	78	52	96	40	2.08	4005-112
VNC-6AD	158	90	61.5	126	46	2.97	4005-113

PLAIN JAW:

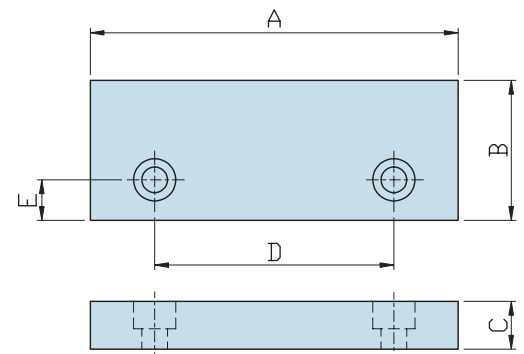


PLAIN JAW



INSTALL EXAMPLE

- Spare jaw (2 piece per set)
- Accurate Harded, Ground



OPTIONAL : PLAIN JAW 2pcs / set

ORDER NO.	A	B	C	D	E	G.W. (KG)	CODE NO.
VNC-4PJ	100	38	13	65	11	1.3	4005-121
VNC-5PJ	125	45	15	80	14	1.5	4005-122
VNC-6PJ	160	54	18	100	17	2.6	4005-123