



Precision Index Table



1. Unlock the table
2. Manually rotate
3. Settle in position
4. Lock up the table

Revolution

1. Operate the exchangeable value
2. Use the attached handle by hand
3. Set position depending on the indication, at the edge the table.
4. Make sure the position is correct, then operate the value and lock the table.



2 PCS HIRTH Coupling

VIT-450~1200 PICTURE

ORDER NO.	VIT-300-15	VIT-450-1	VIT-600-1	VIT-700-1			
		VIT-450-5	VIT-600-5	VIT-700-5	VIT-800-5	VIT-1000-5	VIT-1200-5
Table size LxW (mm)	300x300	450x450	600x600	700x700	800x800	1000x1000	1200x1200
Height (mm)	160	170	200	220	280	300	340
Spindle hole (mm)	-	ø30	ø40	ø40	ø60	ø60	ø80
T-slot (mm)	14	18	20	20	22	22	22
Table rotating	Clockwise and counterclockwise						
Table Lifting up & Clamp down stroke (mm)	5	5	5	5	5	8	8
Driving	Longitudinal	Manual					
	Revolving	Air Pressure 5~8kgs/cm ²					
Number of division (degree)	15°	1° / 5°	1° / 5°	1° / 5°	5°		
Division (sec.) Accuracy	±5"						
Max. load weight in theory (kgs)	1200	2400	3400	3400	4500	6000	7000
Allowable load weight (kgs)	500	1000	2000	2000	3000	5000	6000
Clamping capacity (kgs)	-	2200	3200	3200	5400	5400	8100
N.W. (kgs)	94	205	400	600	900	1200	2000
CODE NO. 1°	1001-070(15)	1001-071	1001-072	1001-073			
CODE NO. 5°		1001-081	1001-082	1001-083	1001-084	1001-085	1001-086

- The body is FC-35 cast iron, durable and will last longer without deformation.
- Clamping/Unclamping by pneumatic, easy operation.
- Powerful clamping design, allow heavy cutting and boring.

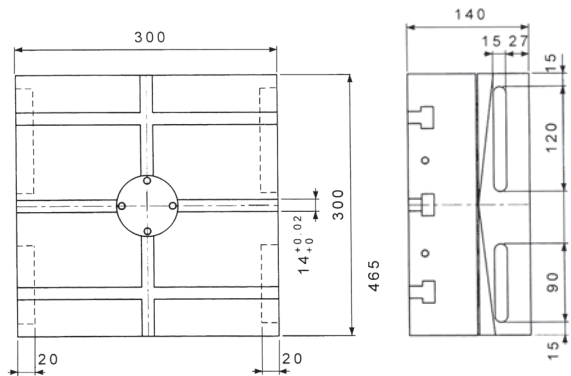
- Build-in 2 pieces hirth coupling for positioning, indexing accuracy ±3 sec, ensure a long-term operation.
- Suitable for the high accuracy machining such as Boring-Milling, Grinding-Machine.

DIMENSION

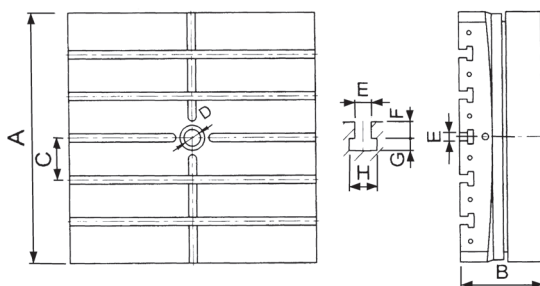
VIT-300 (PICTURE)



VIT-300



VIT-450~1200



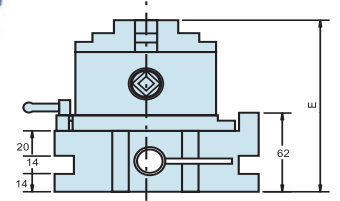
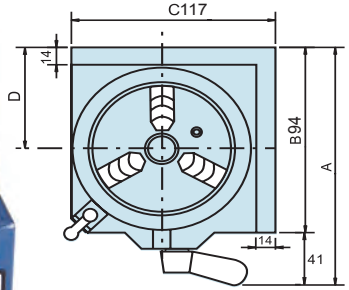
	VIT-450	VIT-600	VIT-700	VIT-800	VIT-1000	VIT-1200
A	450	600	700	800	1000	1200
B	170	200	220	280	300	340
C	100	100	125	100	150	200
D	30	40	40	60	60	80
E	18	20	20	22	22	22
F	16	20	20	23	23	23
G	12	14	14	15	15	15
H	28	35	35	38	38	38



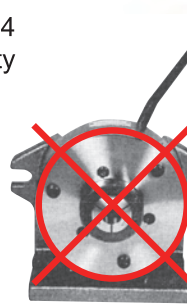
Economical Type Rapid Index



NEW VSI-3 MINI TYPE



- 3 JAW CHUCK VSC-3A for VSI-3 / VSC-4A for VSI-4 / VSC-5A for VSI-5, the big range clamping capacity $\varnothing 3 - \varnothing 100$, it's better than collet fixing type.
- Simple & rapid operation.
- Dividual number 24-notch (15° each)
- Table scale 1° , for angular indexing.
- Table bore 30mm.
- Horizontal / vertical & 2 direction
- Suit for milling & drilling machine using.
- Optional: tailstock TS-1, Please see page A2



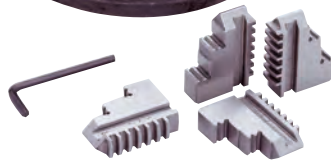
COLLET INDEXER NON ECONOMICAL

ORDER NO.	A	B	C	D	E	Through Hole	kgs	CODE NO.
VSI-3	120	94	117	47	116	$\varnothing 25$	7.5	1001-064A
VSI-4	187	146	146	80	135	$\varnothing 30$	10.5	1001-064
VSI-5	202	161	161	87	142	$\varnothing 30$	14.5	1001-065

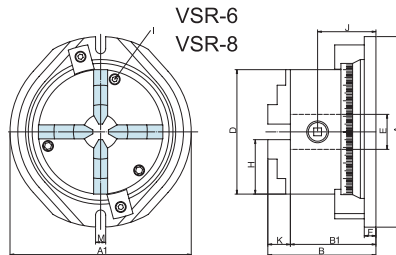


Simple Rotary Chuck

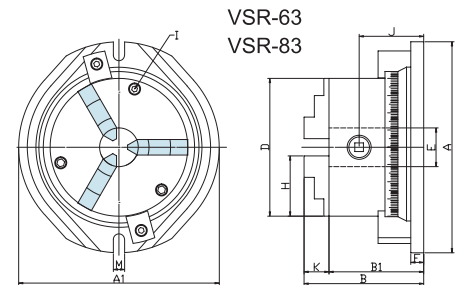
NEW



VSR-63



VSR-6 + VPS-6A 4JAW CHUCK
VSR-8 + VPS-8A 4JAW CHUCK
VSR-10 + VPS-10A 4JAW CHUCK



VSR-63 + VSC-6A 3JAW CHUCK
VSR-83 + VSC-8A 3JAW CHUCK

- 4-jaw chuck (include reversable and removable jaw) is designed with swivel base for multifunctional purpose.
- VERTEX simple rotary chuck can be placed and fixed on your desired position.
- 360° vernier scale: smooth swival motion and easy locking by screws.
- Both horizontal and vertical position could be used on milling and machining center.

ORDER NO.	FOR SHAPE	A	A1	B	B1	D	E	F	H	I	J	K	M	kgs	CODE NO.
VSR-6		242	233	139	110	160	45	15	70	3-M8	69	29	13	17.8	1001-068
VSR-8		278	270	159	125	200	65	20	86	3-M10	75	34	16	27	1001-067
VSR-10		373	355	165				22		3-M12			16	43.5	1001-069
VSR-63		242	233	139	110	160	45	15	70	3-M8	69	29	13	18	1001-068A
VSR-83		278	270	159	125	200	65	20	86	3-M10	75	34	16	30.5	1001-067A

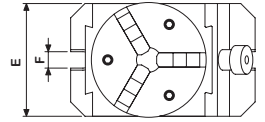
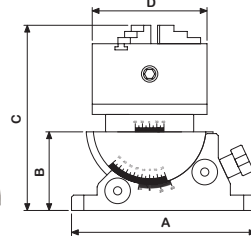


Precision Universal Angle Chuck



With VSC-4 Chuck

NEW



- With VSC-4 3-Jaw chuck.
- O.D. clamping Ø3-90 mm,
- I.D. clamping Ø32-84 mm.
- Tolerance ±0.01mm/100mm.
- 2 axis with angle scale
- For angle setting
- Chuck indexing / Rotating setting by scale.
- Tilting Features same as VUA series, Page B13.
- Load Capacity :15Kgs



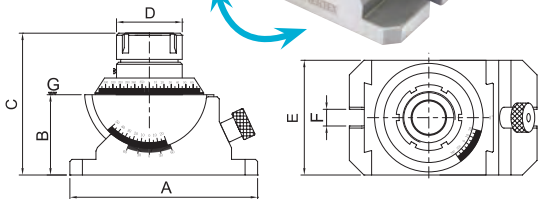
ORDER NO.	A	B	C	D	E	F	G.W (kgs)	CODE NO.
VUA-100J	180	77	181	112	110	16	14	2003-060



Precision Universal Angle Collet Chuck

Capacity Ø3-Ø30

NEW



- Tolerance ±0.01mm/100mm.
- 360° horizontal swivel, 45° vertical tilting.
- Suit for multi - angle cutting.
- Simple way for mass production.
- Hardness : HRC52°±2°
- Load Capacity :15Kgs



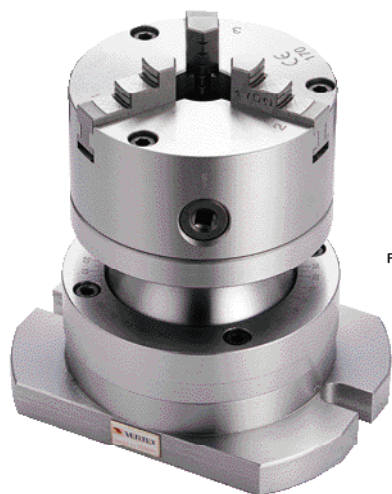
Standard Accessories: With 15pcs ER-40 Collet (4, 5, 6, 8, 10, 12, 13, 15, 16, 18, 20, 21, 22, 25, 26)

ORDER NO.	A	B	C	D	E	F	G.W (kgs)	CODE NO.
VUA-ER40	180	77	136	63	110	16	12	2003-065

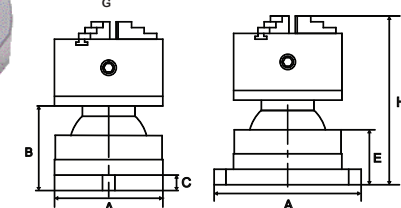
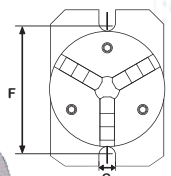


Free Angle Rotary Chuck

NEW



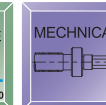
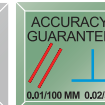
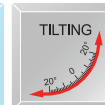
Load capacity : 15 kgs



- With VSC-4, VSC-5, 3-JAW Chuck.
- O.D. Clamping ø3-90 mm (VSC-4)
- O.D. Clamping ø3-110 mm (VSC-5)
- I.D. Clamping ø 32-84 mm (VSC-4)
- I.D. Clamping ø 35-100 mm (VSC-5)

Features:

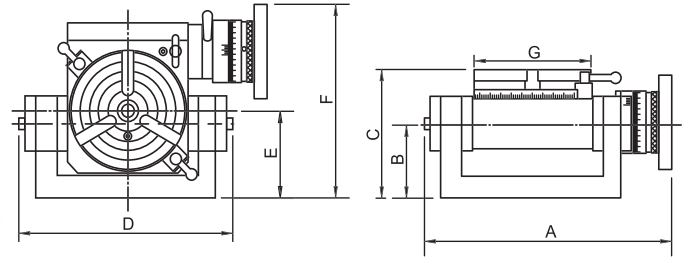
- Quick setting
- Operating is very quick and easy, can increase so much working efficiency than you can image.
- 360° Rotation, Tilting 30°
- For non-normal angle setting.
- Its swivelling and tilting features with chuck clamping make this unit for round & square, angular drilling machining on various machine tools or for bench work table.



ORDER NO.	A	B	C	D	E	F	G	H	Weight (kgs)	CODE NO.
VAV-4J	140	120	20	190	72	158	17	203	16	1002-217
VAV-5J	140	120	20	190	72	158	17	203	17	1002-218



Universal Tilting Rotary Table



- Tilting range 0°-90° degrees from horizontal to vertical position, It is high rigidity.
- Minimum Set-up time: It has two screws to lock setting. Low profile body for bigger capability.
- Worm is hardened and ground. The ratio is 90:1. The work table is graduated a full 360° so that of the handle moves the table through 4°. Micro collar is graduated in steps of 2' min.
- The tailstock & Dividing plates are optional. The sizes is same as the rotary table, please see page A2.
- For arc or index cutting at milling machine, Grinding machine or drill Machine.....

TILTING ROTARY TABLE

OPTIONAL:

Please see page A3

1. TAILSTOCK 2. DIVIDING PLATE

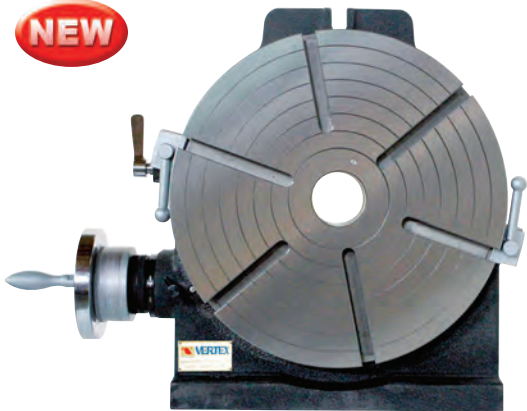
ORDER NO.	CODE NO.	ORDER NO.	CODE NO.
TS-1	1001-022	*DP-1 for VU-100, 150	1001-030
TS-3	1001-024	*DP-2 for VU-200	1001-031



ORDER NO.	A	B	C	D	E	F	G	SUITABLE TAILSTOCK	SUITABLE DIVIDING PLATE	WEIGHT kgs/cuft	CODE NO.
VU-100	228	68	117	210	80	177	110	TS-1	DP-1	13.5 / 1.5	1001-011
VU-150	266	75	140	250	90	216	150	TS-1	DP-1	21.5 / 2.0	1001-012
VU-200	429	111	177	432	141	283	205	TS-3	DP-2	46 / 2.5	1001-013



Big Through Hole / Fast Indexing Rotary Table



Feature:

- Center Bore = ø65mm
- For the long bar & other work piece need BIGGER BORE size.
- Multiple purpose.
- Fast dividing function : 15° division by handle x 24/360°
- Improve efficiency, save cost.
- Upgrade your millig machine to speed up production.

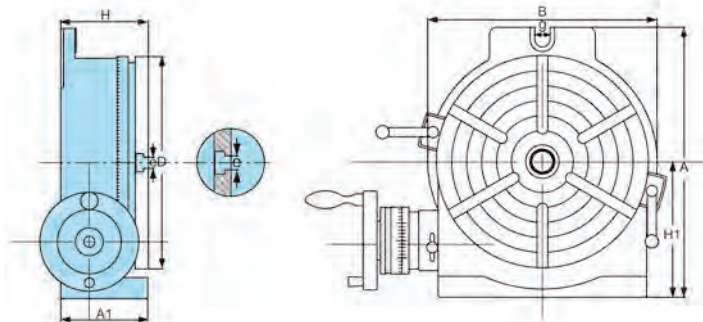
SPECIFICATIONS	HVD-400
Degree per one handle rotation	4°
Scale of micro collar	1'
vernier reading	10''
Gear ratio	1:90



15° DIVISION



New Model



Specifications

ORDER NO.	Through Center hole	Numbers of dividing	A1	Rotary Table		Base dimension			Width of T-slot		Bolt slots	The load capacity for rotary table		Weight (kg)		CODE NO.
				Outer diameter D	Height H	H1	A	B	e	TYPE		g	Horizontal	Vertical	N.W.	
HVD-400	ø65	15°	128	406	130	255	500	435	16		18	140kgs	70kgs	122	1001-110	



Hydraulic Machine Vise



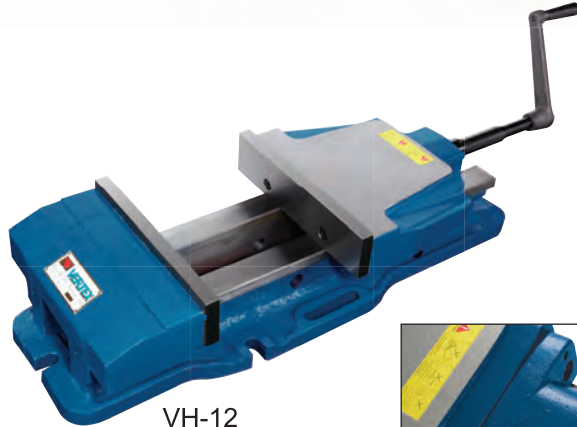
- New design: Adjustable pressure device.
- Jam proof system.
- Hydro limit proof.
- Screw shaft broken proof



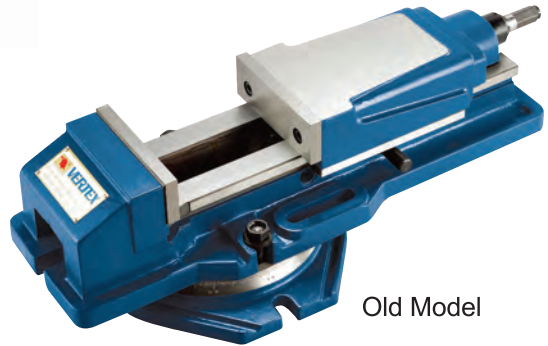
New Model For Next



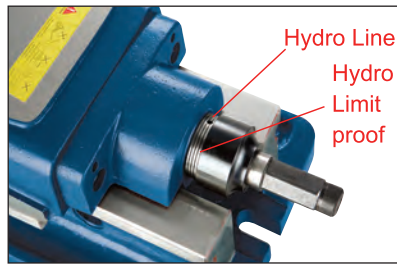
VH-6



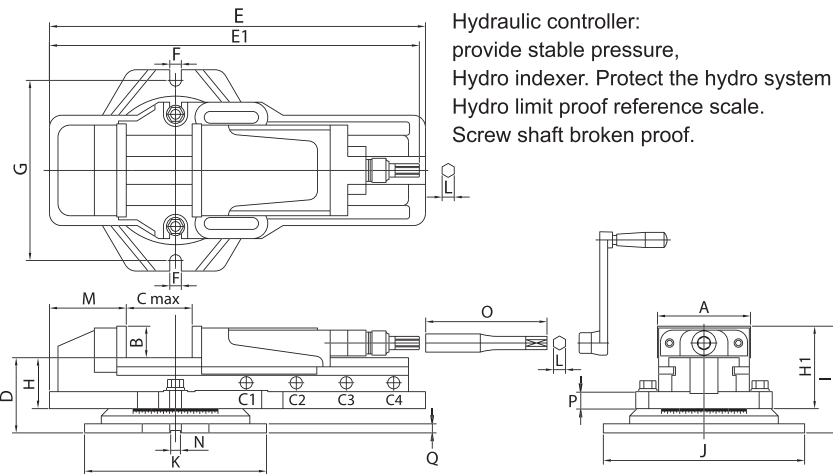
VH-12



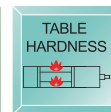
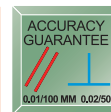
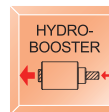
Old Model



Hydraulic controller:
provide stable pressure,
Hydro indexer. Protect the hydro system.
Hydro limit proof reference scale.
Screw shaft broken proof.



- New design: jam proof system: prevent wrong clamping force sticks the vise.
- Constructed for milling, drilling, shaping, grinding and many other machine shop applications.
- Sliding bed ways flame hardened and ground.
- Concealed spindle for protection against chips and dirt.
- Hydraulic-booster system for maximum clamping pressure with minimum force.
- Quick of clamping & locking and easy of operation.
- Accuracy within 0.02mm.
- Furnished with or without swivel base.
- Hydraulic-booster system is guaranteed for using 1 years limited.
- The hydraulic oil number is #68.
- Hydro line - one scale indicate about 1/3 of the max. clamp force.
- In order to ensure the accurence when using it' better that don't put swivel base together



Order No. & Dimensions

ORDER NO.	A	B	C max	Opening Size For Capacity				D	E	E1	F	G	H	H1	I	J	K	L	M	N	O	P	Max. Clamp Force (kgf)	G.W. (kgs)	CFT (cm)	CODE NO.
				C1	C2	C3	C4																			
VH-4	108	36	170	0-58	58-115	115-170		98	443	583	14	235	58	95	135	270	240	14	110	16	156	22	2500	28	45x25x16	1002-001
VH-5	132	48	215	0-70	70-145	145-215		113	550	703	17	253	70	118	161	290	263	19	124	16	165	22	4500	47	56x28x18	1002-002
VH-6	151	54	300	0-100	100-200	200-300		124	620	810	19	298	82	136	176	332	300	19	126	16	200	30	4500	63	65x34x22	1002-003
NEW VH-6L	151	54	355	0-100	100-200	200-300	300-355	124	620	850	19	298	82	136	176	332	300	19	126	16	200	30	4500	63	65x34x22	1002-007
VH-8	204	62	300	0-100	100-200	200-300		144	680	857	17	342	100	162	206	375	350	19	155	16	200	30	7500	110	71x38x25	1002-004
NEW VH-8L	204	62	400	0-100	100-200	200-300	300-400	144	795	950	17	342	100	162	206	375	350	19	155	16	200	30	7500	108	84x42x30	1002-005
NEW VH-12	305	72	375	0-75	75-175	175-275	275-375	144	795	950	17	342	100	162	206	375	350	19	170	16	200	30	7500	138	84x35x27	1002-006



Tilting Hydraulic Machine Vise



PATENT

New Design

- Jam proof system
- Great smooth operation
- Hydro limit proof.
- Screw shaft broken proof



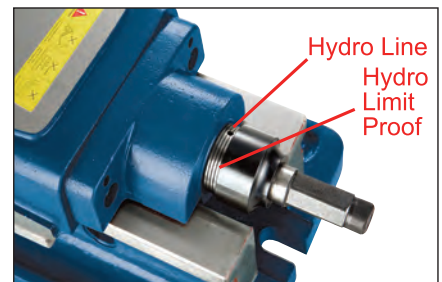
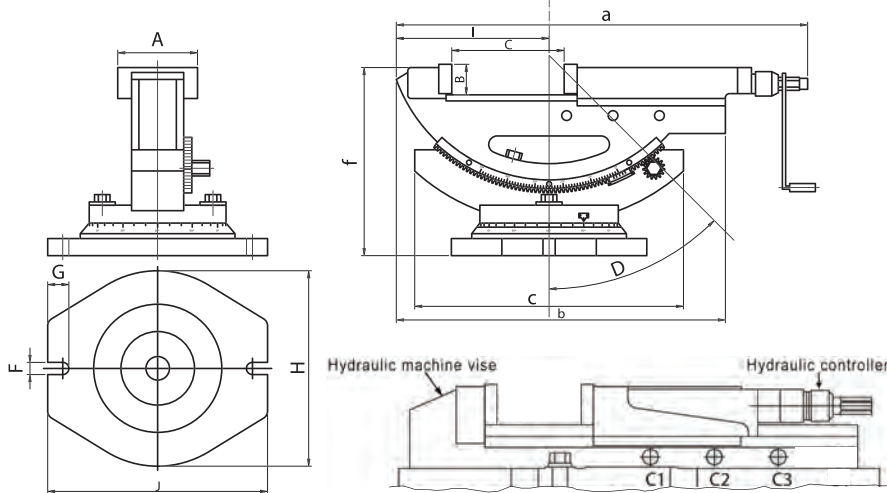
VHT-4



VHT-6

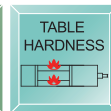
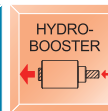
TILTING ADJUSTABLE BY GEAR SYSTEM

50°



Hydraulic controller: provide stable pressure, Hydro indexer. Protect the hydro system. Hydro limit proof reference scale. Screw shaft broken proof.

- The same as characters of VH type. Swivel base same as VH type.
- Tilting seat set by two locking screws, works in high stability.
- Angle setting ranges from 0°~50°. Tilting degrees graduated for easy reading. Swivel base graduated to 360° and fixable in any position.
- THE (3 STEPS CLAMPING POSITION) SAME AS VH TYPE.
- Accuracy within 0.02mm
- Hydraulic-booster system is guaranteed for using 1 years limited.



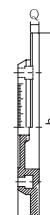
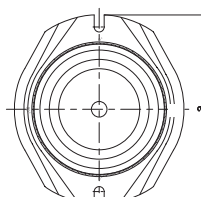
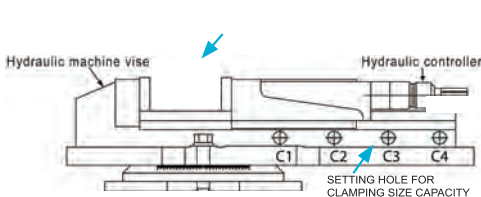
ORDER NO.	A	B	C OPEN	Opening Size For Capacity			D	E	F	G	H	J	a	b	c	f	Max. Clamp Force (kgf)	G.W. (kgs)	Meas CFT	CODE NO.
				C1	C2	C3														
VHT-4	110	36	170	0-58	56-115	113-170	50°	15	15	26	240	270	500	404	335	230	2500	(W)33.3	1.2	1002-020
VHT-6	154	54	300	0-100	98-200	198-300	50°	20	19	28	300	330	800	585	415	290	4500	(W)88	4.4	1002-021

CLAMPING CAPACITY (3 STEPS CLAMPING POSITION FIG)

Swivel base

Swivel base

Unit:mm



ORDER NO.	a	b	c	n	Q	G.W. (kg)	CODE NO.
HS-4	280	210	30	16	15	6.5	1002-010
HS-5	297	267	43	16	20	8	1002-011
HS-6	335	310	40	16	20	11	1002-012
HS-8	373	355	45	16	22	12	1002-013



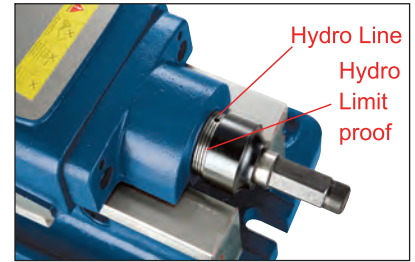
Universal Tilting Hydraulic Machine Vise



NEW

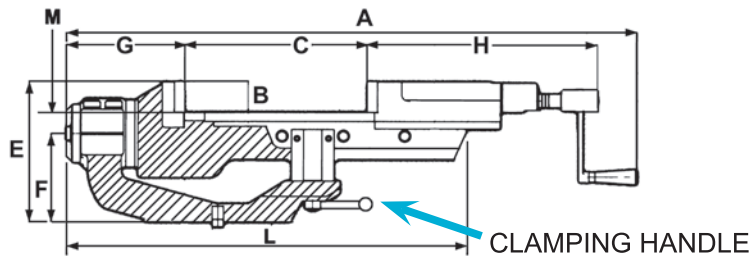
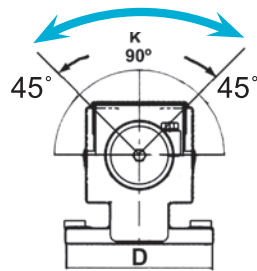
PATENT

- JAM PROOF
- HYDRO LIMIT PROOF.
- SCREW SHAFT BROKEN PROOF

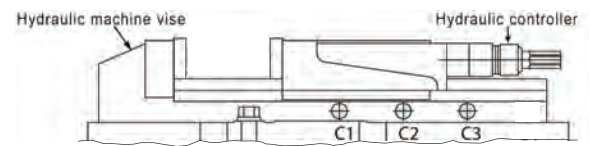


Hydraulic controller: provide stable pressure, Hydro indexer. Protect the hydro system. Hydro limit proof reference scale. Screw shaft broken proof.

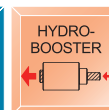
LEFT RIGHT



CLAMPING HANDLE FOR TILTING



- New design: adjustable pressure device.
- Suit for processing of brass, AL, plastic, steel.
- New design: super open jaw size, smallest open jaw size.
- Lock proof system: prevent wrong clamping force sticks the vise.
- 45 Degree tilting function by hand, allow 90 degree processing!
- Tilting function has more work free allowance will not block or hit machine!
- Lower overall height provides more space for heavy cutting stability and bigger workpiece!
- Tilting structure has strong tightening design.
- All function same as VH series. Except the tilting Structure.



ORDER NO.	A	B	C OPEN	Opening Size For Capacity			D	E	F	G	H	M	L	Max. Clamp Force (kgf)	K Max. Degree	G.W. (kgs)	CODE NO.
				C1	C2	C3											
VHT-4U	690	36	170	0-58	56-115	113-170	ø165	175	102	130	290	36	440	2500	90°	38.5	1002-025
VHT-6U	940	54	300	0-100	98-200	198-300	ø225	235	137	150	375	48	615	4500	90°	93.96	1002-026



Hydraulic Machine Vise

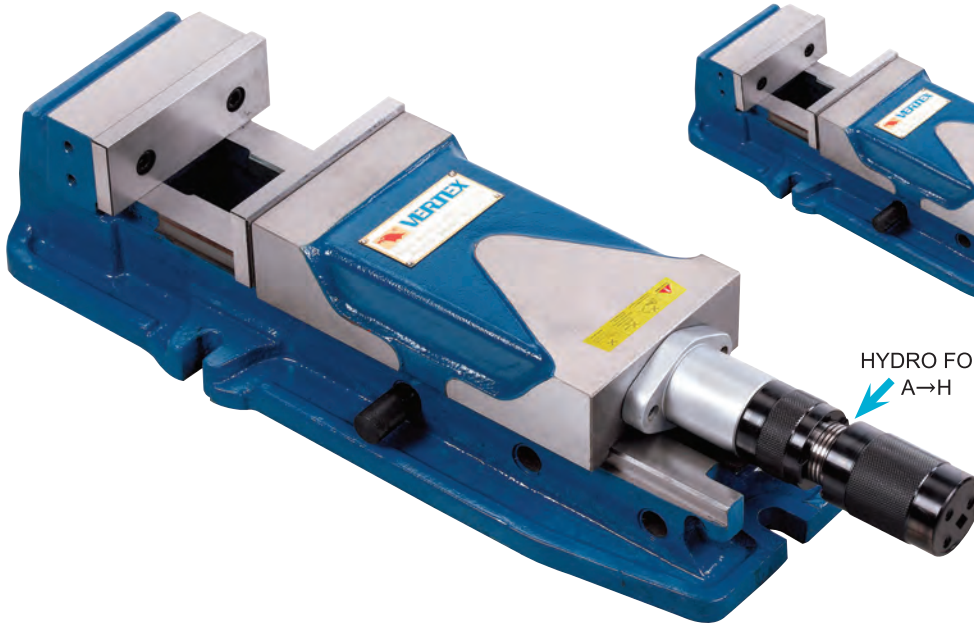
HYDRO + MECHANICAL

PAT.

Power Build Out Type

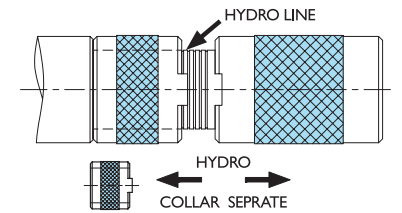
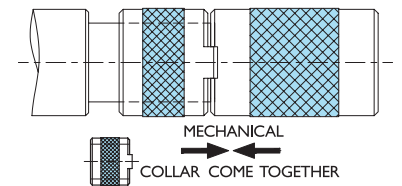


HYDRAULIC MACHINE VISE



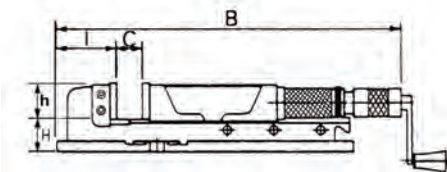
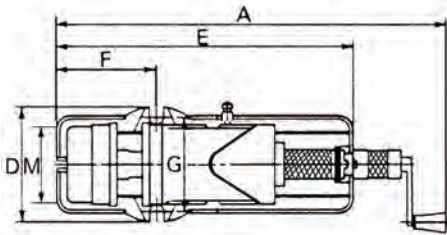
HYDRO FORCE INDICATOR
A→H

COLLAR OPERATE



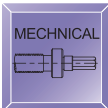
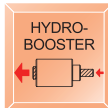
MECHANICAL USEING

SUIT FOR PROCESSING OF
BRASS, AL, PLASTIC, STEEL,
CASTING



Features

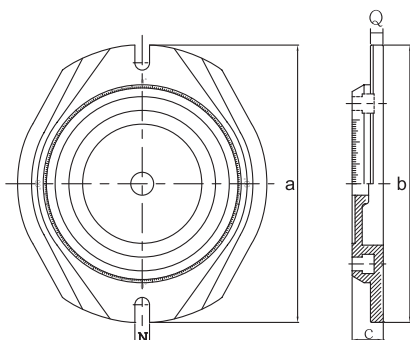
- Hydro : move the spindle ring until see the hydro line to work vise.
- Mechanical : move the spindle ring toward the end until the bushing close the hydro line.
- Heavy duty cutting.
- Hardness > HRC 45° : vise sliding bed.
- High durability & high precision.
- Tolerance : 0.01/100mm
- Lift proof : press down design.
- FCD 60 with 60 kgs/mm² or 80,000 psi high quality ductile cast iron - body material - reduce the cutting vibration.



VHO-VISE

ORDER NO.	A	B	C OPEN	D	E	F	G	H	I	M	h	Jaw w	Max. Clamp Force (kgf)	N.W. (kgs)	CODE NO.
VHO-5	695 920	545 775	0-220	190	505	180	160	74	105	130	55	130	3500	36.5	1002-220
VHO-6	750 1060	600 915	0-300	240	625	208	196	80	125	160	58	160	4000	59.1	1002-221
VHO-8	830 1140	700 1015	0-310	280	700	265	240	100	165	200	63	200	5000	94.3	1002-228

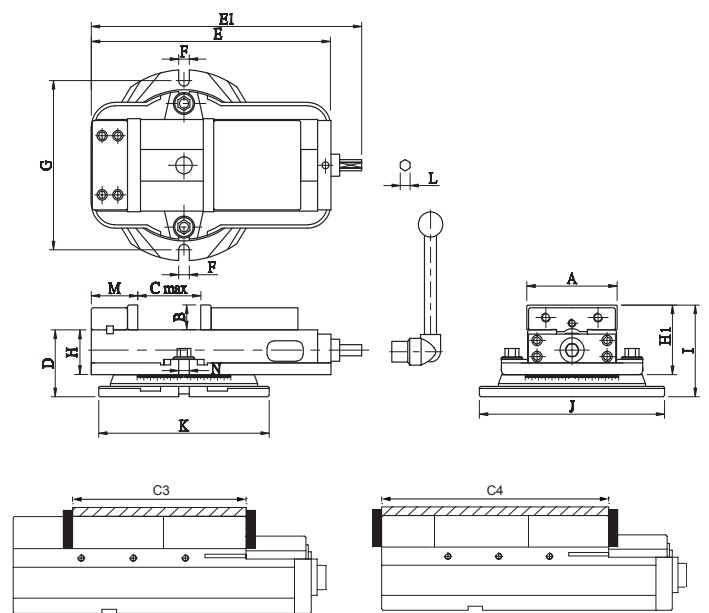
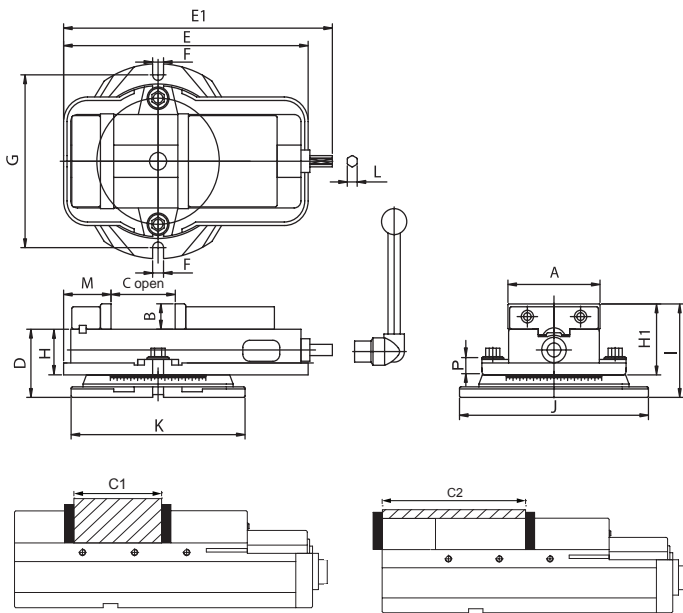
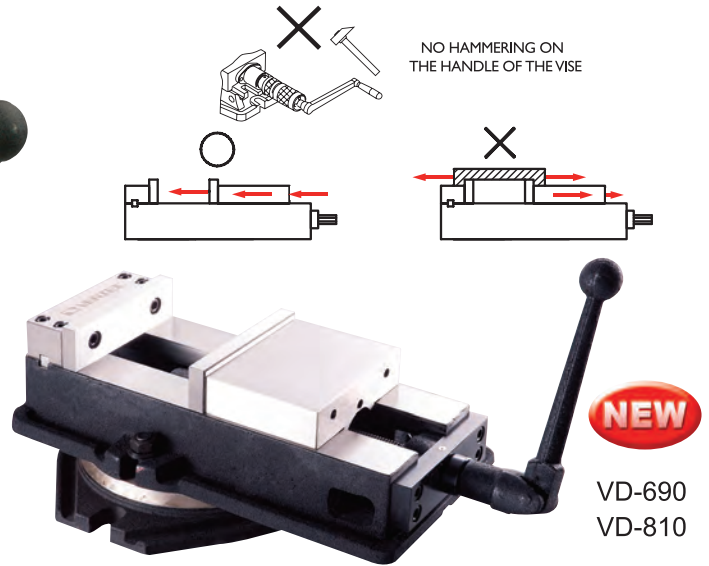
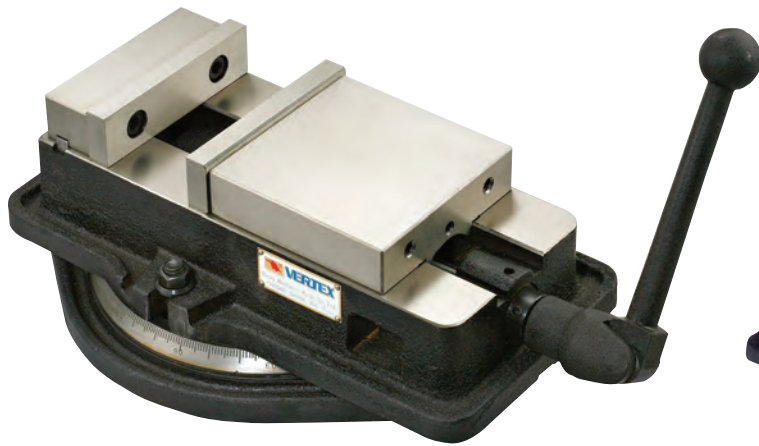
Optional : Swivel Base



ORDER NO.	a	b	c	n	Q	G.W. (kgs)	CODE NO.
HSO-5	297	267	43	16	20	8	1002-222
HSO-6	335	310	40	16	20	11	1002-223
HSO-8	373	355	45	16	22	12	1002-229



Ang-Fixed Milling Vise



- The enclosed lead screw and sliding surface are harden and ground.
- Highest clamping power. It's very accurate and durable.
- This Vise is so designed that the horizontal Force generated by tightening the handle pushes the semisphere within the movable jaw and thus thrusts the movable jaw downward - angle lock feature.
- There fore, the workpiece does not lift, even if it is held at the top of the jaw plates.
- Four setting positions of the jaw plates are available, widening the jaw plates opening.
- ACCURACY WITHIN 0.02mm
- Mini order quantity : 3 sets for same height by request.
- In order to ensure the accurence when using it' better that don't put swivel base together

JAW DOWNWARD

MORE SETTING POSITION

ACCURACY GUARANTEE

0.01/100 MM 0.02/50

TABLE HARDNESS

BENDING PROOF

MECHANICAL

Order No. & Dimensions

ORDER NO.	A	B	C OPEN	D	E	E1	F	G	H	H1	I	J	K	L	M	N	P	MAX. Clamp Force (kgf)	G.W. (KG)	C.F.T. (CM)	CODE NO.
VA-4	106	36	103	90	324	351	13	211	60	96	126	242	228	14.5	75	16	15	1500	20	35x24x15	1002-030
VA-5	135	36	110	97	359	394	17	246	65	101	133	277	255	14.5	85	16	15	2000	30	41x31x17	1002-031
VA-6	155	46	150	110	422	452	20	288	72	118	158	326	302	19	95	16	17	2500	42	49x35x20	1002-032
VA-8	205	62	210	129	553	583	19	355	85	147	191	395	366	19	105	16	27	3000	80	63x41x24	1002-033
VD-675	160	49	190	110	445	478	19	296	72	121	160	333	305	19	80	16	17	2500	42	52x35x21	1002-034
NEW VD-690	155	46	230	110	450	480	20	288	73	118	158	326	302	19	67	16	17	2300	43	49x35x20	1002-034B
NEW VD-810	205	62	275	129	555	615	19	378	85	147	191	420	377	19	79	16	27	3000	76	63x41x24	1002-035B

