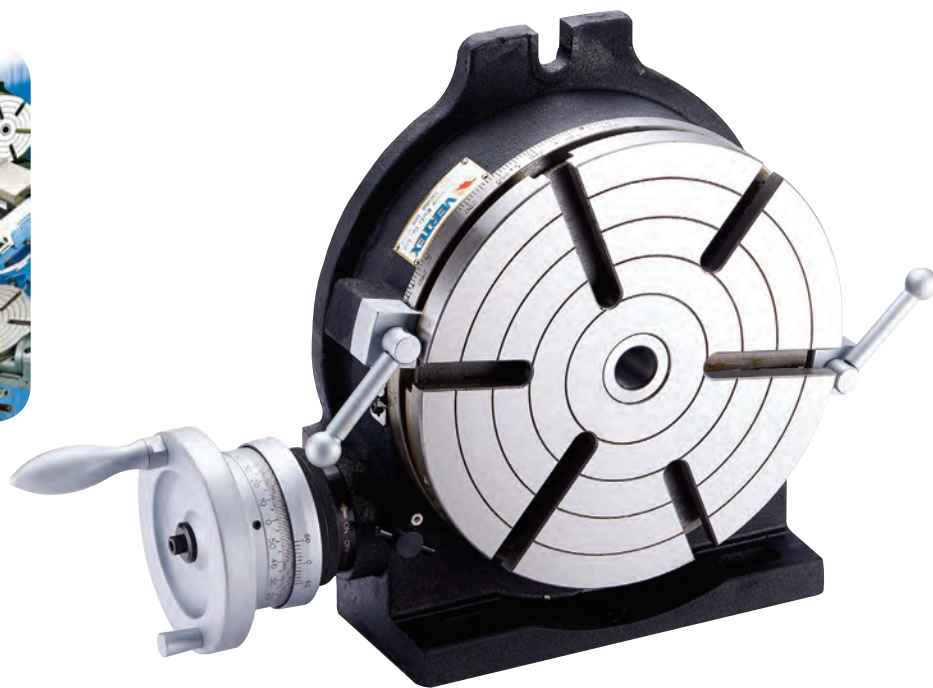
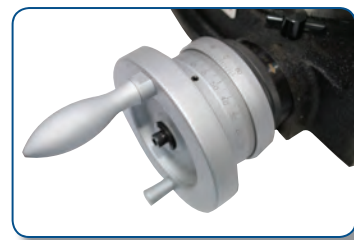




Horizontal / Vertical Rotary Table



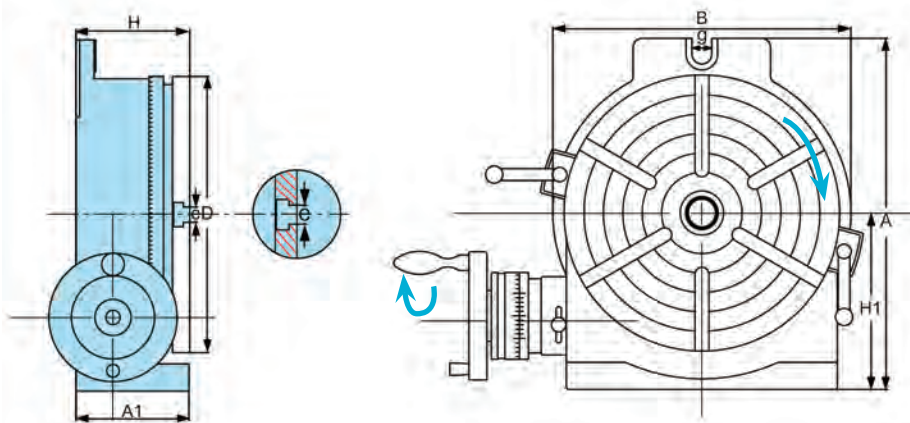
HV-6, 8, 10, 12, 14, 16



New Model



HV-4



SPECIFICATIONS	HV-4,6	HV-8,10,12,14,16
Degree per one handle rotation	4°	4°
Scale of micro collar	2'	1'
vernier reading	20"	10"
Gear ratio	1:90	1:90

Specifications

ORDER NO.	A1	Rotary Table		Base dimension			Width of T-slot		Bolt slots	The Load Capacity For Rotary Table		Center sleeve	Gross Weight(kg)		Meas. CFT	CODE NO.	
		Outer diameter D	Height H	H1	A	B	e	Type		g	Horizontal		Vertical	wooden case(W)			Carton(C)
HV-4	58	110	72	80	138	118	11	⊕	17	35 KGS	18 KGS	MT-2	7KGS	7.5KGS (C)	0.3	1001-000	
HV-6	78	150	80	102	205	163	11	⊕	17	40 KGS	20 KGS	MT-2	12.1KGS	12.7KGS (C)	0.4	1001-001	
HV-8	100	205	102	135	265	219	14	⊕	17	80 KGS	40 KGS	MT-3	24.7KGS	26.2KGS (C)	0.8	1001-002	
HV-10	106	254	109	163	321	276	14	⊗	17	90 KGS	50 KGS	MT-3	35.5KGS	37.3KGS (C)	2	1001-003	
HV-12	123	305	125	194	388	330	16	⊗	18	120 KGS	60 KGS	MT-4	58.7KGS	69.8KGS (W)	2.6	1001-004	
HV-14	123	353	125	225	445	389	16	⊗	18	130 KGS	70 KGS	MT-4	76.61KGS	90.3KGS (W)	3.2	1001-005	
HV-16	128	406	130	255	500	435	16	⊗	18	140 KGS	70 KGS	MT-4	106.4KGS	123.1KGS (W)	4.2	1001-006	

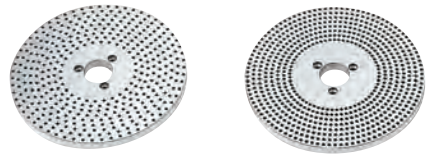


Optional Accessories (Details on page A3)



Flange

Tailstock



Dividing Plate



3-Jaw Chuck For Rotary Table, Indexer

- Detail specification & Order NO. shown on page E9
- The Fixing Hole is From Front



ORDER NO.

- VSC-5A SUIT FOR BS-0 OR HV-6, VUT-6, VU-150
- VSC-6A SUIT FOR BS-1 OR HV-8, 10, VU-200
- VSC-7A, 8A SUIT FOR BS-2 OR HV-10, 12, 14, VUT-10, 12
- VSC-10A SUIT FOR HV-14, 16

Reversible type

- For indexer, The fixing hole is from front.



ORDER NO.

- VSK-6A SUIT FOR CS-6, CC-6
- VSK-8A SUIT FOR CS-8, CC-8
- VSK-12A SUIT FOR CC-12

EXAMPLE :



W/O Flange

W/ Flange

W/ Dividing Plate

- Our Tables are made of high density Meehanite inspect angle to assure the excellent quality and durability.
- Use excellent machining center to process. Spindle end be applied accuracy bearing. Can be assured to keep very steady under load cutting.
- Worm is hardened and ground. The ratio is 90:1. The work table is graduated a full 360° so that one turn of the handle moves the table through 4°. Micro collar is graduated in steps of 1' min. And vernier scale makes settings down to 10 seconds possible.
- These Rotary Tables are popular for their excellent performance, practical design and reasonable cost. They are widely used for circular cutting work, angle setting, boring, spot-facing and similar work.
- Indexing accuracy of direct Indexing mechanism Maximum cumulative spacing error 1 minute.
- Please choose Front-Lock 3 Jaw chuck only.

ITEM NO.	TESTING OBJECTIVE	VARIATION(PER100mm) MAXIMUM TESTED
1	PARALLELISM OF CLAMPING SURFACE TO BASE	±0.02
2	FLATNESS OF CLAMPING SURFACE(CONCAVE)	±0.015
3	TRUE RUNNING OF CLAMPING SURFACE	±0.015
4	TRUE RUNNING OF CENTER HOLE MEASURED AT HOLE EDGE	±0.02
5	SQUARENESS OF CLAMPING SURFACE TO ANGLE FACE	±0.02

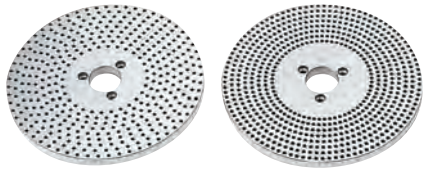


Optional For Rotary Table



A. DIVIDING PLATES

DP-2, 3, 4, 5



*DP-2 set include index plate, crank handle, 3 pcs screw, sector, & U Washer.

1 carton with 1 set. Gross weight: 3.5kgs.

Meas.: 0.13 CFT.

Number of the holes of Dividing Plates

EXAMPLE :



ORDER NO.	SUIT FOR MODEL	WEIGHT kgs	CODE NO.
*DP-2	for HV-8, VU-200	4.5	1001-031
DP-3	for HV-10, 12, 14, 16, VUT-10, VUT-12	4.6	1001-032
DP-4	for CS-6, 8	4.6	1001-033
DP-5	for VU-300	4.6	1001-034

Holes Number

A-Plate	26, 30, 34, 38, 41, 44, 47, 51, 57 28, 32, 37, 39, 43, 46, 49, 53, 59
B-Plate	61, 67, 71, 77, 81, 87, 91, 97 63, 69, 73, 79, 83, 89, 93, 99

A. DIVIDING PLATES

DP-1

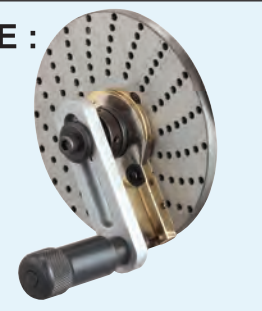


Holes Number

A-Plate	15, 16, 17, 18, 19, 20
B-Plate	21, 23, 27, 29, 31, 33
C-Plate	37, 39, 41, 43, 47, 49

ORDER NO.	SUIT FOR MODEL	WEIGHT kgs	CODE NO.
*DP-1	for HV-4, HV-6, VUT-6, VU-100, 150	1.4	1001-030

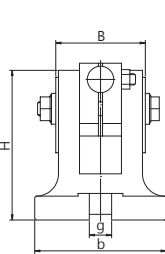
EXAMPLE :



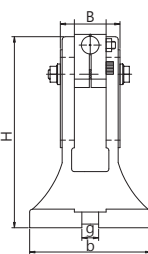
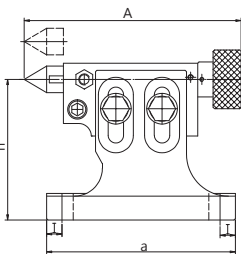
B. TAILSTOCK



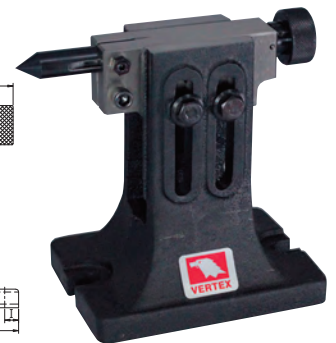
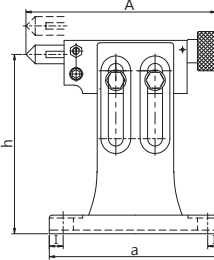
TS-1



TS-1



TS-2~TS-4



TS-3

Tailstock

Unit:mm

ORDER NO.	adjustable(h)		A	B	H	I	a	b	g	SUIT FOR MODEL	G.W. kgs	Meas. CFT	CODE NO.
	highest	lowest											
TS-1	108	80	155-180	64	107	11	134	94	16	HV-4, HV-6, VSI-4, VSI-5, BS-0, VUT-6, VU-100, VU-150	3.9	0.4	1001-022
TS-2	150	115	170-195	64	150	11	155	110	16	BS-1, CC-6, CS-6, HV-8	5.5	0.4	1001-023
TS-3	205	130	210-235	64	205	13	185	138	16	CS-8, HV-10, HV-12, CC-8, VUT-10, VUT-12, VU-200	8.1	0.4	1001-024
TS-4	260	182	210-235	75	260	17	205	144	16	HV-14, CC-12, HV-16	11.9	0.7	1001-025

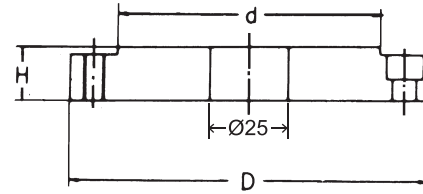
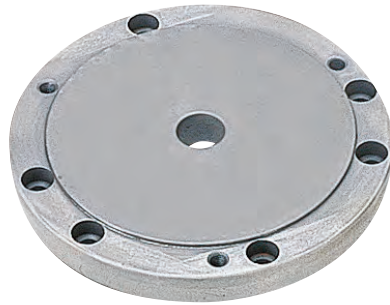


Optional For Rotary Table



-0.035
-0.015
d FOR 3 JAW CHUCK

C. FLANGE



- FLange for VSC-A TYPE
- FLT-103 For VSC-3F FLT-103A For VSC-3A
 - FLT-104 For VSC-4F FLT-104A For VSC-4A
 - FLT-0 For VSC-5F FLT-0A For VSC-5A
 - FLT-1 For VSC-6F FLT-1A For VSC-6A
 - FLT-2 For VSC-7F FLT-2A For VSC-7A
 - FLT-3 For VSC-8F FLT-3A For VSC-8A

Flange

Unit:mm

ORDER NO.	D	d	H	SUIT FOR MODEL	WEIGHT kgs	CODE NO.
FLT-103	90	60	20	HV-4 VU-100	0.71	1001-036
FLT-104	113	80	20	HV-6 VU-150, VUT-6	1.0	1001-037
FLT-0	138	100	20	HV-6, 8 VU-150,200, VUT-6	1.9	1001-040
FLT-1	170	130	21	HV-8, 10 VU-200, VUT-10	3.3	1001-041
FLT-2	195	155	24	HV-10, 12, 14 VUT-10,12	5.2	1001-042
FLT-3	210	160	24	HV-10,12, 14, 16 VUT-12	4.9	1001-043

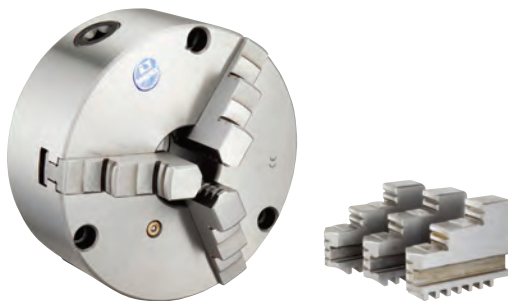
Unit:mm

ORDER NO.	D	d	H	SUIT FOR MODEL	T-NUT SIZE	BOLT	WEIGHT kgs	CODE NO.
FLT-103A	90	55	20	HV-4 VU-100	M8x10 3412M	M8x20L	0.71	1001-044
FLT-104A	113	72	20	HV-6 VU-150, VUT-6	M8x10 3412M	M8x20L	1.0	1001-045
FLT-0A	138	100	20	HV-6, 8 VU-150,200, VUT-6	M8x10 3412M	M8x20L	1.9	1001-046
FLT-1A	170	130	21	HV-8, 10 VU-200, VUT-10	M10x14 SPECIAL SIZE	M10x25L	3.3	1001-047
FLT-2A	195	155	24	HV-10, 12, 14 VUT-10,12	M10x14 SPECIAL SIZE	M10x25L	5.2	1001-048
FLT-3A	210	165	24	HV-10,12, 14, 16 VUT-12	M10x16 SPECIAL SIZE	M10x30L	4.9	1001-049

D. 3 JAW CHUCK

3-Jaw Chuck For Rotary Table, Indexer Economical Type

● Detail specification & Order NO. shown on page E9



ORDER NO.

- VSC-3A SUIT FOR HV-4, VU-100(FLT-103A)
- VSC-5A SUIT FOR BS-0 OR
 HV-6, VUT-6, VU-150(FLT-0A)
- VSC-6A SUIT FOR BS-1 OR
 HV-8, 10, VU-200(FLT-1A)
- VSC-7A, 8A SUIT FOR BS-2 OR
 HV-10, 12, 14, VUT-10, 12(FLT-2A,FLT-3A)
- VSC-10A SUIT FOR HV-14, 16

Reversible type

For indexer, The fixing hole is from front.

ORDER NO.

- VSK-6A SUIT FOR CS-6, CC-6
- VSK-8A SUIT FOR CS-8, CC-8
- VSK-12A SUIT FOR CC-12

ORDER NO.	D-Size	d1	d2	THREAD	SUIT FOR MODEL
VSC-5A	130mm(5")	115	100	3-M8	BS-0, HV-6,VUT-6, VU-150
VSC-6A	160mm(6")	142	130	3-M8	HV-8, HV-10, VU-200
VSC-7A	190mm(7 1/2")	172	155	3-M10	BS-2, HV-10,12,14, VUT-10,12
VSC-8A	200mm(8")	180	165	3-M10	
VSC-10A	250mm(10")	225	206	3-M12	HV-14,16

ORDER NO.	D-Size	d1	d2	THREAD	SUIT FOR MODEL
VSK-6A	160mm(6")	142	130	3-M8	CS-6, CC-6
VSK-8A	200mm(8")	180	165	3-M12	CS-8, CC-8
VSK-12A	315mm(10")	285	260	3-M16	CC-12

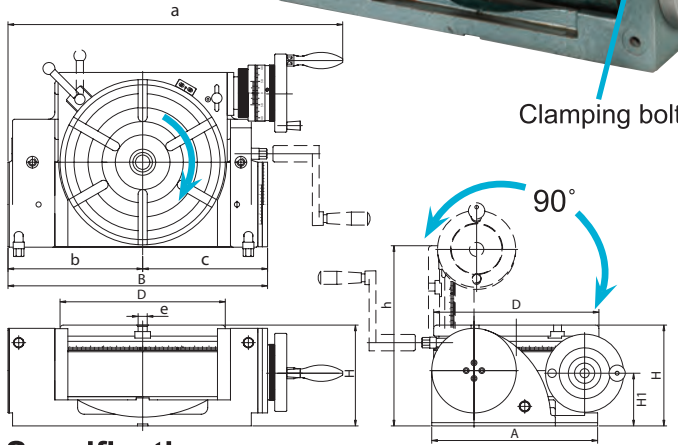
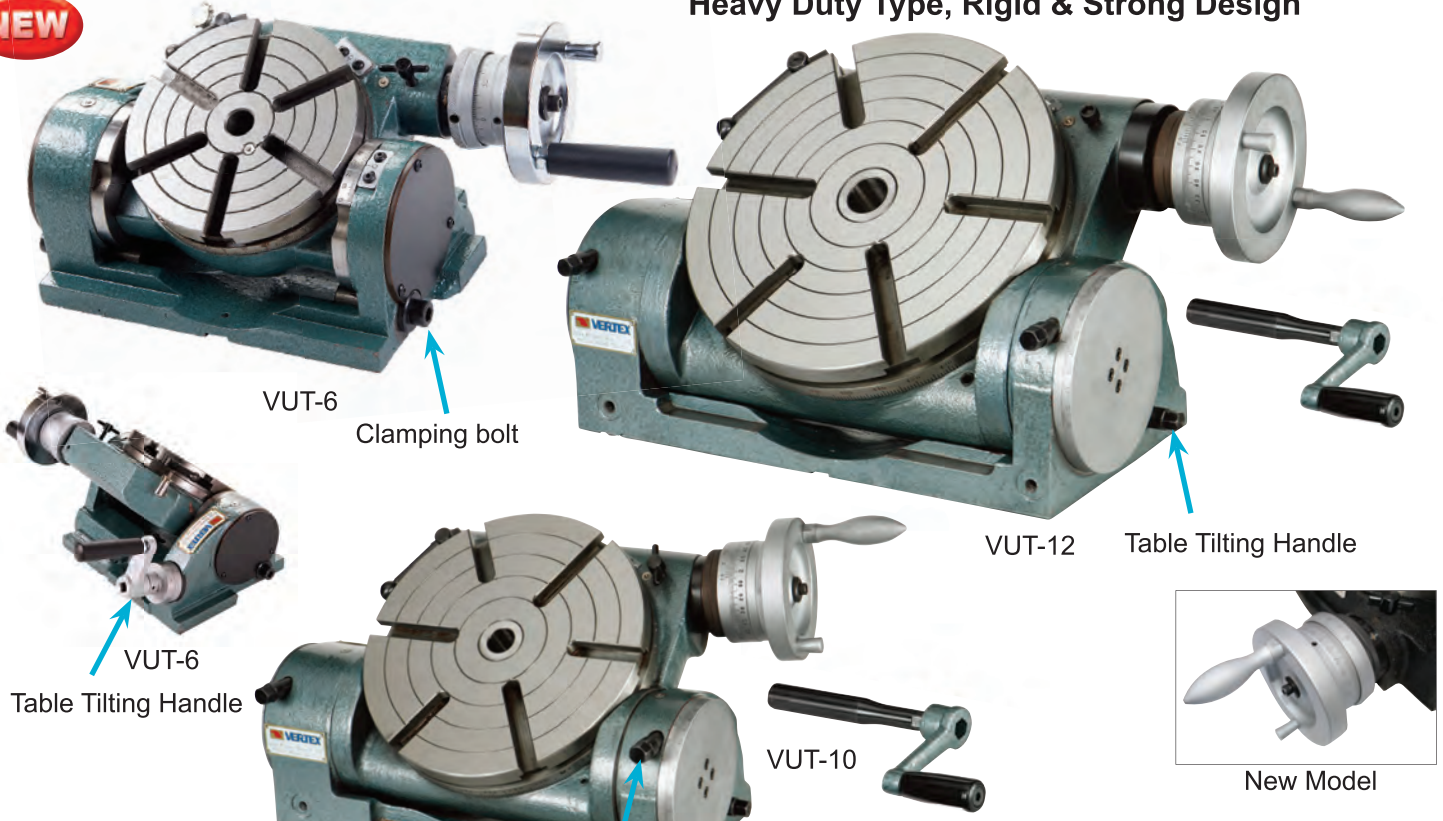


Tilting Rotary Table



Heavy Duty Type, Rigid & Strong Design

NEW



- Low profile, low center height.
- Tilting by rigid & strong design, 2 supporter & rigid clamping system construction.
- Minimum set-up time.
- Tilting angle can adjusted by worm & worm gear system.
- Accurate and built for use in milling, boring and other machines.
- Indexing, facing and other operations can be done rapidly with extreme precision.
- Worm shafts are hardened and ground.
- Indexing can be done with optional dividing plates.



Specifications

ORDER NO.	TABLE DIAMETER & TABLE HEIGHT			MOUNTING SURFACE		OVER ALL SIZE			T-SLOT WIDTH	CENTER HEIGHT HANDLE	CENTER HOLE	CENTER HEIGHT (Tilted at 90°)	WEIGHT (kgs)	CODE NO.
	D	H	h	A	B	a	b	c	e	H1				
VUT-6	150	115	165	180	268	380	143	125	11	60	MT-2	90	23.5	1001-014
VUT-10	250	155	275	255	397	495	210	187	14	78	MT-3	150	75.5	1001-015
VUT-12	300	178	319	300	447	551	235	212	16	84.5	MT-4	169	108	1001-016

OPTIONAL : Detail see A3



DIVIDING PLATES

ORDER NO.	SUIT FOR MODEL	WEIGHT (kgs)	CODE NO.
DP-1	for VUT-6	1.4	1001-030
DP-3	for VUT-10, VUT-12	4.6	1001-032

MAIN SPECIFICATIONS		VUT-6	VUT-10 VUT-12
TILTING	Degree per one handle rotation	6°	1°
	vernier reading	1'	2'
	Scale of micro collar	5'	1'
TABLE	Degree per one handle rotation	4°	4°
	Scale of micro collar	2'	1'
	vernier reading	20"	10"
	Gear ratio	1:90	1:90

TAILSTOCK



ORDER NO.	Adjustable		SUIT FOR MODEL	G.W. (kgs)	MEAS CFT	CODE NO.
	highest	lowest				
TS-1	108	80	VUT-6	3.9	0.4	1001-022
TS-3	205	130	VUT-10, VUT-12	8.1	0.4	1001-024

Unit:mm

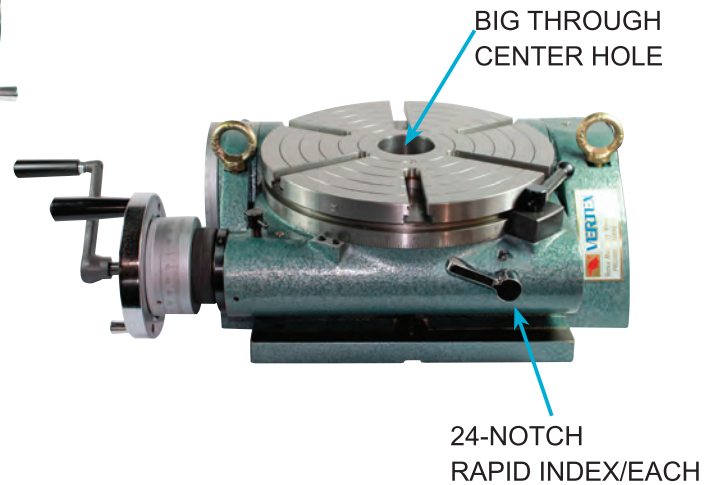


Multiple Tilting Rotary Table



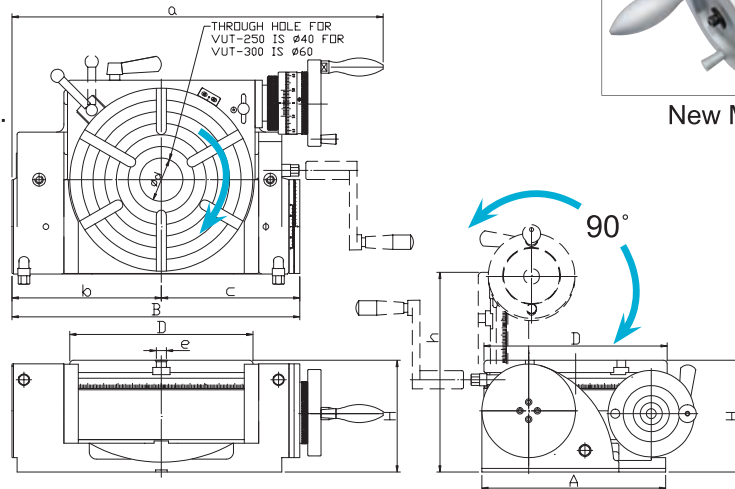
NEW

1. BIG THROUGH HOLE DESIGN TYPE 250 IS Ø45, TYPE 300 IS Ø65
2. WITH 15°, 24 DIVISION DIRECT INDEX.
3. HEAVY DUTY TYPE, RIGID & STRONG DESIGN.



New Model

- The Feature is same as VUT-6, 10, 12 type.
- For the long bar & other work piece need BIGGER BORE size.
- Multiple purpose.
- Fast dividing function : 15° division by handle x 24/360°
- Improve efficiency, save cost.
- Upgrade your millig machine to speed up production.



Specifications

ORDER NO.	TABLE DIAMETER & TABLE HEIGHT			MOUNTING SURFACE		OVER ALL SIZE			T-SLOT WIDTH	CENTER HOLE	CENTER HEIGHT (Tilted at 90°)	WEIGHT (kgs)	CODE NO.
	D	H	h	A	B	a	b	c	e				
VUT-250	250	155	275	255	397	495	210	187	14	Ø45	150	75.5	1001-015A
VUT-300	300	178	319	300	447	551	235	212	16	Ø65	169	108	1001-016A

OPTIONAL : Detail see A3

FLANGE & DP-3



TS-3



DIVIDING PLATES

ORDER NO.	SUIT FOR MODEL	WEIGHT (kgs)	CODE NO.
DP-3	for VUT-250,VUT-300	4.6	1001-032

TAILSTOCK

ORDER NO.	Adjustable		SUIT FOR MODEL	G.W. (kgs)	MEAS CFT	CODE NO.
	highest	lowest				
TS-3	205	130	VUT-250,VUT-300	8.1	0.4	1001-024

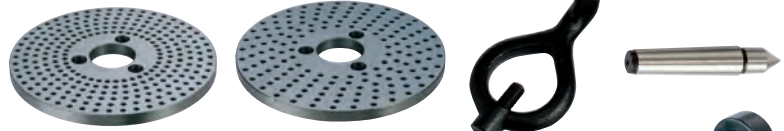
Unit:mm



Semi-Universal Dividing Head

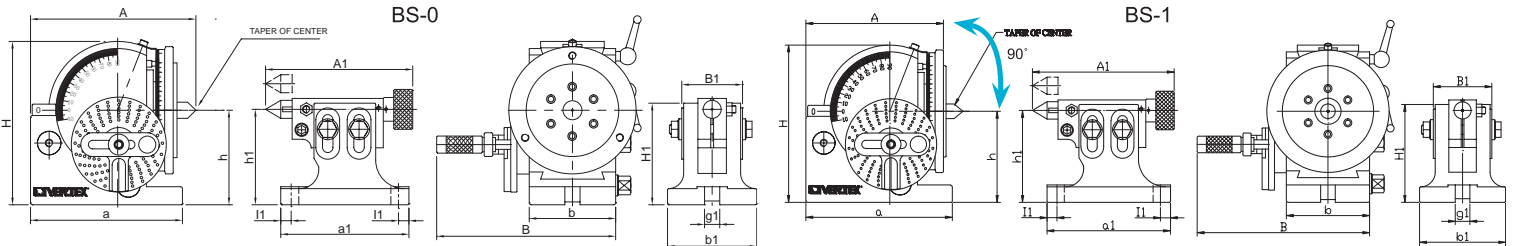


Standard Accessories



Dividing Plate A, B, C

Plate A	15	16	17	18	19	20
Plate B	21	23	27	29	31	33
Plate C	37	39	41	43	47	49



BS-0,1 (Head-stock):

Unit:mm

BS-0,1 (Tail-Stock):

Unit:mm

ORDER NO.	A	B	H	I	a	b	g	h	TAPER OF CENTER	SPINDLE THROUGH HOLE	CODE NO.
BS-0	177	188	173	13	160	91	16	100	MT-2	18	1001-050
BS-1	245	230	220	19	205	114	16	128	MT-3	20	1001-051

ORDER NO.	A1	B1	H1	I1	a1	b1	h1	g1	N.W. (KG)
BS-0	155-180	64	107	11	134	94	80-108	16	4
BS-1	170-195	64	150	11	155	110	115-150	16	5.3

- Dividing Head can divide in any angle by the direct, indirect, or different methods. The ratio between the worm and the worm gear is 40:1. Indirect indexing of all numbers from 2 to 50 and many numbers up to 380 possible
- Hardened and ground spindle is rigidly held in a taper roller bearing. Worm is hardened and ground also.
- The swivel head can be locked of any angle from 10° below horizontal to 90° vertical-precision fitting to base assures smooth rotation.
- All models have threaded spindle nose and 24 hole dividing plate with easy conversion to fast direct indexing on numbers 2, 3, 4, 6, 8, 12, and 24.
- Accurate precision, little backlash, fine appearance and strong structure so can assure smooth rotation.



BS-0-J-5 is BS-0 fitted with 5" 3-Jaw Chuck



BS-2A-J-8 The Chuck Fixing Hole Is From Front.

OPTIONAL

The Chuck Fixing Hole Is From Front.
F. TYPE



BS-0T 1 1/2 - 8TPI TYPE
BS-0T 1 1/8 - 12TPI TYPE
BS-1T 1 1/2 - 8TPI TYPE
Call VERTEX to check old model's stock.

ORDER NO.	N.W. (kgs)	G.W. (kgs)	Meas. CFT	Applicable Chuck	CODE NO.
BS-0	19	(C)20	0.8	5" (Ø130mm)	1001-050
BS-1	32	(C)33	1.3	6" (Ø160mm)	1001-051
BS-0-J-5	24	(C)25	0.8	WITH 5" CHUCK	1001-053
BS-1-J-6	42	(C)45	1.3	WITH 6" CHUCK	1001-054

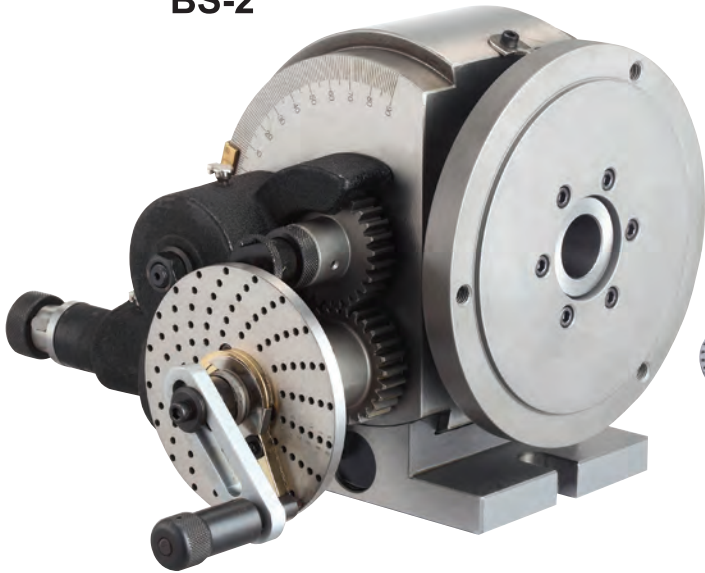


Universal Dividing Head

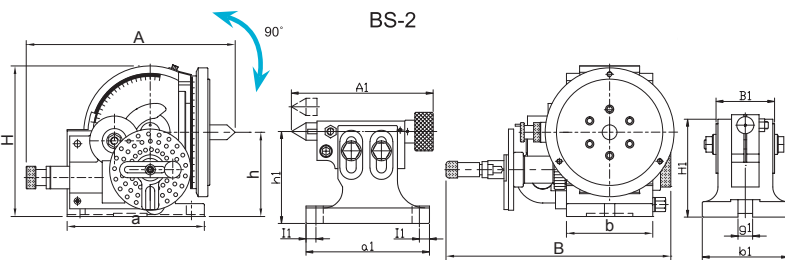


BS-2

Standard Accessories



DIVIDING HEAD



BS-2-J-8 THE CHUCK FIXING HOLE IS FROM FRONT. Thread Spindle: 2 1/4" - 8tpi
 BS-2T TYPE Call To Check Old Model's Stock.

BS-2, 2A (Head-stock)

Unit:mm

ORDER NO.	A	B	H	I	a	b	g	h	Taper of center	SPINDLE THROUGH HOLE	CODE NO.
BS-2	359	340	235	20	212	135	16	134	MT-4	25	1001-052
NEW BS-2A	285	202	237	20	213	134	16	134	MT-4	25	1001-057

ORDER NO.	WITH CHUCK	WEIGHT (kgs)	CODE NO.
BS-2		65	1001-052
BS-2-J-6	6"	78.5	1001-055
BS-2-J-8	8"	80	1001-056
BS-2A		47.5	1001-057
BS-2A-J-6	6"	57	1001-058
BS-2A-J-8	8"	63	1001-059

BS-2, 2A (Tail-stock)

Unit:mm

ORDER NO.	A1	B1	H1	I1	a1	b1	h1	g1	N.W. (KG)
BS-2	170-195	64	150	11	155	110	115-150	16	5.3
BS-2A	170-195	64	150	11	155	110	115-150	16	5.3

ORDER NO.	Gross Weight kg	Meas. CFT	Applicable Chuck
BS-2	(C)65	3.4	6" OR 8" F TYPE
BS-2A	(C)47.5	1.24	6" OR 8" F TYPE



Semi-Universal Dividing Head BS-2A

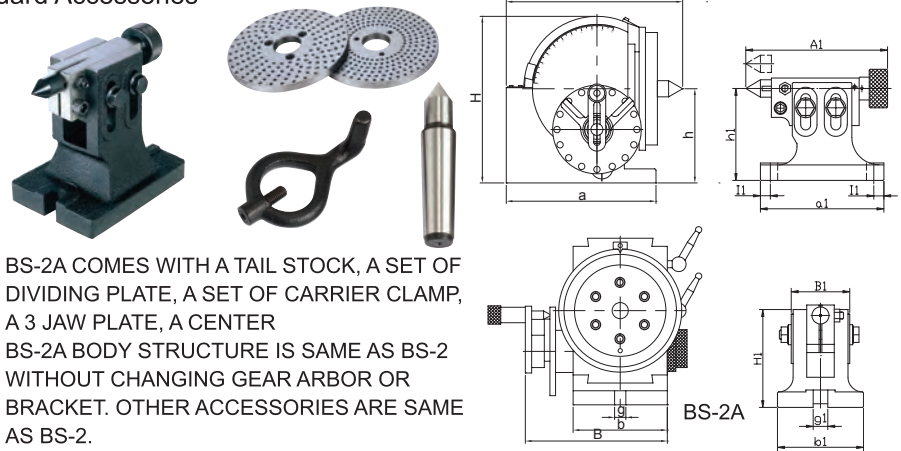
BS-2A Semi-UNIVERSAL DIVIDING HEAD W/O CHANGE GEAR TYPE

NEW



BS-2A

Standard Accessories



BS-2A COMES WITH A TAIL STOCK, A SET OF DIVIDING PLATE, A SET OF CARRIER CLAMP, A 3 JAW PLATE, A CENTER
 BS-2A BODY STRUCTURE IS SAME AS BS-2 WITHOUT CHANGING GEAR ARBOR OR BRACKET. OTHER ACCESSORIES ARE SAME AS BS-2.



Super Indexing Spacer



Standard Accessories



Masking Plate

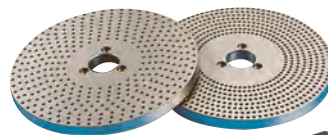


Face Plate

Optional Accessories

The same as Rotary table
Please see page A3

TS-2 for CS-6
TS-3 for CS-8



DP-4



CS-8 with VSK-8A 3-JAW CHUCK MASKING PLATE & FACE PLATE

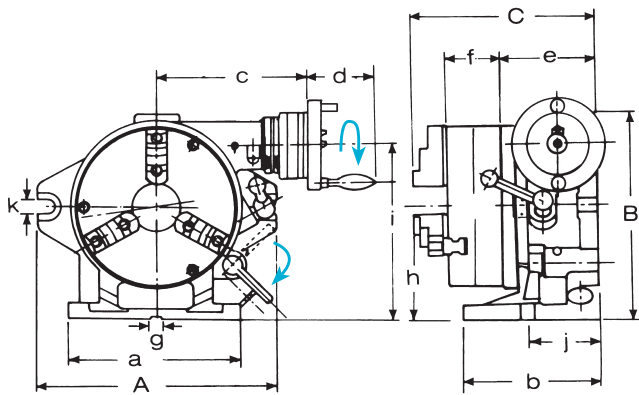
This product combines the advantages of the Super Index with those of a worm-gearred index. When mounted on a milling, boring or other machine tool it can carry out single-purpose indexing and indirect indexing using the worm-drive mechanism. Disengaging the worm drive the 24-notch master plate permits 2, 3, 4, 6, 8, 12 and 24 dividing in the same manner as the Simple Index. When the chuck is removed, the unit can be used as a horizontal and vertical type rotary table. The operating handle to rotary table worm gear reduction ratio is 1:90. The operating handle collar is graduated in one minute, and readings down to ten seconds can be set on the vernier. Super spacer index include 3 jaw chuck, 10"/250mm face plate, masking plates 2, 3, 4, 6, 8, 12.



The state of CS-8 fitted with Face Plate & Dividing Plate



New Model



SPECIFICATIONS	CS-6 CC-6	CS-8 CC-8
Degree per one handle rotation	4°	4°
Scale of micro collar	2'	1'
vernier reading	20"	10"
Gear ratio	1:90	1:90

Specifications

Unit:mm

ORDER NO.	Numbers of dividing	Chuck Through Hole				Diameter of hole (turret)	Face plate		A	B	C	a
		Outer diameter	Inner jaw	Outer jaw	Inner dia		Outer dia	Thickness				
CS-6	2, 3, 4, 6 8, 12, 24	160 VSK-6A	4~42	10~156	44	44	203	50	250	235	221	220
CS-8		210 VSK-8A	4~62	10~180	58	63	254	58	310	285	243	225

Unit:mm

ORDER NO.	b	c	d	e	f	g	h	i	j	k	Gross Weight kgs	Meas. CFT	CODE NO.
CS-6	150	184	82	112	66	16	123	186	80	18	(C)43.6	1.2	1001-060
CS-8	160	201	82	125	75	16	155	232	96	18	(W)78.3	3.1	1001-061

(W)Wooden Case (C)Carton Case



Simple Indexing Spacer



INDEXING SPACER



CC-12, Ø105
BIG THROUGH HOLE DESIGN



CC-8



Masking Plate

※ When order optional higher accuracy chuck , price will be higher. Example with VSK-6, 8, 12

- The center through hole is big to be suitable for the large and long workpiece.
- Hardened and ground 24 position master plate, can index the special angle of 15 with excellent accuracy.
- CS-Type can be used with 2 pcs type 3-Jaw Chuck. Especially, it does similar work. as rotary table when it match with face plate.
- Rapid indexing and easy operation. It's a sharp equipment for mass-production.
- Simple index include 3-jaw chuck, Masking Plates 2, 3, 4, 6, 8, 12
- CC-6 with VSK-6A chuck front fixing hole type.
- CC-8 with VSK-8A chuck front fixing hole type.
- CC-12 with VSK-12 chuck front fixing hole type.
- CC-12A with VSK-12A chuck economical chuck.

CS-6 with VSK-6A chuck front fixing hole type.
CS-8 with VSK-8A chuck front fixing hole type.

FIG. (I) CC-6, 8

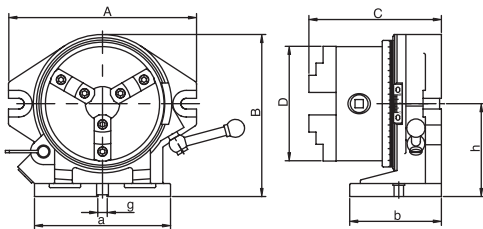
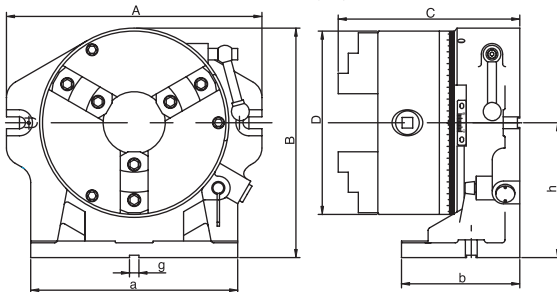


FIG. (II) CC-12



STANDARDS OF ACCURACY for Simple Index for Super-Dex.		
NO.	Testing Objective	Tolerances Per 100mm Permitted Max.
1	Parallelism of table surface to base	0.02
2	True running of axial movement of table surface	0.03
3	True running of center boss	0.02
4	Squareness of base to angle face	0.02

Optional Accessories

Tailstock

TS-2 FOR CC-6
TS-3 FOR CC-8
TS-4 FOR CC-12
please see page A3



Specifications

Unit:mm

ORDER NO.	Fig.	Dividual number	A	B	C	D	a	b	h	Inner jaw	g	Outer jaw	Diameter of hole (turret)	Diameter of hole (chuck)	Gross weight kgs	Meas. CFT	CODE NO.
CC-6	I	2, 3, 4, 6	253	225	179	160	187	115	130	Ø55~Ø145	16	Ø3~Ø160	44	44	(C)29.5	0.9	1001-062
CC-8	II	8, 12, 24	318	274	209	200	230	155	157	Ø65~Ø200	16	Ø4~Ø200	63	58	(C)51.5	1.3	1001-063
CC-12	II	2, 3, 4, 6	432	388	293	315	350	200	228	Ø100~Ø315	16	Ø10~Ø315	106	105	(W)163	3.6	1001-066
NEW CC-12A		8, 12, 16, 24, 48															1001-066A