

Features:

- It is the special Grinder for de-burr, polish and clean light and precision spare parts of watch, computer, electron, machinery...etc, such as material of steel, stainless steel, brass, copper, aluminum, hard-plastic., and jewelry of gold, k-gold, platinum, silver...etc.
- Fine finish for delicate articles and perfect result. Never hurt the face, change the form, change the accuracy or loss the weight of articles after ground.
- Can be de-burr the hole, crevice of articles. Resolved the problems as you met before.



Applications:

- Designed for medium quantity of parts.
- Fully automatic. One person can run multiple machines.
- Suitable for non-magnetic metal parts.

Operation Plate:

- Power
- Start
- Stop
- Counterclockwise timer
- Clockwise timer
- Monitor of finished cycle and error direction
- Speed adjustment

ORDER NO.	DIMENSION	TANK SIZE	POWER	STANDARD ACCESSORIES	N.W.	CODE NO.
VDB-728	L x W x H 400x490x900 (mm)	L x W 280x280 (mm)	220 VAC (50Hz/60Hz) 5A single phase	1. Rotarier. 2. Containers. 3. Separating container. 4. Magnetic sleeve. 5. Stainless pins/2kg 6. Grinding liquid/2 Liter 7. Operation manual.	65kgs	8001-202



Applications:

- Designed for large quantity of parts.
- Fully automatic. One person can run multiple machines.
- Suitable for all types of metal parts.

Operation Plate:

- Power
- Start
- Stop
- Counterclockwise timer
- Clockwise timer
- Monitor of finished cycle and error direction
- Speed adjustment
- Finished cycle alarm
- Finished cycle light

ORDER NO.	DIMENSION	TANK SIZE	GRIND ABILITY	POWER	STANDARD ACCESSORIES	N.W.	CODE NO.
VDB-735	L x W x H 640x625x865 (mm)	L x W 420x380 (mm)	65 CM	220 VAC (50Hz/60Hz) 10A single phase	1. Rotarier. 2. Containers. 3. Separating container. 4. Magnetic sleeve. 5. Stainless pins/4kg 6. Grinding liquid/4 Liter 7. Operation manual.	100kgs	8001-203



Magnetic De-Burring & Polishing Machine

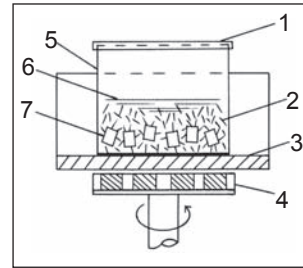


ORDER NO.VDB-233A CODE NO.8001-300

Diagram of principle for Magnetic De-burring & Polishing Machine

- Lid
- Magnetic media (stainless pin)
- Top plate
- Magnetic disc
- Container
- liquid and water level (1/ 100)
- Work-piece

work-piece are tumbled together with the magnetic media through the rotation of the magnets below the non-magnetic top plate, which causes violent agitation of the magnetic field.



Function of liquid:

For avert rustiness, cool and clean.

Rate of liquid/water: 1/100

GRINDING LIQUID	
Material	Stainless, steel Brass, copper Gold, silver platinum



Magnetic media / Grinding liquid (Stainless pin)



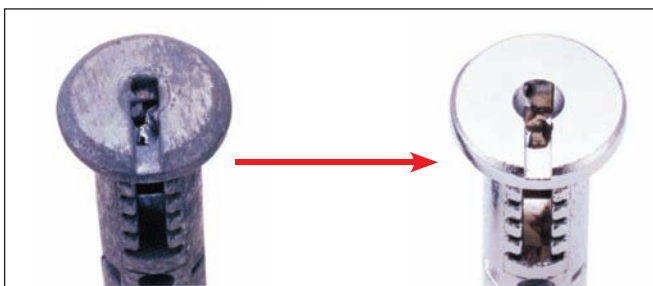
SS304 STAINLESS PIN

SPECIFICATION OF MAGNETIC MEDIA (STAINLESS PIN)						
Dmm x Lmm	0.2x5	0.3x5	0.5x5	0.7x5	1.0x5	1.2x5

OPERATIONS

- Put the magnetic media (stainless steel pins) in the container, the quantity of magnetic media is around 0.5cm to 1cm from the bottom of the container.
- Put work-Piece in the container, the principle of quantity as does not put the work-piece overlap.
- Put the liquid with 100 times of water in the container. The liquid with water should be cover the workpiece and over 2--3cm.
- Placed the lid of container and put the container on the top plate of the grinder for begin to grind.
- The grinding time and the quantity of work-piece should be depend on the result which you need after test several times. Please make note for next time when you want to grind same work-piece.
- There are two size of container, so if you want to grind the work-piece just few quantity, the small one will be much better.

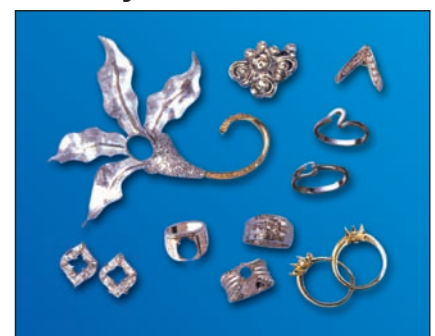
EXAMPLE



parts



Jewelry



SPECIAL USAGE MACHINE