

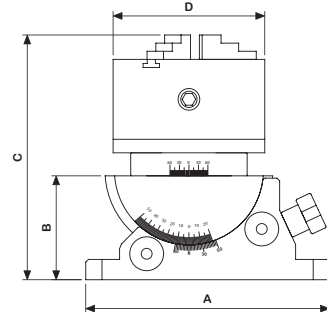
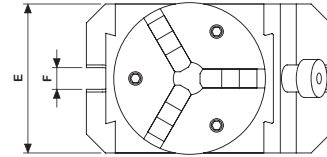
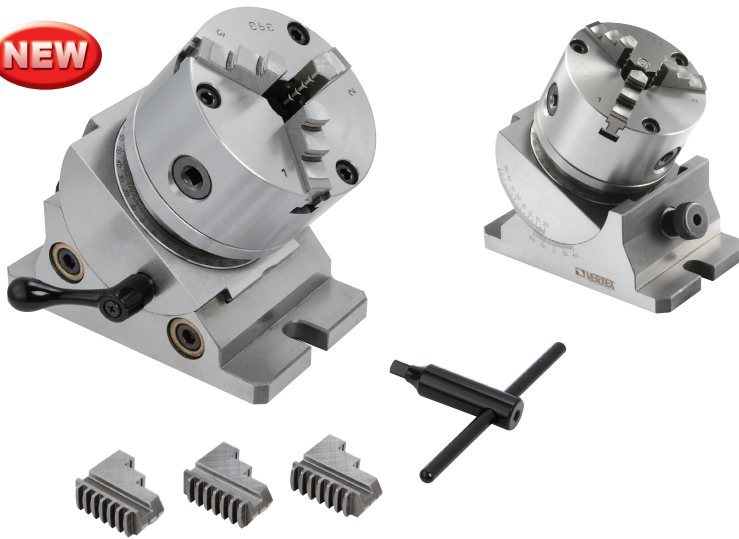


Precision Universal Angle Chuck

**VERTEX®**

PAT.

With VSC-4 Chuck

NEW

- Precision graduation for accurate reading.
- Its swivelling and tilting features with clamping make this unit well suited for straight or inclined surface, angular drilling machining on various machine tools.
- With VSC-4 3-Jaw chuck.
- O.D. clamping $\varnothing 3-90$ mm,

- I.D. clamping $\varnothing 32-84$ mm.
- Tolerance $\pm 0.01\text{mm}/100\text{mm}$.
- 2 axis with angle scale
- For angle setting
- Chuck indexing / Rotating setting
- Tilting Features same as VUA series, Page B13.

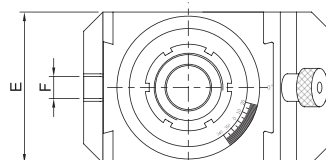
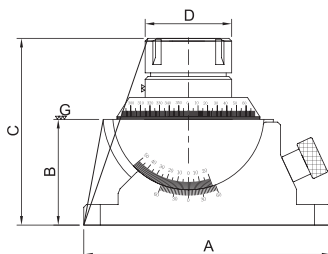
ORDER NO.	A	B	C	D	E	F	G.W (kgs)	CODE NO.
VUA-100J	180	77	181	112	110	16	14	2003-060



Precision Universal Angle Collet Chuck

Capacity $\varnothing 3-\varnothing 30$ **NEW**

- Precision graduation for accurate reading.
 - Its swivelling and tilting features with clamping make this unit for straight or inclined surface, angular drilling machining on various machine tools.
 - Tolerance ± 0.01 mm / 100 mm.
 - 360° horizontal swivel, 45° vertical tilting.
 - Suit for multi - angle cutting.
 - Simple way for mass production.
- Hardness : HRC 52° $\pm 2^\circ$

**Standard Accessories:** With 15pcs ER-40 Collet (4, 5, 6, 8, 10, 12, 13, 15, 16, 18, 20, 21, 22, 25, 26)

ORDER NO.	A	B	C	D	E	F	G.W (kgs)	CODE NO.
VUA-ER40	180	77	136	63	110	16	17.48	2003-065

Optional collet ER-40- $\varnothing 27, 28, 29, 30$ mm

UNIVERSAL ANGLE CHUCK