

Optional For Rotary Table



A. DIVIDING PLATES

DP-2, 3, 4, 5



*DP set include index plate. crank handle, 3 pcs screw, sector, & U Washer.

1 carton with 1 set. Gross weight: 3.5kgs.

Meas.: 0.13 CFT.

Number of the holes of Dividing Plates

ORDER NO.	SUIT FOR MODEL	WEIGHT kgs	CODE NO.
* DP-2	for HV-8, VU-200	4.5	1001-031
DP-3	for HV-10, 12, 14, 16, VUT-10, VUT-12	4.6	1001-032
DP-4	for CS-6, 8	4.6	1001-033
DP-5	for VU-300	4.6	1001-034

Holes Number

A-Plate	26, 30, 34, 38, 41, 44, 47, 51, 57, 28, 32, 37, 39, 43, 46, 49, 53, 59
B-Plate	61, 67, 71, 77, 81, 87, 91, 97, 63, 69, 73, 79, 83, 89, 93, 99

DP-1



ORDER NO.	SUIT FOR MODEL	WEIGHT kgs	CODE NO.
*DP-1	for HV-4, HV-6, VUT-6, VU-100, 150	1.4	1001-030

Holes Number

A-Plate	15, 16, 17, 18, 19, 20
B-Plate	21, 23, 27, 29, 31, 33
C-Plate	37, 39, 41, 43, 47, 49

B. TAILSTOCK



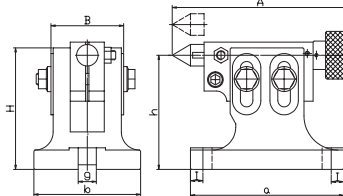
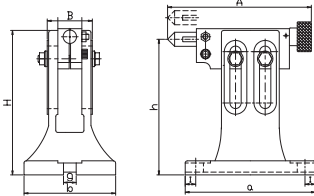
TS-3



TS-1

TS-2~TS-4

TS-1

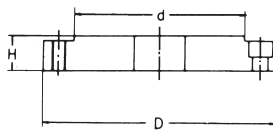


Tailstock

Unit:mm

ORDER NO.	adjustable		SUIT FOR MODEL	G.W. kgs	Meas. CFT	CODE NO.
	highest	lowest				
TS-1	108	80	HV-4, HV-6, VSI-4, VSI-5, BS-0, VUT-6, VU-100, VU-150	3.9	0.4	1001-022
TS-2	145	115	BS-1, CC-6, CS-6, HV-8	5.5	0.4	1001-023
TS-3	205	130	CS-8, HV-10, HV-12, CC-8, VUT-10, VUT-12, VU-200	8.1	0.4	1001-024
TS-4	260	182	HV-14, CC-12, HV-16	11.9	0.7	1001-025

C. FLANGE



- FLT-103 For VSC-3F
- FLT-104 For VSC-4F
- FLT-0 For VSC-5F
- FLT-1 For VSC-6F
- FLT-2 For VSC-7F
- FLT-3 For VSC-8F
- Flange for VSC-A TYPE
- FLT-103A For VSC-3A
- FLT-104A For VSC-4A
- FLT-0A For VSC-5A
- FLT-1A For VSC-6A
- FLT-2A For VSC-7A
- FLT-3A For VSC-8A

Flange

Unit:mm

ORDER NO.	D	d	H	SUIT FOR MODEL	WEIGHT kgs	CODE NO.
FLT-103	90	60	20	HV-4, VU-100	0.71	1001-036
FLT-104	113	80	20	HV-4, 6, VU-100, 150, VUT-6	1.0	1001-037
FLT-0	138	100	20	HV-6, 8, VU-150, 200, VUT-6	1.9	1001-040
FLT-1	170	130	21	HV-8, 10, VU-200, VUT-10	3.3	1001-041
FLT-2	195	155	24	HV-10, 12, 14, VUT-10, 12	5.2	1001-042
FLT-3	210	160	24	HV-10, 12, 14, 16, VUT-12	4.9	1001-043

Unit:mm

ORDER NO.	D	d	H	SUIT FOR MODEL	T-NUT SIZE	BOLT	WEIGHT kgs	CODE NO.
FLT-103A	90	55	20	HV-4, VU-100	M8x10, 3412M	M8x20L	0.71	1001-044
FLT-104A	113	72	20	HV-4, 6, VU-100, 150, VUT-6	M8x10, 3412M	M8x20L	1.0	1001-045
FLT-0A	138	100	20	HV-6, 8, VU-150, 200, VUT-6	M8x10, 3412M	M8x20L	1.9	1001-046
FLT-1A	170	130	21	HV-8, 10, VU-200, VUT-10	M10x14, SPECIAL SIZE	M10x25L	3.3	1001-047
FLT-2A	195	155	24	HV-10, 12, 14, VUT-10, 12	M10x14, SPECIAL SIZE	M10x25L	5.2	1001-048
FLT-3A	210	165	24	HV-12, 14, 16, VUT-12	M10x16, SPECIAL SIZE	M10x30L	4.9	1001-049