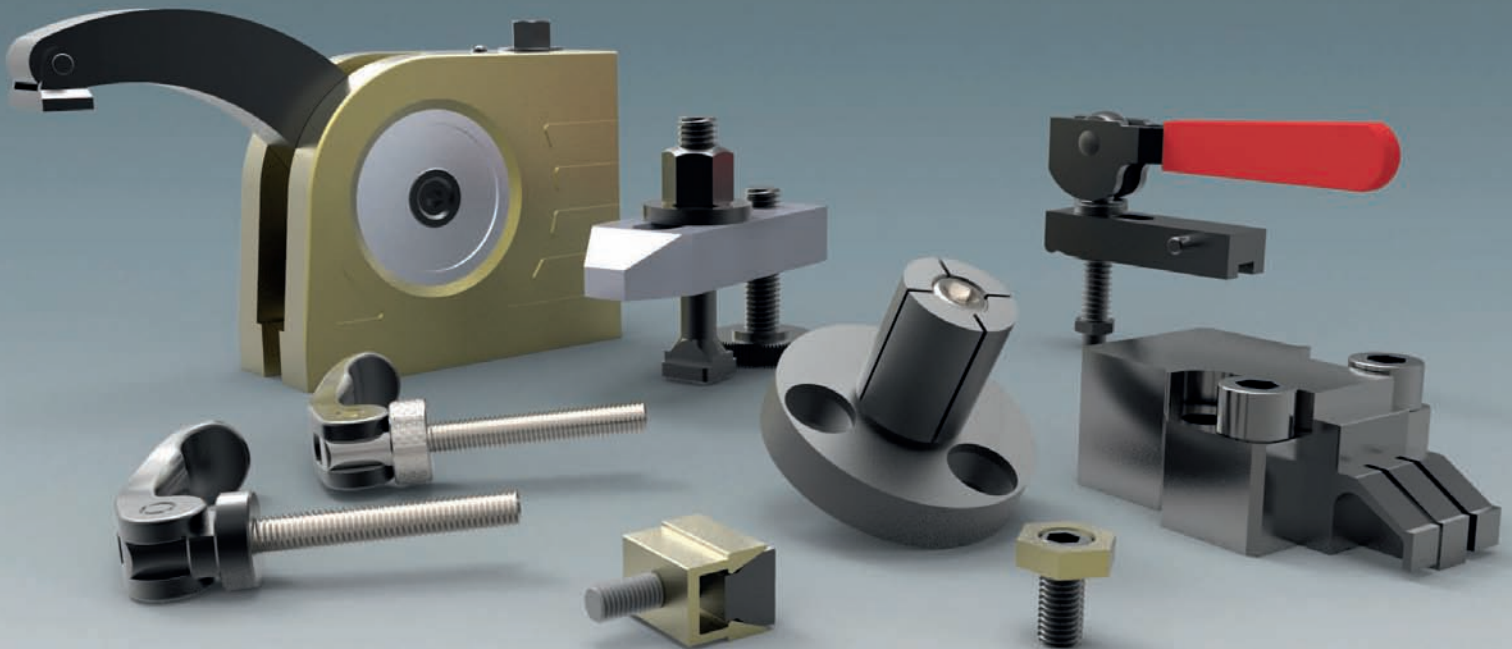


CLAMPS

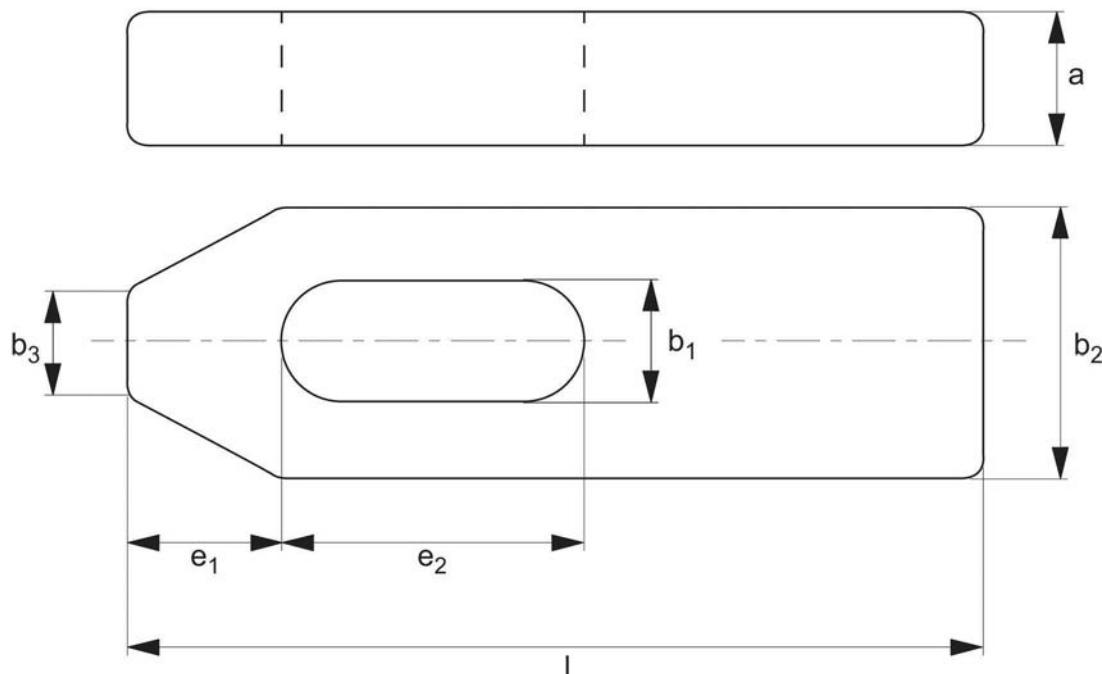


Plain Clamps

DIN 6314



10000



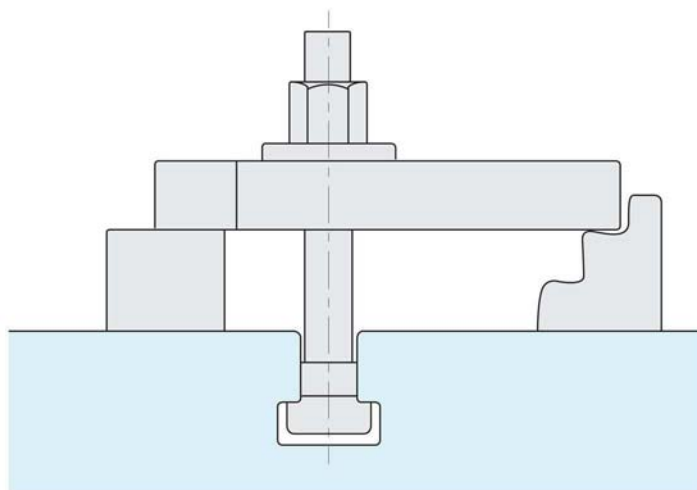
Material

Heat-treated steel, enamelled.

Technical Notes

() = Not to DIN standard.
For T-bolts, washers and nuts see part 21000 to 24300.

Order No.	b ₁	l	For metric thread	For imperial thread	a	b ₂	b ₃	e ₁	e ₂	$\frac{\Delta}{g}$
10000.W0007	6,6	50	M 6	1/4	10	20	8	10	20	63
10000.W0009	9,0	60	M 8	5/16	12	25	10	13	22	113
10000.W0011	11,0	80	M10	3/8	15	30	12	15	30	226
10000.W0014	14,0	100	M12, M14	1/2	20	40	14	21	40	490
10000.W0015	14,0	125	M12, M14	1/2	20	40	14	21	50	621
10000.W0018	18,0	125	M16, M18	5/8	25	50	18	26	45	960
10000.W0019	18,0	160	M16, M18	5/8	25	50	18	26	65	1240
10000.W0022	22,0	160	M20, M22	3/4	30	60	22	30	60	1787
10000.W0023	22,0	200	M20, M22	3/4	30	60	22	30	80	2237
10000.W0026	26,0	200	M24	1	30	70	26	35	80	2580
10000.W0027	26,0	250	M24	1	(35)	70	26	35	105	3800
10000.W0034	33,0	250	M30	1-1/4	40	80	34	45	100	4934
10000.W0035	33,0	315	M30	1-1/4	50	80	34	45	130	7880
10000.W0043	(43,0)	400	M36, M42	1-1/2	60	100	43	100	150	15000



Plain Clamps

DIN 6314



10000



Material

Heat-treated steel, enamelled.

Technical Notes

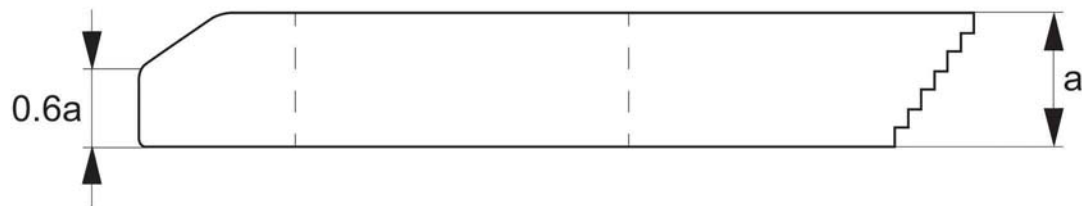
() = Not to DIN standard.

For T-bolts, washers and nuts see part 21000 to 24300.

Step Clamps



10020

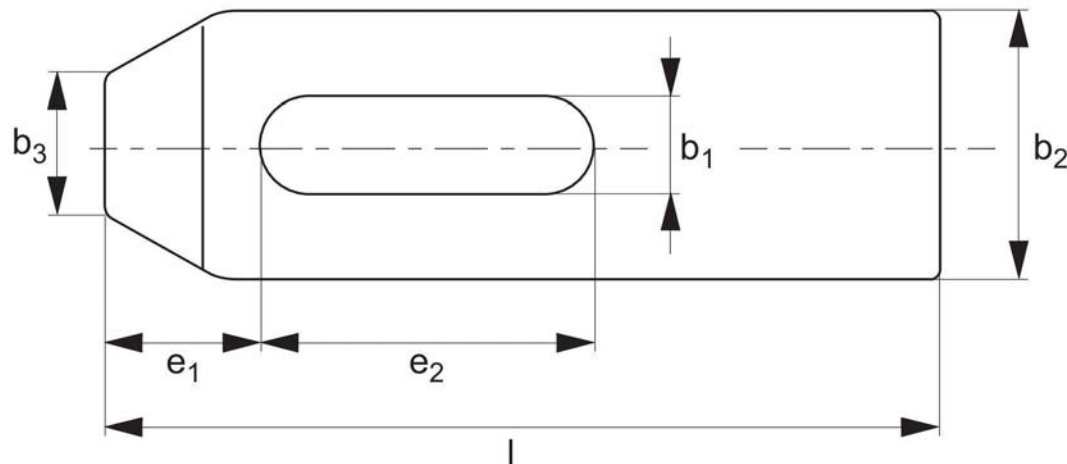





Material

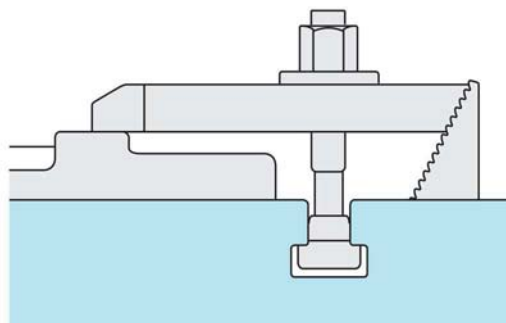
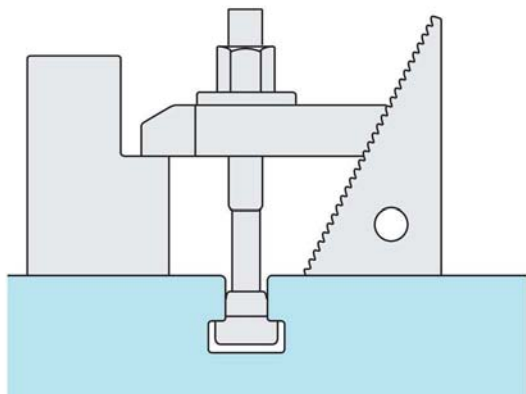
Heat-treated steel, enamelled.

Technical Notes

Only to be used with step blocks no. 14000.



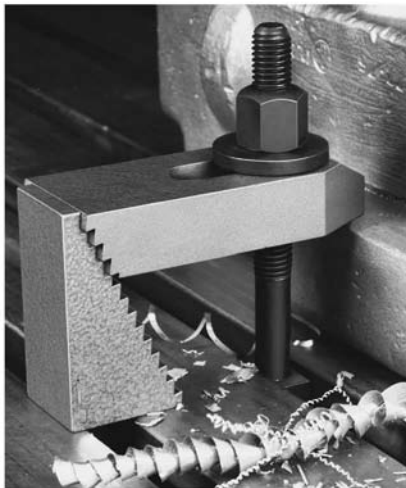
Order No.	b_1	l	 metric	 inch	a	b_2	b_3	e_1	e_2	 g
10020.W0007	6,6	50	M 6	1/4	10	20	8	10	20	55
10020.W0008	6,6	80	M 6	1/4	10	20	8	10	45	90
10020.W0009	9,0	60	M 8	5/16	12	25	10	13	22	100
10020.W0010	9,0	100	M 8	5/16	12	25	10	13	60	180
10020.W0011	11,0	80	M10	3/8	15	30	12	15	30	200
10020.W0012	11,0	125	M10	3/8	15	30	12	15	70	350
10020.W0014	14,0	100	M12, M14	1/2	20	40	14	21	40	450
10020.W0015	14,0	160	M12, M14	1/2	20	40	14	21	90	770
10020.W0018	18,0	125	M16, M18	5/8	25	50	18	26	45	900
10020.W0019	18,0	200	M16, M18	5/8	25	50	18	26	110	1500
10020.W0022	22,0	160	M20, M22	3/4	30	60	22	30	60	1700
10020.W0026	26,0	200	M24	1	30	70	26	35	80	2500



Step Clamps



10020



Material

Heat-treated steel, enamelled.

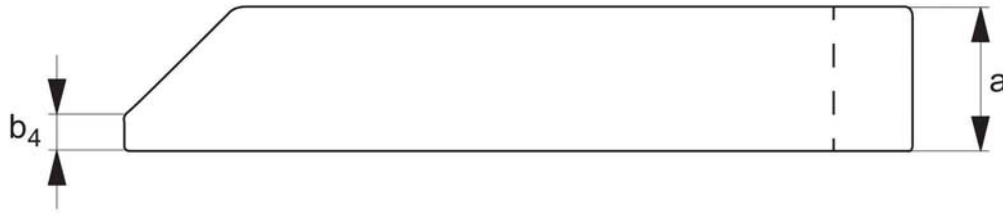
Technical Notes

Only to be used with step blocks no. 14000.

Forked Clamps



10100



Material

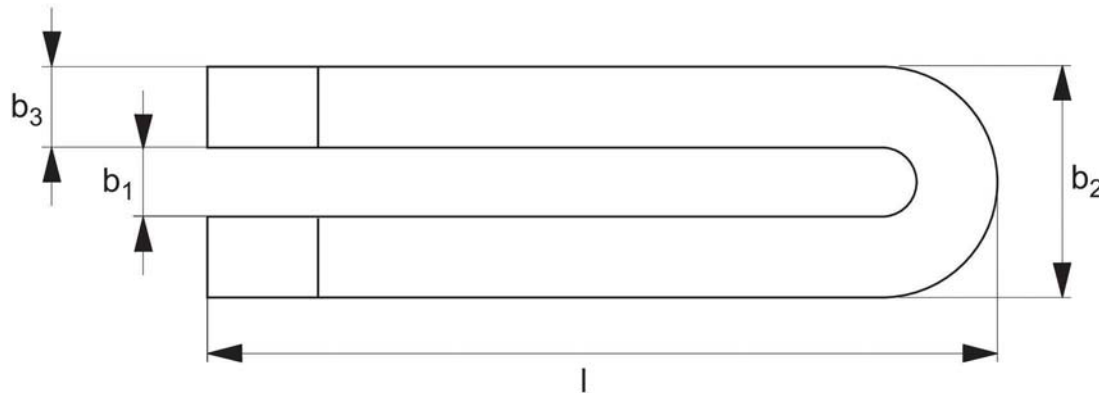
Heat-treated steel, enamelled.


Technical Notes

() = Not to DIN standard.

Tips

Clamp support no. 26000 is often used with this clamp see.



Order No.	b ₁	l	For metric thread	For imperial thread	a	b ₂	b ₃	b ₄	 g
10100.W0007	6,6	60	M 6	1/4	12	19	6	3	60
10100.W0009	9,0	80	M 8	5/16	15	25	8	4	140
10100.W0011	11,0	100	M10	3/8	20	31	10	5	300
10100.W0014	14,0	125	M12, M14	1/2	25	38	12	6	570
10100.W0015	14,0	160	M12, M14	1/2	25	38	12	6	730
10100.W0016	14,0	200	M12, M14	1/2	25	38	12	6	910
10100.W0018	18,0	160	M16, M18	5/8	30	48	15	8	1080
10100.W0019	18,0	200	M16, M18	5/8	30	48	15	8	1360
10100.W0020	18,0	250	M16, M18	5/8	40	48	15	10	2250
10100.W0022	22,0	200	M20, M22	3/4	40	52	15	10	1800
10100.W0023	22,0	250	M20, M22	3/4	40	62	20	10	3000
10100.W0024	22,0	315	M20, M22	3/4	40	62	20	10	3850
10100.W0025	22,0	500	M20, M22	3/4	50	62	20	10	7600
10100.W0026	26,0	200	M24	1	40	66	20	10	2400
10100.W0027	26,0	250	M24	1	40	66	20	10	3000
10100.W0028	26,0	315	M24	1	40	66	20	10	3850
10100.W0029	26,0	400	M24	1	50	66	20	10	5962
10100.W0030	26,0	500	M24	1	50	66	20	10	7600
10100.W0031	26,0	600	M24	1	50	66	20	10	9042
10100.W0032	26,0	800	M24	1	50	66	20	10	12122
10100.W0034	33,0	250	M30	1-1/4	50	74	20	12	3700
10100.W0035	33,0	315	M30	1-1/4	50	74	20	12	4750
10100.W0036	33,0	400	M30	1-1/4	50	74	20	12	6100
10100.W0037	33,0	600	M30	1-1/4	50	74	20	12	9200
10100.W0038	33,0	1000	M30	1-1/4	60	94	30	12	28000
10100.W0040	40,0	400	M36	1-1/2	60	100	30	12	11000
10100.W0041	40,0	600	M36	1-1/2	60	100	30	12	16500
10100.W0042	(43,0)	600	M36, M42	1-1/2	80	123	40	12	29600

Forked Clamps



10100



Material

Heat-treated steel, enamelled.

Technical Notes

() = Not to DIN standard.

Tips

Clamp support no. 26000 is often used with this clamp see.

Forked Clamps

with pin end - DIN 6315C



10120

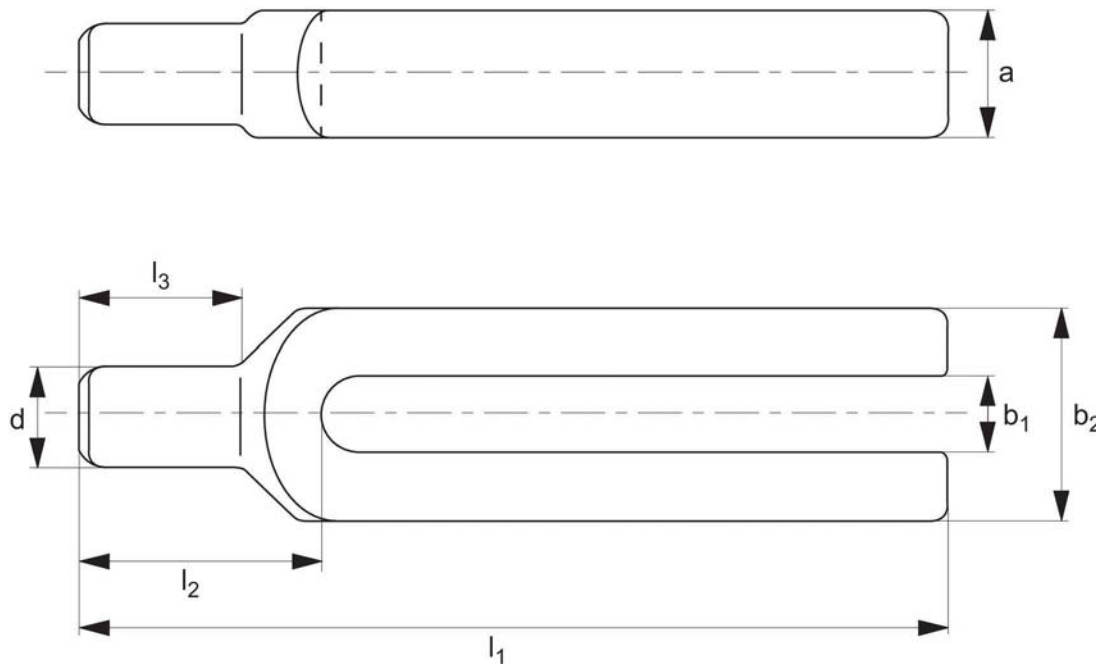


Material

Tempered steel, varnished

Technical Notes

For T-bolts, washers and nuts see part 21000 to 24300.



Order No.	b_1	l_1	For metric thread	For imperial thread	a	b_2	d	l_2	l_3	$\frac{\Delta}{g}$
10120.W0009	9	100	M 8	5/16	15	30	12	30	18	220
10120.W0011	11	125	M10	3/8	20	30	16	36	24	350
10120.W0014	14	160	M12, M14	1/2	25	40	20	45	30	750
10120.W0015	14	200	M12, M14	1/2	25	40	20	45	30	950
10120.W0018	18	200	M16, M18	5/8	30	50	24	55	36	1400
10120.W0019	18	250	M16, M18	5/8	30	50	24	55	36	1750
10120.W0022	22	250	M20, M22	3/4	40	60	30	65	45	2700
10120.W0023	22	315	M20, M22	3/4	40	60	30	65	45	3400
10120.W0026	26	250	M24	1	40	70	38	80	56	3200
10120.W0027	26	315	M24	1	40	70	38	80	56	4100
10120.W0034	33	315	M30	1-1/4	50	80	45	85	56	5700
10120.W0035	33	400	M30	1-1/4	50	80	45	85	56	7000

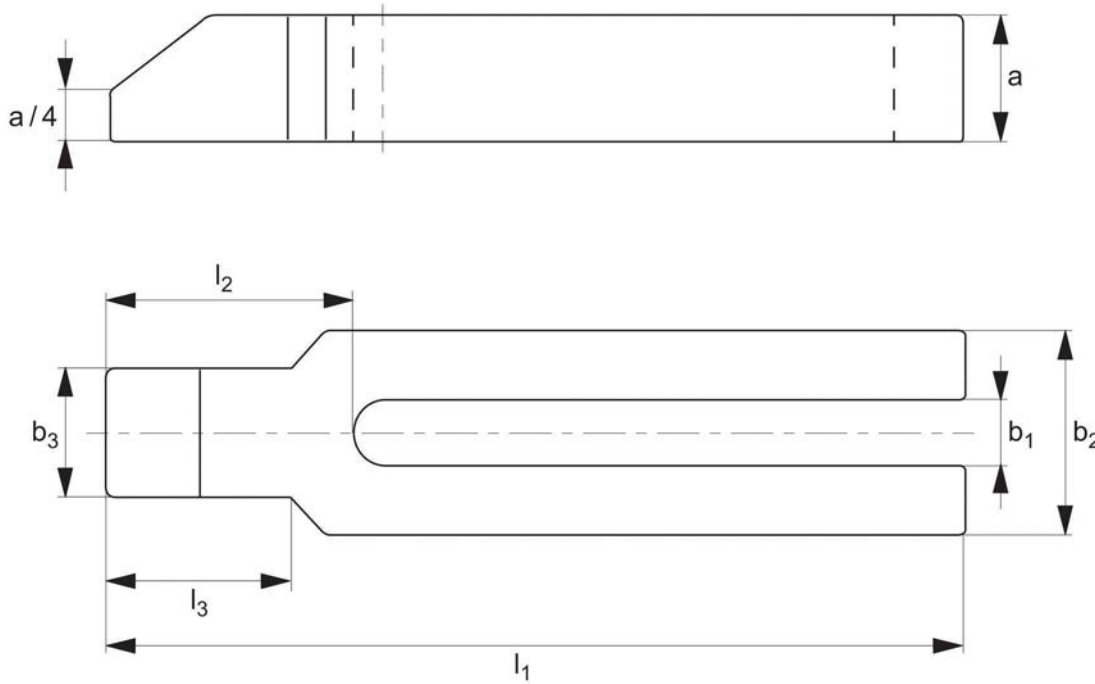


Forked Clamps

with shoe



10140




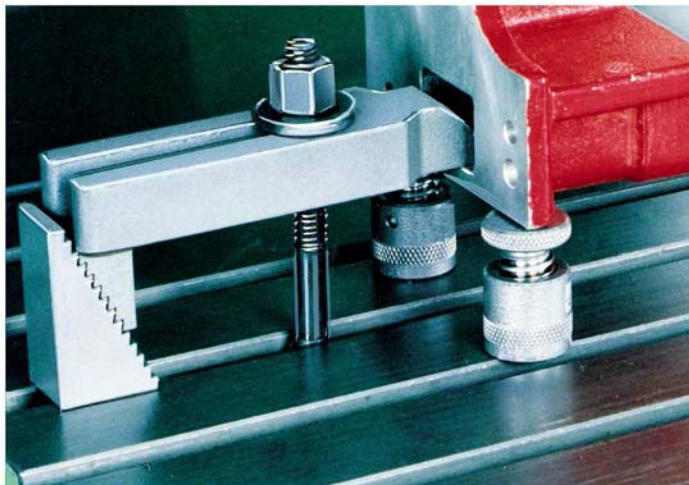
Material

Tempered steel, varnished.

Technical Notes

For T-bolts, washers and nuts see part 21000 to 24300.

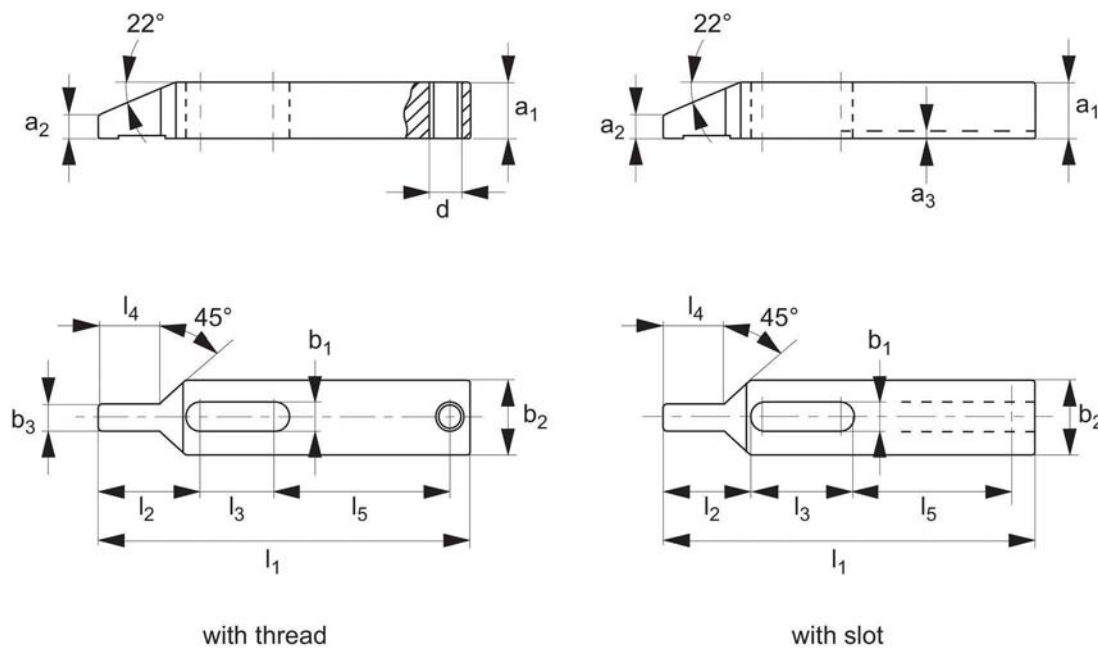
Order No.	b ₁	l ₁	For metric thread	For imperial thread	a	b ₂	b ₃	l ₂	l ₃	 g
10140.W0009	9	100	M 8	5/16	15	30	16	32	18	240
10140.W0011	11	125	M10	3/8	20	30	20	38	24	380
10140.W0014	14	160	M12, M14	1/2	25	40	24	47	30	800
10140.W0015	14	200	M12, M14	1/2	25	40	24	47	30	950
10140.W0018	18	200	M16, M18	5/8	30	50	28	57	36	1500
10140.W0019	18	250	M16, M18	5/8	30	50	28	57	36	1850
10140.W0022	22	250	M20, M22	3/4	40	60	35	68	45	2900
10140.W0023	22	315	M20, M22	3/4	40	60	35	68	45	3600
10140.W0026	26	250	M24	1	40	70	43	83	56	3400
10140.W0027	26	315	M24	1	40	70	43	83	56	4300
10140.W0034	33	315	M30	1-1/4	50	80	50	88	56	6000
10140.W0035	33	400	M30	1-1/4	50	80	50	88	56	7300



Narrow Nose Clamps



10160



Material

Heat-treated steel, blackened.

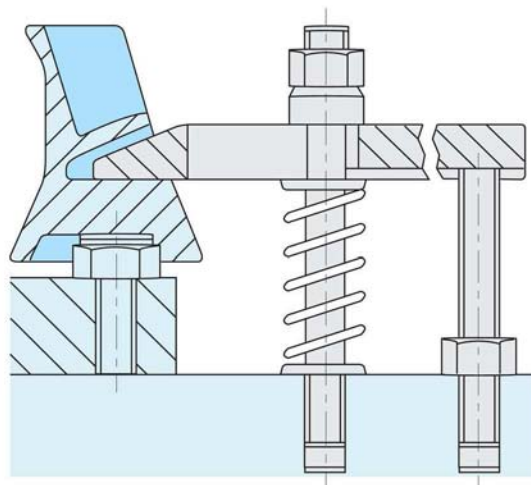
Technical Notes

The small nose permits clamping even on difficult to reach areas.

Tips

Choose 'With Thread' for vertical adjustment, and 'With Slot' for horizontal adjustment.

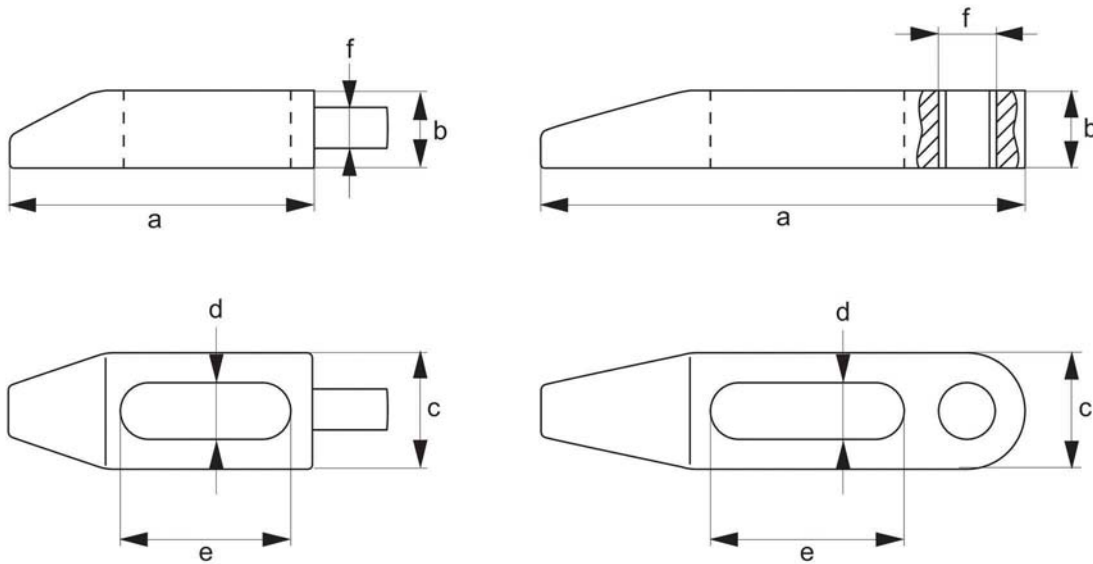
Order No.	Type	b ₁	l ₁	a ₁	a ₂	a ₃	b ₂	b ₃	d	l ₂	l ₃	l ₄	l ₅	Max. starting torque Nm.	g
10160.W0107	With Thread	6,6	80	8	2,5	-	15	7,5	M 6	17	23	13	34	5	54
10160.W0109	With Thread	9,0	100	12	4,0	-	20	9,5	M 8	22	29	17	42	12	133
10160.W0111	With Thread	11,0	125	15	5,0	-	25	11,5	M10	28	36	21	52	30	261
10160.W0113	With Thread	13,0	150	20	7,0	-	30	13,5	M12	34	43	25	63	55	504
10160.W0117	With Thread	17,0	175	25	9,0	-	35	15,5	M16	40	52	29	70	80	828
10160.W0207	With Slot	6,6	80	8	2,5	2,5	15	7,5	-	17	23	13	34	5	50
10160.W0209	With Slot	9,0	100	12	4,0	3,0	20	9,5	-	22	29	17	42	12	127
10160.W0211	With Slot	11,0	125	15	5,0	3,5	25	11,5	-	28	36	21	52	30	251
10160.W0213	With Slot	13,0	150	20	7,0	4,0	30	13,5	-	34	43	25	63	55	488
10160.W0217	With Slot	17,0	175	25	9,0	4,5	35	15,5	-	40	52	29	70	80	800
10160.W0222	With Slot	22,0	225	35	15,5	5,5	50	19,5	-	52	62	33	-	-	2200
10160.W0226	With Slot	26,0	250	40	17,5	5,5	60	21,5	-	60	71	36	-	-	3340



Finger Clamps



10164



type one

type two



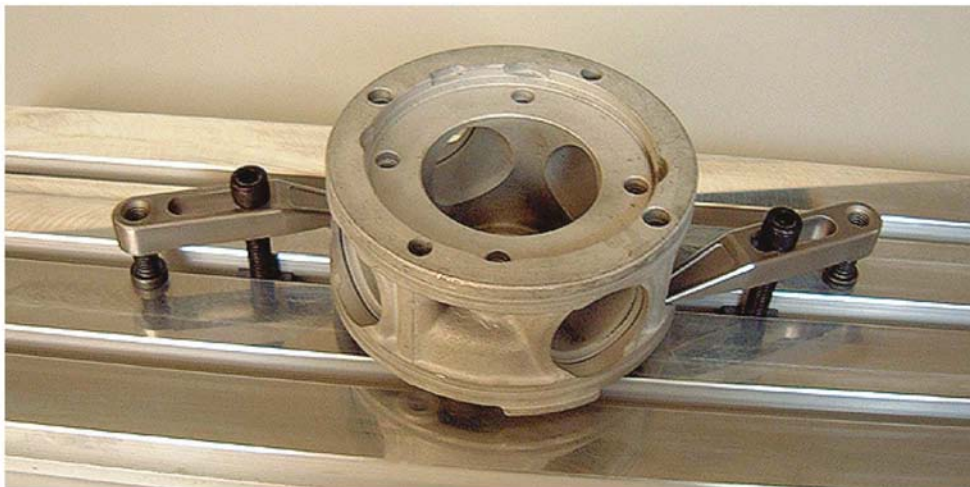
Material

Stainless steel (17-4 PH).

Technical Notes

This is a low profile slotted clamp.

Order No.	Type	a	b	c	d	e	f	Holding force kN.
10164.W0092	One	92	11	22,6	10,4	22,0	9,5 Pin	14,2
10164.W0127	Two	127	19	25,4	13,4	34,5	M12	26,7
10164.W0152	Two	152	22	30,5	16,5	38,1	M16	38,2
10164.W0178	Two	178	27	35,6	19,8	38,1	M20	69,8

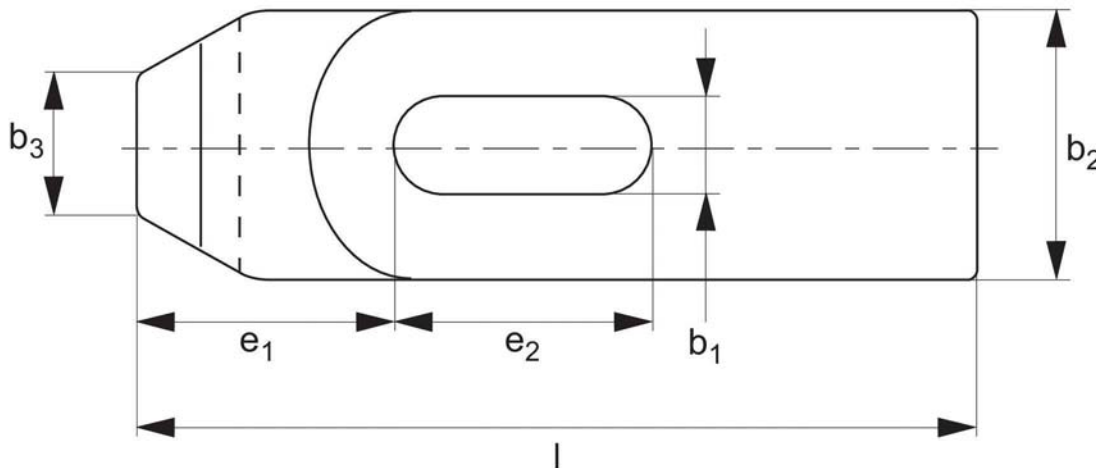
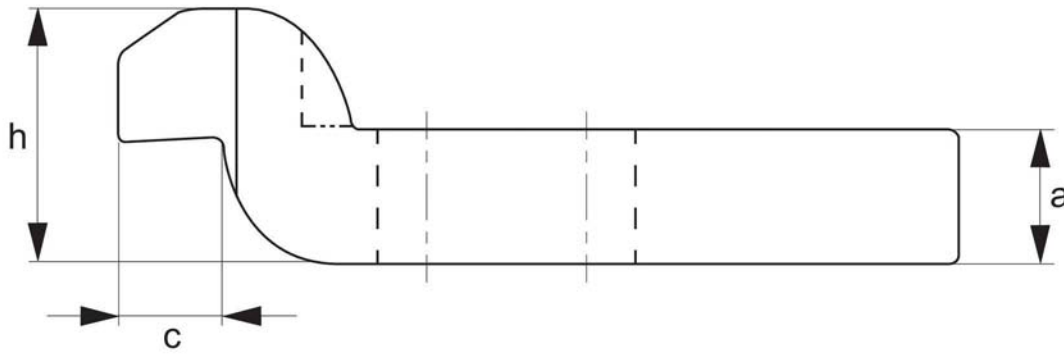


Goose-Neck Clamps

DIN 6316



10200



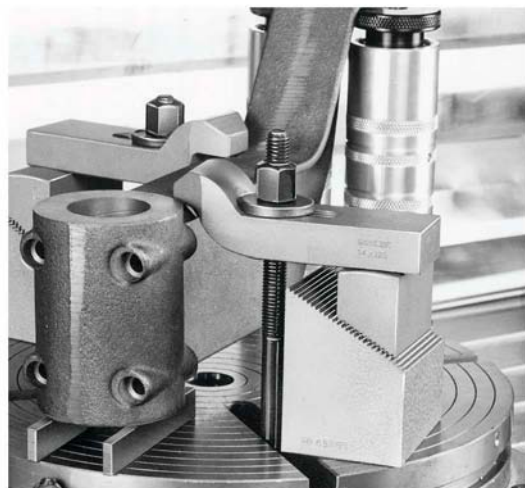
Material

Heat-treated steel, enamelled.

Technical Notes

() = not to DIN standard.
For T-bolts, washers and nuts see part 21000 to 24300 .

Order No.	b_1	l	For metric thread	For imperial thread	a	b_2	b_3	c	e_1	e_2	h	g
10200.W0007	6,6	60	M 6	1/4	10	20	10	8	22	20	9	81
10200.W0009	9	80	M 8	5/16	12	25	12	9	27.5	25	11	166
10200.W0011	11	100	M10	3/8	15	30	15	12	36	32	14	299
10200.W0014	14	125	M12, M14	1/2	20	40	20	16	44	40	18	678
10200.W0018	18	125	M16, M18	5/8	25	50	25	20	51.5	40	23	1049
10200.W0019	18	160	M16, M18	5/8	25	50	25	20	51.5	50	23	1366
10200.W0022	22	160	M20, M22	3/4	30	60	30	24	59	55	27	1911
10200.W0023	22	200	M20, M22	3/4	30	60	30	24	59	70	27	2417
10200.W0026	26	200	M24	1	(35)	70	35	(25)	76	60	32	3315
10200.W0027	26	250	M24	1	(35)	70	35	(25)	76.5	80	32	4132
10200.W0034	33	250	M30	1-1/4	40	80	40	40	96	80	45	5225
10200.W0035	33	315	M30	1-1/4	50	80	40	40	96	100	45	8459
10200.W0043	(43)	400	M36, M42	1-7/16, 1-1/2	60	100	50	50	105	120	55	17078

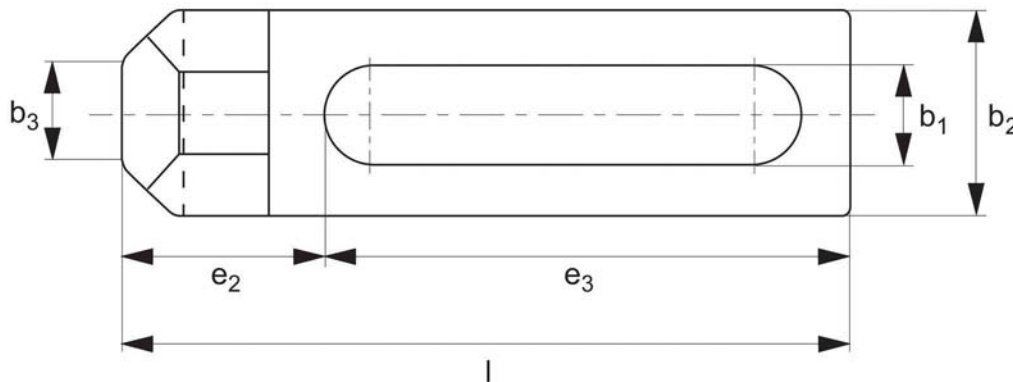
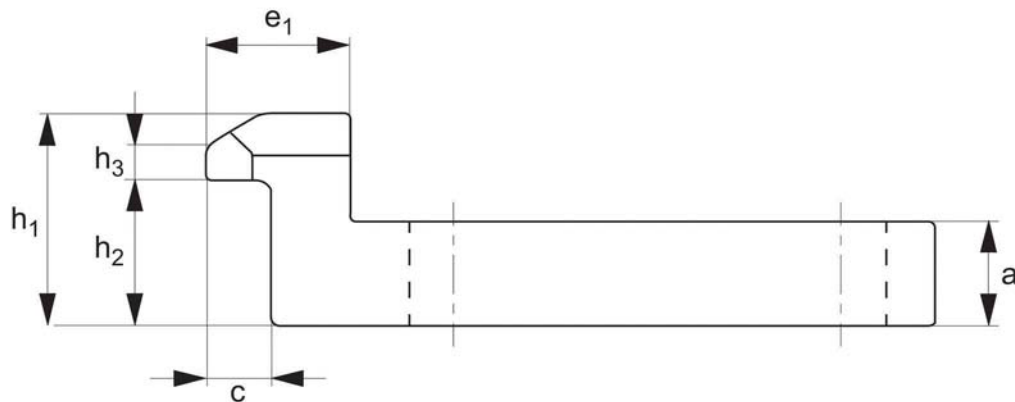


Stepped Clamps

long slot



10210




Material

Heat-treated steel, tempered, blackened.

Technical Notes

For T-bolts, washers and nuts see part 21000 to 24300.

Order No.	b_1	l	a	b_2	b_3	c	e_1	e_2	e_3	h_1	h_2	h_3	For metric thread	For imperial thread	 g
10210.W0107	6,6	55	8	15	8	5	11	15,5	36	16	11	2	M 6	1/4	39

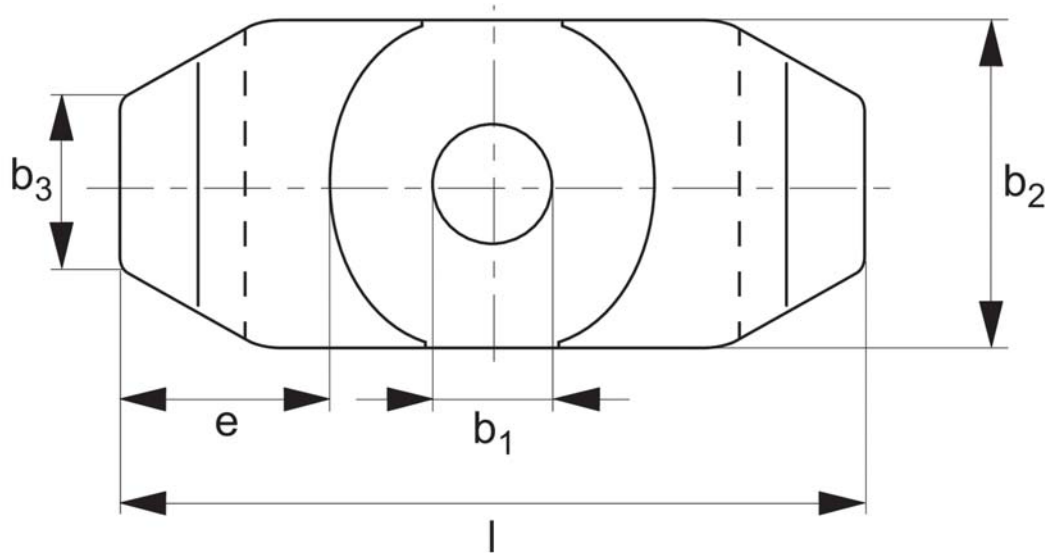
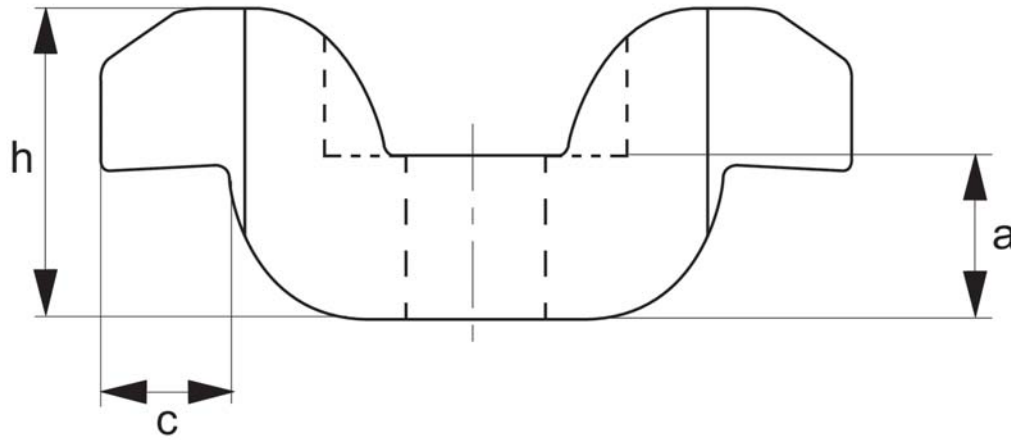
Double Goose-Neck Clamps




10220



Material
Tempered steel, varnished

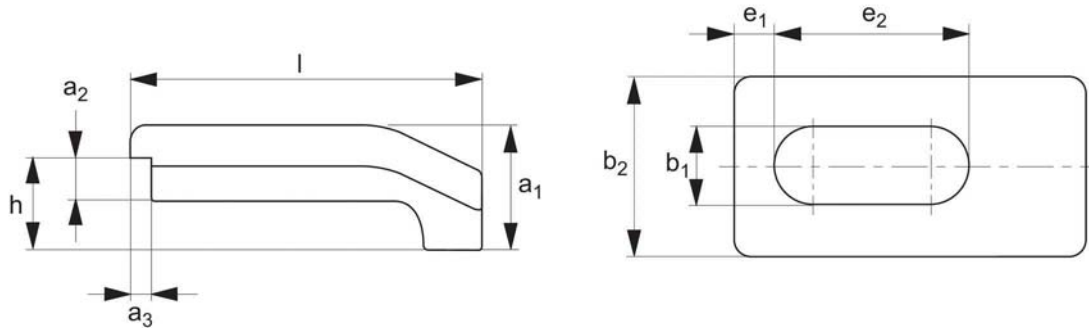


Order No.	b_1	l	For clamp screw	a	b_2	b_3	c	e	h	 g
10220.W0018	18	100	M12 - M18	20	40	20	16	26	40	620
10220.W0025	25	140	M20 - M24	30	60	30	24	38	60	2040

Machine Vice Clamps




10290



Material
Alloy steel, blackened.

Technical Notes
Supplied in pairs.

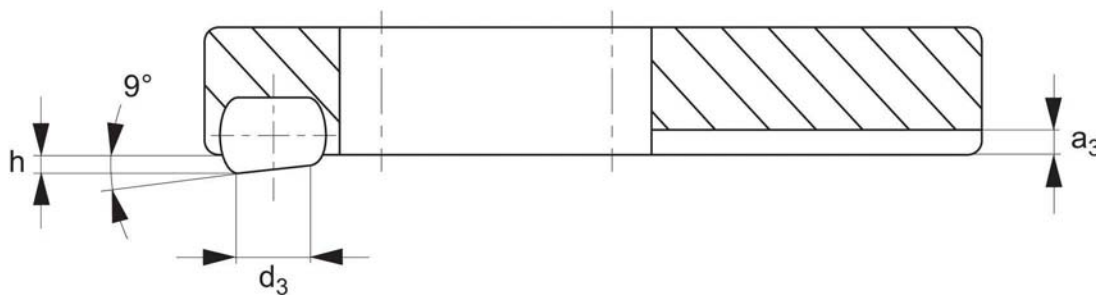
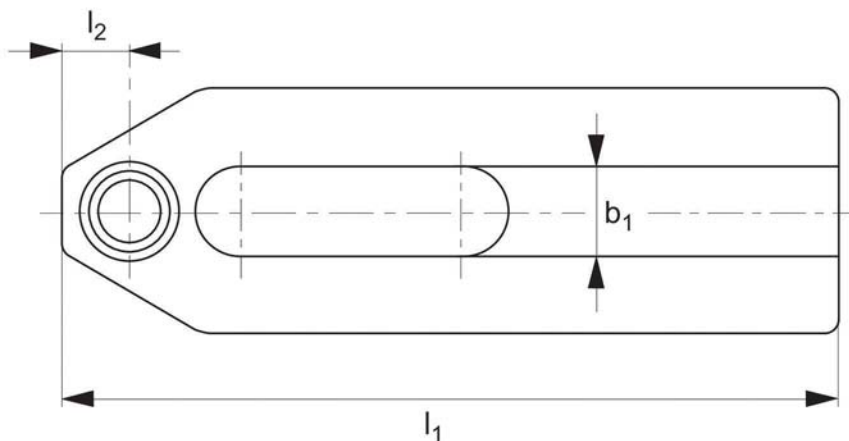
Order no.	b_1	b_2	l	For metric thread	For imperial thread	For jaw width	a_1	$a_2 \times a_3$	h	e_1	e_2	 g
10290.W0015	16,5	41	78	M12, 14, 16	1/2, 5/8	100	22,5	10x5,5	15	10	40	685

Plain Clamps

with self-aligning support



10300



Material


Body: heat-treated steel, blackened. Ball: ball-bearing steel, hardened, bright.

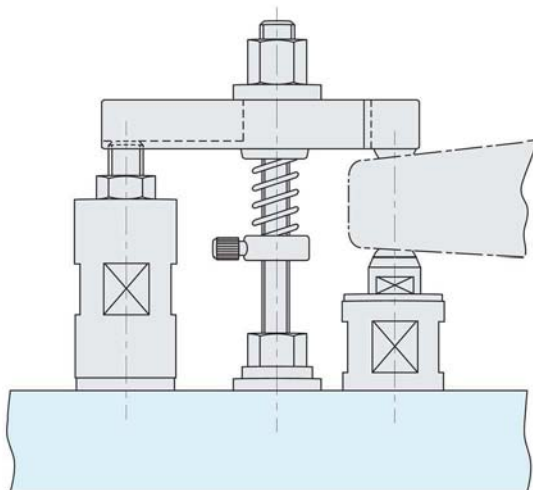
Technical Notes

Ball secured against turning. Other dimensions as no. 10000.

Tips

Provides alignment of the clamp with the workpiece, useful where there is some component variation. For suitable supporting screw see part no. 18400.

Order No.	b_1	l_1	d_3	a_3	h	l_2	ball \emptyset	 g
10300.W0007	6,6	50	5,8	2,5	1,6	5,0	8,5	61

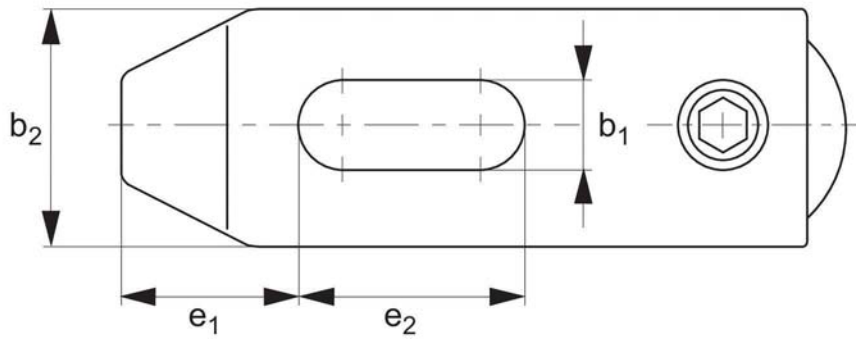
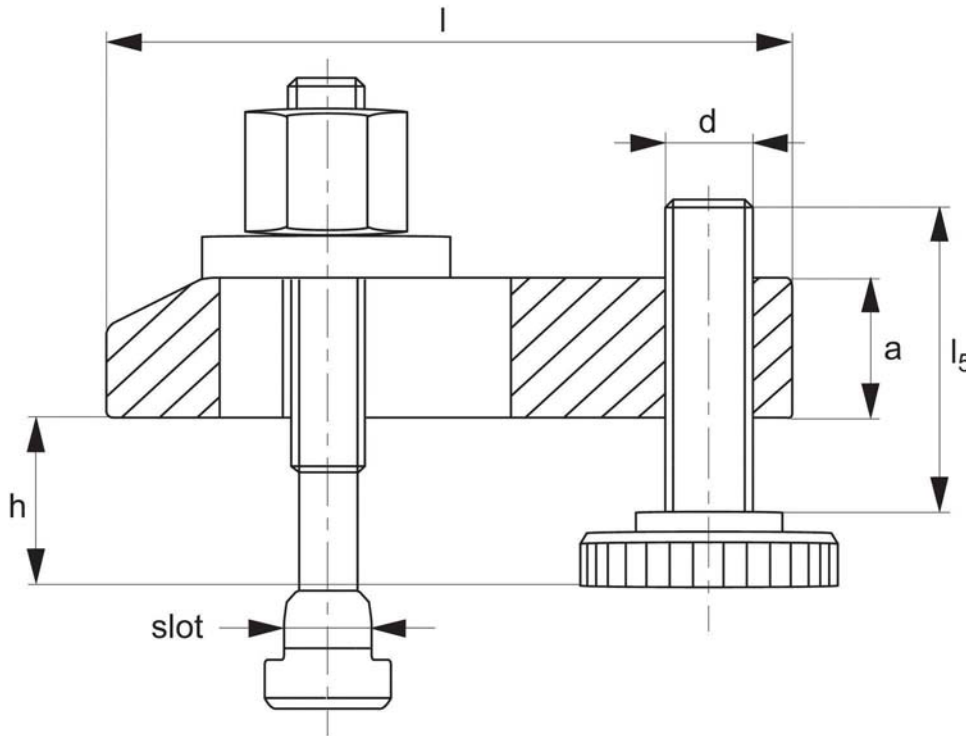


Adjustable Plain Clamps

with height adjusting screw



10400



Material


Heat-treated steel, enamelled.

Technical Notes

h* - dependent on depth of slot and position of fixture nut.

Tips

Often used for clamping press tools.


Order No.	Type	Slot	h*	b ₁ x l	T-bolt	d x l ₅	a	b ₂	e ₁	e ₂	 g
10400.W0010	Without T-bolt	10	8 - 37	11x80	-	M10x39	15	30	15	30	200
10400.W0012	Without T-bolt	12 & 14	10 - 47	14x100	-	M12x49	20	40	21	40	560
10400.W0014	Without T-bolt	12 & 14	10 - 92	14x100	-	M12x94	20	40	21	40	635
10400.W0016	Without T-bolt	16 & 18	13 - 52	18x125	-	M16x55	25	50	26	45	1110
10400.W0018	Without T-bolt	16 & 18	13 - 87	18x125	-	M16x90	25	50	26	45	1230
10400.W0020	Without T-bolt	20 & 22	16 - 65	22x160	-	M20x69	30	60	30	60	2050
10400.W0022	Without T-bolt	20 & 22	16 - 105	22x160	-	M20x69	30	60	30	60	2230
10400.W0024	Without T-bolt	24	20 - 83	26x200	-	M24x87	30	60	35	80	3200
10400.W0026	Without T-bolt	24	20 - 133	26x200	-	M24x137	30	70	35	80	3470
10400.W0028	Without T-bolt	24	20 - 80	26x250	-	M24x87	35	70	35	105	4340
10400.W0030	Without T-bolt	24	20 - 130	26x250	-	M24x137	35	70	35	105	4520
10400.W0032	Without T-bolt	30	24 - 150	33x315	-	M30x180	50	80	45	130	11215
10400.W0034	Without T-bolt	36 & 42	24 - 150	43x400	-	M30x180	80	100	80	170	24350
10400.W0110	With T-bolt	10	8 - 32	11x80	M10x10x80	M10x39	15	30	15	30	340
10400.W0112	With T-bolt	12	10 - 40	14x100	M12x12x100	M12x49	20	40	21	40	700
10400.W0113	With T-bolt	12	24 - 92	14x100	M12x12x160	M12x94	20	40	21	40	830
10400.W0114	With T-bolt	14	10 - 38	14x100	M12x14x100	M12x49	20	40	21	40	720
10400.W0115	With T-bolt	14	23 - 92	14x100	M12x14x160	M12x94	20	40	21	40	845
10400.W0116	With T-bolt	16	13 - 48	18x125	M16x16x125	M16x55	25	50	26	45	1400
10400.W0117	With T-bolt	16	15 - 83	18x125	M16x16x160	M16x90	25	50	26	45	1610
10400.W0118	With T-bolt	18	13 - 46	18x125	M16x18x125	M16x55	25	50	26	45	1400
10400.W0119	With T-bolt	18	13 - 81	18x125	M16x18x160	M16x90	25	50	26	45	1630
10400.W0120	With T-bolt	20	16 - 65	22x160	M20x20x160	M20x69	30	60	30	60	2600
10400.W0121	With T-bolt	20	21 - 105	22x160	M20x20x200	M20x109	30	60	30	60	2930
10400.W0122	With T-bolt	22	16 - 65	22x160	M20x22x160	M20x69	30	60	30	60	2770
10400.W0123	With T-bolt	22	19 - 105	22x160	M20x22x200	M20x109	30	60	30	60	2980
10400.W0124	With T-bolt	28	20 - 80	26x250	M24x28x200	M24x87	35	70	35	105	5486
10400.W0125	With T-bolt	28	30 - 130	26x250	M24x28x250	M24x137	35	70	35	105	5716

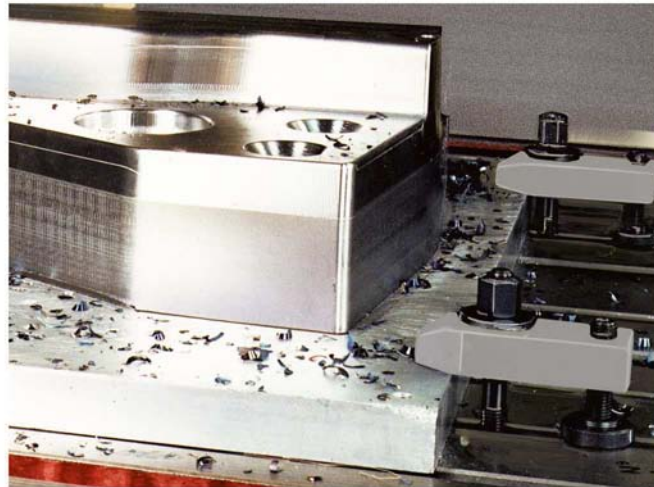
Adjustable Plain Clamps

with height adjusting screw



10400

Order No.	Type	Slot	h*	b ₁ x l	T-bolt	d x l ₅	a	b ₂	e ₁	e ₂	 g
10400.W0126	With T-bolt	36	24 - 150	26x250	M30x36x315	M30x180	50	80	45	130	11995
10400.W0127	With T-bolt	42	24 - 150	26x250	M30x36x315	M30x180	50	80	45	130	25683



Material

Heat-treated steel, enamelled.

Technical Notes

h* - dependent on depth of slot and position of fixture nut.

Tips

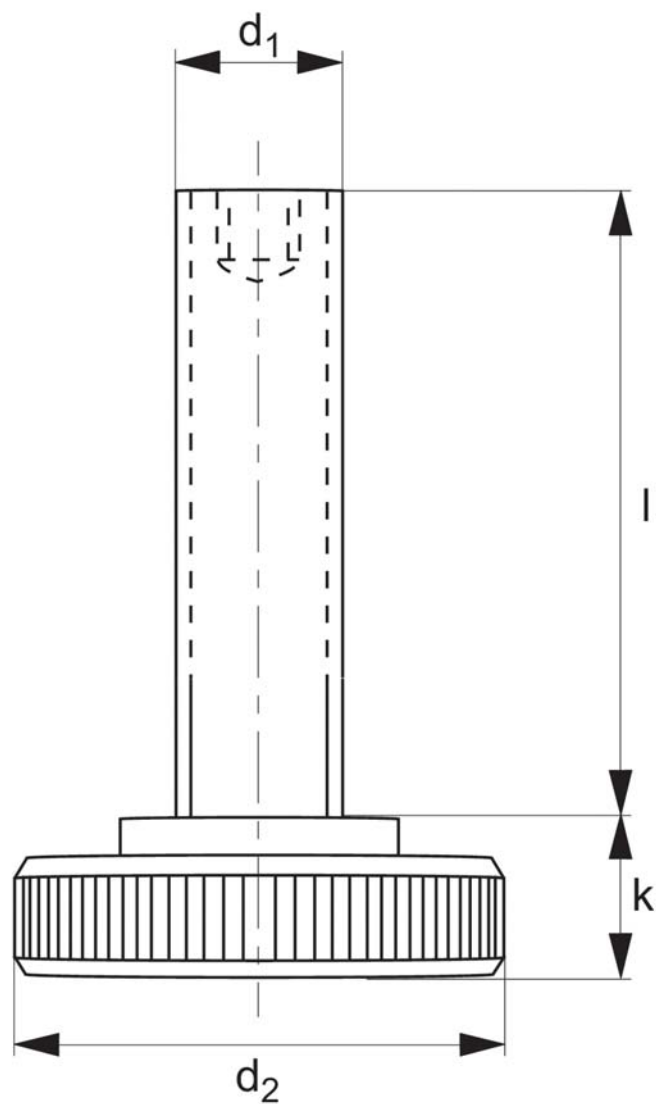
Often used for clamping press tools.

Support Screw

for adjustable clamps



10410



Material

Hardened steel, strength class 8.8.

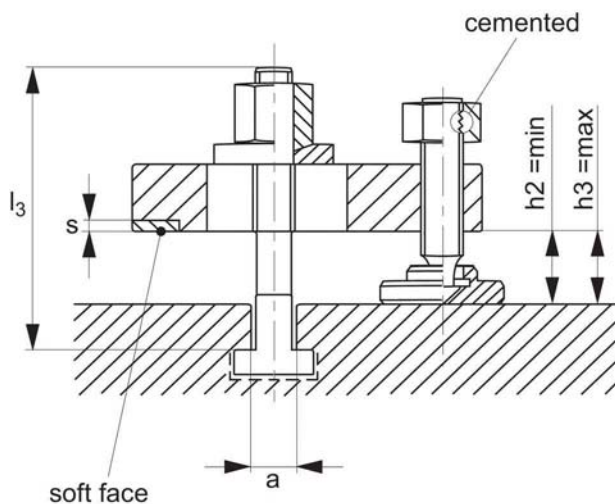
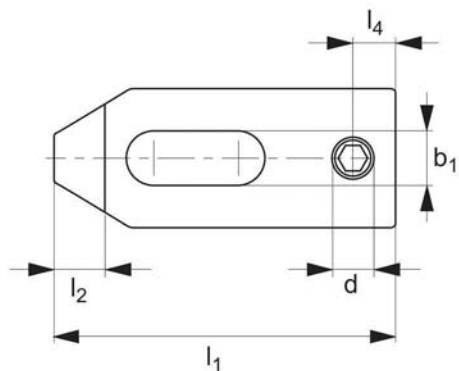
Order No.	$d_1 \times l$	d_2	k	$\frac{\Delta}{g}$
10410.W0013	M12x94	36	10	145
10410.W0017	M16x90	42	13	230
10410.W0021	M20x109	50	16	400
10410.W0025	M24x137	60	20	820
10410.W0030	M30x180	80	24	1704
10410.W0010	M10x39	30	8	52
10410.W0012	M12x49	36	10	96
10410.W0016	M16x55	42	13	180
10410.W0020	M20x69	50	16	320
10410.W0024	M24x87	60	20	590

Adjustable Plain Clamps

with soft brass face



10420




Material

Clamps: heat-treated steel, blackened.
Protective face: brass, brazed.

Technical Notes

The brass plate brazed onto the clamp protects the work-piece from damage under clamping. The clamp can be used either side.
For other dimensions please see no. 10000.

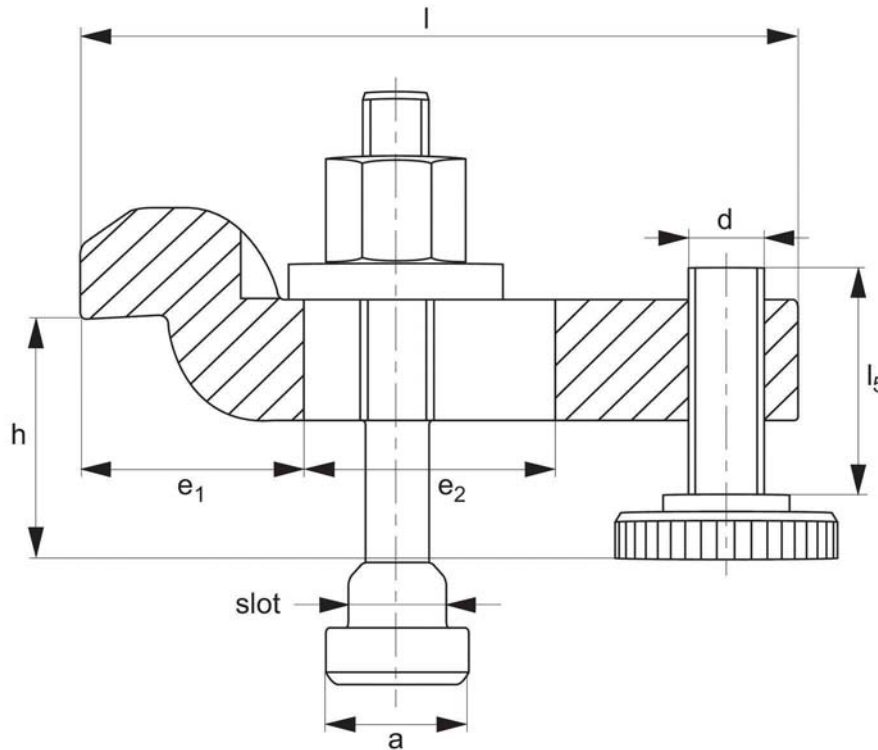
Order No.	Type	a	l ₃	b ₁	Min. c lamp. height h ₂	Max. clamp height h ₃	l ₁	d	l ₂	l ₄	s	 g
10420.W0015	With Adj. Screw & Bolt	8	50	9	8	16	60	M 8	10	8	2	200
10420.W0016	With Adj. Screw & Bolt	8	80	9	8	43	60	M 8	10	8	2	220
10420.W0025	With Adj. Screw & Bolt	10	65	11	10	22	80	M10	12	10	2	385
10420.W0026	With Adj. Screw & Bolt	10	100	11	10	58	80	M10	12	10	2	420
10420.W0035	With Adj. Screw & Bolt	12	80	14	10	28	100	M12	15	12	3	740
10420.W0036	With Adj. Screw & Bolt	12	125	14	10	71	100	M12	15	12	3	805
10420.W0037	With Adj. Screw & Bolt	14	80	14	10	26	100	M12	15	12	3	755
10420.W0038	With Adj. Screw & Bolt	14	125	14	10	71	100	M12	15	12	3	820
10420.W0045	With Adj. Screw & Bolt	16	100	18	12	31	125	M16	20	16	3	1470
10420.W0046	With Adj. Screw & Bolt	16	160	18	12	87	125	M16	20	16	3	1630
10420.W0047	With Adj. Screw & Bolt	18	100	18	12	32	125	M16	20	16	3	1490
10420.W0048	With Adj. Screw & Bolt	18	160	18	12	87	125	M16	20	16	3	1650
10420.W0011	With Adj. Screw	-	-	9	8	23	60	M 8	10	8	2	150
10420.W0012	With Adj. Screw	-	-	9	8	43	60	M 8	10	8	2	160
10420.W0021	With Adj. Screw	-	-	11	10	38	80	M10	12	10	2	295
10420.W0022	With Adj. Screw	-	-	11	10	58	80	M10	12	10	2	310
10420.W0031	With Adj. Screw	-	-	14	10	31	100	M12	15	12	3	590
10420.W0032	With Adj. Screw	-	-	14	10	71	100	M12	15	12	3	620
10420.W0041	With Adj. Screw	-	-	18	12	42	125	M16	20	16	3	1150
10420.W0042	With Adj. Screw	-	-	18	12	87	125	M16	20	16	3	1220
10420.W0010	Without Accessories	-	-	9	-	-	60	M 8	10	8	2	104
10420.W0020	Without Accessories	-	-	11	-	-	80	M10	12	10	2	211
10420.W0030	Without Accessories	-	-	14	-	-	100	M12	15	12	3	461
10420.W0040	Without Accessories	-	-	18	-	-	125	M16	20	16	3	917

Adjustable Goose-Neck Clamps

with height adjusting screw



10500



Material

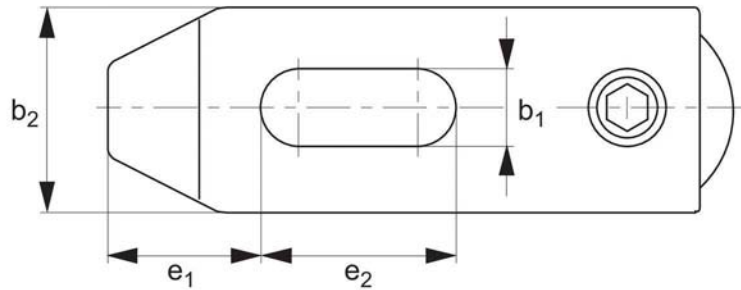
Heat-treated steel, enamelled.


Technical Notes

h^* - dependent on depth of T-slots and position of fixture nuts.

Tips

Particularly suitable for clamping low workpieces. The clamping height can be steplessly adjusted by means of the adjusting screw.



Order No.	Type	Slot	h^*	$b_1 \times l$	 g
10500.W0010	With T-bolt	10	22 - 46	11x100	440
10500.W0012	With T-bolt	12	28 - 58	14x125	906
10500.W0014	With T-bolt	14	28 - 56	14x125	926
10500.W0016	With T-bolt	16	36 - 71	18x160	1859
10500.W0018	With T-bolt	18	36 - 69	18x160	1875
10500.W0020	With T-bolt	20	43 - 92	22x200	3322
10500.W0022	With T-bolt	22	43 - 92	22x200	3352
10500.W0110	Without T-bolt	10	22 - 51	11x100	344
10500.W0112	Without T-bolt	12	28 - 65	14x125	761
10500.W0116	Without T-bolt	16	36 - 75	18x160	1516
10500.W0120	Without T-bolt	20	43 - 92	22x200	2669
10500.W0124	Without T-bolt	24	52 - 115	26x200	3810

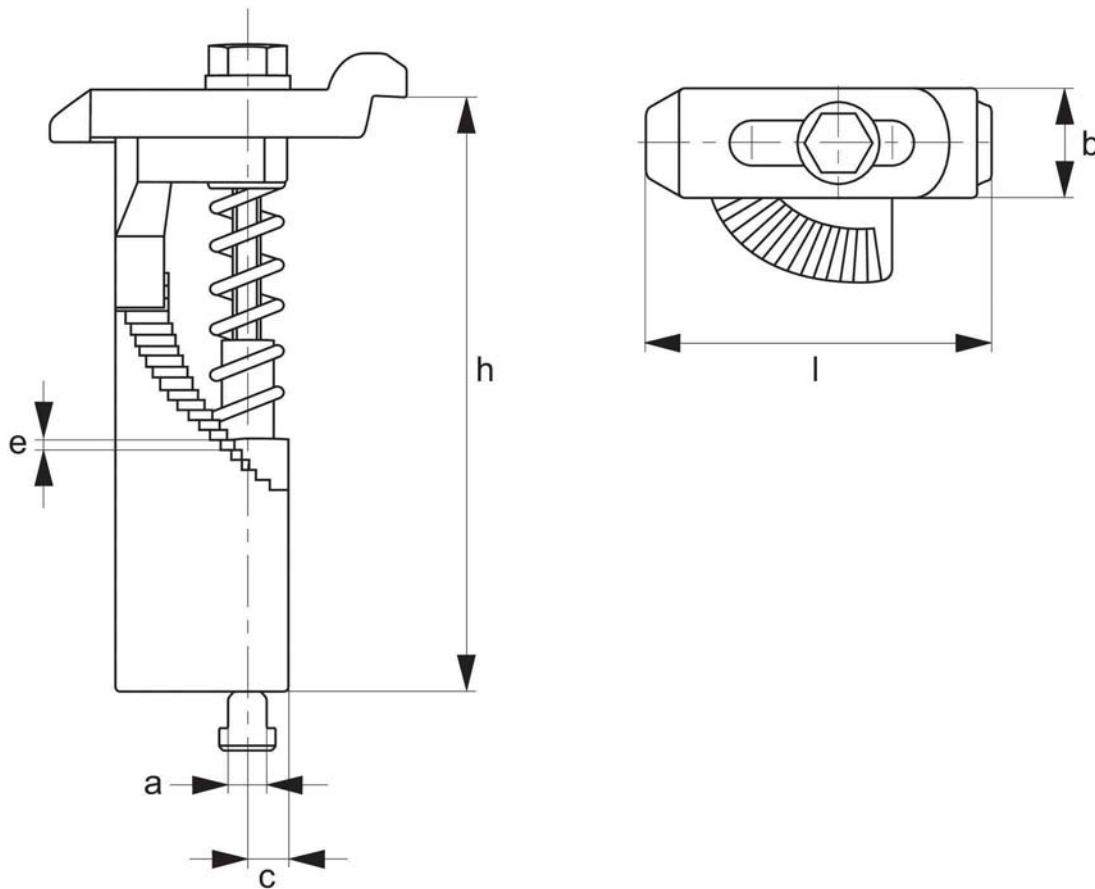
Order No.	T-bolt	$d \times l_s$	a	b_2	e_1	e_2
10500.W0010	M10x10x80	M10x39	15	30	36	32
10500.W0012	M12x12x100	M12x49	20	40	44	40
10500.W0014	M12x14x100	M12x49	25	50	44	40
10500.W0016	M16x16x125	M16x55	25	50	51.5	50
10500.W0018	M16x18x125	M16x55	25	50	51.5	50
10500.W0020	M20x20x160	M20x69	30	60	59	70
10500.W0022	M20x22x160	M20x69	30	60	59	70
10500.W0110	-	M10x39	15	30	36	32
10500.W0112	-	M12x49	20	40	44	40
10500.W0116	-	M16x55	25	50	51.5	50
10500.W0120	-	M20x69	30	60	59	70
10500.W0124	-	M24x87	35	70	76.5	60

Adjustable Step Pillar Clamps

with goose-neck



10550



Material


Forged steel, thread quality 8.8.

Technical Notes

Clamping unit for quick application. The compact construction ensures a small footprint on the machine table. Allows clamping over a wide height range with minimum fuss.

Tips

Please see part 24000 for T-nuts, supplied separately.

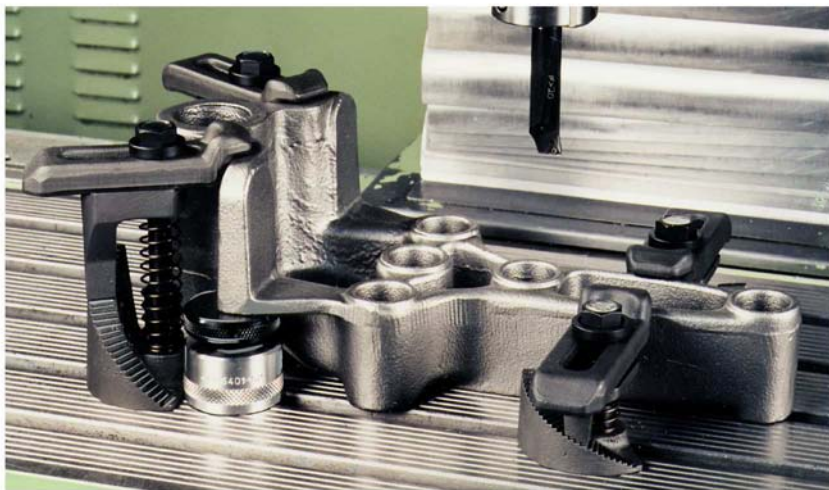
Order No.	Size	a Slot	b	c	e	h	l	 g
10550.W0120	0	12	34	14	0,75	0 - 45	140	700
10550.W0121	1	12	34	14	0,75	15 - 45	110	600
10550.W0122	2	12	34	15	1,25	30 - 75	112	800
10550.W0123	3	12	34	16	2,50	60 - 135	112	1200
10550.W0124	4	12	34	18	2,50	120 - 195	112	1700
10550.W0125	5	12	34	19	2,50	180 - 255	112	2200
10550.W0126	0	14	34	14	0,75	0-45	140	700
10550.W0127	1	14	34	14	0,75	15-45	112	600
10550.W0128	2	14	34	15	1,25	30-75	112	800
10550.W0129	3	14	34	16	2,50	60-135	112	1200
10550.W0130	4	14	34	18	2,50	120-195	112	1700
10550.W0131	5	14	34	19	2,50	180-255	112	2200
10550.W0132	0	16	50	20	1,25	0 - 70	160	1900
10550.W0133	1	16	50	20	1,25	25 - 70	125	1700
10550.W0134	2	16	50	21	2,50	50 - 120	125	2500
10550.W0135	3	16	50	21	3,75	100 - 220	125	3540
10550.W0136	4	16	50	24	3,75	200 - 320	125	4900
10550.W0137	0	18	50	20	1,25	0-70	160	1870
10550.W0138	1	18	50	20	1,25	25-70	125	1670
10550.W0139	2	18	50	21	2,50	50-120	125	2500
10550.W0140	3	18	50	21	3,75	100-220	125	3580
10550.W0141	4	18	50	24	3,75	200-320	125	4750

Adjustable Step Pillar Clamps

with goose-neck



10550



Material

Forged steel, thread quality 8.8.

Technical Notes

Clamping unit for quick application. The compact construction ensures a small footprint on the machine table. Allows clamping over a wide height range with minimum fuss.

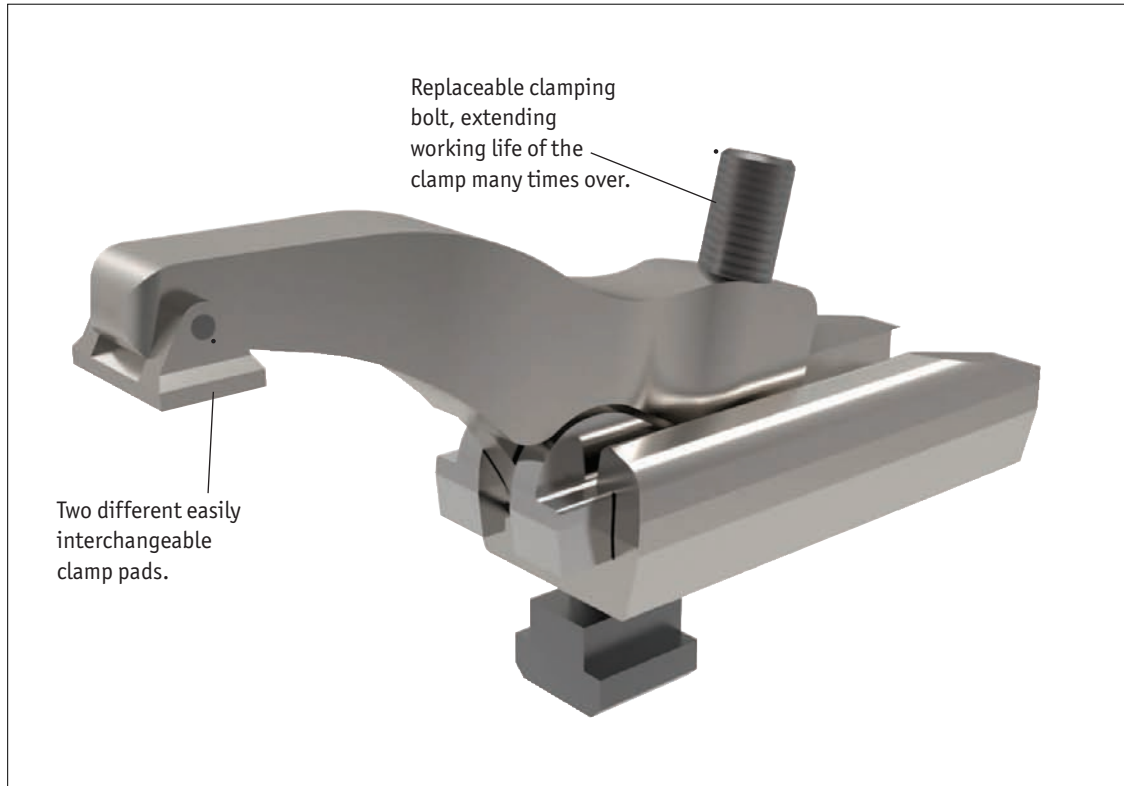
Tips

Please see part 24000 for T-nuts, supplied separately.

10585**Quick Power Clamp**

Robust quick action clamp, to heights of 180mm with stepless adjustment of 63mm, providing clamping forces up to 30 or 43kN. Ideal where quick and easy clamping is required. Clamp designed to slide in and out of clamping area for easy loading and unloading of components.

**UPTO
43kN
CLAMP FORCE**

**Quick installation**

- Reduce set-up times.
- Quicker component loading/unloading.
- Excellent value.
- Robust design.
- Clamping height from 0 to 180mm.
- Adjustable clamping range of up to 63mm.
- High clamping force up to 43kN.
- Suitable for T-slots 14 to 18.

Advantages

1. Fix base to machine bed.



2. Slide clamp onto base.



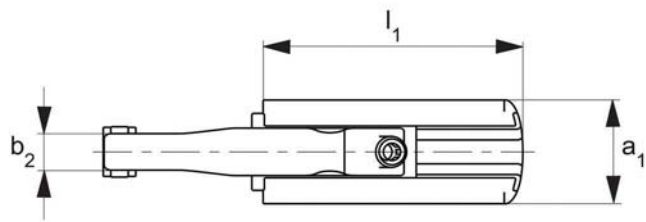
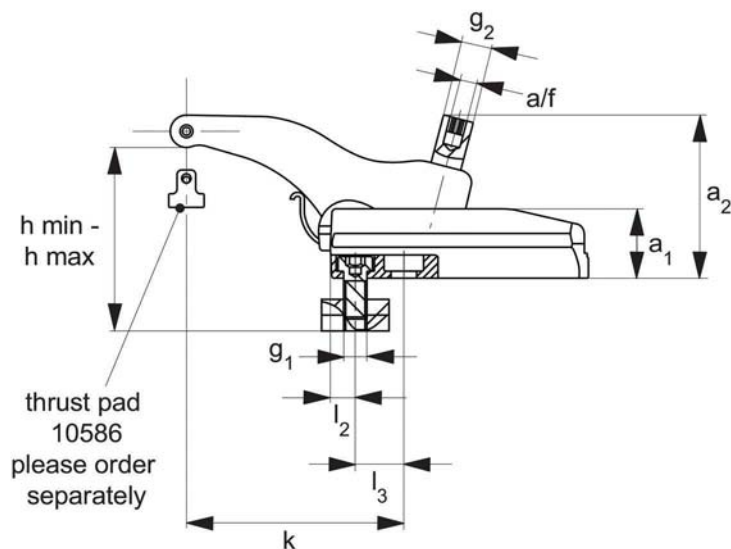
3. Clamp component.

Power Clamps

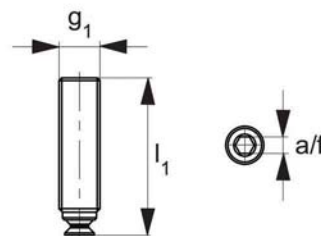
for injection moulding



10585



clamp



clamp screw

Material

Alloyed tempered steel, forged.

Technical Notes

For variable clamping heights, with sliding base attachment. Design incorporates two joints for minimal wear. Low installation height provided by adjusting bolt with hexagon socket.

Our new design power clamps

Tips

Application:

1. Position and fasten carrier element on the tool plate.
 2. Push the base element into the desired position on the carrier table.
- It is now ready for use.
3. Adjust the height of the clamping arm with the adjusting bolt and clamp the tool.
 4. The robust design enables quick and easy clamping.

Important Notes

Clamp supplied with clamp screw. For optional thrust pads, see part 10586.

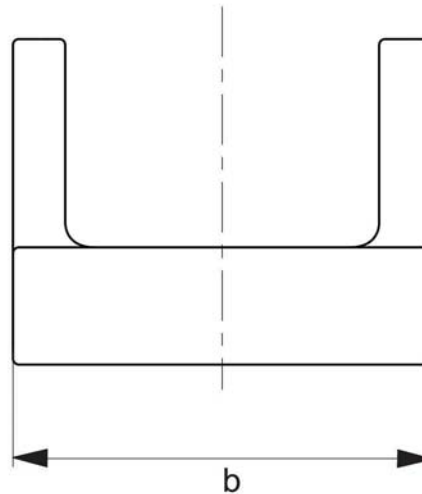
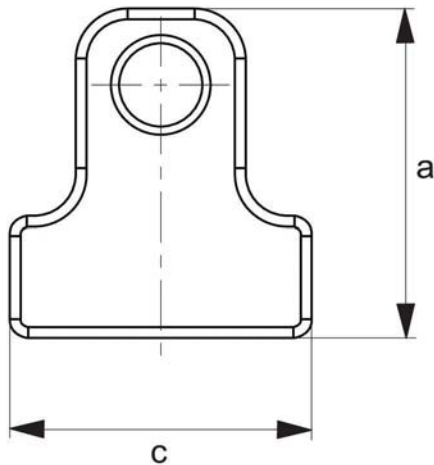
Order No.	Type	Size	Max . clamping force kN.	T-slot	g	h min.	h max.	k	a_1	a_2	b_1	b_2	g_2	l_1	l_2	l_3	$\frac{g}{g}$
10585.W0143	Clamp	30	30	14	M12	6	68	13-110	36	85	54	18	M16	135	13	25	2013
10585.W0183	Clamp	30	30	18	M16	6	68	16-114	36	85	54	18	M16	135	16	28	2045
10585.W0184	Clamp	43	43	18	M16	5	80	16-134	42	105	60	20	M20	155	16	32	3158
10585.W0530	Clamp Screw	30	30	-	M16	-	-	-	-	-	-	-	-	62	-	-	80
10585.W0540	Clamp Screw	43	43	-	M20	-	-	-	-	-	-	-	-	78	-	-	165

Thrust Pads

for quick power clamp no. 10586



10586




Material

Thrust pads: stainless steel.

Technical Notes

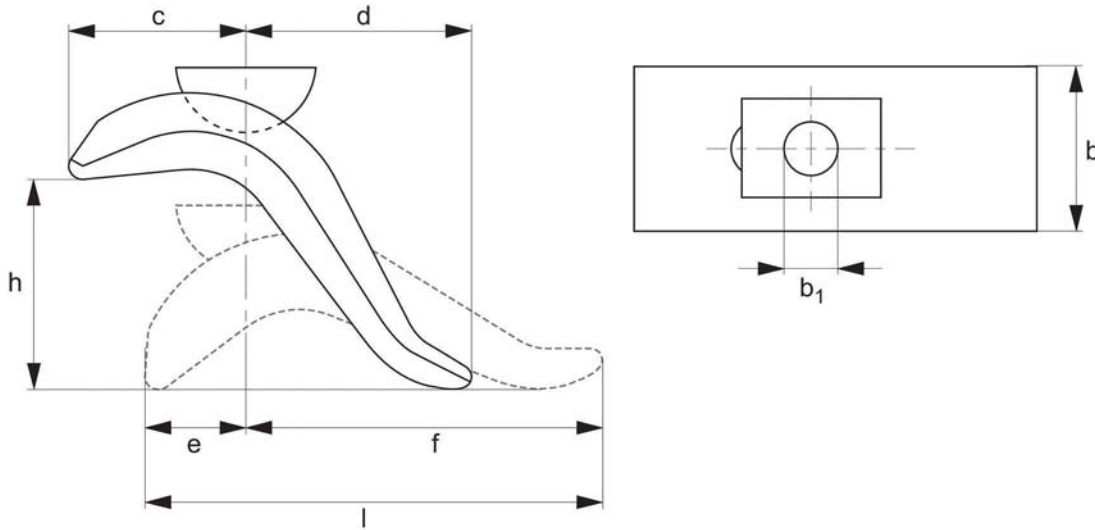
Complete with dowel pins, clamping thrust pads for Power Clamp no. 10585. Easily interchangeable via removable dowel pin (supplied).

Order No.	Type	For clamp size	a	b	c	 g
10586.W0530	Pad, Smooth	30	19,5	25	18	28
10586.W0535	Pad, Ribbed	30	19,5	25	18	27
10586.W0540	Pad, Smooth	40	24,0	30	20	47
10586.W0545	Pad, Ribbed	40	24,0	30	20	48

Step Adjustable Clamps



10600



Material

Forged steel, tempered and burnished.

Technical Notes

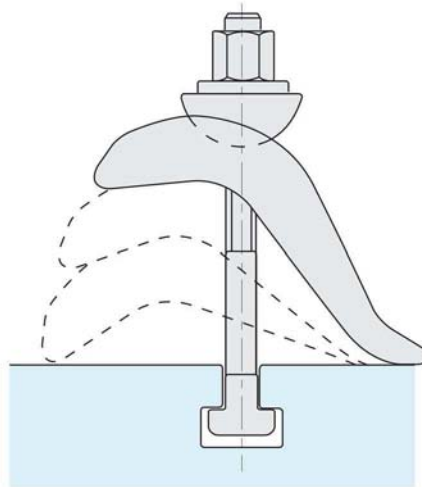
Ideal for clamping components of varying heights and press tools - requires no support or packing pieces.

Tips

With T-bolt Type- supplied with T-bolt (no. 21000) as shown, as well as matching washer (no. 25000) and fixture nut (no. 24300).

Without T-bolt Type- no accessories supplied.

Order No.	Type	a/f	b ₁	c	d	e	f	Size	h clamping height	b x l	g
10600.W0012	With T-bolt	12	17	55	60	30	110	M12x12x125	0 - 50	50x140	1070
10600.W0014	With T-bolt	14	17	55	60	30	110	M12x14x125	0 - 50	50x140	1080
10600.W0016	With T-bolt	16	17	55	60	30	110	M16x16x160	0 - 75	50x140	1270
10600.W0018	With T-bolt	18	17	55	60	30	110	M16x18x160	0 - 75	50-140	1280
10600.W0020	With T-bolt	20	21	70	80	40	135	M20x20x200	0 - 85	60-175	2300
10600.W0022	With T-bolt	22	21	70	80	40	135	M20x22x200	0 - 85	60x175	2370
10600.W0117	Without T-bolt	-	17	55	60	30	110	-	75	50x140	900
10600.W0121	Without T-bolt	-	21	70	80	40	135	-	85	60x175	1600

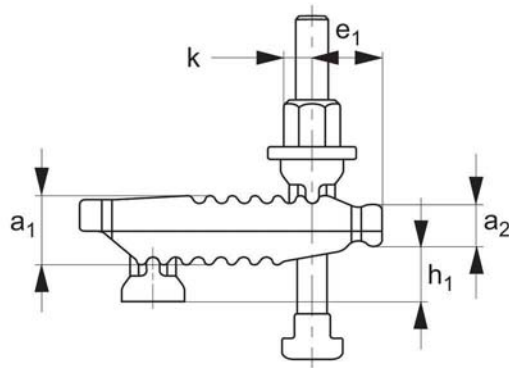


"Crocodile" Adjustable Clamp

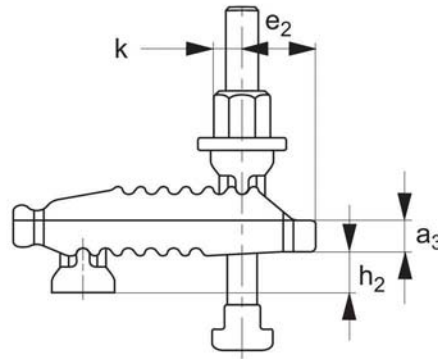
with support heel, complete with T-bolt



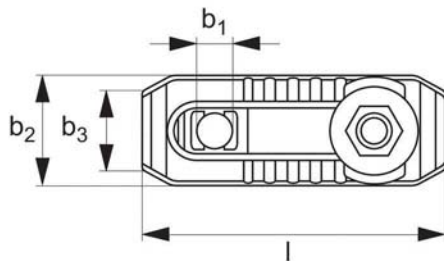
10603



clamping on upper side



clamping on lower side



Material

Clamp: tempered and galvanised steel.

T-bolt: forged steel with rolled thread to strength class 8,8. See part 21000 for details.

Washer: hardened steel. See part 25000 for details.

Nut: heat treated steel to strength class 10. See part 24300 for details.

Technical Notes


Ideal for clamping components of varying heights - requires no additional support or packing pieces.

Continuously adjustable clamp over range of heights (see dimension h_1 in table), with high clamping force. Support heel and stud counter hold are non-detachable, making for one single piece clamp which is quick and easy to use.

Supplied complete with T-bolt, washer and nut - see data table.

Tips

* Clamping forces quoted base on using quality stud and nut of strength class 8,8 or better and optimal positioning of clamp and good condition of thread.

Order No.	b_1	Slot	Clamping bolt DIN 787	Clamping force max. * kN	h_1	a_1	a_2	a_3	$b_2 \times l$	b_3	e_1	e_2	h_2	k	
10603.W0011	13	10	M10x10x100	30	0 - 40	27	17	12	44x115	30	25	30	18	11	613
10603.W0012	13	12	M12x12x125	30	0 - 55	27	17	12	44x115	30	25	30	18	11	686
10603.W0013	17	12	M12x12x160	35	0 - 70	36	21	17	55x150	41	35	36	20	12	1591
10603.W0014	13	14	M12x14x125	30	0 - 55	27	17	12	44x115	30	25	30	18	11	705
10603.W0015	17	14	M12x14x160	35	0 - 70	36	21	17	55x150	41	35	36	20	12	1610
10603.W0016	17	16	M16x16x160	40	0 - 70	36	21	17	55x150	41	35	36	20	12	1798
10603.W0017	21	16	M16x16x200	55	0 - 80	42	27	20	62x187	30	44	44	30	14	2715
10603.W0018	17	18	M16x18x160	40	0 - 70	36	21	17	55x150	41	35	36	20	12	1818
10603.W0020	21	18	M16x18x200	55	0 - 80	42	27	20	62x187	30	44	44	30	14	3018
10603.W0021	21	20	M20x22x200	60	0 - 80	42	27	20	62x187	30	44	44	30	14	3018
10603.W0022	21	22	M20x22x200	60	0 - 80	42	27	20	62x187	30	44	44	30	14	3060
10603.W0023	25	20	M20x20x250	70	0 - 100	51	34	24	70x235	30	60	47	31	17	4368
10603.W0024	25	24	M24x24x250	75	0 - 100	51	34	24	70x235	30	60	47	31	17	4895
10603.W0025	25	28	M20x22x250	70	0 - 100	51	34	24	70x235	30	60	47	31	17	4410
10603.W0028	25	28	M24x28x250	75	0 - 100	51	34	24	70x235	30	60	47	31	17	4966



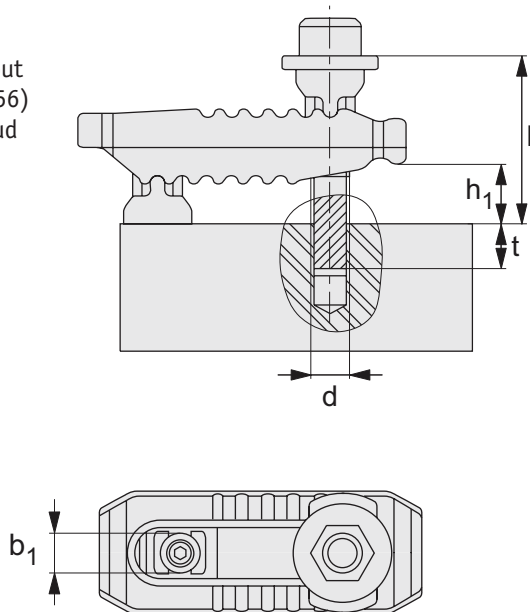
10603

Support Extension

Recommendations

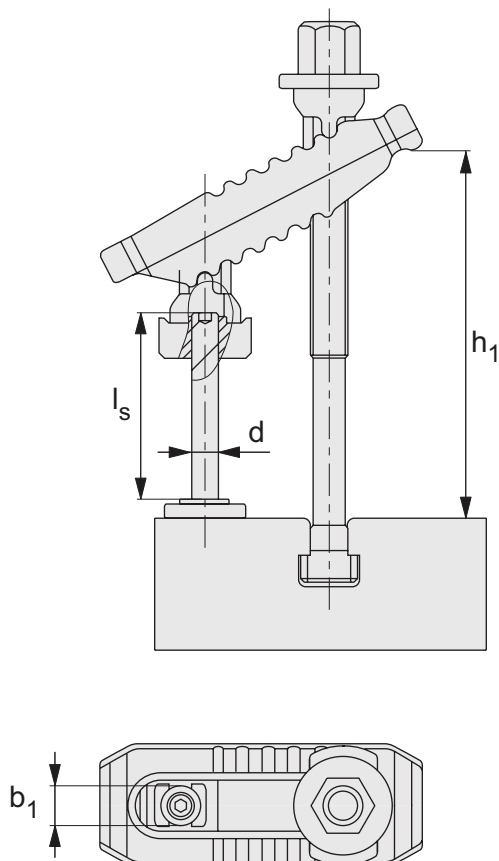
Installation recommendations

Installation dimensions for clamp CL0554 (without support extension CL0556) when using clamping stud FP0315



b_1 slot	Stud FP0315 size $d \times l$	Thread depth t	Achievable clamping range height h_1
13	M10x80	15-31	4-25
	M10x90	15-31	17-40
	M10x100	15-31	4-25
	M12x80	18-33	0-20
	M12x90	18-33	10-34
	M12x100	18-33	22-50
17	M12x90	18-33	0-22
	M12x110	18-33	24-50
	M12x120	18-33	38-66
	M16x100	24-43	0-26
	M16x110	24-44	12-40
	M16x120	24-44	26-55
21	M16x120	24-44	2-29
	M16x130	24-44	15-43
	M16x150	24-44	43-72
	M20x140	30-52	18-48
	M20x150	30-52	31-63
	M20x160	30-52	45-78
25	M20x160	30-52	23-54
	M20x180	30-52	51-83
	M20x195	34-52	72-100
	M24x160	36-48	0-15
	M24x180	36-60	10-42
	M24x195	36-60	37-71

Installation dimensions for clamp CL0554 (with support extension CL0556) when using t-slot bolt FP0310.



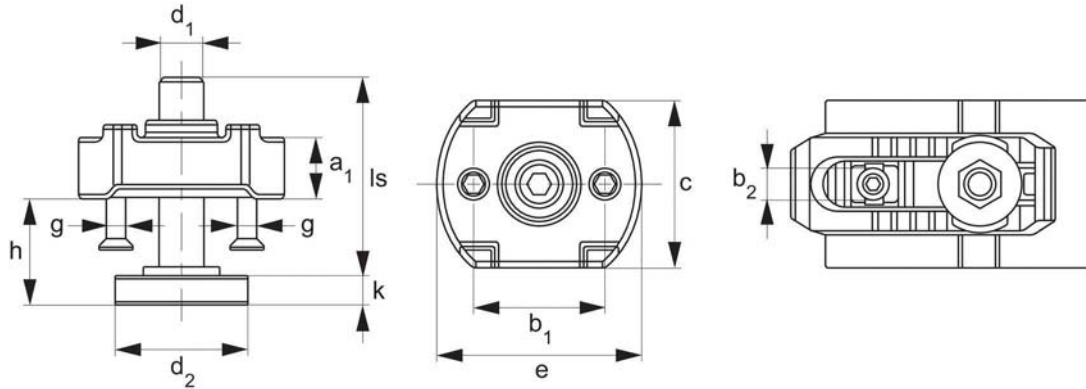
b_1 slot	CL0556 support extension $l_s \times d$	T-Slot FP0310 $d \times \text{slot} \times l$	Achievable clamping range height h_1
13	M10x39	M10x10x100	18-31
	M10x39	M12x12x160	18-95
	M10x39	M12x14x160	18-95
17	M12x49	M12x12x200	26-123
	M12x49	M12x14x200	26-123
	M12x49	M16x16x200	26-123
	M12x49	M16x18x200	26-123
	M12x94	M12x12x200	26-120
	M12x94	M12x14x200	26-120
	M12x94	M16x16x250	26-166
	M12x94	M16x18x250	26-166
	M16x55	M16x16x250	33-141
	M16x55	M16x18x250	33-141
21	M16x55	M20x20x250	33-141
	M16x55	M20x22x250	33-141
	M16x90	M16x16x250	33-150
	M16x90	M16x18x250	33-150
	M16x90	M20x20x315	33-173
	M16x90	M20x22x315	33-173
	M20x69	M20x20x315	41-177
	M20x69	M20x22x315	41-177
	M20x69	M24x24x315	41-177
	M20x69	M24x28x315	41-177
25	M20x109	M20x20x315	41-197
	M20x109	M20x22x315	41-193
	M20x109	M24x24x315	41-180
	M20x109	M24x24x315	41-180
	M20x109	M24x28x315	41-180

Support Extension

continous adjustments



10604



Material


Body & support screw: steel, zinc plated and hardened.

Technical Notes

Support extension is screwed to the counterholder of the crocodile to increase the clamping height.

Tips

Continuous adjustment of clamping heights.

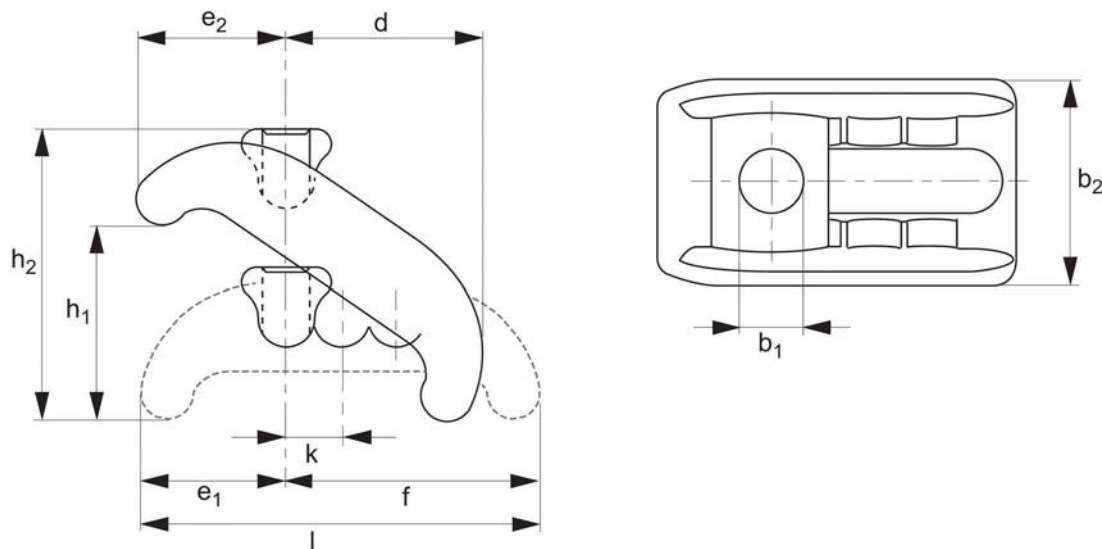
Order No.	d x ls	a ₁	b ₁	b ₂	c	d ₁	e	g	h ₁	 g
10604.W0010	M10 x 39	10	30	13	30	30	44	M 5	8 - 30	197
10604.W0016	M12 x 49	16	35	17	42	36	54	M 5	10 - 37	433
10604.W0018	M12 x 94	16	35	17	42	36	54	M 5	10 - 80	473
10604.W0020	M16 x 55	20	40	21	50	42	60	M 5	13 - 41	608
10604.W0022	M16 x 90	20	40	21	50	42	60	M 5	13 - 73	640
10604.W0025	M20 x 69	25	50	25	50	50	70	M 6	16 - 52	1136
10604.W0027	M20 x 109	25	50	25	50	50	70	M 6	16 - 91	1396

Stepless Adjustable Clamps

standard version



10620



Material

Tempered and galvanized steel, blue passivated.


Technical Notes

Ideal for press tool clamping. Clamp body has long slot for easy positioning.

Tips

Supplied without T-bolt or nut, for these parts see no. 21000, and no. 24400.

See table below for selection of correct T-bolt to achieve stated clamping height.

Order No.	b ₁	T-slot	For thread	h ₂	h ₁ clamping height	b ₂ x l	e ₂	d	e ₁	f	k	 g
10620.W0012	13	12 & 14	M12	52	0 - 35	38x88	28	48	23	68	14	260
10620.W0016	18	16 & 18	M16	80	0 - 55	56x130	38	74	29	101	18	809
10620.W0020	22	20 & 22	M20	98	0 - 65	66x140	46	80	32	112	20	1253
10620.W0026	26	24 & 28	M24	110	0 - 75	76x174	52	100	39	135	24	1718
10620.W0032	32	36	M30	118	0 - 80	90x200	61	110	44	156	28	2785

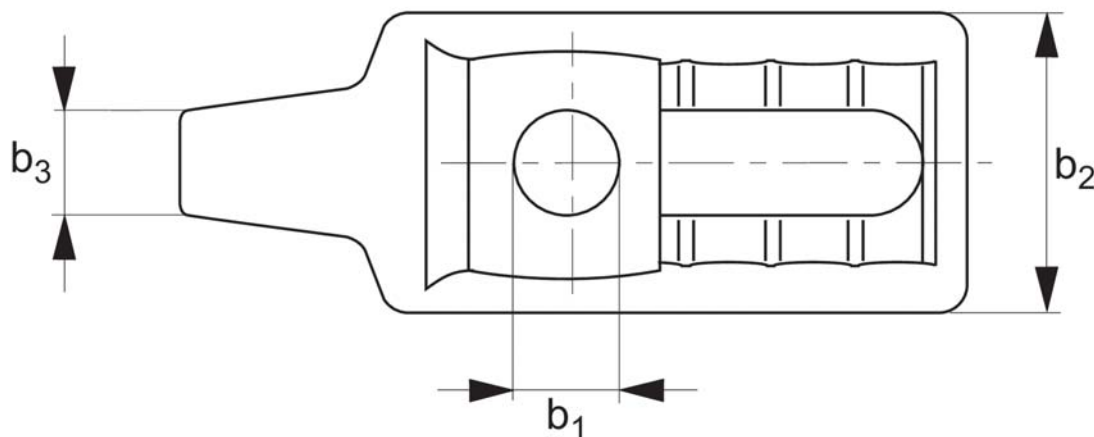
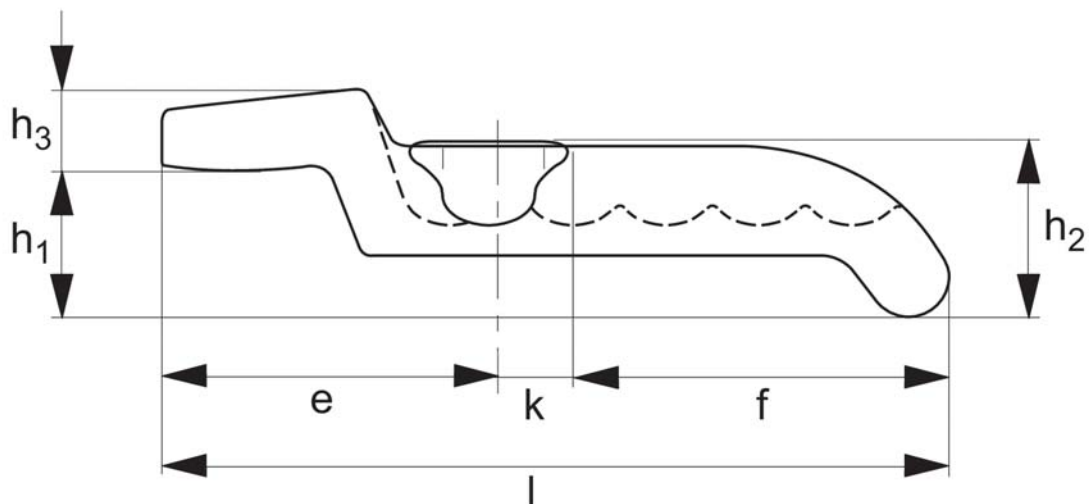


Stepless Adjustable Clamps

long slot version



10640



Material

Tempered and galvanized steel, blue passivated.


Technical Notes

Ideal for press tool clamping. Clamp body has a long slot for easy positioning.

Tips

Supplied without T-bolt or nut, for these parts see no. 21000, and no. 24400.

See table below for selection of correct T-bolt to achieve stated clamping height.

Order No.	b_1	T-slot	For thread	h_2	h_1 clamping height	$b_2 \times l$	b_3	e	f	k	h_3	 g
10640.W0022	22	20 & 22	M20	60	25 - 50	66x200	20	88	112	20	18	1600
10640.W0026	26	24 & 28	M24	70	30 - 70	76x232	23	97	135	24	22	2180
10640.W0032	32	36	M30	80	40 - 75	90x263	25	107	156	28	25	3530