

1

2

3

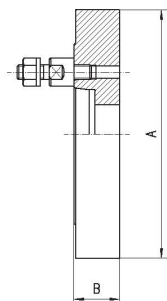
4

5

6

SEMI-MACHINED ADAPTER PLATES

Type 8232
DIN 55027

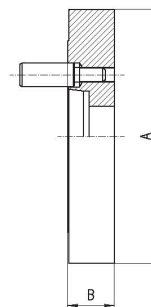


- Cast-iron adapters for plain back self-centering and independent chuck
- Rough on the chuck side (for mounting instructions, see the chuck operations manual)

Code No.	Size [mm]	Short taper 1:4	A mm	B mm	kg
358232010900	100	3	102	18,0	1,8
358232030200	125	3	127	19,5	2,4
358232040400	125	4	127	19,5	2,4
358232060800	160	3	162	-	4,2
358232070000	160	4	162	24,0	4,2
358232080100	160	5	162	24,0	4,2
358232100800	200	4	203	-	12,0
358232110000	200	5	203	38,0	12,0
358232120100	200	6	203	33,0	12,0
358232150700	250	5	253	33,0	16,0
358232160900	250	6	253	50,0	16,0
358232170000	250	8	253	46,0	16,0
358232200900	315	6	318	33,0	22,0
358232210000	315	8	318	55,0	22,0
358232220200	315	11	318	47,0	22,0
358232250800	400	8	405	43,0	42,0
358232260000	400	11	405	47,0	42,0
358232300000	500	8	505	45,0	72,0
358232310100	500	11	505	45,0	72,0
358232350900	630	11	635	45,0	105,0
358232360000	630	15	635	56,0	105,0
358232380400	800	11	385	45,0	130,0
358232390600	800	15	408	45,0	130,0

SEMI-MACHINED ADAPTER PLATES

Type 8242
DIN 55029



- Cast-iron adapters for plain back self-centering and independent chuck
- Rough on the chuck side (for mounting instructions, see the chuck operations manual)

Code No.	Size [mm]	Short taper 1:4	A mm	B mm	kg
358242010600	100	3	102	28	1,8
358242030000	125	3	127	50	2,4
358242040100	125	4	127	30	2,4
358242050300	160	3	162	50	4,2
358242060500	160	4	162	55	4,2
358242070700	160	5	162	35	4,2
358242120900	200	4	203	44	12,0
358242130000	200	5	203	50	12,0
358242140200	200	6	203	35	12,0
358242170800	250	5	253	49	16,0
358242180000	250	6	253	49	16,0
358242190100	250	8	253	49	16,0
358242220000	315	6	318	70	22,0
358242230100	315	8	318	55	22,0
358242240300	315	11	318	55	22,0
358242280000	400	8	405	70	42,0
358242290200	400	11	405	50	42,0
358242330200	500	8	505	46	72,0
358242340400	500	11	505	72	72,0
358242370000	630	11	635	72	105,0
358242380100	630	15	635	60	105,0
358242410000	800	11	385	50	130,0
358242420100	800	15	408	55	130,0