

1

2

3

4

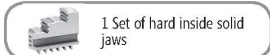
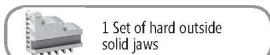
5

6

Type 3564



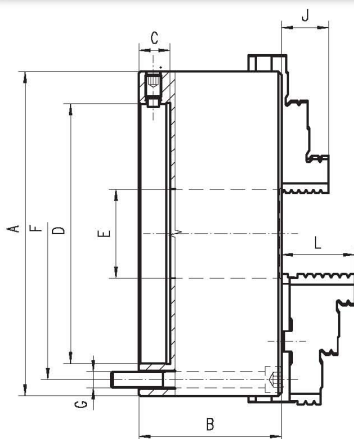
Standard accessories



Spare parts see pages 80-93

Technical data see pages 94-98

Code No.	Type	A	B	C	D	E	F	Q	G	J	kg
353564020000	3564-100	100	68,0	13	45,000	20	83,0	3	M8	17	3,3
353564030200	3564-125	125	71,5	15	55,000	35	108,0	3	M8	20	5,0
353564040400	3564-160	160	68,6	18	86,000	42	140,0	3	M10	32	9,1
353564050600	3564-200	200	78,0	20	110,000	55	176,0	3	M10	29	15,5
353564060800	3564-250	250	89,0	20	145,000	76	224,0	3	M12	34	26,2
353564070000	3564-315	315	96,2	20	180,000	103	286,0	3	M16	43	46,5
353564080100	3564-400	400	123,0	22	299,237	136	171,5	6	M16	55	90,0
353564090300	3564-500	500	144,0	30	407,160	190	235,0	6	M20	60	171,0
353564100800	3564-630	630	150,0	30	407,160	252	330,2	6	M20	70	302,0
353564200900	3564-800	800	156,0	34	635,000	320	368,3	6	M24	70	550,0
353564211300	3564-1000	1000	185,0	34	635,000	408	463,6	6	M24	88	750,0



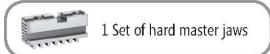
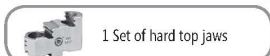
- Steel body material provides higher rigidity and wear resistance, enabling the chuck to withstand higher machining forces
- Hardened and ground working surfaces prolong life while ensuring continuous accuracy and repeatability
- Balanced scroll plate allows higher rotation speeds without excess vibration
- Repeatability: 0,015 mm
- Superior accuracy: small screws on the outside enable the chuck to be adjusted to position with nearly zero run-out (adjusting accuracy within 0,005 mm)
- The clamped workpiece is adjusted to the required concentricity by means of 4 (8 for sizes 400 mm, 500 mm, 630 mm) radially arranged adjusting screws
- This precision chuck with increased gripping accuracy is made for universal use, but particularly advantageous for grinding machines, indexing heads and lathes
- Mounted on the machine tool spindle from the back of the chuck by using an adapter plate

Q - Number of mounting screws

Type 3565



Standard accessories



Spare parts see pages 80-93

Technical data see pages 94-98

Code No.	Type	A	B	C	D	E	F	Q	G	L	kg
353565030000	3565-125	125	71,5	15	55,000	35	108,0	3	M8	40,0	5,0
353565040200	3565-160	160	68,6	18	86,000	42	140,0	3	M10	43,0	9,1
353565050400	3565-200	200	78,0	20	110,000	55	176,0	3	M10	45,0	15,5
353565060600	3565-250	250	89,0	20	145,000	76	224,0	3	M12	53,0	26,2
353565070800	3565-315	315	96,2	20	180,000	103	286,0	3	M16	57,0	46,5
353565080000	3565-400	400	123,0	22	299,237	136	171,5	6	M16	67,0	90,0
353565090100	3565-500	500	144,0	30	407,160	190	235,0	6	M20	79,0	171,0
353565100600	3565-630	630	150,0	30	407,160	252	330,2	6	M20	87,0	302,0
353565200700	3565-800	800	156,0	34	635,000	320	368,3	6	M24	87,0	550,0
353565211100	3565-1000	1000	185,0	34	635,000	408	463,6	6	M24	99,5	750,0