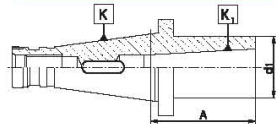


1  
2  
3  
4  
5  
6  
  
1679  
1699  
2824  
1679 QC  
2190  
5370

### Type 1679

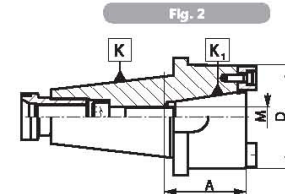
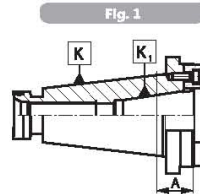


■ Reducing adapters for tools with Morse taper and tang DIN 228-B shank or for tools with Morse taper shank and drawbar thread DIN 228-A

Code No.	K 7:24	K1 MT	A	d1	Fig.
80000177	30	1	50	25	1
80000178	30	2*	50	32	1
80000179	30	3*	72	40	1
80000180	40	1	50	25	1
80000181	40	1	92	25	2
80000182	40	2	50	32	1
80000183	40	2	109	32	2
80000184	40	3*	65	40	1
80000185	40	3*	129	40	2
80000186	40	4*	95	48	1
80000187	40	4*	152	48	2
80000188	50	1	45	25	1
80000189	50	1	96	25	2
80000190	50	2	60	32	1
80000191	50	2	113	32	2
80000192	50	3	65	40	1
80000193	50	3	133	40	2
80000194	50	4	70	48	1
80000195	50	4	163	48	2
80000196	50	5*	105	63	1
80000197	50	5*	193	63	2

### Type 1699

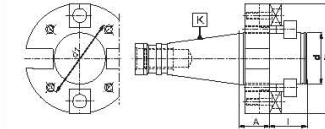
■ Taper adapters for tools with 7:24 taper shank



Code No.	K 7:24	K1 7:24	A	Fig.	D	M
800000285	50	40	27	1	88	M16
800000286	50	40	65	2	88	M16

### Type 2824

■ Adapters for indexable milling cutters

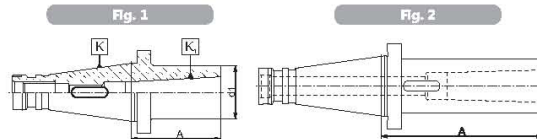


Code No.	K 7:24	d	d1	d2	A	l	U-6064/0	U-1414/0
80000590	40	40	66	89	30	30	U-6064/0	U-1414/0
80000591	40	50	101	129	30	40	U-6065/0	U-2042/0
80000592	40	60	101	129	30	40	U-6066/0	U-2042/0
80000593	50	40	66	89	30	30	U-6064/0	U-1414/0
80000594	50	50	101	129	30	40	U-6065/0	U-2042/0
80000595	50	60	101	129	30	40	U-6066/0	U-2042/0

### Type 1679 QC



■ Quick Change  
■ Reducing adapters for tools with Morse taper and tang DIN 228-B shank or for tools with Morse taper shank and drawbar thread DIN 228-A

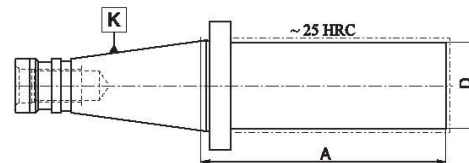


Code No.	K 7:24	K1 MT	A	D	Fig.
80000198	30	1	50	25	1
80000199	30	2*	50	32	1
80000200	30	3*	72	40	1
80000201	40	1	50	25	1
80000202	40	1	92	25	2
80000203	40	2	50	32	1
80000204	40	2	109	32	2
80000205	40	3*	65	40	1
80000206	40	3*	129	40	2
80000207	40	4*	95	48	1
80000208	40	4*	160	48	2

\*only for tools with Morse taper and tang DIN 228-B shank

### Type 2190

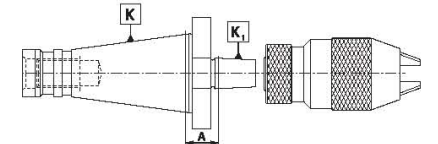
■ Blank adapters



Code No.	K 7:24	D	A
80000551	40	40	280
80000554	40	63	280
80000556	50	50	330
80000558	50	80	330

### Type 5370

■ Drill chuck adapters for drill chucks with DIN 238 taper



Code No.	K 7:24	K1 DIN	A
80000849	30	B10	15
80000850	30	B12	15
80000851	30	B16	15
80000852	30	B18	15
80000853	30	B22	15
80000854	40	B12	17
80000855	40	B12	90
80000856	40	B16	17
80000857	40	B16	90
80000858	40	B18	17
80000859	40	B18	90
80000860	40	B22	17
80000861	40	B24	17
80000862	50	B16	20
80000863	50	B16	90
80000864	50	B18	20
80000865	50	B18	90
80000866	50	B22	20
80000867	50	B24	20