

| Artikel Nr. Code No. | K 7:24 | d | d ₁ | A | Abb. Fig. | | |
|-------------------------|-----------|----|----------------|-----|--------------|--------------|----------|
| 800002369 | 40 | 6 | 25 | 50 | 1 | U-4131/0 | U-1599/0 |
| 800002370 | 40 | 8 | 28 | 50 | 1 | U-4132/0 | U-6317/0 |
| 800002371 | 40 | 10 | 35 | 63 | 1 | U-4133/0 | U-0293/0 |
| 800002372 | 40 | 12 | 42 | 63 | 1 | U-4134/0 | U-0757/0 |
| 800002373 | 40 | 14 | 44 | 63 | 1 | U-4135/0 | U-6318/0 |
| 800002374 | 40 | 16 | 48 | 63 | 1 | U-4135/0 | U-6318/0 |
| 800002375 | 40 | 18 | 50 | 63 | 1 | U-4136/0 | U-6793/0 |
| 800002376 | 40 | 20 | 52 | 63 | 1 | U-4136/0 | U-6793/0 |
| 800002377 | 40 | 25 | 65 | 90 | 2 | 2 x U-4137/0 | U-6794/0 |
| 800002378 | 40 | 32 | 72 | 100 | 2 | 2 x U-4138/0 | U-6794/0 |
| 800002379 | 50 | 6 | 25 | 63 | 1 | U-4131/0 | U-1599/0 |
| 800002380 | 50 | 8 | 28 | 63 | 1 | U-4132/0 | U-6317/0 |
| 800002381 | 50 | 10 | 35 | 65 | 1 | U-4133/0 | U-0293/0 |
| 800002382 | 50 | 12 | 42 | 80 | 1 | U-4134/0 | U-0757/0 |
| 800002383 | 50 | 14 | 44 | 80 | 1 | U-4135/0 | U-6318/0 |
| 800002384 | 50 | 16 | 48 | 80 | 1 | U-4135/0 | U-6318/0 |
| 800002385 | 50 | 18 | 50 | 80 | 1 | U-4136/0 | U-6793/0 |
| 800002386 | 50 | 20 | 52 | 80 | 1 | U-4136/0 | U-6793/0 |
| 800002387 | 50 | 25 | 65 | 100 | 2 | 2 x U-4137/0 | U-6794/0 |
| 800002388 | 50 | 32 | 72 | 105 | 2 | 2 x U-4138/0 | U-6794/0 |
| 800002389 | 50 | 40 | 90 | 120 | 2 | 2 x U-5870/0 | U-6794/0 |

7629

- Whistle-Notch Aufnahme für Werkzeuge mit Zylinderschaft und geneigter Spannfläche nach DIN 1835-E
- End mill holder for Whistle-Notch type end mills DIN 1835-E

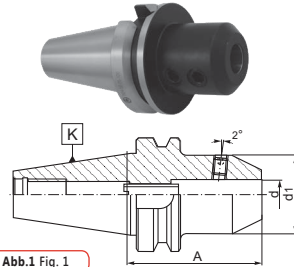


Abb.1 Fig. 1

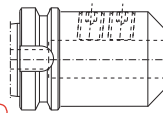
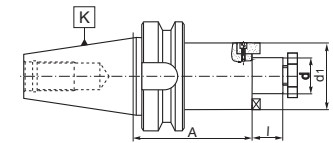


Abb. 2 Fig. 2

| Artikel Nr. Code No. | K 7:24 | d | A | l | d ₁ | | |
|-------------------------|-----------|----|-----|----|----------------|----------|----------|
| 800001612 | 30 | 16 | 43 | 17 | 32 | U-0620/0 | S-2117/0 |
| 800001613 | 30 | 22 | 43 | 19 | 40 | U-0621/0 | S-2121/0 |
| 800001614 | 30 | 27 | 43 | 21 | 48 | U-0622/0 | S-2111/0 |
| 800001615 | 30 | 32 | 45 | 24 | 58 | U-0623/0 | S-2114/0 |
| 800001616 | 40 | 16 | 52 | 17 | 32 | U-0620/0 | S-2117/0 |
| 800001617 | 40 | 16 | 120 | 17 | 32 | U-0620/0 | S-2117/0 |
| 800001618 | 40 | 22 | 52 | 19 | 40 | U-0621/0 | S-2121/0 |
| 800001619 | 40 | 22 | 120 | 19 | 40 | U-0621/0 | S-2121/0 |
| 800001620 | 40 | 27 | 52 | 21 | 48 | U-0622/0 | S-2111/0 |
| 800001621 | 40 | 27 | 120 | 21 | 48 | U-0622/0 | S-2111/0 |
| 800001622 | 40 | 32 | 52 | 24 | 58 | U-0623/0 | S-2114/0 |
| 800001623 | 40 | 32 | 120 | 24 | 58 | U-0623/0 | S-2114/0 |
| 800001624 | 40 | 40 | 60 | 27 | 70 | U-0624/0 | S-2124/0 |
| 800001625 | 50 | 16 | 65 | 17 | 32 | U-0620/0 | S-2117/0 |
| 800001626 | 50 | 16 | 110 | 17 | 32 | U-0620/0 | S-2117/0 |
| 800001627 | 50 | 22 | 65 | 19 | 40 | U-0621/0 | S-2121/0 |
| 800001628 | 50 | 22 | 110 | 19 | 40 | U-0621/0 | S-2121/0 |
| 800001629 | 50 | 27 | 65 | 21 | 48 | U-0622/0 | S-2111/0 |
| 800001630 | 50 | 27 | 110 | 21 | 48 | U-0622/0 | S-2111/0 |
| 800001631 | 50 | 32 | 65 | 24 | 58 | U-0623/0 | S-2114/0 |
| 800001632 | 50 | 32 | 110 | 24 | 58 | U-0623/0 | S-2114/0 |
| 800001633 | 50 | 40 | 78 | 27 | 70 | U-0624/0 | S-2124/0 |
| 800001634 | 50 | 40 | 110 | 27 | 70 | U-0624/0 | S-2124/0 |
| 800001635 | 50 | 50 | 78 | 30 | 90 | U-0625/0 | U-5974/0 |

7388

- Messerkopfaufnahme zur Aufnahme von Fräsern nach DIN 138
- Shell mill holders



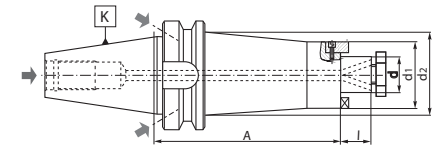
| Artikel Nr. Code No. | K 7:24 | d | A | l | d ₁ | d ₂ | | |
|-------------------------|-----------|----|-----|----|----------------|----------------|----------|----------|
| 800001636 | 40 | 16 | 45 | 17 | 38 | - | U-0620/0 | W-1945/0 |
| 800001637 | 40 | 16 | 100 | 17 | 38 | 50 | U-0620/0 | W-1945/0 |
| 800001638 | 40 | 16 | 130 | 17 | 38 | 50 | U-0620/0 | W-1945/0 |
| 800001639 | 40 | 16 | 160 | 17 | 38 | 50 | U-0620/0 | W-1945/0 |
| 800001640 | 40 | 22 | 45 | 19 | 48 | - | U-0621/0 | W-1946/0 |
| 800001641 | 40 | 22 | 100 | 19 | 48 | - | U-0621/0 | W-1946/0 |
| 800001642 | 40 | 22 | 130 | 19 | 48 | - | U-0621/0 | W-1946/0 |
| 800001643 | 40 | 22 | 160 | 19 | 48 | - | U-0621/0 | W-1946/0 |
| 800001644 | 40 | 27 | 50 | 21 | 58 | - | U-0622/0 | W-1947/0 |
| 800001645 | 40 | 27 | 100 | 21 | 58 | - | U-0622/0 | W-1947/0 |
| 800001646 | 40 | 27 | 130 | 21 | 58 | - | U-0622/0 | W-1947/0 |
| 800001647 | 40 | 27 | 160 | 21 | 58 | - | U-0622/0 | W-1947/0 |
| 800001648 | 40 | 32 | 55 | 24 | 66 | - | U-0623/0 | W-1948/0 |
| 800001649 | 40 | 32 | 100 | 24 | 66 | - | U-0623/0 | W-1948/0 |
| 800001650 | 40 | 32 | 130 | 24 | 66 | - | U-0623/0 | W-1948/0 |
| 800001651 | 40 | 32 | 160 | 24 | 66 | - | U-0623/0 | W-1948/0 |
| 800001652 | 40 | 40 | 60 | 27 | 80 | - | U-0624/0 | W-1949/0 |
| 800001653 | 40 | 40 | 100 | 27 | 80 | - | U-0624/0 | W-1949/0 |
| 800001654 | 40 | 40 | 130 | 27 | 80 | - | U-0624/0 | W-1949/0 |
| 800001655 | 40 | 40 | 160 | 27 | 80 | - | U-0624/0 | W-1949/0 |
| 800001656 | 50 | 16 | 55 | 17 | 38 | - | U-0620/0 | W-1945/0 |
| 800001657 | 50 | 16 | 100 | 17 | 38 | 50 | U-0620/0 | W-1945/0 |

| Artikel Nr. Code No. | K 7:24 | d | A | l | d ₁ | d ₂ | | |
|-------------------------|-----------|----|-----|----|----------------|----------------|----------|----------|
| 800001658 | 50 | 16 | 130 | 17 | 38 | 50 | U-0620/0 | W-1945/0 |
| 800001659 | 50 | 16 | 160 | 17 | 38 | 50 | U-0620/0 | W-1945/0 |
| 800001660 | 50 | 16 | 200 | 17 | 38 | 50 | U-0620/0 | W-1945/0 |
| 800001661 | 50 | 22 | 55 | 19 | 48 | - | U-0621/0 | W-1946/0 |
| 800001662 | 50 | 22 | 100 | 19 | 48 | 62 | U-0621/0 | W-1946/0 |
| 800001663 | 50 | 22 | 130 | 19 | 48 | 62 | U-0621/0 | W-1946/0 |
| 800001664 | 50 | 22 | 160 | 19 | 48 | 62 | U-0621/0 | W-1946/0 |
| 800001665 | 50 | 22 | 200 | 19 | 58 | 62 | U-0621/0 | W-1947/0 |
| 800001666 | 50 | 27 | 60 | 21 | 58 | - | U-0622/0 | W-1947/0 |
| 800001667 | 50 | 27 | 100 | 21 | 58 | 76 | U-0622/0 | W-1947/0 |
| 800001668 | 50 | 27 | 130 | 21 | 58 | 76 | U-0622/0 | W-1947/0 |
| 800001669 | 50 | 27 | 160 | 21 | 58 | 76 | U-0622/0 | W-1947/0 |
| 800001670 | 50 | 27 | 200 | 21 | 58 | 76 | U-0622/0 | W-1947/0 |
| 800001671 | 50 | 32 | 65 | 24 | 66 | - | U-0623/0 | W-1948/0 |
| 800001672 | 50 | 32 | 100 | 24 | 66 | 80 | U-0623/0 | W-1948/0 |
| 800001673 | 50 | 32 | 130 | 24 | 66 | 80 | U-0623/0 | W-1948/0 |
| 800001674 | 50 | 32 | 160 | 24 | 66 | 80 | U-0623/0 | W-1948/0 |
| 800001675 | 50 | 32 | 200 | 24 | 66 | 80 | U-0623/0 | W-1948/0 |
| 800001676 | 50 | 40 | 70 | 27 | 80 | - | U-0624/0 | W-1949/0 |
| 800001677 | 50 | 40 | 100 | 27 | 80 | - | U-0624/0 | W-1949/0 |
| 800001678 | 50 | 40 | 130 | 27 | 80 | - | U-0624/0 | W-1949/0 |
| 800001679 | 50 | 40 | 160 | 27 | 80 | - | U-0624/0 | W-1949/0 |



7388 AD+B

- Messerkopfaufnahme zur Aufnahme von Fräsern nach DIN 138
- Shell mill holders



| Artikel Nr. Code No. | K 7:24 | d | A | l | d ₁ | d ₂ | | |
|-------------------------|-----------|----|-----|----|----------------|----------------|----------|----------|
| 800001680 | 50 | 40 | 200 | 27 | 80 | - | U-0624/0 | W-1949/0 |
| 800001681 | 50 | 50 | 70 | 30 | 90 | - | U-0625/0 | U-5974/0 |
| 800001682 | 50 | 50 | 100 | 30 | 90 | - | U-0625/0 | U-5974/0 |
| 800001683 | 50 | 50 | 130 | 30 | 90 | - | U-0625/0 | U-5974/0 |
| 800001684 | 50 | 50 | 160 | 30 | 90 | - | U-0625/0 | U-5974/0 |
| 800001685 | 50 | 50 | 200 | 30 | 90 | - | U-0625/0 | U-5974/0 |