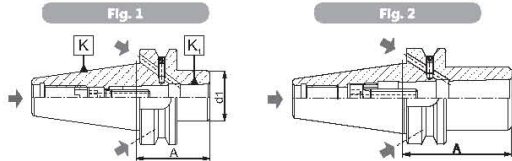


1
2
3
4
5
6

Type 1694 AD+B

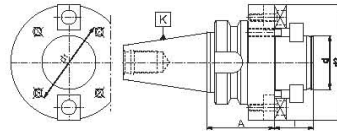
■ Reducing adapters for tools with Morse taper shank and drawbar thread DIN 228-A



Code No.	K 7:24	K1 MT	A	d1	Fig.	Image
800000259	40	2	50	32	1	W-1092/0
800000260	40	3	70	40	2	W-1093/0
800000261	40	4	95	48	2	W-1094/0
800000262	50	2	60	32	1	W-1095/0
800000263	50	3	65	40	1	W-1096/0
800000264	50	4	95	48	1	W-1097/0
800000265	50	5	120	63	2	W-1098/0

Type 2826

■ Adapters for indexable milling cutters

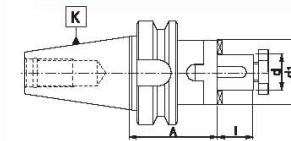


Code No.	K 7:24	d	d1	d2	A	l	Image
800000596	40	40	66,7	89	60	30	U-6064/0 U-1414/0
800000597	40	60	101,6	129	60	40	U-6066/0 U-2042/0
800000598	50	40	66,7	89	70	30	U-6064/0 U-1414/0
800000599	50	60	101,6	129	80	40	U-6066/0 U-2042/0

Type 7361



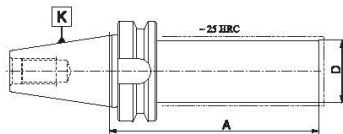
■ Combination shell mill adapters for cutters with keyway or driving slot DIN 138



Code No.	K 7:24	d	A	l	d1	Image
800001495	40	16	55	17	32	U-0620/0 U-1364/0 U-1355/0
800001496	40	22	55	19	40	U-0621/0 U-1365/0 U-1356/0
800001497	40	27	55	21	48	U-0622/0 U-1366/0 U-1357/0
800001498	40	32	60	24	58	U-0623/0 U-1367/0 U-6355/0
800001499	40	40	60	27	70	U-0624/0 U-1368/0 U-1359/0
800001500	50	16	70	17	32	U-0620/0 U-1364/0 U-1355/0
800001501	50	22	70	19	40	U-0621/0 U-1365/0 U-1356/0
800001502	50	27	70	21	48	U-0622/0 U-1366/0 U-1357/0
800001503	50	32	70	24	58	U-0623/0 U-1367/0 U-6355/0
800001504	50	40	70	27	70	U-0624/0 U-1368/0 U-1359/0
800001505	50	50	70	30	90	U-0625/0 U-1369/0 U-1360/0

Type 2192

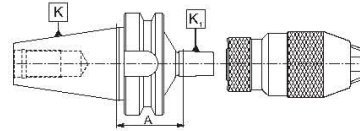
■ Blank adapters



Code No.	K 7:24	D	A
800000579	40	40	280
800000582	40	63	280
800000584	50	50	330
800000585	50	80	330

Type 5373

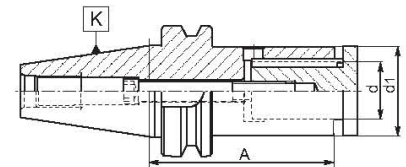
■ Drill chuck adapters for drill chucks taper DIN 238 or Jacobs taper



Code No.	K 7:24	K1 DIN/Jacobs	A
800000868	30	B12	30
800000869	30	B16	30
800000870	40	B12	40
800000871	40	B12	90
800000872	40	B16	42
800000873	40	B16	90
800000874	40	B18	42
800000875	40	B18	90
800000876	40	B16	45
800000877	40	B16	90
800000878	40	B18	45
800000879	40	B18	90
800003391	30	J6	30
800003392	40	J33	42
800003393	40	J6	42
800003394	40	J33	45
800003395	40	J6	45

Type 7372

■ Milling arbors for staggered tooth side milling cutters



Code No.	K 7:24	d	d1	A	Image
800001530	40	16	29	95	U-6520/0 U-6510/0 U-6526/0
800001531	40	16	29	125	U-6520/0 U-6511/0 U-6527/0
800001532	40	22	36	95	U-6523/0 U-6512/0 U-6528/0
800001533	40	22	36	125	U-6523/0 U-6513/0 U-6529/0
800001534	40	27	42	95	U-6523/0 U-6514/0 U-6530/0
800001535	40	27	42	125	U-6523/0 U-6515/0 U-6531/0
800001536	40	32	50	95	U-6523/0 U-6516/0 U-6532/0
800001537	40	32	50	125	U-6523/0 U-6517/0 U-6533/0
800001538	50	22	36	100	U-6524/0 U-6512/0 U-6528/0
800001539	50	22	36	125	U-6524/0 U-6513/0 U-6529/0
800001590	50	27	42	100	U-6524/0 U-6514/0 U-6530/0
800001591	50	27	42	125	U-6524/0 U-6515/0 U-6531/0
800001592	50	32	50	100	U-6524/0 U-6516/0 U-6532/0
800001593	50	32	50	125	U-6524/0 U-6517/0 U-6533/0
800001594	50	40	58	100	U-6524/0 U-6518/0 U-6534/0
800001595	50	40	58	125	U-6524/0 U-6519/0 U-6535/0

1694 AD+B
2826
7361
2192
5373
7372