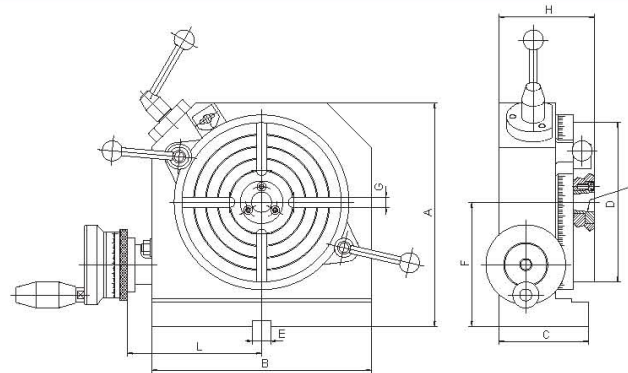


- Due to the three dividing plates, division into the required number of sections is obtained with an accuracy of 1'
- Dividing means of graduated drum with 1'30"
- Parallelism of clamping surface to base 0,02 mm
- Flatness of clamping surface 0,02 mm
- True run-out of tapered centre bore 0,01 mm
- Squareness of clamping surface to angle face 0,02 mm
- Centering Morse taper sleeves are hardened and ground, extending machine life
- Possibility of worm wear compensation and worm disconnection from outside of the body
- Depending on the size gear ratio is 1:60, 1:90, 1:120
- High stiffness
- Three dividing plates with clamping bolts
- Slot nuts
- Table lever



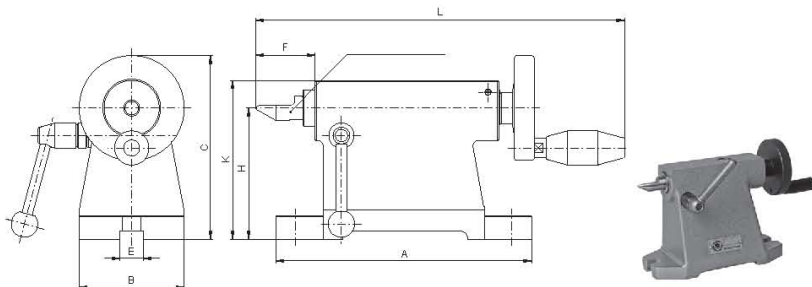
Type 5859



Code No.	Type	Worm ratio	A	B	C	D	E	F	G	H	L	Morse taper	Weight [kg]	Adapters	Chucks	Tailstocks		Permissible weight of workpieces [daN]	
																5818	5819	Horizontal	Vertical
375859010100	5859-160	1:60	225	200	90	160	14	125	4x10	96	127	3	20	160	160	125	95+130	85	40
375859020300	5859-200	1:60	270	240	95	200	14	150	4x10	98	147	3	25	160, 200	160, 200	-	130+170	120	45
375859030500	5859-250	1:90	318	285	115	250	18	175	4x12	115	175	3	55	250	250	-	170+200	160	80
375859040700	5859-320	1:90	374	348	115	320	18	200	4x12	120	207	3	80	315, 250	315, 250	200	170+200	210	110
375859050900	5859-400	1:90	465	430	125	400	18	250	6x14	135	248	4	122	400	400	250	220+250	350	125
375859060000	5859-500	1:120	582	535	170	500	18	315	8x16	175	310	5	260	-	-	-	-	420	200

- This tailstock is designed for use with indexing fixtures, rotary tables and dividing heads

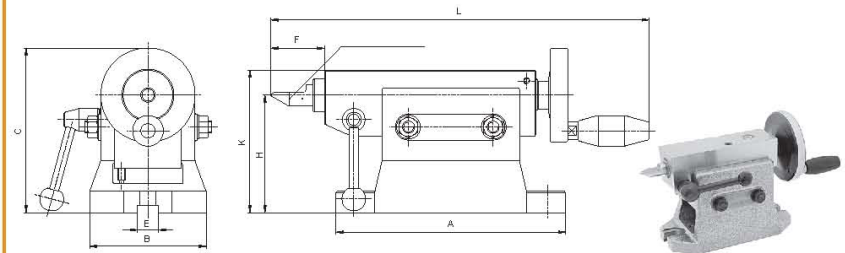
Type 5818



Code No.	Type	A	B	C	E H7	F	H	K	L max	Morse taper	Weight [kg]
375818020600	5818-80	164	68	120	18	26,0-44,0	80	95	244	1	2,5
375818031000	5818-100	195	80	140	18	33,0-63,0	100	121	299	2	6,1
375818040000	5818-125	195	90	178	18	39,0-69,0	125	146	315	2	7,4
375818050100	5818-160	250	115	213	18	48,0-85,0	160	187	366	3	12,7
375818060300	5818-200	275	130	253	18	59,5-99,5	200	233	420	4	17,9
375818070500	5818-250	280	150	303	18	59,5-99,5	250	283	420	4	23,1

- Height (H) is precisely adjusted by means of a screw and, after the adjustment, the spindle is locked in a vertical position
- These tailstocks are designed for use with indexing fixtures, rotary tables and dividing heads

Type 5819



Code No.	Type	A	B	C max	E H7	F		H		K	L	Morse taper	Weight [kg]
						min	max	min	max				
375819020400	5819-95-130	195	100	183	18	40	70	95	130	155	335	2	12,0
375819030600	5819-130-170	250	120	223	18	50	90	130	170	200	409	3	18,8
375819040800	5819-170-200	280	142	253	18	50	90	170	200	230	433	3	25,5
375819045100	5819-200-220	280	142	270	18	50	90	200	220	250	433	3	28,7
375819050000	5819-220-250	300	164	303	18	60	100	220	250	285	465	4	43,0

- 1
- 2
- 3
- 4
- 5
- 6

- 5859
- 5818
- 5819