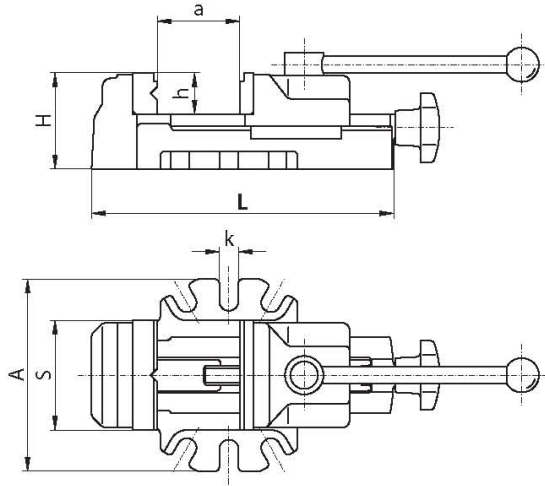


Features:

- To be adjusted within the limits of 90 mm or 100 mm
- The clamping of the workpiece is performed by a single rotary movement of the lever
- The V-block is fastened to the fixed jaw, which enables the clamping of bars
- V-block enables horizontal or vertical clamping of flat or round workpieces
- Cam mechanism is hardened and ground, ensuring longer life with maintained accuracy and repeatability
- Removable jaw inserts are hardened and blackened
- Body and movable jaw are high quality castings

Application:

- Designed for milling and drilling operations, especially for series machining and instant setting of the workpiece



QUICK-ACTING MACHINE VISE

Type 6542



Accessories see pages 152-162

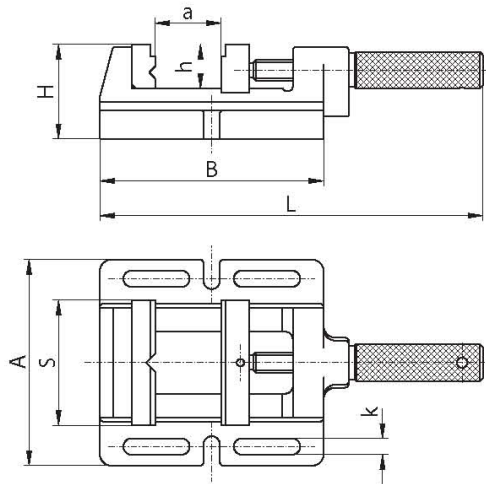
Code No.	Type	S	A	H	L	a max.	h	k	Max. quick grip jaw stroke	Max. clamping force [daN]	kg
326542040600	6542-80	80	140	70	220	80	30	14	4	800	5,2
326542050800	6542-100	100	165	80	270	100	35	14	4	1.200	8,9

Features:

- Vertical and horizontal V-grooves on the fixed jaw insert and recesses of both jaws enable a wide variety of workpieces to be clamped
- Clamping slots and elongated holes enable universal attachment
- Both jaws have a contact surface for clamping flat workpieces
- Body is made of high quality castings

Application:

- Ideal for most drilling and light milling operations



DRILLING MACHINE VISE

Type 6543



Accessories see pages 152-162

Code No.	Type	S	A	B	H	L	a max.	h	k	Max. clamping force [daN]	kg
326543540900	6543-85M	85M	140	152	64	265	70	30	11	400	3,4
326543550000	6543-100M	100M	152	170	64	285	85	30	13,5	500	4,0
326543560200	6543-120M	120M	176	212	64	360	120	30	13,5	650	6,0
326543570400	6543-150M	150M	208	262	66	442	150	38	13,5	800	8,4

- 1
- 2
- 3
- 4
- 5
- 6

- 6542
- 6543