

Features:

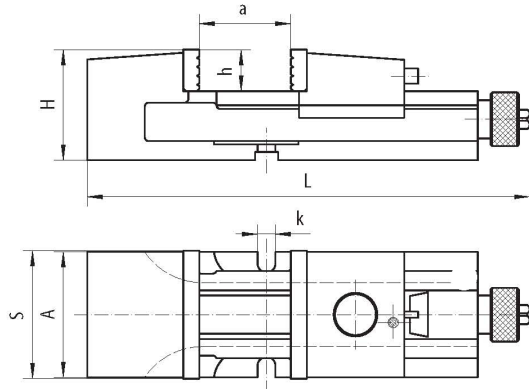
- The movable rear jaw can be placed in different positions through a unique cam locking system, making the rear jaw positioning fast and easy
- Thrust bearing in the power transmission enables easy operation
- Maintains its accuracy while clamping repeatedly
- Removable grooved jaw inserts, one side smooth, the other side grooved, are hardened and ground, ensuring longer life with maintained accuracy and repeatability
- Fully covered lead screw protected against dirt and chips
- Fully ground steel position beam
- Body and rear jaw are high quality castings
- Low, sturdy design

Application:

- Designed for use with milling machines, drill presses, etc.

Standard accessories:

- Hand crank
- Slot nuts



CAMLOCK MACHINE VISE

Type 6517



Code No.	Type	S	A	H	L	a	h	k	Max. clamping force[daN]	kg
326517150800	6517-M100	100	98	85	346	0-125	32	14	1.800	10,6
326517160000	6517-M125	125	122	105	418	0-160	40	14	2.500	20,4
326517170100	6517-M160	160	156	125	524	0-180	50	18	4.200	38,0
326517180300	6517-M200	200	194	150	695	0-280	63	18	6.200	78,0

Corresponding swivel base



Accessories see pages 152-162

Features:

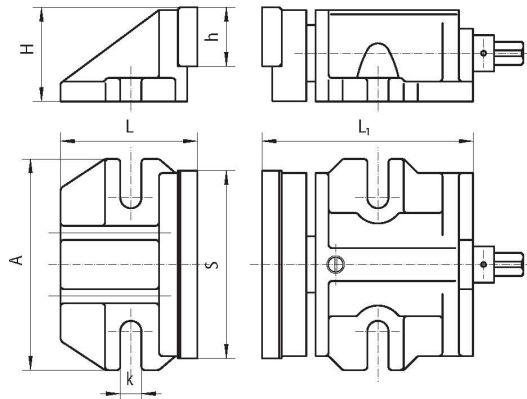
- Facilitates utilization of the full length of the machine bed
- Thrust bearing in the power transmission makes operation easy
- Removable, grooved jaw inserts are hardened and ground, ensuring longer life with maintained accuracy and repeatability
- Workpiece is located directly on the bed for rigidity
- Clamp base body and rigid base are high quality castings

Application:

- Designed for use with milling machines, drill presses, etc. where a large clamping force is required

Standard accessories:

- Hand crank
- Slot nuts



TWO-PIECE MACHINE VISE

Type 6522



Code No.	Type	S	A	H	L	L1	h	k	kg
326522040100	6522-160	160	180	80	160	194	50	17	14,5
326522050300	6522-200	200	196	100	172	258	63	17	26,2

Accessories see pages 152-162

- 1
- 2
- 3
- 4
- 5
- 6

- 6517
- 6522