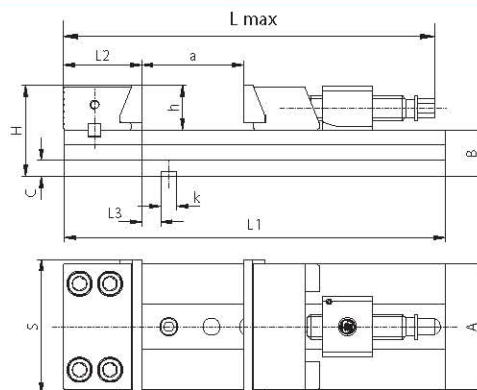
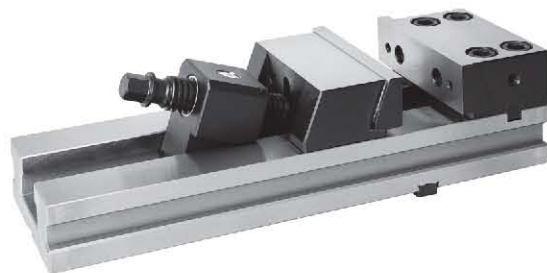


Type 6620



Code No.	Type	S	A	B -0,02	C	H	L max.	L1	L2	L3	a	h	k M6	Max. clamping force [daN]	kg
326620010600	6620-100-320-165	100	85	35	13	65	399	320	61,80	12,00	165	30	12	2.000	9,84
326620030000	6620-125-335-165	125	105	42	15	82	406	335	68,00	18,00	165	40	12	3.000	15,71
326620050300	6620-150-425-210	150	140	52	18	102	515	425	87,29	21,20	210	50	18	4.100	31,95
326620060500	6620-150-475-260	150	140	52	18	102	565	475	87,29	21,20	260	50	18	4.100	35,18
326620070700	6620-150-520-305	150	140	52	18	102	610	520	87,29	21,20	305	50	18	4.100	36,96
326620100500	6620-200-535-260	200	165	61	20	121	623	535	109,43	38,07	260	60	18	4.500	58,95
326620110700	6620-200-585-310	200	165	61	20	121	673	585	109,43	38,07	310	60	18	4.500	61,66
326620120900	6620-200-635-360	200	165	61	20	121	723	635	109,43	38,07	360	60	18	4.500	64,36

Features:

- High positioning repeatability
- Reversible fixed jaw
- Quick re-adjustable, self-adjusting movable jaws
- Can be used with removable jaw inserts
- Possible to set up the vise on a swivel base
- Made of high-grade alloy steel, stabilized and hardened

Application:

- Designed for precision grinding and milling and widely used with CNC and standard machine tools for work in assemblies, on pallets and set up singly

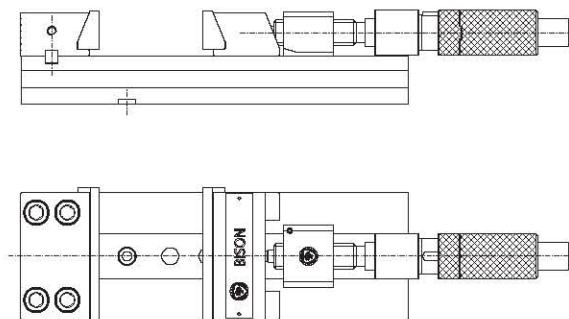
Standard accessories:

- Wrench
- Slot nuts with „k“ dimension - example 12/12 h6
- Vise clamps
- Swinging lead plate

Accessories see pages 152-162

Technical Data see pages 163-164

Type 6621



Code No.	Type	S	A	B -0,02	C	H	L max.	L1	L2	L3	a	h	k M6	Max. clamping force [daN]	kg
326621050100	6621-150-425-210	150	140	52	18	102	726	425	87,29	21,20	210	50	18	4.100	33,4
326621060300	6621-150-475-260	150	140	52	18	102	776	475	87,29	21,20	260	50	18	4.100	36,6
326621070500	6621-150-520-305	150	140	52	18	102	821	520	87,29	21,20	305	50	18	4.100	38,4
326621100300	6621-200-535-260	200	165	61	20	121	857	535	109,43	38,07	260	60	18	4.500	61,5
326621110500	6621-200-585-310	200	165	61	20	121	907	585	109,43	38,07	310	60	18	4.500	64,2
326621120700	6621-200-635-360	200	165	61	20	121	957	635	109,43	38,07	360	60	18	4.500	66,9

Features:

- Vise equipped with hydraulic spindle enabling the application of high clamping force and safe clamping with little effort from the operator
- High positioning repeatability
- Reversible fixed jaw
- Quick re-adjustable, self-adjusting movable jaws
- Can be used with removable jaw inserts
- Possible to set up the vise on a swivel base
- Made of high-grade alloy steel, stabilized and hardened

Application:

- Designed for precision grinding and milling and widely used with CNC and standard machine tools for work in assemblies, on pallets and set up singly
- Vises can also be combined and assembled (only vises from the same group should be used)

Standard accessories:

- Wrench Type 6596
- Slot nuts
- Vise clamps
- Swinging lead plate

Accessories see pages 152-162

Technical Data see pages 163-164