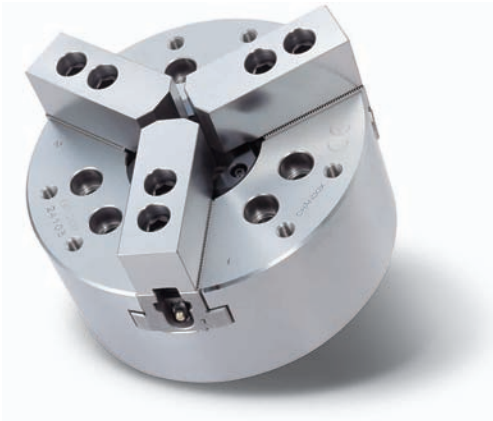
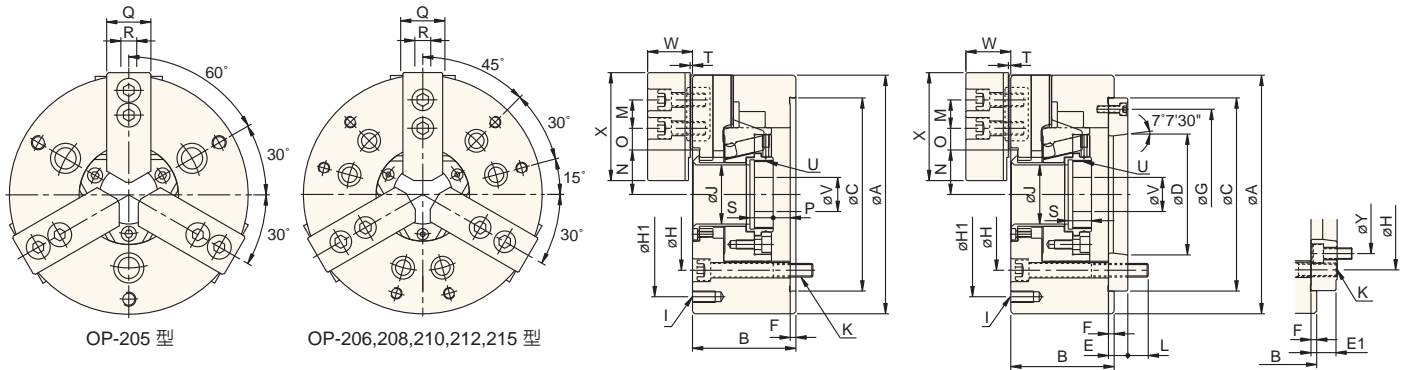


3-JAW HIGH SPEED HOLLOW POWER CHUCKS



■ DIMENSIONS



■ SPECIFICATIONS

UNIT:mm

MODEL / SPEC.	Nose Of Spindle	A	B	C (h6)	D	E	E1	F	G	H	H1	I	J	K	L
OP-205	A ₂ -4	135	60	110	63.513	20	--	4	96	82.6	PCDø118	3-M8x1.25P	33	3-M10x1.5P	15
OP-206	A ₂ -5	169	81	140	82.563	15	--	5	116	104.8	PCDø145	6-M10x1.5P	45	6-M10x1.5P	16
OP-208	A ₂ -6(A ₂ -5)	210	91	170	106.375	17	23	5	150	133.4	PCDø180	6-M10x1.5P	52	6-M12x1.75P	18
OP-210	A ₂ -8(A ₂ -6)	254	100	220	139.719	18	28	5	190	171.4	PCDø225	6-M12x1.75P	75	6-M16x2P	19
OP-212	A ₂ -8	304	110	220	139.719	18	--	6	190	171.4	PCDø250	6-M12x1.75P	91	6-M16x2P	25
OP-215	A ₂ -11(A ₂ -8)	381	133	300	196.869	22	33	6	260	235	PCDø324	6-M12x1.75P	117.5	6-M20x2.5P	28

MODEL / SPEC.	M	N max.	N min.	O max.	O min.	P max.	P min.	Q	R	S	T	U	V	W	X	Y	Thru-Hole [Diameter] (mm)	Plunger Stroke (mm)
OP-205	14	26.5	23.8	19	6	1	-9	25	10	20	2	M40x1.5P	12	31.5	62	--	33	10
OP-206	20	32	29.25	24	7	11	-1	31	12	19	2	M55x2P	20	37	73	--	45	12
OP-208	25	38.7	35	30	10	14.5	-1.5	35	14	20.5	2	M60x2P	30	39	95	104.8	52	16
OP-210	30	51	46.6	34	12	8.5	-10.5	40	16	25	2	M85x2P	40	43	110	133.4	75	19
OP-212	30	61.3	56	46	12	8	-15	50	21	28	2	M100x2P	50	51	129	--	91	23
OP-215	43	82.7	77.4	46	13	8	-15	62	22	42.5	5	M130x2P	60	66	165	171.4	117.5	23

MODEL / SPEC.	Jaw Stroke [Diameter] (mm)	Max.Speed r.p.m.(min ⁻¹)	Max. Pull Force kgf (KN)	Max. Gripping Force kgf (KN)	Max. Hydr. Pressure kgf/cm ² (Mpa)	Weight (kg)	Matching Cylinder	Gripping Range
OP-205	5.4	7000	1730 (17)	3570 (35)	29 (2.8)	6.1	P1036	ø10-ø135
OP-206	5.5	6000	2140 (21)	5710 (56)	28 (2.7)	12.5	P1246	ø13-ø169
OP-208	7.4	4800	3360 (33)	8360 (82)	26 (2.5)	21.9	P1552	ø13-ø210
OP-210	8.8	4200	4280 (42)	11010 (108)	27 (2.6)	33.7	P1875	ø30-ø254
OP-212	10.6	3300	5500 (54)	14380 (141)	27 (2.6)	55.3	P2091	ø35-ø304
OP-215	10.6	2500	7240 (71)	18250 (179)	25 (2.5)	106.8	P2511	ø35-ø381