

**OPEN CENTER  
POWER CHUCKS  
(KHC)**

- KHC 2-3-4 jaws open center power chuck.
- Large through hole, large stroke, high speed.
- Base jaw serration 1,5x60° and 3x60°.
- Mounting ISO-A.
- All moving parts made of alloyed steel, hardened and ground.
- Standard Accessories :
- Mounting bolts and nuts.



DIMENSIONS

Chuck Size	Jaws	Order Code	External	Flange No	Thru-Hole	Jaw Stroke	Shifter Stroke	Clamping Area		Max. Gripping Force	Max. Drawbar Pull	Base Jaw Serrations	Max. Speed	Weight	Max. Workpiece Weight
								Max.	Min.						
6"	2	KH2 A5 6-46	165	A5	46	Ø5.8	13	149	11	32	15	1.5x60°	6000	13	16.4
	3	KH3 A5 6-46								47.5	22.5				
8"	2	KH2 A6 8-52	210	A6	52	Ø7.6	17	189	12	53	18	1.5x60°	5000	23.5	29
	3	KH3 A6 8-52								79	27				
	4	KH4 A6 8-52								79	27				
10"	2	KH2 A8 10-75	254	A8	75	Ø9	20	229	26	72	29	1.5x60°	4000	38.5	49.4
	3	KH3 A8 10-75								108	43				
	4	KH4 A8 10-75								108	43				
12"	2	KH2 A8 12-85B	305	A8	85	Ø9	20	275	40	92	33.5	1.5x60°	3200	70	91.5
	3	KH3 A8 12-85B								138	50				
	4	KH4 A8 12-85B								138	50				
15"	3	KH3 A11 15-120	381	A11	120	Ø11.3	25	343	65	177	69	3x60°	2500	124	174.5
18"	3	KH3 A11 18-120	457	A11	120	Ø11.3	25	412	70	177	69	3x60°	2000	180	251

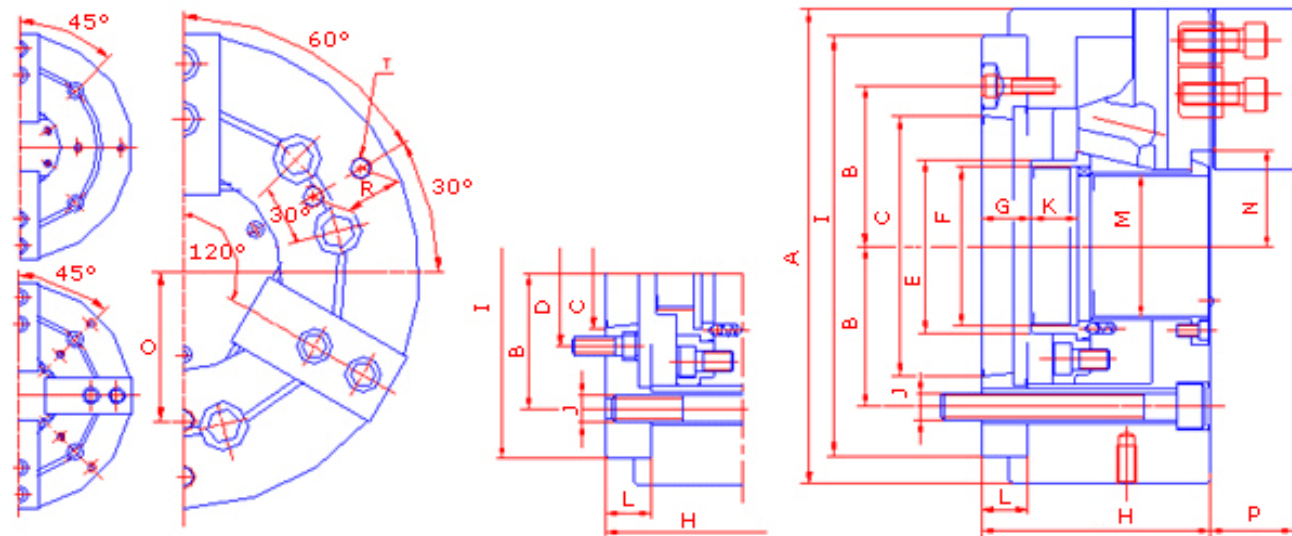
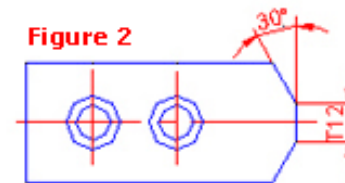
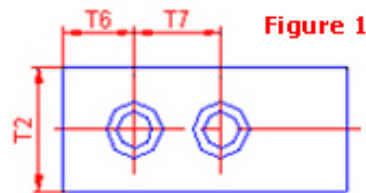
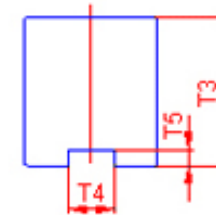
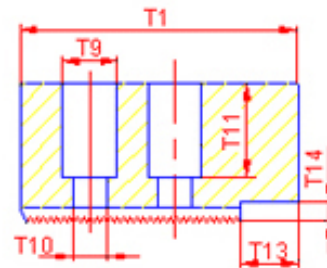
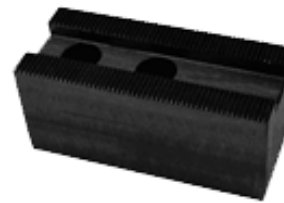


Figure 2

Figure 1

Chuck Size	Fig.	A mm	B mm	C mm	D mm	E mm	F mm	G mm	H mm	I mm	J mm	K mm	L mm	M mm	N mm	O mm	P mm	R mm	T mm
6"	1	165	R 52.4	Ø85.557	-	Ø61	M52x1.5	17 4	90	135	M10	21	22	Ø46	32.5 29.6	45	32	25	M8x15
8"	1	210	R 66.675	Ø106.375	-	Ø66	M60x1.5	18.5 1.5	104	170	M12	25	17.5	Ø52	39.5 35.7	60	42	25	M8x15
10"	1	254	R 85.7	Ø139.72	-	Ø93	M78x1.5	26.5 6.5	123	225	M16	25	25	Ø75	52 47.5	80	44	30	M12x18
12"	2	305	R 95	Ø139.72	Ø171.40	Ø102	M78x1.5	18 -2	135	230	M16	35	27	Ø85	60 55.5	85	54	45	M16x20
15"	1	381	R 117.5	Ø196.87	-	Ø114	M103x2	25 0	165	280	M20	40	35	Ø120	79.5 74	100	65	60	M16x25
18"	1	457	R117.5	Ø196.87	-	Ø140	M130x2	25 0	165	280	M20	40	35	Ø120	79.5 74	120	65	75	M16x25



### Standard

Chuck Size	Order Code	Fig.	Serration	T1	T2	T3	T4	T5	T6	T7	T9	T10	T11	T12	T13	T14
6"	KSJ-06-K1-30	1	1.5x60°	70	30	30	11	5	21	25	14	9	20	-	-	-
8"	KSJ-05-K1-35	1	1.5x60°	79	35	35	14	5	15	25	19	13	20	-	-	-
10"	KSJ-10-K1-40	1	1.5x60°	110	40	40	16	6	30	30	19	13	27	-	-	-
12"	KSJ-12-K2-50	1	1.5x60°	130	50	50	18	6	30	30	23	15	33	-	-	-
15"	KSJ-15-K3-60	1	3x60°	140	60	60	22	8.5	30	50	32	22	41	-	35	9

### High

Chuck Size	Order Code	Fig.	Serration	T1	T2	T3	T4	T5	T6	T7	T9	T10	T11	T12	T13	T14
6"	KSJ-06-K1-40	1	1.5x60°	70	30	40	11	5	21	25	14	9	30	-	-	-
8"	KSJ-08-K1-60	1	1.5x60°	79	35	60	14	5	15	25	19	13	45	-	-	-
8"	KSJ-08-K1-80	1	1.5x60°	79	35	80	14	5	15	25	19	13	65	-	-	-
10"	KSJ-10-K1-60	1	1.5x60°	110	40	60	16	6	30	30	19	13	47	-	-	-

10"	KSJ-10-K1-80	1	1.5x60 °	110	40	80	16	6	30	30	19	13	67	-	-	-
12"	KSJ-12-K1-80	1	1.5x60 °	130	50	80	18	6	30	30	23	15	63	-	-	-
12"	KSJ-12-K1-100	1	1.5x60 °	130	50	100	18	6	30	30	23	15	83	-	-	-

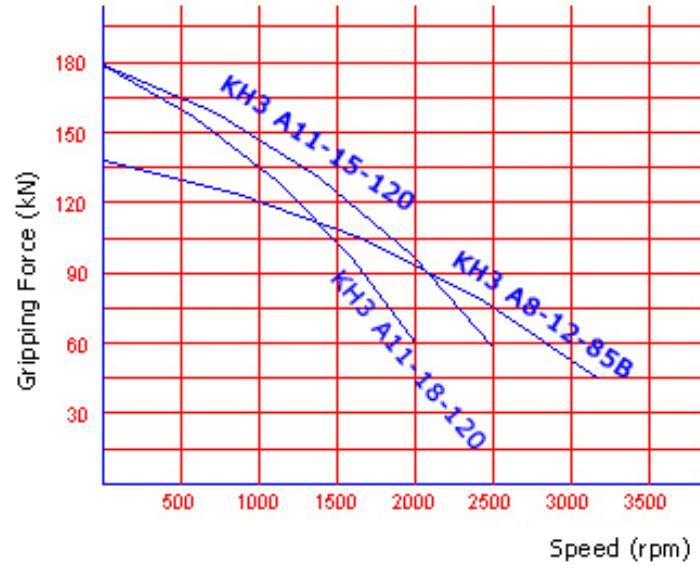
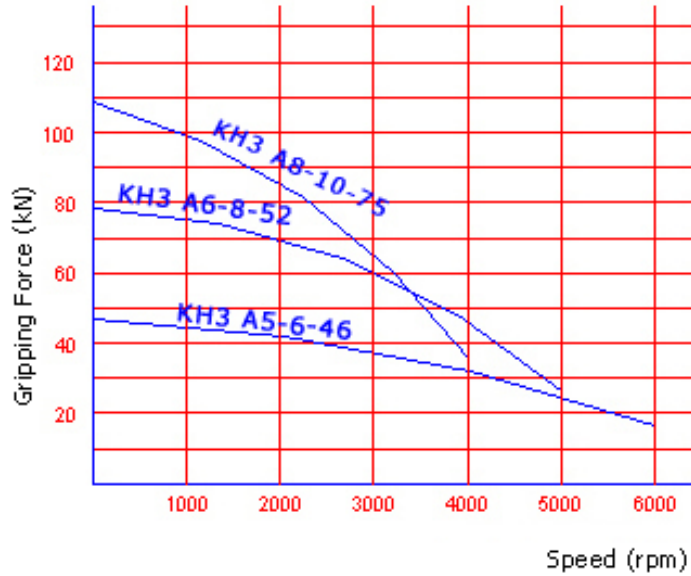
<b>Detail of Serration</b>	1.5x60 °	3x60 °
	K1	K2

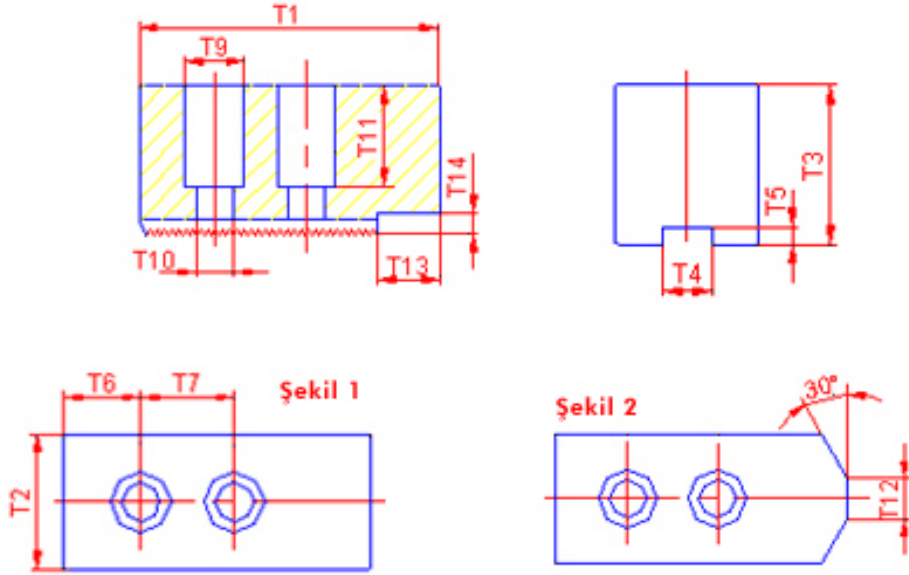
### Standard

Chuck Size	Order Code	Fig.	Serration	T1	T2	T3	T4	T5	T6	T7	T9	T10	T11	T12	T13	T14
6"	KSJ-06-K1-30-2	2	1.5x60 °	70	30	30	11	5	21	25	14	9	20	8	-	-
8"	KSJ-08-K1-35-2	2	1.5x60 °	79	35	35	14	5	15	25	19	13	20	12	-	-
10"	KSJ-10-K1-40-2	2	1.5x60 °	110	40	40	16	6	30	30	19	13	27	15	-	-
12"	KSJ-12-K1-50-2	2	1.5x60 °	130	50	50	18	6	30	30	23	15	33	15	-	-
15"	KSJ-15-K3-60-2	2	3x60 °	140	60	60	22	8.5	30	50	32	22	41	20	35	9

### High

Chuck Size	Order Code	Fig.	Serration	T1	T2	T3	T4	T5	T6	T7	T9	T10	T11	T12	T13	T14
6"	KSJ-06-K1-40-2	2	1.5x60 °	70	30	40	11	5	21	25	14	9	30	8	-	-
8"	KSJ-08-K1-60-2	2	1.5x60 °	79	35	60	14	5	15	25	19	13	45	12	-	-
8"	KSJ-08-K1-80-2	2	1.5x60 °	79	35	80	14	5	15	25	19	13	65	12	-	-
10"	KSJ-10-K1-60-2	2	1.5x60 °	110	40	60	16	6	30	30	19	13	47	15	-	-
10"	KSJ-10-K1-80-2	2	1.5x60 °	110	40	80	16	6	30	30	19	13	67	15	-	-
12"	KSJ-12-K1-80-2	2	1.5x60 °	130	50	80	18	6	30	30	23	15	63	15	-	-
12"	KSJ-12-K1-100-2	2	1.5x60 °	130	50	100	18	6	30	30	23	15	83	15	-	-





### Standard

Chuck Size	Order Code	Fig.	Serration	T1	T2	T3	T4	T5	T6	T7	T9	T10	T11	T12	T13	T14
6"	SK-06-B1-30	2	1.5x60°	72	30	30	12	5	15	20	17	11	20	12	-	-
8"	SK-08-B1-35	2	1.5x60°	95	35	35	14	5	24	25	19	13	20	12	-	-
10"	SK-10-B1-40	2	1.5x60°	110	40	40	16	5	30	30	19	13	27	15	-	-
12"	SK-12-B1-50	2	1.5x60°	129	50	50	18	5	39	30	23	15	30	15	-	-
15"	SK-15-C1-60	1	1.5x60°	165	50	60	22	8	37	43	32	21	40	-	45	9

### High

Chuck Size	Order Code	Fig.	Serration	T1	T2	T3	T4	T5	T6	T7	T9	T10	T11	T12	T13	T14
6"	SK-06-B1-40	1	1.5x60°	72	30	40	12	5	15	20	17	11	30	-	-	-
8"	SK-08-B1-60	1	1.5x60°	95	35	60	14	5	24	25	19	13	45	-	-	-
8"	SK-08-B1-80	1	1.5x60°	95	35	80	14	5	24	25	19	13	65	-	-	-
10"	SK-10-B1-60	1	1.5x60°	110	40	60	16	5	30	30	19	13	47	-	-	-
10"	SK-10-B1-80	1	1.5x60°	110	40	80	16	5	30	30	19	13	67	-	-	-
12"	SK-12-B1-80	1	1.5x60°	129	50	80	18	5	39	30	23	15	60	-	-	-
12"	SK-12-B1-100	1	1.5x60°	129	50	100	18	5	39	30	23	15	80	-	-	-