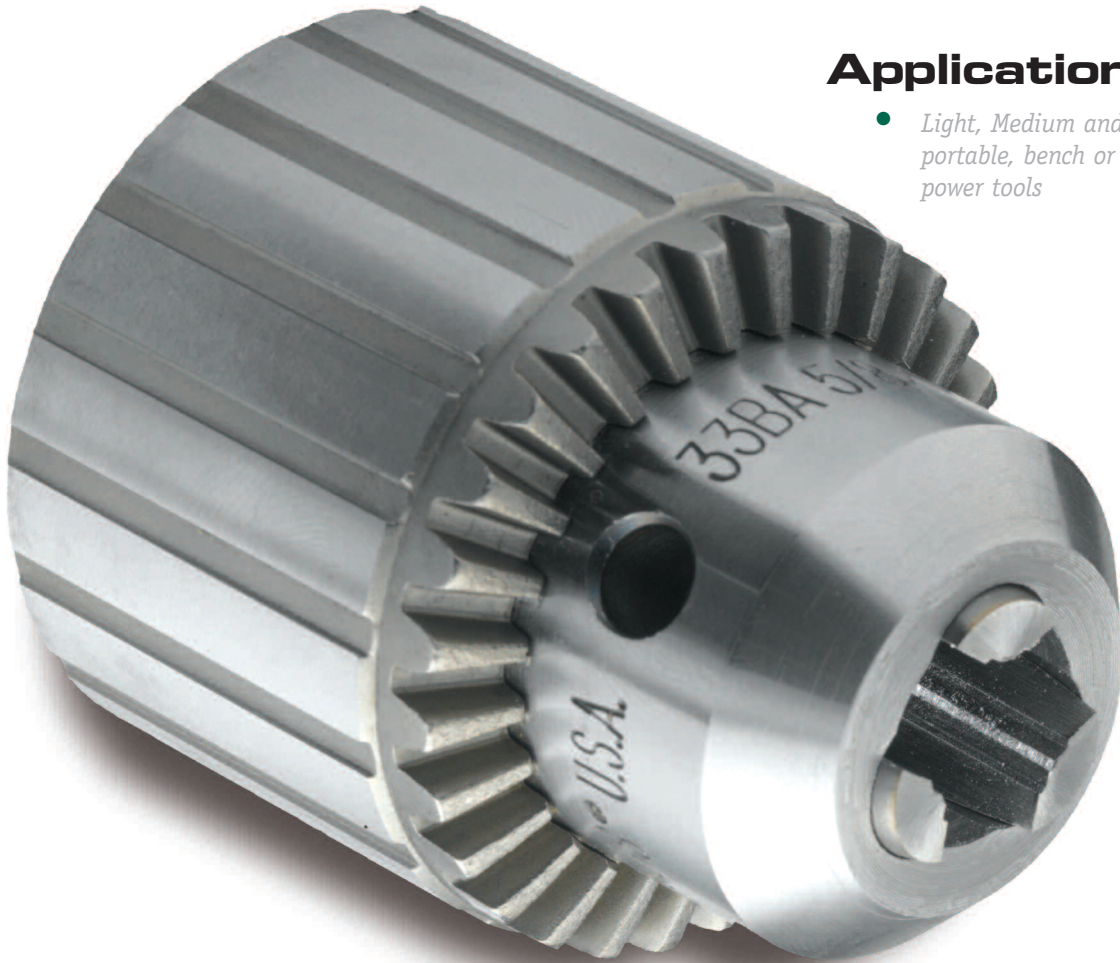


JACOBS

PROFESSIONAL KEYED

DRILL CHUCKS



Application

- *Light, Medium and Heavy-Duty portable, bench or floor mounted power tools*

Features & Benefits

- *Threaded or tapered mounts on Heavy-Duty and Medium-Duty models.*
- *Center-ground jaws provide absolute straightness and alignment.*
- *One piece sleeve design eliminates cracks between driving teeth.*
- *Sleeve teeth, nose piece and keyholes are through-hardened, providing outstanding wear resistance.*

Jacobs[®]
C H U C K

JACOBS PROFESSIONAL KEYED

DRILL CHUCKS Specifications

HEAVY DUTY

Model	Capacity				Dimensions								Hard Pin Grip Torque		Runout	
	Minimum		Maximum		Closed Length		Open Length		Sleeve Diameter							
	in	mm	in	mm	Mount	Key	in	mm	in	mm	in	mm	Ft-lb Out	Nm Out	in	mm
3A	0.125	3.000	0.625	16.000	3JT	K3	3.810	96.800	2.870	72.900	2.300	58.400	20.83	28.25	0.004" @ 1.50"	0.10mm @ 38mm
3KD	0.125	3.000	0.625	16.000	3JT	K3	4.060	103.100	3.120	79.200	2.290	58.200	20.83	28.25	0.004" @ 1.50"	0.10mm @ 38mm
3PD	0.125	3.000	0.625	16.000	3JT	K3	4.060	103.100	3.120	79.200	2.290	58.200	20.83	28.25	0.004" @ 1.50"	0.10mm @ 38mm
34-02	0.040	1.000	0.500	13.000	2JT	K3	3.520	89.400	2.740	69.600	2.040	51.800	18.75	25.43	0.004" @ 1.50"	0.10mm @ 38mm
34-06	0.040	1.000	0.500	13.000	6JT	K3	3.520	89.400	2.740	69.600	2.040	51.800	18.75	25.43	0.004" @ 1.50"	0.10mm @ 38mm
34-33	0.040	1.000	0.500	13.000	33JT	K3	3.520	89.400	2.740	69.600	2.040	51.800	18.75	25.43	0.004" @ 1.50"	0.10mm @ 38mm
34-33C	0.040	1.000	0.500	13.000	33JT	K3C	3.710	94.200	2.930	74.400	2.000	50.800	18.75	25.43	0.004" @ 1.50"	0.10mm @ 38mm
36	0.180	5.000	0.800	20.300	3JT	K4	4.060	103.100	3.140	79.800	2.540	64.500	56.25	76.28	0.004" @ 1.50"	0.10mm @ 38mm
36KD	0.180	5.000	0.800	20.300	3JT	K4	4.250	108.000	3.420	86.900	2.540	64.500	56.25	76.28	0.004" @ 1.50"	0.10mm @ 38mm
36PD	0.180	5.000	0.800	20.300	3JT	K4	4.250	108.000	3.420	86.900	2.540	64.500	56.25	76.28	0.004" @ 1.50"	0.10mm @ 38mm
3B 5/8	0.125	3.000	0.625	16.000	5/8-16	K3	3.810	97.000	2.840	72.000	2.290	58.000	20.83	28.25	0.004" @ 1.50"	0.10mm @ 38mm
7BA 3/8	0 (1)	1.000	0.250	6.500	3/8-24	K7	2.230	57.000	1.740	44.000	1.330	34.000	4.58	6.22	0.004" @ 1.50"	0.10mm @ 38mm
32BA 1/2	0 (1)	1.000	0.375	10.000	1/2-20	K32	3.050	77.000	2.310	59.000	1.790	45.000	12.00	16.27	0.004" @ 1.50"	0.10mm @ 38mm
35B 1/2	0.156	4.000	0.625	16.000	1/2-20	K3	3.520	89.000	2.740	70.000	2.040	52.000	18.75	25.43	0.004" @ 1.50"	0.10mm @ 38mm
36B 3/4	0.188	5.000	0.800	20.300	3/4-16	K4	4.120	105.000	3.200	81.000	2.540	65.000	56.25	76.28	0.004" @ 1.50"	0.10mm @ 38mm
36B 5/8	0.188	5.000	0.800	20.300	5/8-16	K4	4.120	105.000	3.200	81.000	2.540	65.000	56.25	76.28	0.004" @ 1.50"	0.10mm @ 38mm

* 0.004"/0.10mm at half capacity test bar

MEDIUM DUTY

Model	Capacity				Dimensions								Hard Pin Grip Torque		Runout	
	Minimum		Maximum		Closed Length		Open Length		Sleeve Diameter							
	in	mm	in	mm	Mount	Key	in	mm	in	mm	in	mm	Ft-lb Out	Nm Out	in	mm
0	0.0135	0.000	0.156	4.000	0JT	K0	1.450	36.800	1.100	27.900	0.850	21.600	2.00	2.71	0.004" @ 0.75"	0.10mm @ 19mm
1A	0.040	1.000	0.250	6.500	1JT	K1	1.920	48.800	1.540	39.100	1.180	30.000	3.50	4.75	0.004" @ 1.00"	0.10mm @ 25mm
2A	0.040	1.000	0.375	10.000	2JT	K2	2.810	71.400	2.170	55.100	1.670	42.400	10.42	14.13	0.004" @ 1.50"	0.10mm @ 38mm
31-01	0.040	1.000	0.375	10.000	1JT	K30	2.490	63.200	2.010	51.100	1.420	36.100	8.33	11.30	0.004" @ 1.50"	0.10mm @ 38mm
31-02	0.040	1.000	0.375	10.000	2JT	K30	2.490	63.200	2.010	51.100	1.420	36.100	8.33	11.30	0.004" @ 1.50"	0.10mm @ 38mm
33	0.080	2.000	0.500	13.000	33JT	K32	3.210	81.500	2.520	64.000	1.792	45.500	17.50	23.73	0.004" @ 1.50"	0.10mm @ 38mm
3326A	0.080	2.000	0.500	13.000	0.625	K32	3.540	89.900	2.850	72.400	1.792	45.500	17.50	23.73	0.004" @ 1.50"	0.10mm @ 38mm
33KD	0.080	2.000	0.500	13.000	33JT	K32	3.460	87.900	2.770	70.400	1.792	45.500	17.50	23.73	0.004" @ 1.50"	0.10mm @ 38mm
OB 5/16	0.0135	0.000	0.156	4.000	5/16-24	K0	1.530	39.000	1.170	30.000	0.850	22.000	2.00	2.71	0.004" @ 0.75"	0.10mm @ 19mm
1B 3/8	0.040	1.000	0.250	6.500	3/8-24	K1	1.950	50.000	1.570	40.000	1.120	28.000	3.50	4.75	0.004" @ 1.00"	0.10mm @ 25mm
2BA 3/8	0.040	1.000	0.375	10.000	3/8-24	K2	2.810	71.000	2.170	55.000	1.670	42.000	10.42	14.13	0.004" @ 1.50"	0.10mm @ 38mm
41BA 3/8	0.040	1.000	0.375	10.000	3/8-24	K30	2.500	63.500	2.050	52.070	1.430	36.300	10.00	13.56	0.014" @ 3.35"	0.356mm @ 85mm
41BA 3/8S	0.040	1.000	0.375	10.000	3/8-24	K30	2.500	63.500	2.050	52.070	1.430	36.300	10.00	13.56	0.014" @ 3.35"	0.356mm @ 85mm
41BA 1/2	0.040	1.000	0.375	10.000	1/2-20	K30	2.500	63.500	2.050	52.070	1.430	36.300	10.00	13.56	0.014" @ 3.35"	0.356mm @ 85mm
33BA 1/2	0.080	2.000	0.500	13.000	1/2-20	K32	3.090	78.000	2.430	62.000	1.790	45.000	17.50	23.73	0.004" @ 1.50"	0.10mm @ 38mm
33BA 3/8	0.080	2.000	0.500	13.000	3/8-24	K32	3.090	78.000	2.430	62.000	1.790	45.000	17.50	23.73	0.004" @ 1.50"	0.10mm @ 38mm
33BA 5/8	0.080	2.000	0.500	13.000	5/8-16	K32	3.090	78.000	2.430	62.000	1.790	45.000	17.50	23.73	0.004" @ 1.50"	0.10mm @ 38mm

LIGHT DUTY

Model	Capacity				Dimensions								Hard Pin Grip Torque		Runout	
	Minimum		Maximum		Closed Length		Open Length		Sleeve Diameter							
	in	mm	in	mm	Mount	Key	in	mm	in	mm	in	mm	Ft-lb Out	Nm Out	in	mm
22BA 3/8	0.063	1.600	0.375	10	3/8-24	KK	2.420	61.500	1.890	48.00	1.42	36.10	10.00	13.56	0.010" @ 3.35"	0.25mm @ 85mm
24BA 3/8	0.063	1.600	0.500	13	3/8-24	KK	3.000	76.200	2.300	58.40	1.68	42.67	15.00	20.34	0.006" @ 1.50"	0.152mm @ 85mm
26BA 1/2	0.063	1.600	0.500	13	1/2-20	KK	3.000	76.200	2.300	58.40	1.72	43.60	15.00	20.34	0.006" @ 1.50"	0.152mm @ 85mm