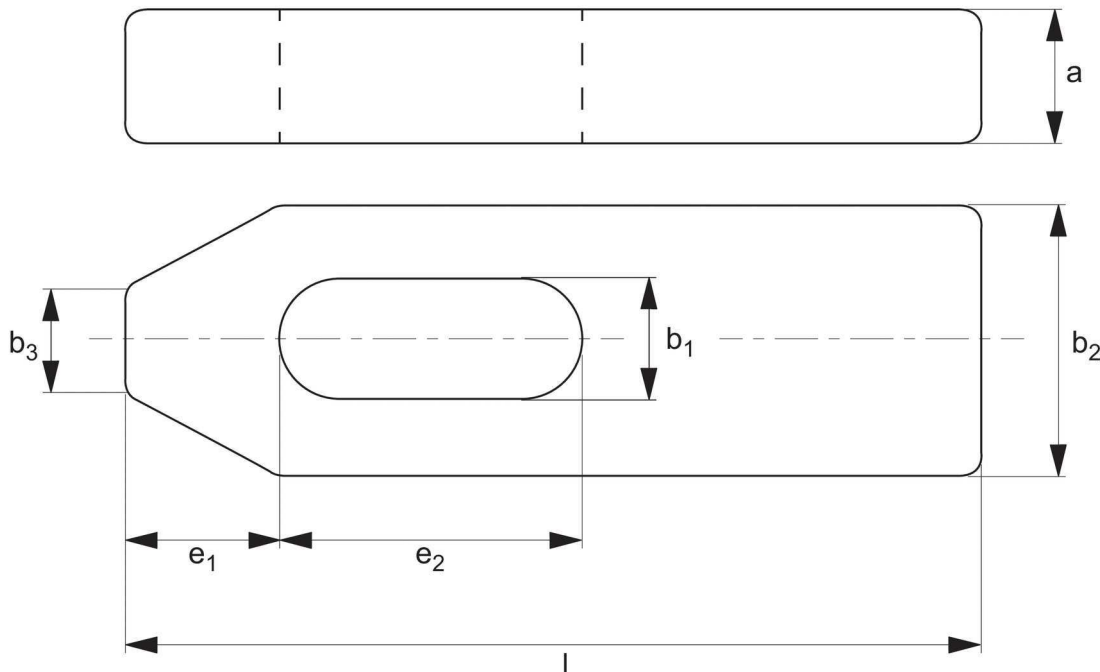


Plain Clamps

DIN 6314



1000



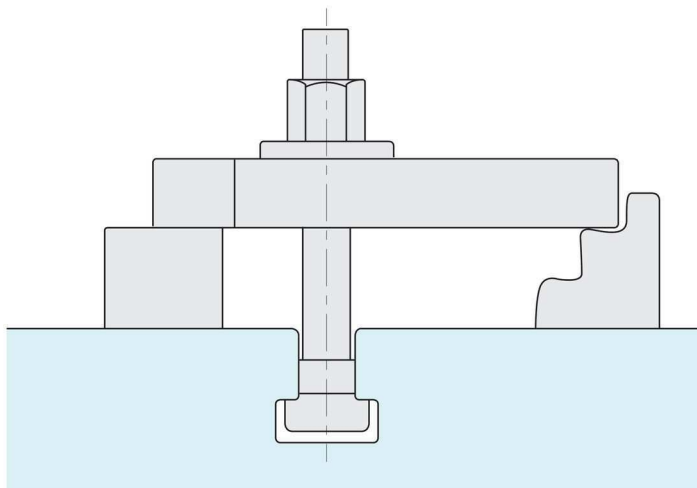
Material

Heat-treated steel, enamelled.

Technical Notes

() = Not to DIN standard.
For T-bolts, washers and nuts see part 2100 to 2430.

Order No.	b ₁	l	For metric thread	For imperial thread	a	b ₂	b ₃	e ₁	e ₂	g
1000.W007	6,6	50	M 6	1/4	10	20	8	10	20	63
1000.W009	9,0	60	M 8	5/16	12	25	10	13	22	113
1000.W011	11,0	80	M10	3/8	15	30	12	15	30	226
1000.W014	14,0	100	M12, M14	1/2	20	40	14	21	40	490
1000.W015	14,0	125	M12, M14	1/2	20	40	14	21	50	621
1000.W018	18,0	125	M16, M18	5/8	25	50	18	26	45	960
1000.W019	18,0	160	M16, M18	5/8	25	50	18	26	65	1240
1000.W022	22,0	160	M20, M22	3/4	30	60	22	30	60	1787
1000.W023	22,0	200	M20, M22	3/4	30	60	22	30	80	2237
1000.W026	26,0	200	M24	1	30	70	26	35	80	2580
1000.W027	26,0	250	M24	1	(35)	70	26	35	105	3800
1000.W034	33,0	250	M30	1-1/4	40	80	34	45	100	4934
1000.W035	33,0	315	M30	1-1/4	50	80	34	45	130	7880
1000.W043	(43,0)	400	M36, M42	1-1/2	60	100	43	100	150	15000

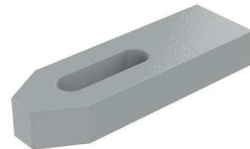


Plain Clamps

DIN 6314



1000



Material

Heat-treated steel, enamelled.

Technical Notes

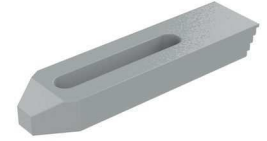
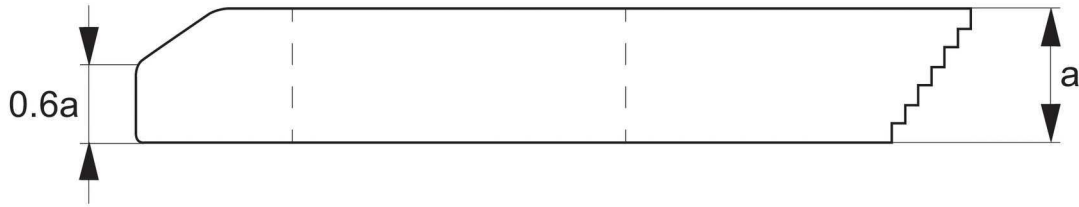
() = Not to DIN standard.

For T-bolts, washers and nuts see part 2100 to 2430.

Step Clamps



1002

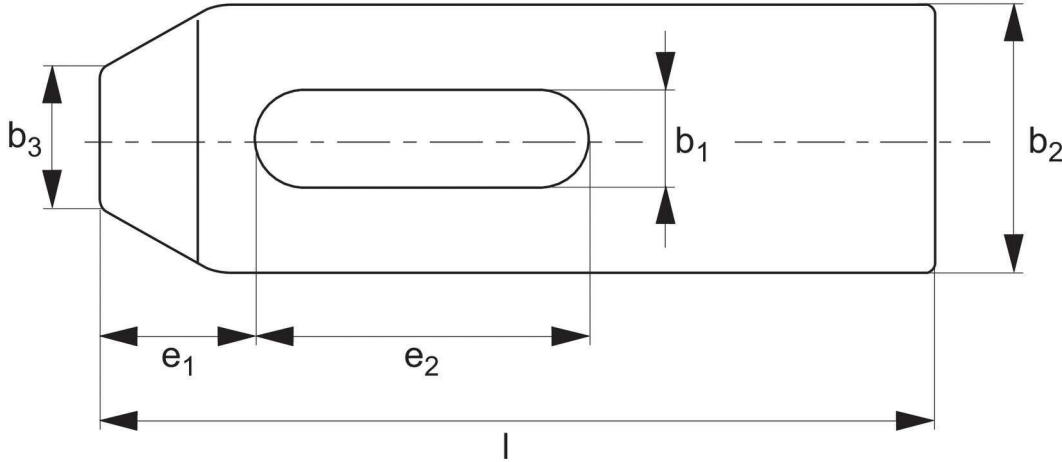





Material

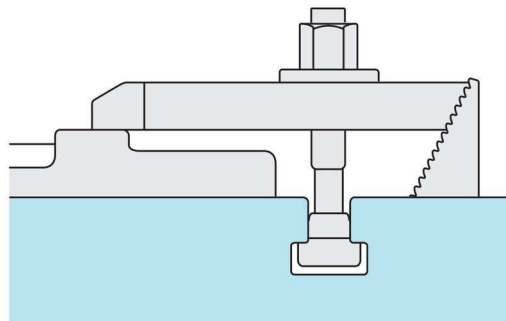
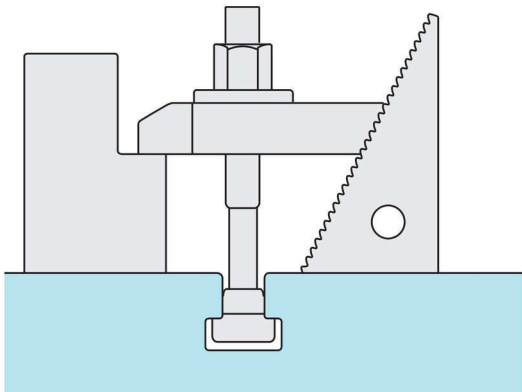
Heat-treated steel, enamelled.

Technical Notes

Only to be used with step blocks no. 1400.



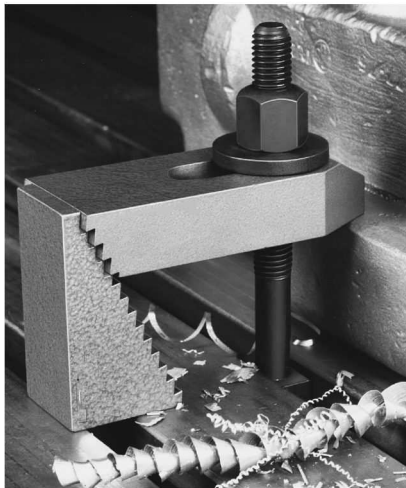
Order No.	b ₁	l	 metric	 inch	a	b ₂	b ₃	e ₁	e ₂	 g
1002.W007	6,6	50	M 6	1/4	10	20	8	10	20	55
1002.W008	6,6	80	M 6	1/4	10	20	8	10	45	90
1002.W009	9,0	60	M 8	5/16	12	25	10	13	22	100
1002.W010	9,0	100	M 8	5/16	12	25	10	13	60	180
1002.W011	11,0	80	M10	3/8	15	30	12	15	30	200
1002.W012	11,0	125	M10	3/8	15	30	12	15	70	350
1002.W014	14,0	100	M12, M14	1/2	20	40	14	21	40	450
1002.W015	14,0	160	M12, M14	1/2	20	40	14	21	90	770
1002.W018	18,0	125	M16, M18	5/8	25	50	18	26	45	900
1002.W019	18,0	200	M16, M18	5/8	25	50	18	26	110	1500
1002.W022	22,0	160	M20, M22	3/4	30	60	22	30	60	1700
1002.W026	26,0	200	M24	1	30	70	26	35	80	2500



Step Clamps



1002



Material

Heat-treated steel, enamelled.

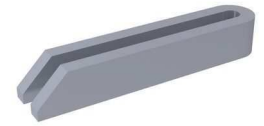
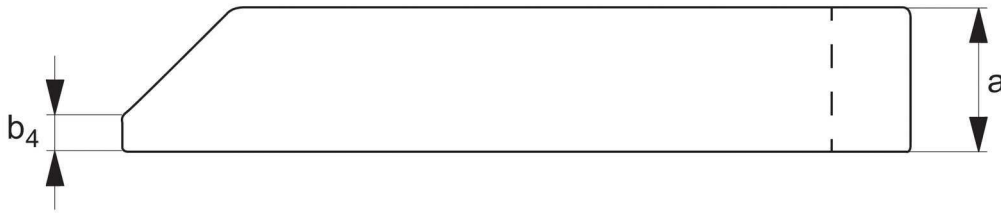
Technical Notes

Only to be used with step blocks no. 1400.

Forked Clamps



1010

**Material**

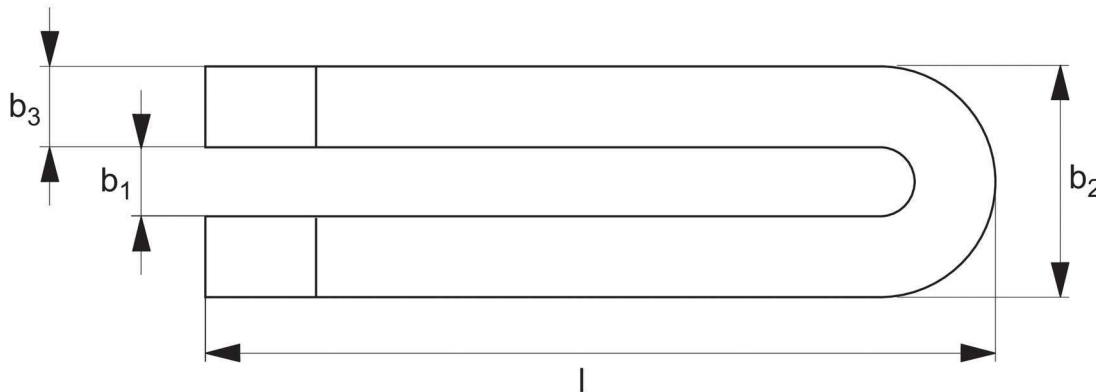
Heat-treated steel, enamelled.


Technical Notes

() = Not to DIN standard.

Tips

Clamp support no. 2600 is often used with this clamp see.

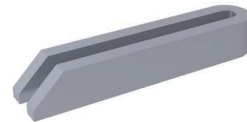
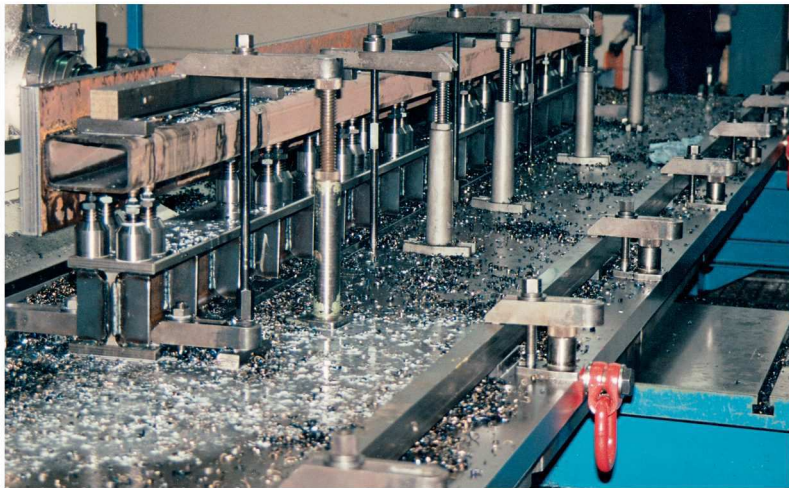


Order No.	b ₁	l	For metric thread	For imperial thread	a	b ₂	b ₃	b ₄	 g
1010.W007	6,6	60	M 6	1/4	12	19	6	3	60
1010.W009	9,0	80	M 8	5/16	15	25	8	4	140
1010.W011	11,0	100	M10	3/8	20	31	10	5	300
1010.W014	14,0	125	M12, M14	1/2	25	38	12	6	570
1010.W015	14,0	160	M12, M14	1/2	25	38	12	6	730
1010.W016	14,0	200	M12, M14	1/2	25	38	12	6	910
1010.W018	18,0	160	M16, M18	5/8	30	48	15	8	1080
1010.W019	18,0	200	M16, M18	5/8	30	48	15	8	1360
1010.W020	18,0	250	M16, M18	5/8	40	48	15	10	2250
1010.W022	22,0	200	M20, M22	3/4	40	52	15	10	1800
1010.W023	22,0	250	M20, M22	3/4	40	62	20	10	3000
1010.W024	22,0	315	M20, M22	3/4	40	62	20	10	3850
1010.W025	22,0	500	M20, M22	3/4	50	62	20	10	7600
1010.W026	26,0	200	M24	1	40	66	20	10	2400
1010.W027	26,0	250	M24	1	40	66	20	10	3000
1010.W028	26,0	315	M24	1	40	66	20	10	3850
1010.W029	26,0	400	M24	1	50	66	20	10	5962
1010.W030	26,0	500	M24	1	50	66	20	10	7600
1010.W031	26,0	600	M24	1	50	66	20	10	9042
1010.W032	26,0	800	M24	1	50	66	20	10	12122
1010.W034	33,0	250	M30	1-1/4	50	74	20	12	3700
1010.W035	33,0	315	M30	1-1/4	50	74	20	12	4750
1010.W036	33,0	400	M30	1-1/4	50	74	20	12	6100
1010.W037	33,0	600	M30	1-1/4	50	74	20	12	9200
1010.W038	33,0	1000	M30	1-1/4	60	94	30	12	28000
1010.W040	40,0	400	M36	1-1/2	60	100	30	12	11000
1010.W041	40,0	600	M36	1-1/2	60	100	30	12	16500
1010.W042	(43,0)	600	M36, M42	1-1/2	80	123	40	12	29600

Forked Clamps



1010



Material

Heat-treated steel, enamelled.

Technical Notes

() = Not to DIN standard.

Tips

Clamp support no. 2600 is often used with this clamp see.

Forked Clamps

with pin end - DIN 6315C



1012

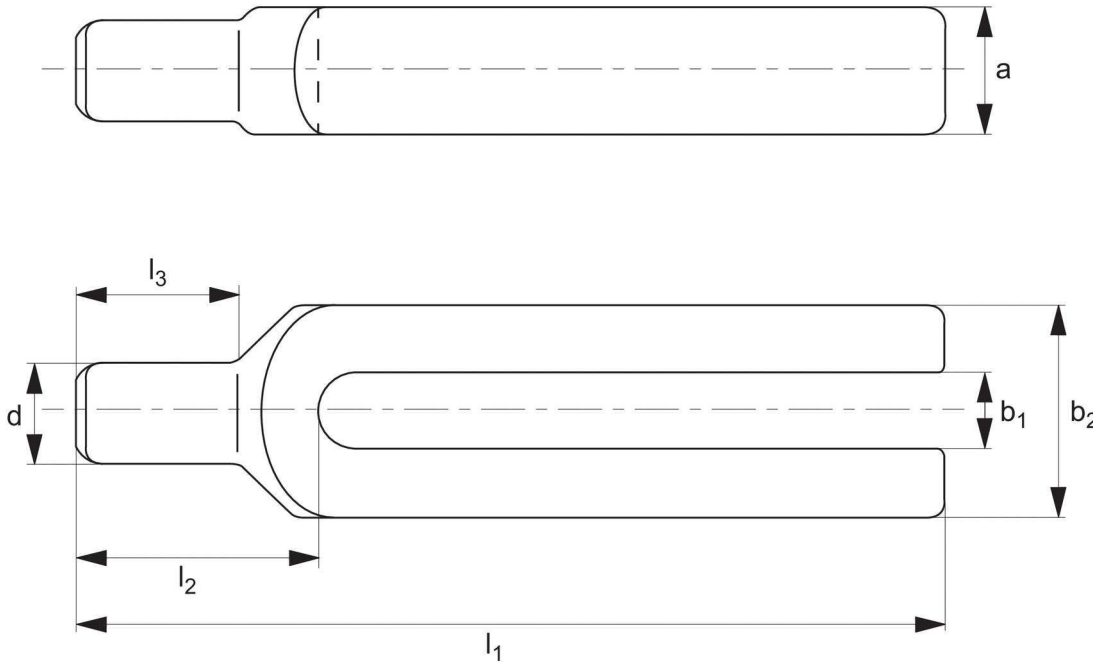


Material

Tempered steel, varnished

Technical Notes

For T-bolts, washers and nuts see part 2100 to 2430.



Order No.	b_1	l_1	For metric thread	For imperial thread	a	b_2	d	l_2	l_3	$\frac{\Delta}{g}$
1012.W009	9	100	M 8	5/16	15	30	12	30	18	220
1012.W011	11	125	M10	3/8	20	30	16	36	24	350
1012.W014	14	160	M12, M14	1/2	25	40	20	45	30	750
1012.W015	14	200	M12, M14	1/2	25	40	20	45	30	950
1012.W018	18	200	M16, M18	5/8	30	50	24	55	36	1400
1012.W019	18	250	M16, M18	5/8	30	50	24	55	36	1750
1012.W022	22	250	M20, M22	3/4	40	60	30	65	45	2700
1012.W023	22	315	M20, M22	3/4	40	60	30	65	45	3400
1012.W026	26	250	M24	1	40	70	38	80	56	3200
1012.W027	26	315	M24	1	40	70	38	80	56	4100
1012.W034	33	315	M30	1-1/4	50	80	45	85	56	5700
1012.W035	33	400	M30	1-1/4	50	80	45	85	56	7000

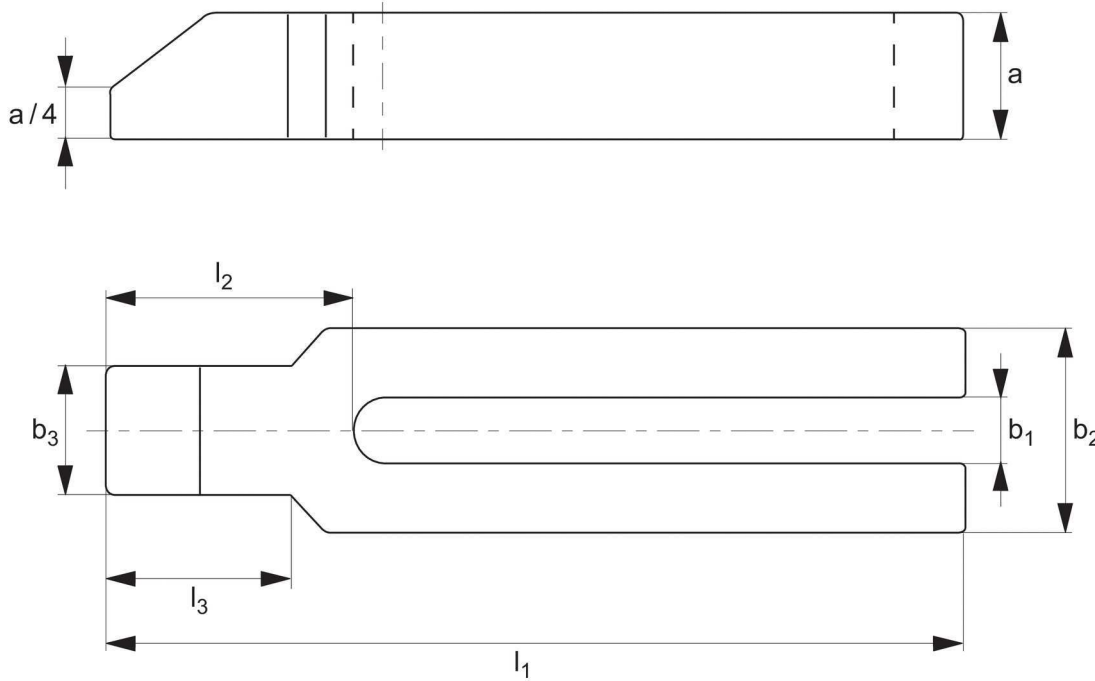


Forked Clamps

with shoe



1014



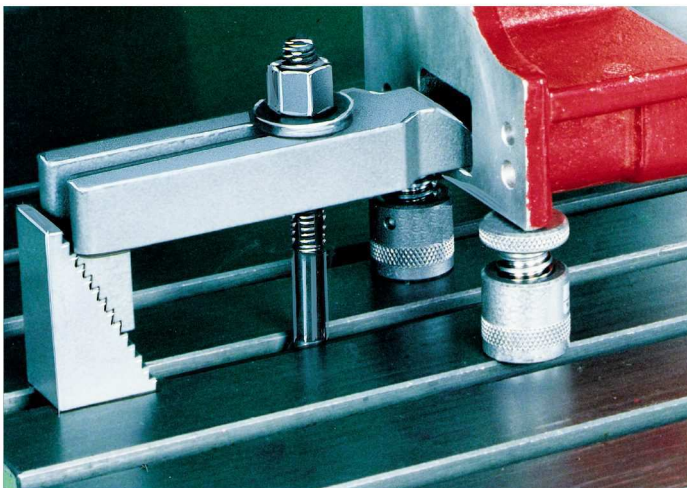
Material

Tempered steel, varnished.

Technical Notes

For T-bolts, washers and nuts see part 2100 to 2430.

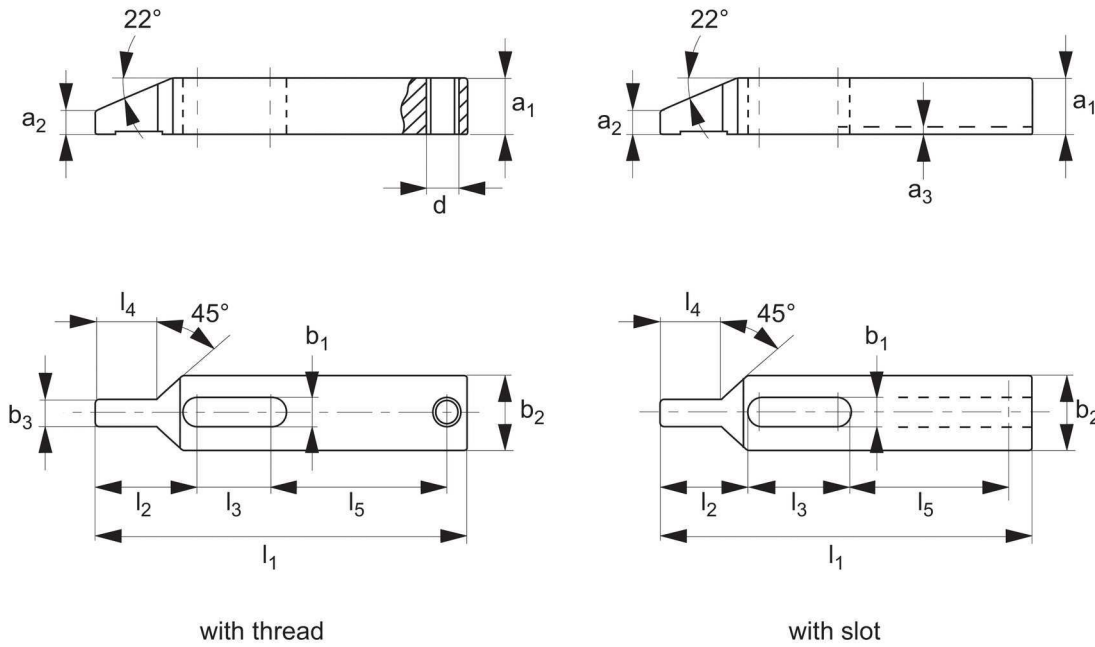
Order No.	b ₁	l ₁	For metric thread	For imperial thread	a	b ₂	b ₃	l ₂	l ₃	g
1014.W009	9	100	M 8	5/16	15	30	16	32	18	240
1014.W011	11	125	M10	3/8	20	30	20	38	24	380
1014.W014	14	160	M12, M14	1/2	25	40	24	47	30	800
1014.W015	14	200	M12, M14	1/2	25	40	24	47	30	950
1014.W018	18	200	M16, M18	5/8	30	50	28	57	36	1500
1014.W019	18	250	M16, M18	5/8	30	50	28	57	36	1850
1014.W022	22	250	M20, M22	3/4	40	60	35	68	45	2900
1014.W023	22	315	M20, M22	3/4	40	60	35	68	45	3600
1014.W026	26	250	M24	1	40	70	43	83	56	3400
1014.W027	26	315	M24	1	40	70	43	83	56	4300
1014.W034	33	315	M30	1-1/4	50	80	50	88	56	6000
1014.W035	33	400	M30	1-1/4	50	80	50	88	56	7300



Narrow Nose Clamps



1016



Material

Heat-treated steel, blackened.

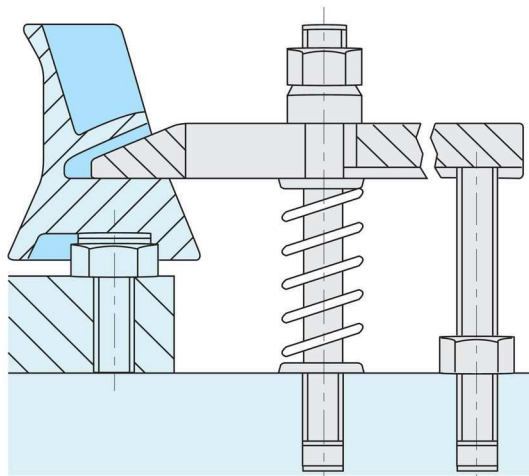
Technical Notes

The small nose permits clamping even on difficult to reach areas.

Tips

Choose 'With Thread' for vertical adjustment, and 'With Slot' for horizontal adjustment.

Order No.	Type	b ₁	l ₁	a ₁	a ₂	a ₃	b ₂	b ₃	d	l ₂	l ₃	l ₄	l ₅	Max. starting torque Nm.	g
1016.W107	With Thread	6,6	80	8	2,5	-	15	7,5	M 6	17	23	13	34	5	54
1016.W109	With Thread	9,0	100	12	4,0	-	20	9,5	M 8	22	29	17	42	12	133
1016.W111	With Thread	11,0	125	15	5,0	-	25	11,5	M10	28	36	21	52	30	261
1016.W113	With Thread	13,0	150	20	7,0	-	30	13,5	M12	34	43	25	63	55	504
1016.W117	With Thread	17,0	175	25	9,0	-	35	15,5	M16	40	52	29	70	80	828
1016.W207	With Slot	6,6	80	8	2,5	2,5	15	7,5	-	17	23	13	34	5	50
1016.W209	With Slot	9,0	100	12	4,0	3,0	20	9,5	-	22	29	17	42	12	127
1016.W211	With Slot	11,0	125	15	5,0	3,5	25	11,5	-	28	36	21	52	30	251
1016.W213	With Slot	13,0	150	20	7,0	4,0	30	13,5	-	34	43	25	63	55	488
1016.W217	With Slot	17,0	175	25	9,0	4,5	35	15,5	-	40	52	29	70	80	800
1016.W222	With Slot	22,0	225	35	15,5	5,5	50	19,5	-	52	62	33	-	-	2200
1016.W226	With Slot	26,0	250	40	17,5	5,5	60	21,5	-	60	71	36	-	-	3340

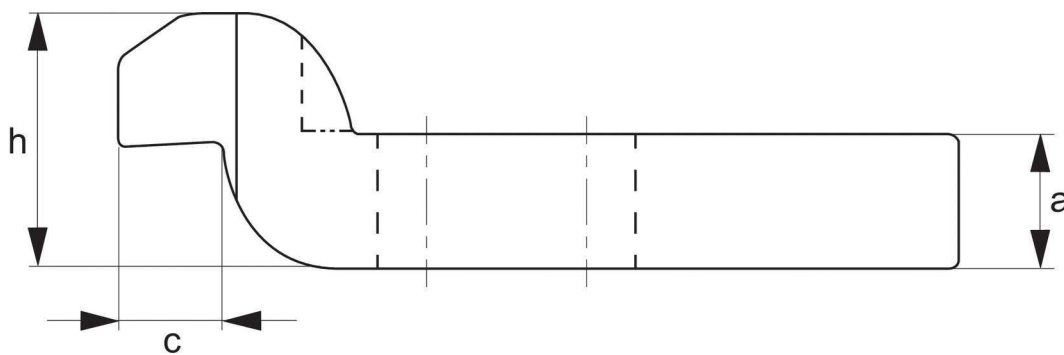


Goose-Neck Clamps

DIN 6316



1020

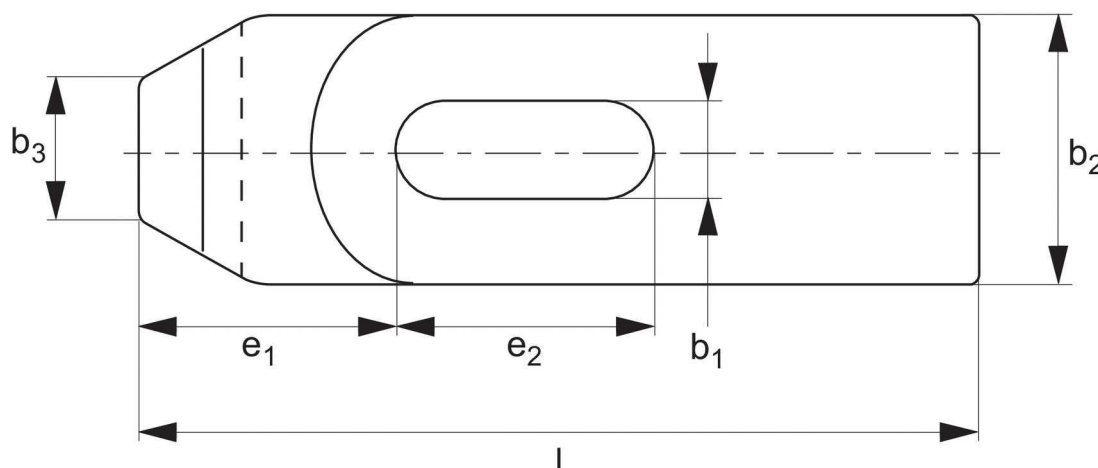


Material

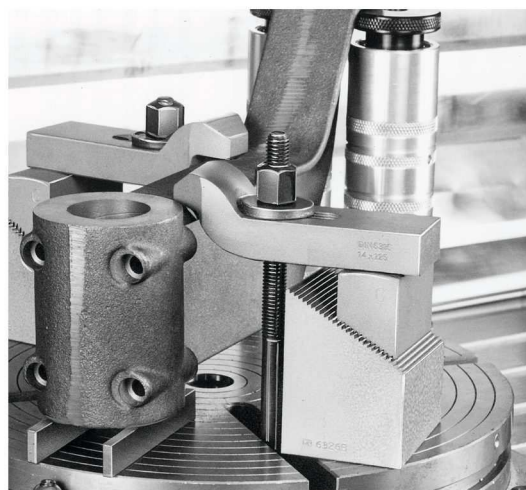
Heat-treated steel, enamelled.

Technical Notes

() = not to DIN standard.
For T-bolts, washers and nuts see part 2100 to 2430 .



Order No.	b_1	l	For metric thread	For imperial thread	a	b_2	b_3	c	e_1	e_2	h	g
1020.W007	6,6	60	M 6	1/4	10	20	10	8	22	20	9	81
1020.W009	9	80	M 8	5/16	12	25	12	9	27,5	25	11	166
1020.W011	11	100	M10	3/8	15	30	15	12	36	32	14	299
1020.W014	14	125	M12, M14	1/2	20	40	20	16	44	40	18	678
1020.W018	18	125	M16, M18	5/8	25	50	25	20	51,5	40	23	1049
1020.W019	18	160	M16, M18	5/8	25	50	25	20	51,5	50	23	1366
1020.W022	22	160	M20, M22	3/4	30	60	30	24	59	55	27	1911
1020.W023	22	200	M20, M22	3/4	30	60	30	24	59	70	27	2417
1020.W026	26	200	M24	1	(35)	70	35	(25)	76	60	32	3315
1020.W027	26	250	M24	1	(35)	70	35	(25)	76,5	80	32	4132
1020.W034	33	250	M30	1-1/4	40	80	40	40	96	80	45	5225
1020.W035	33	315	M30	1-1/4	50	80	40	40	96	100	45	8459
1020.W043	(43)	400	M36, M42	1-7/16, 1-1/2	60	100	50	50	105	120	55	17078

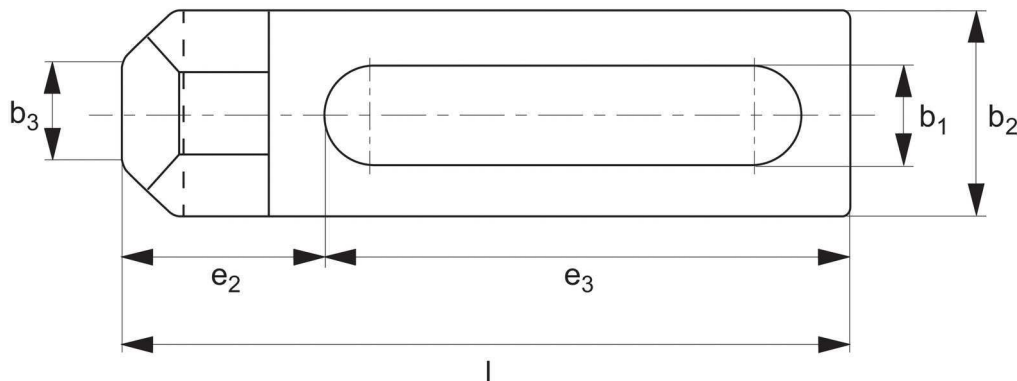
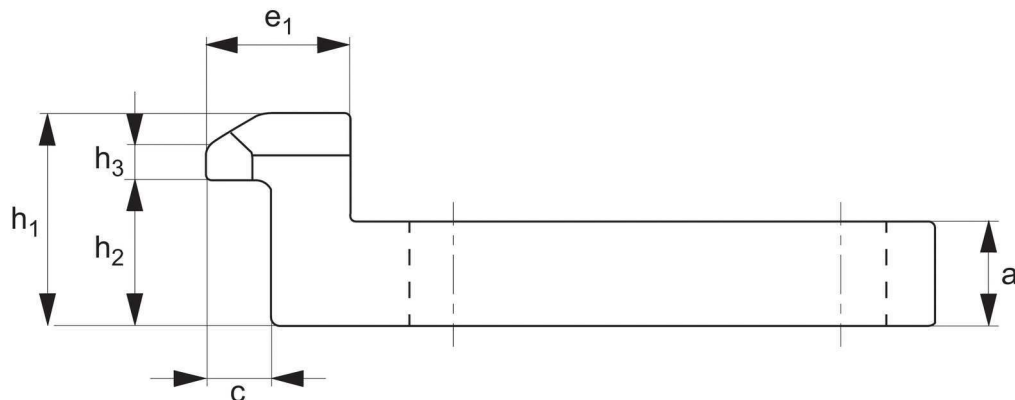


Stepped Clamps

long slot



1021




Material

Heat-treated steel, tempered, blackened.

Technical Notes

For T-bolts, washers and nuts see part 2100 to 2430.

Order No.	b_1	l	a	b_2	b_3	c	e_1	e_2	e_3	h_1	h_2	h_3	For metric thread	For imperial thread	 g
1021.W107	6,6	55	8	15	8	5	11	15,5	36	16	11	2	M 6	1/4	39

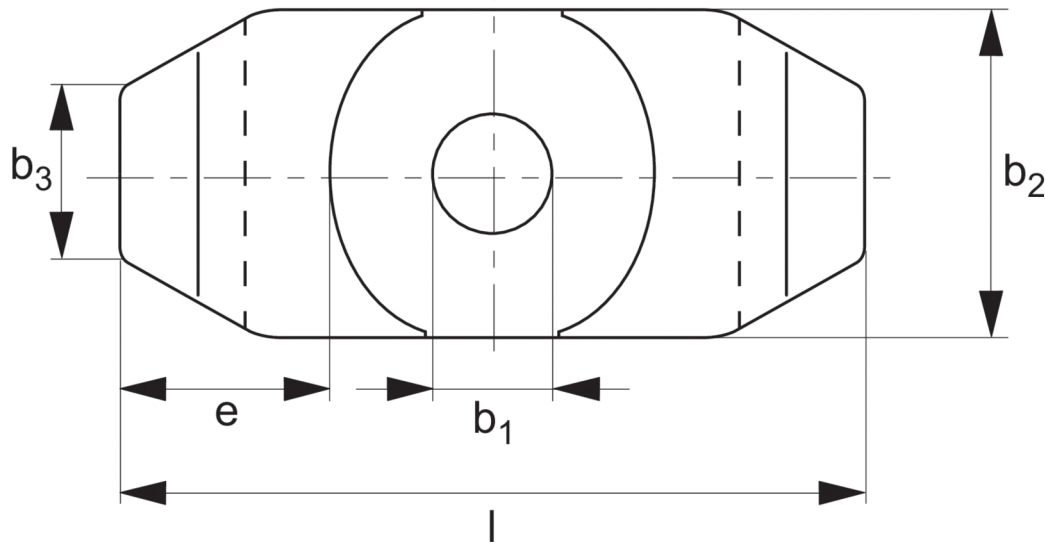
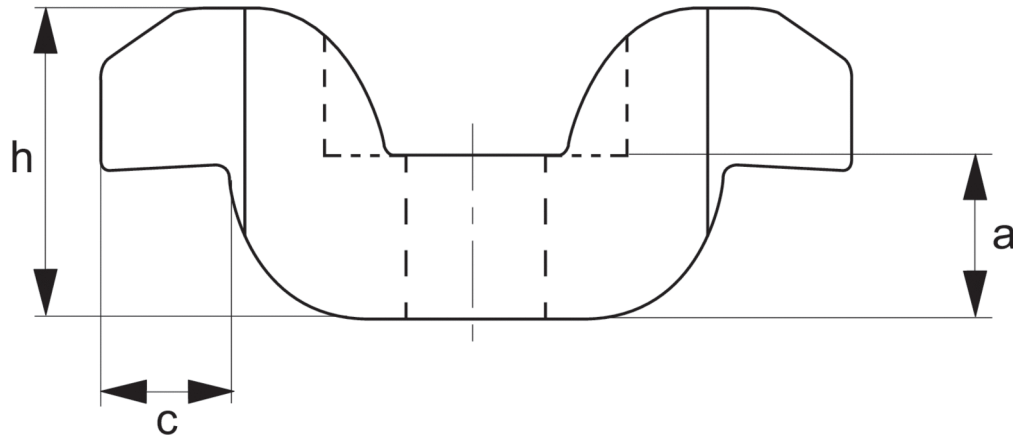
Double Goose-Neck Clamps




1022



Material
Tempered steel, varnished

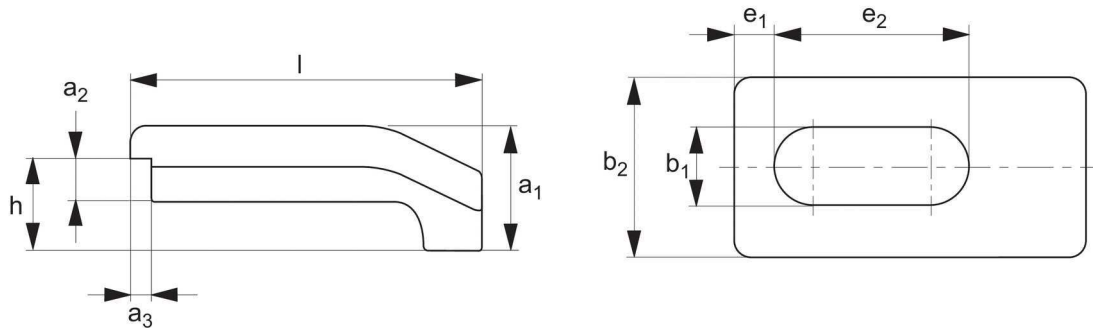


Order No.	b_1	l	For clamp screw	a	b_2	b_3	c	e	h	 g
1022.W018	18	100	M12 - M18	20	40	20	16	26	40	620
1022.W025	25	140	M20 - M24	30	60	30	24	38	60	2040

Machine Vice Clamps



1029



Material

Alloy steel, blackened.

Technical Notes

Supplied in pairs.

Order no.	b_1	b_2	l	For metric thread	For imperial thread	For jaw width	a_1	$a_2 \times a_3$	h	e_1	e_2	 g
1029.W015	16,5	41	78	M12, 14, 16	1/2, 5/8	100	22,5	10x5,5	15	10	40	685

Plain Clamps

with self-aligning support



1030



Material

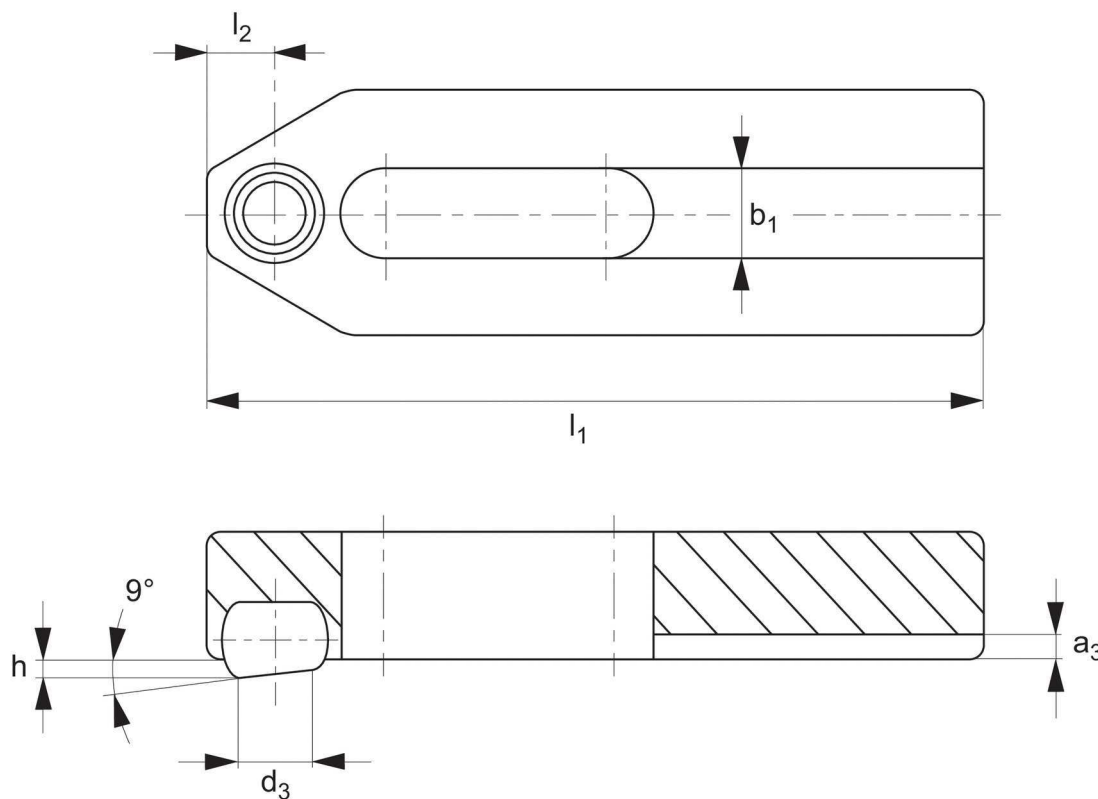
Body: heat-treated steel, blackened. Ball: ball-bearing steel, hardened, bright.

Technical Notes

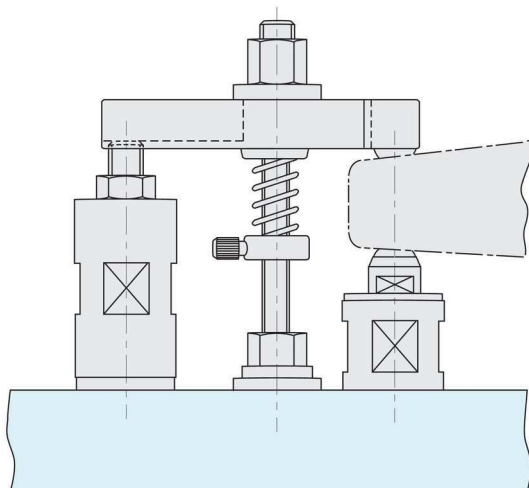
Ball secured against turning. Other dimensions as no. 1000.

Tips

Provides alignment of the clamp with the workpiece, useful where there is some component variation. For suitable supporting screw see part no. 1840.



Order No.	b_1	l_1	d_3	a_3	h	l_2	ball \emptyset	 g
1030.W0007	6,6	50	5,8	2,5	1,6	5,0	8,5	61

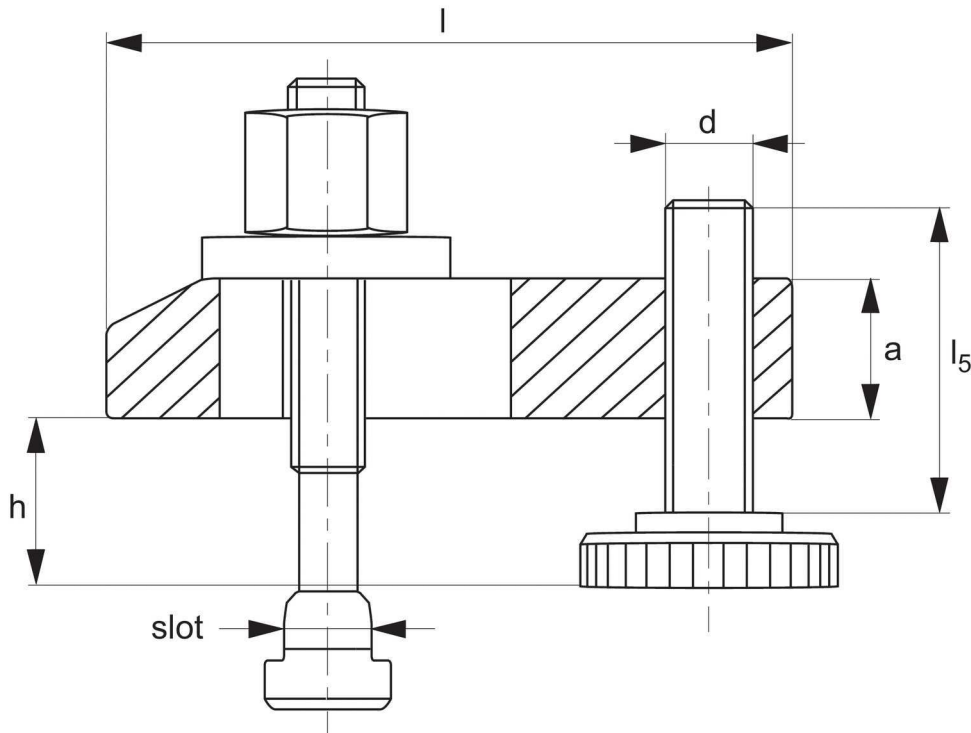


Adjustable Plain Clamps

with height adjusting screw



1040

**Material**

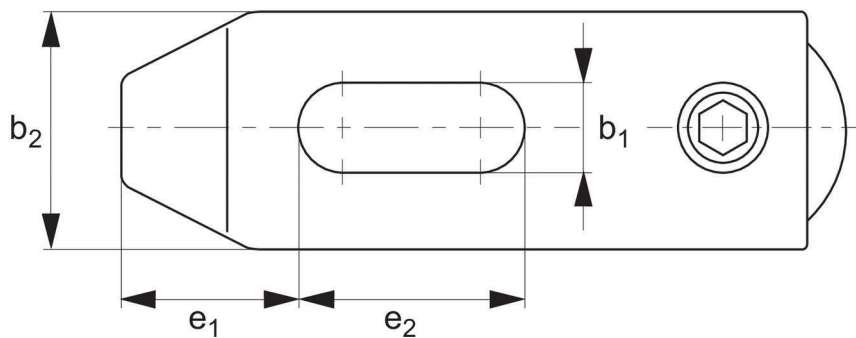
Heat-treated steel, enamelled.


Technical Notes

h* - dependent on depth of slot and position of fixture nut.

Tips

Often used for clamping press tools.




Order No.	Type	Slot	h*	b ₁ x l	T-bolt	d x l ₅	a	b ₂	e ₁	e ₂	 g
1040.W010	Without T-bolt	10	8 - 37	11x80	-	M10x39	15	30	15	30	200
1040.W012	Without T-bolt	12 & 14	10 - 47	14x100	-	M12x49	20	40	21	40	560
1040.W014	Without T-bolt	12 & 14	10 - 92	14x100	-	M12x94	20	40	21	40	635
1040.W016	Without T-bolt	16 & 18	13 - 52	18x125	-	M16x55	25	50	26	45	1110
1040.W018	Without T-bolt	16 & 18	13 - 87	18x125	-	M16x90	25	50	26	45	1230
1040.W020	Without T-bolt	20 & 22	16 - 65	22x160	-	M20x69	30	60	30	60	2050
1040.W022	Without T-bolt	20 & 22	16 - 105	22x160	-	M20x69	30	60	30	60	2230
1040.W024	Without T-bolt	24	20 - 83	26x200	-	M24x87	30	60	35	80	3200
1040.W026	Without T-bolt	24	20 - 133	26x200	-	M24x137	30	70	35	80	3470
1040.W028	Without T-bolt	24	20 - 80	26x250	-	M24x87	35	70	35	105	4340
1040.W030	Without T-bolt	24	20 - 130	26x250	-	M24x137	35	70	35	105	4520
1040.W032	Without T-bolt	30	24 - 150	33x315	-	M30x180	50	80	45	130	11215
1040.W034	Without T-bolt	36 & 42	24 - 150	43x400	-	M30x180	80	100	80	170	24350
1040.W110	With T-bolt	10	8 - 32	11x80	M10x10x80	M10x39	15	30	15	30	340
1040.W112	With T-bolt	12	10 - 40	14x100	M12x12x100	M12x49	20	40	21	40	700
1040.W113	With T-bolt	12	24 - 92	14x100	M12x12x160	M12x94	20	40	21	40	830
1040.W114	With T-bolt	14	10 - 38	14x100	M12x14x100	M12x49	20	40	21	40	720
1040.W115	With T-bolt	14	23 - 92	14x100	M12x14x160	M12x94	20	40	21	40	845
1040.W116	With T-bolt	16	13 - 48	18x125	M16x16x125	M16x55	25	50	26	45	1400
1040.W117	With T-bolt	16	15 - 83	18x125	M16x16x160	M16x90	25	50	26	45	1610
1040.W118	With T-bolt	18	13 - 46	18x125	M16x18x125	M16x55	25	50	26	45	1400
1040.W119	With T-bolt	18	13 - 81	18x125	M16x18x160	M16x90	25	50	26	45	1630
1040.W120	With T-bolt	20	16 - 65	22x160	M20x20x160	M20x69	30	60	30	60	2600
1040.W121	With T-bolt	20	21 - 105	22x160	M20x20x200	M20x109	30	60	30	60	2930
1040.W122	With T-bolt	22	16 - 65	22x160	M20x22x160	M20x69	30	60	30	60	2770
1040.W123	With T-bolt	22	19 - 105	22x160	M20x22x200	M20x109	30	60	30	60	2980
1040.W124	With T-bolt	28	20 - 80	26x250	M24x28x200	M24x87	35	70	35	105	5486
1040.W125	With T-bolt	28	30 - 130	26x250	M24x28x250	M24x137	35	70	35	105	5716

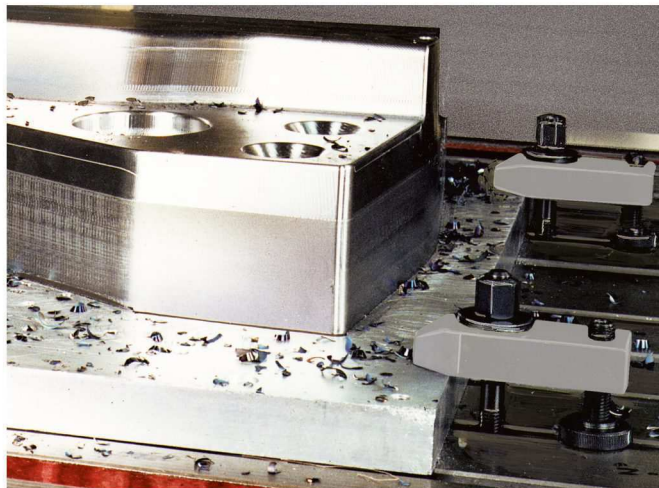
Adjustable Plain Clamps

with height adjusting screw



1040

Order No.	Type	Slot	h*	b ₁ x l	T-bolt	d x l ₅	a	b ₂	e ₁	e ₂	 g
1040.W126	With T-bolt	36	24 - 150	26x250	M30x36x315	M30x180	50	80	45	130	11995
1040.W127	With T-bolt	42	24 - 150	26x250	M30x36x315	M30x180	50	80	45	130	25683



Material

Heat-treated steel, enamelled.

Technical Notes

h* - dependent on depth of slot and position of fixture nut.

Tips

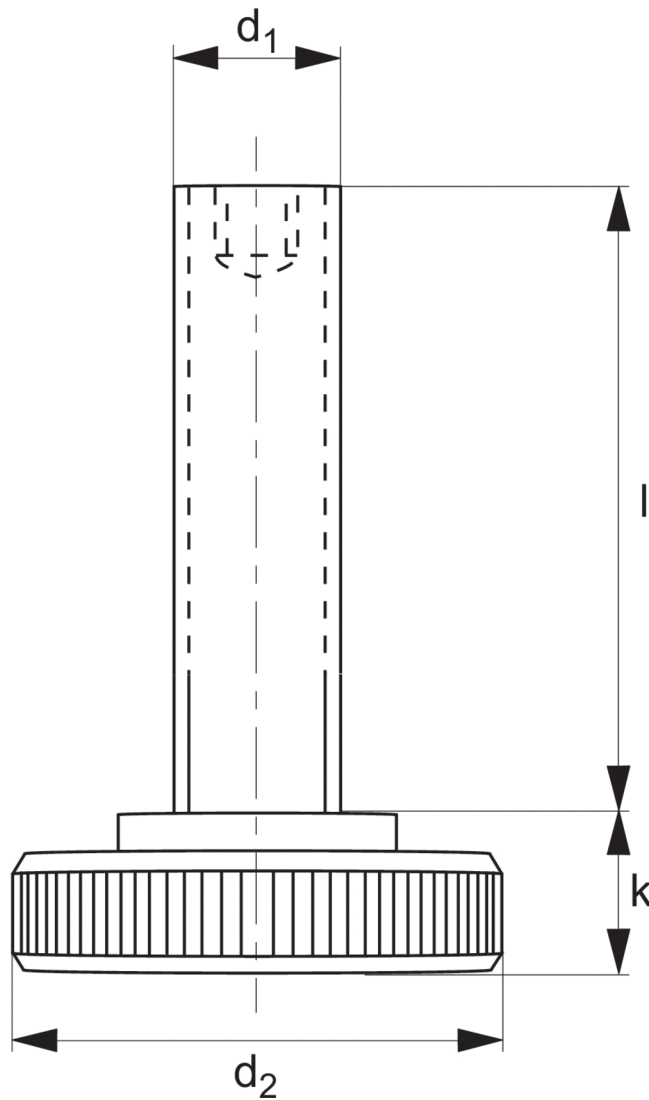
Often used for clamping press tools.

Support Screw


for adjustable clamps



1041

**Material**

Hardened steel, strength class 8,8.

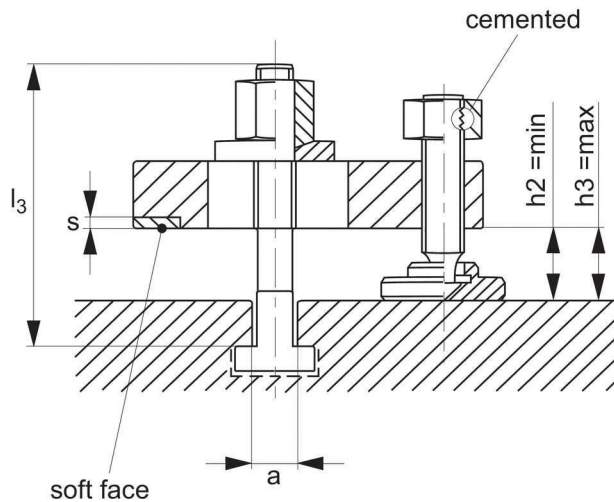
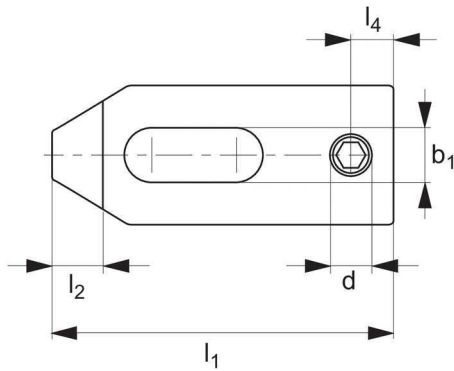
Order No.	$d_1 \times l$	d_2	k	 g
1041.W013	M12x94	36	10	145
1041.W017	M16x90	42	13	230
1041.W021	M20x109	50	16	400
1041.W025	M24x137	60	20	820
1041.W030	M30x180	80	24	1704
1041.W010	M10x39	30	8	52
1041.W012	M12x49	36	10	96
1041.W016	M16x55	42	13	180
1041.W020	M20x69	50	16	320
1041.W024	M24x87	60	20	590

Adjustable Plain Clamps

with soft brass face



1042




Material

Clamps: heat-treated steel, blackened.
Protective face: brass, brazed.

Technical Notes

The brass plate brazed onto the clamp protects the work-piece from damage under clamping. The clamp can be used either side.
For other dimensions please see no. 1000.

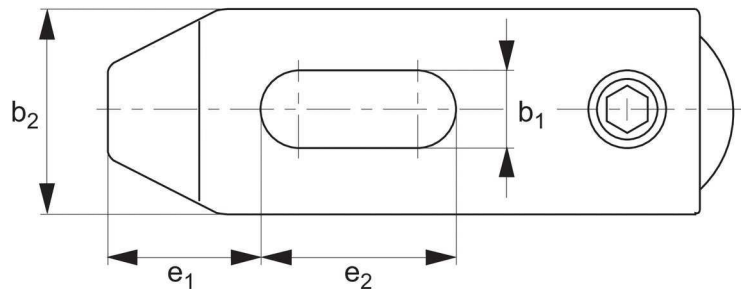
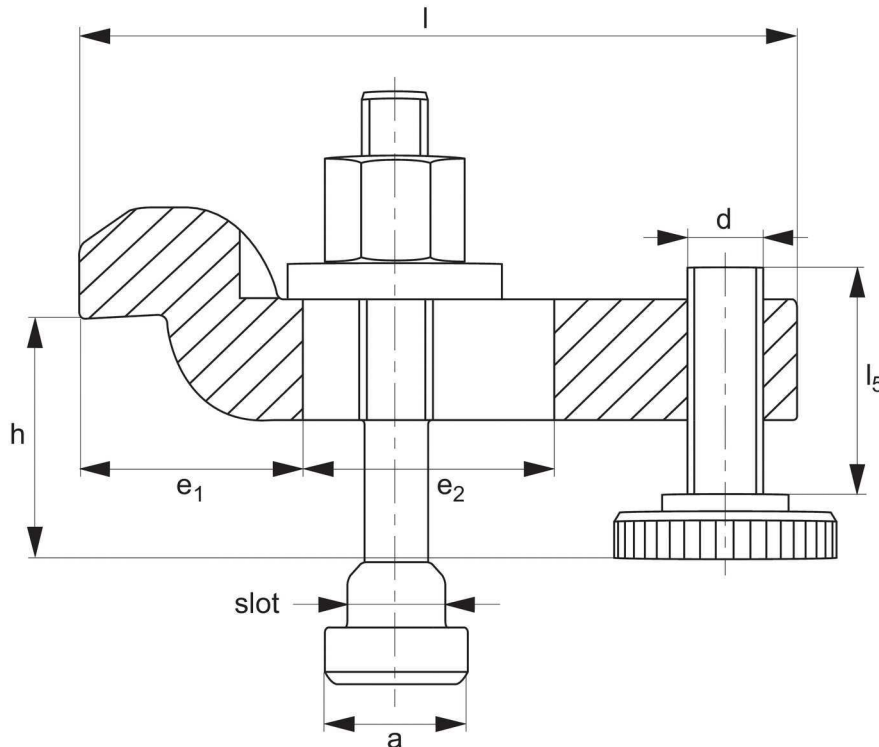
Order No.	Type	a	l_3	b_1	Min. c lamp. height h_2	Max. clamp height h_3	l_1	d	l_2	l_4	s	 g
1042.W015	With Adj. Screw & Bolt	8	50	9	8	16	60	M 8	10	8	2	200
1042.W016	With Adj. Screw & Bolt	8	80	9	8	43	60	M 8	10	8	2	220
1042.W025	With Adj. Screw & Bolt	10	65	11	10	22	80	M10	12	10	2	385
1042.W026	With Adj. Screw & Bolt	10	100	11	10	58	80	M10	12	10	2	420
1042.W035	With Adj. Screw & Bolt	12	80	14	10	28	100	M12	15	12	3	740
1042.W036	With Adj. Screw & Bolt	12	125	14	10	71	100	M12	15	12	3	805
1042.W037	With Adj. Screw & Bolt	14	80	14	10	26	100	M12	15	12	3	755
1042.W038	With Adj. Screw & Bolt	14	125	14	10	71	100	M12	15	12	3	820
1042.W045	With Adj. Screw & Bolt	16	100	18	12	31	125	M16	20	16	3	1470
1042.W046	With Adj. Screw & Bolt	16	160	18	12	87	125	M16	20	16	3	1630
1042.W047	With Adj. Screw & Bolt	18	100	18	12	32	125	M16	20	16	3	1490
1042.W048	With Adj. Screw & Bolt	18	160	18	12	87	125	M16	20	16	3	1650
1042.W011	With Adj. Screw	-	-	9	8	23	60	M 8	10	8	2	150
1042.W012	With Adj. Screw	-	-	9	8	43	60	M 8	10	8	2	160
1042.W021	With Adj. Screw	-	-	11	10	38	80	M10	12	10	2	295
1042.W022	With Adj. Screw	-	-	11	10	58	80	M10	12	10	2	310
1042.W031	With Adj. Screw	-	-	14	10	31	100	M12	15	12	3	590
1042.W032	With Adj. Screw	-	-	14	10	71	100	M12	15	12	3	620
1042.W041	With Adj. Screw	-	-	18	12	42	125	M16	20	16	3	1150
1042.W042	With Adj. Screw	-	-	18	12	87	125	M16	20	16	3	1220
1042.W010	Without Accessories	-	-	9	-	-	60	M 8	10	8	2	104
1042.W020	Without Accessories	-	-	11	-	-	80	M10	12	10	2	211
1042.W030	Without Accessories	-	-	14	-	-	100	M12	15	12	3	461
1042.W040	Without Accessories	-	-	18	-	-	125	M16	20	16	3	917

Adjustable Goose-Neck Clamps

with height adjusting screw



1050



Material


Heat-treated steel, enamelled.

Technical Notes

h^* - dependent on depth of T-slots and position of fixture nuts.

Tips

Particularly suitable for clamping low workpieces. The clamping height can be steplessly adjusted by means of the adjusting screw.

Order No.	Type	Slot	h^*	$b_1 \times l$	 g
1050.W010	With T-bolt	10	22 - 46	11x100	440
1050.W012	With T-bolt	12	28 - 58	14x125	906
1050.W014	With T-bolt	14	28 - 56	14x125	926
1050.W016	With T-bolt	16	36 - 71	18x160	1859
1050.W018	With T-bolt	18	36 - 69	18x160	1875
1050.W020	With T-bolt	20	43 - 92	22x200	3322
1050.W022	With T-bolt	22	43 - 92	22x200	3352
1050.W110	Without T-bolt	10	22 - 51	11x100	344
1050.W112	Without T-bolt	12	28 - 65	14x125	761
1050.W116	Without T-bolt	16	36 - 75	18x160	1516
1050.W120	Without T-bolt	20	43 - 92	22x200	2669
1050.W124	Without T-bolt	24	52 - 115	26x200	3810

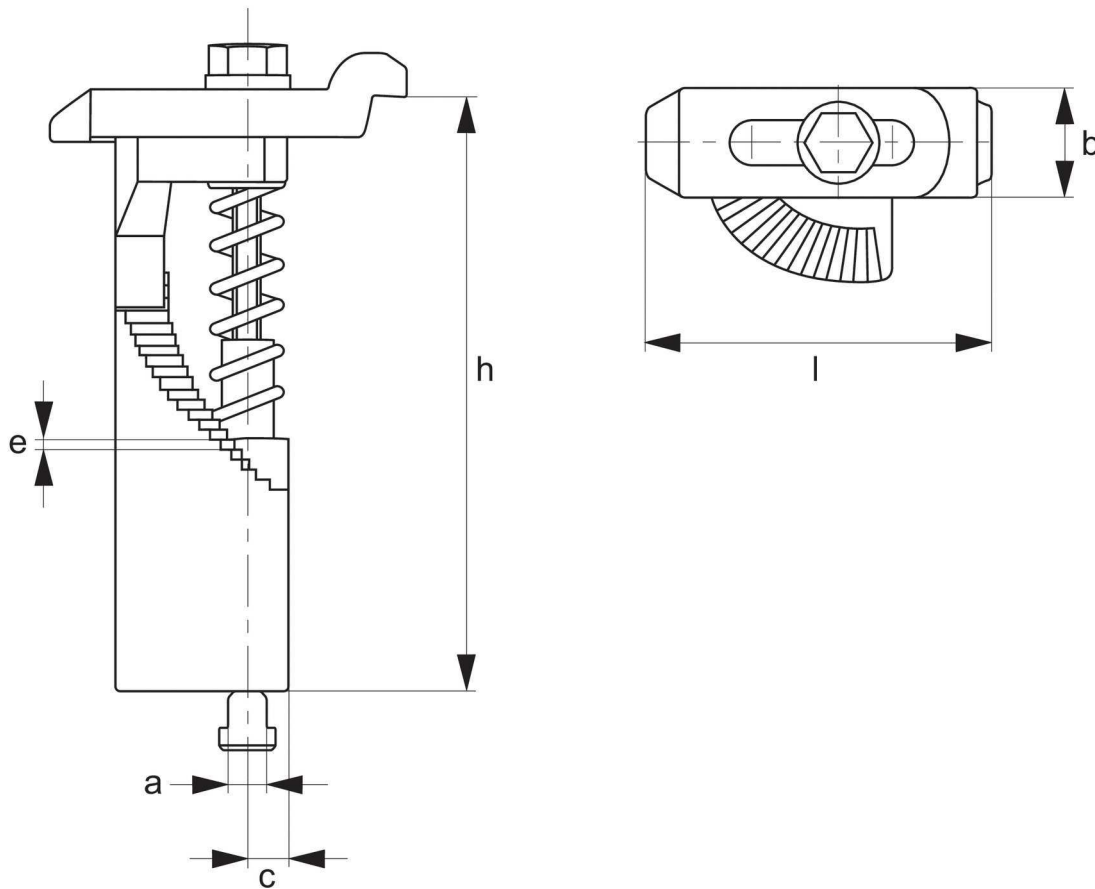
Order No.	T-bolt	$d \times l_s$	a	b_2	e_1	e_2
1050.W010	M10x10x80	M10x39	15	30	36	32
1050.W012	M12x12x100	M12x49	20	40	44	40
1050.W014	M12x14x100	M12x49	25	50	44	40
1050.W016	M16x16x125	M16x55	25	50	51.5	50
1050.W018	M16x18x125	M16x55	25	50	51.5	50
1050.W020	M20x20x160	M20x69	30	60	59	70
1050.W022	M20x22x160	M20x69	30	60	59	70
1050.W110	-	M10x39	15	30	36	32
1050.W112	-	M12x49	20	40	44	40
1050.W116	-	M16x55	25	50	51.5	50
1050.W120	-	M20x69	30	60	59	70
1050.W124	-	M24x87	35	70	76.5	60

Adjustable Step Pillar Clamps

with goose-neck



1055

**Material**


Forged steel, thread quality 8.8.

Technical Notes

Clamping unit for quick application. The compact construction ensures a small footprint on the machine table. Allows clamping over a wide height range with minimum fuss.

Tips

Please see part 2400 for T-nuts, supplied separately.

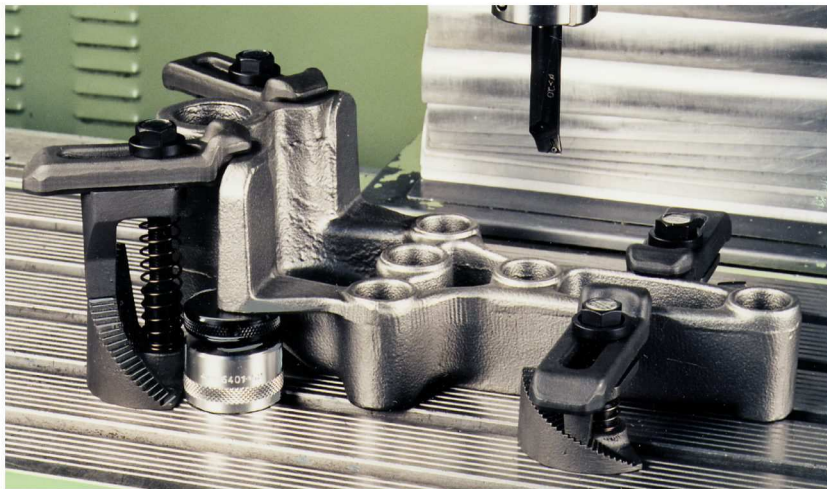
Order No.	Size	a Slot	b	c	e	h	l	 g
1055.W120	0	12	34	14	0,75	0 - 45	140	700
1055.W121	1	12	34	14	0,75	15 - 45	110	600
1055.W122	2	12	34	15	1,25	30 - 75	112	800
1055.W123	3	12	34	16	2,50	60 - 135	112	1200
1055.W124	4	12	34	18	2,50	120 - 195	112	1700
1055.W125	5	12	34	19	2,50	180 - 255	112	2200
1055.W126	0	14	34	14	0,75	0-45	140	700
1055.W127	1	14	34	14	0,75	15-45	112	600
1055.W128	2	14	34	15	1,25	30-75	112	800
1055.W129	3	14	34	16	2,50	60-135	112	1200
1055.W130	4	14	34	18	2,50	120-195	112	1700
1055.W131	5	14	34	19	2,50	180-255	112	2200
1055.W132	0	16	50	20	1,25	0 - 70	160	1900
1055.W133	1	16	50	20	1,25	25 - 70	125	1700
1055.W134	2	16	50	21	2,50	50 - 120	125	2500
1055.W135	3	16	50	21	3,75	100 - 220	125	3540
1055.W136	4	16	50	24	3,75	200 - 320	125	4900
1055.W137	0	18	50	20	1,25	0-70	160	1870
1055.W138	1	18	50	20	1,25	25-70	125	1670
1055.W139	2	18	50	21	2,50	50-120	125	2500
1055.W140	3	18	50	21	3,75	100-220	125	3580
1055.W141	4	18	50	24	3,75	200-320	125	4750

Adjustable Step Pillar Clamps

with goose-neck



1055



Material

Forged steel, thread quality 8.8.

Technical Notes

Clamping unit for quick application. The compact construction ensures a small footprint on the machine table. Allows clamping over a wide height range with minimum fuss.

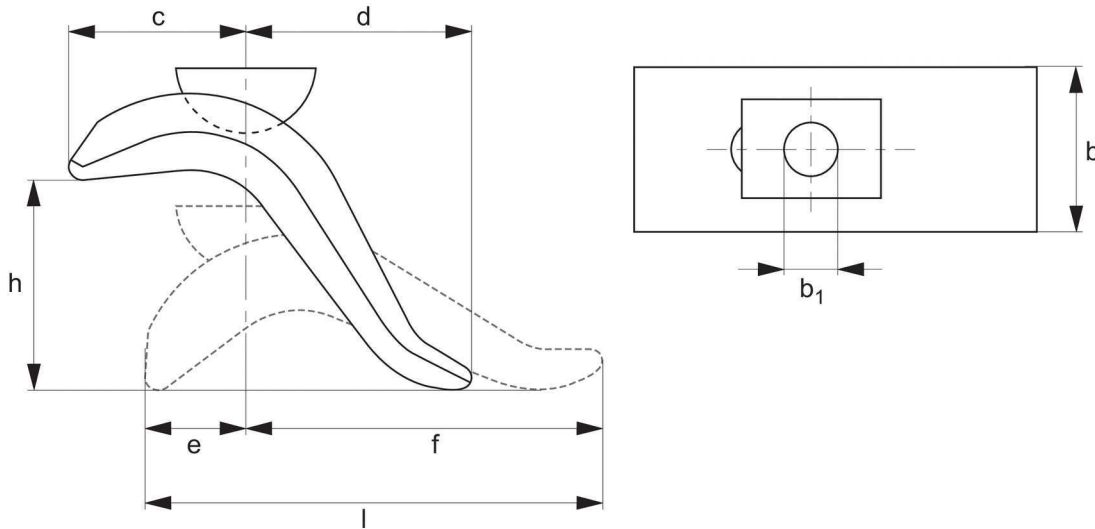
Tips

Please see part 2400 for T-nuts, supplied separately.

Step Adjustable Clamps



1060



Material

Forged steel, tempered and burnished.

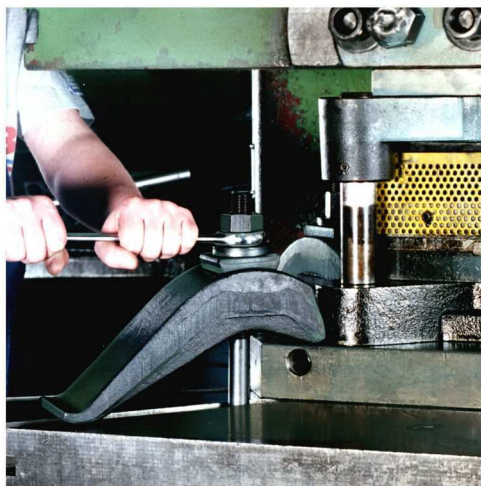
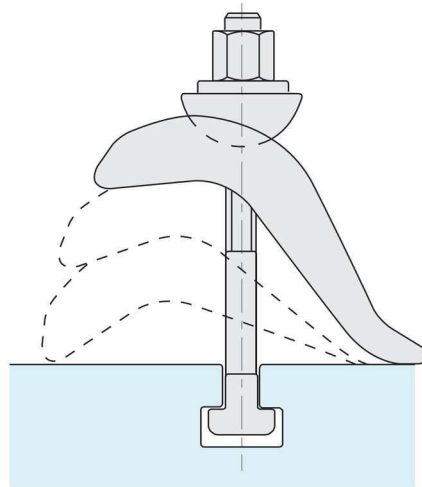
Technical Notes

Ideal for clamping components of varying heights and press tools - requires no support or packing pieces.

Tips

With T-bolt Type- supplied with T-bolt (no. 2100) as shown, as well as matching washer (no. 2500) and fixture nut (no. 2430).
Without T-bolt Type- no accessories supplied.

Order No.	Type	a/f	b ₁	c	d	e	f	Size	h clamping height	b x l	g
1060.W012	With T-bolt	12	17	55	60	30	110	M12x12x125	0 - 50	50x140	1070
1060.W014	With T-bolt	14	17	55	60	30	110	M12x14x125	0 - 50	50x140	1080
1060.W016	With T-bolt	16	17	55	60	30	110	M16x16x160	0 - 75	50x140	1270
1060.W018	With T-bolt	18	17	55	60	30	110	M16x18x160	0 - 75	50-140	1280
1060.W020	With T-bolt	20	21	70	80	40	135	M20x20x200	0 - 85	60-175	2300
1060.W022	With T-bolt	22	21	70	80	40	135	M20x22x200	0 - 85	60x175	2370
1060.W117	Without T-bolt	-	17	55	60	30	110	-	75	50x140	900
1060.W121	Without T-bolt	-	21	70	80	40	135	-	85	60x175	1600

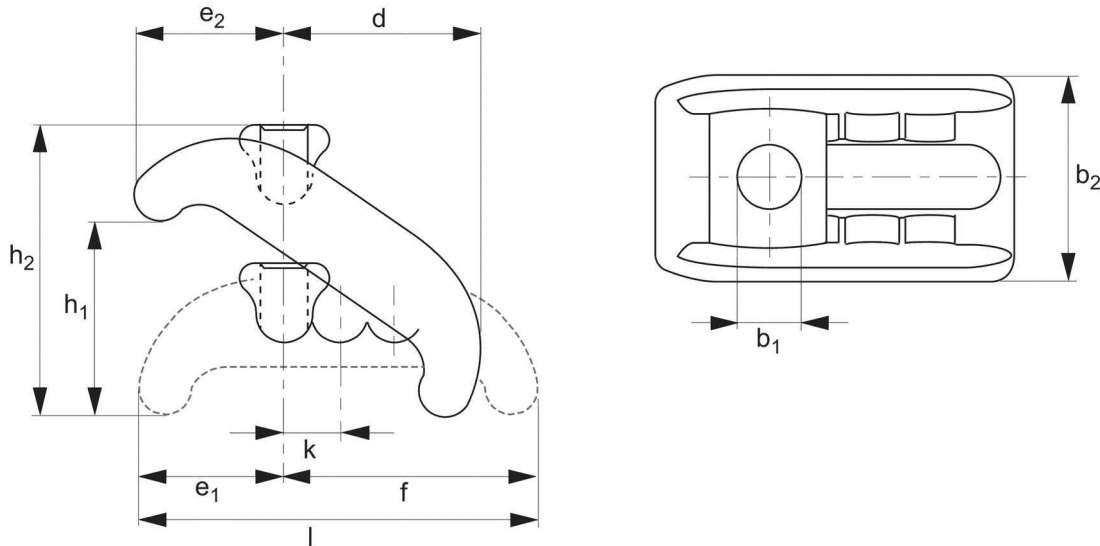


Stepless Adjustable Clamps

standard version



1062



Material

Tempered and galvanized steel, blue passivated.


Technical Notes

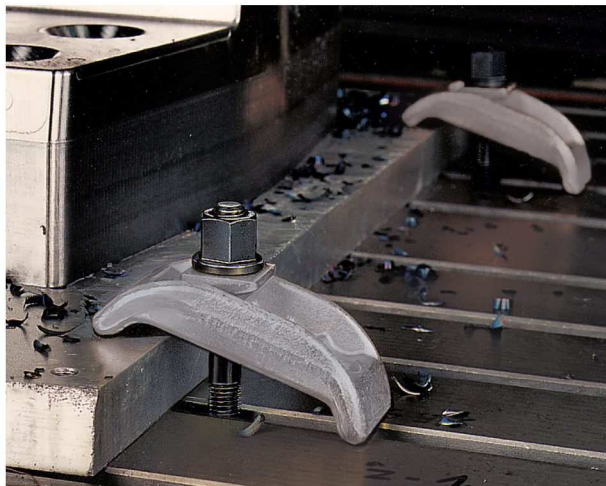
Ideal for press tool clamping. Clamp body has long slot for easy positioning.

Tips

Supplied without T-bolt or nut, for these parts see no. 2100, and no. 2440.

See table below for selection of correct T-bolt to achieve stated clamping height.

Order No.	b ₁	T-slot	For thread	h ₂	h ₁ clamping height	b ₂ x l	e ₂	d	e ₁	f	k	 g
1062.W012	13	12 & 14	M12	52	0 - 35	38x88	28	48	23	68	14	260
1062.W016	18	16 & 18	M16	80	0 - 55	56x130	38	74	29	101	18	809
1062.W020	22	20 & 22	M20	98	0 - 65	66x140	46	80	32	112	20	1253
1062.W026	26	24 & 28	M24	110	0 - 75	76x174	52	100	39	135	24	1718
1062.W032	32	36	M30	118	0 - 80	90x200	61	110	44	156	28	2785

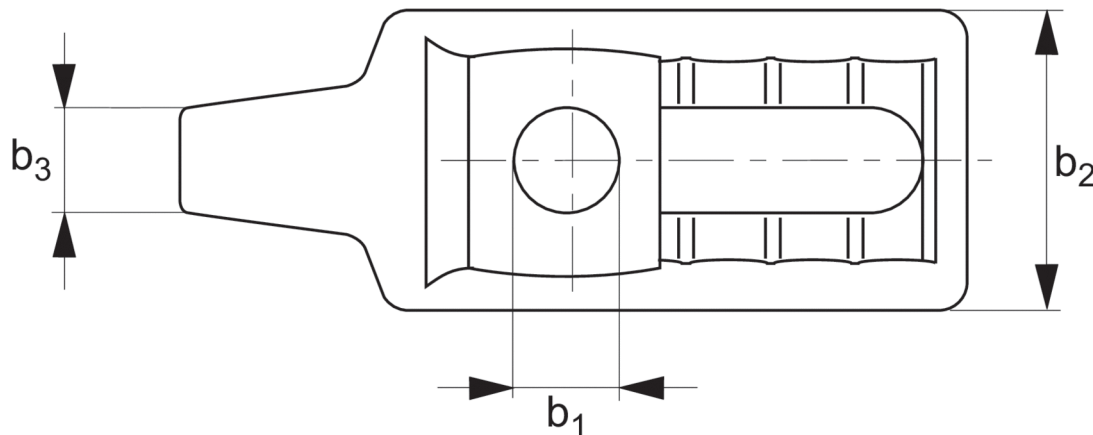
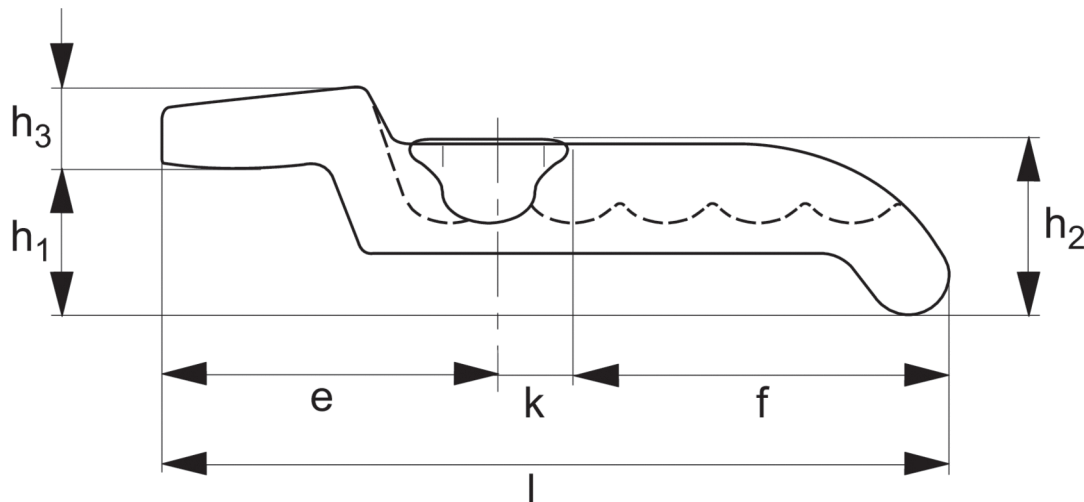
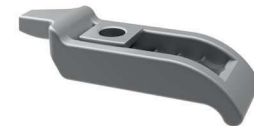


Stepless Adjustable Clamps

long slot version



1064



Material

Tempered and galvanized steel, blue passivated.


Technical Notes

Ideal for press tool clamping. Clamp body has a long slot for easy positioning.

Tips

Supplied without T-bolt or nut, for these parts see no. 2100, and no. 2440.

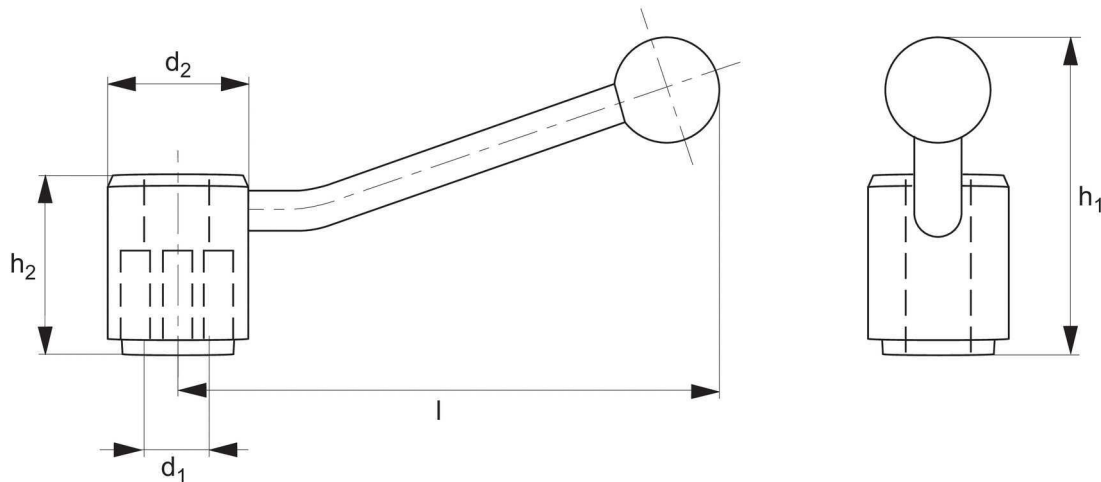
See table below for selection of correct T-bolt to achieve stated clamping height.

Order No.	b_1	T-slot	For thread	h_2	h_1 clamping height	$b_2 \times l$	b_3	e	f	k	h_3	 g
1064.W022	22	20 & 22	M20	60	25 - 50	66x200	20	88	112	20	18	1600
1064.W026	26	24 & 28	M24	70	30 - 70	76x232	23	97	135	24	22	2180
1064.W032	32	36	M30	80	40 - 75	90x263	25	107	156	28	25	3530

Ratchet Clamping Lever




1068



Material
steel, bleached

Technical Notes
For use as quick acting lever for most clamps, but particularly useful for no.'s 1040, 1050 and 1062.

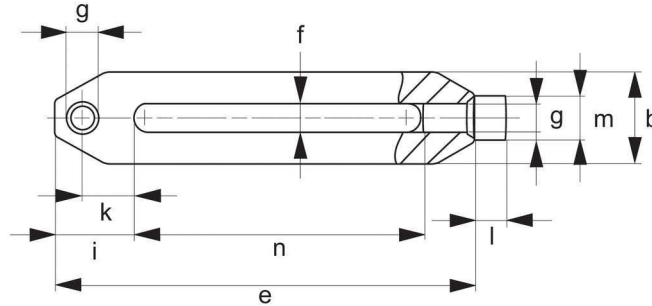
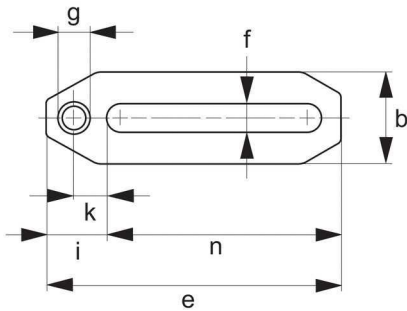
Tips
Allows quick-clamping without the need for spanners.

Order No.	d_1	d_2	h_1	h_2	l	 g
1068.W012	M12	33	83	48	135	360
1068.W016	M16	40	105	64	158	620

Long Slot Straight Clamps



1070



Material

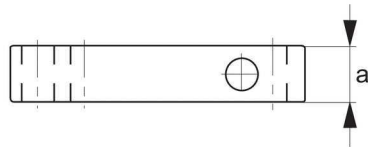
Hardened steel, blackened.

Technical Notes

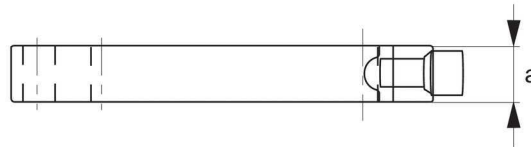
Long version has adjustable rear positioning screw and is particularly useful where long reach is required.

Tips


Self-aligning pads no. 3410, can be used with these clamps.



standard version



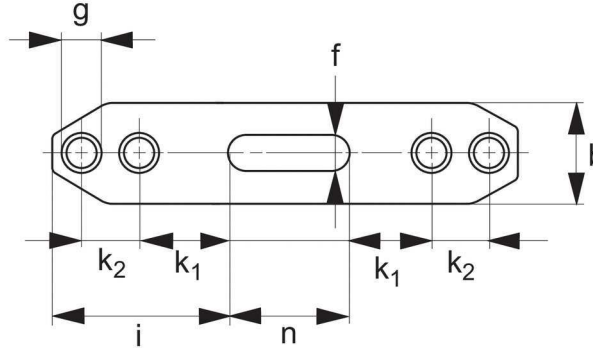
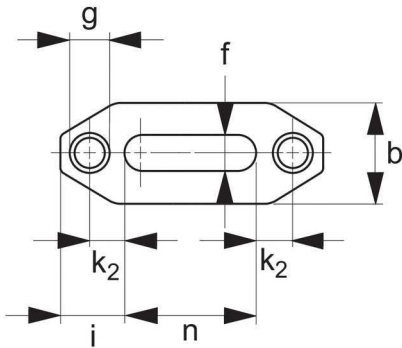
long version

Order No.	Type	Size	a x b	e	f	g	i	k	l	m	n	 g
1070.W012	Standard	12	20x35,0	110	12,5	M12	21,5	11,5	-	-	82	340
1070.W016	Standard	16	30x40,0	142	17,0	M16	28,0	15,0	-	-	107	770
1070.W020	Standard	20	40x50,0	200	21,0	M20	38,0	21,0	-	-	150	1800
1070.W112	Long	12	20x35,0	156	12,5	M12	30,0	20,0	12	18	106	600
1070.W116	Long	16	30x45,5	196	17,0	M16	35,0	22,0	16	24	136	1400
1070.W120	Long	20	40x60,0	298	21,0	M20	47,0	30,0	20	30	221	3900

Double Ended Straight Clamp



1074



Material

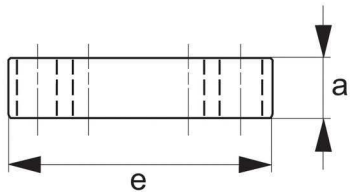
Hardened steel, blackened.

Technical Notes

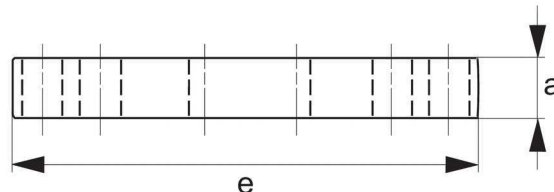
Ideal for clamping two similar parts at the same time.

Tips


Self aligning pads no. 3410, can be used with these clamps.



standard version



long version

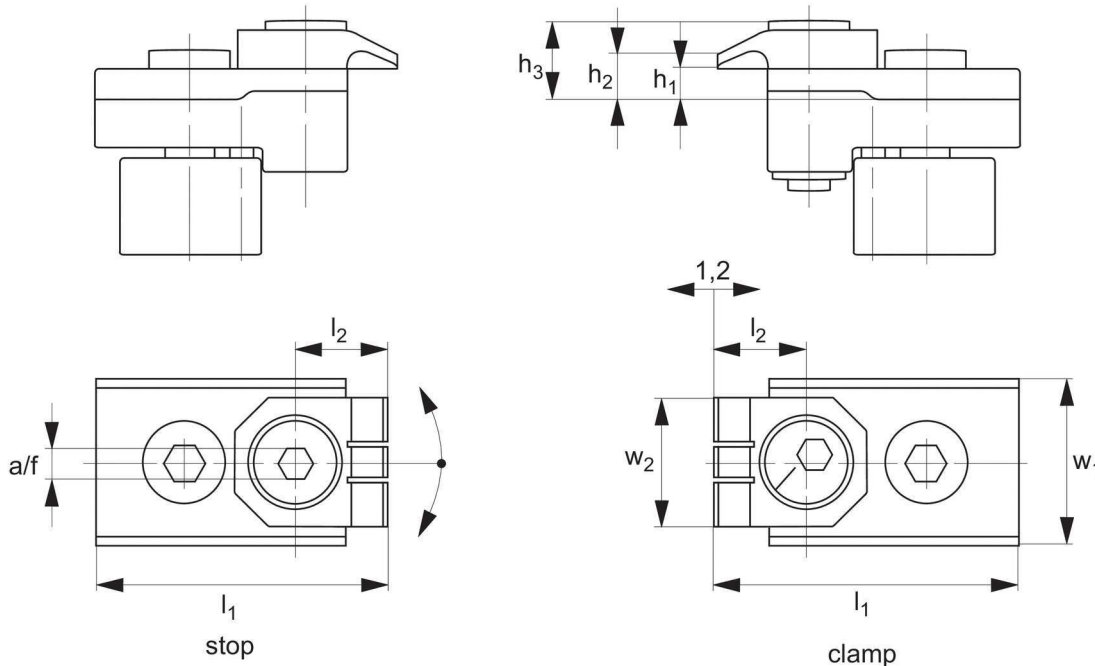
Order No.	Type	Size	a x b	e	f	g	i	k ₁	k ₂	n	 g
1074.W012	Standard	12	15x30	80	12,5	M12	23,5	13,5	-	33	200
1074.W016	Standard	16	25x40	100	17,0	M16	29,0	16,0	-	42	525
1074.W112	Long	12	20x30	160	12,5	M12	63,5	33,5	20	33	610
1074.W116	Long	16	30x40	200	17,0	M16	79,0	41,0	25	42	1480

T-slot Clamp, Set

low profile



1096



Material

Spring steel.

Technical Notes

The clamping point is 5mm above the machine table. Risers can be used to allow for through machining and drilling. Clamping torque 9Nm. Clamping range 1.2mm.

Supplied as a set: 1 piece clamping element, 1 piece stop.

Tips

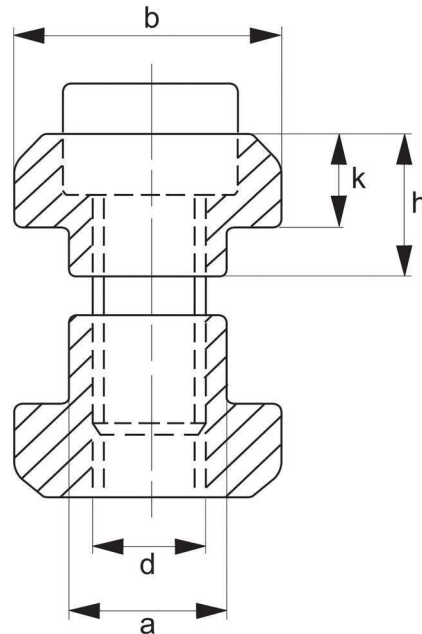
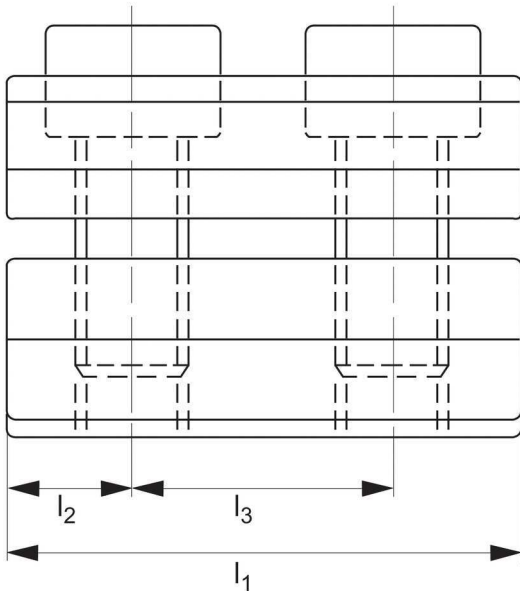
These low-profile clamps and stops have a holding force of 4000 N, their fingers push the workpiece down before clamping. The small height of the clamps eliminate any risk of collision between clamp and tooling, ideal for machining small and low profile components. Please refer to installation instructions below.

Order No.	Type	T-slot size	Clamp height	Clamp Stroke	l_1	w_1	l_2	w_2	h_1	h_2	h_3	a/f	Torque Nm	Clamping force kN	Weight g
1096.W260	Clamp plus stop	10	5	1,2	46	18	15	20	5	7,5	10,5	4	9,0	4	140
1096.W262	Clamp plus stop	12	5	1,2	48	18	15	20	5	7,5	10,5	4	9,0	4	150
1096.W264	Clamp plus stop	14	5	1,2	48	22	15	20	5	7,5	10,5	4	9,0	4	162
1096.W266	Clamp plus stop	16	5	1,2	48	25	15	20	5	7,5	10,5	4	9,0	4	178
1096.W268	Clamp plus stop	18	5	1,2	48	25	15	20	5	7,5	10,5	4	9,0	4	190

Slot Stops



1200



Material

Tempered and burnished steel.

Technical Notes

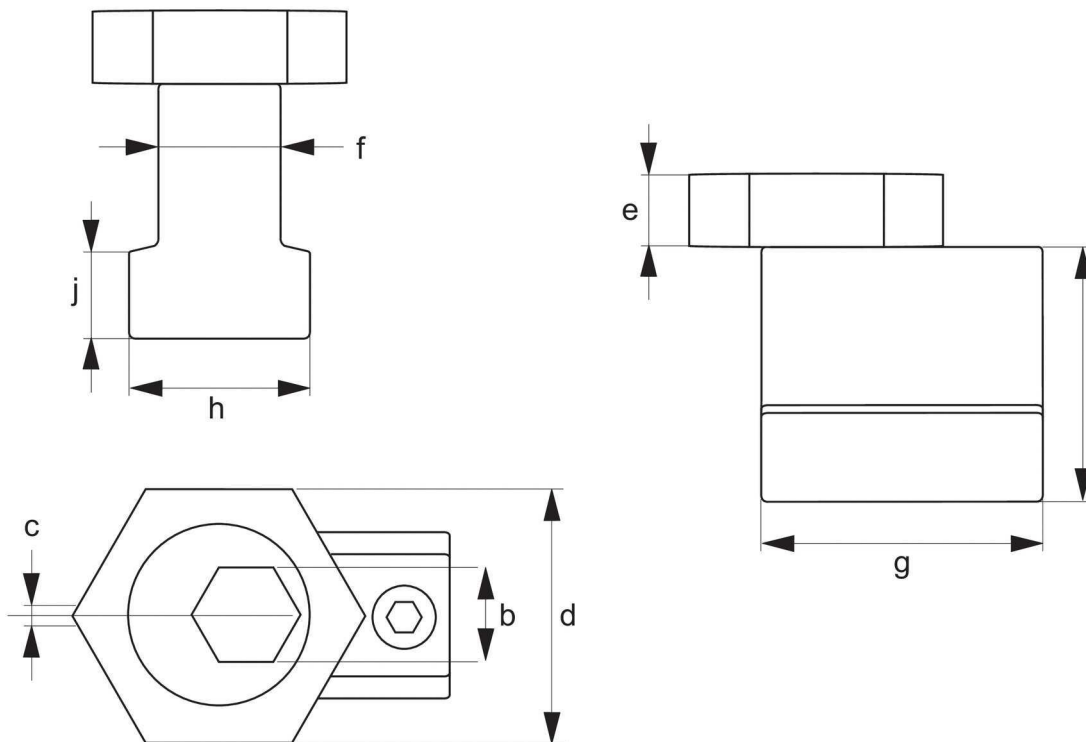
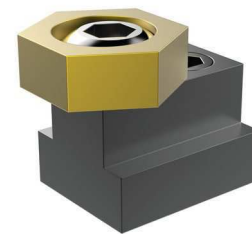
The stops can be used in longitudinal or transversal direction. Their low overall height allows use in applications with flat workpieces.

Order No.	Slot	a	b	d	h	k	l_1	l_2	l_3	$\frac{1}{g}$
1200.W012	12	11,7	18	M 8	12	7	36	9,0	18	100
1200.W014	14	13,7	22	M 8	12	8	44	11,0	22	140
1200.W016	16	15,7	25	M12	15	9	50	12,5	25	240
1200.W018	18	17,7	28	M12	16	10	56	14,0	28	340
1200.W020	20	19,7	32	M16	19	12	64	16,0	32	520
1200.W022	22	21,7	35	M16	21	14	70	17,5	35	720
1200.W024	24	23,7	40	M20	23	16	80	20,0	40	880
1200.W028	28	27,7	44	M20	24	18	88	22,0	44	1460

T-Slot Clamps



1215



Material

Body: heat treated steel.
 Clamp: brass.
 Packed in pairs.

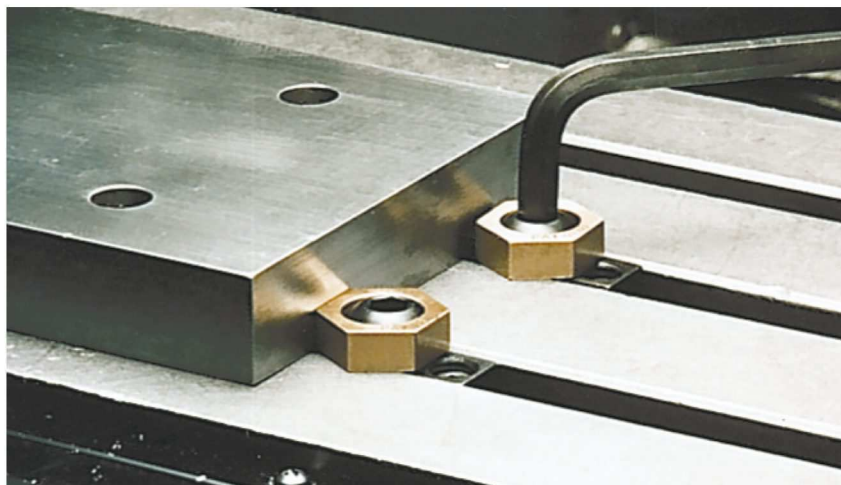
Technical Notes

For use in T-slots of machine tables.

Tips

For replacement clamping screws see 12112.
 Hex. key not included.

Order No.	Slot size	Cam screw	b	c	d	e	f	g	h	i	j	Clamp s /pack	Torque Nm.	Holdin g force kN.
1215.W008	8	M 6x1,00	5	1,01	15,86	4,75	8	23,2	12,7	9,5	4,6	2	8,5	3,5
1215.W010	10	M 6x1,00	5	1,01	15,86	4,75	10	23,2	14,2	14,2	4,3	2	8,5	3,5
1215.W012	12	M 8x1,25	5	1,01	20,62	4,75	12	27,9	15,9	15,9	6,4	2	11,3	3,3
1215.W014	14	M10x1,50	7	1,52	20,62	6,35	14	30,5	22,4	22,2	8,5	2	28,0	8,9
1215.W016	16	M12x1,75	8	2,03	25,40	9,53	16	30,9	25,4	22,2	9,2	2	61,0	13,3
1215.W018	18	M12x1,75	8	2,03	25,40	9,53	18	34,7	28,6	28,6	10,5	2	61,0	13,3
1215.W020	20	M16x2,00	12	2,54	30,15	12,70	20	39,2	31,8	31,8	12,6	2	135,0	26,7
1215.W022	22	M16x2,00	12	2,54	30,15	12,70	22	44,3	34,9	34,9	12,5	2	135,0	26,7

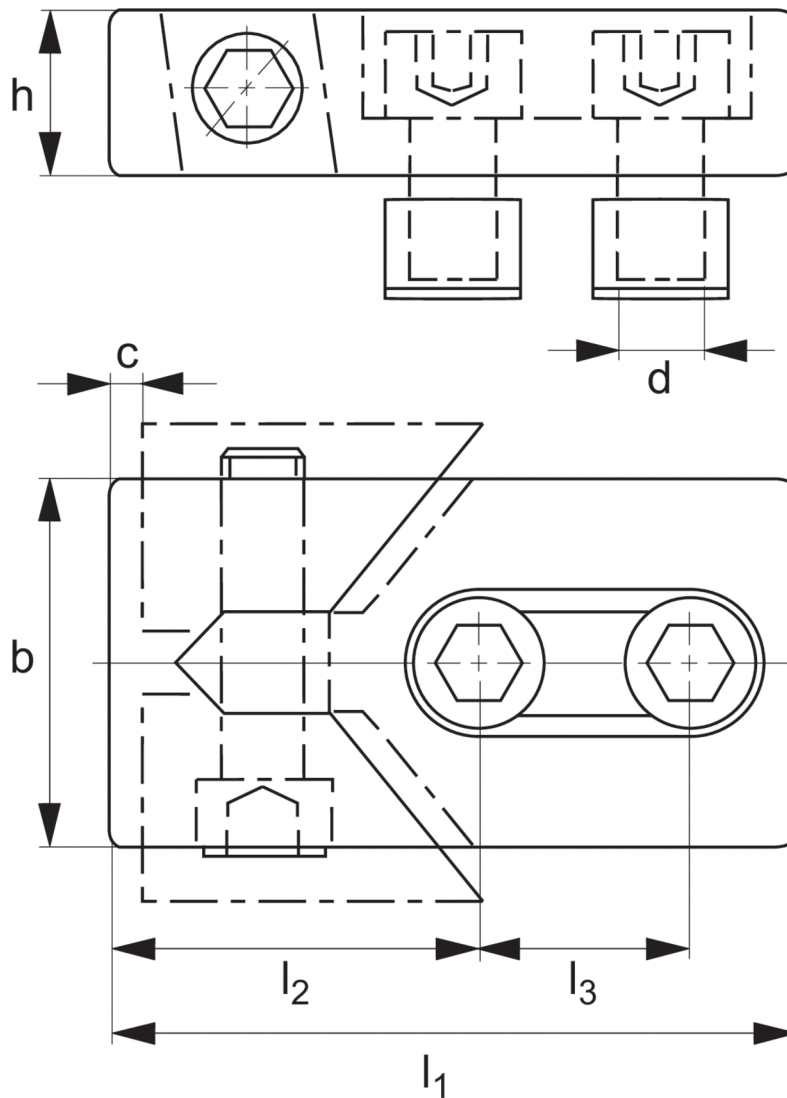


Clamping Jaws - Low Height

down hold action



1220

**Material**

Heat treated steel, blackened.

Technical Notes

Ideal for clamping low profile plates. Actuated on one side via suitable hexagon key (provided).

Tips

Clamping action is forwards and downwards into the workpiece.

Sold in pairs.

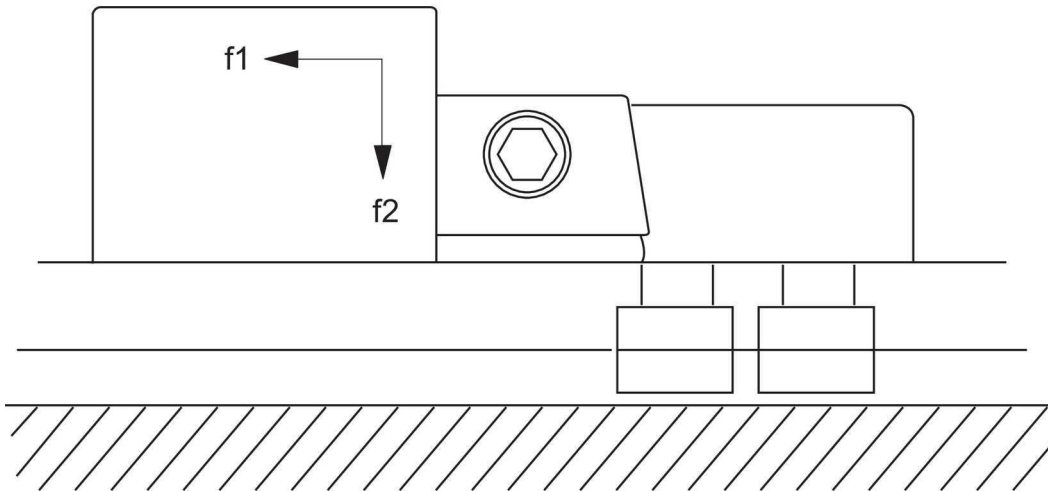
Order No.	T-slot	b	c stroke	d	h	l ₁	l ₂	l ₃	f ₁ kN.	f ₂ kN.	⚖️ g/pair
1220.W012	12	40	3	M10	20	80	39	26	16	0,6	1150
1220.W014	14	40	3	M12	20	80	39	26	22	0,9	1250
1220.W016	16	40	3	M12	20	80	39	26	22	0,9	1330
1220.W017	16	50	4	M14	25	100	46	34	32	1,2	2340
1220.W018	18	50	4	M16	25	100	46	34	36	1,4	2540
1220.W020	20	50	4	M16	25	100	46	34	36	1,4	2660
1220.W022	22	78	5	M20	30	140	65	50	36	1,4	5980
1220.W024	24	78	5	M20	30	140	65	50	36	1,4	6330
1220.W028	28	78	5	M24	30	140	65	50	40	1,6	7060
1220.W030	30	78	5	M24	30	140	65	50	40	1,6	7580

Clamping Jaws - Low Height

down hold action



1220



Material

Heat treated steel, blackened.

Technical Notes

Ideal for clamping low profile plates. Actuated on one side via suitable hexagon key (provided).

Tips

Clamping action is forwards and downwards into the workpiece.

Sold in pairs.

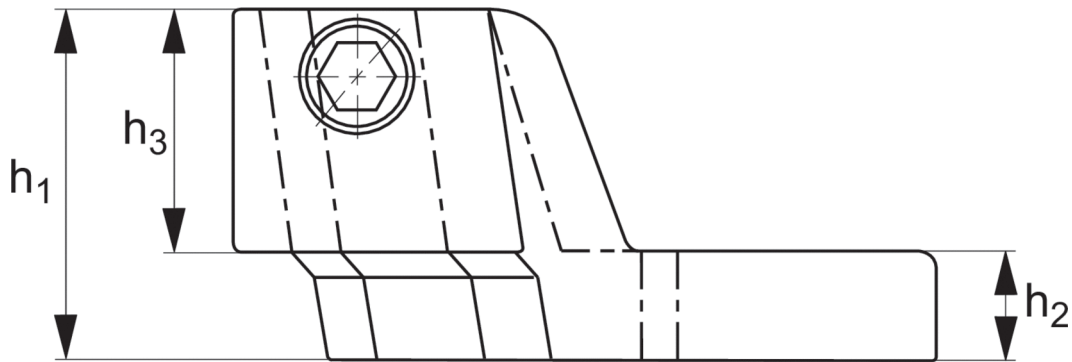


Clamping Jaws - Standard

down hold action



1230



Material

Body: cast iron.
Jaws: hardened carbon steel.

Technical Notes

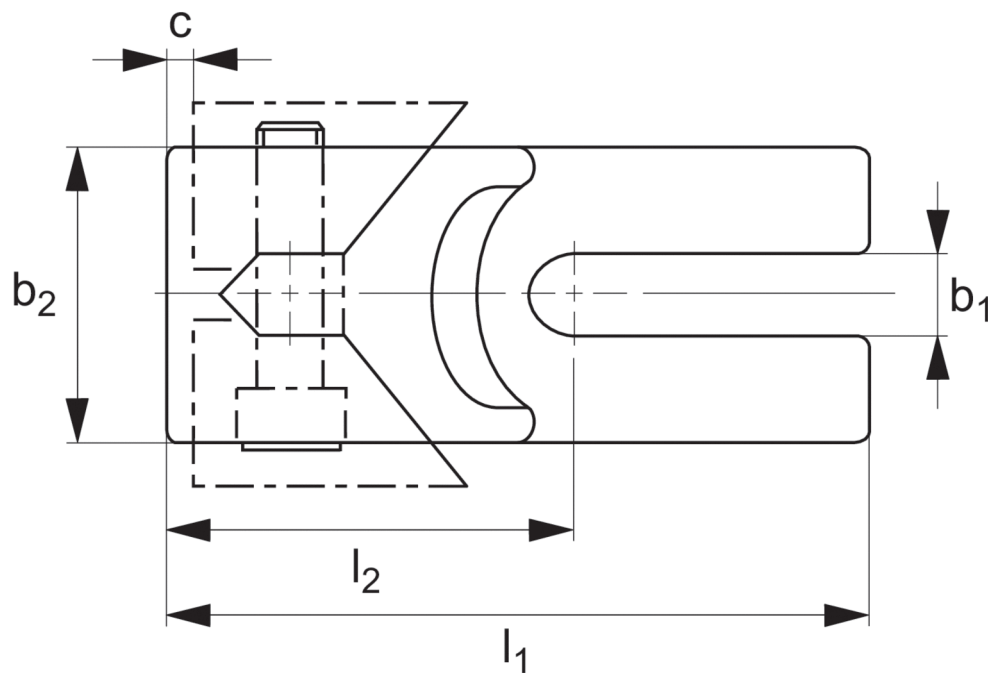
For mounting of each clamp to work table, two clamping bolts no. 2100, washers no. 2500 and fixture nuts no. 2430 should be ordered separately, see. Relevant hexagon key provided.

Tips

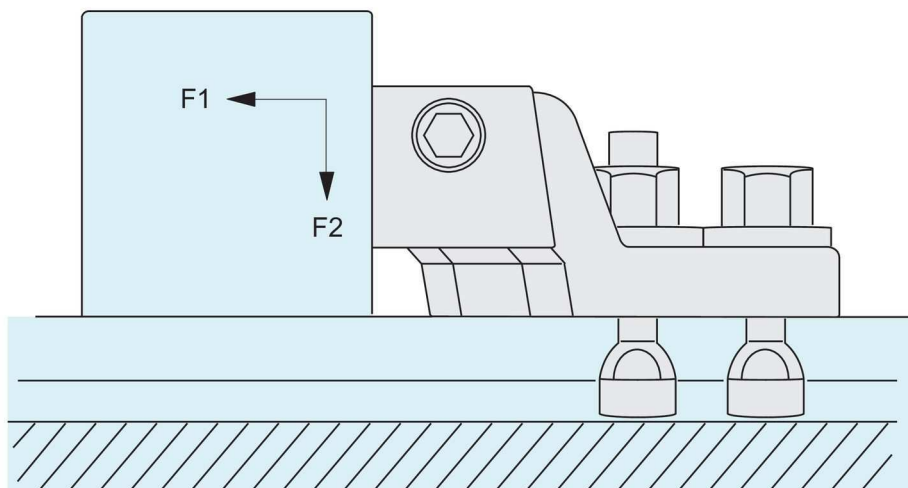
Can be actuated from left hand side only.

Sold in pairs.

For table of clamping forces, see below.



Order No.	T-slot	b ₁	b ₂	c stroke	h ₁	h ₂	h ₃	l ₁	g/pair
1230.W012	10,12 & 14	13	40	3	50	20	30	115	1590
1230.W018	16,18 & 20	19	50	4	60	25	35	150	2940
1230.W030	22-36	31	80	5	75	30	45	205	7900



Clamping Jaws - Standard

down hold action



1230



Material

Body: cast iron.

Jaws: hardened carbon steel.

Technical Notes

For mounting of each clamp to work table, two clamping bolts no. 2100, washers no. 2500 and fixture nuts no. 2430 should be ordered separately, see. Relevant hexagon key provided.

Tips

Can be actuated from left hand side only.

Sold in pairs.

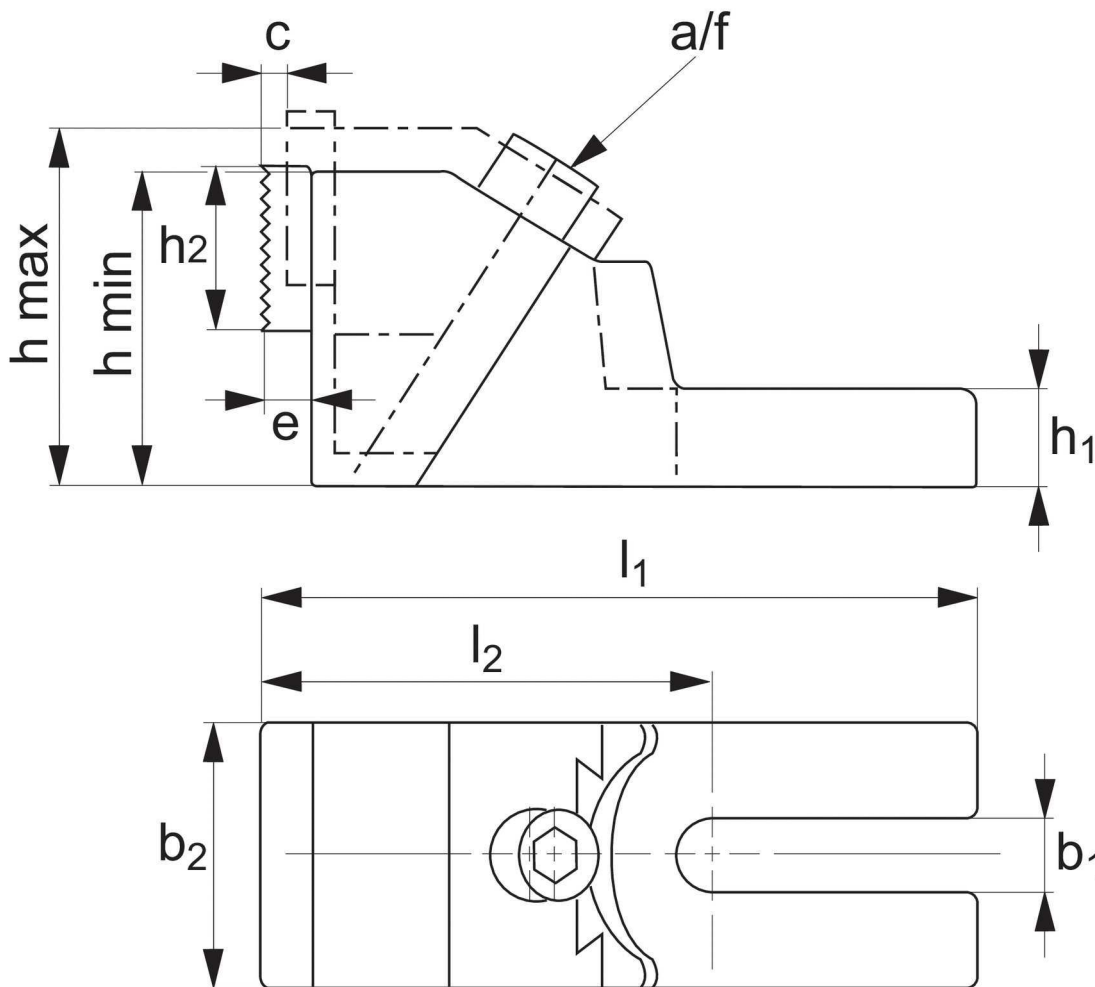
For table of clamping forces, see below.

Clamping Jaws - Extra Strong

down hold action



1232



Material

Body: malleable cast iron.
Jaws: hardened steel.

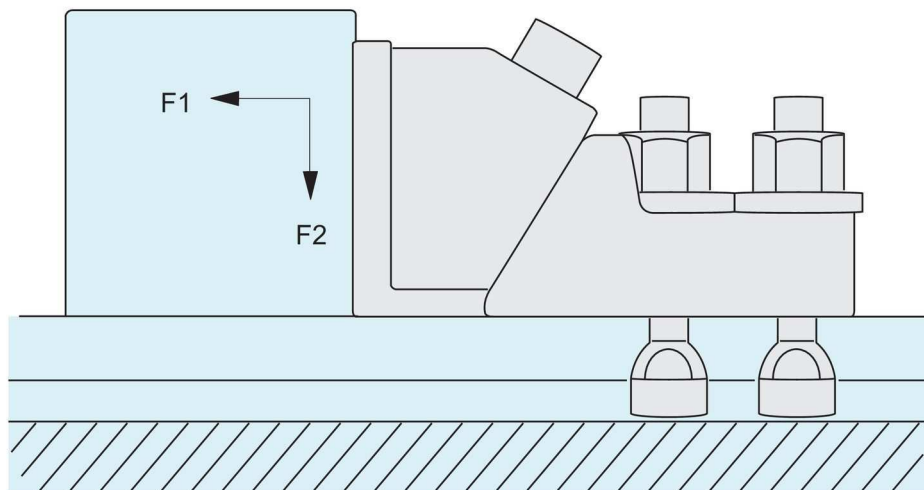
Technical Notes

Jaw plates reversible (ribbed/smooth). Clamping action is forwards and downwards into the workpiece. For table of clamping forces see below.

Tips

Extremely powerful clamps for use where high clamping forces are required. Due to the high clamping forces we recommend the use of 2 clamping bolts, no. 2100 for each clamp.

Order No.	T-slot	b_1	b_2	c stroke	e	h min.	h max.	h_1	h_2	l_1	l_2	a/f	g
1232.W014	12-18	19	65	8	12	85	99	38	40	179,0	112,5	14	4037
1232.W024	20-30	26	75	11	12	100	118	45	40	226,5	138,5	14	6688
1232.W036	32-42	38	90	15	12	120	145	56	40	265,0	158,0	17	11031

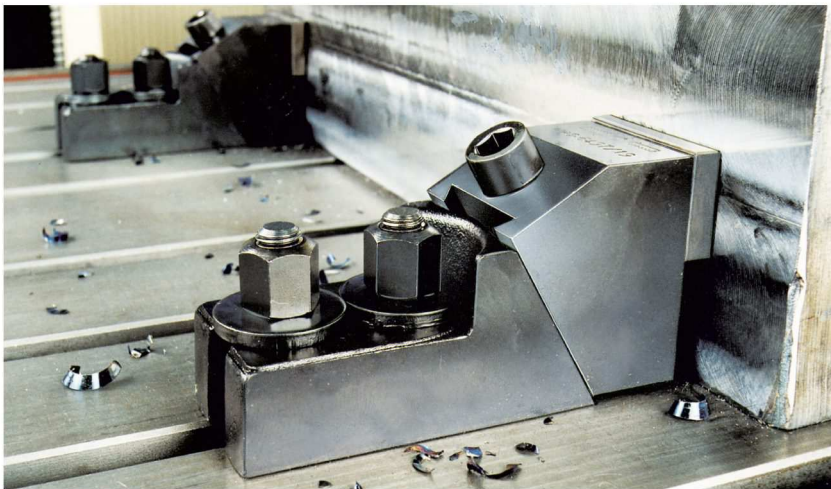


Clamping Jaws - Extra Strong

down hold action



1 2 3 2



Material

Body: malleable cast iron.
Jaws: hardened steel.

Technical Notes

Jaw plates reversible (ribbed/smooth). Clamping action is forwards and downwards into the workpiece.

For table of clamping forces see below.

Tips

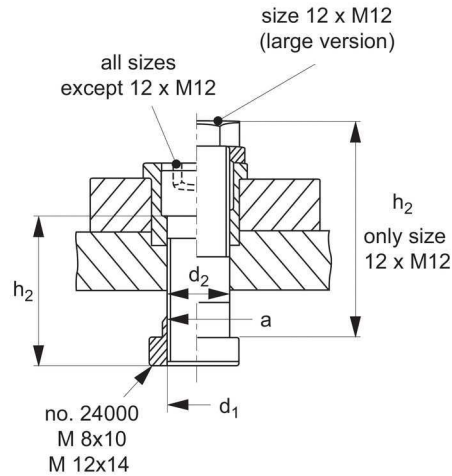
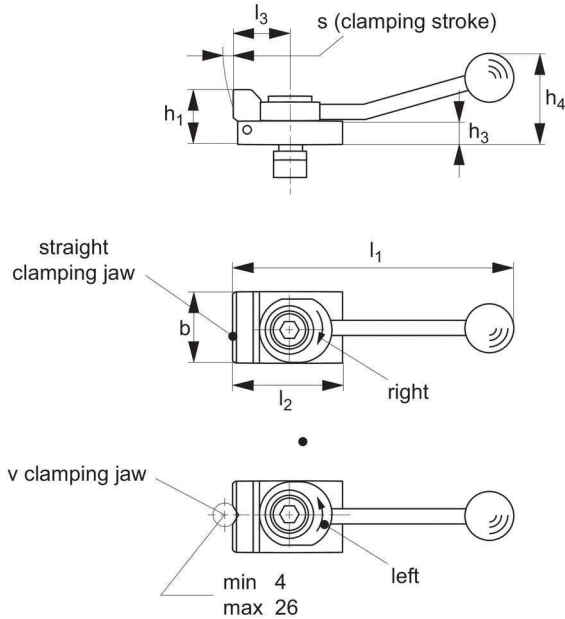
Extremely powerful clamps for use where high clamping forces are required. Due to the high clamping forces we recommend the use of 2 clamping bolts, no. 2100 for each clamp.

Down Hold Clamps

with cranked clamping lever



1240



Material

Case-hardened steel, blackened.

Technical Notes

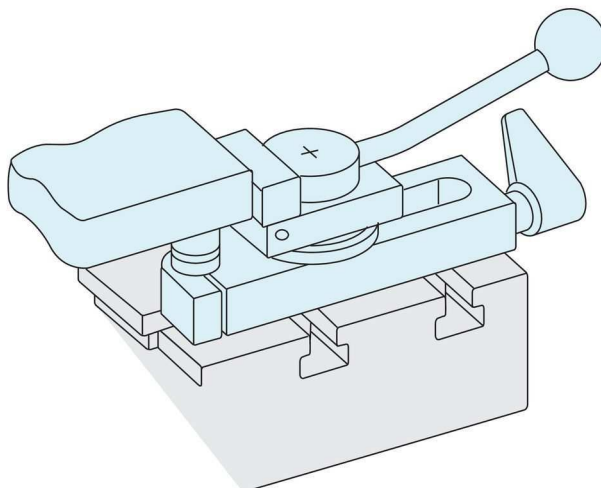
For quick clamping from the side. The clamps give forwards and downwards clamping forces.

Tips

Can bridge T-slots when used with holding plate no. 1241. The clamps low profile enables full-face machining. Often used in conjunction with cylindrical stops and bedding supports.

Supplied with standard T-nut. Clamps can be used in other T-slot sizes by selecting T-nuts no. 2400 as required, e.g. M 8x12, M 8x14, M12x16, M12x18.

Order No.	Type	a T-slot size	d ₁	d ₂	b	h ₁	h ₂	h ₃	h ₄	l ₁	l ₂	l ₃	stroke	Clamp. force horizontal kN. max.	g
1240.W101	Straight Jaw, Clamps Right	10	M 8	8,4	32	20	30	8	40	132	50	32	3	3,5	262
1240.W321	Straight Jaw, Clamps Right	12	M12	12,5	48	38	60	16	62	190	72	40	4	7,0	870
1240.W341	Straight Jaw, Clamps Right	14	M12	12,5	48	38	40	16	62	190	72	40	4	7,0	845
1240.W105	Straight Jaw, Clamps Left	10	M 8	8,4	32	20	30	8	40	132	50	32	3	3,5	262
1240.W325	Straight Jaw, Clamps Left	12	M12	12,5	48	38	60	16	62	190	72	40	4	7,0	868
1240.W345	Straight Jaw, Clamps Left	14	M12	12,5	48	38	40	16	62	190	72	40	4	7,0	847
1240.W102	V-Jaw, Clamps Right	10	M 8	8,4	32	20	30	8	40	132	50	32	3	3,5	263
1240.W322	V-Jaw, Clamps Right	12	M12	12,5	48	38	60	16	62	190	72	40	4	7,0	893
1240.W342	V-Jaw, Clamps Right	14	M12	12,5	48	38	40	16	62	190	72	40	4	7,0	838
1240.W106	V-Jaw, Clamps Left	10	M 8	8,4	32	20	30	8	40	132	50	32	3	3,5	264
1240.W326	V-Jaw, Clamps Left	12	M12	12,5	48	38	60	16	62	190	72	40	4	7,0	900
1240.W346	V-Jaw, Clamps Left	14	M12	12,5	48	38	40	16	62	190	72	40	4	7,0	841



Down Hold Clamps

with cranked clamping lever



1240



Material

Case-hardened steel, blackened.

Technical Notes

For quick clamping from the side.
The clamps give forwards and downwards clamping forces.

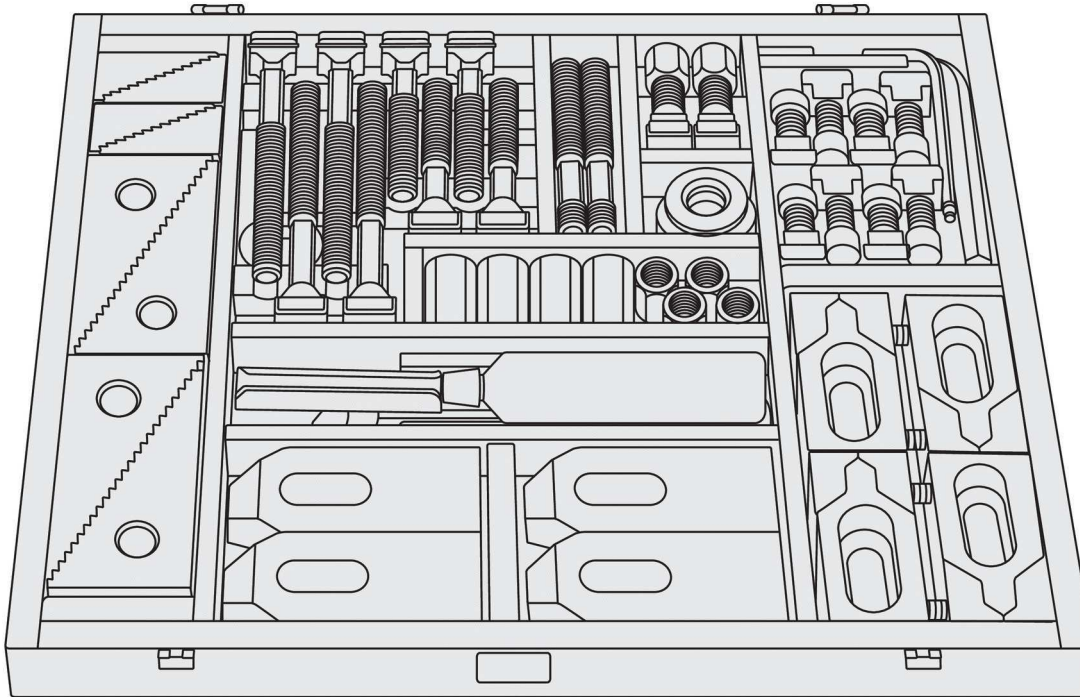
Tips

Can bridge T-slots when used with holding plate no. 1241. The clamps low profile enables full-face machining. Often used in conjunction with cylindrical stops and bedding supports.

Supplied with standard T-nut.
Clamps can be used in other T-slot sizes by selecting T-nuts no. 2400 as required, e.g. M 8x12, M 8x14, M12x16, M12x18.

Clamping Sets - with Low Height Clamps no.
CL2154

1910

**Technical Notes**

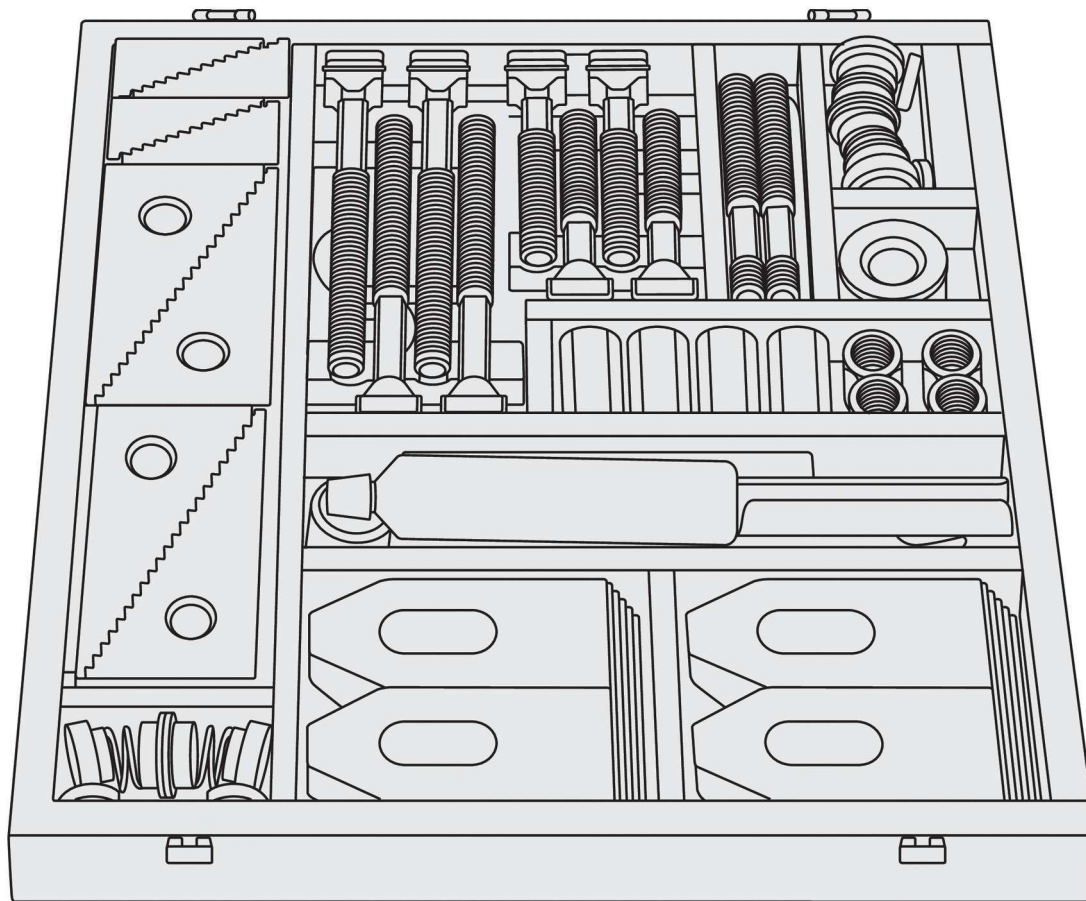
Clamp sets no. CL0570 are designed for use on T-slot machines, and contain all the necessary parts to quickly clamp tools, fixtures or workpieces. All parts are inter-changeable and are made of heat treated steel to DIN standard. The wooden box has a removable lid.

Order No.	$d_1 \times l_s$	a_1	b_1	b_2	c	d_2	e	g	h_1	
1910.W010	M10 x 39	10	30	13	30	30	44	M 5	8 - 30	197

Clamping Sets



1920



Technical Notes

Note as per Clamping Set CL0570, but without low height clamping jaws no. CL2154. The set contains the useful spring clamp supports no. FP0370.

Order No.	$d_1 \times l_s$	a_1	b_1	b_2	c	d_2	e	g	h_1	
1920.W010	M10 x 39	10	30	13	30	30	44	M 5	8 - 30	197

Quality Clamp Set

basic



1924



Material

All parts heat-treated. Tensile strength class 8,8 - 10,9.