

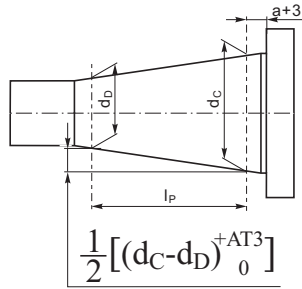
DIN 2080

Standardmerkmale der Werkzeuge:

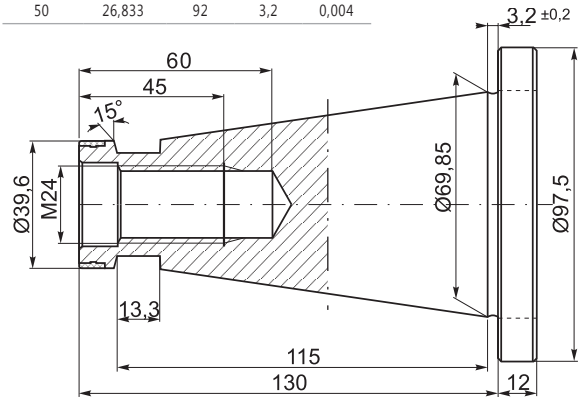
- Hergestellt aus Chrom Mangan Stahl
- Einsatzgehärtet auf eine Tiefe von 0,7mm
- Gehärtet und präzisionsgeschliffen
- Oberflächenhärte HRC 58±2
- Konuswinkel: Toleranz AT3

Standard features of the tools:

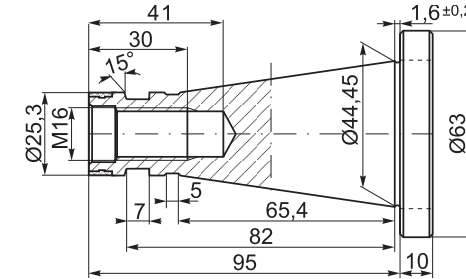
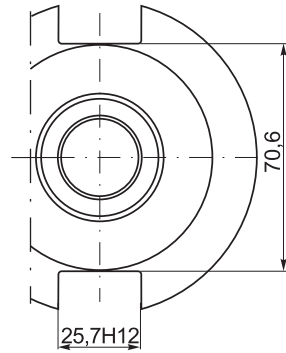
- Manufactured with Chrome Manganese steel
- Carburized with depth of case 0,7 mm
- Hardened and precision ground
- Surface hardness HRC 58±2
- Taper angle: tolerance AT3



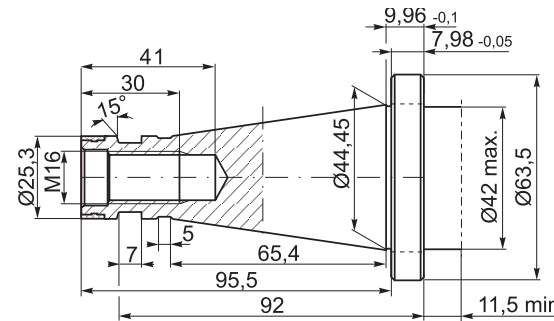
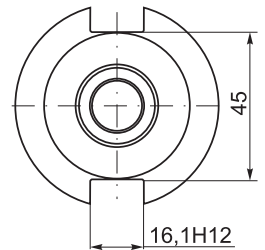
K 7:24	d _c -d _b	l _p	a	AT3
30	12,250	42	1,6	0,002
40	17,208	59	1,6	0,003
50	26,833	92	3,2	0,004



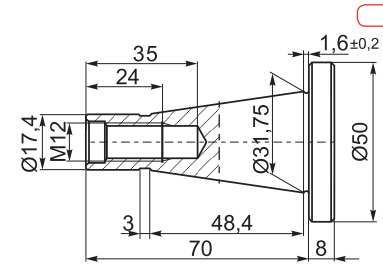
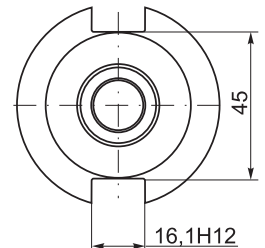
DIN 2080-50



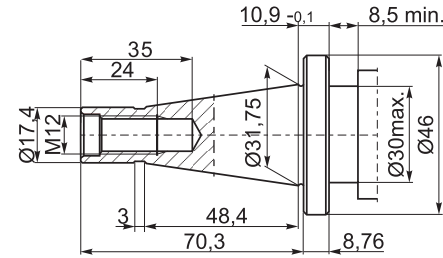
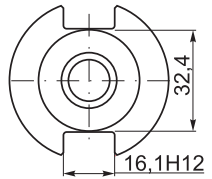
DIN 2080-40



DIN 2080-40 QC



DIN 2080-30



DIN 2080-30 QC

