

Type 3911



- The wrench operated scroll provides for uniform and distortion free clamping of workpieces while simultaneously allowing for a fast collet exchange
- Designed for use with 5C collets (385E) and can be used for turning, facing, boring, grinding and milling operations
- Collet not included

Standard accessories

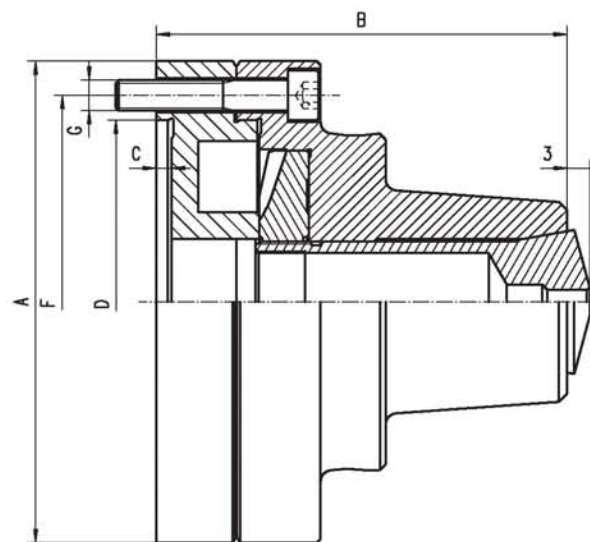


Spare parts see pages 80-93

Technical data see pages 94-98

Q - Number of mounting screws

Code No.	Type	A	B	C	D	F	Q	G	kg
353911030700	3911-125	126	107,5	4	95	108	3	M8	4,5

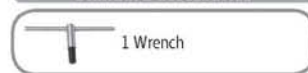


Type 3960



- The wrench operated scroll provides for uniform and distortion free clamping of workpieces while simultaneously allowing for a fast collet exchange
- Designed for use with 5C collets (385E) and can be used for turning, facing, boring, grinding and milling operations
- Type 3960 allows for fine adjustment to the required concentricity by means of 4 radially arranged adjusting screws
- Collet 5C not included

Standard accessories

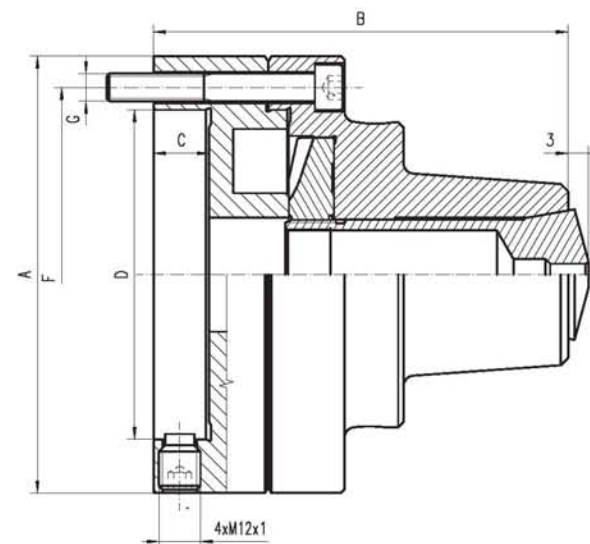


Spare parts see pages 80-93

Technical data see pages 94-98

Q - Number of mounting screws

Code No.	Type	A	B	C	D	F	Q	G	kg
353960030500	3960-125	126	117	15	55	108	3	M8	5,4



1
2
3
4
5
6

3911
3960