



Water-Proof Halogen Lighting Beams



VERTEX[®]



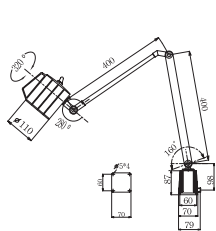
VHL-400L



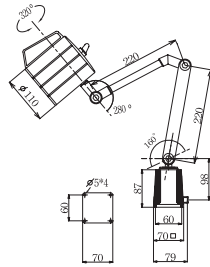
VHL-500S



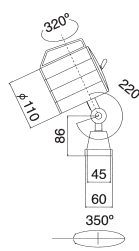
VHL-500L



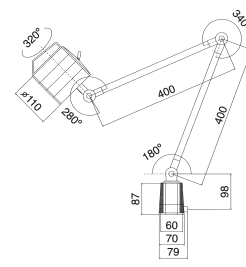
VHL-400L



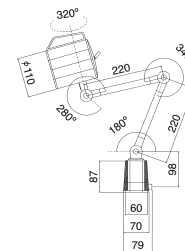
VHL-400M



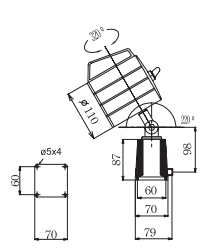
VHL-400S



VHL-500L



VHL-500M



VHL-500S

VHL-400L

- Water-proof lighting head with reinforced glass resists big temperature fluctuations of cutting oil.
- 12V/24V Voltage.
- Flexible Arm (round arm), 400x400mm
- With universal Lighting Base.
- Specifications of Bulb: 12V/50W.
- Different conditions demand different lighting bases. Selected rectangular L-type (#V-20) base or C-type (#V-21) base.

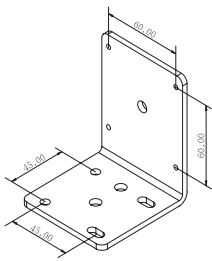
VHL-400M

- Performance & features: same as, but with shorter flexible arm at 220x185mm.

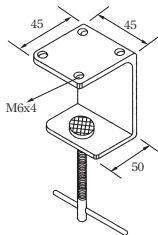
VHL-400S

- Specially designed to fit particular locations and spaces, The flexible arm is very short.

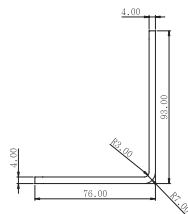
● OPTIONAL ●



V-20



V-21



V-26

VHL-500L

- Performance & features of these series: same as. The main difference is that VHL-500L can be installed with a shorter arm, and connected with AC current below 240V. Please indicate the required voltage when placing the orders to us.
- Specifications of the bulb: 12V/50W

VHL-500M

- Same specifications as VHL-500L, but with shorter flexible arm at 220x220mm.

VHL-500S

- Specially designed to fit particular locations and spaces. The flexible arm is very short.

WATER-PROOF HALOGEN LIGHTING LAMP (VHL-400L SERIES)

LIGHTING HEADS OF THESE SERIES WITH SPECIFIC FEATURES OF WATER-PROOF, DUST-FREE, ANTI-LUBRICAT, ANIT-CUTTING OIL, ETC. THE LIGHTING UNITS ADPOTED WITH A BULB (12V/50W). CUSTOMERS' SPECIFICATIONS ALSO ACCEPTED.

ORDER NO.	CODE NO.
V-20	1025-106
V-21	1025-107
V-26	1025-108

ORDER NO.	VOLTS	BULB	ARM LENGTH L x l	OPTIONAL ACCESSORIES	WEIGHT (N.W.)	CODE NO.
VHL-400L	110V - 220V	12V 50W	400x400	V-20 / V-21	3.8	1025-100
VHL-400M	110V - 220V	12V 50W	220x220	V-20 / V-21	3.5	1025-101
VHL-400S	110V - 220V	12V 50W		V-20 / V-21	2.8	1025-102
VHL-500L	110V - 220V	12V 50W - 24V 50W	400x400	V-20 / V-21	4	1025-103
VHL-500M	110V - 220V	12V 50W - 24V 50W	200x220	V-20 / V-21	3.8	1025-104
VHL-500S	110V - 220V	12V 50W - 24V 50W		V-20 / V-21	2.7	1025-105