



Coupling Nut

HRC 34°



VERTEX®



Metric Size

mm

| ORDER NO. | Thread | Parallel | Length | Weight (kg) | CODE NO. |
|-----------|----------|----------|--------|-------------|----------|
| 2612M | M8x1.25 | 13 | 22 | 0.033 | 1003-060 |
| 2613M | M10x1.5 | 17 | 25 | 0.035 | 1003-061 |
| 2614M | M12x1.75 | 21 | 32 | 0.065 | 1003-062 |
| 2614M-1 | M14x2.0 | 21 | 32 | 0.06 | 1003-063 |
| 2615M | M16x2.0 | 26 | 41 | 0.128 | 1003-064 |
| 2616M | M18x2.0 | 32 | 48 | 0.228 | 1003-065 |
| 2617M | M20x2.5 | 32 | 48 | 0.208 | 1003-066 |
| 2618M | M24x3.0 | 41 | 64 | | 1003-067 |

Inch Size

| ORDER NO. | Thread | Parallel | Length | Weight | CODE NO. |
|-----------|------------------|----------|--------|--------|-----------|
| 2612I | 5/16-18 | 9/16 | 7/8 | 0.033 | 1003-060I |
| 2613I | 3/8-16 | 11/16 | 1 | 0.035 | 1003-061I |
| 2614I | 1/2-12 1/2-13 | 7/8 | 1-1/4 | | 1003-062I |
| 2615I | 5/8-11 | 1-1/16 | 1-5/8 | 0.128 | 1003-064I |
| 2616I | 3/4-10 | 1-1/4 | 1-7/8 | 0.22 | 1003-065I |
| 2617I | 7/8-9 | 1-7/6 | 1-7/8 | | 1003-066I |
| 2618I | 1-8 | 1-5/8 | 2-1/2 | | 1003-067I |



Flange Nut

HRC 34°

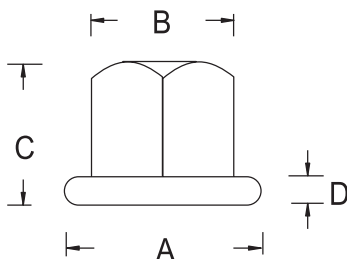


Metric Size

mm

| ORDER NO. | Thread | A | B (M/M) | C | D | Weight (kg) | CODE NO. |
|-----------|----------|----|---------|----|---|-------------|----------|
| 4512 | M8x1.25 | 19 | 13 | 10 | 2 | 0.013 | 1003-050 |
| 4513 | M10x1.5 | 22 | 17 | 12 | 3 | 0.023 | 1003-051 |
| 4514 | M12x1.75 | 28 | 19 | 16 | 4 | 0.043 | 1003-052 |
| 4514M | M14x2.0 | 28 | 21 | 16 | 4 | 0.047 | 1003-053 |
| 4515 | M16x2.0 | 35 | 26 | 17 | 5 | 0.087 | 1003-054 |
| 4516 | M18x2.5 | 41 | 32 | 25 | 6 | 0.10 | 1003-055 |
| 4517 | M20x2.5 | 44 | 32 | 35 | 6 | 0.092 | 1003-056 |
| 4518 | M24x3.0 | 50 | 41 | 32 | 6 | 0.12 | 1003-057 |

Inch Size



| ORDER NO. | Thread | A | B (M/M) | C | D | Weight (kg) | CODE NO. |
|-----------|----------------------|-------|---------|-------|------|-------------|-----------|
| 4512I | 5/16-18 | 3/4 | 9/16 | 3/8 | 3/32 | 0.013 | 1003-050I |
| 4513I | 3/8-16 | 7/8 | 11/16 | 1/2 | 1/8 | 0.023 | 1003-051I |
| 4514I | 1/2-12NC 1/2-13NC | 1-1/8 | 7/8 | 5/8 | 5/32 | 0.043 | 1003-052I |
| 4515I | 5/8-11 | 1-3/8 | 1-1/16 | 11/16 | 3/16 | 0.087 | 1003-054I |
| 4516I | 3/4-10 | 1-5/8 | 1-1/4 | 1 | 1/4 | 0.092 | 1003-055I |
| 4517I | 7/8-9 | 1-3/4 | 1-7/16 | 1-1/8 | 1/4 | 0.12 | 1003-056I |
| 4518I | 1-8 | 2 | 1-5/8 | 1-1/4 | 1/4 | 0.12 | 1003-057I |