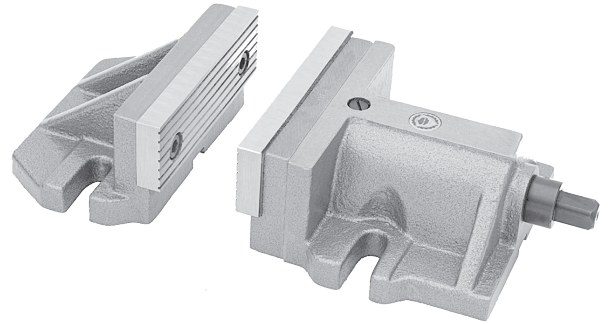
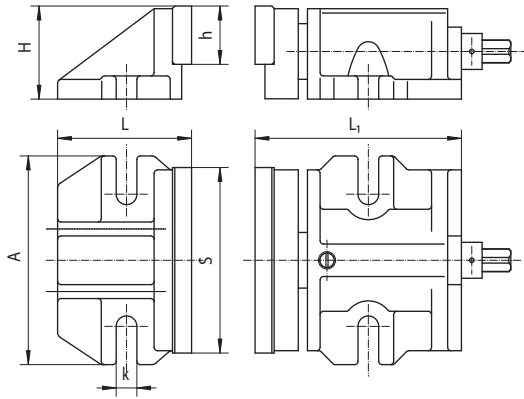


Type 6522 - TWO-PIECE MACHINE VISE



Features:

- Facilitates utilization of the full length of the machine bed
- Thrust bearing in the power transmission makes operation easy
- Removable, grooved jaw inserts are hardened and ground, ensuring longer life with maintained accuracy and repeatability
- Workpiece is located directly on the bed for rigidity
- Clamp base body and rigid base are high quality castings

Application:

- Designed for use with milling machines, drill presses, etc. where a large clamping force is required

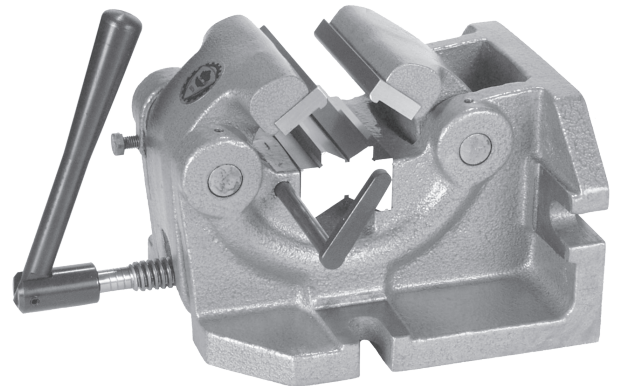
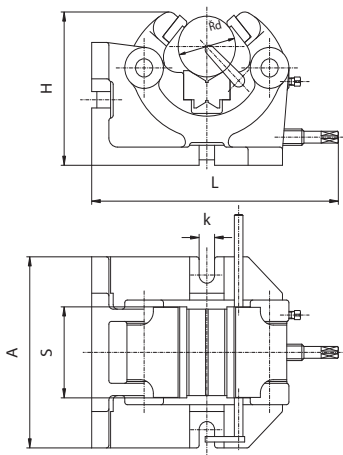
Standard accessories:

- Handcrank
- Slot nuts

Size S	A	H	L	L1	h	k	Weight [kg]
160	180	80	160	194	50	17	14,5
200	196	100	172	258	63	17	26,2

Example of order: 6522-160

Type 6546 - SHAFT HOLDING MACHINE VISE



Features:

- The adjustable sliding rods enable the workpieces to remain set in the same position
- Able to be set up in both horizontal and vertical positions
- Hardened and ground jaw inserts and V-block
- Sturdy, cast iron design

Application:

- Ideal for most drilling and light milling operations

Standard accessories:

- Handcrank
- Slot nuts

Size S	A	H	L	d	k	Max. clamping force [daN]	Weight [kg]
100	180	170	305	10-63	18	1000	21,3
125	200	235	405	15-100	18	1500	38,0
160	245	295	460	50-160	18	2000	75,0

Example of order: 6546-100