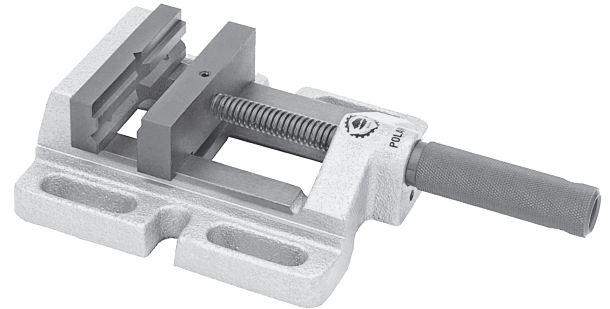
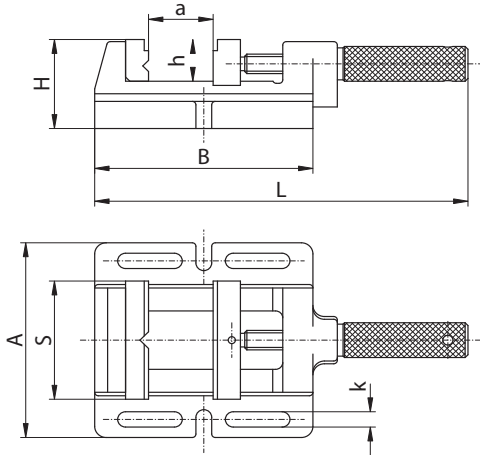


Type 6543 - DRILLING MACHINE VISE



Features:

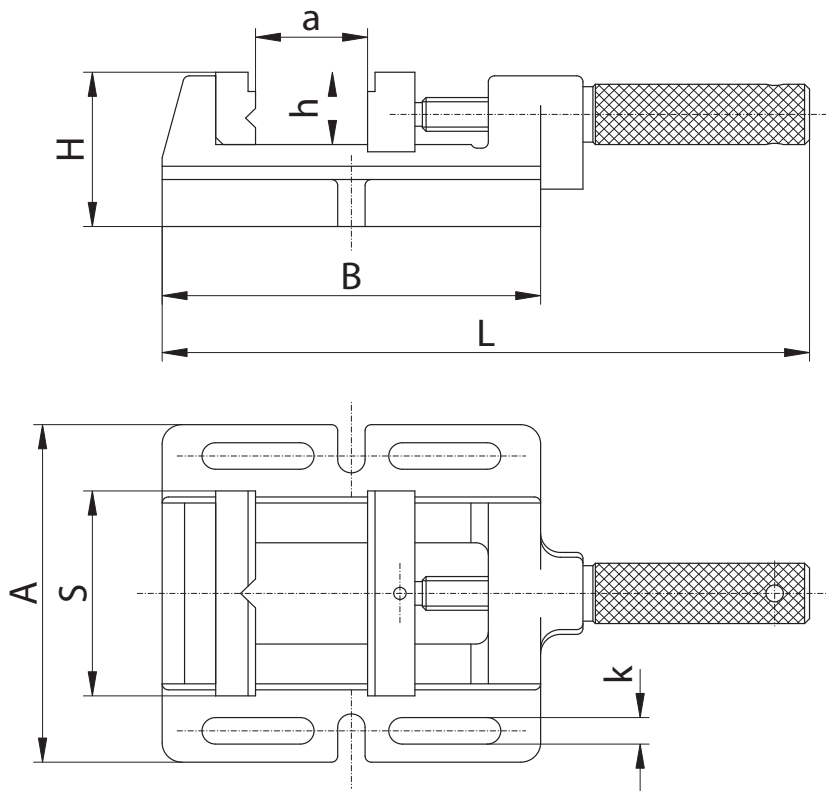
- Vertical and horizontal V-grooves on the fixed jaw insert and recesses of both jaws enable a wide variety of workpieces to be clamped
- Clamping slots and elongated holes enable universal attachment

- Both jaws have a contact surface for clamping flat workpieces
- Body is made of high quality castings

Application:

- Ideal for most drilling and light milling operations

| Size S | A | B | H | L | a max. | h | k | Max. clamping force [daN] | Weight [kg] |
|--------|-----|-----|----|-----|--------|----|------|---------------------------|-------------|
| 85M | 140 | 152 | 64 | 265 | 70 | 30 | 11,0 | 400 | 3,4 |
| 100M | 152 | 170 | 64 | 285 | 85 | 30 | 13,5 | 500 | 4,0 |
| 120M | 176 | 212 | 64 | 360 | 120 | 30 | 13,5 | 650 | 6,0 |
| 150M | 208 | 262 | 66 | 442 | 150 | 38 | 13,5 | 800 | 8,4 |



| Size S | A | B | H | L | a max. | h | k | Max. clamping force [daN] | Weight [kg] |
|--------|-----|-----|----|-----|--------|----|------|---------------------------|-------------|
| 85M | 140 | 152 | 64 | 265 | 70 | 30 | 11,0 | 400 | 3,4 |
| 100M | 152 | 170 | 64 | 285 | 85 | 30 | 13,5 | 500 | 4,0 |
| 120M | 176 | 212 | 64 | 360 | 120 | 30 | 13,5 | 650 | 6,0 |
| 150M | 208 | 262 | 66 | 442 | 150 | 38 | 13,5 | 800 | 8,4 |