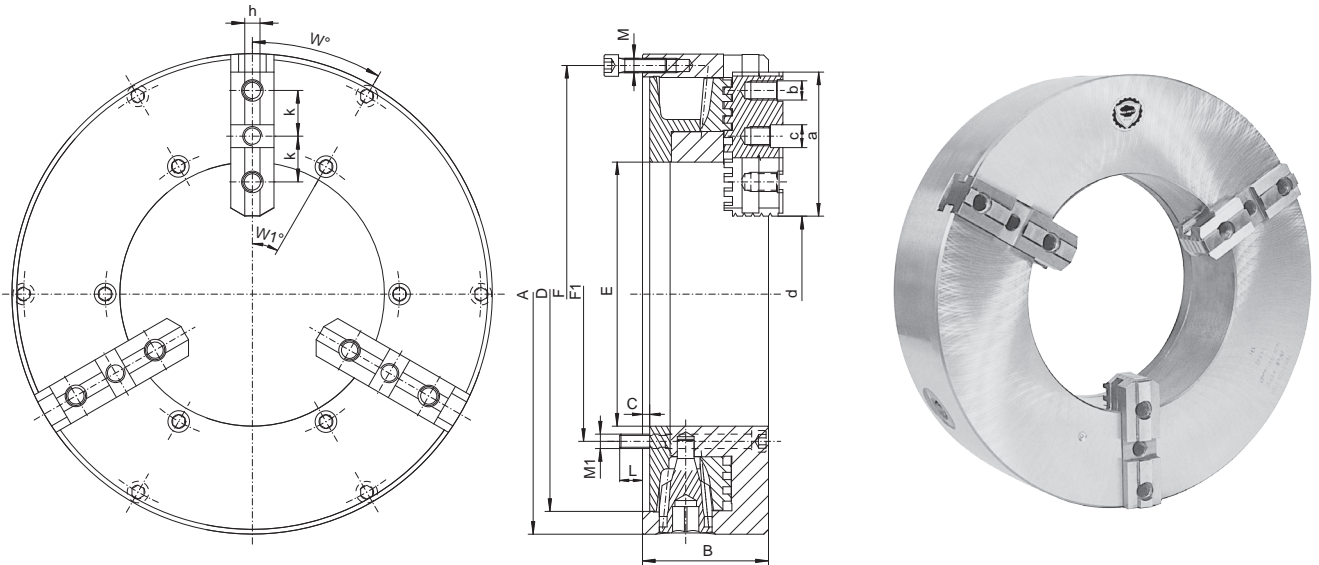


Type 3295

3 JAWS, CAST IRON BODY



Features:

- Cast iron body
- Chucks may work individually or in pairs, mounted on opposite sides of the lathe spindle, ensuring the same vertical position of the jaws in both chucks
- Large through-hole compared to the outside diameter of the chuck body

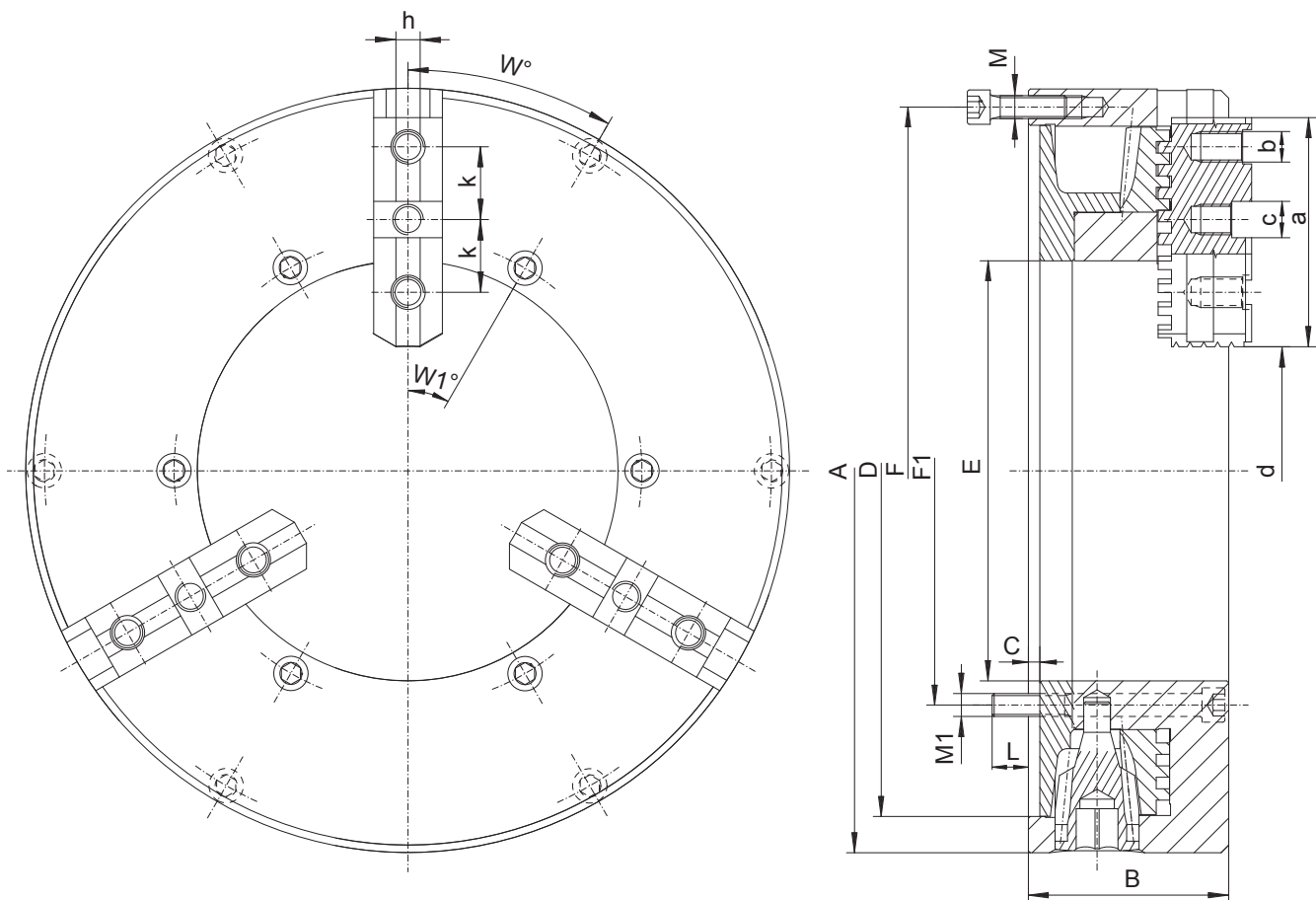
- Able to machine very long workpieces

Application:

- Designed for gripping long pipes during machining for conventional and specialized machine-tools

Chuck size		400	500	660	800	
A		400	508	660	800	
B		105	120	135	151	
C		6	8	14	7	
D		362	462	580	710	
E		220	320	406	410	
F		381	481,5	620	-	
F1		-	-	-	460	
M		6xM12	6xM16	6xM16	-	
M1		-	-	-	6xM24	
W		30°	30°	30°	-	
W1		-	-	-	30°	
L		-	-	-	25	
a		120	120	127	225	
b		M16	M20	M20	M20	
c		19,04	19,04	19,04	19,04	
h		12,7	12,7	12,7	12,7	
d	min.	168	250	376	260	
	max.	288	380	497	566	
Max. speed		rpm	500	350	250	200
Approx. weight [kg]		kg	57,7	75,8	128,9	212,0

Type 3295	Standard accessories		1 set of soft top jaws		1 set of hard master jaws		1 wrench	Optional accessories		1 set of hard top jaws



Chuck size		400	500	660	800	
A		400	508	660	800	
B		105	120	135	151	
C		6	8	14	7	
D		362	462	580	710	
E		220	320	406	410	
F		381	481,5	620	-	
F1		-	-	-	460	
M		6xM12	6xM16	6xM16	-	
M1		-	-	-	6xM24	
W		30°	30°	30°	-	
W1		-	-	-	30°	
L		-	-	-	25	
a		120	120	127	225	
b		M16	M20	M20	M20	
c		19,04	19,04	19,04	19,04	
h		12,7	12,7	12,7	12,7	
d	min.	168	250	376	260	
	max.	288	380	497	566	
Max. speed		rpm	500	350	250	200
Approx. weight [kg]		kg	57,7	75,8	128,9	212,0